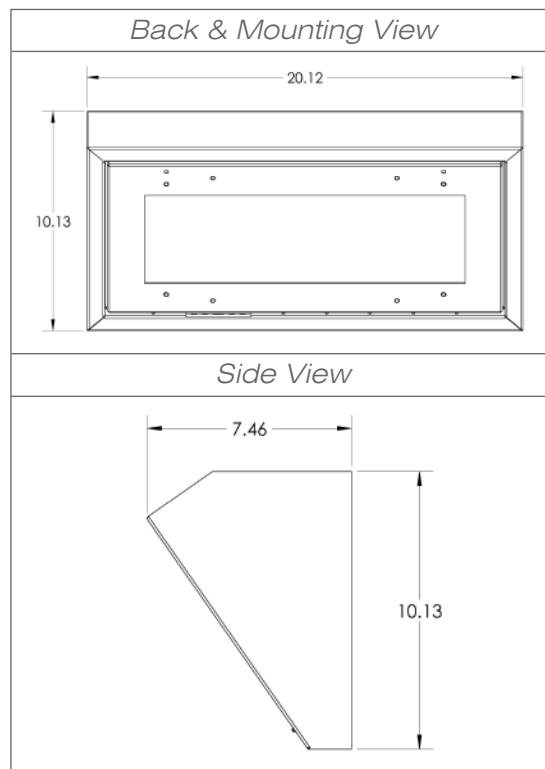


The AEI XWP WallPack is perfect for all exterior lighting applications, including damp and wet locations. The XWP's array of LEDs provide brilliant, uniform lighting for all types of commercial and industrial indoor and outdoor applications. The XWP's unparalleled energy savings, makes it the best option for damp, wet and extreme environment lighting needs.

XWP WALLPACK for DAMP & WET LOCATIONS



FEATURES

- Made in the U.S.A.
- Aluminum body & thermal transfer materials ensure premium lumen maintenance
- High lumen LED output with multiple lumen output options
- Available in multiple colors
- Rated for a wide range of operating temperatures from:
-40° C to 47° C, -40° F to 117° F
- 5-Year Limited Warranty on all fixture components

ELECTRICAL

- Rated input voltage 120-277 VAC with 347-480 VAC options available. Consult AEI for details.
- 0-10V dimming option
- Occupancy sensor, integration, photocell & other control system options available. Consult AEI for details.

OPTICAL

- 3500K, 4000K & 5000K CCT packages are offered, each w/ 80+ CRI
- Available in:
 - 1500-2000 lumens for the XWP 20
 - 2300-2500 lumens for the XWP 25
 - 3000-3500 lumens for the XWP 35
 - 4000-4500 lumens for the XWP 45
 - 5800-6000 lumens for the XWP 60
- L70 lumen maintenance >90,000 hours when operating within specified temperatures
- Cutoff shield available for Dark Sky compliance

APPLICATIONS

- Parking garages & areas
- Exterior perimeter lighting
- Commercial entrances and walkways
- Loading bay exteriors
- Basement and subterra environments

HOUSING

- All-aluminum housing Made In The U.S.A. and suitable for wet locations
- Compact, solid housing design
- Simple mounting to ensure easy install for most applications

FINISH

- Durable powder-coat finish provides protection from extreme environments
- Available in a wide variety of colors and finishes. Contact AEI for all options.

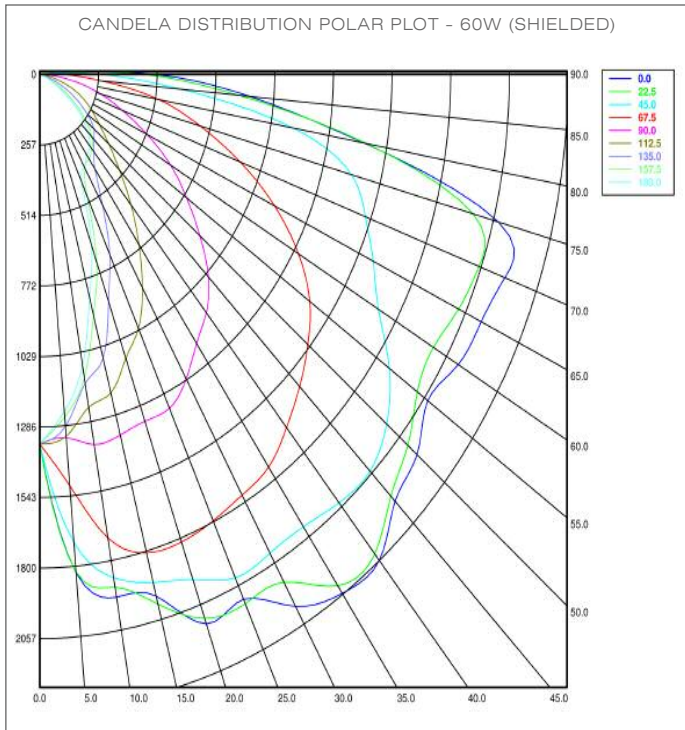
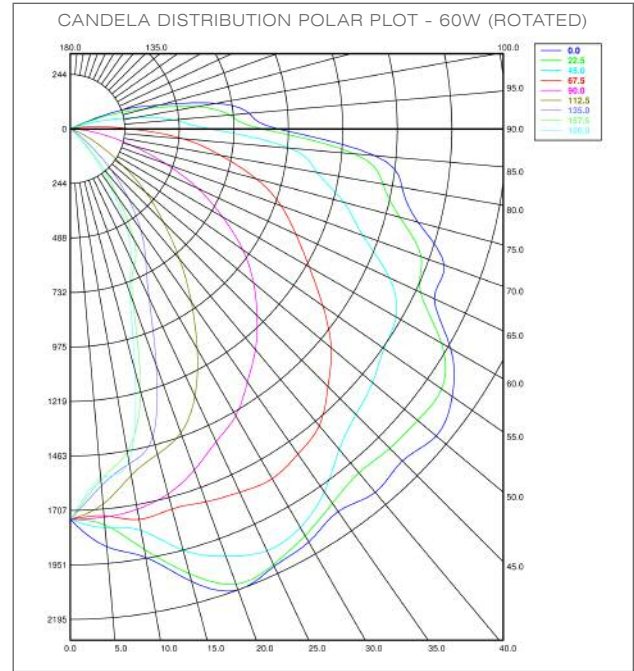
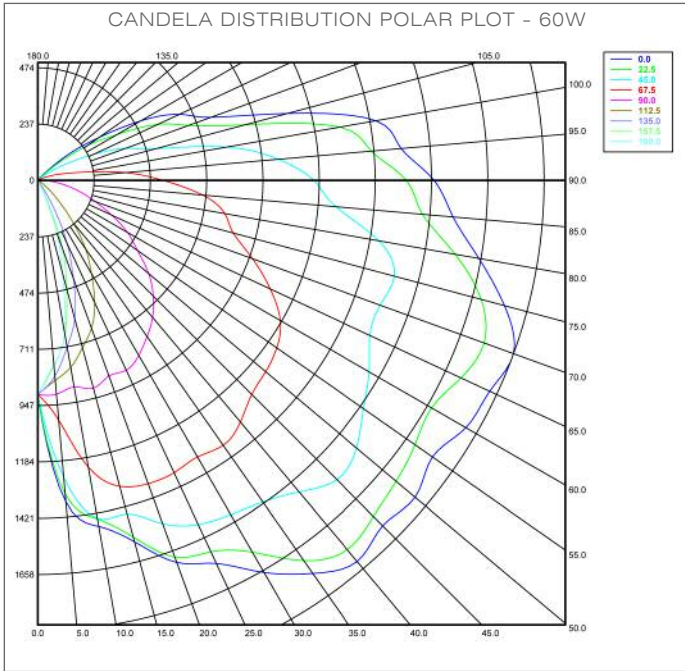


AEI LIGHTING

XWP WALLPACK

for DAMP & WET LOCATIONS

PHOTOMETRY



Zonal Lumen Summary				
Zone	Lumens	%Lamp	%Fixt	
0- 30	816	NA	14.0	
0- 40	1378	NA	23.6	
0- 60	2764	NA	47.4	
0- 90	4855	NA	83.2	
90-120	918	NA	15.7	
90-150	981	NA	16.8	
90-180	981	NA	16.8	
0-180	5836	NA	100.0	

Zonal Lumen Summary (ROTATED)				
Zone	Lumens	%Lamp	%Fixt	
0- 30	1312	NA	22.0	
0- 40	2114	NA	35.4	
0- 60	3784	NA	63.4	
0- 90	5621	NA	94.2	
90-120	345	NA	5.8	
90-150	346	NA	5.8	
90-180	346	NA	5.8	
0-180	5966	NA	100.0	

Zonal Lumen Summary (SHIELDED)				
Zone	Lumens	%Lamp	%Fixt	
0- 30	1183	NA	20.8	
0- 40	1975	NA	34.7	
0- 60	3765	NA	66.2	
0- 90	5639	NA	99.2	
90-120	46	NA	0.8	
90-150	46	NA	0.8	
90-180	46	NA	0.8	
0-180	5685	NA	100.0	

5-YEAR LIMITED WARRANTY
 VISIT AEILighting.com for Details
480-733-6594



AEI LED XWP WALLPACK

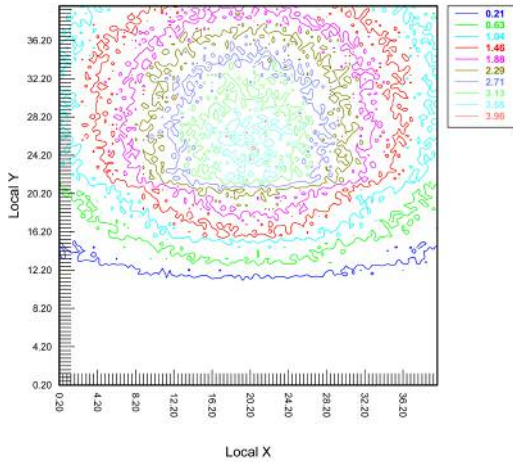
FOR DAMP & WET LOCATIONS

XWP WALLPACK

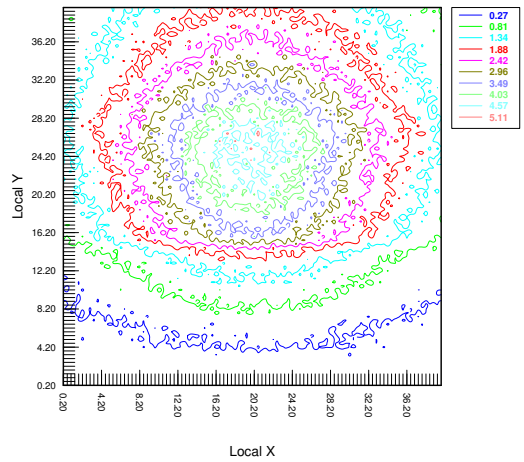
for DAMP & WET LOCATIONS

PHOTOMETRY

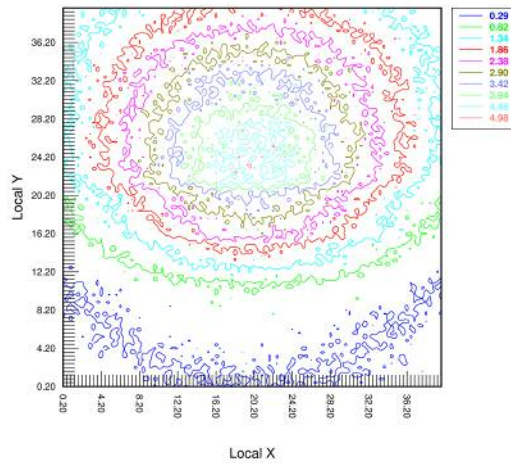
ILLUMINANCE PLANE CONTOUR PLOT - 60W



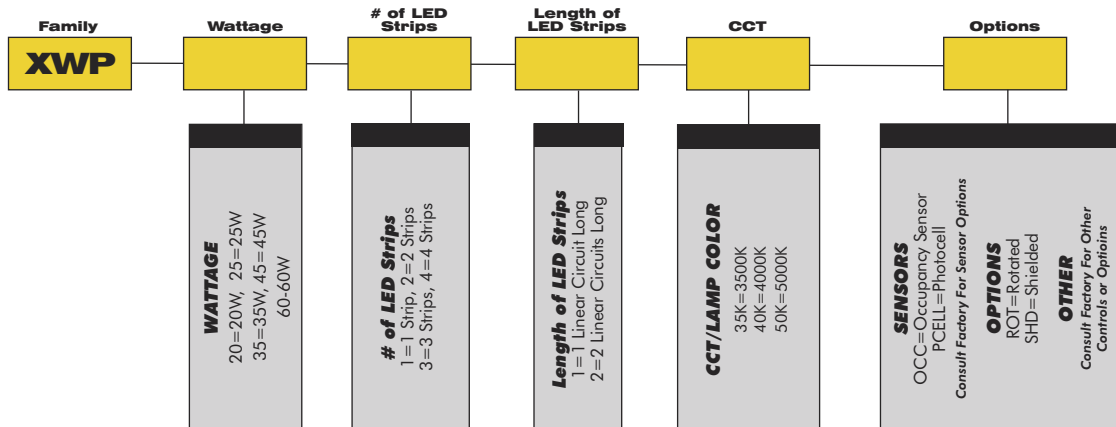
ILLUMINANCE PLANE CONTOUR PLOT - 60W - ROTATED



ILLUMINANCE PLANE CONTOUR PLOT - 60W - SHIELDED



ORDERING GUIDE



5-YEAR LIMITED WARRANTY
 VISIT AEILighting.com for Details
480-733-6594



AEI LED XWP WALLPACK

FOR DAMP & WET LOCATIONS