

The AEI LED PARKING PLUS GWD Series is perfect for all parking garage, canopy and low-bay applications. The GWD Series' linear array of LEDs provide the widest uniform lighting for challenging parking garage applications. Unparalleled energy savings, makes the GWD Series the best option for replacing traditional parking garage and canopy lighting sources.

### PARKING PLUS GWD Series

GARAGE OR CANOPY

55W, 82W & 115W



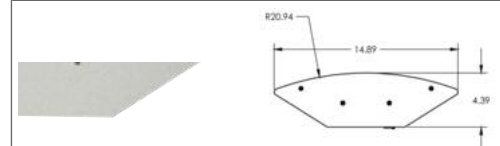
GWD Bottom View



GWD Side View



GWD End View



#### FEATURES

- USA-Made AEI Linear LED Light Engines
- High lumen LED output with multiple lumen output options
- Available in multiple colors and finishes
- Rated for a wide range of operating temperatures from:  
-40°C to 55°C, -40°F to 131°F
- Integral sensors for daylight and occupancy available
- 5-Year warranty on all fixture components

#### ELECTRICAL

- Universal input voltage 120-277 VAC, with an option for 347 or 480 VAC
- Integral LED driver features 0-10 Volt dimming, surge protection and selectable drive currents to tune your lighting requirements and save maximum energy
- Photocell, occupation sensor, integration and control system options available

#### LENS & OPTICAL

- 100% impact modified acrylic lens withstands wear & tear
- IP66-Rated to prevent entry of water, auto emissions, insects and dust
- Lens available in clear or frosted
- Available in 3000K, 4000K and 5000K CCT packages, each with 80+ CRI
- Lumens per model:
  - 4631 lumens for the GWD-55
  - 6878 lumens for the GWD-82
  - 9646 lumens for the GWD-115
- L70 lumen maintenance >60,000 hours when operating within specified temperatures
- Available in 55W, 82W and 115W options
- Varying light outputs (100%, 75% and 50%) and beam angles available. Contact AEI for details.

#### APPLICATIONS

- Surface & multi-story parking structures
- Underground parking garages
- Stairwells and hallways
- Subterra canopy applications

#### HOUSING

- Unique, heavy-duty all-aluminum, low-profile housing for years of trouble-free and worry-free illumination
- Housing is Made-In-The-USA
- Designed for superior heat dissipation to ensure unparalleled lumen maintenance and long usable life

#### FINISH

- Five-stage durable polyester powder coat painting process protects unit for years
- Powder-coat finish provides protection from the most extreme environments
- Optional finishes for unique applications are available. Contact AEI or your sales representative.



AEI LIGHTING

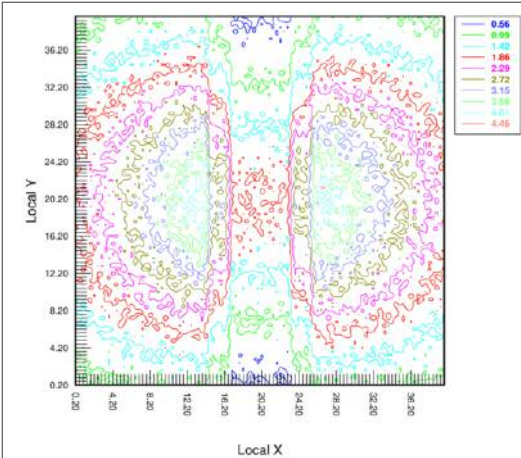
# PARKING PLUS GWD Series

GARAGE OR CANOPY 55W, 82W & 115W

AEI LED PARKING PLUS

PARKING GARAGE / CANOPY LOW-BAY LUMINAIRE

## PHOTOMETRY



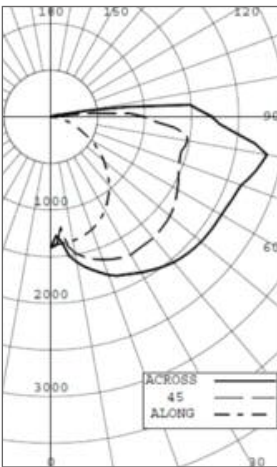
**PHOTOMETRY NOTES**  
for  
GWD Series 115W  
Model Tested

Total # Of LEDs  
384

Luminaire Output  
9646 LMS

Drivers Operating @  
120VAC, 115W

**Efficacy**  
83.9 lumens per watt



SIDE VIEW				LUMINOUS OPENING	
DEFECTS	COMPLETION	CRIMES	STATUS	S/HEI	2:1
ANGLE ALONG	22.5	45	47.5	ACROSS	
0	1804	1804	1804	2484	2484
5	1384	1404	1318	1344	133
10	1024	1044	952	1004	426
15	764	784	700	764	781
20	584	604	536	584	1023
25	464	484	412	464	1344
30	384	404	338	384	1764
35	334	354	292	334	2284
40	304	324	264	304	2904
45	284	304	244	284	3624
50	274	294	234	274	4344
55	274	294	234	274	5064
60	274	294	234	274	5784
65	274	294	234	274	6504
70	274	294	234	274	7224
75	274	294	234	274	7944
80	274	294	234	274	8664
85	274	294	234	274	9384
90	274	294	234	274	10104
95	274	294	234	274	10824
100	274	294	234	274	11544
105	274	294	234	274	12264
110	274	294	234	274	12984
115	274	294	234	274	13704
120	274	294	234	274	14424
125	274	294	234	274	15144
130	274	294	234	274	15864
135	274	294	234	274	16584
140	274	294	234	274	17304
145	274	294	234	274	18024
150	274	294	234	274	18744
155	274	294	234	274	19464
160	274	294	234	274	20184
165	274	294	234	274	20904
170	274	294	234	274	21624
175	274	294	234	274	22344
180	274	294	234	274	23064

LUMINOUS OPENING			
DC (ALONG)	DC (ACROSS)	S/HEI	2:1
1.2	1.2		2:1

ZONAL LUMENS AND PERCENTAGES			
ZONE	LUMENS	% LUMINAIRE	
0-30	1319	13.68	
0-40	2342	24.28	
0-60	4928	51.09	
0-90	8988	93.18	
40-90	6646	68.90	
40-90	4060	42.05	
90-180	458	4.72	
0-180	9646	100.00	

LUMINAIRE SUMMARY CD./SQ.F.			
ANGLE	ALONG	45	ACROSS
45	9741	16660	13438
55	8709	18676	12562
65	6891	21604	10717
75	5421	25439	8899
85	4504	44363	52457

LUMENS: 9646 lm			
EFFICACY: 83.9 lm/W			

## LIGHTING FACTS

Advanced Energy Ideas

### lighting facts®

A Program of the U.S. DOE

Light Output (Lumens)	9646
Watts	115
Lumens per Watt (Efficacy)	83

Color Accuracy	82
Color Rendering Index (CRI)	

Light Color  
Correlated Color Temperature (CCT): 3534 (Bright White)

LED Lumen Maintenance Projection at 10,000 Hours at 25°C Ambient*	98.14%
Warranty**	Yes

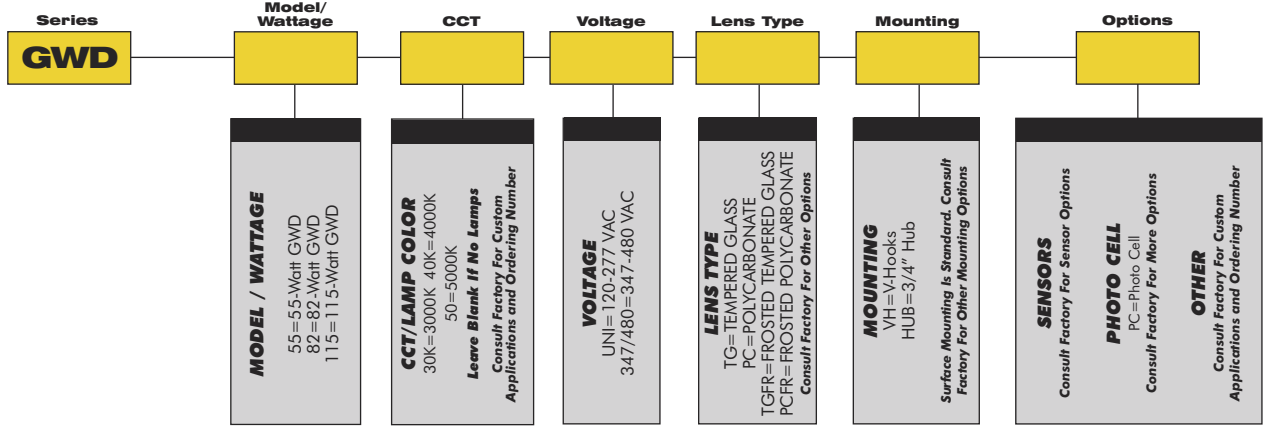
All results, except LED Lumen Maintenance, are according to IESNA LM-79-2008 Approved Method for the Electrical and Photometric Testing of Solid State Lighting. The U.S. Department of Energy (DOE) verifies product test data and results.

\* Based on TM-21 projections for the light source.  
\*\* See [www.lightingfacts.com/products](http://www.lightingfacts.com/products) for details.

Registration Number: T182-CCT8Y (8/2011)  
Model Number: A-GWD-XW-AW-LM  
Type: Parking garage fixture



## ORDERING GUIDE



**5-YEAR LIMITED WARRANTY**  
VISIT [AEILighting.com](http://AEILighting.com) for Details  
**480-733-6594**

