

AEI's LED Linear Retrofit Kits offer an economical solution to fluorescent tubes, creating a long-lasting and energy saving upgrade -- a truly green solution without replacing existing fixture bodies. The AEI Linear LED Light Engine fits most commercially made fluorescent fixtures with multiple voltage, wattage and output versions.

LED Linear Retrofit Kits

FOR RETROFITTING FLUORESCENT FIXTURES OF ALL WATTAGES



1 'LSF' with 'OPL' option



2 'TRK' '9UP' '4FT' or 'TRK' '2X2' '2FT'



3 RTK [Retrofit With Flat Strip]



4 DIFFUSE LED COVER for Open, Parabolic and Louver-style fixtures

Note: Not all AEI LED Retrofit products are DLC certified. Please consult the AEI factory for further information.



FEATURES

- USA-Made AEI Linear LED Light Engines
- Aluminum backed inserts to update any fluorescent fixture style
- Multiple voltages, wattages and color temperatures available
- Multiple wattages available to tailor light levels and maximize energy savings
- Overlays available for louvered fixtures to create a luminous panel effect
- Shielding options for strip style applications to eliminate direct view of LEDs
- Nichia LEDs standard - other brand emitters available
- Unsurpassed thermal contact to ensure long life
- DLC Listed - Consult AEI Factory for a list of DLC-Listed models
- 5-Year Limited Warranty - visit AEILighting.com for more details

ELECTRICAL

- Wiring from driver is low-voltage Class 2 for a safe, easy and reliable upgrade
- 120-277V Available - Consult for other voltages
- 0-10 Volt dimming available for easy daylight harvesting
- Occupation sensor, integration and control system options available

MATERIALS

- White powdercoated aluminum body, with an option of White Optics Material for improved specular reflectance - Consult AEI

OPTICAL

- 85 CRI Standard - Higher CRI available - Consult AEI for options
- Color temperatures include 3000K, 3500K, 4000K and 5000K
- Lumen maintenance: L70 - 115,000 hours, L80 - 70,000 hours, L90 - 35,000 hours depending on ambient temperatures
- Different light distributions and beam angles available - contact AEI for details.

APPLICATIONS

- AEI can produce a kit to convert almost any existing or new fluorescent design
- Consult your AEI representative regarding your particular application



AEI LIGHTING

AEI LED Linear Retrofit Kits

FOR REPLACING FLUORESCENT

LED Linear Retrofit Kits

FOR RETROFITTING FLUORESCENT FIXTURES OF ALL WATTAGES



AEI LED Linear Retrofit Kits

FOR REPLACING FLUORESCENT

WATTAGE TABLE for AEI LINEAR LED

LEDs per Foot	Length of Circuit	Min. Wattage	Max. Wattage	Min. Lumens	Max. Lumens
9	1 ft	2.5	13	325	1690
9	2 ft	5	26	650	3380
9	3 ft	7.5	38	975	4940
9	4 ft	10	51	1300	6630
12	3 in	0.5	3	65	390
12	6 in	1	6	130	780
12	9 in	1.75	9	227.5	1170
12	12 in	3	12	390	1560
18	1 ft	5	25	650	3250
18	2 ft	10	50	1300	6500
18	3 ft	15	75	1950	9750

ORDERING GUIDES for TRK, RTK & LSF

Series

TRK

Troffer Kit Dimensions

KIT DIMENSIONS
2X2=2 FT x 2FT Dimensions
2X4=2FT x 4FT Dimensions
4X4=4FT x 4FT Dimensions

LED

LED
9U = 2.5-13 W/Circuit
12U = 3-12 W/Circuit
18U = 5-25 W/Circuit

Number Of Strips

NUMBER OF STRIPS
1=1 Strip = 1 LED Circuit
2=2 Strips = 2 LED Circuits
3=3 Strips = 3 LED Circuits
4=4 Strips = 4 LED Circuits

Length Of Strips

LENGTH OF STRIPS
1=1-Foot
2=2-Feet
3=3-Feet
4=4-Feet

CCT

CCT/LAMP COLOR
3K=3000K 35K=3500K
4K=4000K 5K=5000K
Leave Blank If No Lamps
Consult Factory For Custom Applications and Ordering Number

Voltage

VOLTAGE
UNI=120-277 VAC
347=347 VAC
480=480 VAC

Lens Type

LENS TYPE
0=NO LENS
OPL=OPAL LENS
DIF=DIFFUSE LENS
FOC=FOCUSING OVERLAY
(for recessed or lensed fixtures only)

Options

SENSORS
Consult Factory For Sensor Options

COLORS
The Standard Color Is WHITE
Consult Factory For More Options

OTHER
Consult Factory For Custom Applications and Ordering Number

Note: The TRK is not DLC Certified

Series

RTK

LED

LED
9U = 2.5-13 W/Circuit
12U = 3-12 W/Circuit
18U = 5-25 W/Circuit

Length Of Strips

LENGTH OF STRIPS
1=1-Foot
2=2-Feet
3=3-Feet
4=4-Feet

Number Of Strips

NUMBER OF STRIPS
1=1 Strip
2=2 Strips
3=3 Strips
4=4 Strips

Number Of Circuits

NUMBER OF CIRCUITS
1=1 LED Circuit
2=2 LED Circuits
3=3 LED Circuits
4=4 LED Circuits

CCT

CCT/LAMP COLOR
3K=3000K 35K=3500K
4K=4000K 5K=5000K
Leave Blank If No Lamps
Consult Factory For Custom Applications and Ordering Number

Voltage

VOLTAGE
UNI=120-277 VAC
347=347 VAC
480=480 VAC

Lens Type

LENS TYPE
0=NO LENS
OPL=OPAL LENS
DIF=DIFFUSE LENS
FOC=FOCUSING OVERLAY
(for recessed or lensed fixtures only)

Options

SENSORS
Consult Factory For Sensor Options

COLORS
The Standard Color Is WHITE
Consult Factory For More Options

OTHER
Consult Factory For Custom Applications and Ordering Number

Note: The RTK is not DLC Certified

Note: Not all AEI LED Retrofit products are DLC certified. Please consult the AEI factory for further information.



LED Linear Retrofit Kits

FOR RETROFITTING FLUORESCENT FIXTURES OF ALL WATTAGES



AEI LED Linear Retrofit Kits

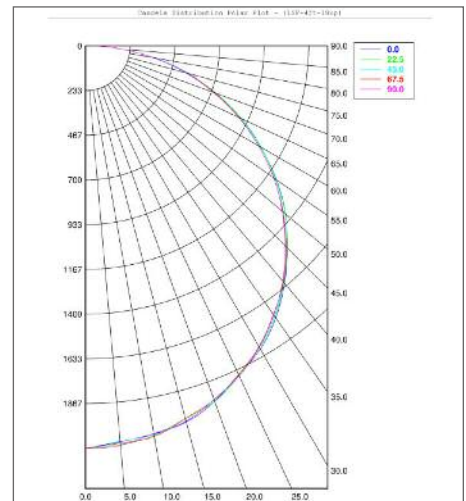
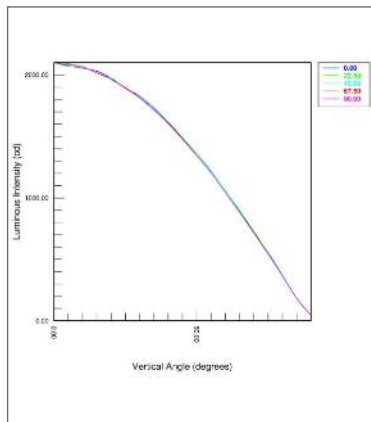
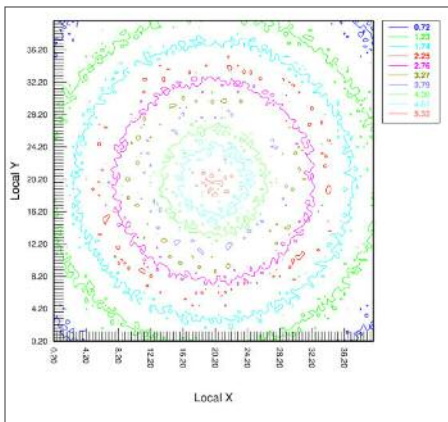
FOR REPLACING FLUORESCENT

Series	Driver Setting	LED	Length Of Strips	Number Of Strips	Number Of Circuits	CCT	Voltage	Lens Type	Options
LSF									
	DRIVER SETTING 1 = LOW 2 = MEDIUM 3 = HIGH 4 = HO (18U 2.5A DRIVER)	LED 9U = 2.5-13 W/Circuit 12U = 3-12 W/Circuit 18U = 5-25 W/Circuit	LENGTH OF STRIPS 1 = 1-Foot 2 = 2-Foot 3 = 3-Foot 4 = 4-Foot	NUMBER OF STRIPS 1 = 1 Strip 2 = 2 Strips 3 = 3 Strips 4 = 4 Strips	NUMBER OF CIRCUITS 1 = 1 LED Circuit 2 = 2 LED Circuits 3 = 3 LED Circuits 4 = 4 LED Circuits	CCT/LAMP COLOR 3K=3000K 35K=3500K 4K=4000K 5K=5000K Leave Blank if No Lamps Consult Factory For Custom Applications and Ordering Number	VOLTAGE UNI=120-277 VAC 347=347 VAC 480=480 VAC	LENS TYPE 0=NO LENS OPL=OPAL LENS DIF=DIFFUSE LENS FOC=FOCUSING OVERLAY (for recessed or lensed fixtures only)	SENSORS Consult Factory For Sensor Options COLORS The Standard Color Is WHITE Consult Factory For More Options OTHER Consult Factory For Custom Items

Note: The LSF is DLC Certified



PHOTOMETRY



LIGHTING FACTS

For TRK Retrofit: 2x4-9U-2-4LC-5K-UNI

LED lighting facts
A Program of the U.S. DOE

Light Output (Lumens)	5528
Watts	58.4
Lumens per Watt (Efficacy)	94
Color Accuracy Color Rendering Index (CRI)	83
Light Color Correlated Color Temperature (CCT)	5053 (Daylight)
LED Lumen Maintenance Projection at 25,000 Hours at 25°C Ambient*	91.81%
Warranty**	Yes

All results, except LED Lumen Maintenance, are according to IESNA LM-79-2008. Approved Method for the Electrical and Photometric Testing of Solid-State Lighting. The U.S. Department of Energy (DOE) verifies product test data and results.

* Based on TM-21 projections for the light source.
** See www.lightingfacts.com/products for details.

Registration Number: -AR7F4 (3/20/2014)
Model Number: TRK 2x4 9U 2 4LC 5K UNI
Type: Retrofit Kit - Tray/Grd Ceiling

For LSF Retrofit: 9U 4FT 1-4LC 5K UNI

LED lighting facts
A Program of the U.S. DOE

Light Output (Lumens)	4827
Watts	56.97
Lumens per Watt (Efficacy)	84.7
Color Accuracy Color Rendering Index (CRI)	83
Light Color Correlated Color Temperature (CCT)	5128 (Daylight)
LED Lumen Maintenance Projection at 25,000 Hours at 25°C Ambient*	91.81%
Warranty**	Yes

All results, except LED Lumen Maintenance, are according to IESNA LM-79-2008. Approved Method for the Electrical and Photometric Testing of Solid-State Lighting. The U.S. Department of Energy (DOE) verifies product test data and results.

* Based on TM-21 projections for the light source.
** See www.lightingfacts.com/products for details.

Registration Number: -QW28N (5/19/2014)
Model Number: LSF 9U 4FT 1-4LC 5K UNI
Type: Luminaire - Industrial

CONSULT AEI

For Special Colors & Applications Such As 22K, 27K, 65K & RGB

Minimum Order Quantities & Longer Lead Times Apply

5-YEAR LIMITED WARRANTY

VISIT AEILighting.com for Details

480-733-6594

