



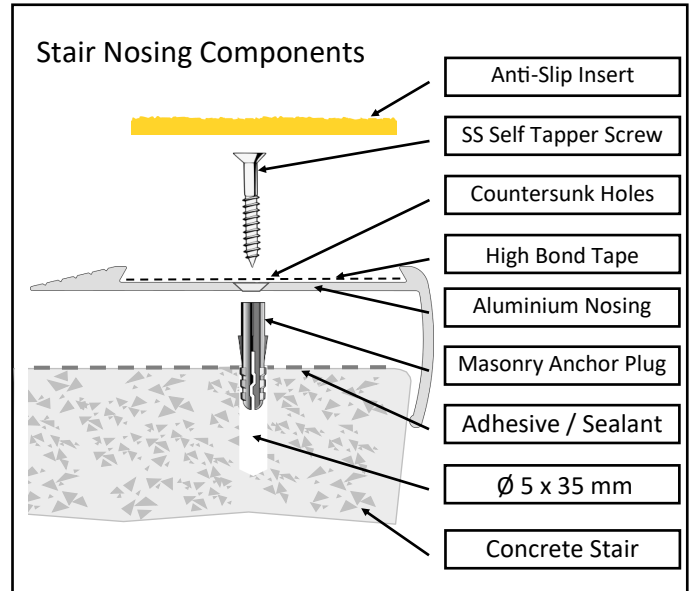
STAIR NOSING INSTALLATION INSTRUCTIONS

Equipment Required

- Drill (with hammer function for concrete).
- 5mm masonry drill bit for concrete (Drill depth 35mm).
- Adjustable torque cordless screwdriver.
- Hack or Drop Saw, Mallet, Roller.
- Adhesive / Sealant and dispensing gun (recommended).
- Acetone or similar for adhesive clean up.
- Wipes or cloth rags.

Equipment Supplied

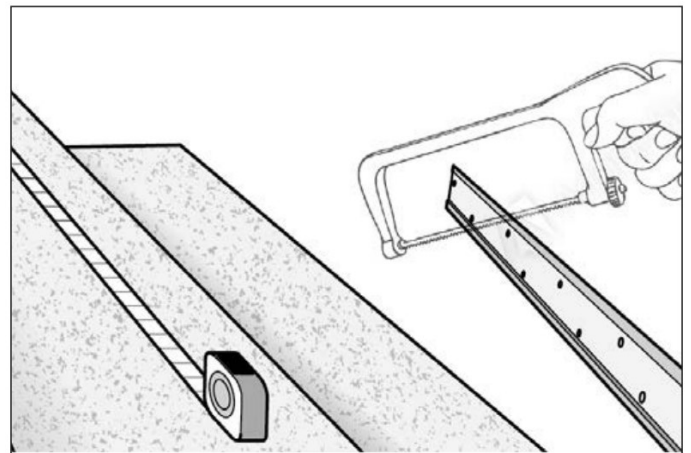
- Aluminium nosing profile
- Anti-slip, contrast insert
- Countersunk self-tapping screws (6g x 25mm)
- Nylon anchor plugs for concrete (5g x 25mm)



Profile Installation

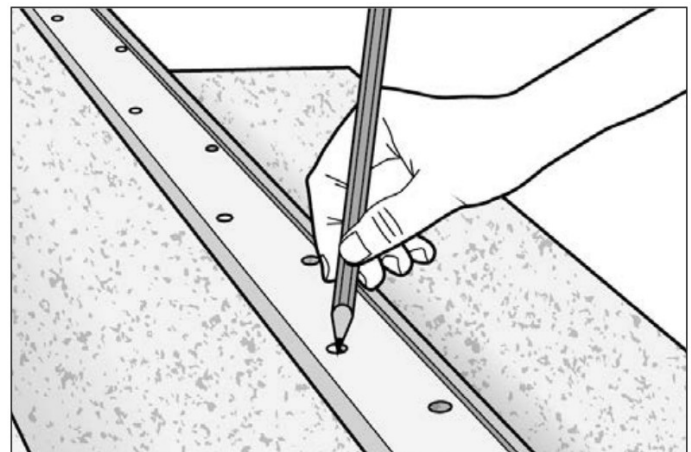
Step 1

- Stair nosings are supplied cut to customer specified length.
- Test fit the nosing and if necessary, cut the profile to the required length.
- Profiles are pre-drilled at the factory.



Step 2

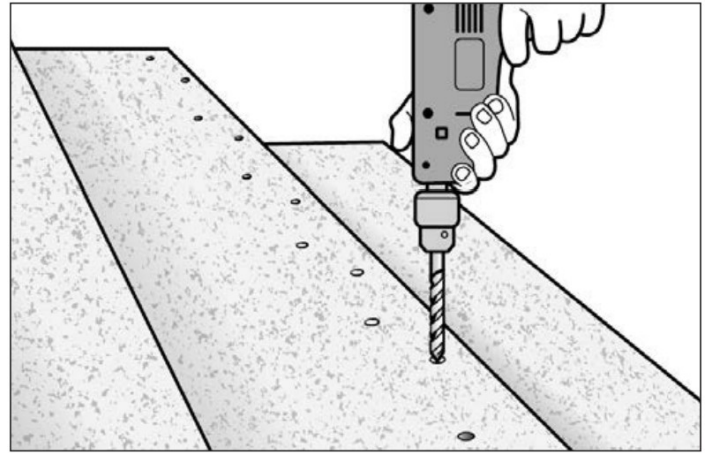
- Offer the profile to the stair edge and use a pencil or marker to mark the location for the pre-drilled countersunk holes.



Step 3

- Remove the profile and drill the concrete plug holes with the 5mm masonry drill bit.

Tip: If you don't have a depth gauge for your drill, it may help to measure and mark the depth to drill and wrap tape around the masonry bit to ensure the correct and uniform depth.



Step 4

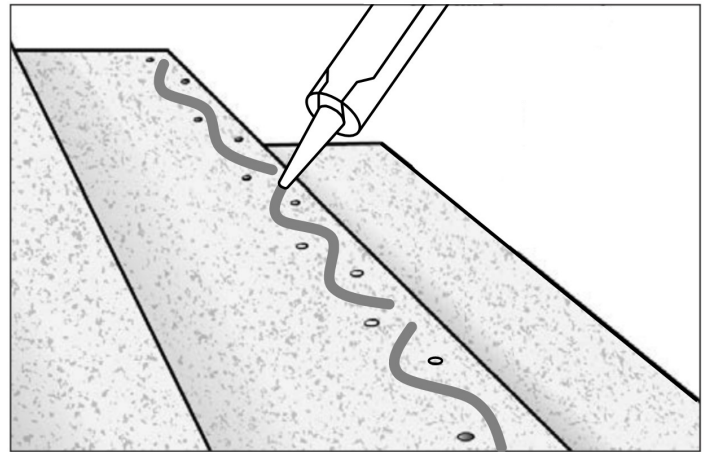
- Vacuum or blow away the concrete dust from drilling and push in by hand or lightly tap the plugs into the holes with a hammer.



Step 5

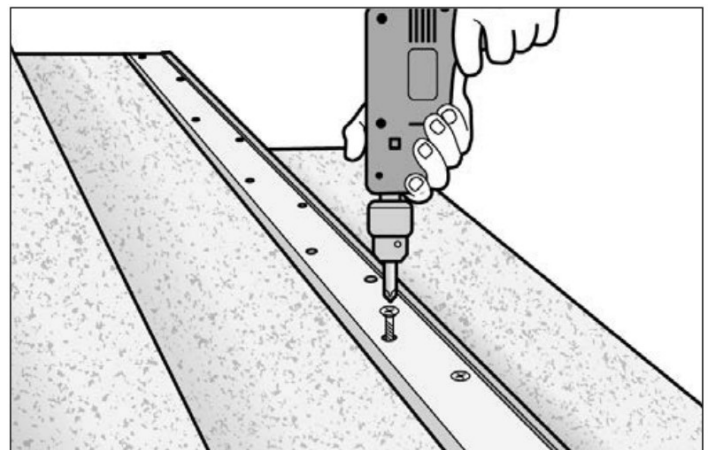
- We always advise using a quality, flexible adhesive in addition to screw fixing the profile. This eliminates stair tread 'chattering' later.
- Dispense a wave of adhesive between the holes.

Tip: It is recommended to leave gaps in the bead of adhesive so water does not pool behind the profile.



Step 6

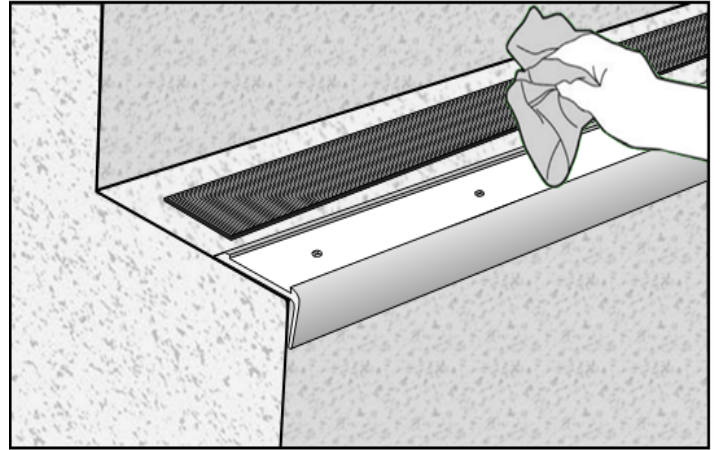
- Place the cut profile length into its fixed position on the stair nosing edge (aligning with the drilled holes if it is a concrete substrate).
- Screw fix the profile using the 6g x 25mm self-tapping screws.



Insert Installation

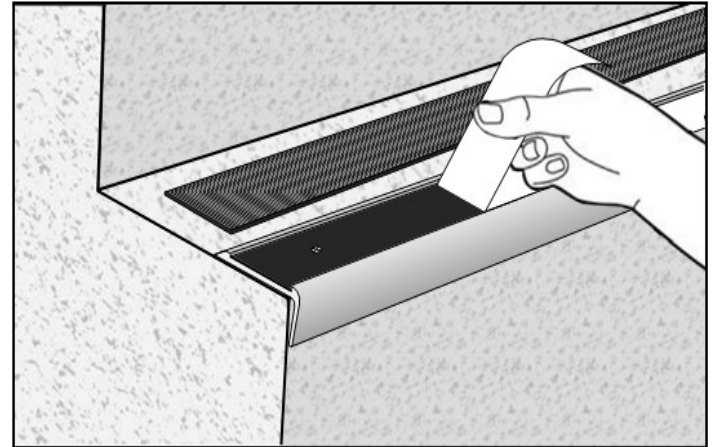
Step 1

- Ensure the underside of the insert is clean from dust and residues. Wipe down with a cleaning solvent (Isopropyl Alcohol, Acteone or similar).



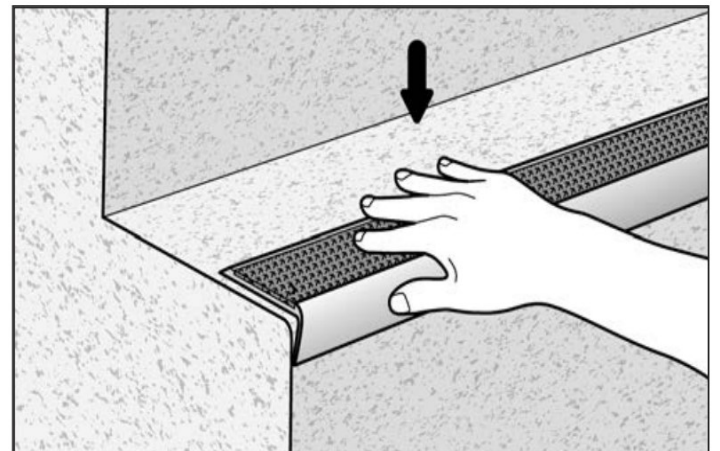
Step 2

- Remove the white adhesive backing liner from the stair nosing.



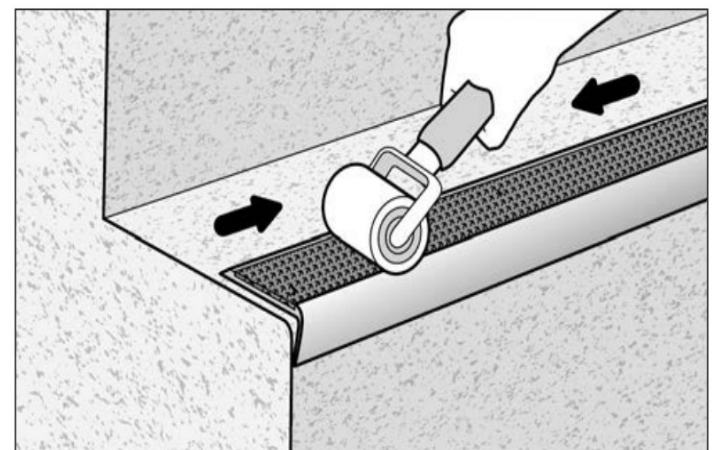
Step 3

- Install by placing the Insert into the nosing cavity and pressing into place without undue stretching.



Step 4

- Once in place, roll over the Insert to ensure consistent adhesion and a secure bond.
- Please take care not to stretch the Santoprene Insert when rolling.



Installation complete