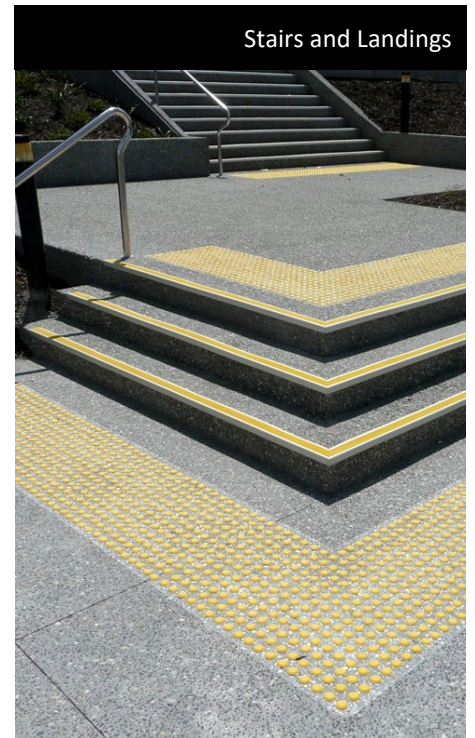
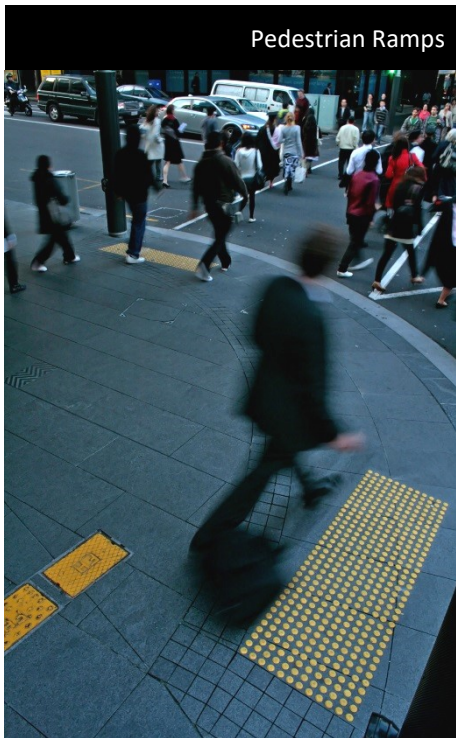




TacPro POLYURETHANE TACTILE STUD SYSTEM

TacPro Polyurethane Tactile Studs and Bars have been developed as a retrofit system for new and existing surfaces. They are manufactured locally using a specially formulated, high quality Thermoplastic Polyurethane (TPU). TacPro Polyurethane Tactile Indicators outlast and outperform all competition resulting in Australasia's leading brand.



FEATURES



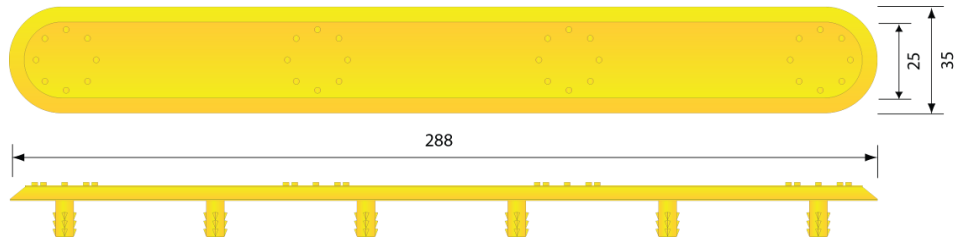
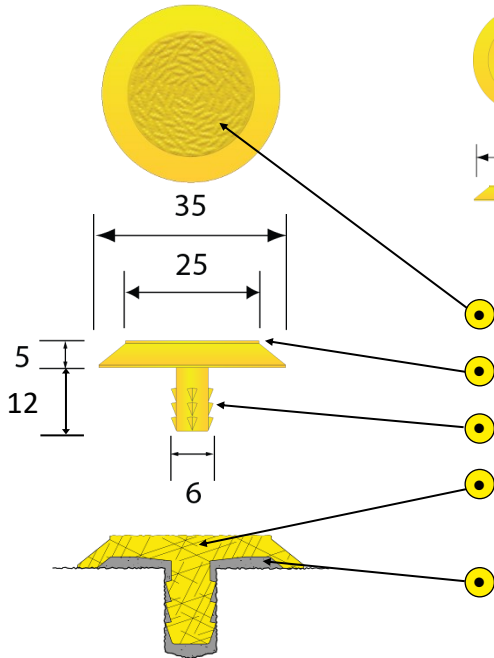
- The Tactile Stud System can be installed to almost any existing or new surface, adapting neatly to uneven surfaces.
- Installation is cost effective with no substrate removal required.
- The high sheer strength, UV light stable material ensures excellent durability with virtually no maintenance.
- Individual Tactile Indicators provide greater aesthetic appeal on many surfaces.
- Our installations are always carried out using a specially formulated two part epoxy in addition to friction fitting the studs - this provides a superior mechanical bond with the substrate ensuring the long term integrity of the installation by denying access to water and debris under the unit.





Warning / Hazard - Type B

Directional / Leading - Type C



- Unique rice grain anti-slip surface pattern does not trap dirt.
- Raised top edge greatly improves slip resistance (R11).
- Barbed shaft for friction fit allowing immediate foot traffic while epoxy cures.
- Polyurethane material contains UV and Microbial inhibitors and demonstrates excellent resistance to hydrolysis and ground level ozone.
- Cavity under the Tactile designed to present the greatest epoxy coverage to the ground surface.

Slip Resistance & Luminance Values

CSIRO - SLIP RESISTANCE TEST

AS/NZS 4586:2004 Slip resistance classification of new pedestrian surface materials, Appendix D: OIL-WET Ramp
Mean overall acceptance angle: 26.2°
Class: **R 11 [HIGH]**

MRC - MEASUREMENT OF LUMINANCE REFLECTANCE (LRV)

- **Safety Yellow = 60.3**
- **Black = 2.8**
- **White = 85.6**
- **Light Grey = 42.5**

(45% Luminance contrast with surrounding substrate required).

Installation

- Installation utilises a 5mm thick rubber drilling template that easily conforms to any uneven surface.
- The Tactile Indicators (Warning Studs and Directional Bars) are epoxy fixed in addition to barb friction fitted.
- As each Tactile is installed individually and sealed with epoxy, water and debris retention under the unit is eliminated and vastly reduces the risk of installation failure.
- Our proprietary epoxy will permanently bond TGSIs to almost any solid substrate including concrete, asphalt, marble, ceramic, stone, glass, metals and most plastics in a wide range of weather conditions.



TacPro Tactile Ground Surface Indicators are locally designed and manufactured in compliance with a number of national standards and guidelines:

- AS/NZS 1428.4.1:2009 Design for Access and Mobility, Part 4, *Tactile Indicators*.
- AS/NZS 4586:2004 Slip resistance classification of new pedestrian surface materials, Appendix D: OIL-WET Ramp.
- AS HB 198:2014 *Guide to the Specification and Testing of Slip Resistance of Pedestrian Surfaces*.
- National Construction Code 2016 - Section D - clause 3.8 (TGSIs).

