

iCylinder 05[®]

Manual
Manuel



CE

Os seguintes direitos são reservados:

- Quaisquer alterações, sem aviso prévio, feitas à funcionalidade ou aparência deste produto invalidarão a garantia.
- O uso deste produto em qualquer ambiente ou de qualquer outra forma que não seja especificado aqui também invalidará a garantia.

iCylinder 05[®]

PT

Fácil de instalar, não requer perfuração, sem fiação e sem trabalho de carpintaria. Desbloqueie através de dispositivo móvel, por código PIN, cartão RFID ou uma chave mecânica de emergência. Uma Solução orientada para Airbnb e casas de férias. Sistema Wi-Fi com gateway e aplicação para gerar chaves remotamente e enviar as chaves para qualquer lugar do mundo.



na caixa

iCylinder 05 - 1

Saco de ferramentas - 1

Manual - 1

ferramentas

psm9.6x2.8mm - 1

psm7.7x1.8mm - 2

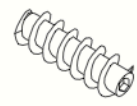
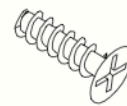
sd1.47mm - 1

Chave Magnética de Emergência - 2

iC Card - 2

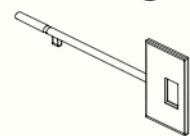
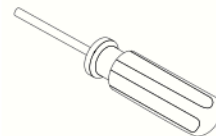
psm9.6x2.8mm

psm7.7x1.8mm



sd1.47mm

Chave Magnética de emergência



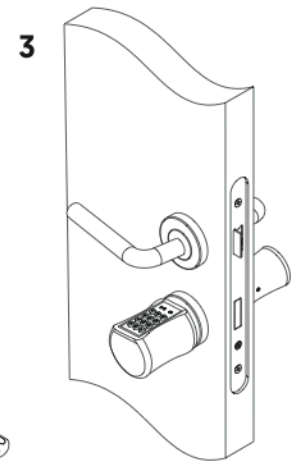
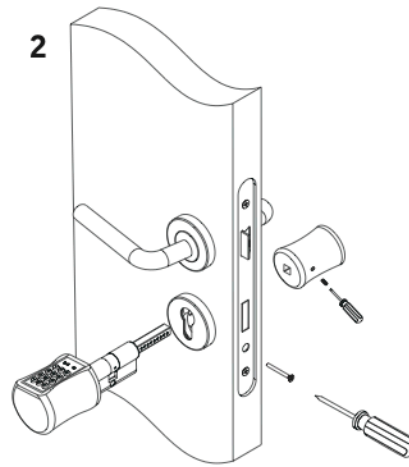
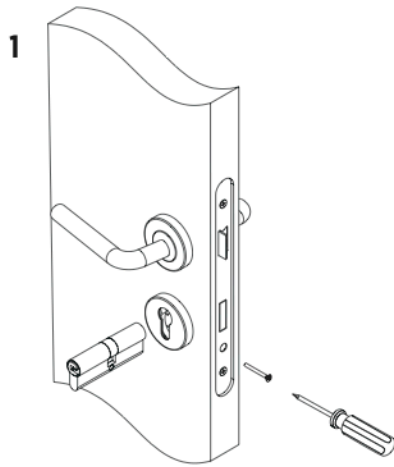
iC Card



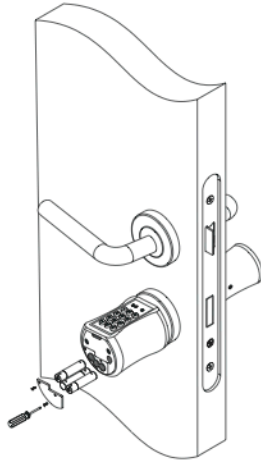
iCylinder 05®

PT

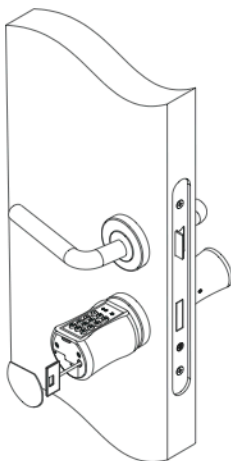
instalação



**mudar
baterias**



**usar chave
magética**



iCylinder 05®

CONFIGURATION

A) Overview of the password:

There are total of 30 sets of passwords. The first group is the administrative password. The rest are ordinary passwords. The password is 6-12 digits in length. Add garbled characters before and after opening the door. The total length of the password is up to 30 digits.

B) Card overview:

Up to 200 IC cards can be registered. All cards are user cards. Do not have any administrative rights.

C) Management password registration and modification:

Initial state. Press any key on the keyboard once. After lighting the keyboard light, Press **↵** first. Then Press **↵** again. Enter the initial password 123456 and press **↵** to confirm, you can enter the management password registration status. Enter the administrator password (6-12 digits) Press **↵** to confirm and enter the administrator password again (6-12 digits) and press **↵** to confirm. The keyboard light is off. The management password was successfully registered.

.Press any key on the keyboard once. After lighting the keyboard light. Press **↵** first Then Press **↵** again, Enter the management password, press **↵** to confirm and press the No:7 button. The keyboard light flashes 3 times. Enter the new administrative password to press **↵** Please enter the new administrator password again press **↵** confirm Successfully modified

D) Set User Password:

Press any key on the keyboard once. After lighting the keyboard light Press **↵** first, then press **↵** again. Enter the management password, press **↵** to confirm and press the No:1 button. The keyboard light flashes 3 times. Enter the user password and press **↵** to confirm. Enter the user password again and press **↵** to confirm. The setting is successful.

E) The user password is deleted:

Press any key on the keyboard once. After lighting the keyboard light, Press **↵** first, then press **↵** again. Enter the management password, press **↵** to confirm and press the No:2 button. The keyboard light flashes 3 times. Enter the user password you want to delete by pressing **↵** confirm. The password was deleted successfully.

F) IC card registration:

Press any key on the keyboard once. After lighting the keyboard light Press **↵** first, then press **↵** again. Enter the management password, press **↵** to confirm and press the No:3 button. The keyboard light flashes 3 times. Brush the IC card. Registration was successful. It can be registered continuously until it is full. Or press **↵** withdraws.

G) IC card deletion:

Press any key on the keyboard once. After lighting the keyboard light Press **↵** first, then press **↵** again. Enter the management password, press **↵** to confirm and press the No:4 button. The keyboard light flashes 3 times. At this point, brush the card you want to delete. This IC card can be deleted.

H) IC card empty:

Press any key on the keyboard once. After lighting the keyboard light Press **↵** first, then press **↵** again. Enter the management password, press **↵** to confirm and press the No:5 button. The keyboard light flashes 3 times. Now press **↵** to Confirm. All IC cards can be deleted.

I) Empty system:

Press any key on the keyboard once. After lighting the keyboard light Press **↵** first, then press **↵** again. Enter the management password, press **↵** to confirm and press the No:6 button. The keyboard light flashes 3 times. Press **↵** again confirms. Clear all passwords and IC cards. Restore the initial state. The initial password is 123456.

J) Set the lock delay time:

Press any key on the keyboard once. After lighting the keyboard light Press **↵** first, then press **↵** again. Enter the management password, press **↵** to confirm and press the No:8 button. The keyboard light flashes 3 times. Enter a single number from 0-9. You can set the unlock time to extend. The extension time is the input number + 5 seconds. For example: press 3 is for 8 seconds.

K) Open the door operation:

Press any key on the keyboard once. After lighting the keyboard light. Enter the unlock password to press **↵** confirm. Verification passed. The blue light is on. The door is unlocked. After the opening time, the blue light is off. The door lock is closed. Press any key on the keyboard once. After lighting the keyboard light. Swipe the card. The verification passes and the blue light are on. The door is unlocked. After the opening time, the blue light is off. The door lock is closed.

L) low battery alarm:

Voice prompt below 3.6v: Please replace the battery if the battery is low.

M) Enter the error lock:



Enter the password incorrectly 3 times in a row. The system cannot be operated for 3 minutes.

N) The button is off






After pressing the button, the light is on for ten seconds without operation and automatically exits the operating system > The light is off

Press the back button. Exit system > The light is off.

D) Normally open mode:

Press any key on the keyboard once. After lighting the keyboard light. Enter the unlock password to press  confirm. After the verification is passed, press the button three times  to enter the normally open state. Press any key to exit to enter normal open state.

E) The user password is deleted:

Press any key on the keyboard once. After lighting the keyboard light,  , Press  first, then press  again. Enter the management password, press  to confirm and press the No:2 button. The keyboard light flashes 3 times. Enter the user password you want to delete by pressing  confirm. The password was deleted successfully.

F) Low battery alarm:

When the battery is below 3.6V, three "beep" sounds when turned on. The battery must be replaced in time.

iCylinder 05[®]



Easy to install, no drilling required and no carpentry work. Unlock by mobile device, pin code, RFID card or mechanical emergency key. An Airbnb solution with Wi-Fi system through gateway and APP to generate keys remotely and send them to anywhere in the world.



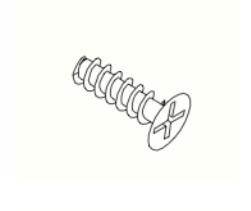
in the box

- iCylinder 05 - 1
- Bag of tools - 1
- Manual - 1

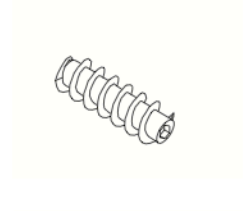
tools

- psm9.6x2.8mm - 1
- psm7.7x1.8mm - 2
- sd1.47mm - 1
- Magnetic Emergency Key - 2
- iC Card - 2

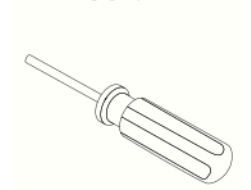
psm9.6x2.8mm



psm7.7x1.8mm



sd1.47mm



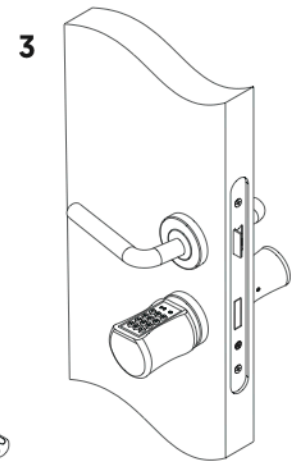
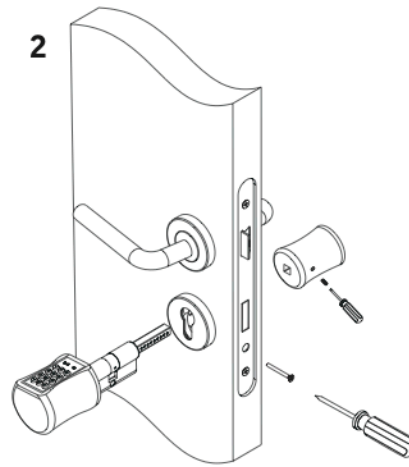
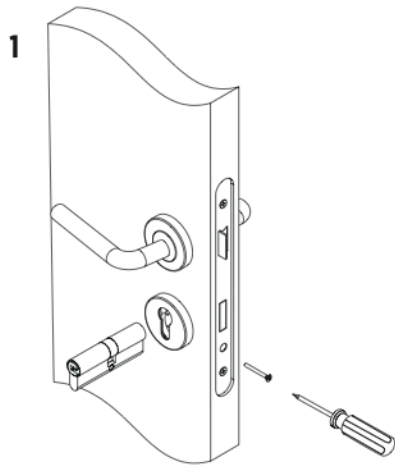
**Magnetic
Emergency Key**



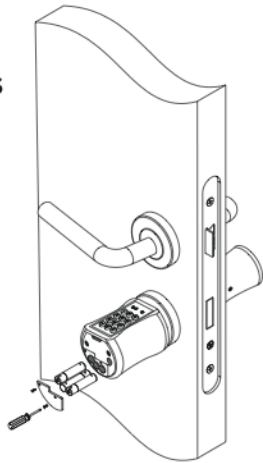
iC Card



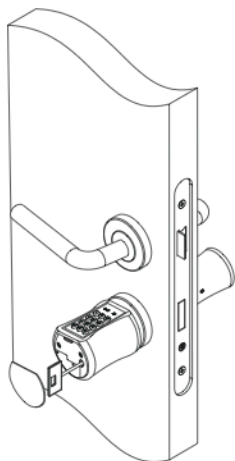
installation



**changes
batteries**



**using
magnetic
key**



iCylinder 05®

CONFIGURATION

A) Overview of the password:

There are total of 30 sets of passwords. The first group is the administrative password. The rest are ordinary passwords. The password is 6-12 digits in length. Add garbled characters before and after opening the door. The total length of the password is up to 30 digits.

B) Card overview:

Up to 200 IC cards can be registered. All cards are user cards. Do not have any administrative rights.

C) Management password registration and modification:

Initial state. Press any key on the keyboard once. After lighting the keyboard light, Press first. Then Press again. Enter the initial password 123456 and press to confirm, you can enter the management password registration status. Enter the administrator password (6-12 digits) Press to confirm and enter the administrator password again (6-12 digits) and press to confirm. The keyboard light is off. The management password was successfully registered.

. Press any key on the keyboard once. After lighting the keyboard light. Press first Then Press again, Enter the management password, press to confirm and press the No:7 button. The keyboard light flashes 3 times. Enter the new administrative password to press Please enter the new administrator password again press confirm Successfully modified

D) Set User Password:

Press any key on the keyboard once. After lighting the keyboard light Press first, then press again. Enter the management password, press to confirm and press the No:1 button. The keyboard light flashes 3 times. Enter the user password and press to confirm. Enter the user password again and press to confirm. The setting is successful.

E) The user password is deleted:

Press any key on the keyboard once. After lighting the keyboard light, , Press first, then press again. Enter the management password, press to confirm and press the No:2 button. The keyboard light flashes 3 times. Enter the user password you want to delete by pressing confirm. The password was deleted successfully.

F) IC card registration:

Press any key on the keyboard once. After lighting the keyboard light Press first, then press again. Enter the management password, press to confirm and press the No:3 button. The keyboard light flashes 3 times. Brush the IC card. Registration was successful. It can be registered continuously until it is full. Or press withdraws.

G) IC card deletion:

Press any key on the keyboard once. After lighting the keyboard light Press first, then press again. Enter the management password, press to confirm and press the No:4 button. The keyboard light flashes 3 times. At this point, brush the card you want to delete. This IC card can be deleted.

H) IC card empty:

Press any key on the keyboard once. After lighting the keyboard light Press first, then press again. Enter the management password, press to confirm and press the No:5 button. The keyboard light flashes 3 times. Now press to Confirm. All IC cards can be deleted.

I) Empty system:

Press any key on the keyboard once. After lighting the keyboard light Press first, then press again. Enter the management password, press to confirm and press the No:6 button. The keyboard light flashes 3 times. Press again confirms. Clear all passwords and IC cards. Restore the initial state. The initial password is 123456.

J) Set the lock delay time:

Press any key on the keyboard once. After lighting the keyboard light Press first, then press again. Enter the management password, press to confirm and press the No:8 button. The keyboard light flashes 3 times. Enter a single number from 0-9. You can set the unlock time to extend. The extension time is the input number + 5 seconds. For example: press 3 is for 8 seconds.

K) Open the door operation:

Press any key on the keyboard once. After lighting the keyboard light. Enter the unlock password to press confirm. Verification passed. The blue light is on. The door is unlocked. After the opening time, the blue light is off. The door lock is closed. Press any key on the keyboard once. After lighting the keyboard light. Swipe the card. The verification passes and the blue light are on. The door is unlocked. After the opening time, the blue light is off. The door lock is closed.

L) low battery alarm:

Voice prompt below 3.6v: Please replace the battery if the battery is low.

M) Enter the error lock:



Enter the password incorrectly 3 times in a row. The system cannot be operated for 3 minutes.

N) The button is off






After pressing the button, the light is on for ten seconds without operation and automatically exits the operating system > The light is off

Press the back button. Exit system > The light is off.

D) Normally open mode:

Press any key on the keyboard once. After lighting the keyboard light. Enter the unlock password to press  confirm. After the verification is passed, press the button three times  to enter the normally open state. Press any key to exit to enter normal open state.

E) The user password is deleted:

Press any key on the keyboard once. After lighting the keyboard light,  , Press  first, then press  again. Enter the management password, press  to confirm and press the No:2 button. The keyboard light flashes 3 times. Enter the user password you want to delete by pressing  confirm. The password was deleted successfully.

F) Low battery alarm:

When the battery is below 3.6V, three "beep" sounds when turned on. The battery must be replaced in time.

iCylinder 05®

ES

Fácil de instalar, sin necesidad de taladrar y sin trabajos de carpintería. Desbloqueo por dispositivo móvil, código pin, tarjeta RFID o llave de emergencia mecánica. Una solución de Airbnb con sistema Wi-Fi a través de pasarela y aplicación para generar claves de forma remota y enviarlas a cualquier parte del mundo.



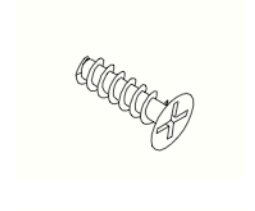
en la caja

- iCylinder 05 - 1
- Bag of tools - 1
- Manual - 1

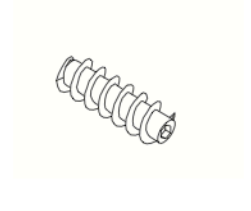
herramientas

- psm9.6x2.8mm - 1
- psm7.7x1.8mm - 2
- sd1.47mm - 1
- Llave magnética de emergencia - 2
- iC Card - 2

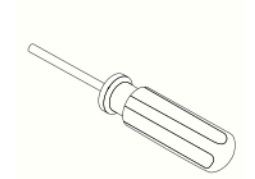
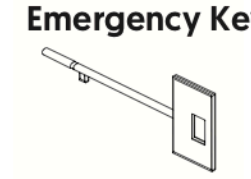
psm9.6x2.8mm



psm7.7x1.8mm



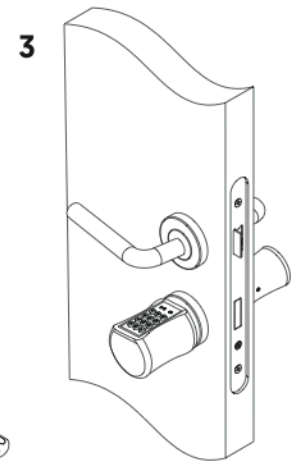
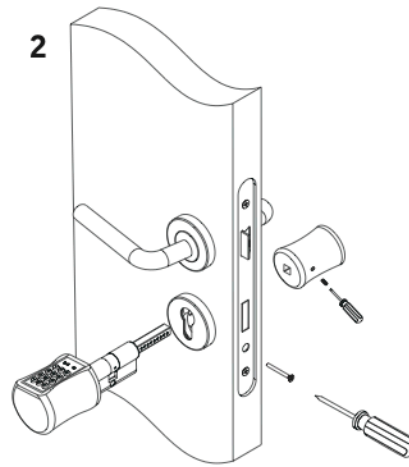
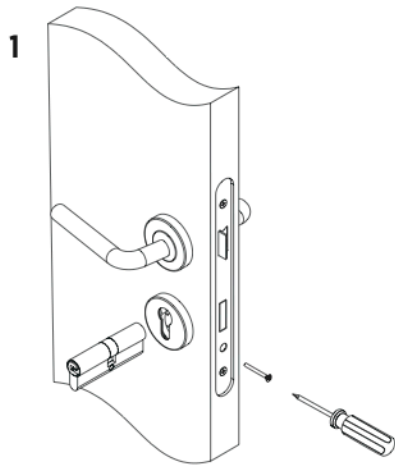
sd1.47mm

Magnetic
Emergency Key

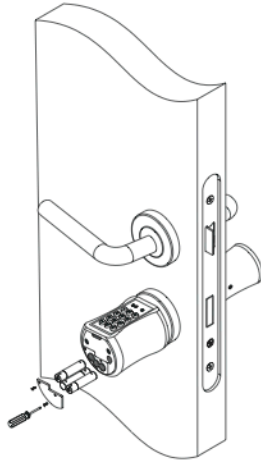
iC Card



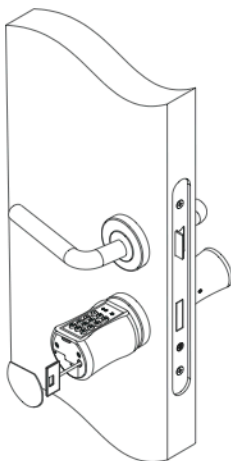
instalación



**cambia
las
baterías**



**usando
llave
magnética**



iCylinder 05®

CONFIGURATION

A) Overview of the password:

There are total of 30 sets of passwords. The first group is the administrative password. The rest are ordinary passwords. The password is 6-12 digits in length. Add garbled characters before and after opening the door. The total length of the password is up to 30 digits.

B) Card overview:

Up to 200 IC cards can be registered. All cards are user cards. Do not have any administrative rights.

C) Management password registration and modification:

Initial state. Press any key on the keyboard once. After lighting the keyboard light, Press **↵** first. Then Press **↵** again. Enter the initial password 123456 and press **↵** to confirm, you can enter the management password registration status. Enter the administrator password (6-12 digits) Press **↵** to confirm and enter the administrator password again (6-12 digits) and press **↵** to confirm. The keyboard light is off. The management password was successfully registered.

.Press any key on the keyboard once. After lighting the keyboard light. Press **↵** first Then Press **↵** again, Enter the management password, press **↵** to confirm and press the No:7 button. The keyboard light flashes 3 times. Enter the new administrative password to press **↵** Please enter the new administrator password again press **↵** confirm Successfully modified

D) Set User Password:

Press any key on the keyboard once. After lighting the keyboard light Press **↵** first, then press **↵** again. Enter the management password, press **↵** to confirm and press the No:1 button. The keyboard light flashes 3 times. Enter the user password and press **↵** to confirm. Enter the user password again and press **↵** to confirm. The setting is successful.

E) The user password is deleted:

Press any key on the keyboard once. After lighting the keyboard light, Press **↵** first, then press **↵** again. Enter the management password, press **↵** to confirm and press the No:2 button. The keyboard light flashes 3 times. Enter the user password you want to delete by pressing **↵** confirm. The password was deleted successfully.

F) IC card registration:

Press any key on the keyboard once. After lighting the keyboard light Press **↵** first, then press **↵** again. Enter the management password, press **↵** to confirm and press the No:3 button. The keyboard light flashes 3 times. Brush the IC card. Registration was successful. It can be registered continuously until it is full. Or press **↵** withdraws.

G) IC card deletion:

Press any key on the keyboard once. After lighting the keyboard light Press **↵** first, then press **↵** again. Enter the management password, press **↵** to confirm and press the No:4 button. The keyboard light flashes 3 times. At this point, brush the card you want to delete. This IC card can be deleted.

H) IC card empty:

Press any key on the keyboard once. After lighting the keyboard light Press **↵** first, then press **↵** again. Enter the management password, press **↵** to confirm and press the No:5 button. The keyboard light flashes 3 times. Now press **↵** to Confirm. All IC cards can be deleted.

I) Empty system:

Press any key on the keyboard once. After lighting the keyboard light Press **↵** first, then press **↵** again. Enter the management password, press **↵** to confirm and press the No:6 button. The keyboard light flashes 3 times. Press **↵** again confirms. Clear all passwords and IC cards. Restore the initial state. The initial password is 123456.

J) Set the lock delay time:

Press any key on the keyboard once. After lighting the keyboard light Press **↵** first, then press **↵** again. Enter the management password, press **↵** to confirm and press the No:8 button. The keyboard light flashes 3 times. Enter a single number from 0-9. You can set the unlock time to extend. The extension time is the input number + 5 seconds. For example: press 3 is for 8 seconds.

K) Open the door operation:

Press any key on the keyboard once. After lighting the keyboard light. Enter the unlock password to press **↵** confirm. Verification passed. The blue light is on. The door is unlocked. After the opening time, the blue light is off. The door lock is closed. Press any key on the keyboard once. After lighting the keyboard light. Swipe the card. The verification passes and the blue light are on. The door is unlocked. After the opening time, the blue light is off. The door lock is closed.

L) low battery alarm:

Voice prompt below 3.6v: Please replace the battery if the battery is low.

M) Enter the error lock:



Enter the password incorrectly 3 times in a row. The system cannot be operated for 3 minutes.

N) The button is off






After pressing the button, the light is on for ten seconds without operation and automatically exits the operating system > The light is off

Press the back button. Exit system > The light is off.

D) Normally open mode:

Press any key on the keyboard once. After lighting the keyboard light. Enter the unlock password to press  confirm. After the verification is passed, press the button three times  to enter the normally open state. Press any key to exit to enter normal open state.

E) The user password is deleted:

Press any key on the keyboard once. After lighting the keyboard light,  , Press  first, then press  again. Enter the management password, press  to confirm and press the No:2 button. The keyboard light flashes 3 times. Enter the user password you want to delete by pressing  confirm. The password was deleted successfully.

F) Low battery alarm:

When the battery is below 3.6V, three "beep" sounds when turned on. The battery must be replaced in time.

iCylinder 05®

FR

Facile à installer, ne nécessite aucun perçage, aucun filage et aucun travail de menuiserie. Déverrouillage par appareil mobile, par code PIN, carte RFID ou interrupteur d'urgence mécanique. Une solution orientée sur Airbnb et les maisons de vacances. Système Wi-Fi avec passerelle et application permettant de générer des clés à distance et de les envoyer partout dans le monde.



dans la boîte

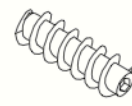
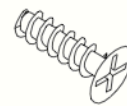
iCylinder 05 - 1
Sac à outils - 1
Manuel - 1

des outils

psm9.6x2.8mm - 1
psm7.7x1.8mm - 2
sd1.47mm - 1
Clé magnétique d'urgence - 2
iC Card - 2

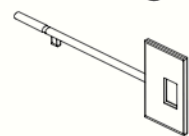
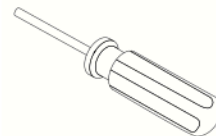
psm9.6x2.8mm

psm7.7x1.8mm



sd1.47mm

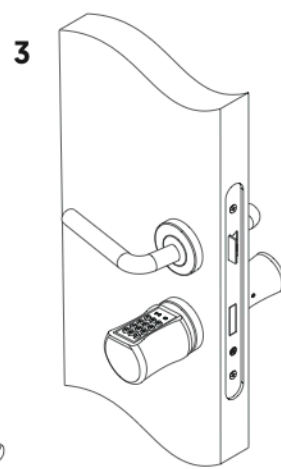
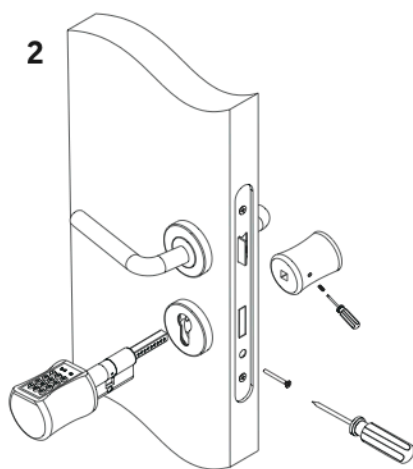
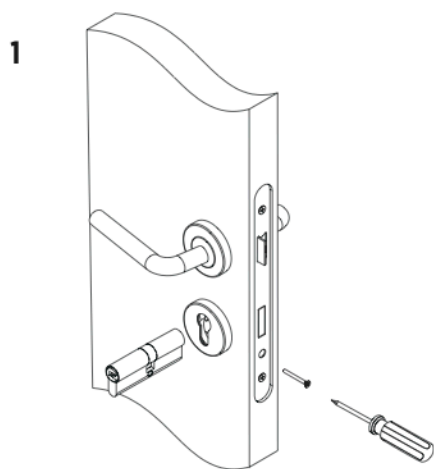
Clé magnétique d'urgence



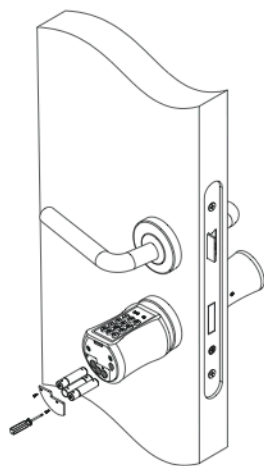
iC Card



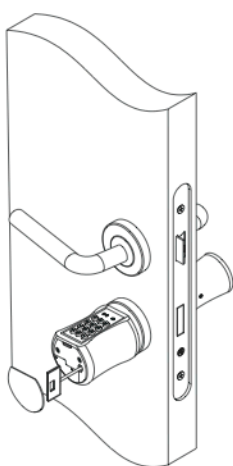
L'installation



**changer
pilles**



**utiliser clé
magnétique**



iCylinder 05®

CONFIGURATION

A) Overview of the password:

There are total of 30 sets of passwords. The first group is the administrative password. The rest are ordinary passwords. The password is 6-12 digits in length. Add garbled characters before and after opening the door. The total length of the password is up to 30 digits.

B) Card overview:

Up to 200 IC cards can be registered. All cards are user cards. Do not have any administrative rights.

C) Management password registration and modification:

Initial state. Press any key on the keyboard once. After lighting the keyboard light, Press **↵** first. Then Press **↵** again. Enter the initial password 123456 and press **↵** to confirm, you can enter the management password registration status. Enter the administrator password (6-12 digits) Press **↵** to confirm and enter the administrator password again (6-12 digits) and press **↵** to confirm. The keyboard light is off. The management password was successfully registered.

.Press any key on the keyboard once. After lighting the keyboard light. Press **↵** first Then Press **↵** again, Enter the management password, press **↵** to confirm and press the No:7 button. The keyboard light flashes 3 times. Enter the new administrative password to press **↵** Please enter the new administrator password again press **↵** confirm Successfully modified

D) Set User Password:

Press any key on the keyboard once. After lighting the keyboard light Press **↵** first, then press **↵** again. Enter the management password, press **↵** to confirm and press the No:1 button. The keyboard light flashes 3 times. Enter the user password and press **↵** to confirm. Enter the user password again and press **↵** to confirm. The setting is successful.

E) The user password is deleted:

Press any key on the keyboard once. After lighting the keyboard light, Press **↵** first, then press **↵** again. Enter the management password, press **↵** to confirm and press the No:2 button. The keyboard light flashes 3 times. Enter the user password you want to delete by pressing **↵** confirm. The password was deleted successfully.

F) IC card registration:

Press any key on the keyboard once. After lighting the keyboard light Press **↵** first, then press **↵** again. Enter the management password, press **↵** to confirm and press the No:3 button. The keyboard light flashes 3 times. Brush the IC card. Registration was successful. It can be registered continuously until it is full. Or press **↵** withdraws.

G) IC card deletion:

Press any key on the keyboard once. After lighting the keyboard light Press **↵** first, then press **↵** again. Enter the management password, press **↵** to confirm and press the No:4 button. The keyboard light flashes 3 times. At this point, brush the card you want to delete. This IC card can be deleted.

H) IC card empty:

Press any key on the keyboard once. After lighting the keyboard light Press **↵** first, then press **↵** again. Enter the management password, press **↵** to confirm and press the No:5 button. The keyboard light flashes 3 times. Now press **↵** to Confirm. All IC cards can be deleted.

I) Empty system:

Press any key on the keyboard once. After lighting the keyboard light Press **↵** first, then press **↵** again. Enter the management password, press **↵** to confirm and press the No:6 button. The keyboard light flashes 3 times. Press **↵** again confirms. Clear all passwords and IC cards. Restore the initial state. The initial password is 123456.

J) Set the lock delay time:

Press any key on the keyboard once. After lighting the keyboard light Press **↵** first, then press **↵** again. Enter the management password, press **↵** to confirm and press the No:8 button. The keyboard light flashes 3 times. Enter a single number from 0-9. You can set the unlock time to extend. The extension time is the input number + 5 seconds. For example: press 3 is for 8 seconds.

K) Open the door operation:

Press any key on the keyboard once. After lighting the keyboard light. Enter the unlock password to press **↵** confirm. Verification passed. The blue light is on. The door is unlocked. After the opening time, the blue light is off. The door lock is closed. Press any key on the keyboard once. After lighting the keyboard light. Swipe the card. The verification passes and the blue light are on. The door is unlocked. After the opening time, the blue light is off. The door lock is closed.

L) low battery alarm:

Voice prompt below 3.6v: Please replace the battery if the battery is low.

M) Enter the error lock:



Enter the password incorrectly 3 times in a row. The system cannot be operated for 3 minutes.

N) The button is off






After pressing the button, the light is on for ten seconds without operation and automatically exits the operating system > The light is off

Press the back button. Exit system > The light is off.

D) Normally open mode:

Press any key on the keyboard once. After lighting the keyboard light. Enter the unlock password to press  confirm. After the verification is passed, press the button three times  to enter the normally open state. Press any key to exit to enter normal open state.

E) The user password is deleted:

Press any key on the keyboard once. After lighting the keyboard light,  , Press  first, then press  again. Enter the management password, press  to confirm and press the No:2 button. The keyboard light flashes 3 times. Enter the user password you want to delete by pressing  confirm. The password was deleted successfully.

F) Low battery alarm:

When the battery is below 3.6V, three "beep" sounds when turned on. The battery must be replaced in time.



TDS

CONTACT INFORMATION

Phone: +1 561 389 6106

E-mail: sales@tdsamERICAN.com

www.tdsamERICAN.com