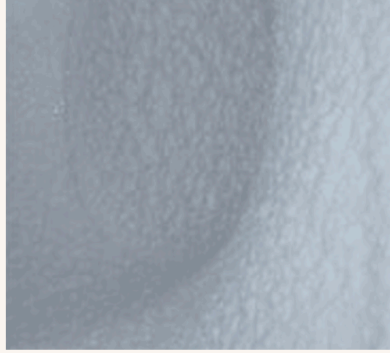


Sorbent Toilet Tissue Lifecycle



1. Timber

We begin with one of the world's most renewable resources: wood. Sorbent toilet paper only uses 100% responsible, non-controversial forestry where pulp logs are grown in plantations. Our pulp logs are sourced from well-managed forests that are certified to protect present and future generations of forests. Our FSC® certification means Sorbent uses well managed forests and controlled sources for pulp.



2. Pulp

A mixture of local and imported pulp, made from softwood (NZ pine) and hardwood (Eucalyptus) trees, is used in making Sorbent toilet tissue. The pulp mixture is then spread across a long continuous fabric to make a sheet of paper. The sheet then passes through a number of stages to extract water and dry the tissue.



3. Steam

Local clean, steam is collected from a geothermal bore and travels along pipes to the Kawerau mill. This eliminates the need for gas fired boilers. The geothermal bore is owned and operated by the local Maori iwi.



4. Paper

The large tissue paper rolls, called 'mother reels', are made locally in Kawerau. By of Plenty, Sorbent mother reels can weigh up to three tonnes each, similar to the weight of three cars. At Kawerau we use a process called 'mother reel' where the paper is made from a mixture of local, naturally occurring geothermal steam brought to the renewable energy over the entire life cycle of Sorbent toilet paper to approx. 73%. We are the only tissue paper manufacturer in NZ that make 'mother reels' and that's a big part of what makes Sorbent toilet paper so special.



5. Finished Product

Tissue paper from the mother reels are layered together, embossed and wound onto recycled cardboard cores to create Sorbent toilet roll "logs". The "logs" are cut into toilet roll lengths for thick & large and long rolls. At Kawerau we use a process called 'mother reel' where the paper is made from a mixture of local, naturally occurring geothermal steam brought to the renewable energy over the entire life cycle of Sorbent toilet paper to approx. 73%. We are the only tissue paper manufacturer in NZ that make 'mother reels' and that's a big part of what makes Sorbent toilet paper so special.



6. Use & Disposal

When disposed of appropriately, Sorbent toilet tissue is dispersible, biodegradable and suitable for all waste systems. We're soft and made sustainably. Sorbent's luxurious, 3 ply toilet tissue is not only kind to your important little places, it's kind to our earth too. We encourage you to recycle the cardboard core and soft plastics.