



GE INDUSTRIAL MOTORS
a **WOLONG** company

Product Technical Information

October 24, 2020

Data shown is for the current revision model #. Ensure your nameplate model # matches.

Model Number:	5KS447XAA304D7
Catalog Number:	M9385
Instruction Manual:	GEI-56128
Connection Diagram:	GEM2034E-FIG7
Outline Drawing:	239C6800VW

Accessory Connection Diagrams

Bearing Thermocouple:	None	Heater:	None
RTD:	None	Thermistor:	None
Thermostat:	None	Winding Thermocouple:	None
Bearing RTD:	None		

Table of Contents

Specification	01
Performance Characteristics	02
Outline Drawing	03
Connection Drawing(s)	04
Spare parts	05

Marks:

MODEL NUMBER: 5KS447XAA304D7
Outline Drawing: 239C6800VW
Connection Diagram: GEM2034E-FIG7
Instruction Book: GEI-56128
Design Code: 49BD3014B
Type: KS
Frame: 447T
Phases: 3
Poles: 6
Output Power: 150HP 111KW
RPM: 1190
Voltage: 575
Hertz: 60
Amps - FL: 136.0
Service Factor: 1.15
Alt Service Factor: --

Estimated Weight: 2940 Lbs
Time Rating: CONT
Enclosure: TEFC
Encl Construction: 841
Ambient Max(°C): 40
Alt Ambient Max(°C): --
Insulation Class: H
NEMA Design: B
Nominal Efficiency: 95.8 %
Guaranteed Efficiency: 95.4 %
3/4 Load Efficiency: --
KVA Code: G
Max KVAR: 38.0
Power Factor: 86.0
Bearing - DE: 6318ZC3
Bearing - ODE: 6318ZC3

Enclosure is Totally Enclosed Fan-Cooled

Stamped Nameplate Notes:

IEEE-STD-841-2009
 DE BRG 90BC03JP3, ODE BRG 90BC03JP3
 STAMP NP249A5564P051 AS BELOW:
 MODEL:5KS447XAA304D7 S/N: XXX
 CSA CERTIFIED CSA09.2216219 FOR EX NA IIC 200 C GC
 CL 1 ZONE2 AEX NA IIC 200C;CL 1 DIV2 GRP ABCD 200C
 IN -25C <= AMB <= 40C, 1.0 SF ON SINE-WAVE PWR
 SURF TEMP 200C AT 1.15SF ON SINE-WAVE PWR
 OR 200C VT OR 215C CT OR 200C CHP PWM CONTROL
 ALTERNATE RATING FOR PWM CONTROL 1.0SF 40C AMB
 VT 0-60 HZ, CT 3-60 HZ, CHP 60-90 HZ.



Additional Information:

6P - T EXTN
PAINTED FRAME ID & SHAFT,
FAN COVER INSIDE & ODE E/S OUTSIDE
C/BOX 700 CU IN - 3.00" NPT
INPRO SEAL BOTH ENDS
OIL RESISTANT SLEEVING ON LEADS
.0015" TIR SHAFT RUNOUT
ROUTINE TEST REPORT AND 5 POINT VIBRATION TEST
REPORT INCLUDED IN C/B
COPPER WASHER UNDER HEADS OF BEARING CAP BOLTS,
APPLY TITE-SEAL (A50CD427A) ON BEARING CAP SCREWS,
RABBETS AND PLUG THREADS.
GROUND PAD
F1 MOUNTING



Performance Characteristics

1st Winding 1st Connection

Design: 49BD3014B

Marks:

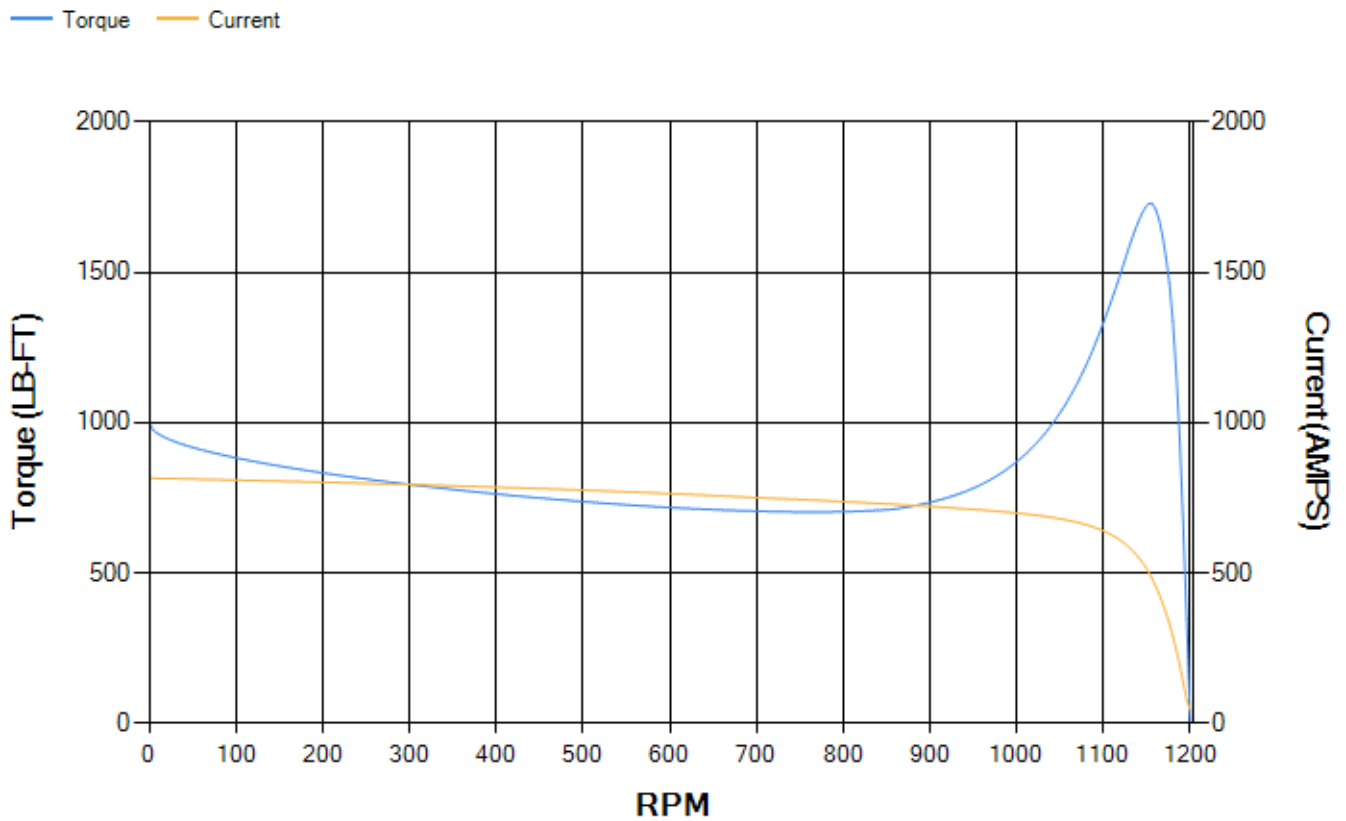
LOAD %	125.0	115.0	100.0	75.0	50.0	25.0	0.0
% EFF	95.12	95.35	95.84	95.91	95.68	93.66	0.00
% PF	86.56	86.48	85.94	83.29	76	55.45	3.82
AMPS	170.52	156.63	136.36	105.45	77.23	54.06	42.35

TORQ(FL)#FT	660.77	TORQ(LR)%FL	150.88	TORQ(BD)%FL	261.64
AMPS(LR)	815.26	PF AT START	0.27		

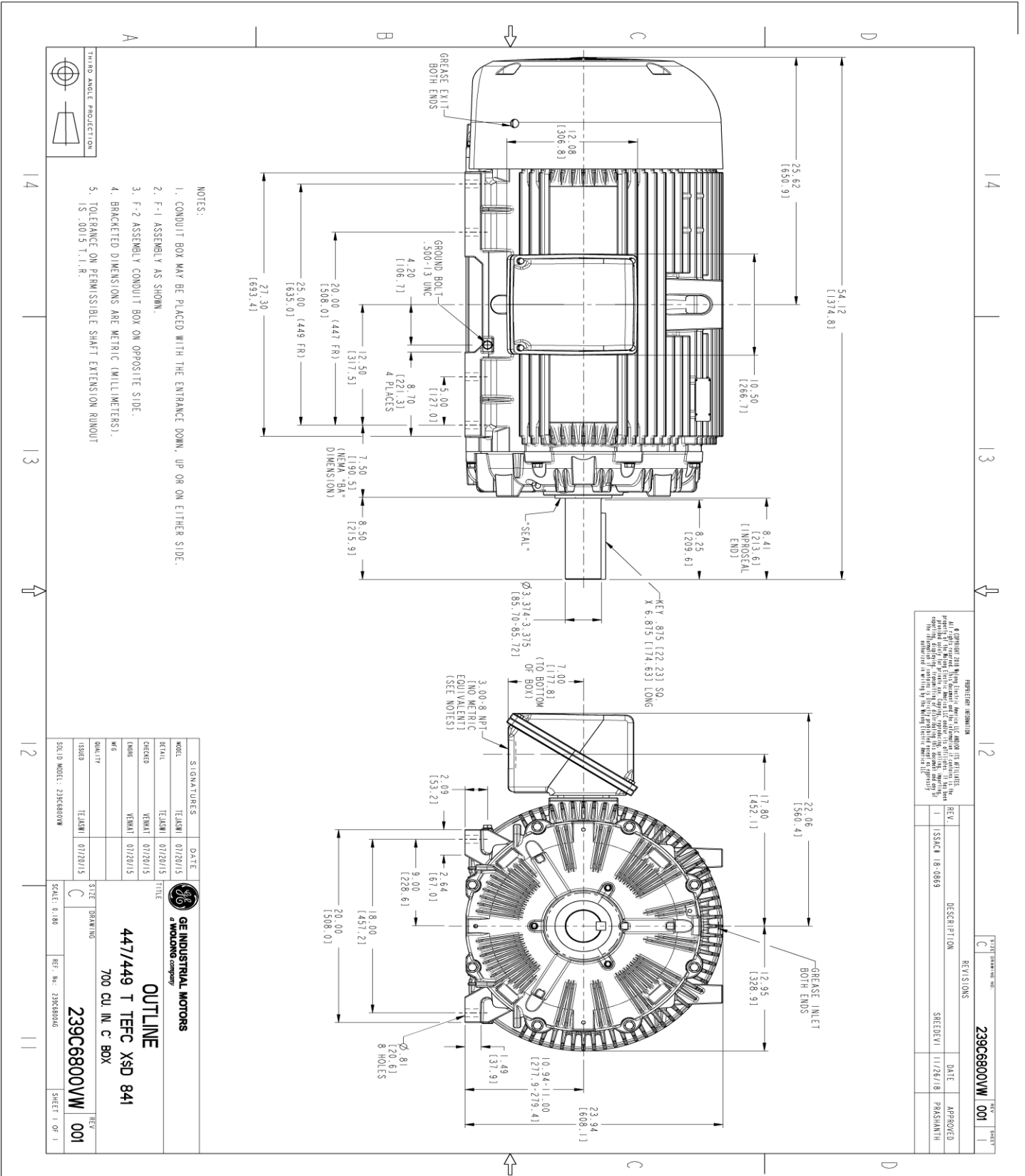
This motor is capable of two cold or one hot start with a maximum connected load inertia of 15238 Lb-Ft Sq (641.52 Kg-meter Sq)at 100% voltage, where the load torque varies with the square of the speed. Acceleration time with maximum inertia and the above load type is 95 seconds. Safe stall time at 100% voltage is 173 seconds cold, 114 seconds hot. Rotor inertia is 175.39 Lb-Ft Sq (7.38 Kg-meter Sq).

Open Circuit A-C:	1.242	Short Circuit D-C:	0.034
Short Circuit A-C:	0.059	X/R Ratio:	12.813
Stator Slots:	72	Rotor Slots:	58

Speed Torque Current Curve (First Connection, First Speed)



Marks:



- NOTES:
- CONDUIT BOX MAY BE PLACED WITH THE ENTRANCE DOWN, UP OR ON EITHER SIDE.
 - F-1 ASSEMBLY AS SHOWN.
 - F-2 ASSEMBLY CONDUIT BOX ON OPPOSITE SIDE.
 - BRACKETED DIMENSIONS ARE METRIC (MILLIMETERS).
 - TOLERANCE ON PERMISSIBLE SHAFT EXTENSION RUNOUT IS .0015 T.1.R.

REVISION INFORMATION

REV.	DESCRIPTION	DATE	APPROVED
1	ISSUE 18-0869	11/26/18	PARSHANTH

239C6800VW 001

SIGNATURES	DATE
DESIGNER: TEJASNI	01/22/15
CHECKED: TEJASNI	01/20/15
DESIGNED: VEENAT	01/20/15
QUALITY: TEJASNI	01/20/15

GE INDUSTRIAL MOTORS
A WOLSKONG COMPANY

OUTLINE
447/449 T TEFC XSD 841
700 CU. IN. C BOX

239C6800VW 001

SCALE: 0.180 REF. NO: 239C68006 SHEET 1 OF 1

Marks:

Connection Diagram
GEM2034E-FIG7



End shield Assembly		
Part Description	DE Side Part#	ODE Side Part#
End Shield	115E4355AA1	115E4355LM1
Bearing	235A2514AG01	235A2514AG01
Slinger/Inproseal	235A4575GS5	235A4575GS5

Fan & Fan Cover Assembly	
Part Description	Part#
Fan	159C7100G03
Fan Cover	128D6841AA1

Conduit & Accessories Box Assembly	
Part Description	Part#
Conduit Box	118D4408AD2

Mechanical Accessories	
Part Description	Part#
Brake	
Tachometer	

