

Product Information Packet

May 26, 2017

Data shown is for the current revision model #. Ensure your nameplate model # matches.

Model Number:	5KAF404SAA324A
Catalog Number:	M9333
Instruction Manual:	GEI-56128
Connection Diagram:	GEM2034E-FIG3
Outline Drawing:	239C7400AA

Accessory Connection Diagrams			
Bearing Thermocouple:	None	Heater:	None
RTD:	None	Thermistor:	None
Thermostat:	3027JE-2A	Winding Thermocouple:	None
Bearing RTD:	None		

Table of Contents	
Specification	01
Performance Characteristics	02
Outline Drawing	03
Connection Drawing(s)	04

Marks:

MODEL NUMBER:	5KAF404SAA324A		
Outline Drawing:	239C7400AA	Service Factor:	1.15
Connection Diagram:	GEM2034E-FIG3	Alt Service Factor:	--
Instruction Book:	GEI-56128	ASD Type:	PWM
Design Code:	40BD3054A	Time Rating:	CONT
Type:	KAF	Enclosure:	TEBV
Frame:	404T	Encl Construction:	A\$D
Phases:	3	Ambient Max (°C):	40
Poles:	6	Alt Ambient Max(°C):	--
Output Power:	60HP 44.4KW	Insulation Class:	H
Output Power (2):	60HP 44.4KW	NEMA Design:	-
Output Power (3):	0HP 0KW	Nominal Efficiency:	94.5 %
RPM:	1781	Guaranteed Efficiency:	93.6 %
RPM (2):	1190	3/4 Load Efficiency:	94.9 %
RPM (3):	0	KVA Code:	G
Voltage:	230/460	Max KVAR:	21.4
Voltage (2):	230/460	Power Factor:	82.5
Voltage (3):	6.5/13	Service Factor SINE:	1.15
Hertz:	90	Service Factor ASD:	1
Hertz – 2:	60	Min Supply Wires:	75 C
Hertz – 3:	0.5	IP:	55
Amps – FL:	136.4/68.2	Vibration Limit:	0.04 mm/s
Amps – FL- 2:	144.0/72.0	Bearing Lubrication:	NULL
Amps - FL- 3:	144.0/72.0	Bearing - DE:	6316ZC3
Speed Range RPM:	1-1190	Bearing - ODE:	6316ZC3
Const HP RPM:	1190-1781	Estimated Weight:	1360 Lbs

Totally Enclosed Blower-Ventilated**Stamped Nameplate Notes:**

ALTERNATE RATING FOR PWM CONTROL: 1.0SF 40C AMB
 INVERTER DUTY CONSTANT TORQUE RANGE: 0-60HZ
 THERMOSTAT LEADS TB1-TB2 TRIP
 IP 55
 CLASS H INS WITH CLASS F RISE AT 1.00SF,
 INVERTER DUTY PER NEMA MG1 PART 31
 WITH PWM CONTROL

Additional Information:

6P - T EXTN
 C/BOX 700 CU IN - 3.00" NPT
 E/S GROUND BOLT MTD ON DE C/BOX SIDE NEAR FOOT
 OIL RESISTANT SLEEVING ON LEADS
 TACH PROVISION MOTOR

N.C. TRIP TSTAT LDS TO MAIN CONDUIT BOX
F1 MOUNTING
BLOWER MOTOR 208-230/460V, 1.7-2.0/1.0AMPS, 0.5HP
BLOWER MOTOR 60/50HZ, RPM 1725/1426
PAINTED ODE ACCESSORY RABBET
SHAFT GROUNDING RING MOUNTED ON DE BRG CAP

Performance Characteristics

1st Winding 1st Connection

Design: 40BD3054A

Marks:

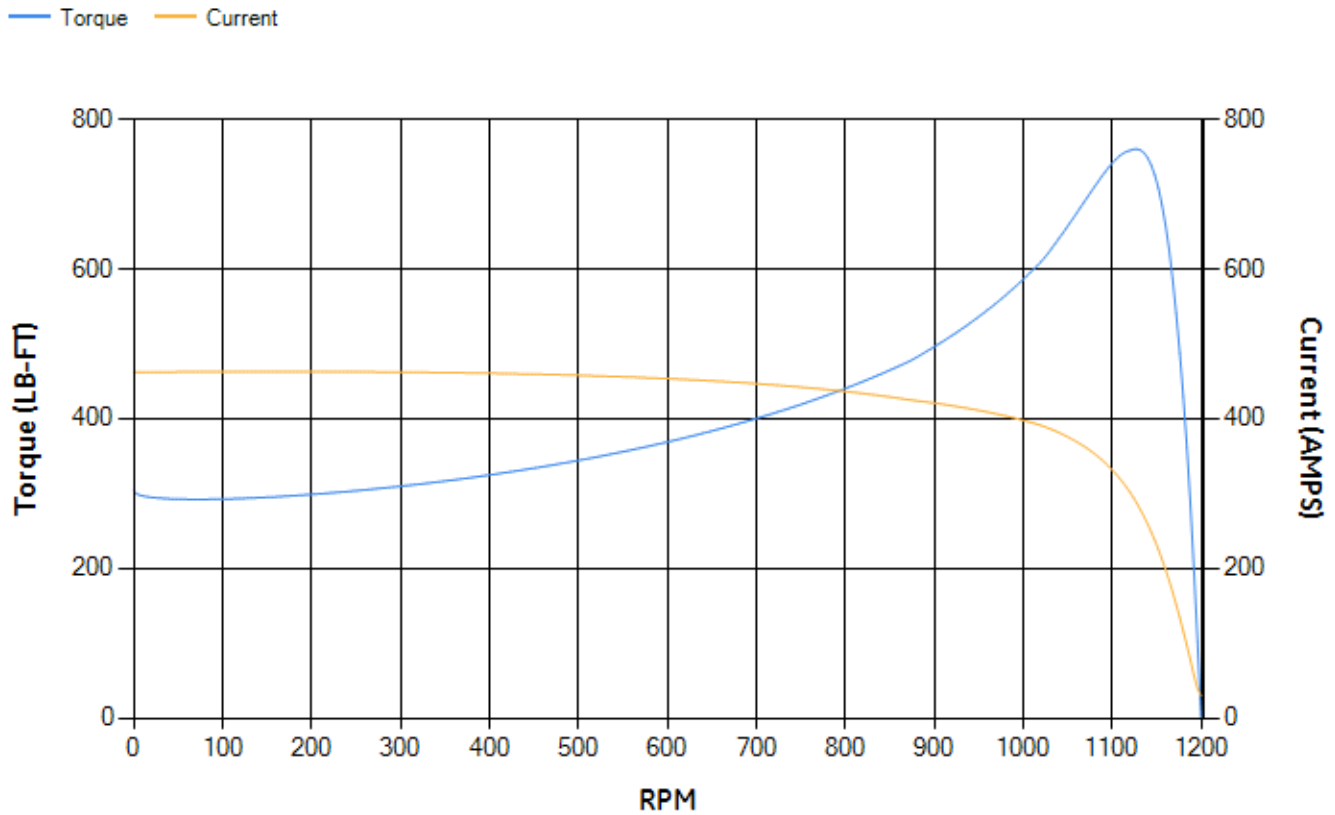
LOAD %	125.0	115.0	100.0	75.0	50.0	25.0	0.0
% EFF	93.59	93.92	94.56	94.86	94.8	92.75	0.00
% PF	84.95	84.29	82.74	77.84	67.21	44.2	2.81
AMPS	88.3	81.57	71.62	57.04	44.07	34.25	29.79

TORQ(FL)#FT	265.08	TORQ(LR)%FL	114.65	TORQ(BD)%FL	285.55
AMPS(LR)	462.05	PF AT START	0.32		

This motor is capable of two cold or one hot start with a maximum connected load inertia of 2881 Lb-Ft Sq (121.29 Kg-meter Sq)at 100% voltage, where the load torque varies with the square of the speed. Acceleration time with maximum inertia and the above load type is 35 seconds. Safe stall time at 100% voltage is 86 seconds cold, 51 seconds hot. Rotor inertia is 22.62 Lb-Ft Sq (0.95 Kg-meter Sq).

Open Circuit A-C:	0.624	Short Circuit D-C:	0.015
Short Circuit A-C:	0.035	X/R Ratio:	5.726
Stator Slots:	72	Rotor Slots:	58

Speed Torque Current Curve (First Connection, First Speed)

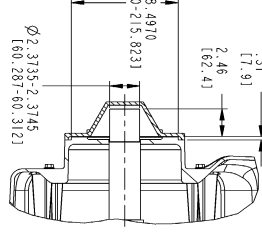
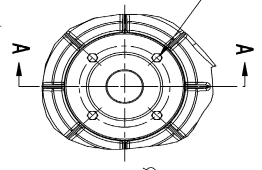


NAME:501291659 OBJECT:239C7400AA DATE:16-Apr-08 21:20:19

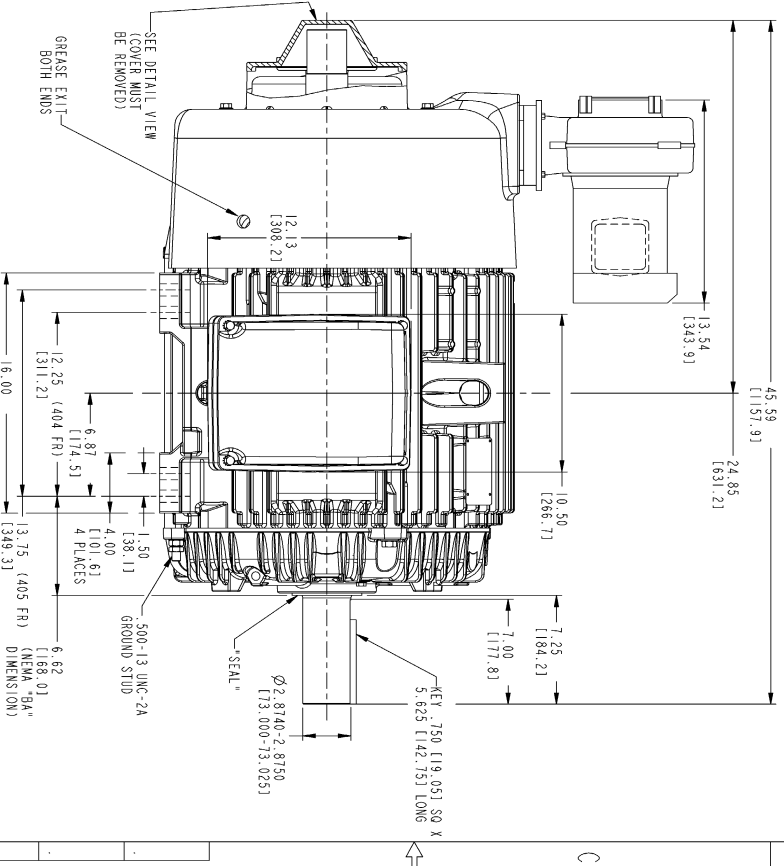
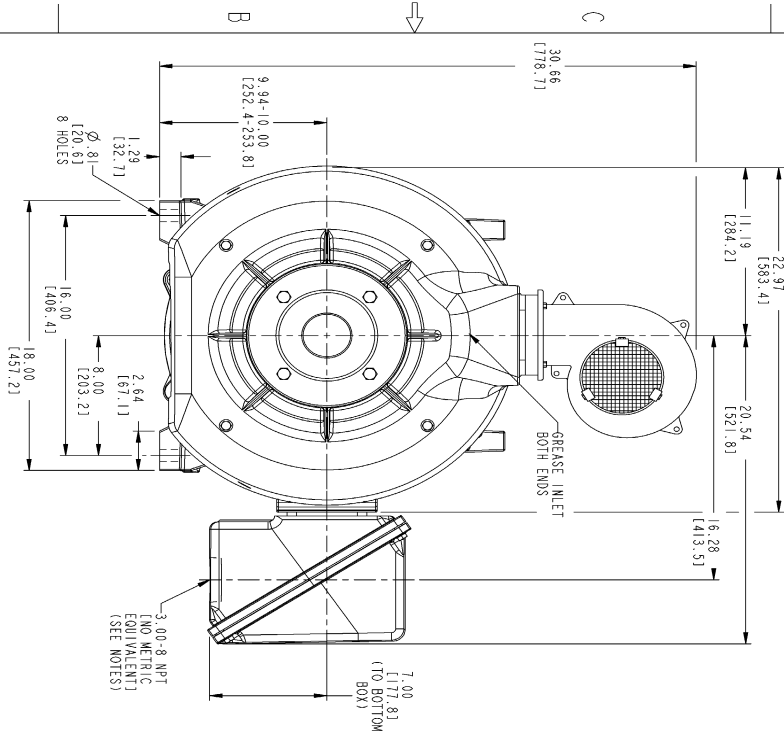
Marks:

.500-13 UNC-2B C.S.I.M.K.
 80°-120° .500-.530 X
 MIN FULL THREAD (.44)
 TOLER. EV. ±.014
 Ø 1.250 (1.04-1.13) B.C.

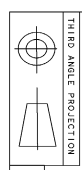
DETAIL VIEW



SECTION A-A



- NOTES:
1. CONDUIT BOX MAY BE PLACED WITH THE ENTRANCE DOWN, UP OR ON EITHER SIDE.
 2. F-1 ASSEMBLY AS SHOWN.
 3. F-2 ASSEMBLY CONDUIT BOX ON OPPOSITE SIDE.
 4. BRACKETED DIMENSIONS ARE METRIC (MILLIMETERS).



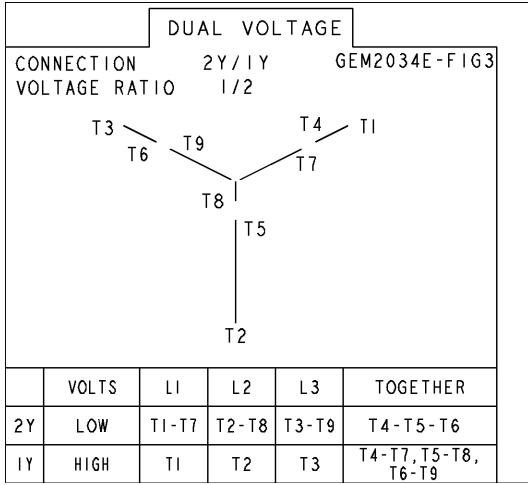
Part must conform to SI 900000
 Sect. 4, Toxicity Procedure

REV.	DESCRIPTION	DATE	APPROVED

SIGNATURES		DATE	
DESIGNED	SKETCHED	DATE	DATE
GE Consumer & Industrial			
GENERAL ELECTRIC COMPANY			
TITLE		SCALE: 0.25X	
OUTLINE 404/405 T TEBC ASD 700 CU IN CBX. PROV. FOR TACH. BLOWER KIT		SHEET 1 OF 1	
ISSUED		REF. NO.	
DISTRIBUTION: MMP			

Marks:

Connection Diagram
GEM2034E-FIG3



Thermostat Connection
3027JE-2A

