


Technical Documentation

# **FD0/54**

## **Farm Duty | BEGCFD**

Date: April 16, 2021

	
	Date: April 16, 2021

### Technical Data Sheet

Motor Type: BEGCFD	Catalogue No: FD0/54
--------------------	----------------------

#### Nameplate Information

HP	Pole	RPM	Frame	Voltage	Hz	Phase
0.50	4	1755	56	115 / 230	60	1
Enclosure	Ins. Class	Service Factor	Time Rating	NEMA Design	Rated Amb.	Rated Altitude
TEFC	F	1.15	Continuous		-40 to 40 °C	<1000 m

#### Typical Performance

Efficiency (%)				Power Factor (%)		
Full Load		3/4 Load	1/2 Load	Full Load	3/4 Load	1/2 Load
Nom.	Min.					
58.00				58.00		
Torque				Current (A)		
Full Load (lb-ft)	Locked Rotor (% FLT)	Pull Up (% FLT)	Break Down (% FLT)	No Load	Full Load	Locked Rotor
0.20	450		350		9.4 / 4.7	53.00 / 26.50
NEMA KVA Code	Inertia (WR <sup>2</sup> )			Safe Stall Time (s)		Noise Level Sound Press. dB(A)
	Rotor (lb-ft <sup>2</sup> )	NEMA Load (lb-ft <sup>2</sup> )	Max. Allowable (lb-ft <sup>2</sup> )	Cold	Hot	
	0.083					

#### VFD Duty Information

Speed Range			VFD		S.F.
Constant Torque	Variable Torque	Constant Power	Carrier	Type	
			0		

#### Hazardous Locations Information

Temp Code (Sinewave / VFD)	/
----------------------------	---

#### Additional Certifications

Other Certification
---------------------

#### Additional Information

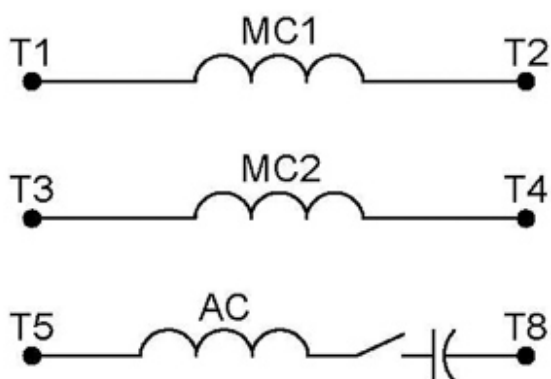
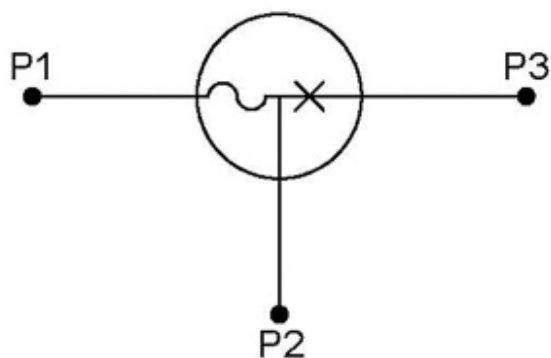
Bearings		Approx. Weight
DE	NDE	lbs
6205ZZ	6203ZZ	35

**Nameplate Drawing**

# Farm Duty

TYPE	BEGCFD	CAT. NO.	FD0/54		
OUTPUT	0.50 HP 0.37 kW	FRAME	56	TEFC	
R.P.M.	1755	POLE	4	INS.	F
VOLTS	115 / 230	PHASE	1	Hz	60
AMPS	9.4 / 4.7	CODE		S.F.	1.15
AMBIENT	40 °C	NOM. EFF. 58.00		MIN. EFF.	
BEARINGS	6205ZZ / 6203ZZ			RATING Cont.	
SER. NO.	TBD	DESIGN		WT. 35 LBS	
PWM VFD DUTY	VT	CT	CP	S.F.	

**Connection Diagram**



9 LEAD DUAL VOLTAGE		CAPACITOR START		
VOLTAGE	ROTATION	L1	L2	JOIN
HIGH	CCW	P1	4	2&3&5, P2&8
	CW	P1	4	2&3&8, P2&5
LOW	CCW	P1	2,4,5	P2,3,8
	CW	P1	2,4,8	P2,3,5

WD\_9CS