



Spring 2022

WOMEN
GIRLS
MEN



TROPICAL DREAMS...

A desire to connect with nature and escape the modern world for a more romantic era. A return to reassuring, endearing values. Streamline our closets and design with a focus on well-being and indulgence. Less is more, wellness is the center of everything we do.

Fabrics have utility and function. Fibers that absorb sunlight and create healing and generate red light and near infrared light. Promotes healthier skin, joints and muscles and improves performance.

The color palette is Tropical inspired and polarized with neon brights. Orange tinted Reds, bright Yellows, Pink infused shades, and a range of Blues from Seabreeze Turquoise shades to Navy. This is offset by neutral Greys, Whites, and Black. Rugby Stripes, gingham, color blocking, and large geometric floral patterns compliment the bright tones of the season.

Enjoy!

KRISTIN & LORNA



Contents

WOMEN

- jackets & coats _____ 07
- shirts & tops _____ 19
- breeches, jeans & tights _____ 55

GIRLS

- shirts & tops _____ 99
- breeches, jeans & tights _____ 105

MEN

- breeches & jeans _____ 111
- shirts & tops _____ 115



WOMEN

ja&kets coats

CLIMATE JACKET

- **Style #:** 16133
- **Sizes:** XS - XL
- **Color:** White - Sunshine

Fabric: Water repellent Cotton/Poly

Let it rain in this stylish colorful jacket. It sure will brighten your outlook on a rainy day. Streamlined silhouette with a drawcord in back so you can get a turned in look at waist.

Multiple pockets to keep your belongings. Inside striped contrast grosgrain detailing highlights the hood and inside placket. 2 way zipper in front. A longer back with snap gussets for comfort in the saddle as well as snaps on sleeve cuffs finishes this fashionable rain coat.



CLIMATE JACKET

- Style #: 16133
- Sizes: XS - XL
- Color: White - Sunshine



SPORT JACKET

- **Style #:** 16158
- **Sizes:** XS - XL
- **Color:** Black - Seabreeze

Fabric: Water repellent Nylon in front, back & top of sleeves. Nylon/Spandex sides

Perfect jacket for any sport or travel. Front and back are quilted and the side panels and under sleeves are a nylon/spandex knit for super comfortable and flattering fit. Metaluxe 2 way zip front and hidden zip pockets. Nylon Cuffs with zipper vents.

Slightly elongated back for a beautiful fit and a stunning hourglass silhouette.



SPORT JACKET

- Style #: 16158
- Sizes: XS - XL
- Color: Black - Seabreeze



SPORT VEST

- **Style #:** 16157
- **Sizes:** XS - XL
- **Color:** Navy

Fabric: Water repellent Nylon in front and Nylon / Spandex sides.

Perfect vest for any sport or travel. Front and back are quilted and the side panels are a nylon/spandex knit for super comfortable and flattering fit. Metaluxe 2 way zip front. Hidden Zip Pockets on princess seam.

Slightly longer in back for flattering look and a stunning hourglass silhouette.



THE COMPLETE SHOW COAT

- **Style #:** 15008
- **Sizes:** 2 - 16
- **Colors:** Navy - Black

Fabric: Lightweight 4-way stretch Poly/Spandex softshell microfiber with water repellent stay cool, stay dry technology.

Machine Washable.

This versatile show coat takes you from dressage to jumping to eventing, and after your show simply zip in the hoodie and go out to dinner. Comes with 3 interchangeable show zip ins. If one gets dirty at show, zip in another!

In a new modern, sleek, flattering silhouette the coat features reflective zippers and pretty fleur de lis buttons.

A double vented back ensures a perfect fit.



WOMEN

Shirts & Tops

RIDE SWEATER

- **Style #:** 19038
- **Sizes:** XS - XL
- **Colors:** Navy - Pink

Fabric: Lightweight, soft Cotton/
Acrylic blend.

With the word RIDE spelled out over
sleeves and chest, this sweater
makes a statement while still being
soft and snugly.

Pretty "vent" stitch in front and back
for an elegant look. Longer in Back
and absolutely perfect to wear over
any of our tights!



RIDE SWEATER

- Style #: 19038
- Sizes: XS - XL
- Colors: Navy - Pink



GOODE SUN SHIRT

- **Style #:** 18149
- **Sizes:** XS/S - M - L/XL
- **Colors:** Punch - Turquoise - Lilac - Silver

Fabric: Seamless Polyamide/Elastane with UV 50 protection and stay Cool technology.

A seamless, no chafing, super lightweight shirt with SPF 50 protection and cooling properties. Dries superfast and is the ultimate exercise shirt for any sport. In a beautiful silhouette with slight rusching at the waist, mock neck with zipper at front placket and thumbhole grips on sleeve so even your hands are protected from the sun.



FITNESS SHIRT

- **Style #:** 18149
- **Sizes:** XS/S - M - L/XL
- **Colors:** Punch - Turquoise - Lilac - Silver



PERFECT SPORT SHIRT

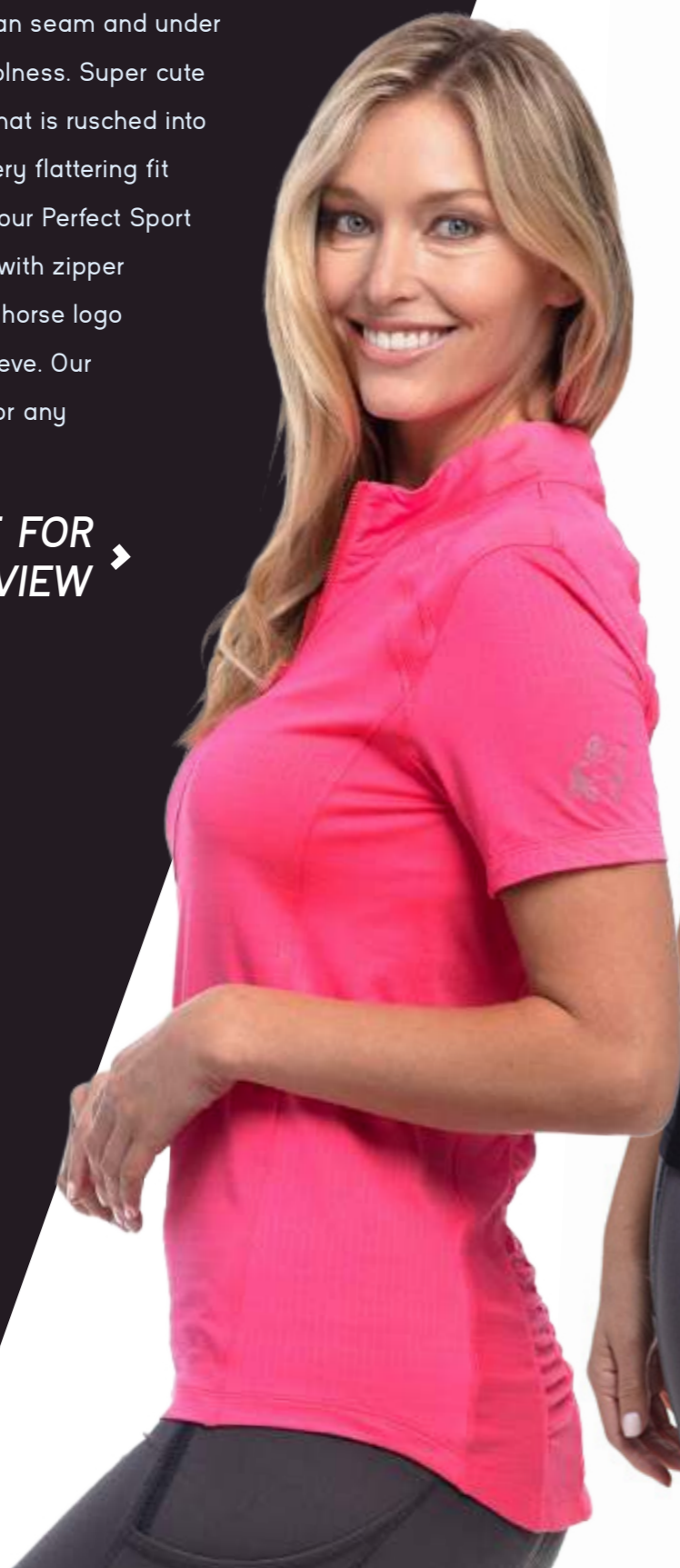
- Style #: 18147 • Sizes: XS - XL
- Colors: Punch - Black Stripe - Navy Link

Fabric: Lightweight Nylon / Spandex.

Moisture wicking and stay cool and dry in this super comfortable and flattering sport shirt.

Mesh fabric at raglan seam and under sleeve for extra coolness. Super cute elastic mesh trim that is rusched into back seam for a very flattering fit that also matches our Perfect Sport Tights. Mock Neck with zipper in front placket. GR horse logo on wearer's left sleeve. Our favorite new shirt for any type of exercise.

**NEXT PAGE FOR
THE BACK VIEW** ▶



PERFECT SPORT SHIRT • Style #: 18147 • Sizes: XS - XL • Colors: Punch - Black Stripe - Navy Link



OUR CLASSIC SHIRT IN NEW PRINTS!

IDEAL SHOW SHIRT

- **Style #:** 18002
- **Sizes:** XS - XL
- **Colors:** Blue Batik - Lilac Tiedye - Black Geo

Fabric: Super soft Bamboo/Cotton/Spandex.
Naturally moisture wicking and anti bacterial.

Mock Neck Zip Front with stripe in zipper teeth. Logo patch on chest and contrast coverstitch throughout shirt.

Vented mesh under armhole for extra breathability.

Great for any sports activity.

**NEXT PAGES FOR
LILAC TIEDYE & BLACK GEO ▶**





IDEAL SHOW SHIRT

- Style #: 18146
- Sizes: XS - XL
- Colors: Blue Batik - Lilac Tiedye - Black Geo

NEXT PAGE FOR BLACK GEO ▶



IDEAL SHOW SHIRT

- **Style #:** 18146
- **Sizes:** XS - XL
- **Colors:** Blue Batik - Lilac Tiedye - Black Geo



LUXE SHOW SHIRT

- **Style #:** 18146
- **Sizes:** XS - XL
- **Colors:** White Jaquard
Black Jaquard
Boho Silver

Fabric: Nylon/Spandex Jaquard with stay cool, stay dry, moisture wicking technology.

This beautiful new show shirt is a for sure favorite. Stunning streamlined silhouette with flattering seaming details.

Comfortable moisture wicking knit fabric with a slight jacquard pattern and mesh under sleeve and back for extra breathability and coolness. Mock neck with a beautiful crystal zipper and a pretty pearl stitch ruffle at front finishes this stunning shirt.

A NEW show stopper for sure!

**NEXT PAGES FOR
BLACK JAQUARD
& BOHO SILVER ▶**



LUXE SHOW SHIRT

- Style #: 18146
- Sizes: XS - XL
- Colors: White Jaquard - Black Jaquard - Boho Silver

NEXT PAGE FOR BOHO SILVER ▶





LUXE SHOW SHIRT

- Style #: 18146
- Sizes: XS - XL
- Colors: White Jaquard - Black Jaquard - Boho Silver



SEAMLESS SPORT TANK

- **Style #:** 18151
- **Sizes:** XS/S - M - L/XL
- **Colors:** Black Stripe - Turquoise Stripe

Fabric: Polyamide/Elastane with stay cool stay dry, moisture wicking technology

This new, technical seamless tank has knitted mesh in front and back at princess seams for extra venting and breathability. Flattering stripes on

sides and pretty seaming lines on back panels for a very pretty hourglass silhouette. Whole middle back is mesh for extra breathability

and comfort. Fabric is cool but a little bit heavier in weight for a hold and mold fitted feeling. Reflective logo embroidery at center back neck.



SEAMLESS SPORT TANK

- **Style #:** 18151
- **Sizes:** XS/S - M - L/XL
- **Colors:** Black Stripe - Turquoise Stripe



FITNESS POLO

- Style #: 18159 • Sizes: XS - XL
- Colors: Turquoise - Silver - Punch

Fabric: Nylon/Spandex Knit with Lumiton Technology Fiber.

This is the latest and greatest in technology. Made from a fiber that absorbs sunlight and turns it into red light and near infrared light.

Promotes healthier skin, reduces inflammation relieves joint pain and arthritis as well as increases endurance and helps muscle fatigue, even reduces fat. 10-15 degrees cooler than other fabrics and SPF 50. Beautiful slightly looser cut Polo with contrast banding at sleeve, collar and placket with reflective horse logos.

**NEXT PAGE FOR
THE BACK VIEW** ▶



PERFECT SPORT SHIRT • Style #: 18159 • Sizes: XS - XL • Colors: Silver - Turquoise - Punch



RELAX SHIRT

- **Style #:** 18053
- **Sizes:** XS - XL
- **Colors:** Seabreeze - Lilac Gingham

Fabric: Super Fine Soft 100% Cotton

Cut loose and oversized for those hot summer days. Fabric is thin enough that it can still tuck into your breeches. Chest Pockets in front and 3 buttons across middle chest avoids gaping. Pretty longer shirt tail hem.

Elbow length cuffed sleeves with tab detail. Pretty whitewashed metal buttons. This shirt is as nice to the barn as a dinner out at night.

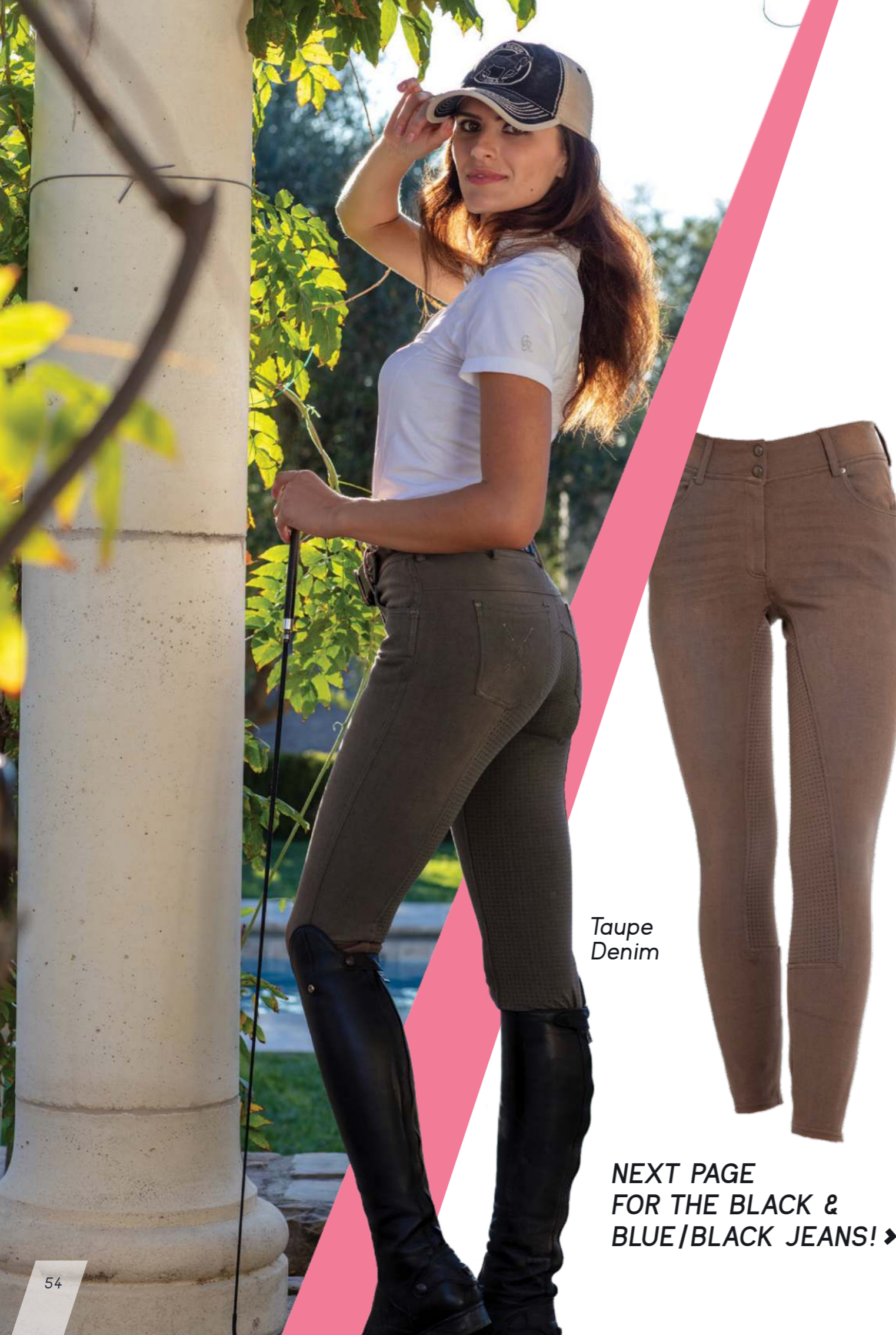
**NEXT PAGES FOR
LILAC GINGHAM ▶**



RELAX SHIRT

- Style #: 18053 • Sizes: XS - XL
- Colors: Seabreeze - Lilac Gingham





WOMEN

breeches jeans & tights

VOGUE JEAN FULL SEAT

- **Style #:** 14902
- **Sizes:** 24R - 36L
- **Colors:** Taupe Denim
Black Denim
Blue/Black Denim

Fabric: Cotton/Poly/Elastane super stretch. Silicone gripper dot Full Seat.

A new composition of specially twisted yarns for incredible stretch and recovery. These jeans are so comfortable you could sleep in them. An incredibly flattering breech in a mid rise fit. Subtle whips and horse shoe embroidery on back pockets and whips embossed on hardware.

A contour stretch waistband and a Silicone gripper dots on Full Seat adds to ultimate comfort in the saddle. Fabric is so stretchy that there is no need for velcro or sock at bottom, these just pull right on! Sure to become your favorite breech.



Taupe
Denim

**NEXT PAGE
FOR THE BLACK &
BLUE/BLACK JEANS! ▶**

VOGUE JEAN FULL SEAT

- Style #: 14902 • Sizes: 24R - 36L
- Colors: Taupe Denim - Black Denim
Blue/Black Denim

Black Denim



Blue/Black Denim





VOGUE JEAN KNEE PATCH

- **Style #:** 14903
- **Sizes:** 24R - 36L
- **Color:** Blue/Black Denim

Fabric: Cotton/Poly/Elastane super stretch. Silicone gripper dots knee patch.

A new composition of specially twisted yarns for incredible stretch and recovery. These jeans are so comfortable you could sleep in them. An incredibly flattering breech in a mid rise fit. Subtle whips and horse shoe embroidery on back pockets and whips embossed on hardware. A contour stretch waistband and a Silicone gripper dots on Knee Patch adds to ultimate comfort in the saddle. Fabric is so stretchy that there is no need for velcro or sock at bottom, these just pull right on! Sure to become your favorite breech.



EQUESTRIAN BOOTCUT JEAN

• Style #: 15000 • Sizes: 24R-40L* • Colors: Vintage Wash - Black Denim

*** NEW EXTENDED SIZE RANGE!**

Fabric: Stretch Cotton/Tencel/Rayon/Poly/Spandex Denim

Our favorite jean breech in a super comfortable stretchy denim. A modified mid rise w/ a contour waistband and 16.5" Bootcut bottom. This Breech features front jean pockets and flattering jean pockets in back w/ an embossed spur design. These will become your favorite pair of jeans. The stretchy denim gives you the ultimate comfort in the saddle. And are great out for dinner after your ride!

Vintage Wash

Black Denim



EQUESTRIAN JEAN FULL SEAT

• Style #: 14901 • Sizes: 24R-40L* • Colors: Vintage Wash - Black Denim

*** NEW EXTENDED SIZE RANGE!**

Fabric: Cotton/Tencel/Rayon/Poly/Spandex denim blend w/stretch ultra full seat

Our favorite jean breech in a super comfortable stretchy denim. A modified mid rise with a custom fit waistband and velcro closures at the bottom. Faux Leather is so stretchy no Velcro is needed at bottom. This Breech features front jean pockets and flattering jean pockets in back w/ an embossed spur design. These will become your favorite pair of jeans. The stretchy denim gives you the ultimate comfort in the saddle.

Vintage Wash

Black Denim



EQUESTRIAN JEAN KNEE PATCH

• Style #: 14900 • Sizes: 24R-40L* • Colors: Black Denim - Vintage Wash *** NEW EXTENDED SIZE RANGE!**

Fabric: 4-Way Stretch Cotton/Tencel/Rayon/Poly/Spandex Denim blend with stretch ultra knee patch.

Our favorite jean breech in a super comfortable stretchy denim. A modified mid rise w/ a custom fit waistband and velcro closures at the bottom. This Breech features front jean pockets and flattering jean pockets in back with an embossed spur design. These will become your favorite pair of jeans. The stretchy denim gives you the ultimate comfort in the saddle.

Vintage Wash



Black Denim



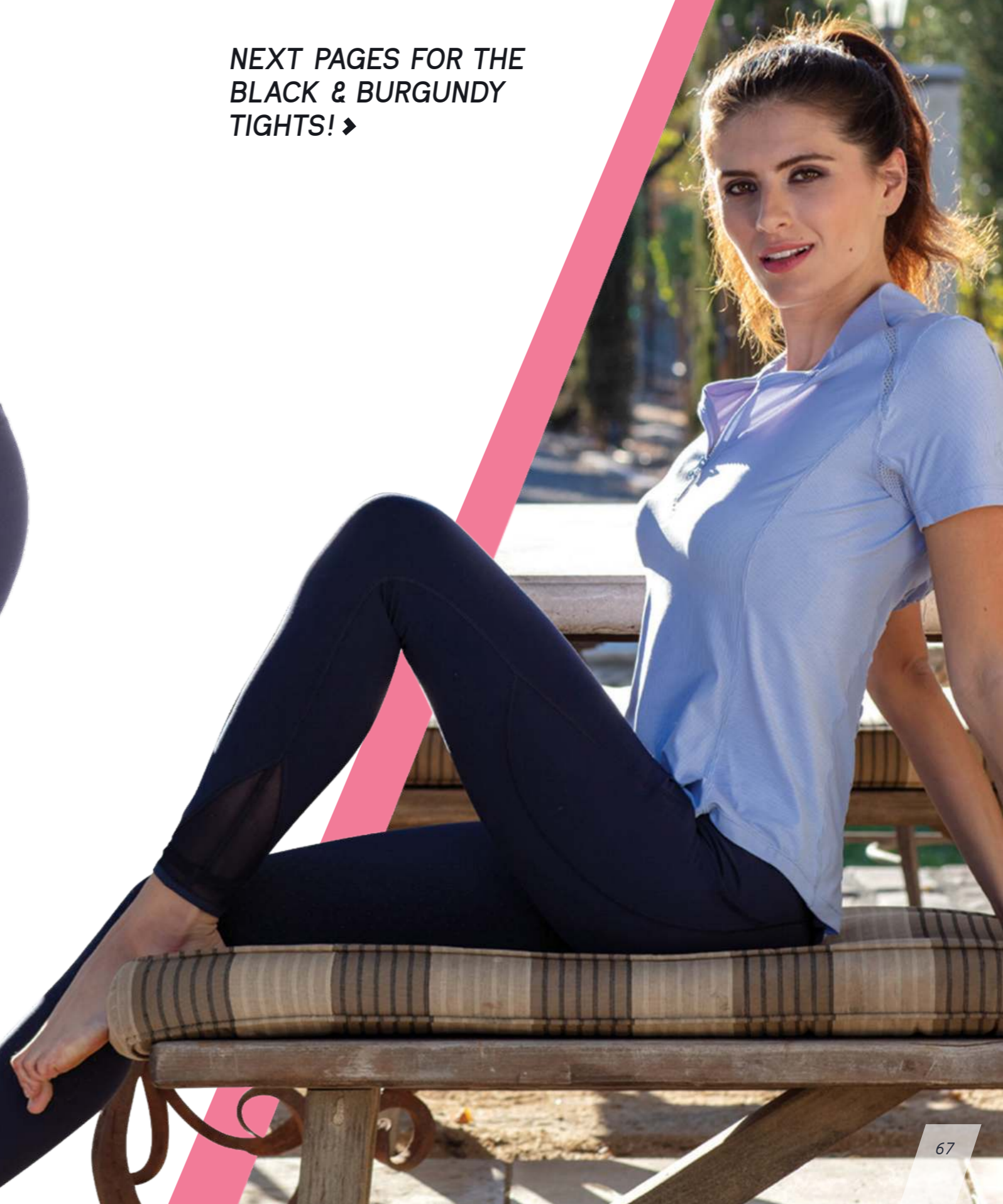
SHAPER TIGHTS

- **Style #:** 13908
- **Sizes:** XS - XL
- **Colors:** Indigo - Black

Fabric: Sensil Innergy fiber Nylon/Spandex. Super-stretch with Silicone Full Seat gripper dots. Anti Cellulite, energising, body sculpting, moisture wicking.

These tights takes you from the saddle to the Yoga Studio to biking or running. Compression fabric with tummy control waistband. Beautifully placed seams for a stunning flattering fit. Back and side pockets to stash your phone and belongings. Silicone on Full Seat for absolute best grip. This is the latest and greatest in innovation and technology. You won't take them off.

**NEXT PAGES FOR THE
BLACK & BURGUNDY
TIGHTS! ▶**



SHAPER TIGHTS - black version

- Style #: 13908
- Sizes: 24R - 36L
- Colors: Indigo - Black



BODYSHAPER CROP TIGHTS

- **Style #:** 13910 • **Sizes:** XS/S - M - L/XL
- **Colors:** Indigo - Black

***Fabric:** Nylon/Spandex seamless crop tights for any sport. Moisture wicking and anti bacterial. Beautiful stitch detailing for a sexy streamlined silhouette.*

Takes you from the saddle to running, biking, hiking or the Yoga Studio. Ribbed fabric for grip. Seamless compression fabric with tummy control waistband. Front inside pocket to stash your belongings while exercising. Ventilated side panels for extra breathability and coolness. These are cropped to eliminate extra bulk under your boots.

Indigo



Black



PERFECT SPORTS TIGHTS

- **Style #:** 13909 • **Sizes:** XS - XL
- **Colors:** Black - Grey Camo - Black Python - Black

Fabric: Nylon/Spandex lightweight Superstretch with Silicone Full Seat gripper dots.

These tights are perfect for any athletics, from the saddle to the Yoga Studio to biking or running. Beautifully placed seams for a stunning flattering fit, with a pretty vented mesh elastic band at side seam. Side pockets to stash your phone and belongings. Silicone on Full Seat for absolute best grip. This is the latest and greatest in innovation and technology. You won't take them off.

Black Python



Grey Camo



PERFECT SPORTS TIGHTS

• **Style #:** 13909 • **Sizes:** XS - XL • **Color:** Grey - Black

Fabric: Nylon/Spandex lightweight Superstretch with Silicone Full Seat Seat gripper dots.

These tights are perfect for any athletics, from the saddle to the Yoga Studio to biking or running. Beautifully placed seams for a stunning flattering fit, with a pretty vented mesh elastic band at side seam. Side pockets to stash your phone and belongings. Silicone on Full Seat for absolute best grip. This is the latest and greatest in innovation and technology. You won't take them off.

Grey

Black



BODYSCULPTING FITNESS TIGHTS

- Style #: 18159 • Sizes: XS/S - M - L/XL
- Colors: Punch - Silver

Fabric: Seamless Polyamide/Elastane with Lumiton Technology Fiber.

This is the latest and greatest in Technology. Made from a fiber that absorbs sunlight and turns it into red light and near infrared light. Promotes healthier skin, reduces inflammation, relieves joint pain and arthritis as well as

increases endurance and helps muscle fatigue, even reduces fat. 10-15 degrees cooler than other fabrics and SPF 50. In a high waist compression tight, flattering seaming details, silicone grip seat and venting mesh on side seam.



ELITE BREECH FS

• **Style #:** 14821 • **Sizes:** 24R - 36L • **Colors:** Black - Plum

Fabric: Nylon/Elasthan

This super flattering higher rise breech is our new favorite breech. The fabric is medium body in weight and cooler feeling yet with incredible hold and mold as well as stretch and recovery. You put it on and feel like you have lost 5 lbs.

Beautifully placed seams for a stunning flattering fit. Front scoop pockets with beautiful subtle crystals around pocket. Pretty bling embroidery on back beltloop.

Sock style bottom for a snug fit under your boots. Patterned Silicone for grip.

Black



Plum





THE POSH JEAN

- **Style #:** 14909
- **Sizes:** 24R - 36L
- **Colors:** Black Cozy Denim - Indigo Cozy Denim

Fabric: Cozy Fiber Denim, a composition of yarns twice as fine as silk and 3 times finer than cashmere for an all in one double textured hybrid denim with incredible soft brushed “fleece like” inside. With thermal insulation and wind protection is keeps the body temperature just right even when the outside temperature drops.

These jeans are so comfortable you could sleep in them with extreme stretch and recovery. An incredibly flattering breech in a high rise fit. Horseshoe embossed on back pockets. A contour stretch waistband and a Silicone gripper dots on Full Seat adds to ultimate comfort in the saddle. Fabric is so stretchy that there is no need for velcro or sock at bottom, these just pull right on! A perfect breech for any type of weather.



THE POSH JEAN - indigo version

Indigo
Cozy Denim



SUPREME BREECH FULL SEAT

- **Style #:** 14820
- **Sizes:** 24R - 36L
- **Color:** Black

Fabric: Nylon/Micro Poly/Elastane with Silicon Full Seat gripper dots.

This super flattering higher rise breech is our new favorite breech. The fabric is slightly lighter in weight and cooler feeling yet with incredible hold and mold as well as stretch and recovery. You put it on and feel like you have lost 5 lbs.

Beautifully placed seams for a stunning flattering fit. Front scoop pockets with a beautiful reflective chain link. Pretty bling embroidery on back waistband. Sock style bottom for a snug fit under your boots. Beautiful Patterned Silicone on Full Seat for just the right amount of grip.



ENERGY BREECH FULL SEAT

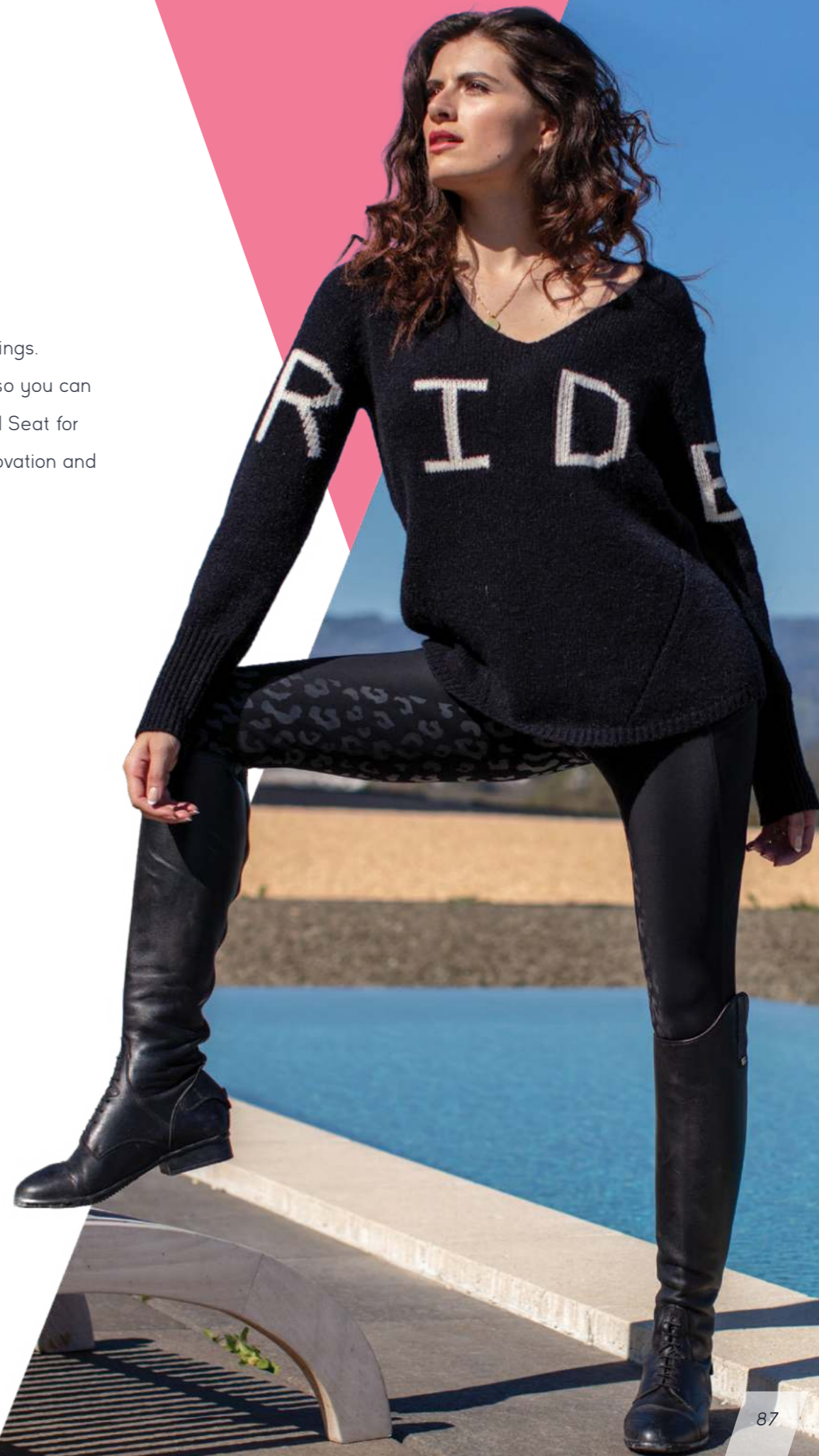
- **Style #:** 14907
- **Sizes:** 24 - 36
- **Color:** Black Leopard Seat - Hazelnut Leopard Seat
Grey - Black - White

Fabric: Nilit Innergy fiber Nylon/Spandex Superstretch with Silicon Full Seat gripper dots. Anti Cellulite, energizing, body sculpting, moisture wicking.

Our famous Nilit Fiber Technology now in a cut and sew Pull On Breech. This super flattering breech has 26% lycra so there is no need for front zipper, fabric stretches so much. The breech takes you from the saddle to the Yoga Studio to biking or running. Compression fabric with tummy control waistband and a drawcord band for a snugger fit if so wanted. Beautifully placed seams for super flattering fit.

Back and side pockets to stash your phone and belongings.

Reflective ticking stripe down the side of the breeches so you can easily be seen if riding at dawn or dusk. Silicone on Full Seat for absolute best grip. This is the latest and greatest in innovation and technology. You won't want to take them off.



ENERGY BREECH FULL SEAT

- *Style #:* 14907
- *Sizes:* 24 - 36
- *Color:* Black Leopard Seat - Hazelnut Leopard Seat
Grey - Black - White



ENERGY BREECH FULL SEAT

- **Style #:** 14907
- **Sizes:** 24 - 36
- **Color:** Black Leopard Seat - Hazelnut Leopard Seat
Grey - Black - White

White



Grey



Black



MIRACLE BREECH FULL SEAT

- **Style #:** 14818 • **Sizes:** 24R - 36L
- **Color:** White - Grey - Navy - Black - Slate Blue

Fabric: Nylon/Elastane super stretch. Seat in self fabric with silicone grip.

This breech is truly a Miracle breech in a fabric with 24% spandex for incredible stretch, support and recovery. In a flattering mid rise fit. Back comes up higher for a secure and perfect feel. Beautiful seaming on side of leg for a flattering look. Welt zip pockets in front with tiny crystals at edge of pocket and Silver reflective silicone piping. Sock style bottom for a snug fit under your boots. Back has a cross beltloop. Final touch is an embroidered logo with subtle crystal embellishment. This is our new absolute favorite breech!

NEXT PAGE FOR MORE COLORS! ▶



White



Grey



MIRACLE BREECH FULL SEAT

- Style #: 14818
- Sizes: 24R - 36L
- Color: White - Grey - Navy - Black - Slate Blue

Navy



Black



Slate Blue



MIRACLE BREECH KNEE PATCH

- **Style #:** 14819
- **Sizes:** 24R - 36L
- **Color:** British Khaki - Navy

Fabric: Nylon/Elastane super stretch. Knee Patch in self fabric with silicone grip.

This breech is truly a Miracle breech in a fabric with 24% spandex for incredible stretch, support and recovery. In a flattering mid rise fit. Back comes up higher for a secure and perfect feel. Beautiful seaming on side of leg for a flattering look.

Welt zip pockets in front with tiny crystals at edge of pocket and Silver reflective silicone piping. Sock style bottom for a snug fit under your boots. Back has a cross beltloop. Final touch is an embroidered logo with subtle crystal embellishment. This is our new absolute favorite breech!



British Khaki



GIRLS Shirts & Toppers



GIRLS CHAMPION POLO

- **Style #:** 18046-G
- **Sizes:** Ages 6 - 16
- **Colors:** Blue Sky - Pink

Fabric: Moisture Wicking
Bamboo/Cotton/Spandex

Silky yet technical this fun new polo is as functional as it is flattering. Slightly longer sleeve with contrast logo embroidery details throughout shirt.

Each colorway has a different embroidery with a catchy saying in back. Ribbed Collar with a striped pattern on back, can be worn up or down. Cuff also has a ribbed banding with a stripe. Feminine mother of pearl buttons on placket. The perfect riding shirt to any clinic or just for schooling.



GIRLS CHAMPION POLO

- Style #: 18046-G
- Sizes: Ages 6 - 16
- Colors: Blue Sky - Pink



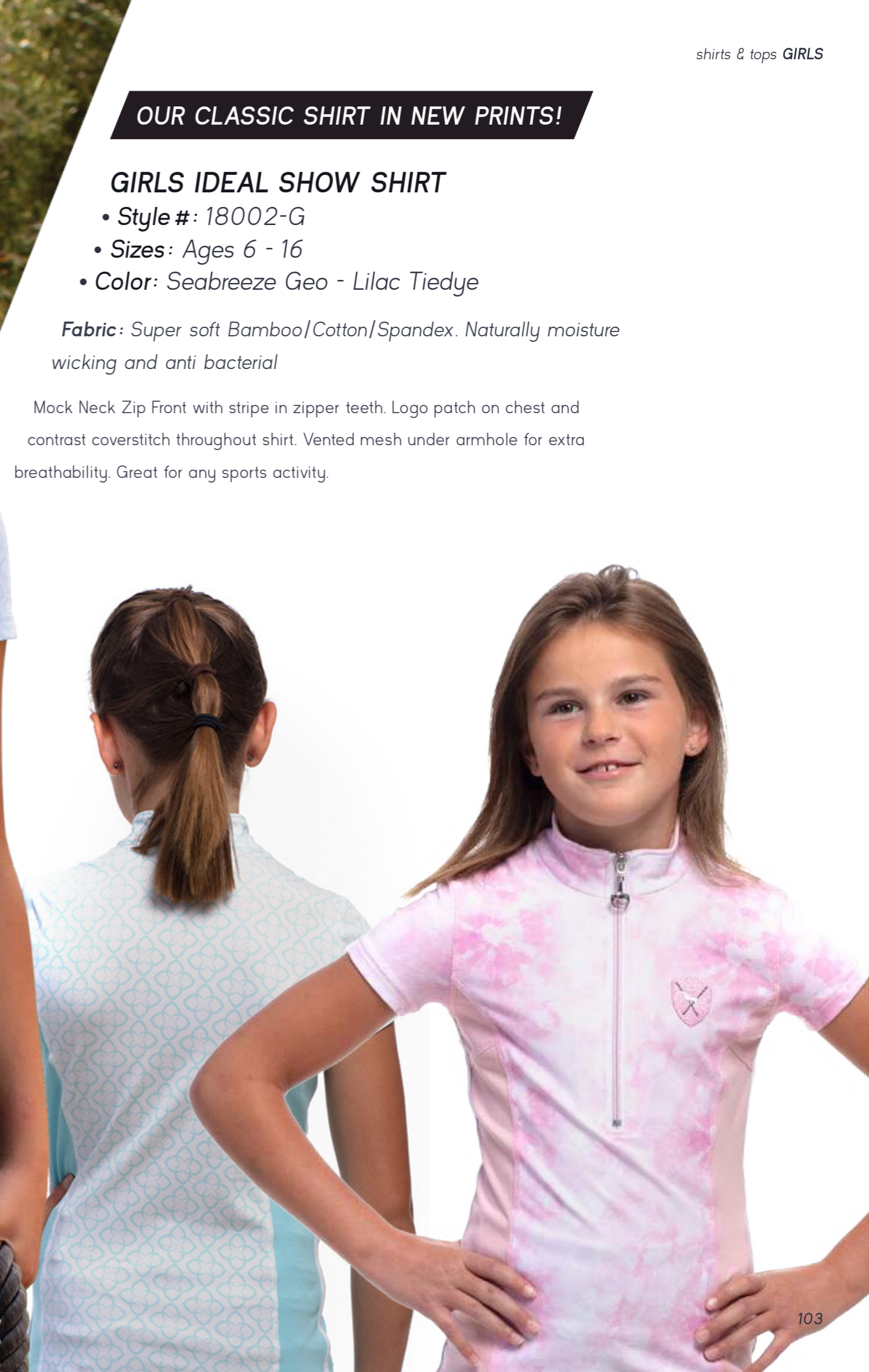
OUR CLASSIC SHIRT IN NEW PRINTS!

GIRLS IDEAL SHOW SHIRT

- **Style #:** 18002-G
- **Sizes:** Ages 6 - 16
- **Color:** Seabreeze Geo - Lilac Tiedye

Fabric: Super soft Bamboo/Cotton/Spandex. Naturally moisture wicking and anti bacterial

Mock Neck Zip Front with stripe in zipper teeth. Logo patch on chest and contrast coverstitch throughout shirt. Vented mesh under armhole for extra breathability. Great for any sports activity.



GIRLS breeches, jeans & tights



GIRLS RIDING TIGHTS

- **Style #:** 13801-G
- **Sizes:** Ages 6/8,
10/12
14/16
- **Colors:** Pink Flower
Sky Blue Flower

Fabric: Nylon / Spandex

A revolution in riding tights, this super flattering tight has it ALL. Takes you from the saddle to any sports activity. Seamless compression fabric in a slightly higher rise fit. Two beautiful patterns that matches the tops colors. Ribbed non slip fabric. You won't want to take them off!



GIRLS PERFORMANCE TIGHTS

• **Style #:** 13908-G • **Sizes:** Ages 8 - 16 • **Color:** Indigo

Fabric: Nylon / Spandex

Our famous Nilit Fiber Technology now in a cut and sew Pull On Tight. These super flattering tights take you from the saddle to the Yoga Studio to biking or running. Compression fabric with tummy control waistband. Beautifully placed seams for super flattering fit. Side pockets to stash your phone and belongings. Silicone on Full Seat for absolute best grip. This is the latest and greatest in innovation and technology. You won't want to take them off!





GIRLS HORSEBIT JEAN RIDER KNEE PATCH

• **Style #:** 14809-G • **Sizes:** Ages 8 - 16 • **Color:** Indigo

Fabric: 4-way stretch Cotton/Spandex denim with stretch ultra suede knee patches.

A classic and timeless equestrian jean breech in a lower rise with a custom fit waistband and velcro closures at the bottom. This breech features front and back jean pockets with pretty logo horsebit embroidery on the back pockets. They fit like your favorite pair of jeans. Only better as the fabric has stretch and gives you the ultimate comfort in the saddle.





MEN bree&ches jeans

ELITE JEAN FULL SEAT

- **Style #:** 24802
- **Sizes:** 28 - 38
- **Color:** Premium Blue Denim

Fabric: 4-Way Stretch Cotton/Tencel/
Rayon/Poly/Spandex Denim w/
Stretch Ultra Suede Full Seat.

A new jean breech in a super comfortable stretchy denim. A modified mid rise with a custom fit waistband and velcro closures at the bottom.

This Breech features front jean pockets and flattering jean pockets in back with an embossed horseshoe design. These will become your favorite pair of jeans. The stretchy denim gives you the ultimate comfort in the saddle.



ELITE JEAN KNEE PATCH

- **Style #:** 24803
- **Sizes:** 28 - 38
- **Color:** Indigo

Fabric: 4-Way Stretch Cotton/Tencel/Rayon/Poly/Spandex Denim w/ Stretch Ultra Suede Knee Patch.

A new jean breech in a super comfortable stretchy denim. A modified mid rise with a custom fit waistband and velcro closures at the bottom.

This Breech features front jean pockets and flattering jean pockets in back with an embossed horseshoe design. These will become your favorite pair of jeans.

The stretchy denim gives you the ultimate comfort in the saddle.





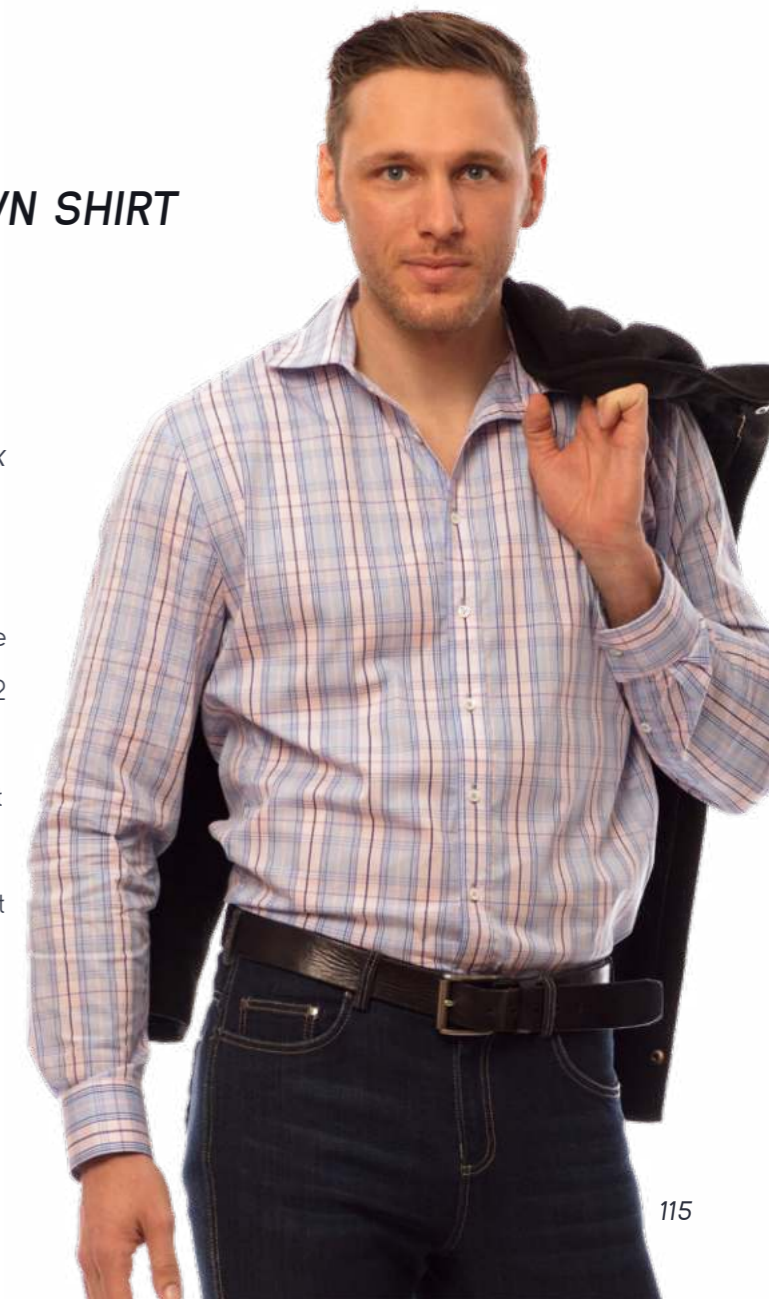
MEN Shirts & Tops

MEN'S BUTTON DOWN SHIRT

- **Style #:** 17015
- **Sizes:** S - XL
- **Color:** Blue Plaid

Fabric: Cotton/Nylon/Spandex

Super comfortable and flattering with stretch in a slimmer European cut with a shirrtail hem. Long sleeve button down with barrel cuffs with 2 buttons which allows you to control the snugness of the wrist. This shirt can go in the schooling ring and out on the town afterwards, it's that versatile. Mother of Pearl buttons finishes this, for sure to be your new favorite, shirt.



MEN'S IDEAL POLO

- **Style #:** 17014
- **Sizes:** S - XL
- **Color:** Navy - Black

Fabric: Super soft Bamboo/Cotton/Spandex

Silky yet technical new polo is as functional as it is flattering. Ribbed Collar, Cuff, Placket and side vent with a striped contrast fabric. Collar has two different stripes and can be worn down or turned up. Crest logo embroidery on Chest. Mother of Pearl buttons on placket.

This Polo is perfect for a clinic or for schooling, but looks great for golf or any sport and out to dinner too.





GR BASEBALL CAP

- **Style #:** 8888-89
- **Size:** Onesize
- **Color:** 8888 Black
8889 Navy

Fabric: Washed Down Cotton Twill

Best broken in cap you will ever wear!
Washed down soft cotton twill with an already broken in billet. Embossed horse logo with Goode Rider USA embroidered around. Contrast heavy pickstitch thread in a two tone color blocked style. No need to break this cap in as we already did! Great for any sports activity.



GOODE
RIDER

it's a
Passion



Address:
21665 Hyde Road
Sonoma, CA 95476
USA

Contact:
tel. 415-637-6226
www.gooderider.com
sales@gooderider.com

2022
Spring