



# 2022

WOMEN  
GIRLS  
MEN



# the WORLD needs LOVE!

*There is a desire to return to fashion that is timeless and ageless, with a bit of glamour that will be a wise investment for the long run.*

Clothes that are disconnected from trends and marketing, that have a deeper meaning and make you feel good and comfortable. Both essential and functional, but with feminine and spontaneous silhouettes, that are highlighted by colors.

Honeycomb rich yellows and richer, darker, browns accompanied by wild mushroom shades and cedar olives are important. These are offset by the cooler navy, black, bluish greys and ivory colors.

What the world needs now is some love!

*Enjoy!*

**KRISTIN & LORNA**



# Contents

## **WOMEN**

- jackets & coats \_\_\_\_\_ 07
- shirts & tops \_\_\_\_\_ 21
- breeches, jeans & tights \_\_\_\_\_ 41

## **GIRLS**

- shirts & tops \_\_\_\_\_ 91
- breeches, jeans & tights \_\_\_\_\_ 97

## **MEN**

- breeches & jeans \_\_\_\_\_ 103
- shirts & tops \_\_\_\_\_ 107

# WOMEN jackets coats

## **ELITE DOWN COAT**

- **Style #:** 16160
- **Sizes:** XS - XL
- **Color:** Olive Brown

**Fabric:** Water repellent  
Poly and Nylon.

With a heavy weight Down fill  
and a layered Down Vest inside.

Slight A line Shape and longer  
in back for a flattering shape.

Long Side vent zippers so you can  
unzip while riding or sitting. Double entry  
pockets in front with leather tabs. Hood with  
leather drawcord detail. 2 Way Zipper in  
front.

This Jacket will keep you warm on the  
coolest of days.



## DOWN WINTER PARKA

- **Style #:** 16156
- **Sizes:** XS - XL
- **Color:** Black

**Fabric:** Goose Down filled Nylon, Poly/Spandex Neoprene Side panels. Faux Fur on Hood and Inside Collar as well as lining.

This beautifully tailored, goose down parka is perfect for cold and snowy winter days. Cut a little bit longer with a gusset and vents in back. Corset like stitching at waist for a stunning hourglass silhouette.

Warm faux fur inside lining and fur around a removable hood and in collar keeps you toasty. Pompom fur drawcords for a cute fashion statement. Fleece inside zip pockets as well as cozy thumbhole storm cuffs, keep your hands warm.



## POWER LUXE JACKET

- **Style #:** 16154
- **Sizes:** XS - XL
- **Colors:** Black - Marigold

**Fabric:** Quilted Nylon  
with goose-down fill

The perfect sport jacket is super lightweight yet warm in a beautiful streamlined silhouette, with an attached hood. Packs into a very small space, so great for traveling. 2 way contrast colored zip front and zip front pockets. The jacket is cut slightly longer in back for a flattering fit. Great for layering under a heavy jacket as well for colder days. Hood is removable! The perfect jacket for any sports.



## POWER LUXE VEST

- **Style #:** 16155
- **Sizes:** XS - XL
- **Colors:** Sky Blue - Black

*Fabric:* Quilted Nylon with goose-down fill

The perfect sport vest is super lightweight yet warm in a beautiful streamlined silhouette, with an attached hood. Packs into a very small space, so great for traveling. 2 way contrast colored zip front and zip front pockets. The vest is cut slightly longer in back for a flattering fit. Great for layering under a heavy jacket as well for colder days. Hood is removable! The perfect vest for any sports.



## POWER LUXE VEST

- Style #: 16155
- Sizes: XS - XL
- Colors: Sky Blue - Black





## **DOWN CARDIGAN**

- **Style #:** 16159
- **Sizes:** XS - XL
- **Colors:** Camel - Black

**Fabric:** Quilted Goosedown Filled Nylon Front with soft Acrylic/Poly/Nylon knitted sleeves, collar and back.

Cut a little bit shorter, great for riding, skiing, hiking or any sport. Heavy weight Knit has soft cashmere like hand. Nylon in front is water repellent. Pocket on sleeve with leather GR logo. Hidden Zippers on side seam finishes this great jacket.



## DOWN CARDIGAN

- Style #: 16159
- Sizes: XS - XL
- Colors: Camel - Black



# WOMEN Shirts & Tops

## RIDE SWEATER

- **Style #:** 19037
- **Sizes:** XS - XL
- **Colors:** Ivory  
Heather Charcoal

**Fabric:** Soft Acrylic/Poly/  
Nylon Blend

With the word RIDE spelled out over sleeves and chest, this sweater makes a statement while still being soft and warm.

Pretty "vent" stitch in front and back for an elegant look. Longer in Back and absolutely perfect to wear over any of our tights! We live in it!



## RIDE SWEATER

- Style #: 19037
- Sizes: XS - XL
- Colors: Ivory - Heather Charcoal



## CHILL OUT FLEECE

- Style #: 18160 • Sizes: XS - XL
- Colors: Oatmeal Heather - Chocolate  
Black Heather

*Fabric:* Soft, Cozy, Stretchy Poly Fleece

Mock neck with zip front and folded out fleece lined cuffs, collar and bottom hem. Zip pocket in back to carry your belongings while you are riding or exercising. Pretty princess paneling in front and back for an hourglass silhouette.

Bottom hem has a shirttail and flares out a little bit for a flattering shape.

**NEXT PAGE FOR  
THE BACK VIEW** ▶



**CHILL OUT FLEECE** • Style #: 18160 • Sizes: XS - XL • Colors: S Oatmeal Heather - Chocolate - Black Heather



### IDEAL SHOW SHIRT

- **Style #:** 18040
- **Sizes:** XS - XL
- **Colors:** Black Print  
Taupe Leopard  
Navy

### OUR CLASSIC SHIRT IN NEW PRINTS!

**Fabric:** Super soft Bamboo/Cotton/Spandex.  
Naturally moisture wicking and anti bacterial.

Mock Neck Zip Front with stripe in zipper teeth. Logo patch on chest and contrast coverstitch throughout shirt. Vented mesh under armhole for extra breathability. Great for any sports activity.

**NEXT PAGES FOR TAUPE LEOPARD  
AND NAVY ▶**



**IDEAL SHOW SHIRT** • Style #: 18040 • Sizes: XS - XL • Colors: Black Print - Taupe Leopard - Navy **NEXT PAGE FOR NAVY ▶**





## IDEAL SHOW SHIRT

• Style #: 18040 • Sizes: XS - XL • Colors: Black Print - Taupe Leopard - Navy



## **GLAM SPORT SHIRT**

- **Style #:** 18148 • **Sizes:** XS - XL
- **Colors:** Winter White Heather  
Black

**Fabric:** Super soft Bamboo/Cotton/Spandex with fleece inside. Naturally moisture wicking and anti-bacterial with mesh venting in back neck & sleeve.

Beautiful princess paneling for a sexy streamlined silhouette. Metaluxe front mock neck zipper. Zipper in back to store your belongings while exercising or traveling. Small logo embroidery with small crystals on chest. Thumbhole grip on sleeves. Contrast coverstitch.



## GLAM SPORT SHIRT

- **Style #:** 18148
- **Sizes:** XS - XL
- **Colors:** Winter White Heather - Black



## **JEAN SHIRT**

- **Style #:** 18052
- **Sizes:** XS - XL
- **Colors:** Black Denim

*Fabric:* Super Stretch washdown denim in a medium weight jean fabric.

Beautiful princess paneling for a sexy streamlined silhouette. Mother of pearl buttons. 2 flap chest pockets. Logo patch on sleeve and contrast stitching throughout shirt. Comfortable and flattering fit.





WOMEN

# breeches jeans & tights

## CARGO JEAN FULL SEAT

- **Style #:** 14910
- **Sizes:** 24R - 36L
- **Colors:** Olive Denim

**Fabric:** Cotton/Poly/Elastane  
super stretch. Silicone gripper  
dot Full Seat.

A new composition of specially twisted yarns for incredible stretch and recovery. Leather D-Ring tab on beltloop. An incredibly flattering breech in a mid rise fit. So comfy you could sleep in them. Horse Shoe embossed embroidery on back pockets and whips embossed on hardware. A contour stretch waistband and a Silicone gripper dots on Full Seat adds to ultimate comfort in the saddle. Side cargo pocket with flap. Fabric is so stretchy that there is no need for velcro or sock at bottom.



## CARGO JEAN KNEE PATCH

- **Style #:** 14911 • **Sizes:** XS - XL
- **Colors:** Olive Denim

**Fabric:** Cotton/Poly/Elastane super stretch.  
Silicone gripper dot Knee Patch.

A new composition of specially twisted yarns for incredible stretch and recovery. Leather D-Ring tab on beltloop. An incredibly flattering breech in a mid rise fit. So comfy you could sleep in them. Horse Shoe embossed embroidery on back pockets and whips embossed on hardware. A contour stretch waistband and a Silicone gripper dots on Knee Patch adds to ultimate comfort in the saddle. Side cargo pocket with flap. Fabric is so stretchy that there is no need for velcro or sock at bottom.



**ELITE FLEECE BREECH FULL SEAT** • Style #: 14822 • Sizes: 24R-36L • Colors: Navy

**Fabric:** Nylon/Elastane with fleece lining.

This super flattering higher rise breech is our new favorite breech. The fabric is medium body in weight and cooler feeling yet with incredible hold and mold as well as stretch and recovery. You put it on and feel like you have lost 5 lbs.

Beautifully placed seams for a stunning flattering fit. Front scoop pockets with beautiful subtle crystals around pocket. Pretty bling embroidery on back beltloop. Sock style bottom for a snug fit under your boots. Patterned Silicone for grip. No need for velcro or sock at bottom.



## ELITE BREECH FULL SEAT

• **Style #:** 14821 • **Sizes:** 24R - 36L • **Colors:** Black - Plum

**Fabric:** Nylon/Elasthan

This super flattering higher rise breech is our new favorite breech. The fabric is medium body in weight and cooler feeling yet with incredible hold and mold as well as stretch and recovery. You put it on and feel like you have lost 5 lbs.

Beautifully placed seams for a stunning flattering fit. Front scoop pockets with beautiful subtle crystals around pocket. Pretty bling embroidery on back beltloop. Sock style bottom for a snug fit under your boots. Patterned Silicone for grip.

Black



Plum





## EQUESTRIAN BOOTCUT JEAN

• Style #: 15000 • Sizes: 24R-40L\* • Colors: Vintage Wash - Black Denim

**\* NEW EXTENDED SIZE RANGE!**

**Fabric:** Stretch Cotton/Tencel/Rayon/Poly/Spandex Denim

Our favorite jean breech in a super comfortable stretchy denim. A modified mid rise with a contour waistband and 16.5" Bootcut bottom. This Breech features front jean pockets and flattering jean pockets

in back with an embossed spur design. These will become your favorite pair of jeans. The stretchy denim gives you the ultimate comfort in the saddle. And are great out for dinner after your ride!

*Vintage Wash*

*Black Denim*



## EQUESTRIAN JEAN FULL SEAT

• Style #: 14901 • Sizes: 24R-40L\* • Colors: Vintage Wash - Black Denim

**\* NEW EXTENDED SIZE RANGE!**

*Fabric: Cotton/Tencel/Rayon/Poly/Spandex denim blend w/stretch ultra Suede full seat*

Our favorite jean breech in a super comfortable stretchy denim. A modified mid rise with a custom fit waistband and velcro closures at the bottom. Faux Leather stretches so you are immediately in the saddle. This Breech features front

jean pockets and flattering jean pockets in back with an embossed spur design. These will become your favorite pair of jeans. The stretchy denim gives you the ultimate comfort in the saddle.

Vintage Wash

Black Denim



## EQUESTRIAN JEAN KNEE PATCH

• Style #: 14900 • Sizes: 24R-40L\* • Colors: Black Denim - Vintage Wash **\* NEW EXTENDED SIZE RANGE!**

*Fabric: 4-Way Stretch Cotton/Tencel/Rayon/Poly/Spandex Denim blend with stretch ultra Suede knee patch.*

Our favorite jean breech in a super comfortable stretchy denim. A modified mid rise w/ a custom fit waistband and velcro closures at the bottom. This Breech features front jean pockets and flattering

jean pockets in back with an embossed spur design. These will become your favorite pair of jeans. The stretchy denim gives you the ultimate comfort in the saddle.

Vintage Wash



Black Denim



## MIRACLE BREECH FULL SEAT

- **Style #:** 14818 • **Sizes:** 24R - 36L
- **Color:** White - Grey - Brownie - Black - Slate Blue

*Fabric:* Nylon/Elastane super stretch. Seat in self fabric with silicone grip.

This breech is truly a Miracle breech in a fabric with 24% spandex for incredible stretch, support and recovery. In a flattering mid rise fit. Back comes up higher for a secure and perfect feel. Beautiful seaming on side of leg for a flattering look. Welt zip pockets in front with tiny crystals at edge of pocket and Silver reflective silicone piping. Sock style bottom for a snug fit under your boots. Back has a cross beltloop. Final touch is an embroidered logo with subtle crystal embellishment. This is our new absolute favorite breech!

**NEXT PAGE FOR MORE COLORS! ▶**



White



Grey



## MIRACLE BREECH FULL SEAT

- Style #: 14818
- Sizes: 24R - 36L
- Color: White - Grey - Brownie - Black - Slate Blue

Brownie



Black



Slate  
Blue



## MIRACLE BREECH KNEE PATCH

- Style #: 14819 • Sizes: 24R - 36L
- Color: British Khaki - Navy

**Fabric:** Nylon/Elastane super stretch. Knee Patch in self fabric with silicone grip.

This breech is truly a Miracle breech in a fabric with 24% spandex for incredible stretch, support and recovery. In a flattering mid rise fit. Back comes up higher for a secure and perfect feel. Beautiful seaming on side of leg for a flattering look.

Welt zip pockets in front with tiny crystals at edge of pocket and Silver reflective silicone piping. Sock style bottom for a snug fit under your boots. Back has a cross beltloop. Final touch is an embroidered logo with subtle crystal embellishment. This is our new absolute favorite breech!



Navy



British Khaki





## THE POSH JEAN

- **Style #:** 14909
- **Sizes:** 24R - 36L
- **Colors:** Black Cozy Denim - Indigo Cozy Denim

**Fabric:** Cozy Fiber Denim, a composition of yarns twice as fine as silk and 3 times finer than cashmere for an all in one double textured hybrid denim with incredible soft brushed “fleece like” inside. With thermal insulation and wind protection it keeps the body temperature just right even when the outside temperature drops.

These jeans are so comfortable you could sleep in them with extreme stretch and recovery. An incredibly flattering breech in a high rise fit. Horseshoe embossed on back pockets. A contour stretch waistband and a Silicone gripper dots on Full Seat adds to ultimate comfort in the saddle. Fabric is so stretchy that there is no need for velcro or sock at bottom, these just pull right on!

A perfect breech for any type of weather.



## THE POSH JEAN

- Style #: 14909
- Sizes: 24R - 36L
- Colors: Black Cozy Denim - Indigo Cozy Denim





## ENERGY BREECH FULL SEAT

- **Style #:** 14907
- **Sizes:** 24 - 36
- **Color:** Black - White - Grey

**Fabric:** Nilit Innergy fiber Nylon/Spandex Superstretch with Silicon Full Seat gripper dots. Anti Cellulite, energizing, body sculpting, moisture wicking.

Our famous Nilit Fiber Technology now in a cut and sew Pull On Breech. This super flattering breech has 26% lycra so there is no need for front zipper, fabric stretches so much. The breech takes you from the saddle to the Yoga Studio to biking or running. Compression fabric with tummy control waistband and a drawcord band for a snugger fit if so wanted. Beautifully placed seams for super flattering fit.

Back and side pockets to stash your phone and belongings. Reflective ticking stripe down the side of the breeches so you can easily be seen if riding at dawn or dusk. Silicone on Full Seat for absolute best grip. This is the latest and greatest in innovation and technology. You won't want to take them off.

Black



## ENERGY BREECH FULL SEAT

- Style #: 14907
- Sizes: 24 - 36
- Color: Black - White - Grey

White



Grey



## **SUPREME BREECH FULL SEAT**

- **Style #:** 14820
- **Sizes:** 24R - 36L
- **Color:** Black

*Fabric:* Nylon/Micro Poly/Elastane with Silicon Full Seat gripper dots.

This super flattering higher rise breech is our new favorite breech. The fabric is slightly lighter in weight and cooler feeling yet with incredible hold and mold as well as stretch and recovery. You put it on and feel like you have lost 5 lbs. Beautifully placed seams for a stunning flattering fit.

Front scoop pockets with a beautiful reflective chain link. Pretty bling embroidery on back waistband. Sock style bottom for a snug fit under your boots. Beautiful Patterned Silicone on Full Seat for just the right amount of grip.



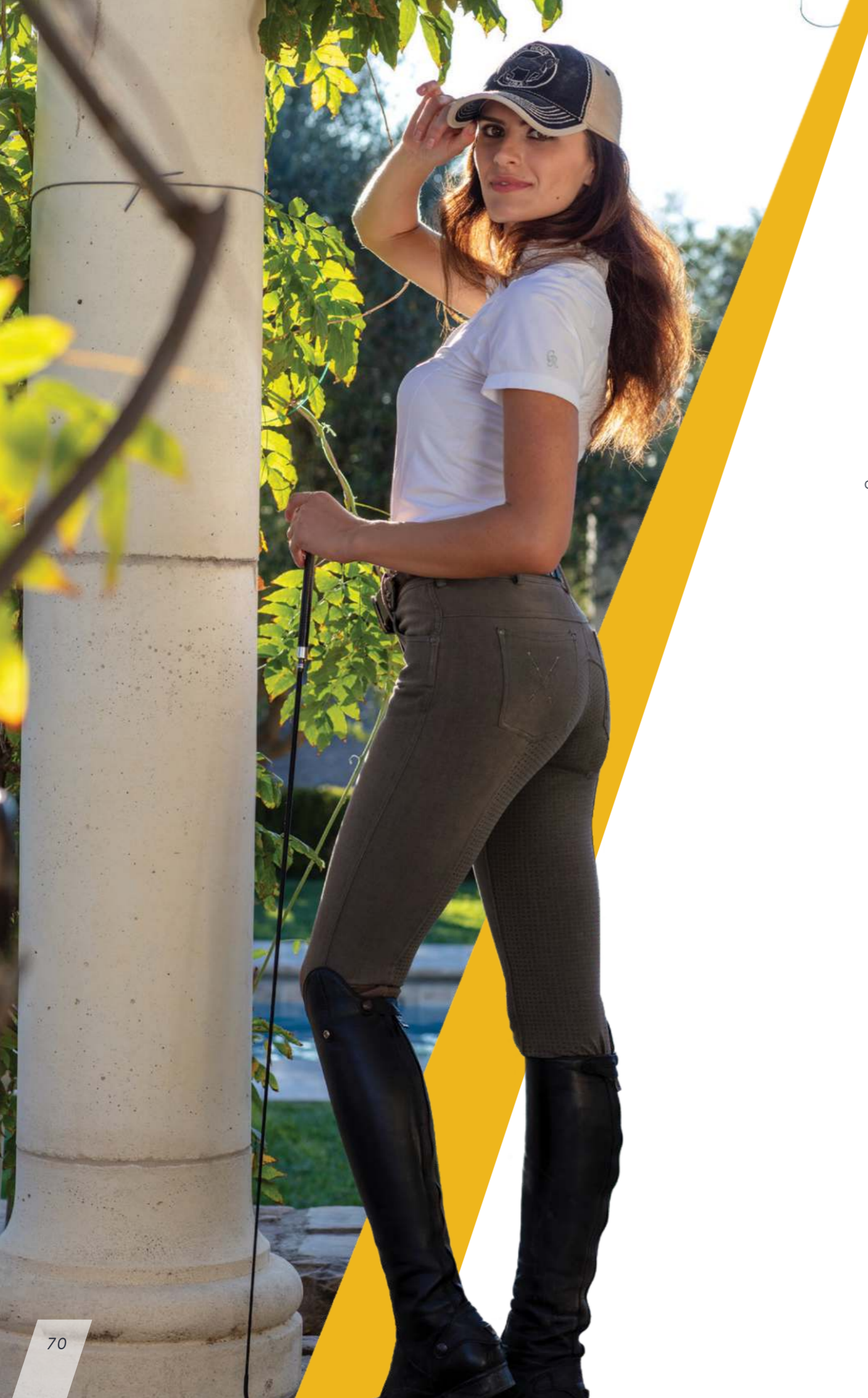
## VOGUE JEAN FULL SEAT

- **Style #:** 14902
- **Sizes:** 24R - 36L
- **Color:** Taupe Denim - Black Denim - Blue/Black Denim

**Fabric:** Cotton/Poly/Elastane super stretch. Silicone gripper dot Full Seat.

A new composition of specially twisted yarns for incredible stretch and recovery. These jeans are so comfortable you could sleep in them. An incredibly flattering breech in a mid rise fit. Subtle whips and horse shoe embroidery on back pockets and whips embossed on hardware.

A contour stretch waistband and a Silicone gripper dots on Full Seat adds to ultimate comfort in the saddle. Fabric is so stretchy that there is no need for velcro or sock at bottom, these just pull right on! Sure to become your favorite breech.



**VOGUE JEAN FULL SEAT**

- Style #: 14902 • Sizes: 24R - 36L
- Colors: Taupe Denim - Black Denim  
Blue/Black Denim

Black Denim



Blue/Black  
Denim



## PERFECT SPORTS TIGHTS

- **Style #:** 13909 • **Sizes:** XS - XL
- **Colors:** Chocolate Crocodile - Black Python - Grey Camo - Grey - Black

**Fabric:** Nylon/Spandex lightweight Superstretch with Silicone Full Seat gripper dots.

These tights are perfect for any athletics, from the saddle to the Yoga Studio to biking or running. Beautifully placed seams for a stunning flattering fit, with a pretty vented mesh elastic band

at side seam. Side pockets to stash your phone and belongings. Silicone on Full Seat for absolute best grip. This is the latest and greatest in innovation and technology. You won't take them off.



### PERFECT SPORTS TIGHTS

- Style #: 13909 • Sizes: XS - XL
- Colors: Chocolate Crocodile - Black Python  
Grey Camo - Grey - Black



Black Python



Grey Camo



## PERFECT SPORTS TIGHTS

- **Style #:** 13909 • **Sizes:** XS - XL
- **Color:** Chocolate Crocodile - Black Python  
Grey Camo - Grey - Black

Grey



Black





## WINTER SHAPER FLEECE TIGHTS

- **Style #:** 13911     *Fabric:* Soft fleece lined nylon/
- **Sizes:** XS - XL     *spandex. Stretch with silicone full seat*
- **Color:** Black     *gripper dots for the best grip*

The Shaper fleece tights are perfect to stay cozy this winter. Whether you are riding, running or going to a yoga class, these tights will be your go to's this winter. Made for the cold and cozy enough to stay in all day everyday.



## SHAPER TIGHTS

- **Style #:** 13908
- **Sizes:** XS - XL
- **Colors:** Indigo - Black

*Fabric:* Sensil Innergy fiber Nylon/Spandex.  
Super-stretch with Silicone Full Seat gripper dots. Anti Cellulite, energising, body sculpting, moisture wicking.

These tights takes you from the saddle to the Yoga Studio to biking or running. Compression fabric with tummy control waistband. Beautifully placed seams for a stunning flattering fit. Back and side pockets to stash your phone and belongings. Silicone on Full Seat for absolute best grip. This is the latest and greatest in innovation and technology. You won't take them off.

**NEXT PAGE FOR THE  
BLACK TIGHTS! ▶**



## SHAPER TIGHTS

- Style #: 13908
- Sizes: XS - XL
- Color: Indigo - Black



**BODYSCULPTING FITNESS TIGHTS**

- Style #: 18159 • Sizes: XS/S - M - L/XL
- Colors: Silver

*Fabric:* Seamless Polyamide/Elastane with Lumiton Technology Fiber.

This is the latest and greatest in Technology. Made from a fiber that absorbs sunlight and turns it into red light and near infrared light. Promotes healthier skin, reduces inflammation, relieves joint pain and arthritis as well as

increases endurance and helps muscle fatigue, even reduces fat. 10-15 degrees cooler than other fabrics and SPF 50. In a high waist compression tight, flattering seaming details, silicone grip seat and venting mesh on side seam.



## BODYSHAPER CROP TIGHTS

- **Style #:** 13910 • **Sizes:** XS/S - M - L/XL
- **Color:** Indigo - Black

**Fabric:** Nylon/Spandex seamless crop tights for any sport. Moisture wicking and anti bacterial. Beautiful stitch detailing for a sexy streamlined silhouette.

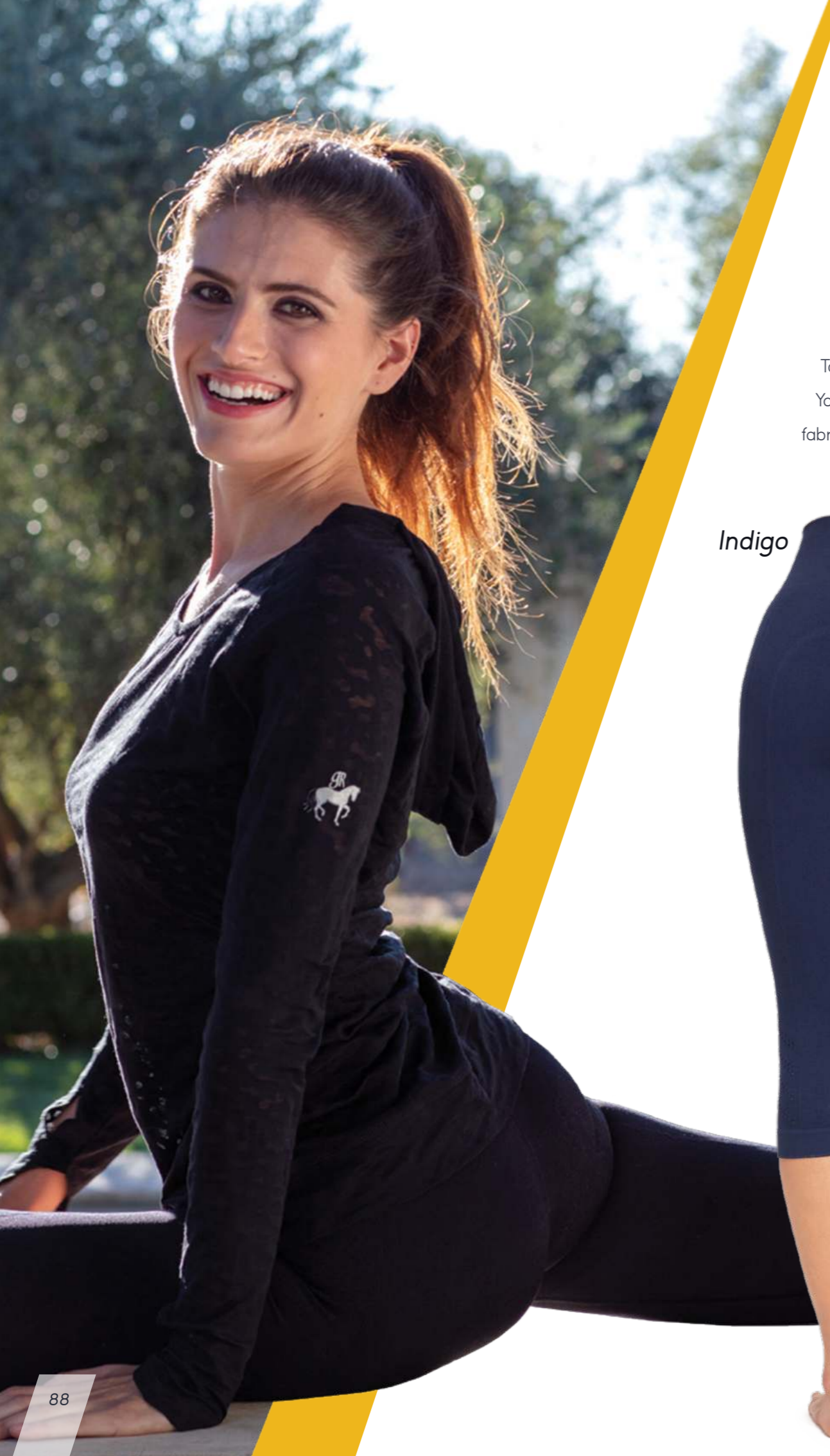
Takes you from the saddle to running, biking, hiking or the Yoga Studio. Ribbed fabric for grip. Seamless compression fabric with tummy control waistband. Front inside pocket to

stash your belongings while exercising. Ventilated side panels for extra breathability and coolness. These are cropped to eliminate extra bulk under your boots.

Indigo



Black



# GIRLS Shirts & Tops



## **GIRLS CHAMPION POLO**

- **Style #:** 18046-G
- **Sizes:** Ages 6 - 16
- **Colors:** Blue Sky - Pink

**Fabric:** Moisture Wicking  
Bamboo/Cotton/Spandex

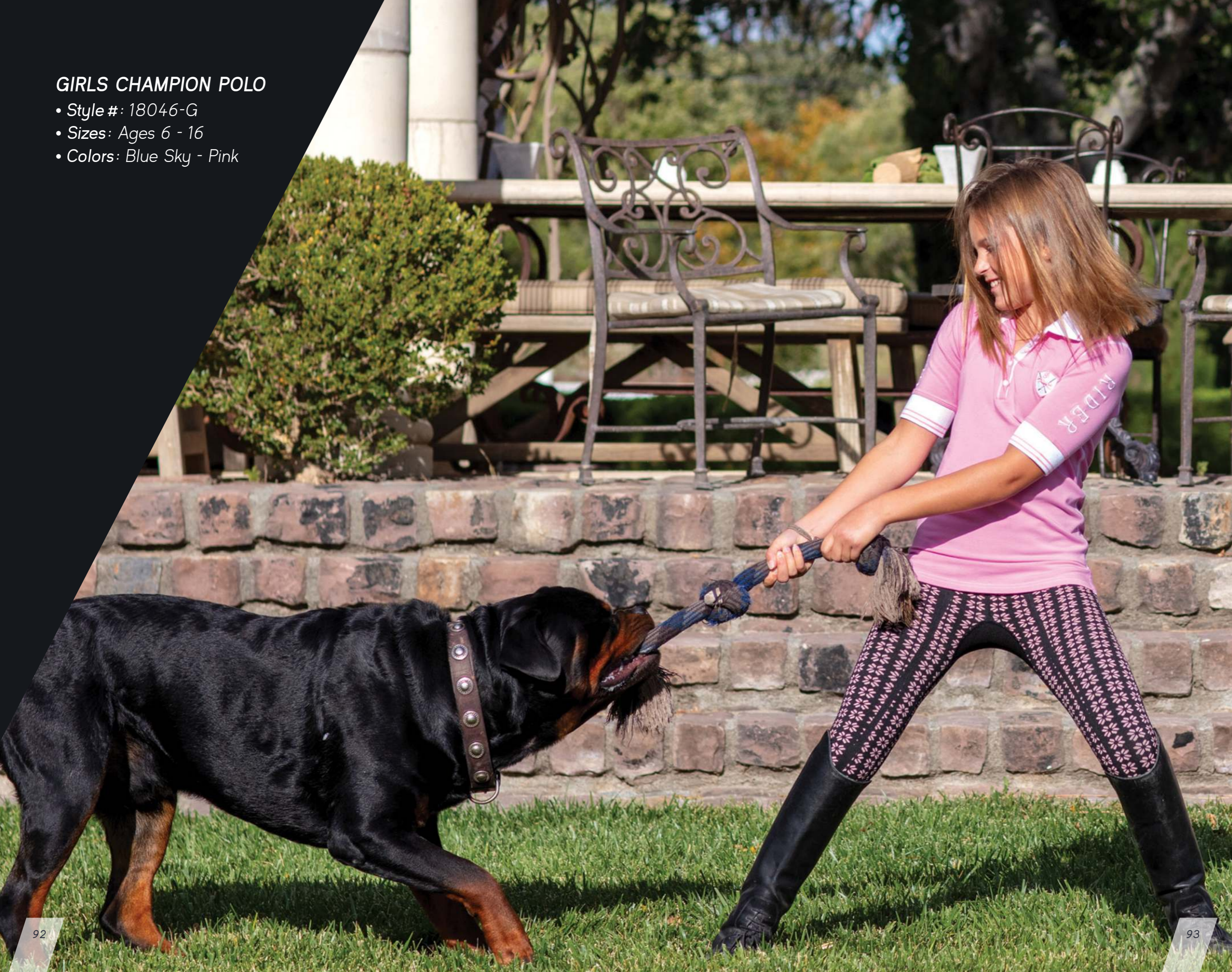
Silky yet technical this fun new polo is as functional as it is flattering. Slightly longer sleeve with contrast logo embroidery details throughout shirt.

Each colorway has a different embroidery with a catchy saying in back. Ribbed Collar with a striped pattern on back, can be worn up or down. Cuff also has a ribbed banding with a stripe. Feminine mother of pearl buttons on placket. The perfect riding shirt to any clinic or just for schooling.



## GIRLS CHAMPION POLO

- Style #: 18046-G
- Sizes: Ages 6 - 16
- Colors: Blue Sky - Pink





**OUR CLASSIC SHIRT IN NEW PRINTS!**

**GIRLS IDEAL SHOW SHIRT**

- **Style #:** 18002-G
- **Sizes:** Ages 6 - 16
- **Color:** Seabreeze Geo - Pink Tiedye

**Fabric:** Super soft Bamboo/Cotton/Spandex. Naturally moisture wicking and anti bacterial

Mock Neck Zip Front with stripe in zipper teeth. Logo patch on chest and contrast coverstitch throughout shirt. Vented mesh under armhole for extra breathability. Great for any sports activity.







# GIRLS breeches, jeans & tights

## GIRLS RIDING TIGHTS

- **Style #:** 14801-G
- **Sizes:** Ages 6/8,  
10/12  
14/16
- **Colors:** Pink Flower  
Sky Blue Flower

**Fabric:** Nylon / Spandex

A revolution in riding tights, this super flattering tight has it ALL. Takes you from the saddle to any sports activity. Seamless compression fabric in a slightly higher rise fit. Two beautiful patterns that matches the tops colors. Ribbed non slip fabric. You won't want to take them off!



## GIRLS PERFORMANCE TIGHTS

• **Style #:** 13908-G • **Sizes:** Ages 8 - 16 • **Color:** Indigo

**Fabric:** Nylon / Spandex

Our famous Nilit Fiber Technology now in a cut and sew Pull On Tight. These super flattering tights take you from the saddle to the Yoga Studio to biking or running. Compression fabric with tummy control waistband. Beautifully placed seams for super flattering fit. Side pockets to stash your phone and belongings. Silicone on Full Seat for absolute best grip. This is the latest and greatest in innovation and technology. You won't want to take them off!





**GIRLS HORSEBIT JEAN RIDER KNEE PATCH**  
• Style #: 14809-G • Sizes: Ages 8 - 16 • Color: Indigo

*Fabric: 4-way stretch Cotton/Spandex denim with stretch ultra suede knee patches.*

A classic and timeless equestrian jean breech in a lower rise with a custom fit waistband and velcro closures at the bottom. This breech features front and back jean pockets with pretty logo horsebit embroidery on the back pockets. They fit like your favorite pair of jeans. Only better as the fabric has stretch and gives you the ultimate comfort in the saddle.





# MEN bree&ches jeans

## **ELITE JEAN FULL SEAT**

- **Style #:** 24802
- **Sizes:** 28 - 38
- **Color:** Premium Blue Denim

**Fabric:** 4-Way Stretch Cotton/Tencel/  
Rayon/Poly/Spandex Denim w/  
Stretch Ultra Suede Full Seat.

A new jean breech in a super comfortable stretchy denim. A modified mid rise with a custom fit waistband and velcro closures at the bottom.

This Breech features front jean pockets and flattering jean pockets in back with an embossed horseshoe design. These will become your favorite pair of jeans. The stretchy denim gives you the ultimate comfort in the saddle.



## ELITE JEAN KNEE PATCH

- **Style #:** 24803
- **Sizes:** 28 - 38
- **Color:** Indigo

**Fabric:** 4-Way Stretch Cotton/Tencel/Rayon/Poly/Spandex Denim w/ Stretch Ultra Suede Knee Patch.

A new jean breech in a super comfortable stretchy denim. A modified mid rise with a custom fit waistband and velcro closures at the bottom.

This Breech features front jean pockets and flattering jean pockets in back with an embossed horseshoe design. These will become your favorite pair of jeans.

The stretchy denim gives you the ultimate comfort in the saddle.





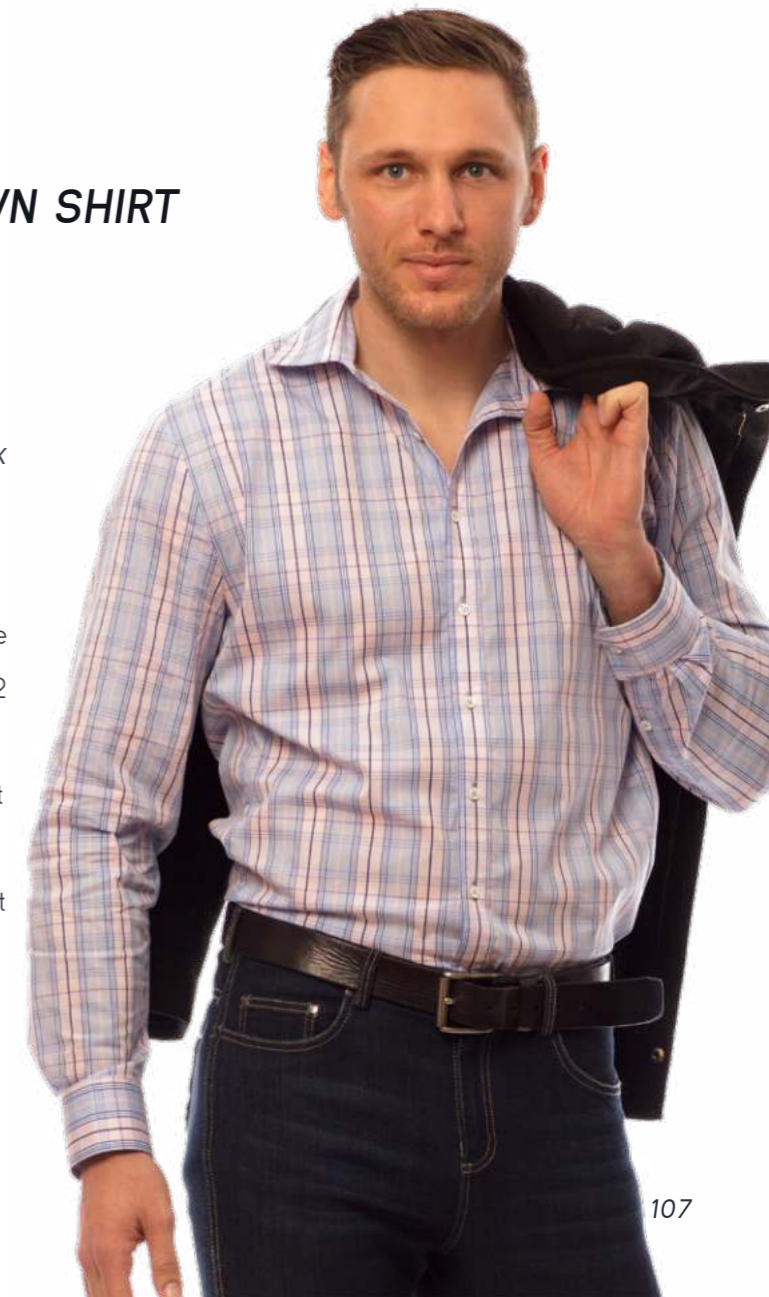
# MEN Shirts & Tops

## **MEN'S BUTTON DOWN SHIRT**

- **Style #:** 17015
- **Sizes:** S - XL
- **Color:** Blue Plaid

**Fabric:** Cotton/Nylon/Spandex

Super comfortable and flattering with stretch in a slimmer European cut with a shirrtail hem. Long sleeve button down with barrel cuffs with 2 buttons which allows you to control the snugness of the wrist. This shirt can go in the schooling ring and out on the town afterwards, it's that versatile. Mother of Pearl buttons finishes this, for sure to be your new favorite, shirt.





## MEN'S IDEAL POLO

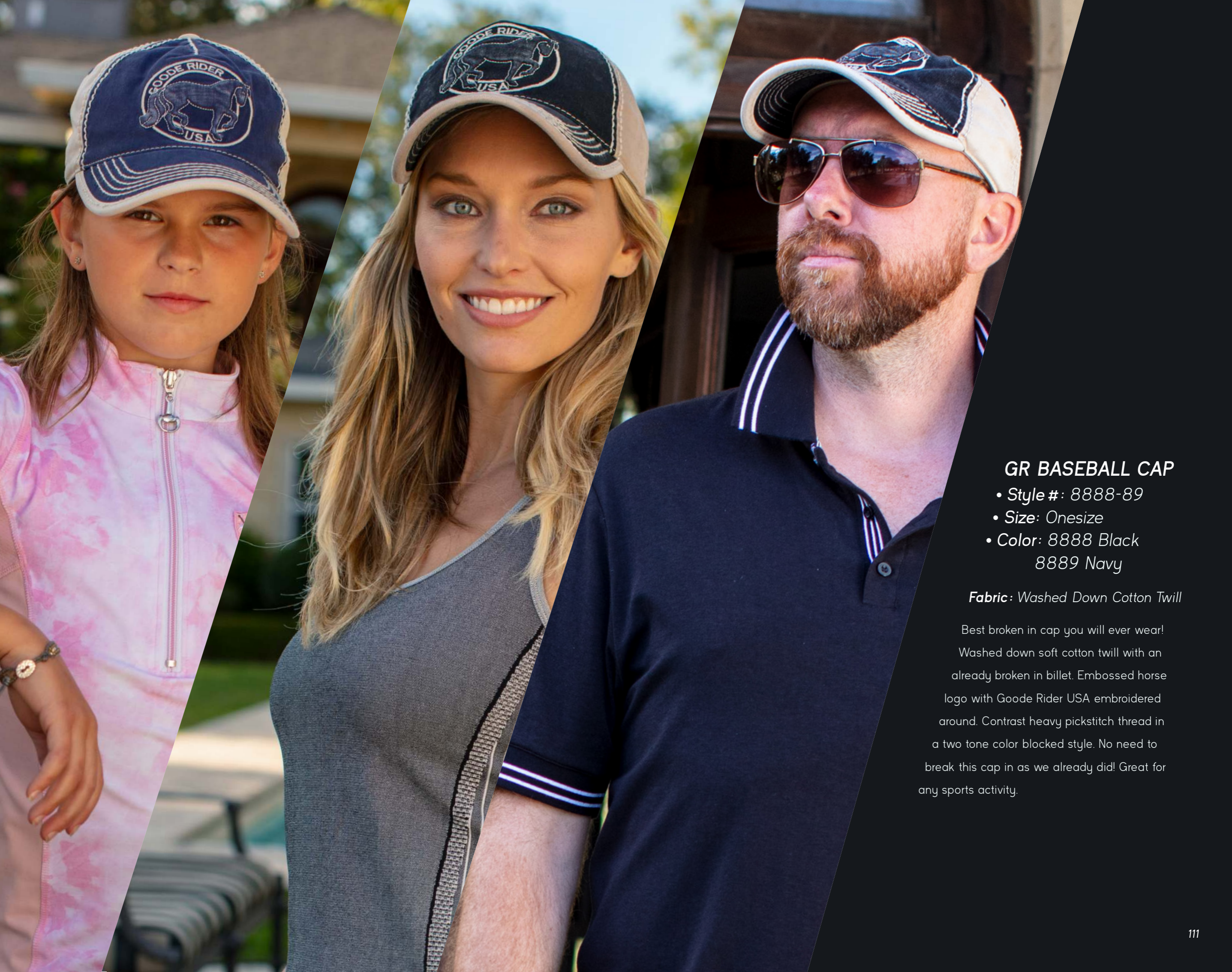
- **Style #:** 17014
- **Sizes:** S - XL
- **Color:** Navy - Black

**Fabric:** Super soft Bamboo/Cotton/Spandex

Silky yet technical new polo is as functional as it is flattering. Ribbed Collar, Cuff, Placket and side vent with a striped contrast fabric. Collar has two different stripes and can be worn down or turned up. Crest logo embroidery on Chest. Mother of Pearl buttons on placket.

This Polo is perfect for a clinic or for schooling, but looks great for golf or any sport and out to dinner too.





### **GR BASEBALL CAP**

- **Style #:** 8888-89
- **Size:** Onesize
- **Color:** 8888 Black  
8889 Navy

**Fabric:** Washed Down Cotton Twill

Best broken in cap you will ever wear!  
Washed down soft cotton twill with an already broken in billet. Embossed horse logo with Goode Rider USA embroidered around. Contrast heavy pickstitch thread in a two tone color blocked style. No need to break this cap in as we already did! Great for any sports activity.





GOODE  
RIDER

it's a  
Passion



**Address:**  
21665 Hyde Road  
Sonoma, CA 95476  
USA

**Contact:**  
tel. 415-637-6226  
[www.gooderider.com](http://www.gooderider.com)  
[sales@gooderider.com](mailto:sales@gooderider.com)

2022 FALL 22