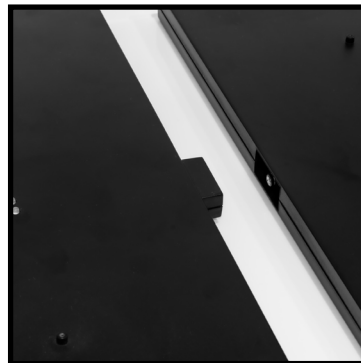
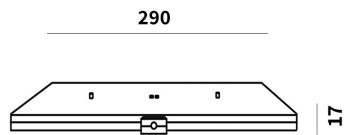


QI DUAL CHARGING PAD

MODEL NO:	90202-QI
DIMENSIONS:	290MM(W) X 145MM(L) X 17MM(H)
WEIGHT:	0.200KG
CHARGING CAPACITY:	1-2 LAMPS
VOLTAGE INPUT	100-240V
OUTPUT	5V-12V MAX 2A / 10W
FREQUENCY	50 / 60 HZ

*INCLUDES 0.5M USB - DC CABLE



*CONNECT TECHNOLOGY FEATURE

