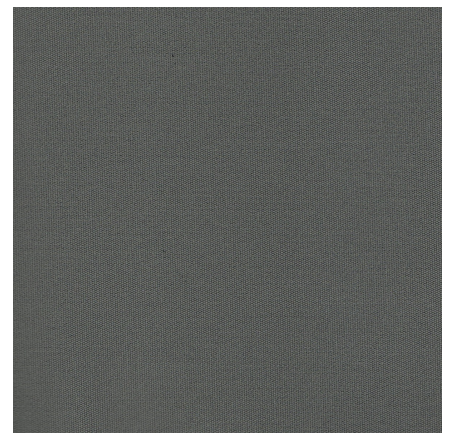
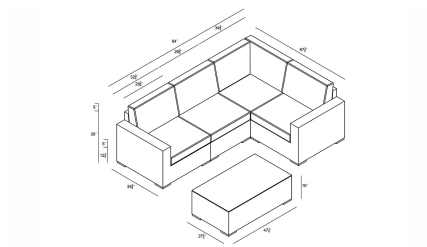


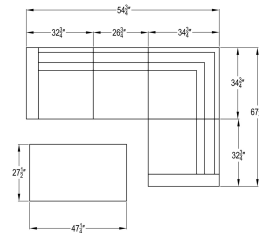
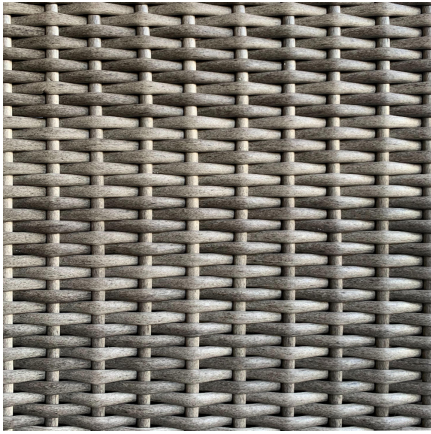


HARMONIA
LIVING

Dune 5 Piece Sectional Set - Canvas Charcoal HL-DUNE-DW-5SEC-CC

Product Images





Description

Bring comfort and elegance to your patio with the Dune 5 Piece Sectional Set by Harmonia Living. The Dune Collection features a clean, simple build that will add modern style to your outdoor lounging experience. This set's high arms, teak highlights and beautiful wicker give it a unique visual appeal, while sturdy, all-weather construction ensures lasting performance across the seasons. The wicker is made with durable High-Density Polyethylene (HDPE) and finished in a beautifully textured Driftwood color, which gives it a natural feel. Its sturdy aluminum frames, triple reinforced seats and fade resistant cushions are made to endure in any outdoor setting, rain or shine. The table is topped with extra strong tempered glass, a finishing touch that is ideal for frequent cleaning and use. If you wish to order this set through Harmonia Living's Quick Ship program, make sure to select a Quick Ship (QS) fabric before checkout! This set comes with 1 Middle Section, 1 Left Arm Section and 1 Right Arm Section, perfect for your patio or outdoor lounge.

Includes

- 1x Dune Corner Section
- 1x Dune Middle Section
- 1x Dune Left Arm Section
- 1x Dune Right Arm Section
- 1x Dune Coffee Table

Dimensions

- Corner Section: 34.75"W x 34.75"D x 32"H (35lbs.)
- Seat Height (No Cushion): 12.25
- Seat Height (With Cushion): 17.25
- Back Height (Seat to Top): 14.75
- Middle Section: 26.75"W x 34.75"D x 32"H (27lbs.)
- Seat Height (No Cushion): 12.25

- Seat Height (With Cushion): 17.25
- Back Height (Seat to Top): 14.75
- Left Arm Section: 32.75"W x 34.75"D x 32"H (33lbs.)
- Seat Height (No Cushion): 12.25
- Seat Height (With Cushion): 17.25
- Back Height (Seat to Top): 14.75
- Arm Height: 25
- Right Arm Section: 32.75"W x 34.75"D x 32"H (33lbs.)
- Seat Height (No Cushion): 12.25
- Seat Height (With Cushion): 17.25
- Back Height (Seat to Top): 14.75
- Arm Height: 25
- Coffee Table: 47.25"W x 27.5"D x 16"H (60lbs.)

Features

- Frame Finish: Driftwood
- Seat/Back Finish: Driftwood
- Table Finish: Driftwood
- Tabletop Finish: Clear
- Country Of Origin: Country of Origin: China
- Assembly Required:
- High-Density Polyethylene (HDPE) Wicker (Driftwood Finish) is all-weather, recyclable and resistant to fading or cracking.
- Thick gauge, powder-coated aluminum frames are lightweight, durable and corrosion resistant.
- Seat frames are triple reinforced for lasting durability.
- Includes teak wood feet with plastic glides to help protect your deck or patio.
- Tempered glass table top is extra strong and made for regular outdoor exposure.
- Cushions are made with quick-drying Polyurethane foam and wrapped in Dacron, which wicks away moisture
- Available in Sunbrella fabric, which is distinctive, fade resistant and easy to clean
- Set comes with U clips (for securing sectional pieces) & cushion ties (to keep cushions in place)

Compatible Cushions

- HL-CUSH-27B (3)
- HL-CUSH-27S (3)
- HL-CUSH-29B (1)
- HL-CUSH-29S (1)
- HL-CUSH-29W (1)

Compatible Furniture Covers

- HL-WX-GP-4SEC (1)
- HL-WX-GP-CT-REC (1)

Warranty

- 5 Years Fabric
- 3 Years Frame
- 2 Years Wicker

Care And Maintenance

Hose off or wipe clean with soft cloth and water. Do not use harsh chemicals. Teak will patina to a silvery grey if left untreated. To maintain the natural wood tone, teak cleaner and teak oil must be applied 1-2 times a year.

Available Color Options

- Canvas Charcoal: HL-DUNE-DW-5SEC-CC
- Canvas Flax: HL-DUNE-DW-5SEC-CF
- Cast Lagoon: HL-DUNE-DW-5SEC-CL
- Canvas Natural: HL-DUNE-DW-5SEC-CN
- Cast Silver: HL-DUNE-DW-5SEC-CS
- Heather Beige: HL-DUNE-DW-5SEC-HB
- Canvas Henna: HL-DUNE-DW-5SEC-HN
- Spectrum Indigo: HL-DUNE-DW-5SEC-IN
- Spectrum Peacock: HL-DUNE-DW-5SEC-PC