

NAPOLEON

ASCENT™ GAS FIREPLACES
napoleonfireplaces.com



A Fireplace Series with ENDLESS OPPORTUNITIES.

Fireplaces

Ascent™ 30.....	4 - 5
Ascent™ 35.....	6 - 7
Ascent™ 36.....	8 - 9
Ascent™ X 36.....	10 - 11
Ascent™ 42.....	12 - 13
Ascent™ 46.....	14 - 15
Ascent™ X 70.....	16 - 17
Ascent™ Multi-View.....	18 - 19
Ascent™ Series Media Kits.....	20 - 21
Napoleon's Outstanding Features.....	22 - 23
Detailed Specifications & Line Drawings.....	24 - 25



The Ascent™ 30 shown with the Heritage Front and MIRRO-FLAME™ Porcelain Reflective Radiant Panels.



FIND YOUR HAPPY (fire)PLACE.

Throughout the ages, people have gathered around fires to share in life's greatest joys.

There's just something about the glow of flickering flames that makes special moments feel even warmer.

A Napoleon fireplace is uniquely designed to brighten the vibe of any room in your house. Napoleon has an incredible range of designer options to fit any vision.

A fire not only raises the warmth and ambiance of a room, it can raise the value of your home. A fireplace offers some of the highest returns of any remodeling project. And that should make you feel good all over.

And so you can keep enjoying that positive glow for years and years and years to come, every Napoleon fireplace is backed by the President's Limited Lifetime Warranty.



Napoleon's Hot Spots Research Study delivers insights on key areas of the home. In particular, how to help you add relaxation, social interaction and functionality to rooms to enhance your memorable moments.

Throughout this brochure we will share some of our insights with you.

For more inspiration visit napoleonfireplaces.com/inspiration



We are proud to be recognized as one of Canada's Best Managed Companies and are dedicated to providing quality, home comfort products for over 40 years and counting.

Ascent™ 30

Direct Vent Fireplace

Napoleon's Ascent™ Series has endless opportunities and is perfect for home builders and homeowners alike. The Ascent™ 30 is the smallest fireplace in the series and is the perfect option when space is at a premium. With up to 15,000 BTU's and Napoleon's exclusive PHAZER® glowing log set, it provides plenty of cozy heat.

B30
Up to 15,000 BTU's
Top or Rear Vent
Flame/heat adjustment
30"w x 34 5/8"h
Natural gas or propane

For more detailed specifications on this unit, see page 26.

Options & Accessories



F45 & F60 Remote Controls
On/off with digital screen



Heritage Decorative Front



Zen Decorative Front



Black 2" Trim Kit



Black 3" Premium Bevelled Trim Kit





The Ascent™ 30 shown with 2" Trim Kit and MIRRO-FLAME™ Porcelain Reflective Radiant Panels



MIRRO-FLAME™
Porcelain Reflective
Radiant Panels



Complete with
Safety Barrier



Mix-N-Match Alternate Media Enhancement Kits
Shore Fire, Beach Fire and Mineral Rock Kit



Ascent™ 35

Direct Vent Fireplace

Napoleon's Ascent™ 35 enhances ambiance in any room with the industry's most realistic, exclusive PHAZER™ log set and glowing ember bed. The clean face design of the Ascent™ 35 maximizes optimal viewing to ensure your new fireplace is enjoyed to the fullest. With various accessories and an advanced burner technology, the Ascent™ 35 is compact, stylish and robust!

B35
Up to 20,000 BTU's
Top Vent
Flame/heat adjustment
35" w x 34 5/8" h
Natural gas or propane

For more detailed specifications on this unit, see page 26.

Options & Accessories



F45 & F60 Remote Controls
On/off with digital screen



Clean Face Decorative Front shown with Sandstone Brick Panels



Heritage Decorative Front shown with MIRRO-FLAME™ Porcelain Reflective Radiant Panels



Wrought Iron Decorative Front shown with MIRRO-FLAME™ Porcelain Reflective Radiant Panels



Zen Decorative Front shown with Herringbone Brick Panels



Black 2" Trim Kit shown with Sandstone Brick Panels



Black 3" Premium Bevelled Trim Kit shown with MIRRO-FLAME™ Porcelain Reflective Radiant Panels





The Ascent™ 35 shown with MIRRO-FLAME™ Porcelain Reflective Radiant Panels



Herringbone
Decorative Brick
Panels



Sandstone
Decorative Brick
Panels



MIRRO-FLAME™
Porcelain Reflective
Radiant Panels



Complete with
Safety Barrier



Ascent™ 36

Direct Vent Fireplace

Napoleon's Ascent™ 36 is so versatile it can be installed almost anywhere! The shallow depth, at less than 16", allows for installations where space is limited. The clean face design maximizes the viewing area so your new pride and joy is thoroughly enjoyed.

B36
Up to 18,000 BTU's
Top or Rear Vent
Flame/heat adjustment
35" w x 34 5/8" h
Natural gas or propane

For more detailed specifications on this unit, see page 26.

Options & Accessories



F45 & F60 Remote Controls
On/off with digital screen



Clean Face Decorative Front shown with MIRRO-FLAME™ Porcelain Reflective Radiant Panels



Heritage Decorative Front shown with MIRRO-FLAME™ Porcelain Reflective Radiant Panels



Wrought Iron Decorative Front shown with MIRRO-FLAME™ Porcelain Reflective Radiant Panels



Zen Decorative Front shown with MIRRO-FLAME™ Porcelain Reflective Radiant Panels



Black 2" Trim Kit shown with MIRRO-FLAME™ Porcelain Reflective Radiant Panels



Black 3" Premium Bevelled Trim Kit shown with MIRRO-FLAME™ Porcelain Reflective Radiant Panels





The Ascent™ 36 shown with MIRRO-FLAME™ Porcelain Reflective Radiant Panels



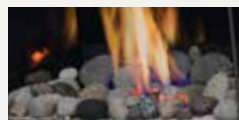
MIRRO-FLAME™
Porcelain Reflective
Radiant Panels



Complete with
Safety Barrier



Mix-N-Match Alternate Media Enhancement Kits
Shore Fire, Beach Fire and Mineral Rock Kit



Ascent™ X 36

A Multitude of Designer Options

Napoleon's Ascent™ X 36 allows you to transform any space into an inviting and relaxing retreat! With a multitude of designer options you can match existing decor or create an eye catching focal point. The Ascent™ X 36 boasts the industries most realistic, exclusive PHAZER® log set and glowing ember bed.

GX36

Up to 26,000 BTU's

Top or Rear Vent

Ceramic Glass

Flame/heat adjustment

35" w x 34 5/8" h

Natural gas or propane

For more detailed specifications on this unit, see page 26.



Napoleon's Hot Spots Research Study revealed how desire for a fireplace, when shown in a master bedroom, increases by **75%**.

Options & Accessories



F45 & F60 Remote Controls
On/off with digital screen



Clean Face Decorative Front shown with Sandstone Brick Panels



Scalloped Wrought Iron Decorative Front shown with Newport™ Decorative Brick Panels



Wrought Iron Decorative Front shown with Herringbone Brick Panels



Zen Decorative Front shown with MIRRO-FLAME™ Porcelain Reflective Radiant Panels



Black 2" Trim Kit shown with Sandstone Brick Panels

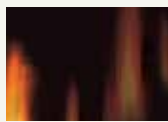


Black 3" Premium Bevelled Trim Kit shown with Newport™ Decorative Brick Panels





The Ascent™ X 36 shown with MIRRO-FLAME™ Porcelain Reflective Radiant Panels



MIRRO-FLAME™
Porcelain Reflective
Radiant Panels



Herringbone
Decorative Brick
Panels



Sandstone
Decorative Brick
Panels



Newport™ Decorative
Brick Panels



Complete with
Safety Barrier



Mix-N-Match Alternate Media Enhancement Kits
Shore Fire, Beach Fire and Mineral Rock Kit



Ascent™ 42

Direct Vent Fireplaces

The Napoleon Ascent™ 42 Gas Fireplace offers a multitude of options with decorative fronts, trim kits, decorative brick panels and MIRRO-FLAME™ Porcelain Reflective Radiant Panels. The Ascent™ 42 can be designed to your personal taste and can match any home décor. An approved safety barrier is included on the Ascent™ series, meeting current safety standards.

B42

Up to 22,000 BTU's

Top or Rear Vent

Flame/heat adjustment

42" w x 34 5/8" h

Natural gas or propane

For more detailed specifications on this unit, see page 27.

Options & Accessories



F45 & F60 Remote Controls
On/off with digital screen



Wrought Iron Front shown with MIRRO-FLAME™ Porcelain Reflective Radiant Panels



Decorative Heritage Front shown with Herringbone Brick Panels



Decorative Zen Front shown with MIRRO-FLAME™ Porcelain Reflective Radiant Panels



Black 3" Premium Bevelled Trim Kit shown with Sandstone Brick Panels

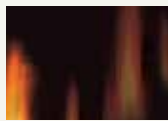


Standard Black Front shown with MIRRO-FLAME™ Porcelain Reflective Radiant Panels





The Ascent™ 42 shown with Standard Black Front and MIRRO-FLAME™ Porcelain Reflective Radiant Panels



MIRRO-FLAME™
Porcelain Reflective
Radiant Panels



Herringbone
Decorative Brick
Panels



Sandstone
Decorative Brick
Panels



Complete with
Safety Barrier



Mix-N-Match Alternate Media Enhancement Kits
Shore Fire, Beach Fire and Mineral Rock Kit



Ascent™ 46

Direct Vent Fireplaces

Napoleon's Ascent™ 46 is now the largest single view fireplace in the Ascent™ Series and is offered as a 4" x 7" top and rear vent model. Offering a multitude of options with decorative fronts, trim kits, decorative brick panels and MIRRO-FLAME™ Porcelain Reflective Radiant Panels, the Ascent™ 46 can be designed to your personal taste and match any home décor.

B46

Up to 22,000 BTU's

Top or Rear Vent

Flame/heat adjustment

46"w x 34 5/8"h

Natural gas or propane

For more detailed specifications on this unit, see page 27.

Options & Accessories



F45 & F60 Remote Controls
On/off with digital screen



Decorative Heritage Front shown with MIRRO-FLAME™ Porcelain Reflective Radiant Panels



Decorative Zen Front shown with Sandstone Brick Panels



Standard Black Front shown with MIRRO-FLAME™ Porcelain Reflective Radiant Panels





The Ascent™ 46 shown with MIRRO-FLAME™ Porcelain Reflective Radiant Panels



MIRRO-FLAME™
Porcelain Reflective
Radiant Panels



Sandstone
Decorative Brick
Panels



Complete with
Safety Barrier



Mix-N-Match Alternate Media Enhancement Kits
Shore Fire, Beach Fire and Mineral Rock Kit



Ascent™ X 70

Direct Vent Fireplace

The Ascent™ X 70 gas fireplace offers you a wide range of heat output and control with a remarkable flame/heat adjustment. The Ascent™ X 70 boasts one of the most impressively solid towering flames that produce a remarkable presence that can not be ignored. With a large viewing area, a realistic PHAZER™ log set that is rich in color and detail and Napoleon's exclusive NIGHT LIGHT™, the Ascent™ X 70 is a one of a kind fireplace that you will be proud to have friends and family gather around.

GX70

Up to 35,000 BTU's

Top Vent

Flame/heat adjustment

35"w x 34 5/8"h

Natural gas or propane

For more detailed specifications on this unit, see page 27.

Options & Accessories



Modulating Remote Control with Digital Screen Comes Complete with Ascent™ X 70



Heritage Decorative Front shown with Old Town Red Decorative Brick Panels



Black Front with Operable Screen shown with Herringbone Decorative Brick Panels



Zen Decorative Front shown with MIRRO-FLAME™ Porcelain Reflective Radiant Panels



Scalloped Wrought Iron Decorative Front shown with Newport™ Decorative Brick Panels



Black 2" Trim Kit shown with Old Town Red Decorative Brick Panels



2" Trim Kit shown with MIRRO-FLAME™ Porcelain Reflective Radiant Panels



Clean Face Decorative Front shown with Newport™ Decorative Brick Panels



Wrought Iron Decorative Front shown with Old Town Red Decorative Brick Panels





Ascent™ X 70 shown with Black Front with Operable Screen and Newport™ Brick Panels.



MIRRO-FLAME™
Porcelain Reflective
Radiant Panels



Herringbone
Decorative Brick
Panels



Old Town Red
Decorative Brick
Panels



Newport™
Decorative Brick
Panels



Complete with
Safety Barrier



Ascent™ Multi-View

Direct Vent Fireplace

Napoleon's Ascent™ Multi-View Gas Fireplace is available as a See Thru or a three-sided Peninsula and features various firebox/burner options including a log burner, a linear glass burner or a designer fire cradle featuring topaz glass to match any room in your home. The new Ascent™ Multi-View Gas Fireplace offers up to 30,000 BTU's, a massive 2,023 sq. in. viewing area for the See-Thru model and 2,484 sq. in. for the Peninsula model, multiple firebox configurations and electronic ignition with battery back-up. Media kits and decorative panels are available to match any room in your home.

BHD4ST - See Thru

Up to 30,000 BTU's

45° Vent

Flame/heat adjustment

45"w x 38 1/4"h

Natural Gas or propane

BHD4P - Peninsula

Up to 30,000 BTU's

45° Vent

Flame/heat adjustment

43 1/4"w x 38 1/4"h

Natural Gas or propane

For more detailed specifications on this unit, see page 27.



Napoleon's Hot Spots Research Study divulges how over **90%** of people surveyed strongly desire a fireplace in the family / living room.

Options & Accessories



Designer Fire Art
Metal Coil Design



Designer Fire Art
Nickel Stix Design



F45 & F60 Remote Controls
On/off with digital screen



Modulating Remote Control
with Digital Screen



Ascent™ Multi-View Peninsula with PHAZER™ Log Set Burner (BHD4PN) shown with MIRRO-FLAME™ Porcelain Reflective Radiant Panels



Ascent™ Multi-View See Thru with Fire Cradle Media Burner (BHD4STFCN) shown with MIRRO-FLAME™ Porcelain Reflective Radiant Panels



Ascent™ Multi-View See Thru with Topaz CRYSTALINE™ glass ember bed Burner (BHD4STGN) shown with MIRRO-FLAME™ Porcelain Reflective Radiant Panels





Ascent™ Multi-View shown with Topaz CRYSTALLINE™ glass ember bed and MIRRO-FLAME™ Porcelain Panels



Ascent™ Multi-View shown with PHAZER™ log set burner and Newport Decorative Brick Panels



Newport™ Decorative Brick Panels
Available only with Log Set Burner



MIRRO-FLAME™ Porcelain Reflective Radiant Panels



Complete with Safety Barrier



Alternate Glass Media Kits & Glass Enhancement Kits
Six Colors Available



Mineral Rock Kit Available



Enhance Your Ember Bed

Napoleon Fireplaces is officially announcing it's lineup of new, completely customizable, media enhancement kits. The three kits are; the Beach Fire kit that consists of 4 driftwood logs, a Shore Fire kit that consists of rock, sand, vermiculite, glass and rock tray and a Mineral Rock kit that consists of rocks in a variety of shapes, sizes and colors. These kits can be used as stand alone media or you can pick and choose elements from all 3 kits to be mix & matched to create a custom look. Completely customize your fireplace to your exact tastes!



Beach Fire kit (DLE)

Comes with four driftwood logs

The Beach Fire kit includes four pieces of driftwood styled logs. This can be used with the B30, B36, GX36, B42 & B46.



Shore Fire kit (MKE)

Comes with a variety of Rock, Sand, Vermiculite, Glass and rock tray

The Shore Fire kit includes a well balanced mixture of rocks, sand, vermiculite, glass and rock tray and is available in 3 sizes. The MKE30 for use with the B30, the MKE36 for use with the B36 and GX36 plus the MKE42 for use with the B42 and B46.



Mineral Rock kit (REK)

Comes with rocks in a variety of shapes, sizes and colors

The Mineral Rock kit is a mixture of different sized rocks in black, red, blue and grey. This can be used with the B30, B36, GX36, B42, B46 & BHD4.

Media Kits	Ascent Series Fireplaces							
	B30	B35	B36	GX36	B42	B46	BHD4	GX70
Shore Fire	MKE30	N / A	MKE36	MKE36	MKE42	MKE42	N / A	N / A
Beach Fire	Product code for ALL Ascent™ Series Fireplaces: DLE (N/A for B35, BHD4 or GX70)							
Mineral Rocks	Product code for ALL Ascent™ Series Fireplaces: REK (N/A for B35 or GX70)							

Just some of the ways to customize your fireplace media...



Shore Fire kit with glass media removed



Shore Fire kit with sand and vermiculite removed



Shore Fire and Beach Fire kits with glass media removed



Shore Fire kit with Mineral Rock kit excluding the glass media



Beach Fire kit and Shore Fire kit with rocks and glass media removed



All three kits with glass media removed



Beach Fire kit and Shore Fire kit with sand and vermiculite removed



All three kits used excluding the glass media

Features and Accessories

- Back-up control system ensures reliable use, even during power failures
- **CRYSTALINE™** glass ember bed or **PHAZER™** log set options available
- Optional **MIRRO-FLAME™** Porcelain Reflective Radiant Panels
- Optional brick kits in Sandstone, Old Town Red, Newport™ or Herringbone
- Optional glass ember media kits in black, blue, red, amber, clear and topaz to replace or add to the CRYSTALINE™ ember bed
- Choose from a variety of decorative fronts complete with screen
- Optional Driftwood Log, Shore Fire, Beach Fire and Mineral Rock enhancement kits available
- Optional **AMBIENT-GLOW™** metal fibers are designed to enhance the glowing embers on gas fires





	B30	B35	B36	GX36	B42	B46	GX70	BHD4P/ST	BHD4PG/STG	BHD4PFC	BHD4STFC
Heritage Decorative Front	0	0	0	0	0	0	0	-	-	-	-
Zen Decorative Front	0	0	0	0	0	0	0	-	-	-	-
2" Trim Kit	0	0	0	0	0	-	0	-	-	-	-
3" Premium Bevelled Trim Kit	0	0	0	0	0	0	0	-	-	-	-
Clean Face Decorative Front	-	0	0	0	-	-	0	-	-	-	-
Wrought Iron Decorative Front	-	0	0	0	0	-	0	-	-	-	-
Scalloped Wrought Iron Decorative Front	-	-	-	-	-	-	0	-	-	-	-
Front with Operable Screen	-	-	-	-	-	-	0	-	-	-	-
Sandstone Decorative Brick Panels	-	0	-	0	0	0	-	-	-	-	-
Herringbone Decorative Brick Panels	-	0	-	0	0	-	0	-	-	-	-
Newport™ Deluxe Decorative Brick Panels	-	-	-	0	-	-	0	0	0	0	0
Old Town Red Decorative Brick Panels	-	-	-	-	-	-	0	-	-	-	-
MIRRO-FLAME™ Porcelain Reflective Radiant Panels	0	0	0	0	0	0	0	0	0	0	0
PHAZER® Log Set	S	S	S	S	S	S	S	S	-	-	-
Glowing Embers	-	S	S	S	S	S	S	-	-	-	-
Glass Ember Bed	-	-	-	-	-	-	-	-	S	S	S
Glass Ember Media Kits (6 Color Options Available)	-	-	-	-	-	-	-	-	0	0	0
Beach Fire Media Enhancement Kit	0	-	0	0	0	0	-	-	-	-	-
Shore Fire Media Enhancement Kit	0	-	0	0	0	0	-	-	-	-	-
Mineral Rock Media Enhancement Kit	0	-	0	0	0	0	-	-	-	0	0
Designer Fire Art - Metal Coil	-	-	-	-	-	-	-	-	0	-	-
Designer Fire Art - Nickel Stix	-	-	-	-	-	-	-	-	0	-	-
On/off Remote Control with Digital Screen	0	0	0	0	0	0	-	0	0	0	0
Modulating Remote Control with Digital Screen	-	-	-	-	-	-	S	0	0	0	0
Blower Kit with Variable Speed and Thermostatic Control	0	0	0	0	0	0	S	-	-	-	-
Flame/Heat Adjustment	S	S	S	S	S	S	S	-	-	-	-
Safety Barrier Approved Safety Screen	S	S	S	S	S	S	S	S	S	S	S
Pre-wired for Wall Switch	S	S	S	S	S	S	-	-	-	-	-

S - Standard 0 - Optional

Outstanding Features

of Napoleon's Advanced Technology



Advanced Burner Technology

Napoleon's sophisticated burner system offers superior flame technology. Strategically placed burner ports create the most realistic YELLOW DANCING FLAMES[®] in the industry.

Finely Tuned Precision Valves

Surrounded with a protective cast aluminum jacket, the precision valves allow for ultimate reliability and 100% SAFE GUARD[™] gas control system.

Minimum 30% savings on heating costs with Zone Heating

Zone Heating means you are heating the rooms that you use the most with an alternate heat source, like a Napoleon gas fireplace. Zone Heating is the obvious solution for families concerned about rising fuel costs.

Outstanding Craftsmanship

Fine details are designed in every aspect of Napoleon fireplaces... individually handcrafted with pride of excellence to last a lifetime.

Safety Screens

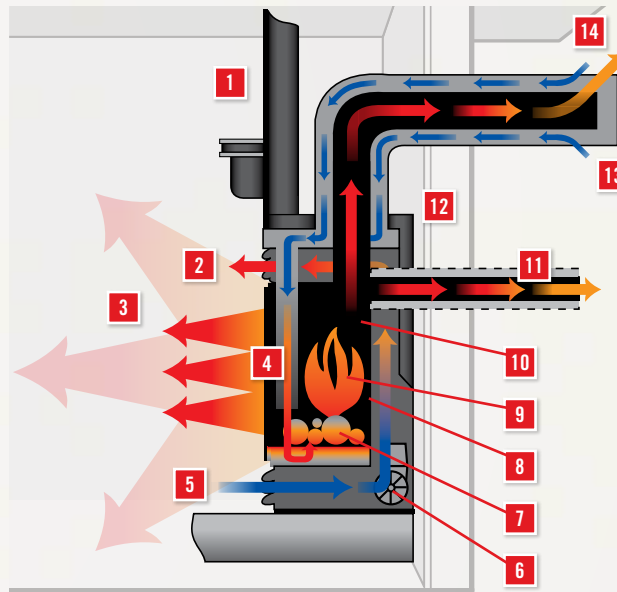
Napoleon, leaders in design & technology have developed safety screens with aesthetically pleasing designs for every gas appliance to ensure ultimate safety and peace of mind for your family.

Outstanding Features

of Napoleon's Direct Vent Technology

Direct Vent System

1. Zero clearance to combustible framing*
2. Forced convection heated room air
3. Radiant heat
4. High Heat Ceramic or Tempered Glass increases the radiant heat that is dispersed throughout the room. Save up to 30% on energy costs with radiant heat and Zone Heating
5. Cool room air is naturally drawn through the lower opening, circulates around the firebox, and expels into the living space as warm air
6. Optional air circulating variable speed blower with high temperature bearings increases efficient heating
7. Advanced ceramic burner system (selected models)
8. MIRRO-FLAME™ Porcelain Reflective Radiant Panels further increase radiant heat (optional on most models)
9. Advanced burner technology produces the most realistic flames in the industry
10. Sealed combustion chamber
11. Optional rear exhaust (selected models)



12. Efficient heat exchange system
13. Combustion air inlet
14. Flue gas outlet

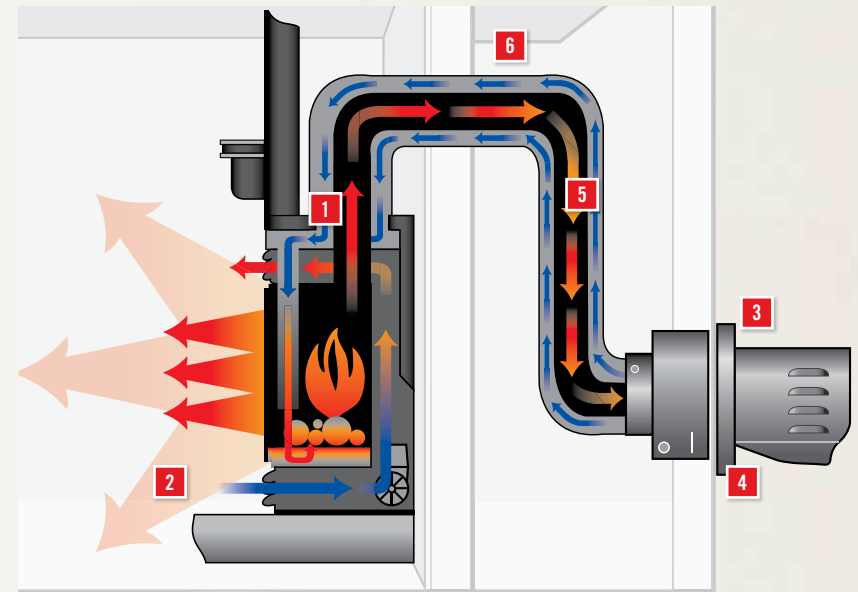
With over 40 years of research and development, Napoleon has perfected direct vent technology to offer you a fireplace, stove or insert that easily fits into your lifestyle.

With Napoleon's direct vent technology, you can design and install your fireplace in unique locations where it wasn't possible before with traditional masonry fireplaces. Even your basement can be transformed into a warm, inviting oasis for your family and friends to enjoy.

Whether you are renovating, building or replacing an inefficient fireplace product, Napoleon helps guide you in the right direction to find the product that's right for you and your home. Napoleon Fireplaces are a smart investment that will bring many years of affordable luxury to you and your family.

*See installation manual for details

Direct Vent Power Venting System



1. Suitable for exhaust products with various vent diameters
2. Installation friendly maintenance free durable construction
3. Blower mounted outside at terminal with WHISPER QUIET™ operation inside
4. Terminates above or below the fireplace to allow more freedom and versatility for direct vent installations
5. No hoses to terminal
6. Ability to "snake" either up, down or around objects (ie; behind stairways)

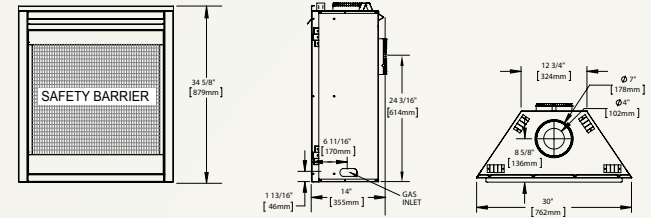
Napoleon's power venting system allows more freedom and versatility for direct vent installations. The option of having the termination above or below the fireplace, along with the ability to "snake" either up or down, allows installation when the desired fireplace location is a great distance away from an outside wall. The blower that pulls the burned gases from the fireplace is mounted outside at the terminal which provides WHISPER QUIET™ operation inside the home.

Available for Select Models

Ascent™ 30

Shown on pages 4 - 5

*Fronts/Surrounds may change unit dimensions

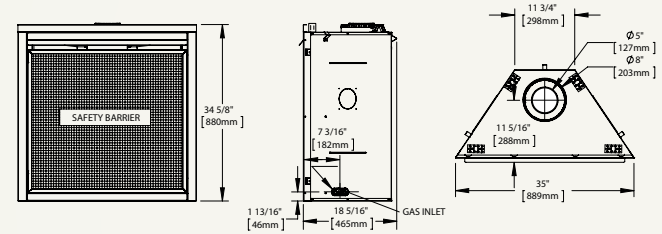


Model	BTU's (Input)		Venting 4" x 7"	Height		Front Width		Depth		Glass Type	Glass Size		Glass Area (sq. in.)	Efficiencies		Blower	Mobile Home Certified
	Natural Gas	Propane		Actual	Framing	Actual	Framing	Actual	Framing		Height	Width		EnerGuide	AFUE		
B30	15,000	15,000	Top / Rear	30"	30 1/2"	34 5/8"	35"	14"	14 1/2"	Tempered	23 11/16"	25 11/16"	609	68.9 %	72.5 %	Optional	Yes

Ascent™ 35

Shown on pages 6 - 7

*Fronts/Surrounds may change unit dimensions

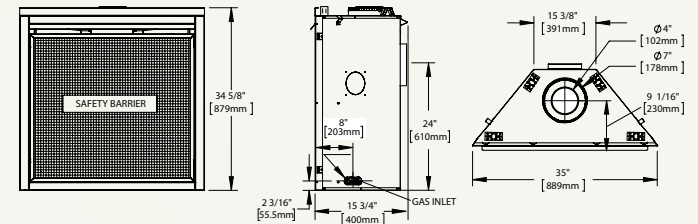


Model	BTU's (Input)		Venting 5" x 8"	Height		Front Width		Depth		Glass Type	Glass Size		Glass Area (sq. in.)	Efficiencies		Blower	Mobile Home Certified
	Natural Gas	Propane		Actual	Framing	Actual	Framing	Actual	Framing		Height	Width		EnerGuide	AFUE		
B35	20,000	20,000	Top	34 5/8"	35"	35"	35 1/2"	18 5/16"	18 9/16"	Tempered	23 11/16"	30 11/16"	727	56.4 %	63.5 %	Optional	Yes

Ascent™ 36

Shown on pages 8 - 9

*Fronts/Surrounds may change unit dimensions

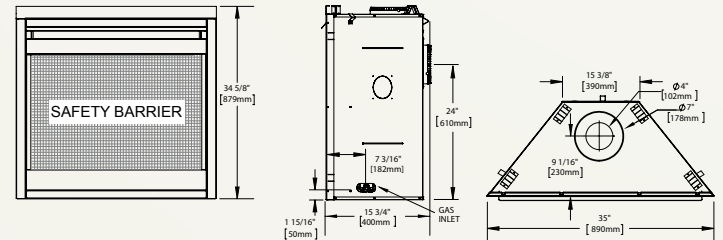


Model	BTU's (Input)		Venting 4" x 7"	Height		Front Width		Depth		Glass Type	Glass Size		Glass Area (sq. in.)	Efficiencies		Blower	Mobile Home Certified
	Natural Gas	Propane		Actual	Framing	Actual	Framing	Actual	Framing		Height	Width		EnerGuide	AFUE		
B36	18,000	15,000	Top / Rear	34 5/8"	35"	35"	35 1/2"	15 3/4"	16"	Tempered	23 11/16"	30 11/16"	727	75.4 %	76.3 %	Optional	Yes

Ascent™ X 36

Shown on pages 10 - 11

*Fronts/Surrounds may change unit dimensions

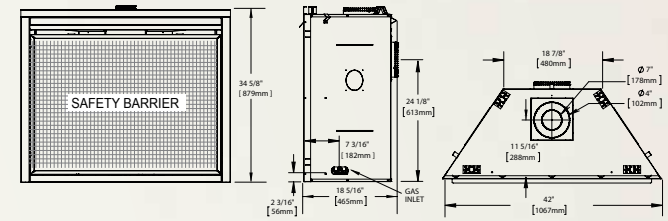


Model	BTU's (Input)		Venting 4" x 7"	Height		Front Width		Depth		Glass Type	Glass Size		Glass Area (sq. in.)	Efficiencies		Blower	Mobile Home Certified
	Natural Gas	Propane		Actual	Framing	Actual	Framing	Actual	Framing		Height	Width		EnerGuide	AFUE		
GX36	26,000	26,000	Top / Rear	34 5/8"	35"	35"	35 1/2"	15 3/4"	16"	Ceramic	23 11/16"	30 11/16"	727	70.1 %	73.8 %	Optional	Yes

Ascent™ 42

Shown on pages 12 - 13

*Fronts/Surrounds may change unit dimensions

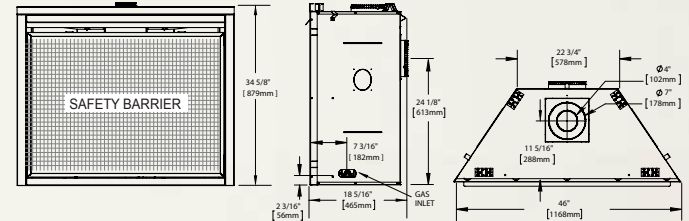


Model	BTU's (Input)		Venting 4" x 7"	Height		Front Width		Depth		Glass Type	Glass Size		Glass Area (sq. in.)	Efficiencies		Blower	Mobile Home Certified
	Natural Gas	Propane		Actual	Framing	Actual	Framing	Actual	Framing		Height	Width		EnerGuide	AFUE		
B42	22,000	22,000	Top / Rear	34 5/8"	35"	42"	42 1/2"	18 5/16"	18 9/16"	Tempered	23 11/16"	37 11/16"	893	73.3%	N/A	Optional	Yes

Ascent™ 46

Shown on pages 14- 15

*Fronts/Surrounds may change unit dimensions

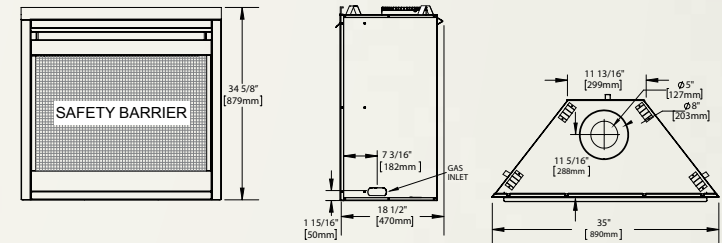


Model	BTU's (Input)		Venting 4" x 7"	Height		Front Width		Depth		Glass Type	Glass Size		Glass Area (sq. in.)	Efficiencies		Blower	Mobile Home Certified
	Natural Gas	Propane		Actual	Framing	Actual	Framing	Actual	Framing		Height	Width		EnerGuide	AFUE		
B46	22,000	22,000	Top / Rear	34 5/8"	35"	46"	46 1/2"	18 5/16"	18 9/16"	Tempered	23 11/16"	41 11/16"	988	73.3%	N/A	Optional	Yes

Ascent™ X 70

Shown on pages 16 - 17

*Fronts/Surrounds may change unit dimensions

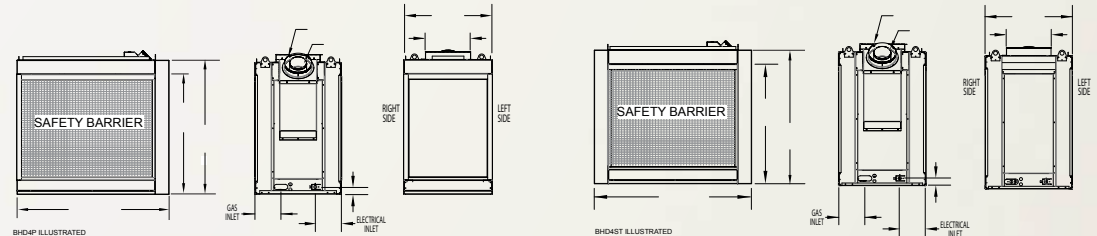


Model	BTU's (Input)		Venting 5" x 8"	Height		Front Width		Depth		Glass Type	Glass Size		Glass Area (sq. in.)	Efficiencies		Blower	Mobile Home Certified
	Natural Gas	Propane		Actual	Framing	Actual	Framing	Actual	Framing		Height	Width		EnerGuide	AFUE		
GX70	35,000	35,000	Top	34 5/8"	35"	35"	35 1/2"	18 1/2"	19"	Ceramic	23 11/16"	30 11/16"	727	75 %	N/A	Included	Yes

Ascent™ Multi View

Shown on pages 18 - 19

*Fronts/Surrounds may change unit dimensions



Model	BTU's (Input)		Venting 5" x 8"	Height		Front Width			Depth			Glass Type	Glass Size (Face)		Glass Size (End)		Glass Area (sq. in.)	Efficiencies		Blower	Mobile Home Certified
	Natural Gas	Propane		Actual	Framing	Actual	Min. Framing	Max. Framing	Actual	Min. Framing	Max. Framing		Height	Width	Height	Width		EnerGuide	AFUE		
BHD4ST	30,000	30,000	45°	38 1/4"	46 1/2"	45"	45 1/2"	45 1/2"	25 1/8"	22 5/8"	24 5/8"	Tempered	28 1/2"	35 1/2"	N/A	N/A	2024	67.9 %	66.98 %	N/A	Yes
BHD4P	30,000	30,000	45°	38 1/4"	46 1/2"	43 1/4"	42 1/2"	43 1/2"	25 1/8"	22 5/8"	24 5/8"	Tempered	28 1/2"	35 1/2"	27 1/8"	17"	2485	67.9 %	66.98 %	N/A	Yes



NAPOLEON - CELEBRATING OVER 40 YEARS OF HOME COMFORT PRODUCTS

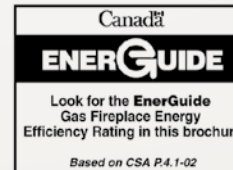


24 Napoleon Road, Barrie, Ontario, Canada L4M 0G8
103 Miller Drive, Crittenden, Kentucky, USA 41030
7200 Trans Canada Highway, Montreal, Quebec, Canada H4T 1A3

Tel: 705-721-1212 Fax: 705-722-6031
napoleonfireplaces.com



Authorized Dealer



Consult your owner's manual for complete installation instructions and proper clearances to combustible materials. Check all local and national building codes and gas regulations. All specifications are subject to change without prior notice due to on-going product improvements. Products may not be exactly as shown. Flame height and activity is influenced by varying vent configurations and may not appear as shown. Napoleon® is a registered trademark of Wolf Steel Ltd. © Wolf Steel Ltd. EnerGuide - A Canadian efficiency standard based on frequent, short start-up and cool-down cycles. All appliances sold in Canada are subject to this EnerGuide rating system. AFUE - A US efficiency standard (Department of Energy) based on extended on/off cycles, more typical of fireplace usage. Steady State - Reflects the highest possible overall heating efficiency.