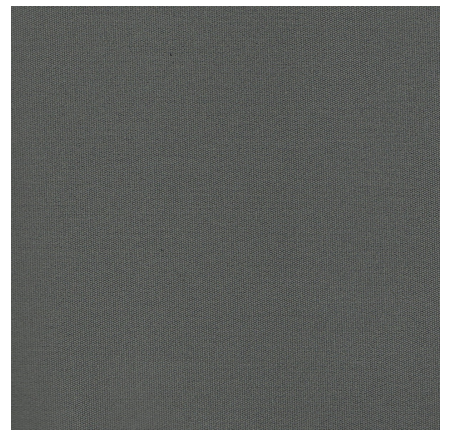


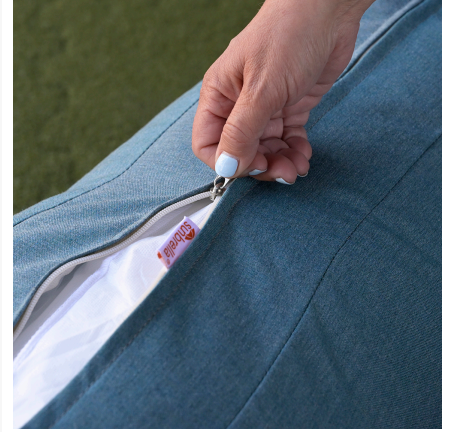
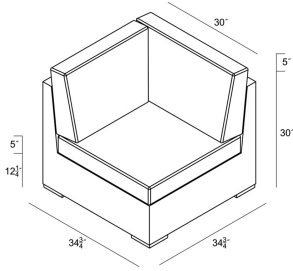


HARMONIA
LIVING

Arden Corner Section - Canvas Charcoal HL-ARD-CH-CS-CC

Product Images





Description

The Arden Corner Section by Harmonia Living brings a cozy, rustic appeal to modern outdoor dining furniture. This collection's modern style, beautiful wicker and extra-plush cushions give it a unique visual appeal, while sturdy, all-weather construction ensures lasting performance across the seasons. The wicker is made with durable High-Density Polyethylene (HDPE) and finished in a beautifully textured Chesnut color, which gives it a natural feel. Its sturdy aluminum frame, triple reinforced seat and fade resistant cushions are made to endure in any outdoor setting, rain or shine. This corner chair is designed to be used with the other coordinating Arden Sectional seating pieces. If you wish to order this piece through Harmonia Living's Quick Ship program, make sure to select a Quick Ship (QS) fabric before checkout! All cushions are made in the USA from Sunbrella, Outdura, and Revolution performance fabrics which carry a 5 year fade warranty.

Includes

- 1x Arden Corner Section
- 1x 29" Single Seat Cushion
- 1x 29" Single Seat Back Cushion
- 1x Wedge Cushion

Dimensions

- Corner Section: 34.75"W x 34.75"D x 32"H (35lbs.)
- Seat Height (No Cushion): 12.25
- Seat Height (With Cushion): 17.25
- Back Height (Seat to Top): 14.75

Features

- High-Density Polyethylene (HDPE) Wicker (Chestnut Finish) is all-weather, recyclable and resistant to fading or cracking.
- Thick gauge, powder-coated aluminum frame is lightweight, durable and corrosion resistant.
- Seat frame is triple reinforced for lasting durability.
- Includes teak wood feet with plastic glides to help protect your deck or patio.
- Cushions are made in the USA with quick-drying Polyurethane foam and wrapped in Dacron, which wicks away moisture.
- Available in Sunbrella, Outdura and Revolution performance fabrics, which are distinctive, fade resistant and easy to clean.
- Cushion cover comes with a zipper for easy removal.
- A self-welt (seam piping) can be added for a tailored look.
- No assembly required.