

Gullwing Bed Rack - Rear Door Installation Instructions

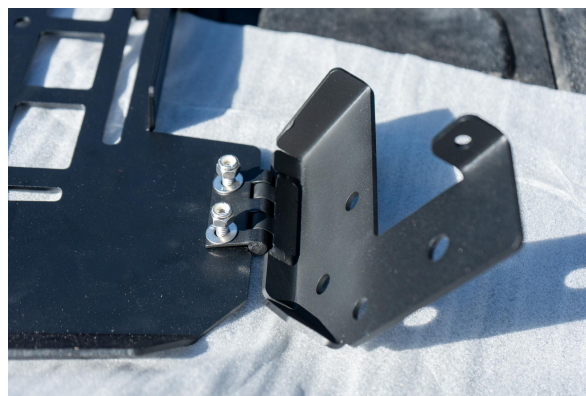
- Provided Hardware:
 - (1) Rear Door
 - (1) Driver Side Mounting Hinge
 - (1) Passenger Side Mounting Hinge
 - (2) Lockout Hinges
 - (4) Hinge L Brackets
 - (2) L Brackets
 - (4) $\frac{1}{4}$ - 20 x $\frac{5}{8}$ Hex Head Bolts
 - (4) $\frac{1}{4}$ " Black Plastic Washers
 - (16) $\frac{1}{4}$ " Stainless Steel Washers
 - (18) $\frac{1}{4}$ - 20 Nylon Nuts
 - (2) $\frac{1}{4}$ - 20 x 1 $\frac{1}{2}$ " Hex Head Bolts
 - (2) Large Rubber Washers
 - (2) #10 - 32 Allen Key Bolts
 - (2) Acorn Nuts
- Installation Instructions:
- First, we are going to start with preassembly.



- Mount the (2) Lockout Hinges using (1) $\frac{1}{4}$ - 20 x 1 $\frac{1}{2}$ " Hex Head Bolt, (2) Black Plastic Washers, (1) $\frac{1}{4}$ - 20 Nylon Nut, and (2) Hinge L Brackets for each lockout. Once assembled as the picture shown, use (2) $\frac{1}{4}$ - 20 x $\frac{5}{8}$ Hex Head Bolts, (2) $\frac{1}{4}$ " Stainless Steel Washers, and (2) $\frac{1}{4}$ - 20 Nylon Nuts to mount each lockout to the door.
- Start by mounting both the Driver Side Mounting Hinge and the Passenger Side Mounting hinge to the top corners of the Bed Rack.



- You will use the (2) $\frac{1}{4}$ - 20 x $\frac{5}{8}$ Hex Head Bolts and the (2) $\frac{1}{4}$ " Stainless Steel Washers already mounted on the Bed Rack as shown.



- To mount the Rear Door to the Driver Side Mounting Hinge and the Passenger Side Mounting Hinge, you will use (2) $\frac{1}{4}$ - 20 Nylon Nuts and (2) $\frac{1}{4}$ " Stainless Steel Washers, threading them onto the threaded studs on the Rear Door on each side.



- To mount the opposite end of the Lockouts to the Mounting Hinges, slide the threaded stud on the end of the lockout through the open of the Mounting Hinge. Then use (1) $\frac{1}{4}$ " Stainless Steel Washer and (1) $\frac{1}{4}$ - 20 Nylon Nut on each lockout to mount it. Do not overtighten



- To mount both of the L Brackets to the Rear Door, you will need to use (2) $\frac{1}{4}$ - 20 Nylon Nuts and (2) $\frac{1}{4}$ " Stainless Steel Washers. Slide the L Bracket slots through

the threaded studs on the Rear Door then tighten down using listed hardware. Do not overtighten.

- To mount the Large Rubber Washer to the L Bracket, you will need to use (1) #10 - 32 Allen Key Bolt, (1) ¼" Stainless Steel Washer, and (1) Acorn Nut for each L Bracket on the Rear Door. Adjust for best fitment and do not overtighten.

For any questions!

Contact - info@trailrax.com

Follow us social media:

Instagram & Facebook - trailrax

Youtube - youtube.com/TrailRax

Tag us on social media!