



THE TRMR RACK

BRONCO 2 DOOR HALF RACK INSTRUCTIONS GUIDE

HARDWARE LIST



Do not install by yourself! Have a second pair of hands to assist with the installation.

DS = DRIVER SIDE / PS = PASSENGER SIDE



(1)- WIND DEFLECTOR PLATE



(5)- ALUMINUM EXTRUSION



(1)- DS FRONT
OUTER CLAMP
(2FB-HR-5)



(1)- DS REAR
OUTER CLAMP
(2FB-1)



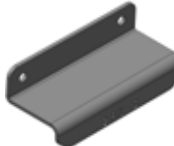
(1)- PS REAR
OUTER CLAMP
(2FB-2)



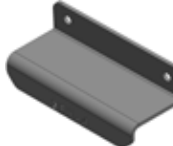
(1)- PS FRONT
OUTER CLAMP
(2FB-HR-6)



(1)- DS FRONT
INNER CLAMP
(2FB-HR-3)



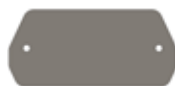
(1)- DS REAR
INNER CLAMP
(2FB-3)



(1)- PS REAR
INNER CLAMP
(2FB-4)



(1)- PS FRONT
INNER CLAMP
(2FB-HR-4)



(2)- LOGO PLATE



(4)- 4"x4" OUTER
CLAMP GASKET



(4)- 2.5"x4" INNER
CLAMP GASKET



(1)- TUBE OF
LOCTITE

(8)

1/4"-20 X 1"



(4)

5-40 X 1/2"



(20)

1/4"-20 X 3/4"



(4)

5-40 NUT



(10)

1/4"-20 X 1/2"



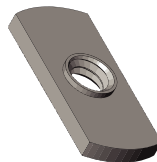
(8)

1/4"-20
NYLON NUT



(10)

1/4"-20
T-NUT



(38)

1/4" ID
WASHER



TORQUE SPECS

KEEP IN MIND, THE AVERAGE TORQUE SPECS OF A 1/4"-20 BOLT IS 75 INCH POUNDS WHICH EQUALS 6.25 FOOT POUNDS. THE HEAD OF THE BOLT SHEARS AT 15 FOOT POUNDS.

HARDWARE LIST



IF YOU DO NOT HAVE THE PACK RACK KIT SKIP TO PAGE 6

Do not install by yourself! Have a second pair of hands to assist with the installation.

DS = DRIVER SIDE / PS = PASSENGER SIDE

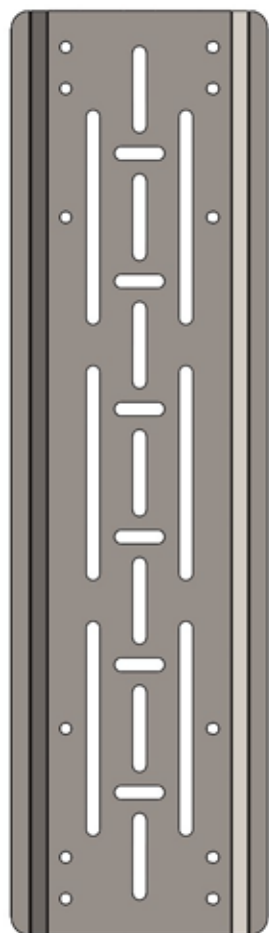


(1)- 2 DOOR DS BOTTOM BRACKET
(2FB-PR-1)

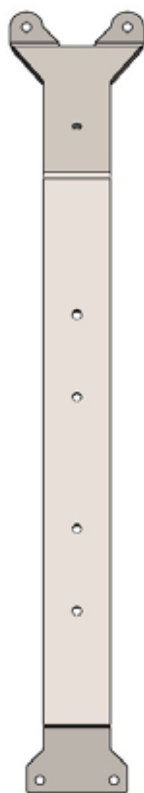


(1)- 2 DOOR PS BOTTOM BRACKET
(2FB-PR-2)

(2)- 41" FOAM STRIP



(2)- MOUNTING PLATE



(4)- BRONCO
PAK RAX ARMS

(8)
1/4"-20 X 3/4"



(8)
1/4" ID
WASHER



(8)
1/4"-20
NYLON NUTS



(16)
1/4"-20 X 5/8"



(24)
1/4" ID
WASHER

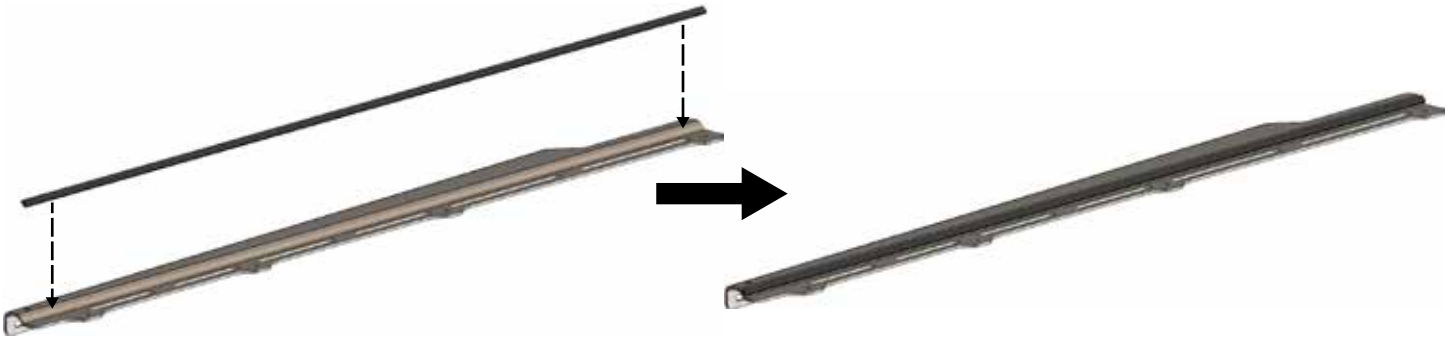


TORQUE SPECS

KEEP IN MIND, THE AVERAGE TORQUE SPECS OF A 1/4"-20 BOLT IS 75 INCH POUNDS WHICH EQUALS 6.25 FOOT POUNDS. THE HEAD OF THE BOLT SHEARS AT 15 FOOT POUNDS.

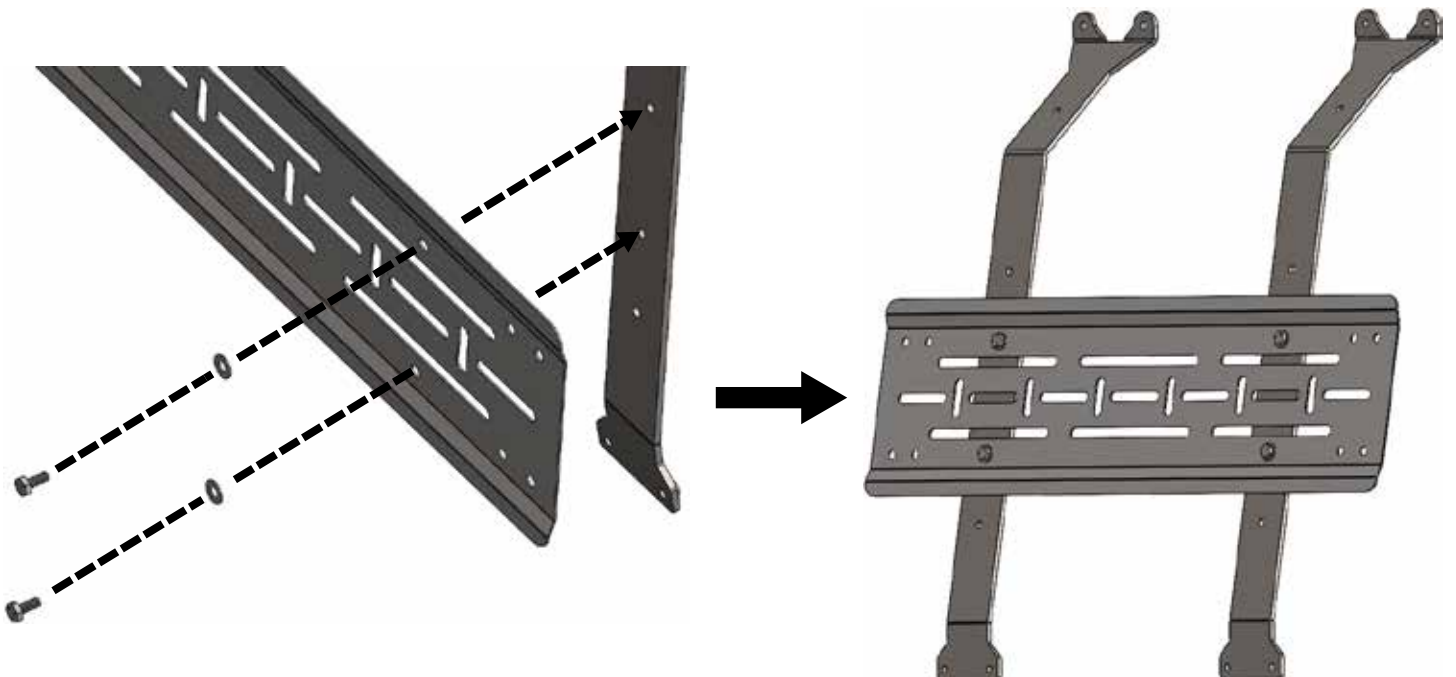
STEP 1

PLACE THE 41 INCH FOAM STRIP ONTO THE PASSENGER SIDE AND DRIVER SIDE LOWER MOUNTING BRACKETS,



STEP 2

ATTACH MOUNTING PLATE ONTO BRONCO PAK RAX ARMS USING (4) 1/4"-20 X 5/8" HEX BOLTS AND (4) 1/4" ID WASHERS. KEEP BOLTS LOOSELY FIT UNTIL **PAGE 16**.



LOWER MOUNT BRACKET INSTALLATION



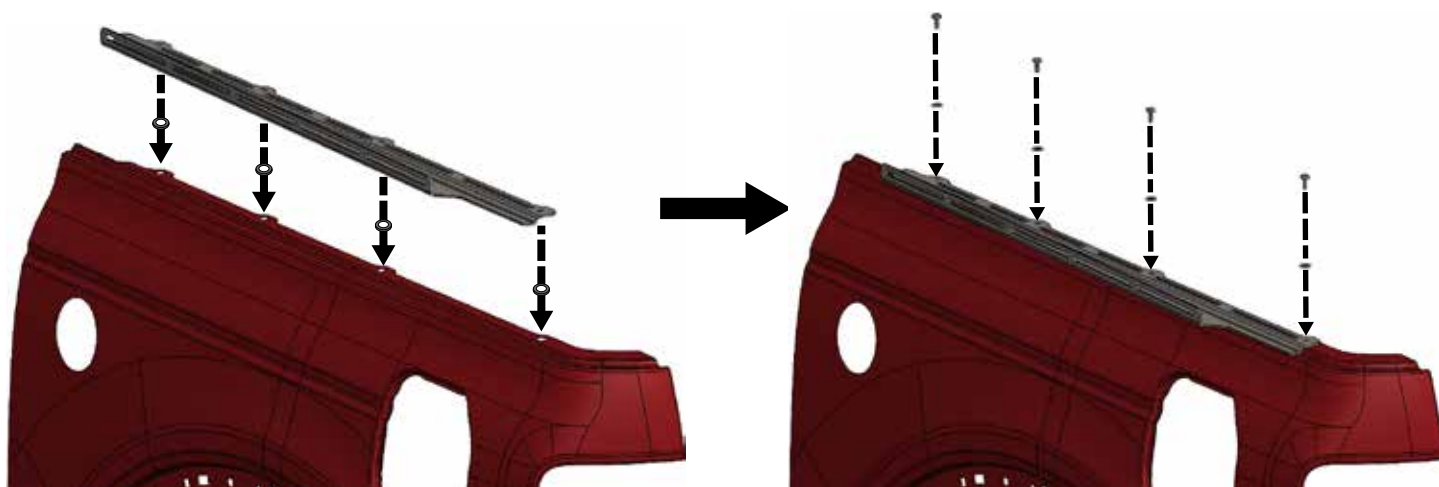
STEP 1

REMOVE HARDTOP USING THE BRONCO'S PROVIDED TOOL KIT AND ENSURE ALL HARDWARE AND WIRES ARE DISCONNECTED. NEXT, FULLY SEAT YOUR WRENCH OR SOCKET HEAD ON FENDER BOLT HEADS BEFORE REMOVING. **CAREFULLY** REMOVE THE (4) FENDER BOLTS AND WASHERS FROM DRIVER AND PASSENGER SIDE.



STEP 2

CLEAN FENDER FROM ANY DIRT OR DEBRIS. PLACE (4) 1/4"-20 STAINLESS STEEL WASHERS UNDERNEATH LOWER MOUNTING BRACKET AND LOWER THE BRACKET ONTO REAR FENDER LINING UP THE THREE BOLT HOLES. USE THE SAME REAR FENDER BOLTS AND WASHERS FROM STEP 1 TO ATTACH THE LOWER MOUNTING BRACKETS. TIGHTEN TO SNUG BUT **DO NOT OVER TIGHTEN**.



STEP 3

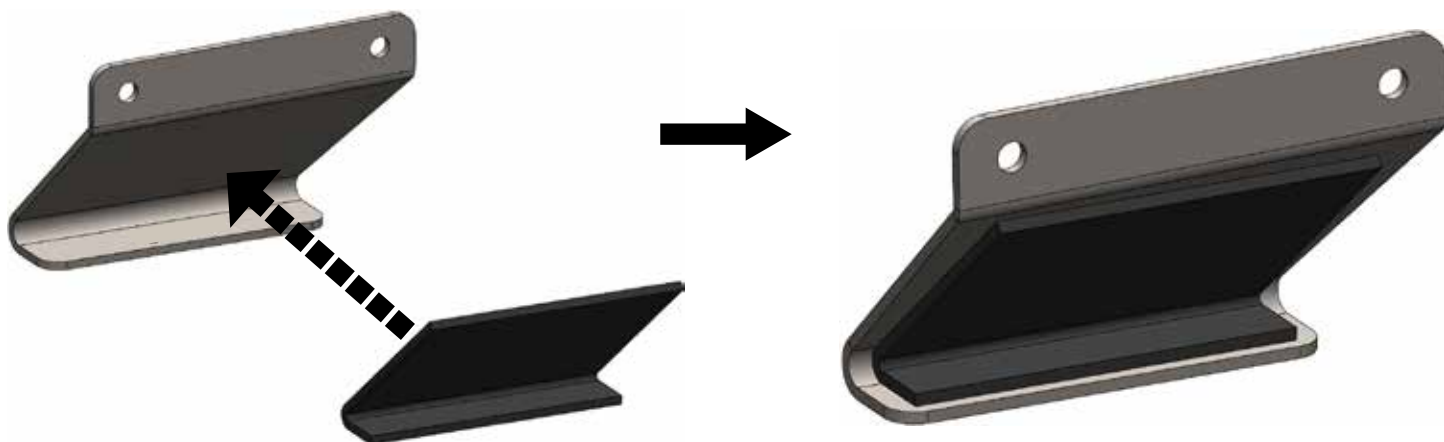
PUT THE HARDTOP BACK ONTO THE BRONCO AND ENSURE ALL HARDWARE AND WIRE CONNECTIONS ARE INSTALLED PROPERLY.

TRMR ROOF RACK PRE-ASSEMBLY



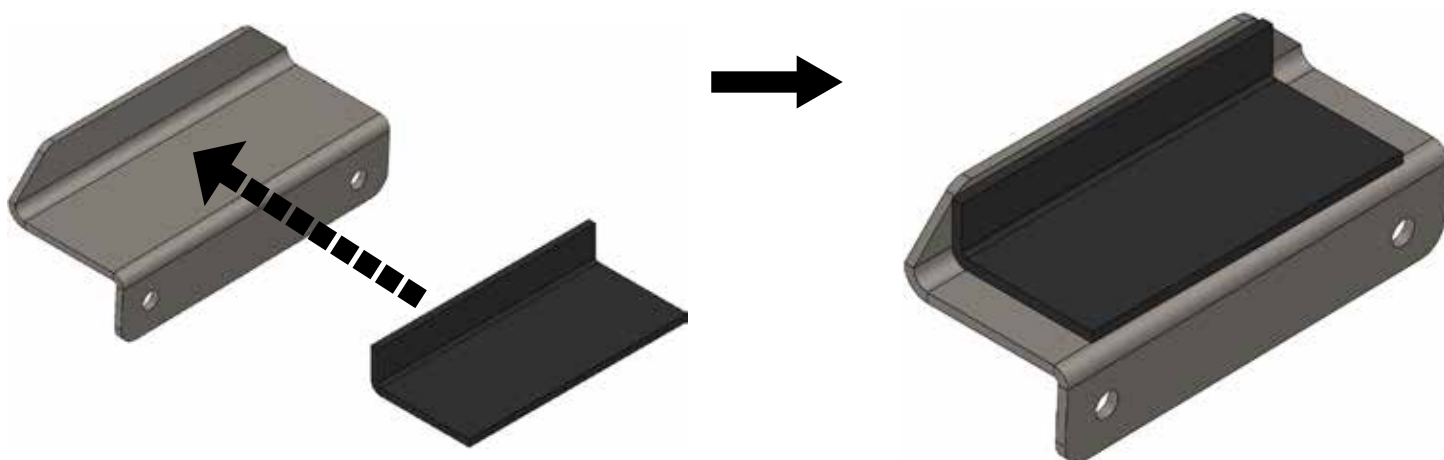
STEP 1

INSERT THE 4" X 4" FOAM STRIP BY REMOVING THE ADHESIVE COVER AND PLACING INTO THE GROOVE. DO THIS FOR ALL **OUTER** CLAMPS.



STEP 2

INSERT THE 2.5" X 4" FOAM STRIPS BY REMOVING THE ADHESIVE COVER AND PLACING INTO THE GROOVE. DO THIS FOR ALL **INNER** CLAMPS.



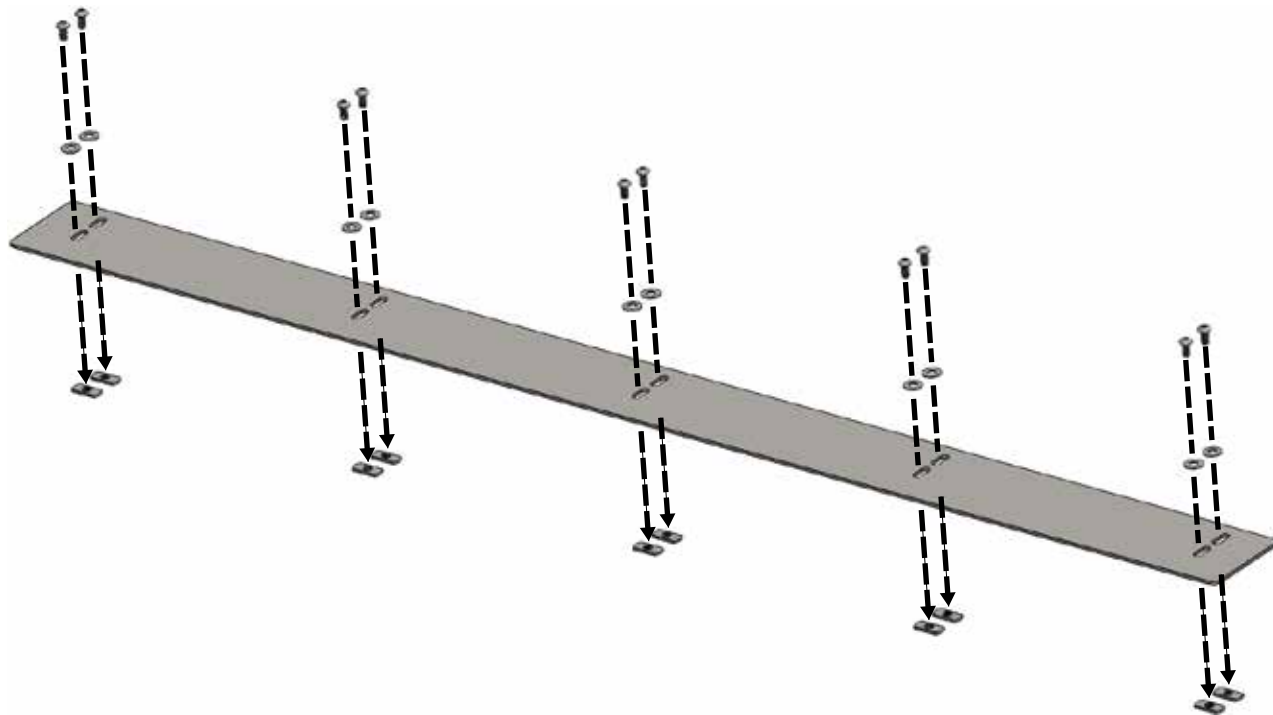


TRMR ROOF RACK ASSEMBLY



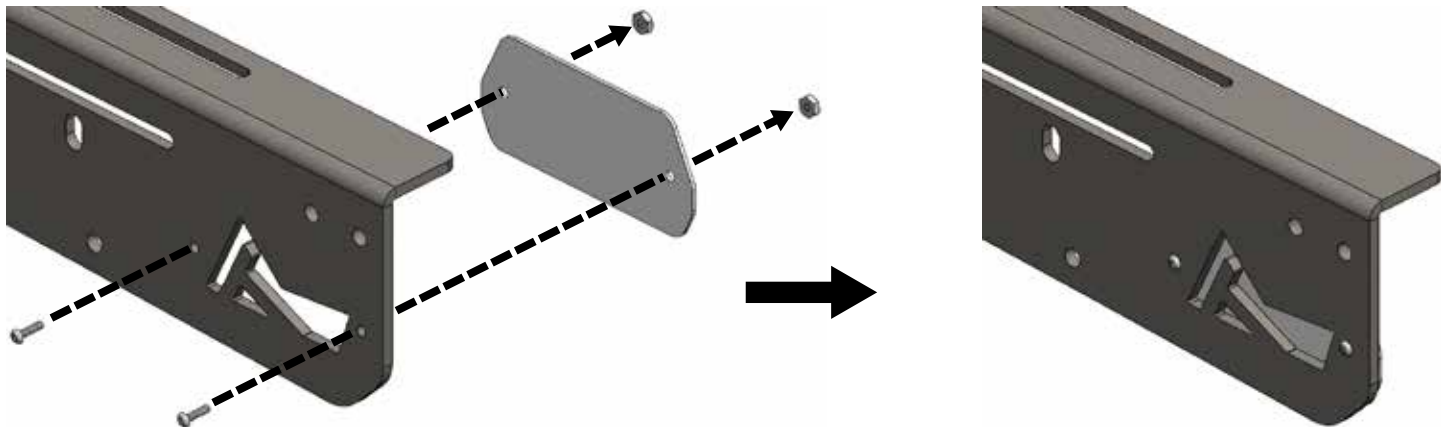
STEP 1

INSTALL (10) 1/4"-20 1/2" BLACK OXIDE BUTTON HEAD BOLTS, (10) 1/4" BLACK OXIDE ID WASHERS, AND (10) 1/4" T-NUTS ONTO WIND DEFLECTOR PLATE. KEEP THE T-NUTS LOOSE AT THIS TIME.



STEP 2

USE (2) 5-40 1/2" BOLTS AND (2) 5-40 NUTS TO INSTALL EACH LOGO PLATE TO THE DRIVER AND PASSENGER SIDE RAILS.

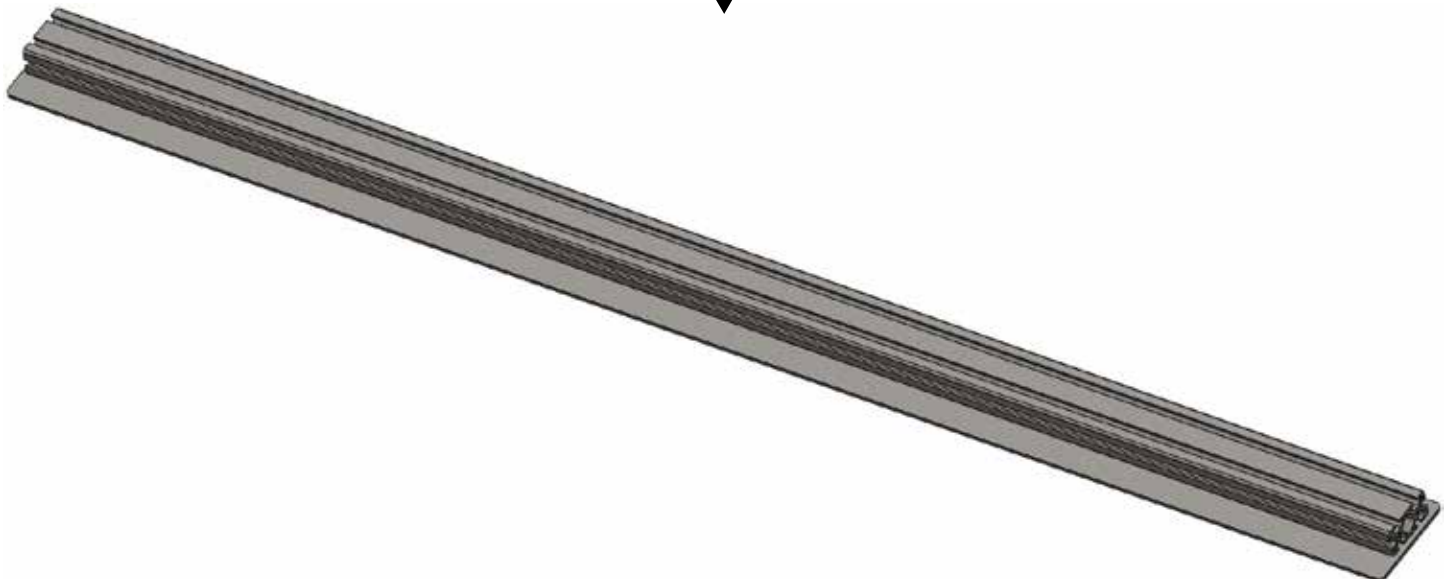
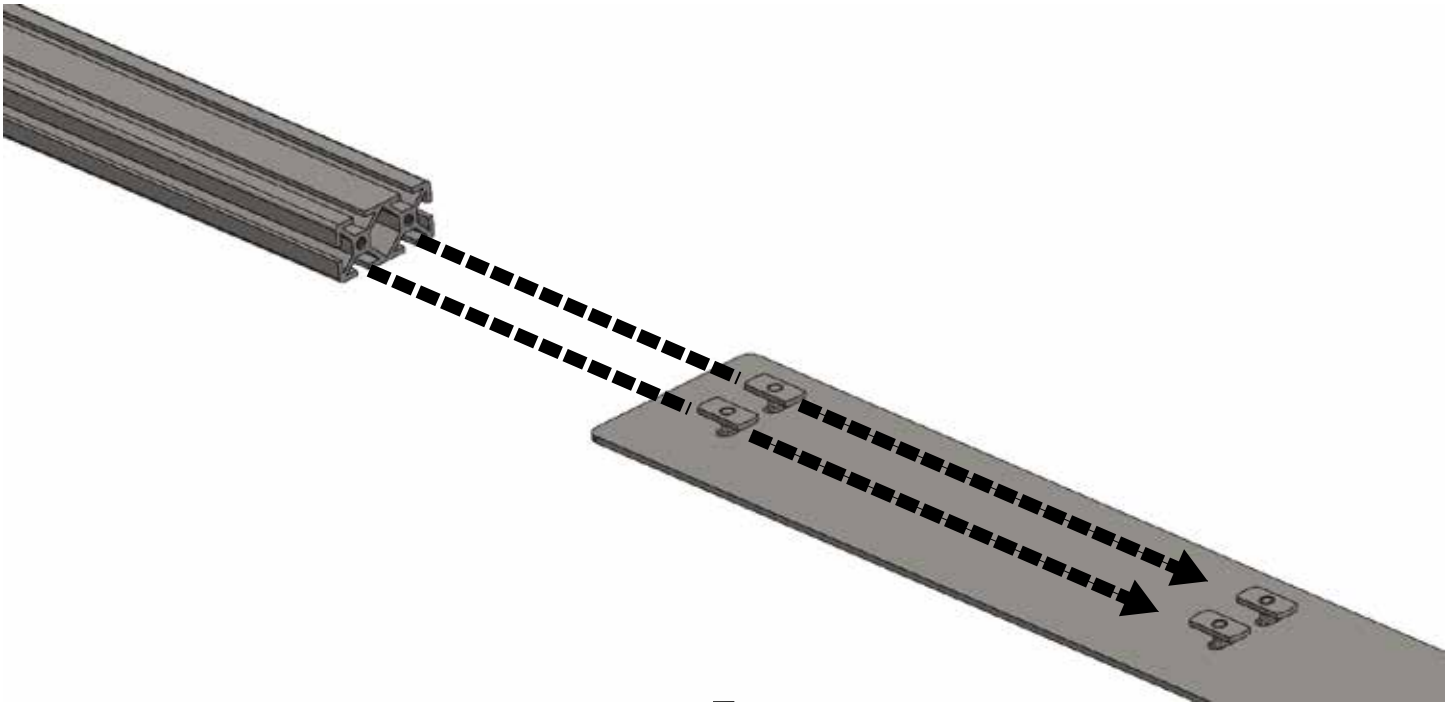


TRMR ROOF RACK ASSEMBLY



STEP 3

SLIDE THE WINDSHIELD MOUNTING SUBASSEMBLY ONTO THE WIND DEFLECTOR'S T-NUTS. **DO NOT** FASTEN 1/4"-20 BLACK OXIDE BUTTON HEAD BOLTS AT THIS TIME.



TRMR ROOF RACK ASSEMBLY



STEP 4

INSTALL ALL ALUMINUM EXTRUSIONS USING (4) 1/4"-20 3/4" BLACK OXIDE BUTTON HEAD BOLTS AND (4) 1/4" ID BLACK OXIDE WASHERS PER EXTRUSION. ADD A SMALL AMOUNT OF LOCTITE TO EACH BOLT.



WARNING

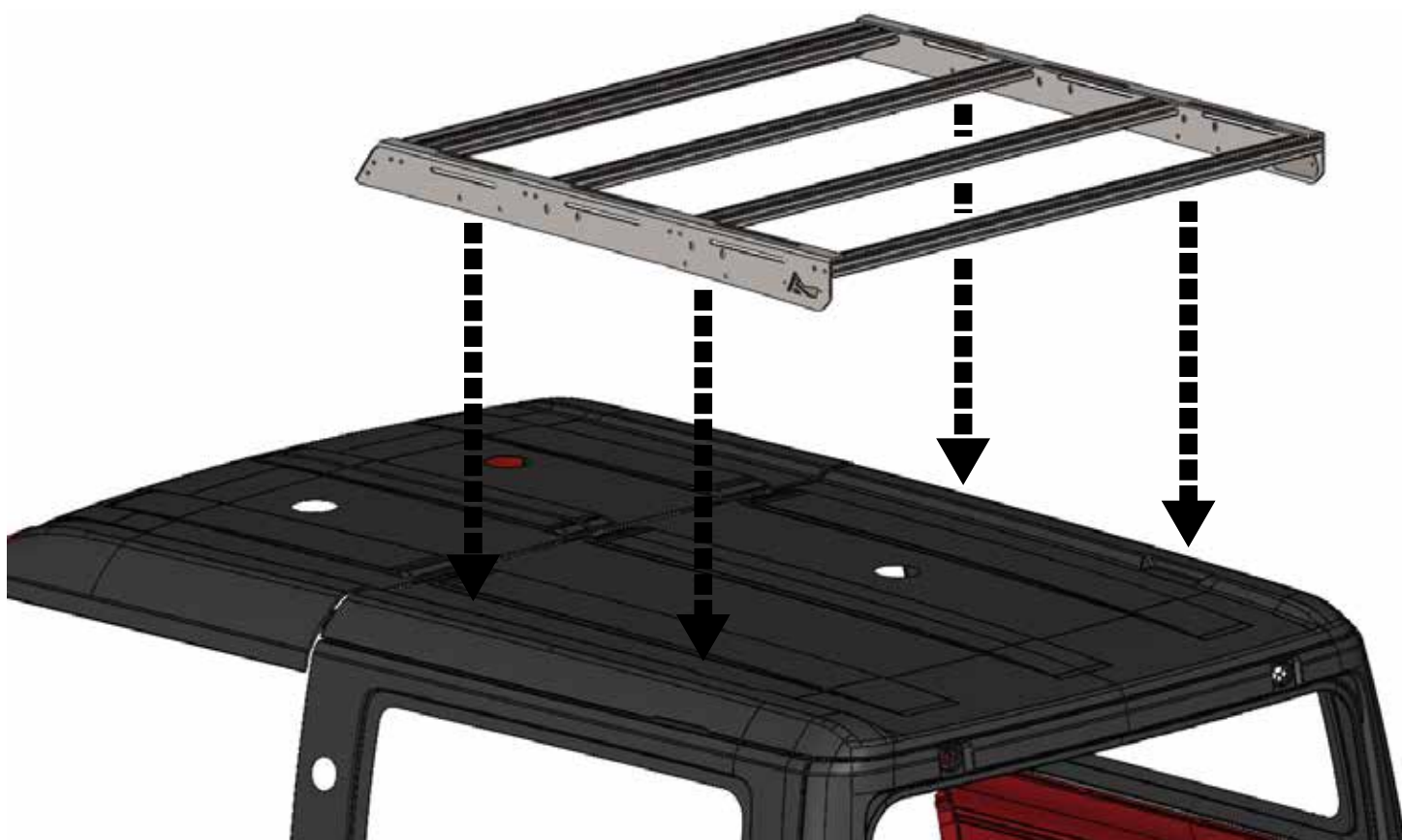
MAKE SURE WIND DEFLECTOR REST
ON TOP OF THE PASSENGER AND
DRIVER SIDE RAILS.

TRMR ROOF RACK ASSEMBLY



STEP 5

PLACE AND POSITION THE TRMR ROOF RACK ONTO THE BRONCO HARDTOP. MAKE SURE TO LINE UP ALL ACCESSORY READY MOUNTING POINTS.



WARNING

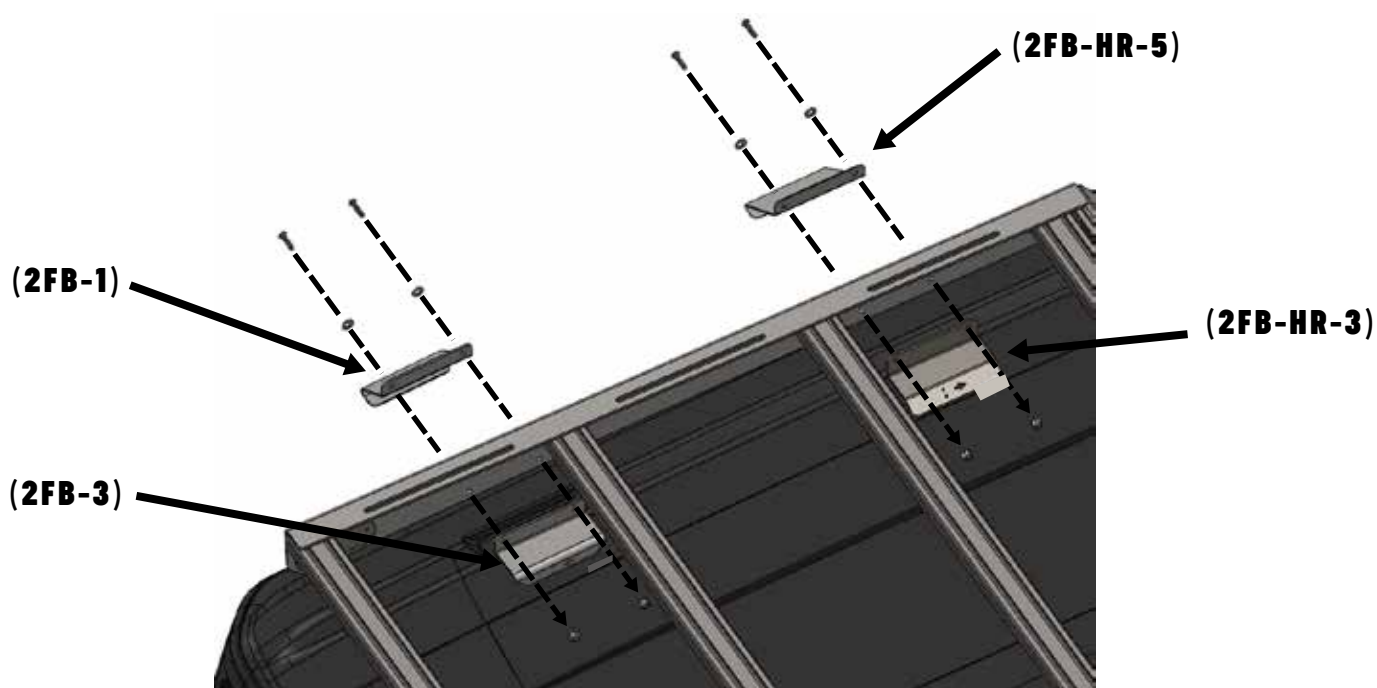
DO THIS STEP WITH AN EXTRA SET
OF HANDS TO MAKE THE PROCESS
EASIER.

TRMR ROOF RACK ASSEMBLY

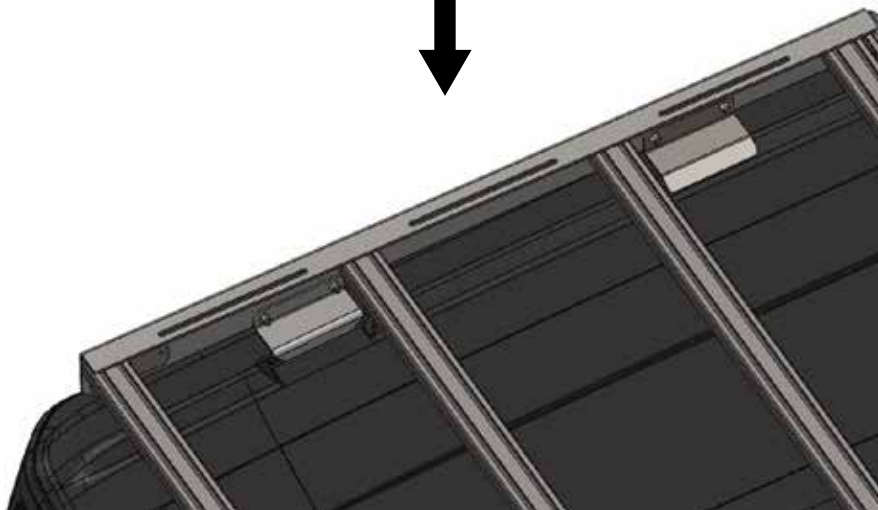


STEP 6

MOUNT EACH INNER AND OUTER CLAMP TO THE DRIVER AND PASSENGER SIDE RAILS USING (2) 1/4"-20 X 1" BLACK OXIDE BUTTON HEAD BOLTS, (2) 1/4" ID BLACK OXIDE WASHERS, AND (2) 1/4" NYLON NUTS. NOTE, PART NUMBERS **2FB-1** AND **2FB-3** GO ON THE REAR DRIVER SIDE AND **2FB-HR-5** AND **2FB-HR-3** GO ON THE FRONT DRIVER SIDE. PART NUMBERS **2FB-2** AND **2FB-4** GO ON THE REAR PASSENGER SIDE AND **2FB-HR-6** AND **2FB-HR-4** GO ON THE FRONT PASSENGER SIDE.



(PHOTO DEPICTS DRIVER SIDE)



BRONCO PAK RAX ADD-ON



STEP 1

PLACE PAK RAX SUBASSEMBLY ON THE INSIDE FACE OF THE LOWER MOUNTING BRACKET. LINE UP TOP PAK RAX ARMS TO THE TRMR ROOF RACK'S MOUNTING POINTS.



STEP 2

FOR TOP OF EACH ARM USE (2) 1/4"-20 X 3/4" BLACK OXIDE BUTTON HEAD BOLTS, (2) 1/4" ID BLACK OXIDE WASHERS, AND (2) 1/4" NYLON NUTS. FOR BOTTOM OF EACH ARM USE (2) 1/4"-20 X 5/8" STAINLESS STEEL HEX HEAD BOLTS AND (2) 1/4" ID WASHERS. TIGHTEN ALL HARDWARE BUT DON'T OVER TIGHTEN.

