

Cascade™

● Custom Cascade™
Static Screens in Empire

● Autex Acoustics
United Kingdom



● Cascade S4 Static Screens in Galaxy, Senado, Zenith and Ironbank

● Tesco Mobile, United Kingdom



Sheer tranquility

As the name suggests, Cascade™ Hanging Screens are spatial and acoustic partitions that fall elegantly from the ceiling to the floor—fixed or suspended at either end via the Cascade suspension kit.

The Cascade family consists of three distinct screen styles—Static, Folding, and Expanding—each made from 100% polyester fibre with delicate water-cut patterns. Static screens are 1200 mm by 2400 mm, holding space without obstructing sightline in open-plan environments. Folding screens are the same dimensions, but their water-cut patterns fold out, increasing surface area for acoustic absorption. Expanding Screens start at 1200 mm by 2400 mm, growing 100% in size through a series of intricate cuts to form fine, lace-esque patterns.

Lightweight yet sturdy, Cascade Hanging Screens are semi-permanent by nature; easy to install, uninstall, and move around your space as required.

To find out more about Cascade
visit www.autexglobal.com



● Custom Cascade Static Screens
in Senado



● London School of Economics,
United Kingdom



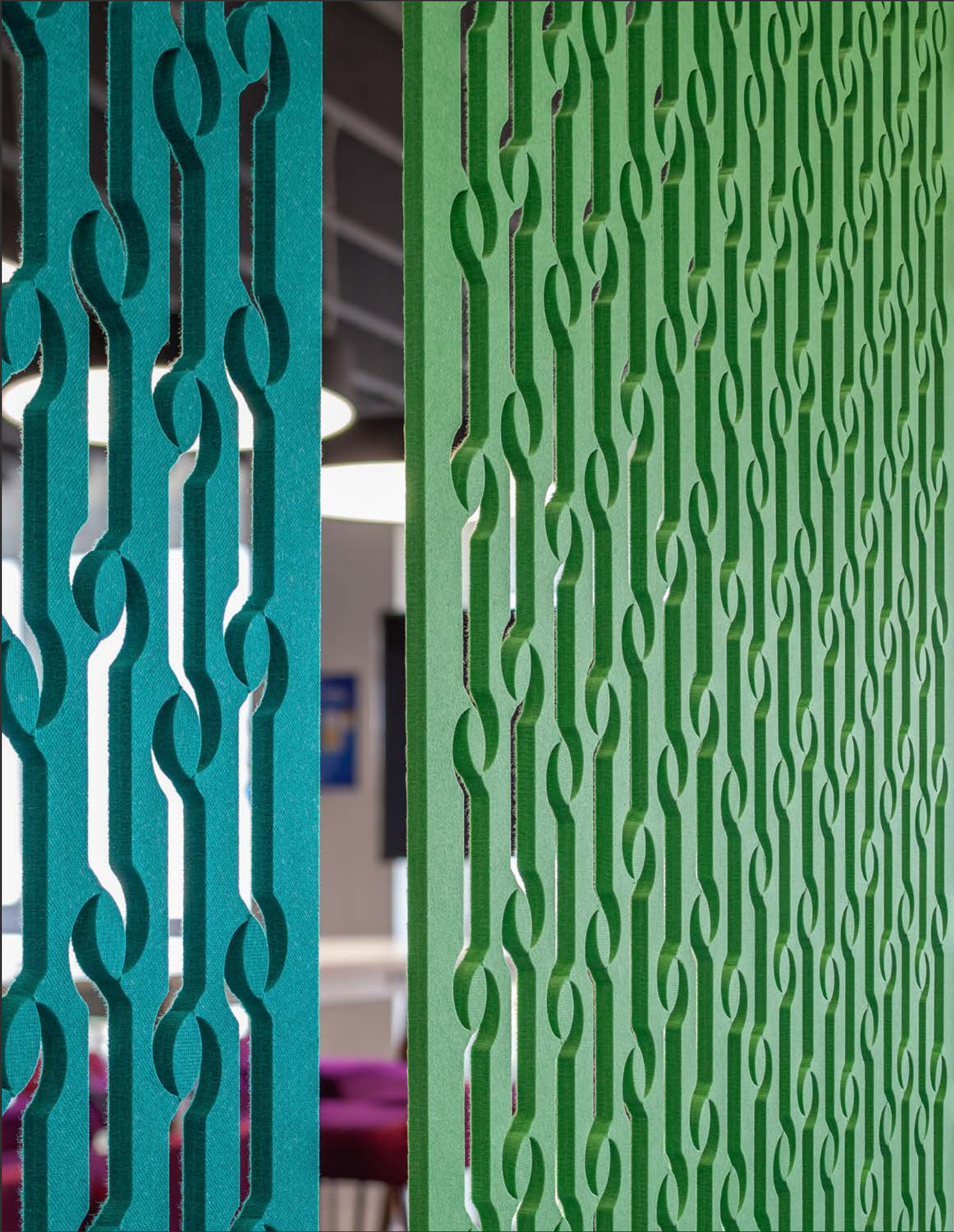
Features and benefits

- Delivers excellent acoustic performance
- A complete system, simple to install straight out of the box
- Lightweight and incredibly easy to handle on-site
- Easy to retrofit in existing spaces
- Semi-permanent so that you can change your space as required
- Environmentally conscious product with recycled material content and no added chemical binders
- Low VOC, non-toxic, non-irritant, non-allergenic and contains no Red List chemicals—great for IEQ

Applications

- Decorative and functional acoustic screen system for interior spaces
- Can be fixed to, or suspended from, ceilings and floors
- Effortlessly creates breakout zones in open-plan spaces





● Cascade E4 Expanding Screens in Bosco, Falling Water, Senado and Zenith

● Tesco Mobile, United Kingdom



Cascade™ Expanding Screens

In perpetual evolution, the Cascade Expanding Screen blooms and wanes to meet the needs of your space. With a gentle tug, the screen concertinas out, growing 100% in size without off-cuts or cut-outs; an intuitive design that is both environmentally and spatially aware.

Patent

Expanding and Folding Panel Patent

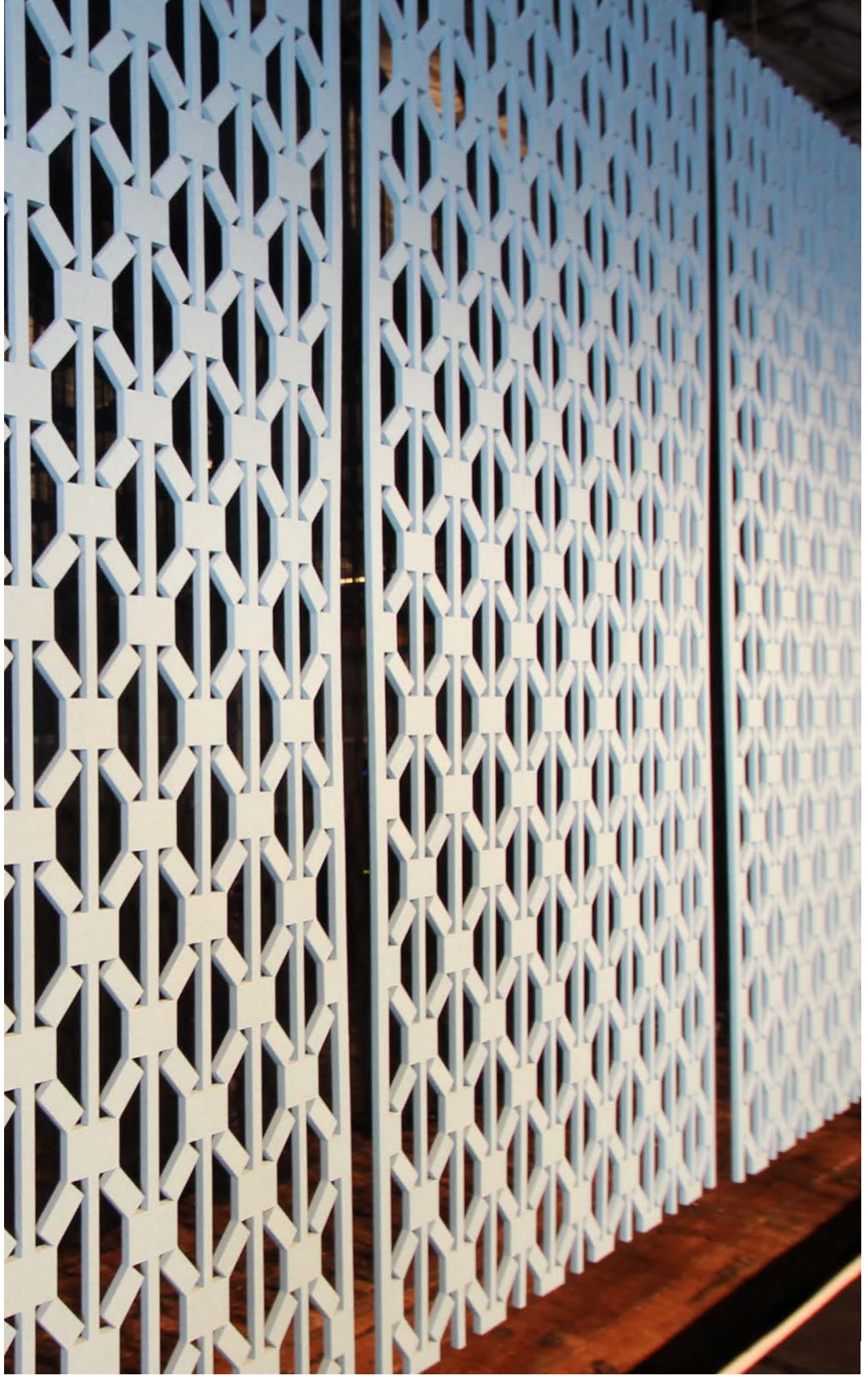
US Patent 10,184,249 | GB Patent 2,547,530 |

NZ Patent app 727634 | AU Patent app 2016273959

To find out more about Cascade
visit www.autexglobal.com

● Cascade E3 Expanding Screens
in Falling Water

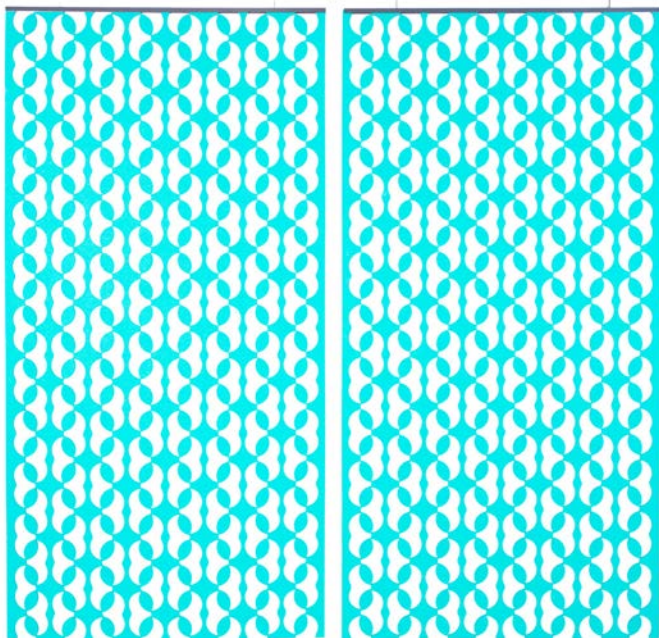
● New Zealand Trade & Enterprise,
New Zealand



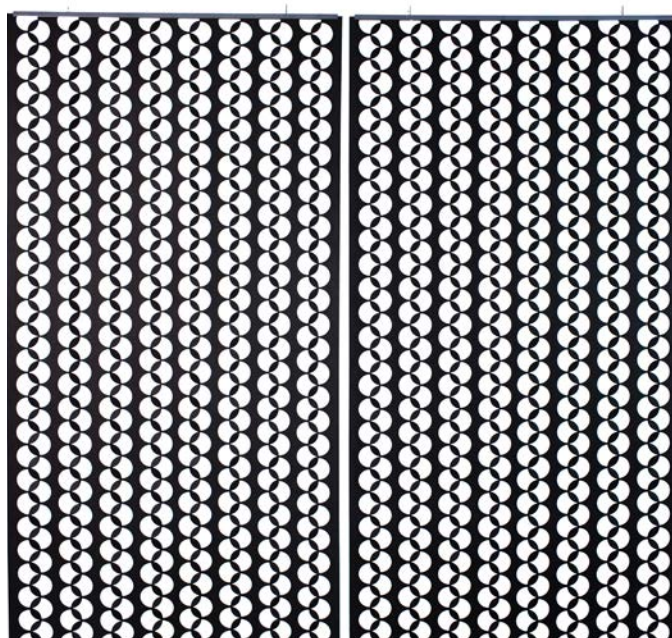
Expanding design options

Pack contents

2 Cascade Expanding Screens, 2 Frontier Channels,
4 Ceiling Connectors, 4 1 m Wires, 4 Autex Suspension Sliders



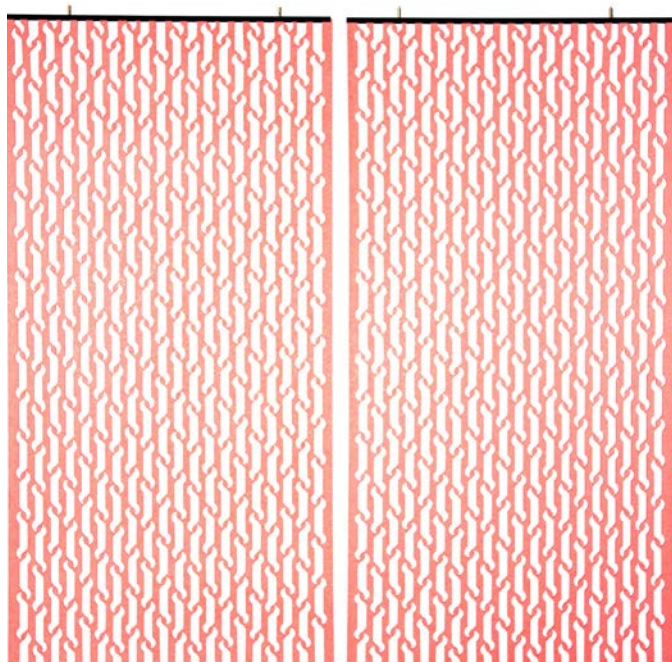
Design E1 more colours available



Design E2 more colours available



Design E3 more colours available



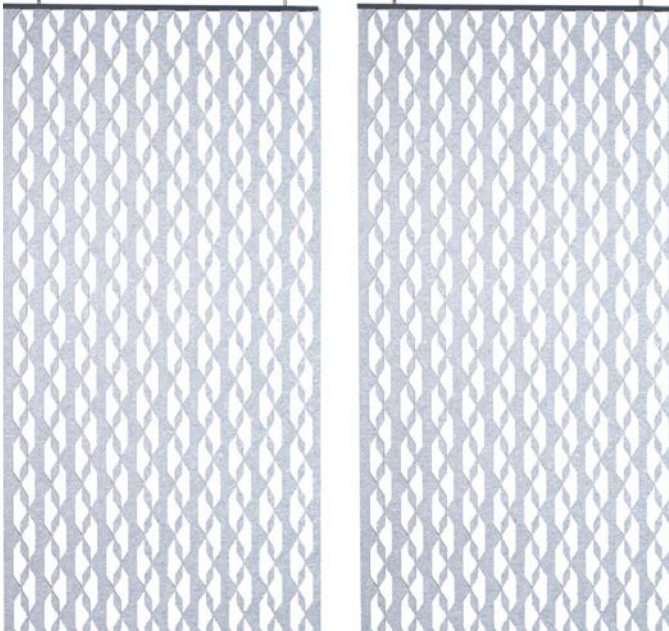
Design E4 more colours available

*Expanding Screens increase by 100% when fully expanded, therefore two screens are created from one panel of Cube™. Images are shown fully expanded.

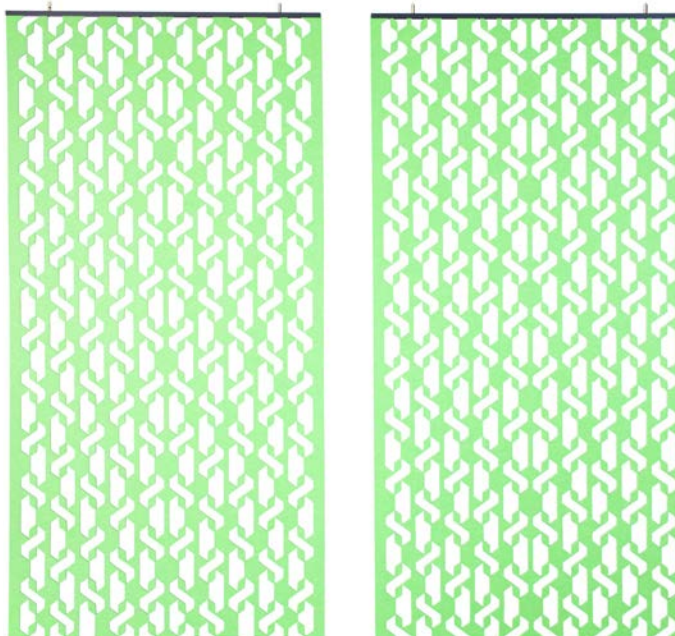
Expanding design options

Pack contents

2 Cascade Expanding Screens, 2 Frontier Channels,
4 Ceiling Connectors, 4 1 m Wires, 4 Autex Suspension Sliders



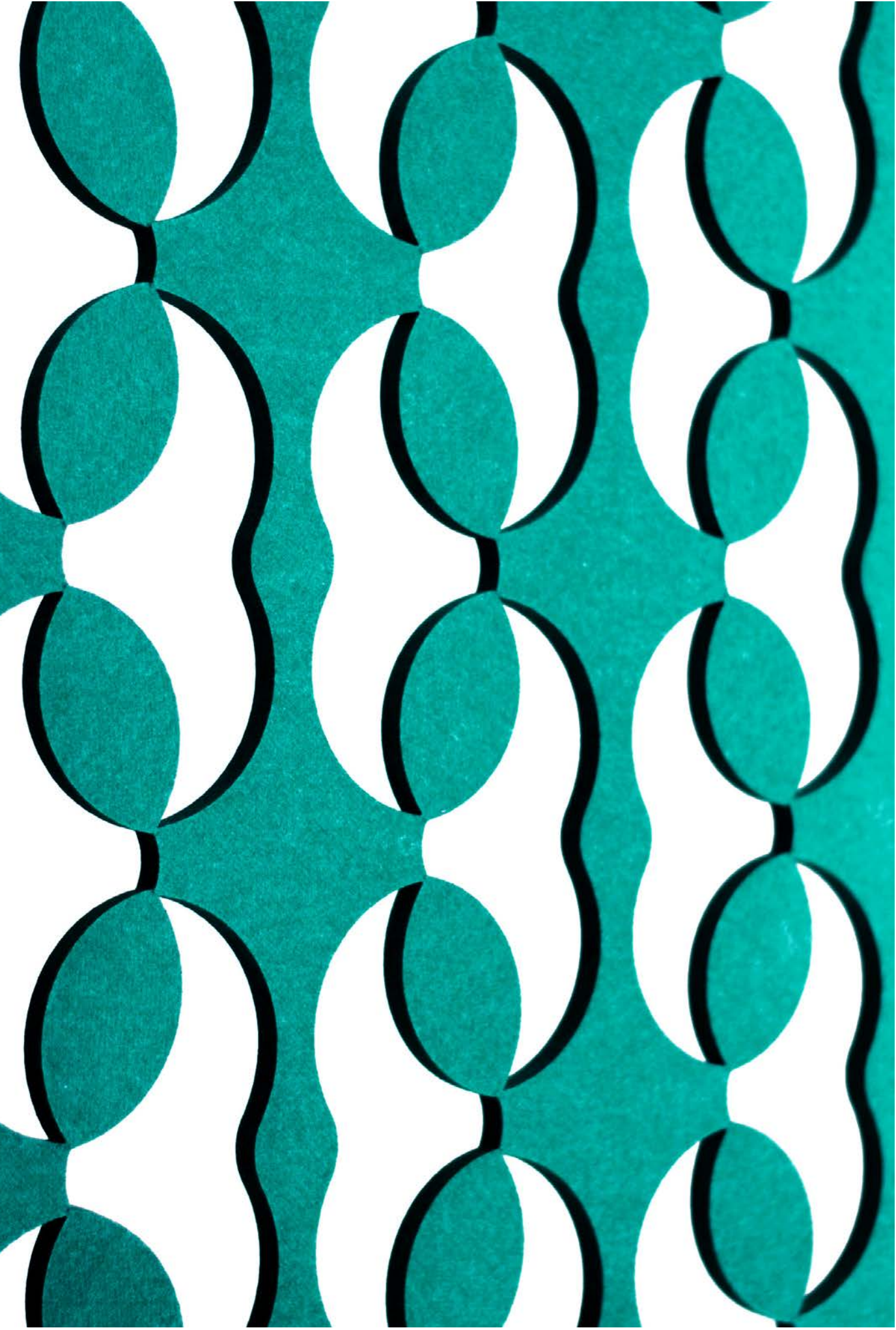
Design E5 more colours available



Design E6 more colours available

*Expanding Screens increase by 100% when fully expanded, therefore two screens are created from one panel of Cube™. Images are shown fully expanded.





● Autex Acoustics,
New Zealand

● Cascade E1 Expanding Screens
in Lotus



● Cascade F3 Folding Screens
in Bosco

● Autex Acoustics,
New Zealand



Cascade™ Folding Screens

Dynamic and mutable, Cascade Folding Screens provide tactile privacy. The folding patterns, adjustable via water-cut hinges, can be gently altered to balance acoustic absorption and line-of-sight as required.

Patent

Expanding and Folding Panel Patent

US Patent 10,184,249 | GB Patent 2,547,530 |

NZ Patent app 727634 | AU Patent app 2016273959

To find out more about Cascade
visit www.autexglobal.com

● Autex Acoustics,
New Zealand

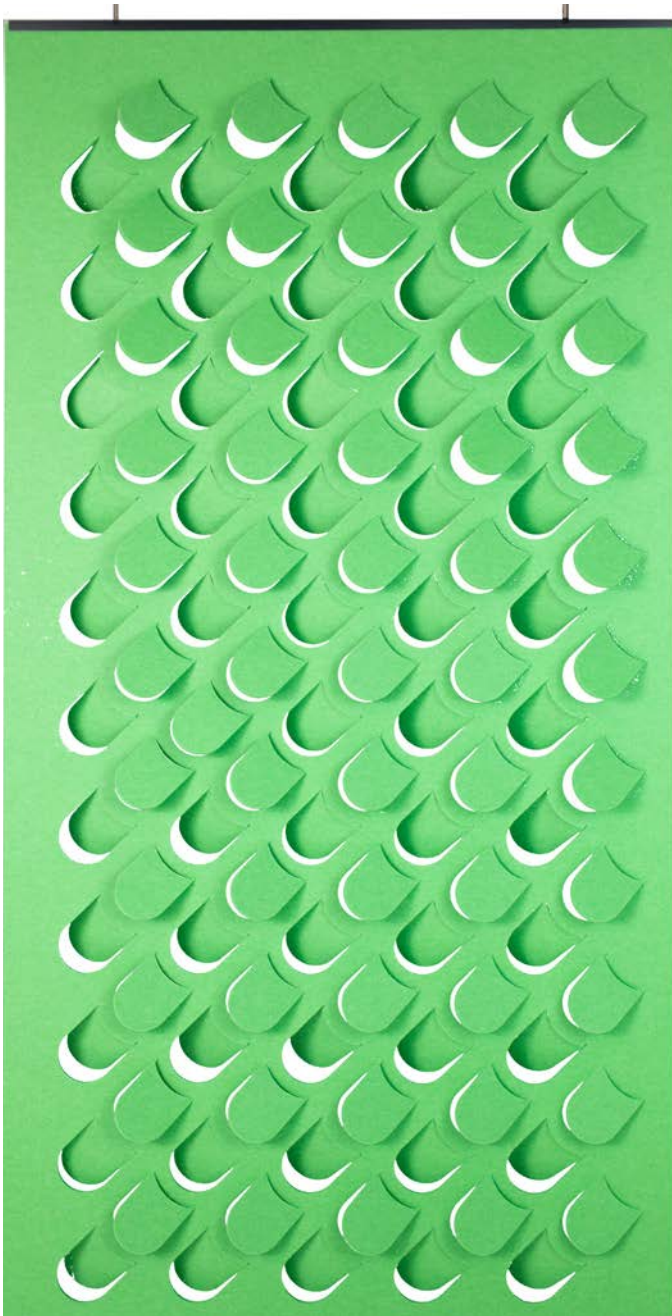
● Cascade F6 Folding Screens
in Petronas



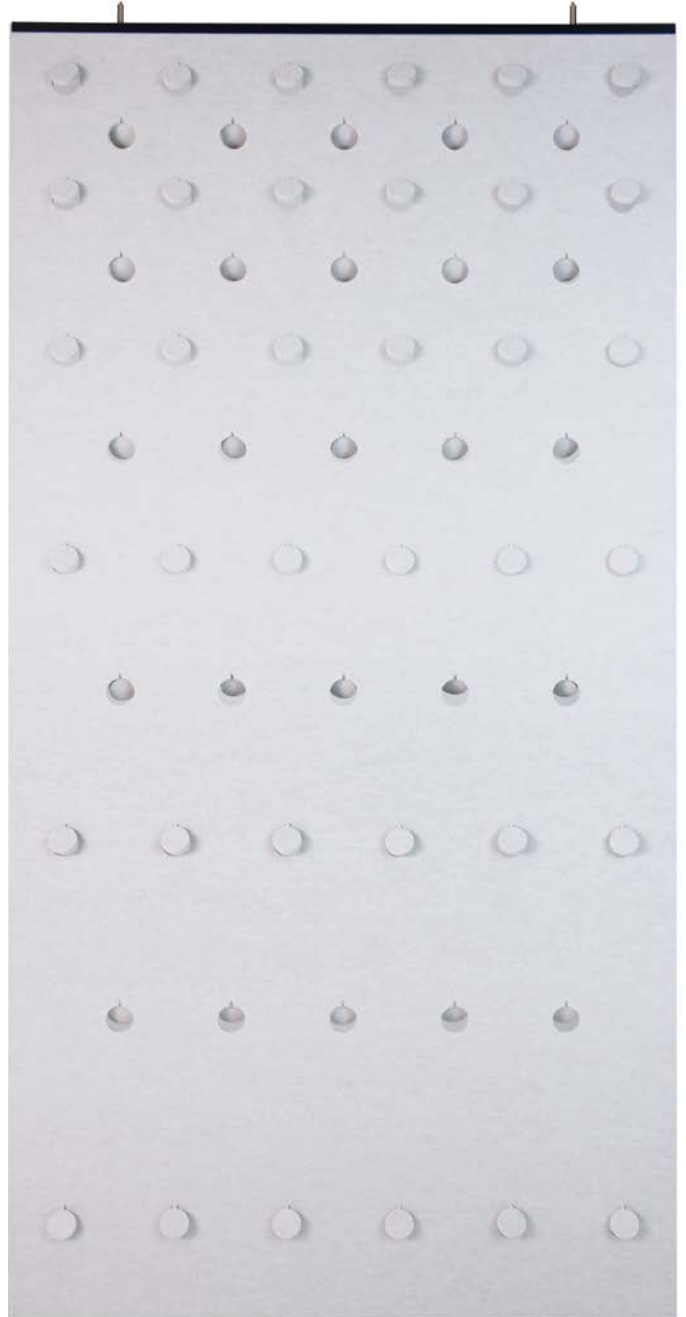
Folding design options

Pack contents

1 Cascade Folding Screen, 1 Frontier Channel,
2 Ceiling Connectors, 2 1 m Wires, 2 Autex Suspension Sliders



Design F1 more colours available

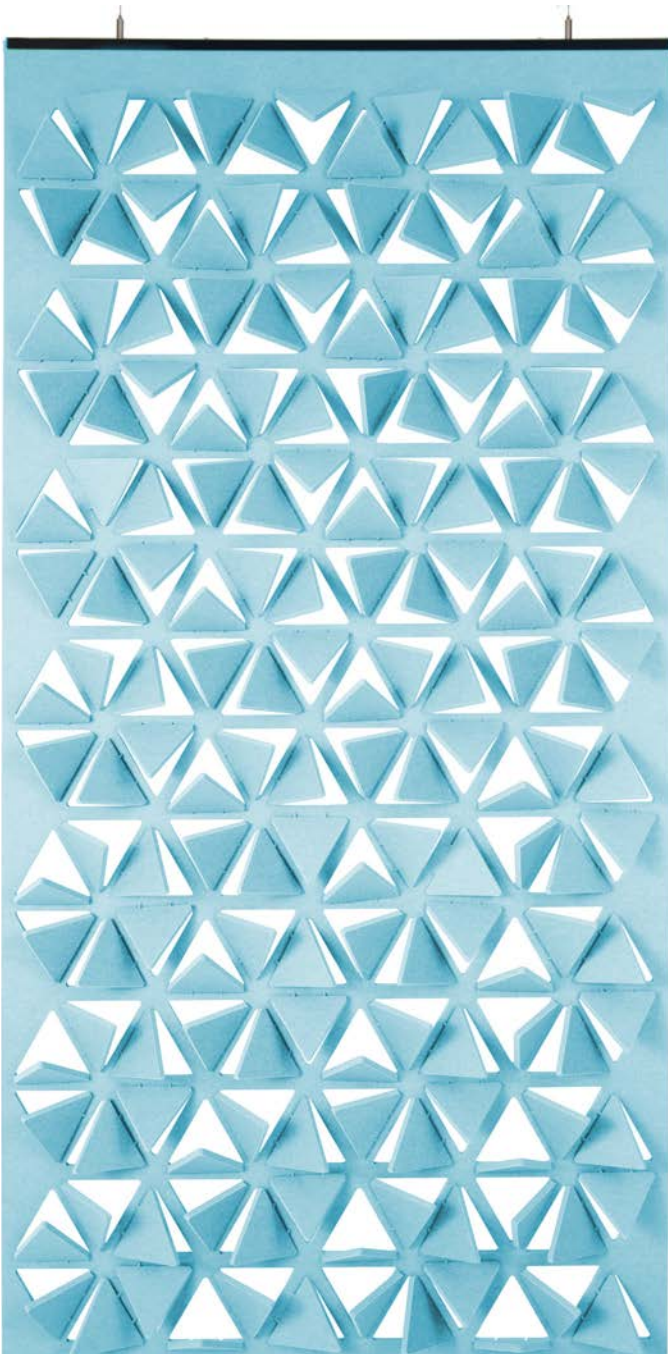


Design F2 more colours available

Folding design options

Pack contents

1 Cascade Folding Screen, 1 Frontier Channel,
2 Ceiling Connectors, 2 1 m Wires, 2 Autex Suspension Sliders



Design F3 more colours available

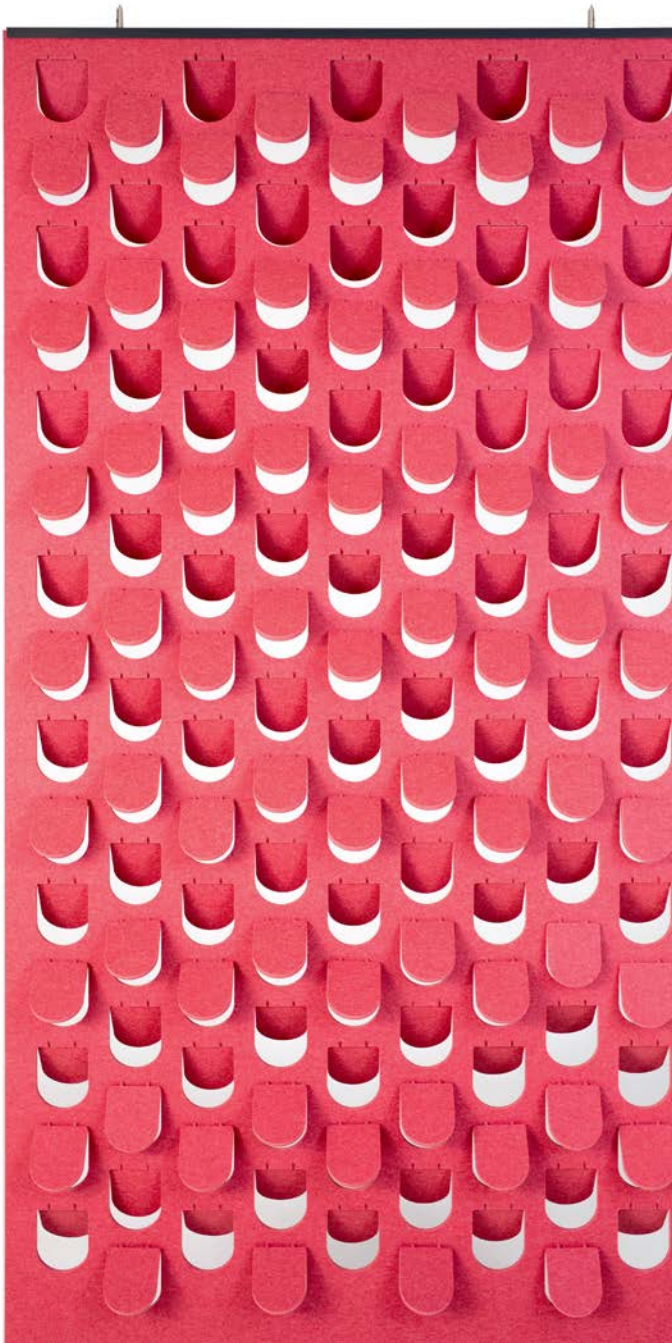


Design F4 more colours available

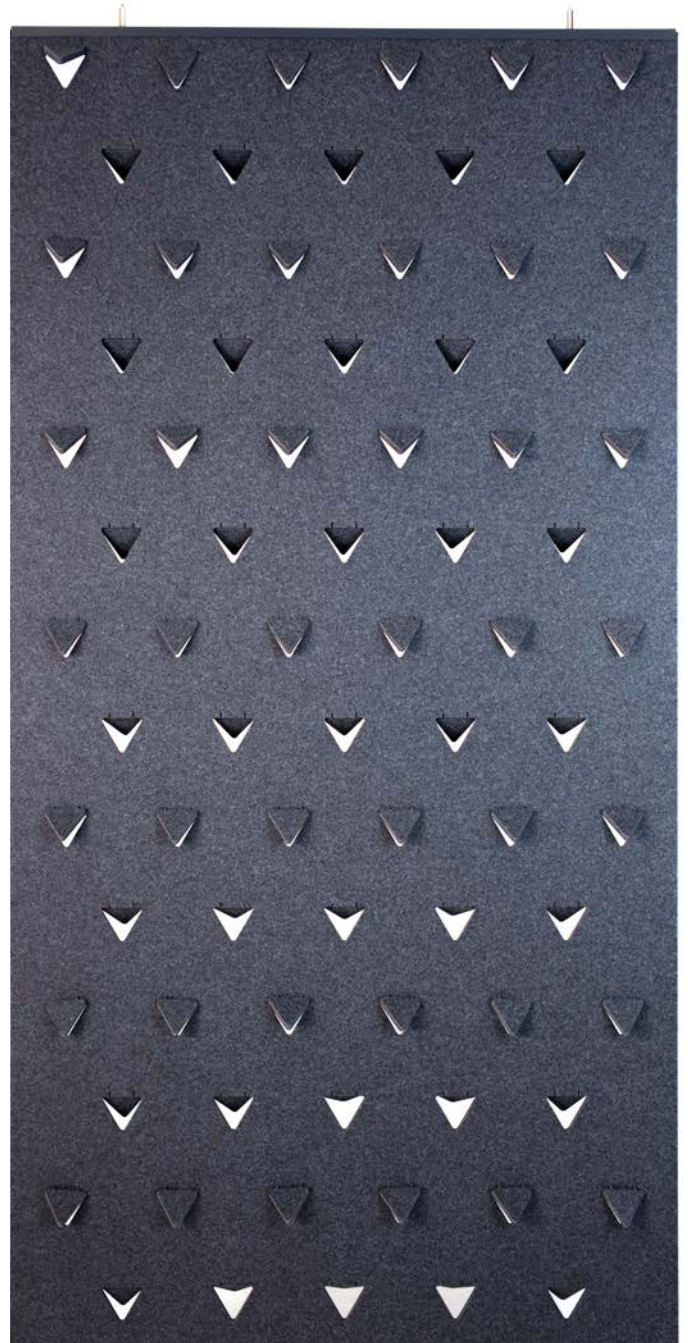
Folding design options

Pack contents

1 Cascade Folding Screen, 1 Frontier Channel,
2 Ceiling Connectors, 2 1 m Wires, 2 Autex Suspension Sliders



Design F5 more colours available

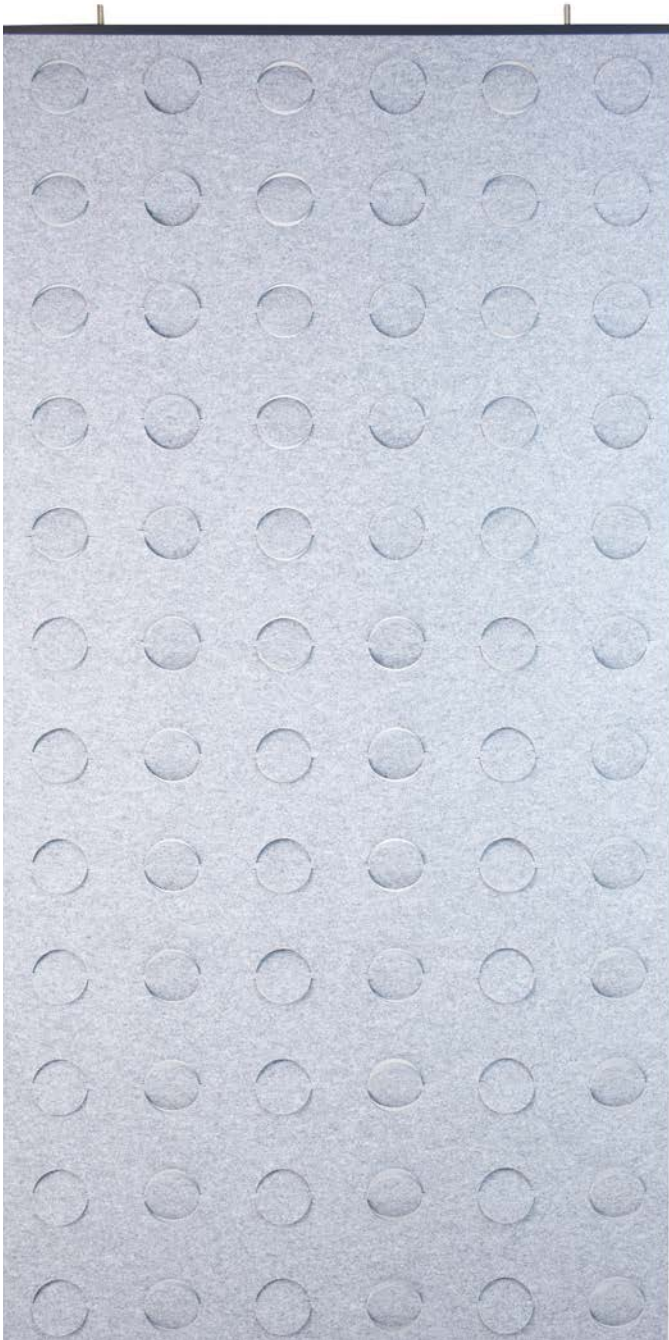


Design F6 more colours available

Folding design options

Pack contents

1 Cascade Folding Screen, 1 Frontier Channel,
2 Ceiling Connectors, 2 1 m Wires, 2 Autex Suspension Sliders



Design F7 more colours available

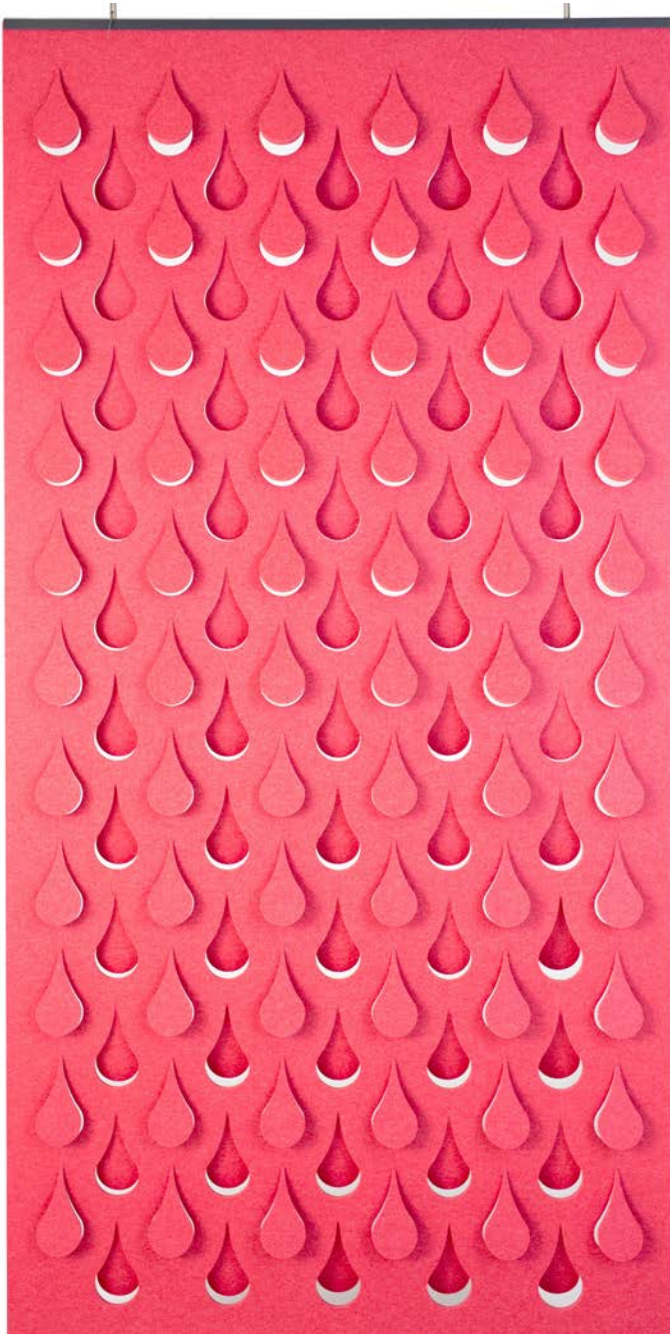


Design F8 more colours available

Folding design options

Pack contents

1 Cascade Folding Screen, 1 Frontier Channel,
2 Ceiling Connectors, 2 1 m Wires, 2 Autex Suspension Sliders



Design F9 more colours available



● Cascade S6 Static Screens
in Flatiron and Empire

● Headingley Stadium,
United Kingdom



Cascade™ Static Screens

A semi-permanent acoustic screen, the Cascade Static Screen exists in limbo—sheltering you from distractions for as long as you need it to. Fixed or suspended at either end with the Cascade suspension kit, the Static Screen is easily installed, uninstalled, and relocated; equally at home in open-plan spaces that evolve often, and spaces with an established layout.

To find out more about Cascade
visit www.autexglobal.com

Static design options

Pack contents

1 Cascade Static Screen, 1 Frontier Channel,
2 Ceiling Connectors, 2 1 m Wires, 2 Autex Suspension Sliders



Design S1 more colours available



Design S2 more colours available



Design S3 more colours available



Design S4 more colours available



Design S5 more colours available



Design S6 more colours available

Static design options

Pack contents

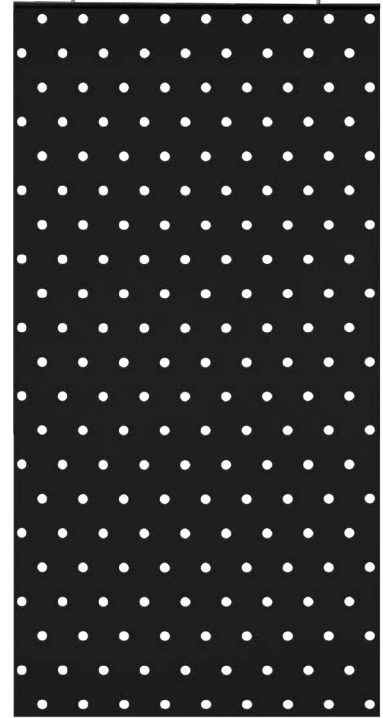
1 Cascade Static Screen, 1 Frontier Channel,
2 Ceiling Connectors, 2 1 m Wires, 2 Autex Suspension Sliders



Design S7 more colours available



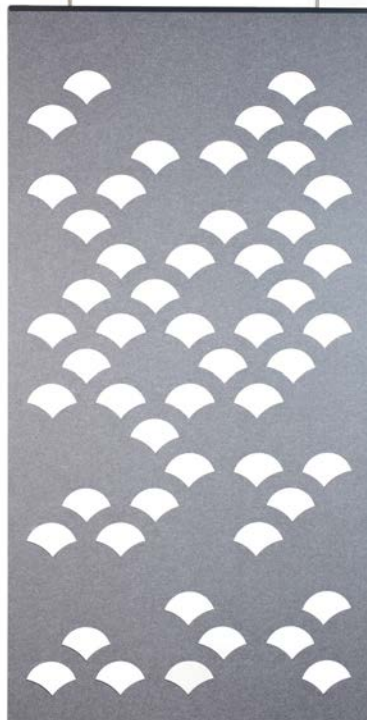
Design S8 more colours available



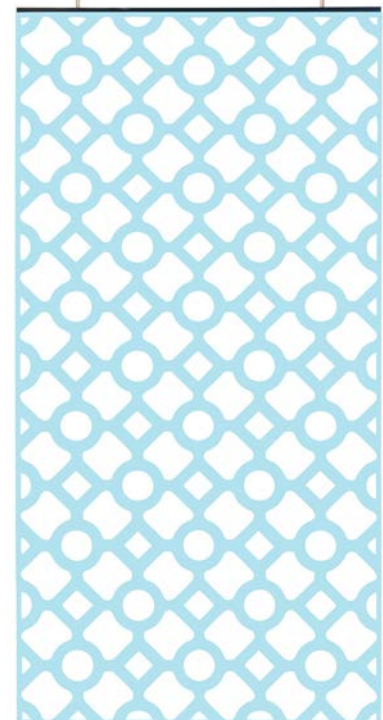
Design S9 more colours available



Design S10 more colours available



Design S11 more colours available



Design S12 more colours available

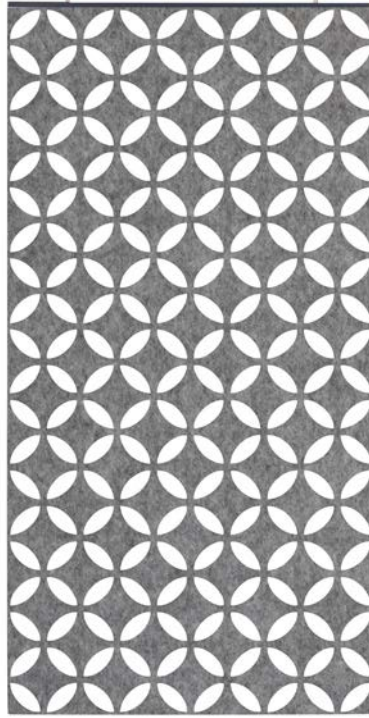
Static design options

Pack contents

1 Cascade Static Screen, 1 Frontier Channel,
2 Ceiling Connectors, 2 1 m Wires, 2 Autex Suspension Sliders



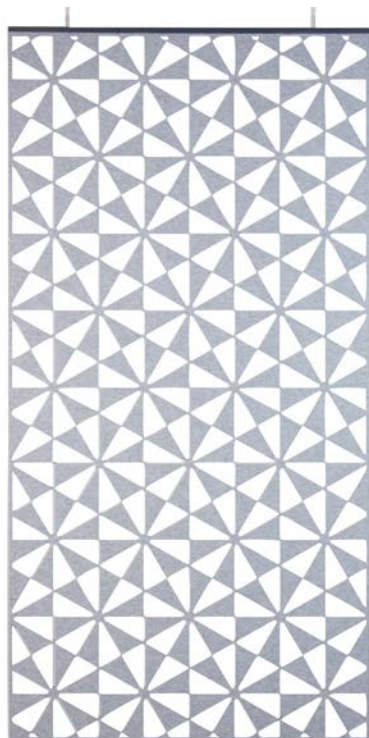
Design S13 more colours available



Design S14 more colours available



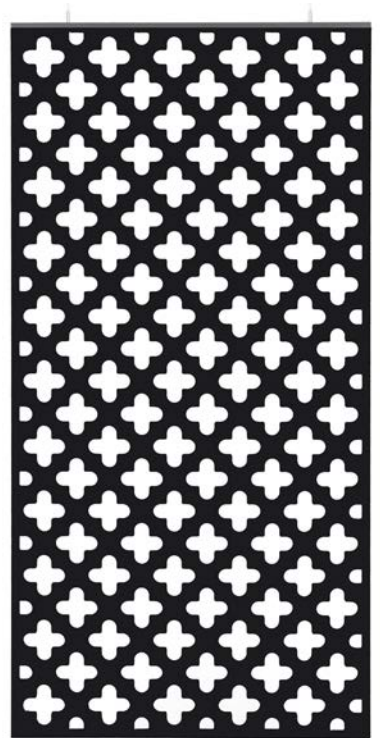
Design S15 more colours available



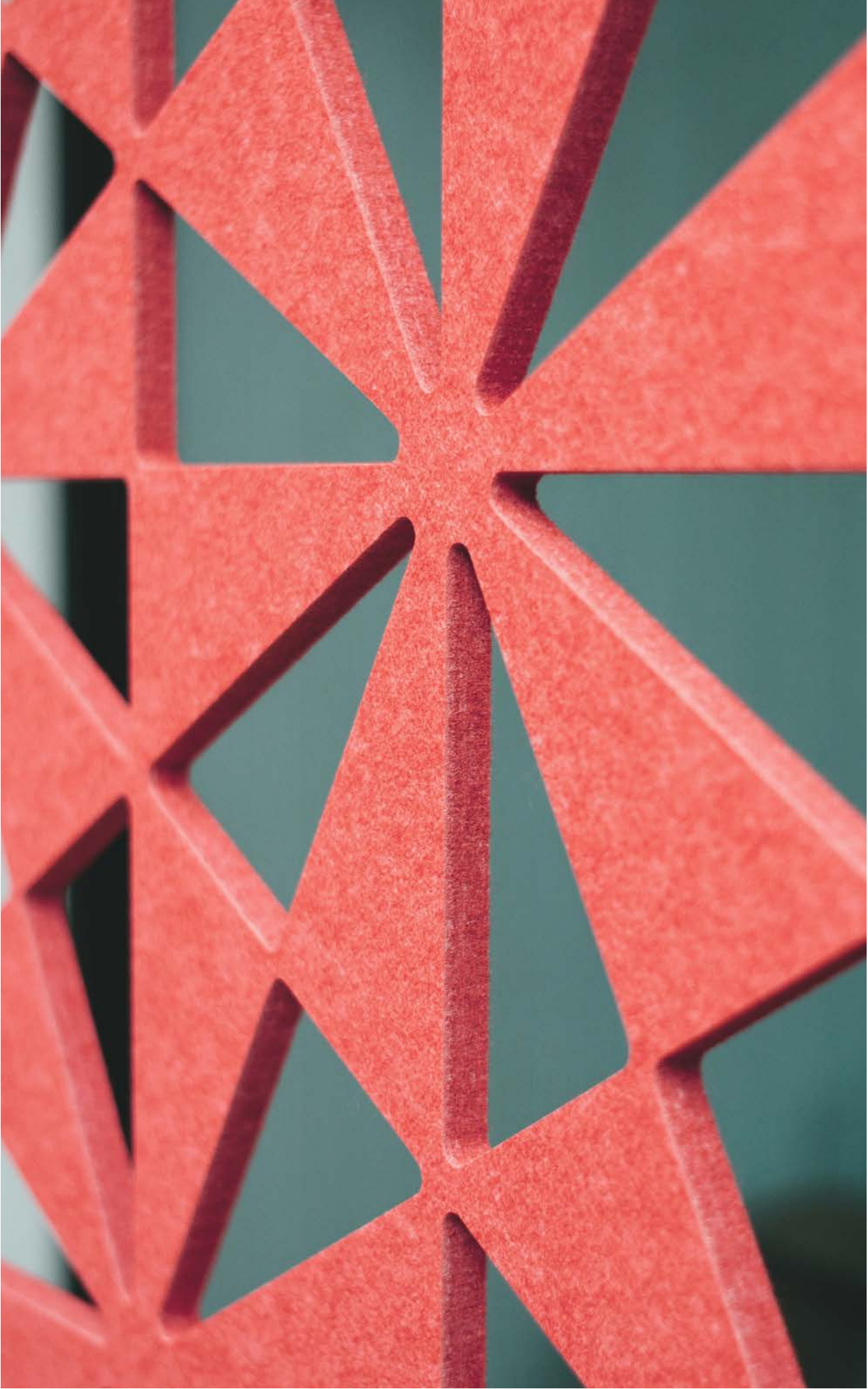
Design S16 more colours available



Design S17 more colours available



Design S18 more colours available



● Cascade S16 Static Screens
in Ironbank

● Material Creative,
New Zealand



● Custom Cascade Static Screens
in Flatiron

● Katsubi,
New Zealand



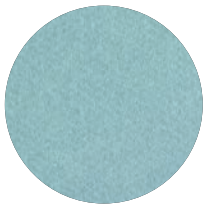
Customisation

As creators and innovators, we understand your pursuit of the bold and unusual, the rare and exceptional—the brave, colour-outside-the-lines ideas. Every space you design is unique, therefore, every element—from floor to ceiling—should be tailored to fit. Our customisation tools offer unique avenues for creative expression to help you achieve your vision—all that's left to explore are the boundaries of your imagination.

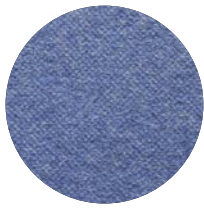
Our customisation capabilities include Print, Etch™, Groove, Precision Cut, Mould and Press, and Peel 'n' Stick.

To find out more about Cascade visit www.autexglobal.com

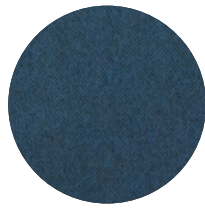
Colour options



Falling Water



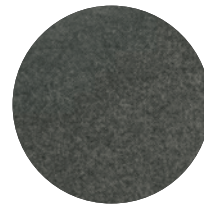
Galaxy



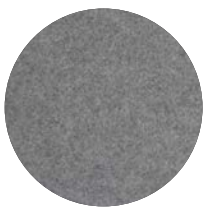
Pinnacle



Petronas



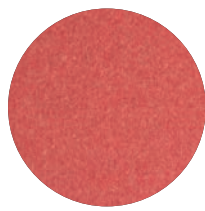
Empire



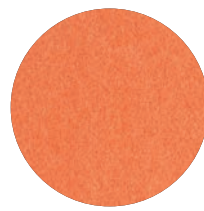
Flatiron



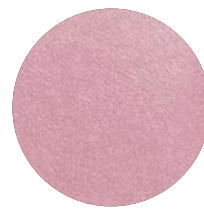
Savoye



Ironbank



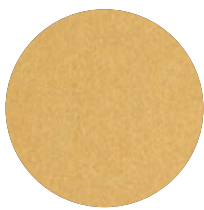
Zenith



Rosada



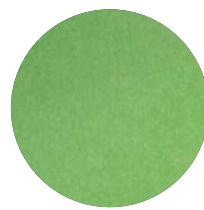
Opera



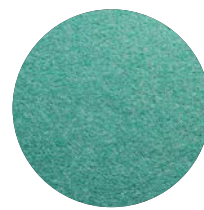
Senado



Acros



Bosco



Lotus



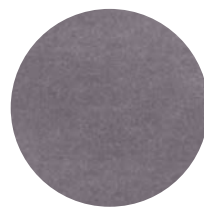
Tree House



Gherkin



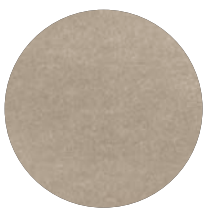
Muralla



Cavalier



Beehive



Parthenon



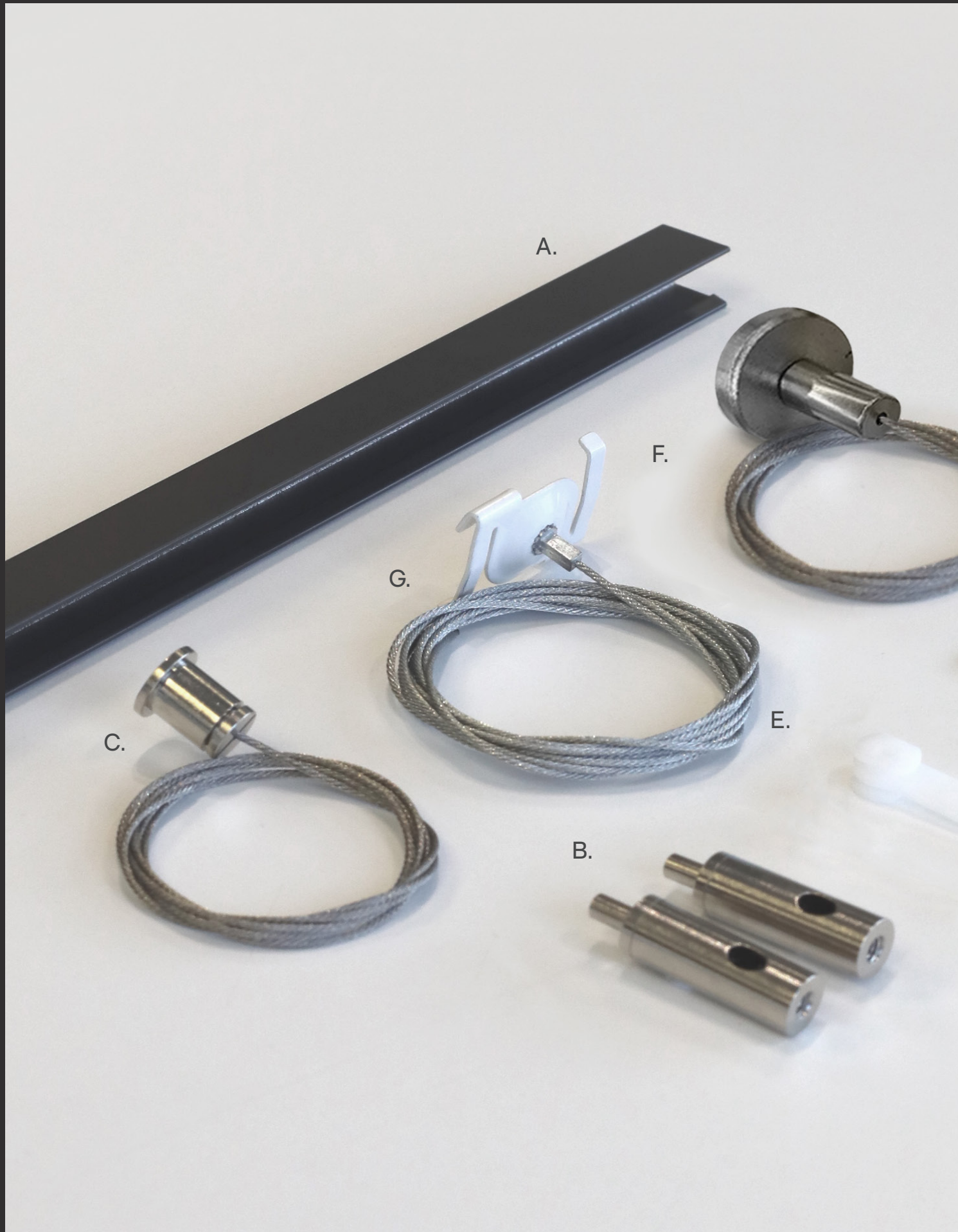
Sargazo





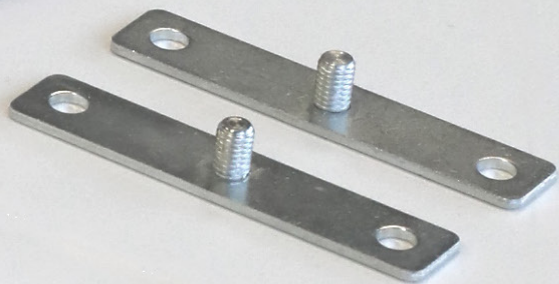
● Cascade S13 Static Screens
in Ironbank

● Autex Acoustics,
New Zealand



Cascade™ suspension kit

D.



Each Cascade screen is supplied with one standard suspension kit for top suspension. All available suspension kit parts are pictured to the left. Additional parts are available for other install methods, detailed on the following page.

Please note that there are two Cascade Expanding Screens per pack, so you will receive two suspension kits.

Parts supplied per screen

Frontier™ Channel (A)

Part Number: RAFNEXPC1212

Attachment Set (B,2xC,D)

Part Number: RAHVAS

Additional parts

Clips (E)

Part Number: RAFTCC

Suspension Magnet (F)

Part Number: RAMALS1

Ceiling Grid Hanger (G)

Part Number: RADCLS12

To find out more about Cascade
visit www.autexglobal.com

Installation options

Suspended top
free hanging base



No additional parts required

Suspended top
suspended base



Additional parts required
(per screen)

- 1 RAFNEXPC1212
- 1 RAHVAS

*Does not apply to design S8

Suspended top
direct fix base



Additional parts required
(per screen)

- 1 RAFNEXPC1212
- 1 RAFTCC

*Does not apply to design S8

Direct fixed top
suspended base



Additional parts required
(per screen)

- 1 RAFNEXPC1212
- 3 RAFTCC

*Does not apply to design S8

Direct fixed top
direct fixed base



Additional parts required
(per screen)

- 1 RAFNEXPC1212
- 6 RAFTCC

*Does not apply to design S8

Direct fixed top
free hanging base



Additional parts required
(per screen)

- 3 RAFTCC



● Cascade S8 Static Screen
in Falling Water and Pinnacle

● Equinox Evolution,
Australia





Caring for the environment

Cascade is manufactured using 100% polyester fibre and contains a minimum of 60% recycled fibre (from PET plastics). Our products are designed to be recycled at the end of their life too.

We have continual improvement programmes in which we implement a range of initiatives to mitigate the environmental 'hotspots' that we have identified. Our products are GreenRate Level A, Health Product Declaration (HPD), and CDHP Standard certified.

Cascade is made from Cube which is DeclareSM certified to be Red List free and can be used in Living Building Challenge projects. Autex has a high functioning Environmental Management System (ISO 14001) to enhance our environmental performance and contribute to sustainable development..



● **Autex Industries Ltd**

702-718 Rosebank Rd
Private Bag 19988
Avondale 1746, Auckland
New Zealand
Freephone 0800 428 839
Phone +64 9 828 9179
Fax +64 9 828 5810

● **Autex Australia Pty Ltd**

166 Bamfield Road
PO Box 5099
West Heidelberg, Melbourne
VIC 3081, Australia
Freephone 1800 678 160
Phone +61 3 9457 6700
Fax +61 3 9457 1020

● **Autex Acoustics Ltd**

Unit J4, Lowfields Way,
Lowfields Business Park,
Elland, West Yorkshire
Hx5 9Da
United Kingdom
Phone +44 0 1422418899

● **Autex Acoustics LLC**

19350 Van Ness Avenue
Torrance, CA 90501
United States of America
Phone +1 424 203 1813

An ISO 9001, ISO 14001 and ISO 45001 certified company. The brand names and logos mentioned herein are registered or unregistered trademarks either owned or used under license by Autex Industries Limited or other members of the Autex Group. The contents of this document are protected by Copyright 2021 Autex Industries Ltd. All Rights Reserved. It is the user's responsibility to determine if the product and information presented in this document is suitable for the intended application by engaging a suitably qualified consultant. The information contained in this document is correct to the best of our knowledge at the date of its publication. To verify that this document is the most current publication please check our website or contact your Autex account manager.