



Groove

● Custom Groove  
in Pavilion

● Jarden Commercial Bay,  
New Zealand





## A dash of personality

Groove is a customisation tool; a series of precise, angular cuts designed to tactfully bend and distort light. From subtle patterns to hinges and joins for 3D sculptures, our Groove customisation allows you to explore the realms of possibility within the world of acoustic panels—adding depth, nuance, and texture to interior spaces.

To find out more about Groove  
visit [www.autexglobal.com](http://www.autexglobal.com)





#### Features and benefits

- Six pattern suggestions
- Endless customisation options
- Available on both 12 mm and 24 mm Cube™ panels
- Five angles (30° standard angle)
- Peel 'n' Stick backing
- Bevelled edge for consistent joins

#### Applications

- Decorative customisation for ceilings and walls in interior spaces



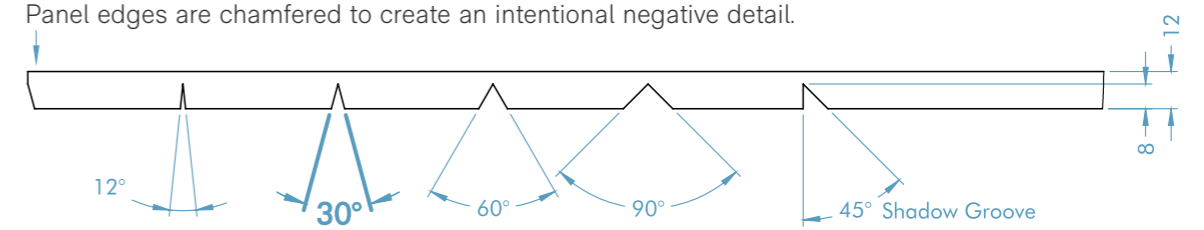


## Detail options

Groove offers a selection of five angled cuts, each used to create a different pattern style and finish. Our standard angle is 30°, however you can choose from any of the five angles when specifying.

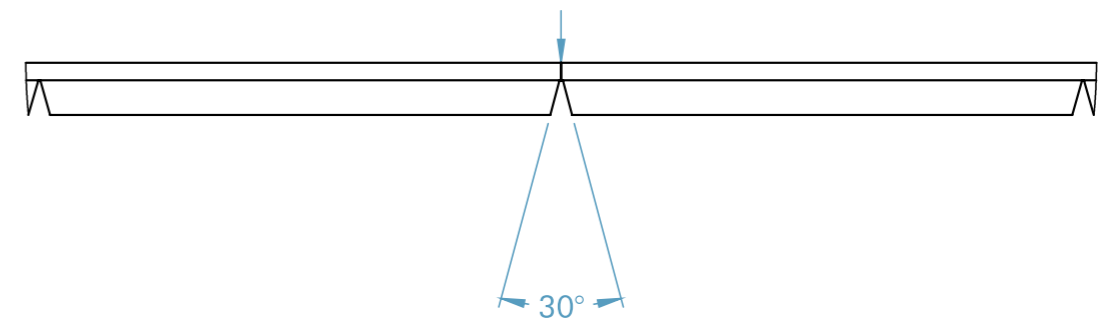
### Groove details

Panel edges are chamfered to create an intentional negative detail.



### Panel join details

Negative detail in panel join

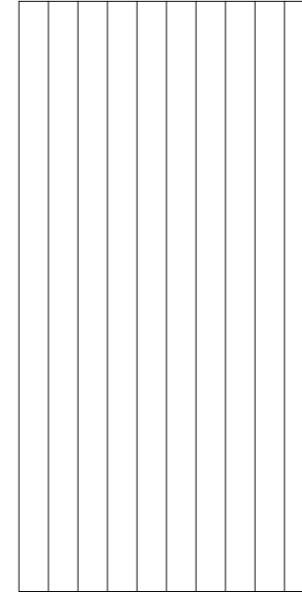




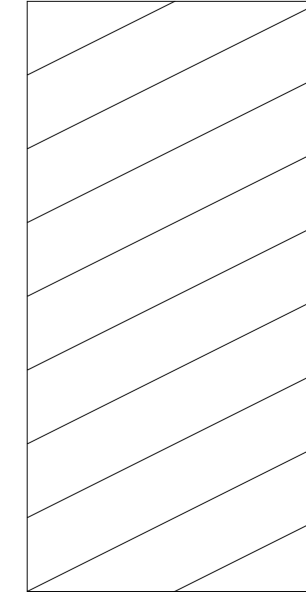


## Pattern suggestions

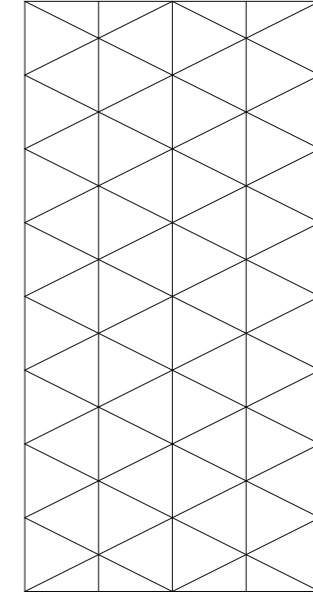
Choose from our range of pattern suggestions, or create your own bespoke design.



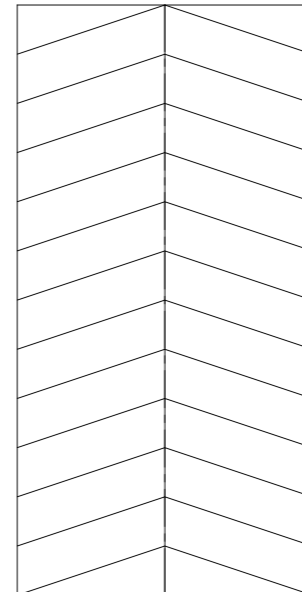
V1



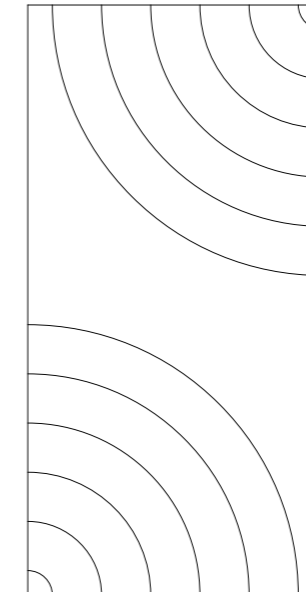
V2



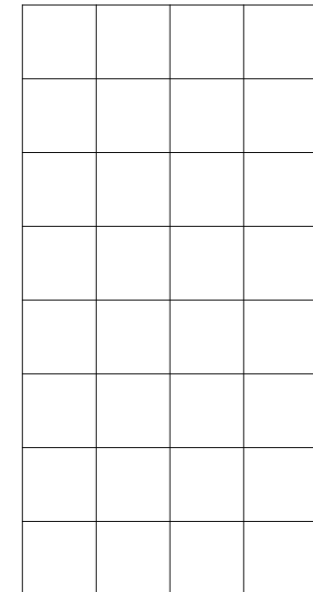
V3



V4



V5

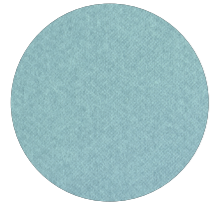


V6

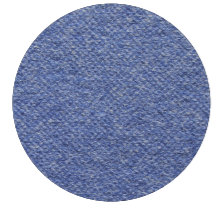
For information on spacing measurements between grooves please contact your account manager.



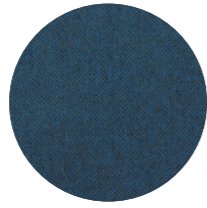
# Colour options



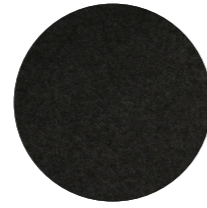
Falling Water



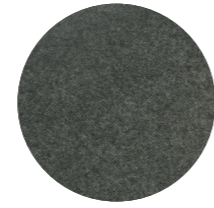
Galaxy



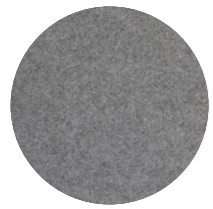
Pinnacle



Petronas



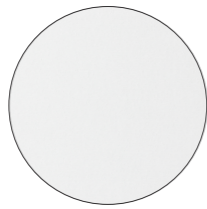
Empire



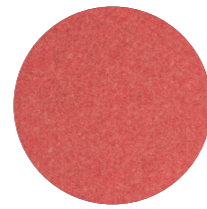
Flatiron



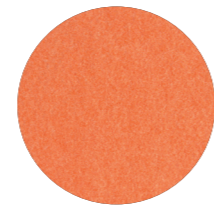
Savoye



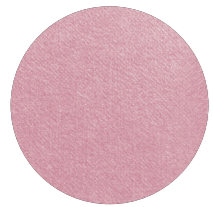
Pavilion



Ironbank



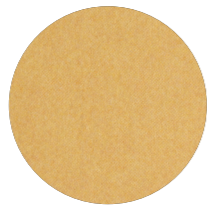
Zenith



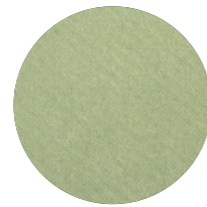
Rosada



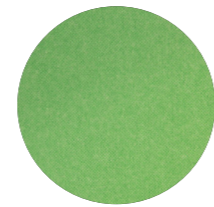
Opera



Senado



Acros



Bosco



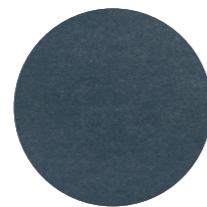
Lotus



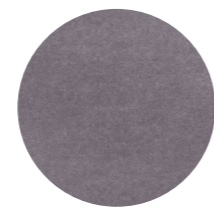
Tree House



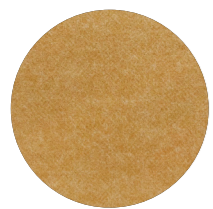
Gherkin



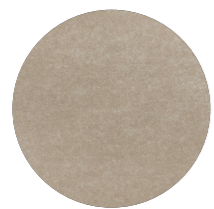
Muralla



Cavalier



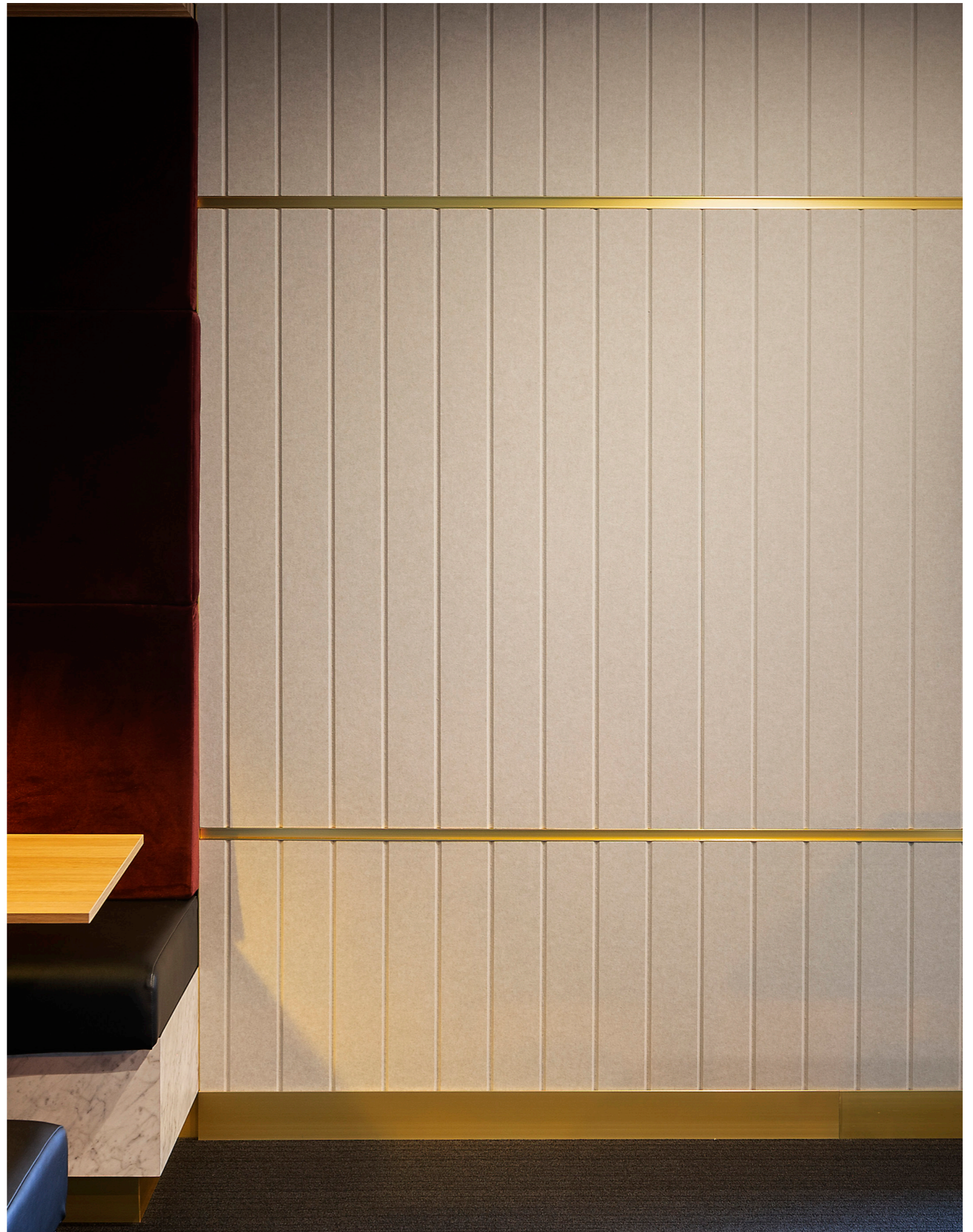
Beehive



Parthenon



Sargazo





## Customisation

As creators and innovators, we understand your pursuit of the bold and unusual, the rare and exceptional—the brave, colour-outside-the-lines ideas. Every space you design is unique, therefore, every element— from floor to ceiling—should be tailored to fit. With five different degrees of v-groove—12°, 30°, 45°, 60°, and 90°—the clean, precise cuts can create anything from subtle patterns to 3D sculptures. For details on how to specify custom Groove, refer to the Groove Information Sheet.







## Caring for the environment

Cube is manufactured using 100% polyester fibre and contains a minimum of 60% recycled fibre (from PET plastics). Our products are designed to be recycled at the end of their life too.

We have continual improvement programmes in which we implement a range of initiatives to mitigate the environmental 'hotspots' that we have identified. Our products are GreenRate Level A, Health Product Declaration (HPD), and CDHP Standard certified.

Cube is DeclareSM certified to be Red List free and can be used in Living Building Challenge projects. Autex has a high functioning Environmental Management System (ISO 14001) to enhance our environmental performance and contribute to sustainable development.



Declare.





● **Autex Industries Ltd**

702-718 Rosebank Rd  
Private Bag 19988  
Avondale 1746, Auckland  
New Zealand  
Freephone 0800 428 839  
Phone +64 9 828 9179  
Fax +64 9 828 5810

● **Autex Australia Pty Ltd**

166 Bamfield Road  
PO Box 5099  
West Heidelberg, Melbourne  
VIC 3081, Australia  
Freephone 1800 678 160  
Phone +61 3 9457 6700  
Fax +61 3 9457 1020

● **Autex Acoustics Ltd**

Unit J4, Lowfields Way,  
Lowfields Business Park,  
Elland, West Yorkshire  
Hx5 9Da  
United Kingdom  
Phone +44 0 1422418899

● **Autex Acoustics LLC**

1630 Dan Kipper Dr,  
Riverside, CA 92507  
United States of America  
Phone +1 424 203 1813

An ISO 9001, ISO 14001 and ISO 45001 certified company. The brand names and logos mentioned herein are registered or unregistered trademarks either owned or used under license by Autex Industries Limited or other members of the Autex Group. The contents of this document are protected by Copyright 2021 Autex Industries Ltd. All Rights Reserved. It is the user's responsibility to determine if the product and information presented in this document is suitable for the intended application by engaging a suitably qualified consultant. The information contained in this document is correct to the best of our knowledge at the date of its publication. To verify that this document is the most current publication please check our website or contact your Autex account manager.