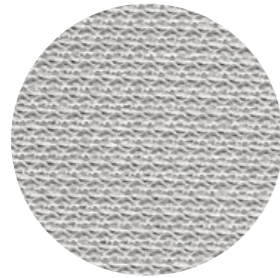


Fabrics

Tessuti

CATEGORY B / CATEGORIA B



B 01



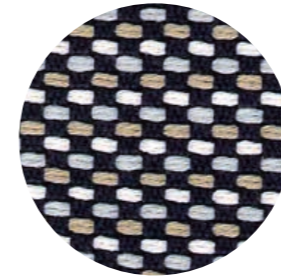
B 02

technical specifications / specifiche tecniche

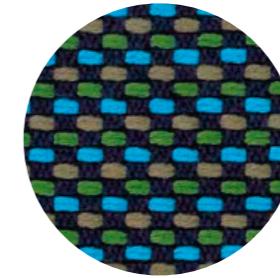


- **COMPOSITION / COMPOSIZIONE**
100% Nylon (Support film PVC)
- **ABRASION / ABRASIONE**
>50.000 cycles, Martindale (UNI EN ISO 12947:00)
- **RUBBING FASTNESS / SOLIDITÀ ALLO SFREGAMENTO**
5, scale 1-5 (UNI EN ISO 105 X12:97)
- **PILLING**
5, scale 1-5 (UNI EN ISO 12945-2:00)
- **LIGHT FASTNESS / SOLIDITÀ ALLA LUCE**
5, scale 1-8 (UNI EN ISO 105-B02:01)

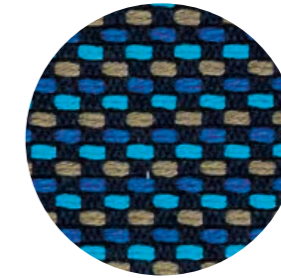
CATEGORY C / CATEGORIA C



C 37



C 38



C 39



C 36

technical specifications / specifiche tecniche

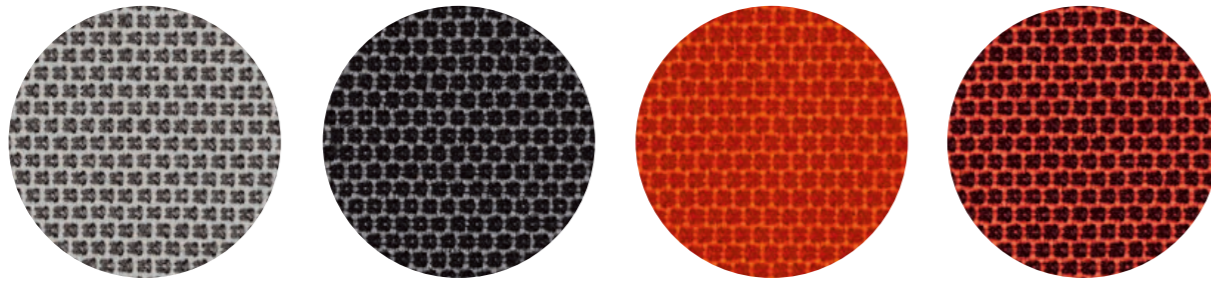


- **COMPOSITION / COMPOSIZIONE**
94% Cotton
6% Polyamide
- **ABRASION / ABRASIONE**
40.000 cycles, Martindale (BS EN ISO 12947-2 1999)
- **RUBBING FASTNESS / SOLIDITÀ ALLO SFREGAMENTO**
Dry 4-5 and Wet 2-3, scale 1-5 (BS EN ISO 105-X12:1995)
- **PILLING**
4, scale 1-5 (BS EN ISO 12945-2:2001 to 5.000 cycles)
- **LIGHT FASTNESS / SOLIDITÀ ALLA LUCE**
4-5 (light colours)
5 (medium-dark colours) (BS EN ISO 105-B02:2001)

only for collection / solo per collezione



Island

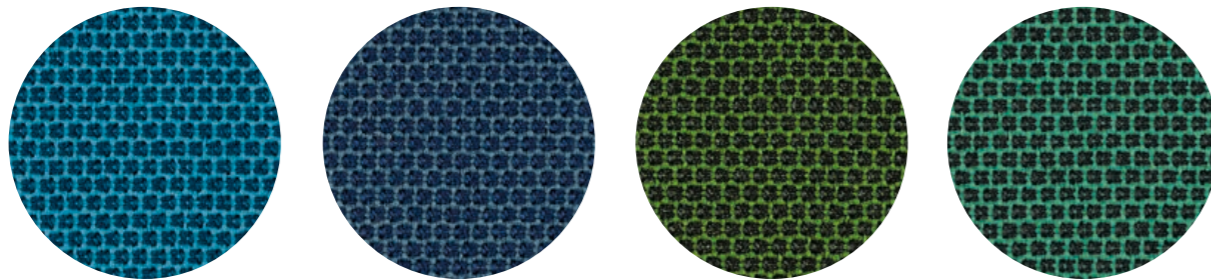


C 101

C 86

C 85

C 89



C 83

C 100

C 84

C 88



C 87

technical specifications / specifiche tecniche

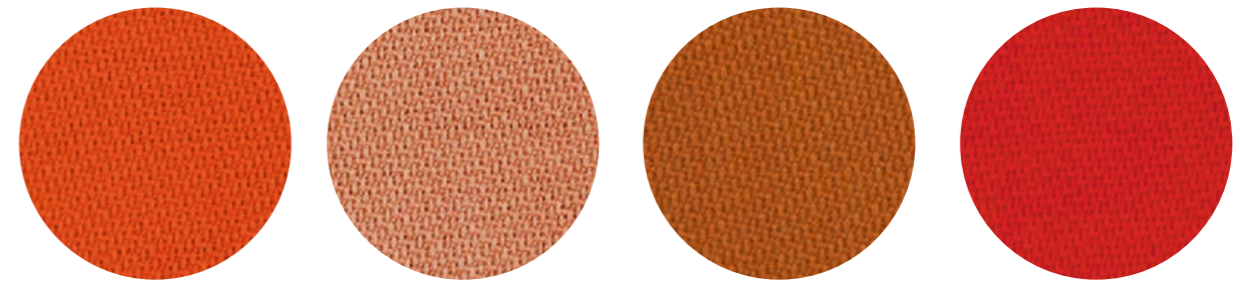


- **COMPOSITION / COMPOSIZIONE**
54% New Zealand Wool
44% Post-consumer recycled, polyester
2% Polyamide
- **ABRASION / ABRASIONE**
100.000 cycles, Martindale
(EN ISO 12947-2)

- **RUBBING FASTNESS / SOLIDITÀ ALLO SFREGAMENTO**
Dry and Wet 4-5, scale 1-5
(EN ISO 105-X12:1995)
- **PILLING**
4-5, scale 1-5 (EN ISO 12945-2)
- **LIGHT FASTNESS / SOLIDITÀ ALLA LUCE**
5-7, scale 1-8 (EN ISO 105-B02)

- **FLAME RESISTANCE**
RESISTENZA AL FUOCO
BS EN 1021 1&2
BS EN 1021-1
BS 5852 Part 1 0, 1
US CA TB 117-2013

- APPROVED / OMOLOGATO

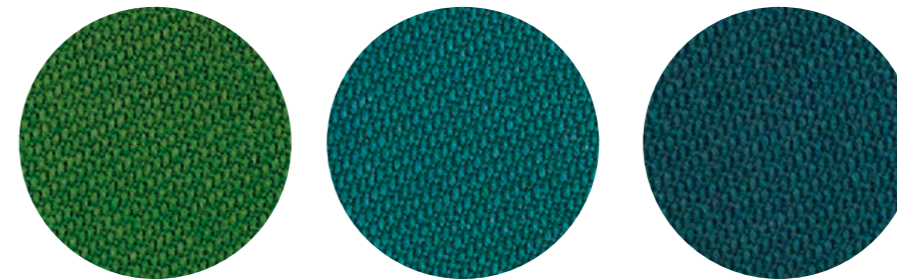


C 110

C 111

C 112

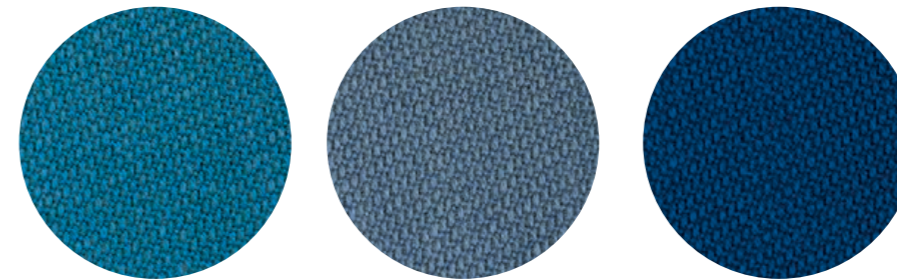
C 113



C 117

C 118

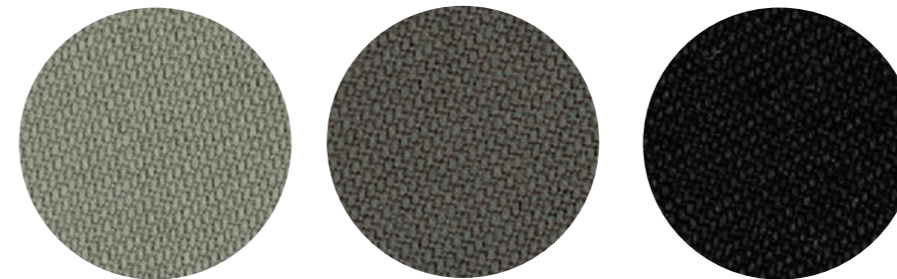
C 119



C 120

C 121

C 122



C 114

C 115

C 116

technical specifications / specifiche tecniche

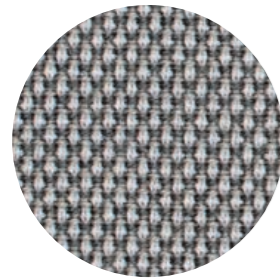
- APPROVED / OMOLOGATO



- **COLLECTION / COLLEZIONE**
svensson-SEMI
- **COMPOSITION / COMPOSIZIONE**
85% Wool, 15% Polyamide
- **ABRASION / ABRASIONE**
100.000 cycles,
Martindale
(EN ISO 12947-2)
- **RUBBING FASTNESS**
SOLIDITÀ ALLO SFREGAMENTO
Dry 4 and Wet 3-4, scale 1-5
(EN ISO 105-X12)
- **LIGHT FASTNESS**
SOLIDITÀ ALLA LUCE
5-7, scale 1-8
(EN ISO 105-B02)
- **FLAME RESISTANCE / RESISTENZA AL FUOCO**
BS 5852 Crib 5
EN ISO 1021 Part 1&2
IMO FTP Code 2010: Part 8
UNI 9175 e UNI 9175/FA1 Classe 1 IM



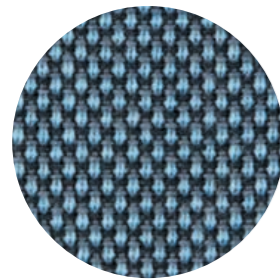
CATEGORY D / CATEGORIA D



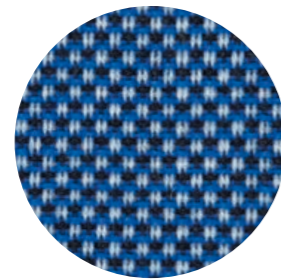
D 40



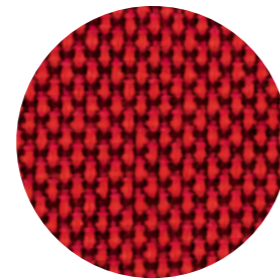
D 41



D 43



D 44



D 42

technical specifications / specifiche tecniche

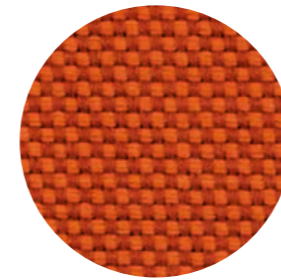


- **COMPOSITION / COMPOSIZIONE**
88% New Zealand Wool
12% Polyamide
- **ABRASION / ABRASIONE**
100.000 cycles, Martindale
(EN ISO 12947-2)
- **RUBBING FASTNESS / SOLIDITÀ ALLO SFREGAMENTO**
Dry and Wet 4-5, scale 1-5
(EN ISO 105-X12)
- **PILLING**
4-5, scale 1-5 (EN ISO 12945-2)
- **LIGHT FASTNESS / SOLIDITÀ ALLA LUCE**
5-7, scale 1-8 (EN ISO 105-B02)
- **FLAME RESISTANCE / RESISTENZA AL FUOCO**
BS EN 1021 1&2
BS 5852 Part 1 0, 1
UNI 9175 Classe 1 IM
US CA TB 117-2013

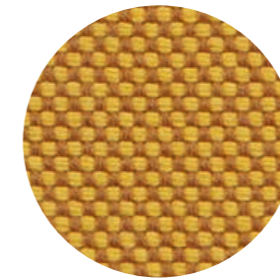
- APPROVED / OMOLOGATO



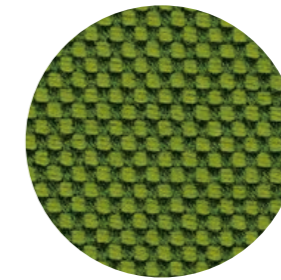
CATEGORY G / CATEGORIA G



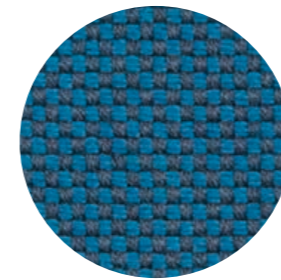
G 170



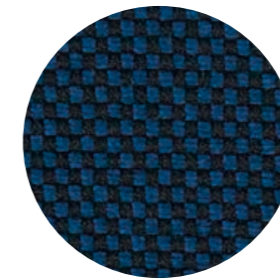
G 171



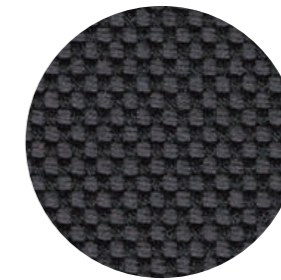
G 172



G 173



G 174



G 175



G 176

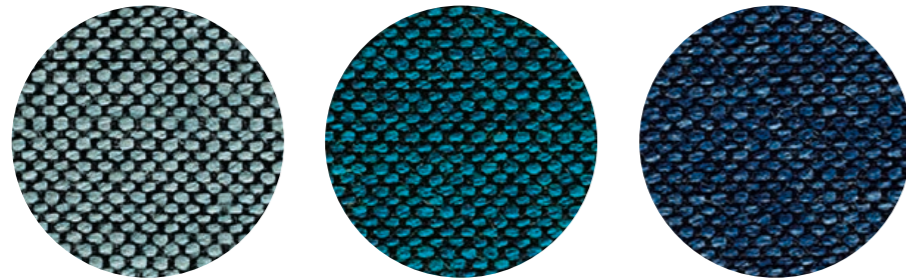
technical specifications / specifiche tecniche



- **COMPOSITION / COMPOSIZIONE**
96% Virgin Wool
4% Polyamide
- **ABRASION / ABRASIONE**
90.000 cycles, Martindale
(DIN EN ISO 12947-2)
- **PILLING**
4-5, scale 1-5 (EN ISO 12945-2)
- **LIGHT FASTNESS / SOLIDITÀ ALLA LUCE**
5-8, scale 1-8 (EN ISO 105-B02)
- **SOUND ABSORPTION / ASSORBIMENTO ACUSTICO**
folded: $\alpha_w = 0.95$ Class A (ISO 11654)
- **FLAME RESISTANCE / RESISTENZA AL FUOCO**
BS 5852:1979 (Part 1)
BS 5852:2006 (Part 2) Crib 5
DIN 4102-1 B2
- **EN 13501-1**
EN 1021 -1 and -2
FAR 25.853 (12 sec. vertical)
IMO: 2014/90/EU (MED)
US CA TB 117-2013

- APPROVED / OMOLOGATO

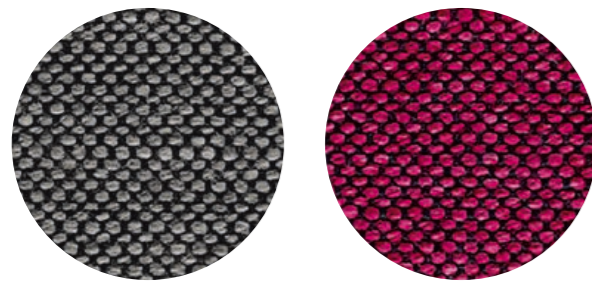




G 154

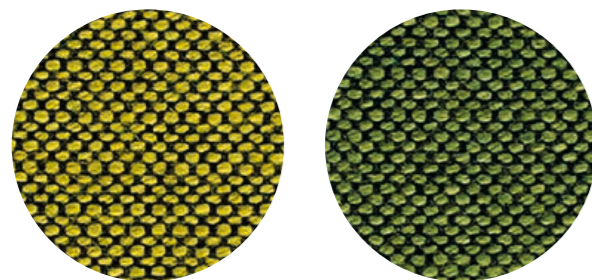
G 155

G 156



G 151

G 150



G 152

G 153

technical specifications / specifiche tecniche

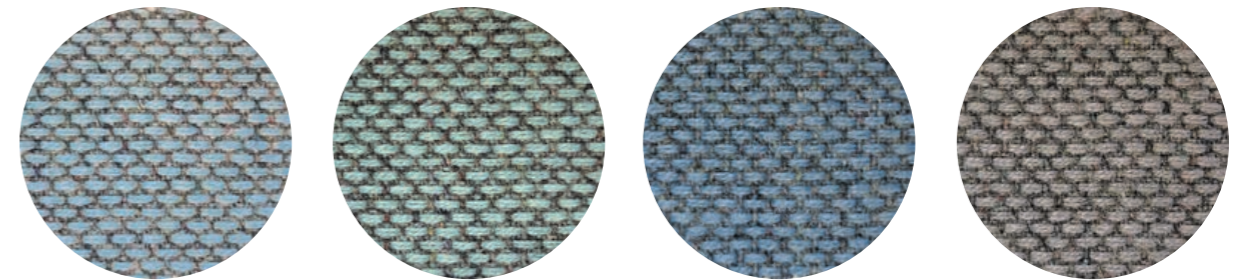


- COLLECTION / COLLEZIONE
svensson - BALANCE
- COMPOSITION / COMPOSIZIONE
82% Wool
12% Rami
6% Polyamide

- ABRASION / ABRASIONE
100.000 cycles, Martindale (EN ISO 12947-2)
- RUBBING FASTNESS / SOLIDITÀ ALLO SFREGAMENTO
Dry 4 and Wet 3-4, scale 1-5
(EN ISO 105-X12)
- LIGHT FASTNESS / SOLIDITÀ ALLA LUCE
5-7, scale 1-8 (EN ISO 105-B02)

- FLAME RESISTANCE / RESISTENZA AL FUOCO
BS 5852 Crib 5
EN ISO 1021 Part 1&2
IMO FTP Code 2010: Part 8
UNI 9175 Classe 1 IM
US CA TB 117-2013

- APPROVED / OMOLOGATO

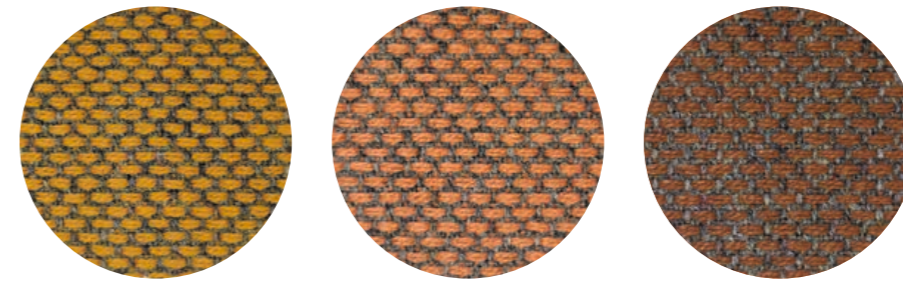


G 143

G 145

G 144

G 146



G 140

G 141

G 142

technical specifications / specifiche tecniche



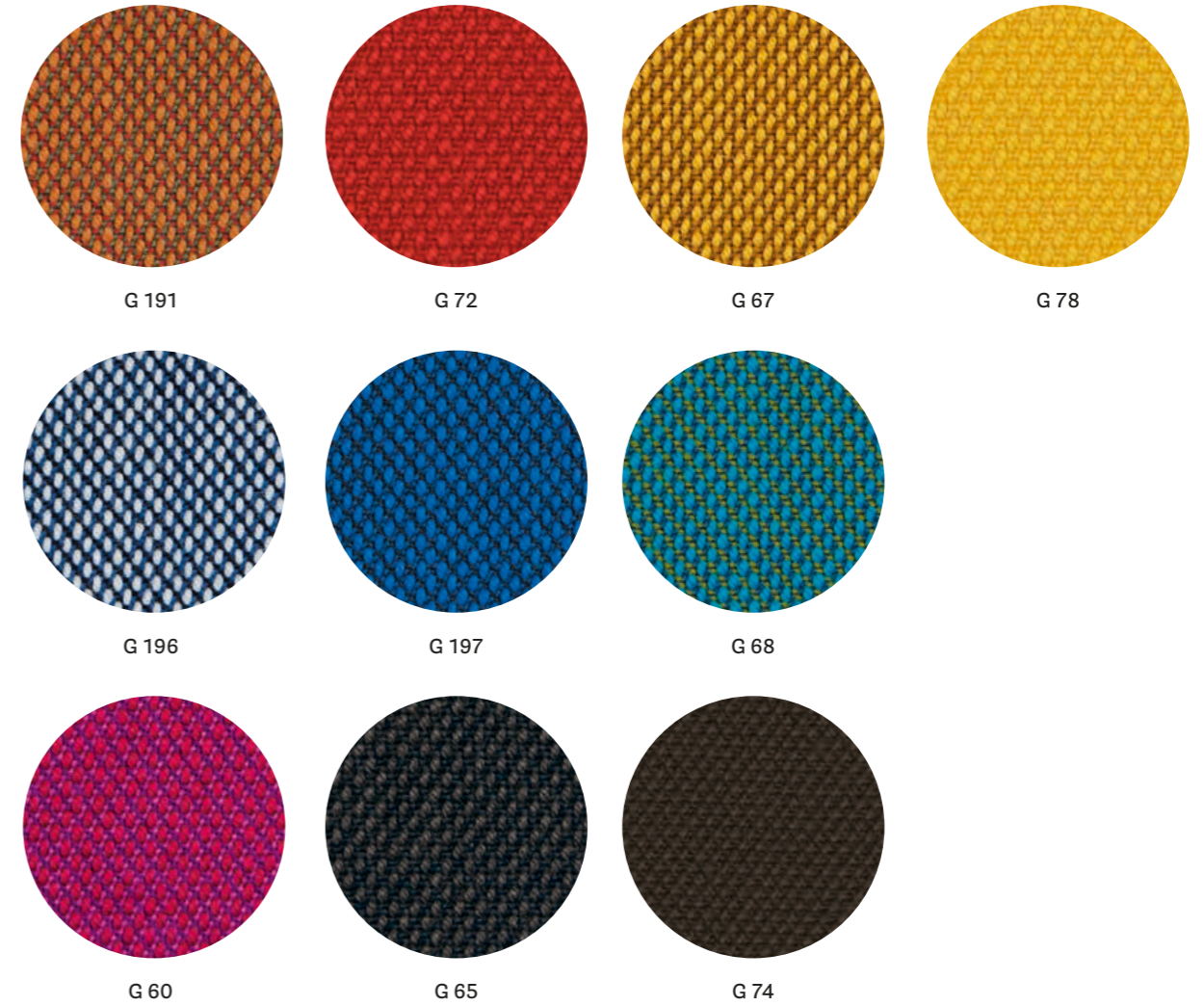
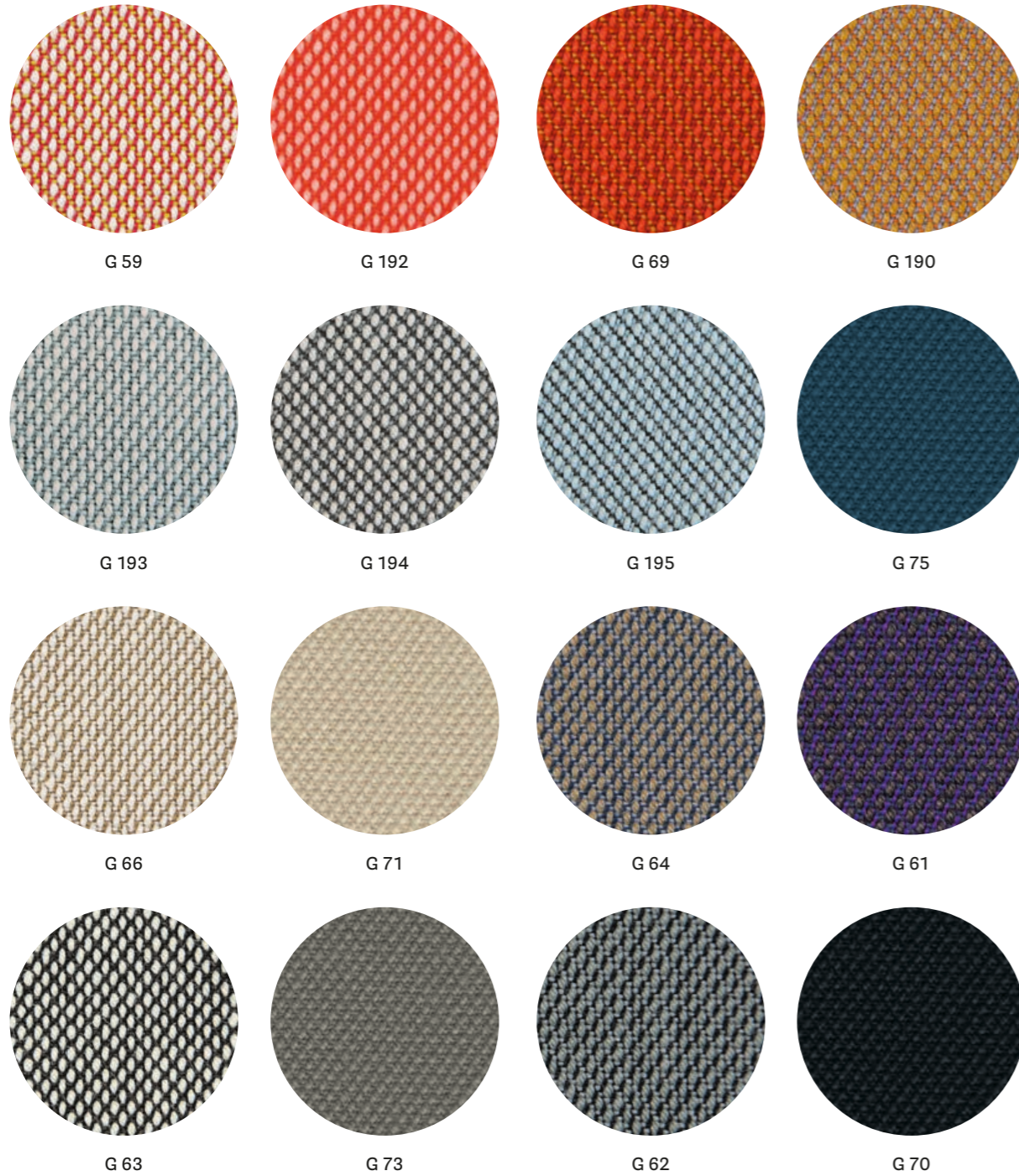
- COLLECTION / COLLEZIONE
kvadrat - RE-WOOL
DESIGNER Margrethe Odgaard
- COMPOSITION / COMPOSIZIONE
45% Recycled wool
45% New wool
10% Nylon
- ABRASION / ABRASIONE
50.000 cycles, Martindale
(DS/EN ISO 12947-2:2016)

- RUBBING FASTNESS / SOLIDITÀ ALLO SFREGAMENTO
Dry and Wet 4-5, scale 1-5
(ISO 105-X12)
- PILLING
4, scale 1-5 (EN ISO 12945)
- LIGHT FASTNESS / SOLIDITÀ ALLA LUCE
5-7, scale 1-8 (ISO 105-B02:2014)
- SOUND ABSORPTION / ASSORBIMENTO ACUSTICO
folded: $\alpha_w = 0.75$ Class C (ISO 11654)

- FLAME RESISTANCE / RESISTENZA AL FUOCO
AS/NZS 1530.3
BS 5852 Part 1
BS 5852 Crib 5 with treatment
BS 5852 IGNITION SOURCE 3
EN 1021 - 1/2
IMO FTP Code 2010: Part 8
NF D60-013
ÖNORM B1/Q1
UNI 9175 Classe 1IM
US CA TB 117-2013

- APPROVED / OMOLOGATO





technical specifications / specifiche tecniche



• COLLECTION / COLLEZIONE

kvadrat

STEELCUT TRIO 3

except

G61, G60, G68: STEELCUT TRIO 2

G70+G78: STEELCUT 2

DESIGNERS Dijkmeijer & Ridolfo

• COMPOSITION / COMPOSIZIONE

90% New wool

10% Nylon

• ABRASION / ABRASIONE

100.000 cycles,

for G70+G78: 80.000 cycles

Martindale (DS/EN ISO 12947-2:2016)

• PILLING

4, scale 1-5

for G70+G78: 3-4, scale 1-5

(EN ISO 12945)

• LIGHT FASTNESS / SOLIDITÀ ALLA LUCE

5-7, scale 1-8 (EN ISO 105-B02)

• SOUND ABSORPTION / ASSORBIMENTO ACUSTICO

folded: $\alpha_w = 0.95$ Class A

for G70+G78: folded: $\alpha_w = 0.80$ Class B

(ISO 11654)

• FLAME RESISTANCE / RESISTENZA AL FUOCO

AS/NZS 1530.3

AS/NZS 3837 Class 2

BS 5852 Part 1

BS 5852 Crib 5 with treatment

DIN 4102 B2

EN 1021 - 1/2

IMO FTP Code 2010: Part 8

NF D60-013

NFPA 260

ÖNORM B1/Q1

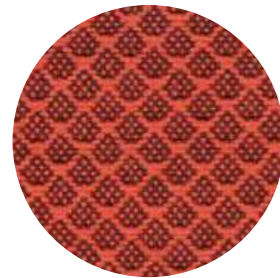
SN 198 898 5.3 with treatment

UNI 9175 Classe 1 IM

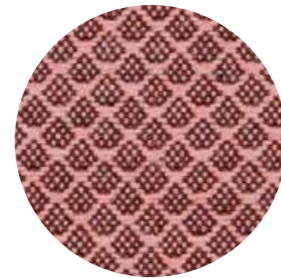
US CA TB 117-2013

• APPROVED / OMOLOGATO





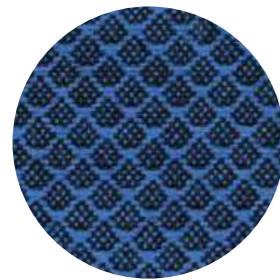
G 200



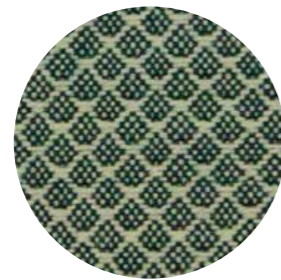
G 201



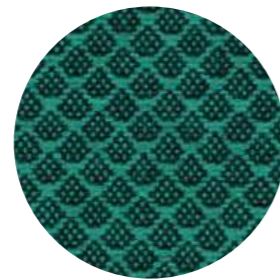
G 202



G 203



G 204



G 205

technical specifications / specifiche tecniche

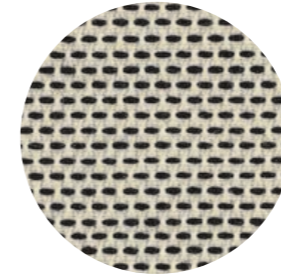


- COLLECTION / COLLEZIONE
kvadrat - JAALI
DESIGNER Doshi Levien
- COMPOSITION / COMPOSIZIONE
92% New wool
8% Nylon
- ABRASION / ABRASIONE
80.000 cycles, Martindale
(EN ISO 12947)

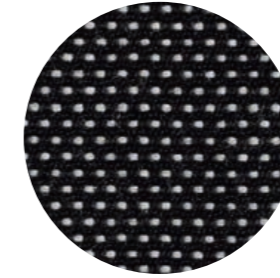
- RUBBING FASTNESS / SOLIDITÀ ALLO SFREGAMENTO
Dry 4-5 and Wet 3-5, scale 1-5
(ISO 105-X12)
- PILLING
4, scale 1-5 (EN ISO 12945)
- LIGHT FASTNESS / SOLIDITÀ ALLA LUCE
6-7, scale 1-8 (ISO 105-B02)

- FLAME RESISTANCE / RESISTENZA AL FUOCO
AS/NZS 1530.3
BS 5852 Part 1
BS 5852 Crib 5 with treatment
BS 5852 ignition source 3
EN 1021-1/2
IMO FTP Code 2010: Part 8
NF D60-013
SN 198 898 5.3 with treatment
UNI 9175 Classe 1IM
US CA TB 117-2013

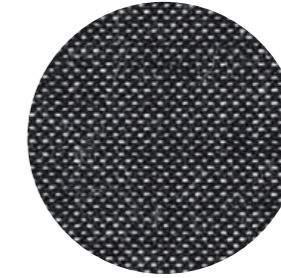
- APPROVED / OMOLOGATO



G 101



G 100



G 102

technical specifications / specifiche tecniche



- COLLECTION / COLLEZIONE
kvadrat - BASEL
DESIGNERS Herzog & de Meuron
- COMPOSITION / COMPOSIZIONE
90% New wool
10% Nylon
- ABRASION / ABRASIONE
50.000 cycles,
Martindale (EN ISO 12947-2:1998)

- PILLING
4, scale 1-5 (EN ISO 12945)
- LIGHT FASTNESS / SOLIDITÀ ALLA LUCE
6-7, scale 1-8 (ISO 105-B02)
- FLAME RESISTANCE / RESISTENZA AL FUOCO
AS/NZS 3837 Class 2
BS 5852 Part 1
BS 5852 Crib 5 with treatment

- DIN 4102 B2
EN 1021 - 1/2
IMO FTP Code 2010: Part 8
NFPA 260
NF D60-013
ÖNORM B1/Q1
SN 198 898 5.3 with treatment
UNI 9175 Classe 1 IM
US CA TB 117-2013

- APPROVED / OMOLOGATO





G 120



G 121



G 122

technical specifications / specifiche tecniche



• COLLECTION / COLLEZIONE

kvadrat - MOLLY 2
DESIGNER Åsa Pärson

• COMPOSITION / COMPOSIZIONE

100% New wool

• ABRASION / ABRASIONE

75-100.000 cycles,
Martindale (EN ISO 12947-2:1998)

• PILLING

3-4, scale 1-5 (EN ISO 12945)

• LIGHT FASTNESS / SOLIDITÀ ALLA LUCE

6-7, scale 1-8 (ISO 105-B02)

• FLAME RESISTANCE / RESISTENZA AL FUOCO

BS 5852 Part 1
BS 5852 Crib 5 with treatment
DIN 4102 B2

EN 1021 - 1/2

IMO FTP Code 2010: Part 8

NFPA 260

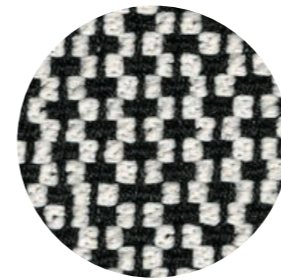
NF D60-013

ÖNORM B1/Q1

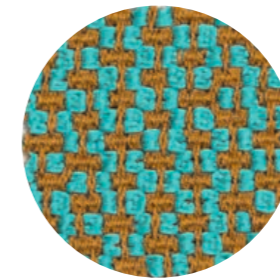
UNI 9175/UNI 9176 Classe 1 IM

US CA TB 117-2013

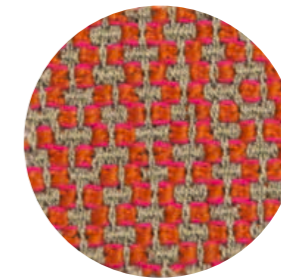
• APPROVED / OMOLOGATO



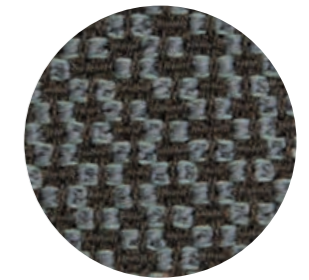
G 130



G 131



G 132



G 133

technical specifications / specifiche tecniche



• COMPOSITION / COMPOSIZIONE

95% Virgin Wool
5% Polyamide

• ABRASION / ABRASIONE

52.000 cycles, Martindale
(DIN EN ISO 12947-2)

• PILLING

4-5, scale 1-5 (EN ISO 12945-2)

• LIGHT FASTNESS / SOLIDITÀ ALLA LUCE

5-8, scale 1-8 (EN ISO 105-B02)

• SOUND ABSORPTION / ASSORBIMENTO ACUSTICO

folded: $\alpha_w = 0.85$ Class B (ISO 11654)

• FLAME RESISTANCE / RESISTENZA AL FUOCO

BS 5852:1979 (Part 1)
BS 5852:2006 (Part 2) Crib 5
DIN 4102-1 B2

EN 1021 -1 and -2

EN 13501-1

FAR 25.853 (12 sec. vertical)

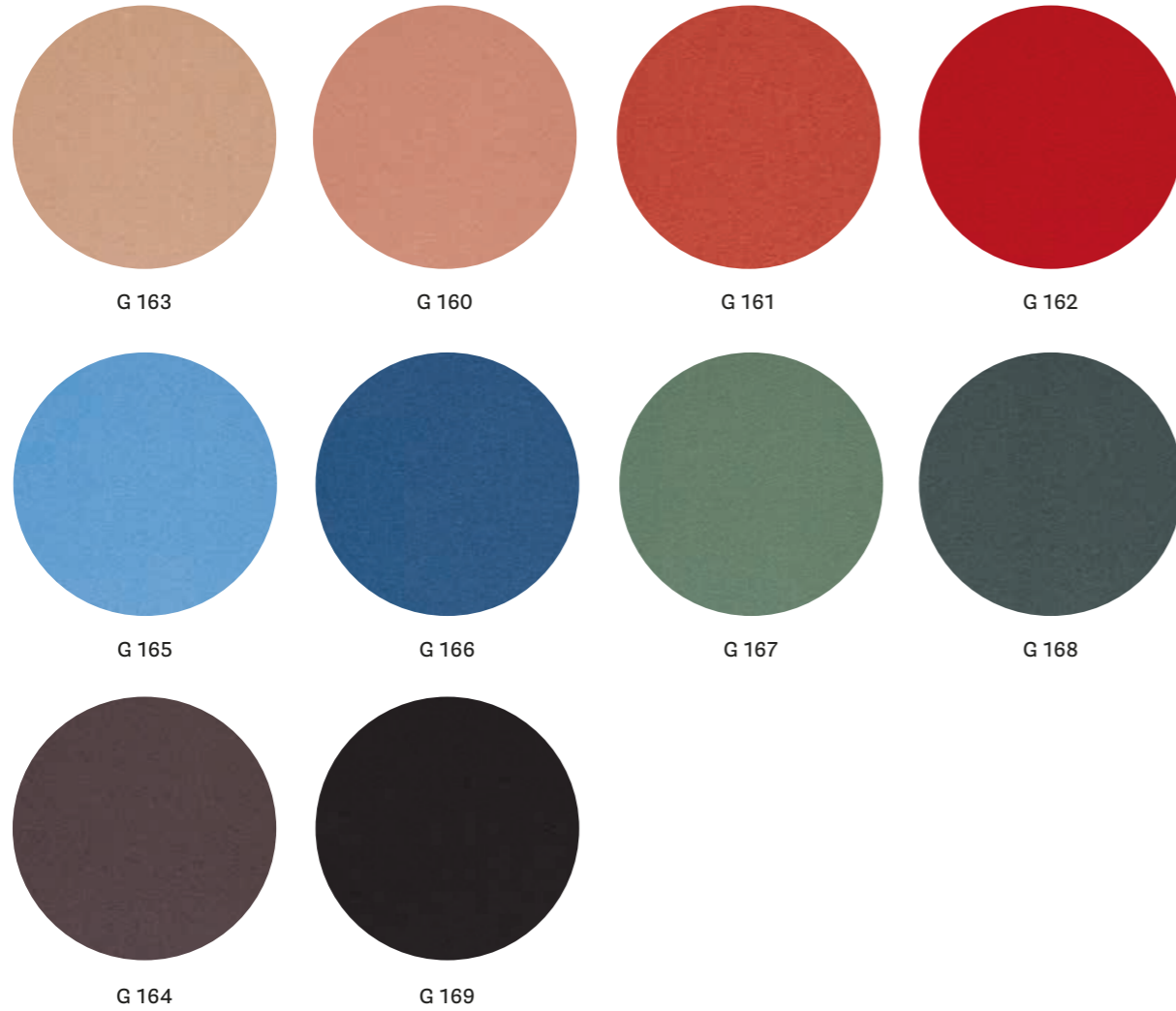
IMO: 2014/90/EU (MED)

UNI 9175 Classe 1 IM

US CA TB 117-2013

• APPROVED / OMOLOGATO





technical specifications / specifiche tecniche

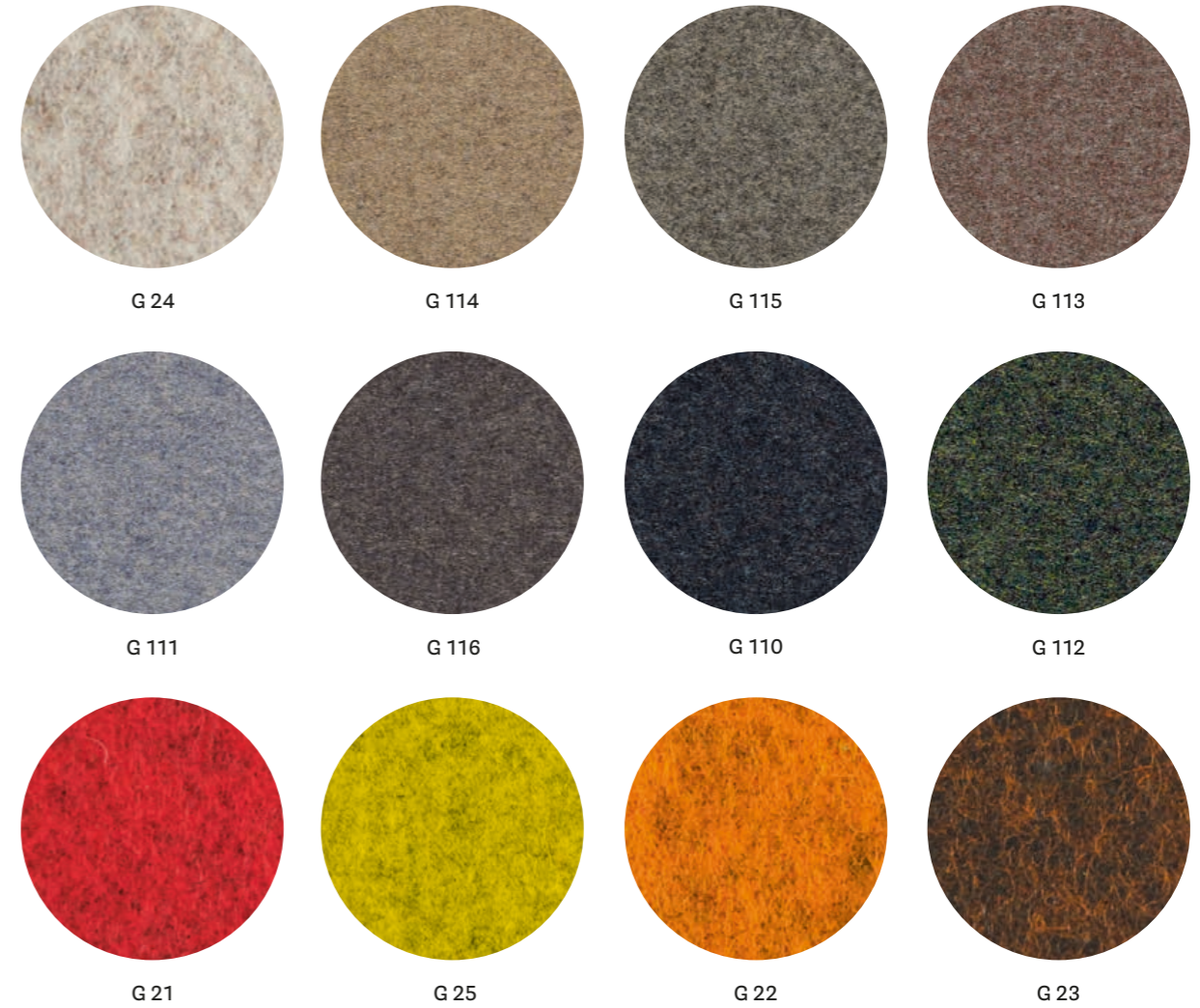


- COLLECTION / COLLEZIONE
kvadrat - HERO
DESIGNER Patricia Urquiola
- COMPOSITION / COMPOSIZIONE
96% New wool
4% Nylon
- ABRASION / ABRASIONE
45.000 cycles, Martindale
(EN ISO 12947)
- PILLING
3-4, scale 1-5 (EN ISO 12945)

- LIGHT FASTNESS / SOLIDITÀ ALLA LUCE
5-6, scale 1-8 (ISO 105-B02)
- SOUND ABSORPTION / ASSORBIMENTO ACUSTICO
folded: $\alpha_w = 0.75$ Class C (ISO 11654)
- FLAME RESISTANCE / RESISTENZA AL FUOCO
AS/NZS 3837 Class 2
BS 5852 Crib 5 with treatment
BS 5852 Part 1
DIN 4102 B2
EN 1021 - 1/2
IMO FTP Code 2010: Part 8

NF D60-013
NFPA 260
SN 198 898 5.3 with treatment
UNI 9175 Classe 1 IM
US CA TB 117-2013

- APPROVED / OMOLOGATO



technical specifications / specifiche tecniche



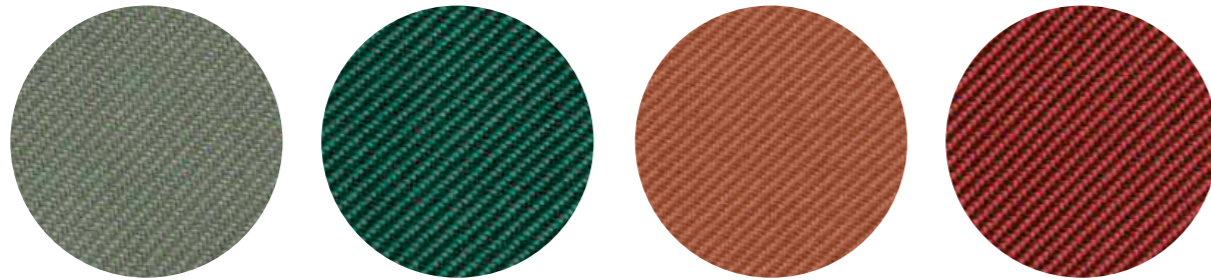
- COLLECTION / COLLEZIONE
kvadrat
G21, G22, G25: DIVINA MELANGE 2
G23, G24: DIVINA MELANGE 3
G110+G116: DIVINA MD
DESIGNER Finn Skødt
- COMPOSITION / COMPOSIZIONE
100% New Wool
- ABRASION / ABRASIONE
45.000 cycles, Martindale
(EN ISO 12947)
- PILLING
3, scale 1-5 (EN ISO 12945)

- LIGHT FASTNESS / SOLIDITÀ ALLA LUCE
5-7, scale 1-8 (ISO 105-B02)
- SOUND ABSORPTION / ASSORBIMENTO ACUSTICO
folded: $\alpha_w = 0.70$ Class C (ISO 11654)
- FLAME RESISTANCE / RESISTENZA AL FUOCO
AS/NZS 1530.3
BS 5852 Crib 5
BS 5852 Part 1
BS 5867 part 2 type B (only for G23, G24)
DIN 4102 B2
EN 1021-1/2
EN 13501, C-s1, d0, glued
IMO FTP Code 2010: Part 8

NF D60-013
NFPA 260
ÖNORM B1/ Q1
SN 198 898 5.3 with treatment
UNI 9175 Classe 1 IM
US CA TB 117-2013

- APPROVED / OMOLOGATO



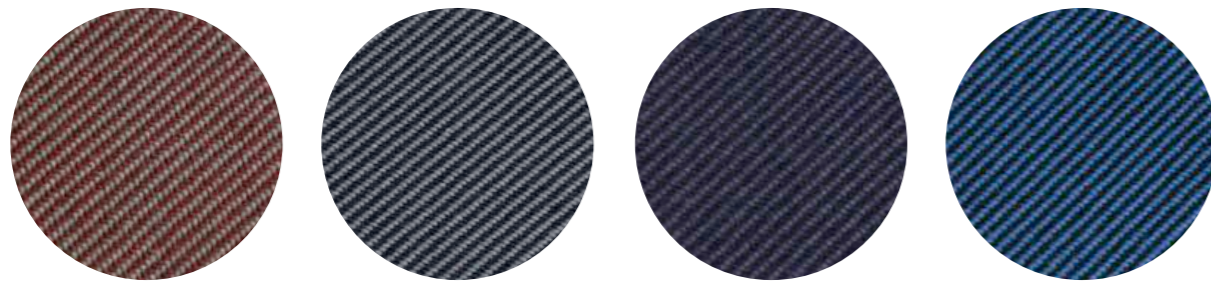


H 110

H 111

H 112

H 113



H 114

H 115

H 116

H 117

technical specifications / specifiche tecniche



- COLLECTION / COLLEZIONE
kvadrat - RELATE
DESIGNER Patricia Urquiola
- COMPOSITION / COMPOSIZIONE
100% TREVIRA CS®
- ABRASION / ABRASIONE
80.000 cycles, Martindale
(EN ISO 12947)

- RUBBING FASTNESS / SOLIDITÀ ALLO SFREGAMENTO
Dry and Wet 4-5, scale 1-5
(EN ISO 105-X12)
- PILLING
4-5, scale 1-5 (EN ISO 12945)
- LIGHT FASTNESS / SOLIDITÀ ALLA LUCE
5-7, scale 1-8 (EN ISO 105-B02)
- SOUND ABSORPTION / ASSORBIMENTO ACUSTICO
folded: $\alpha_w = 0.50$ Class D (EN ISO 354)

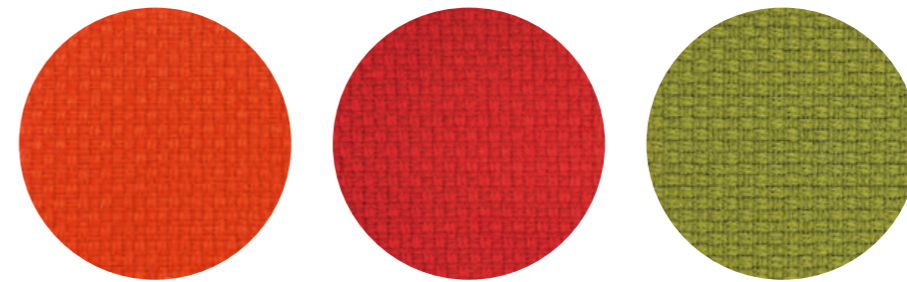
- FLAME RESISTANCE / RESISTENZA AL FUOCO
AS/NZS 3837, class 2
BS 5852 Crib 5
BS 5852 Part 1 with treatment
DIN 4102 B1
EN 1021-1/2
IMO FTP Code 2010: Part 8
NF D60-013
NF P92 507 M1
NFPA 701
ÖNORM B1/Q1
SN 198 898 5.2
UNI 9177 Classe 1
US CA TB 117-2013

- APPROVED / OMOLOGATO



H 62

H 63



H 60

H 61

H 64

technical specifications / specifiche tecniche



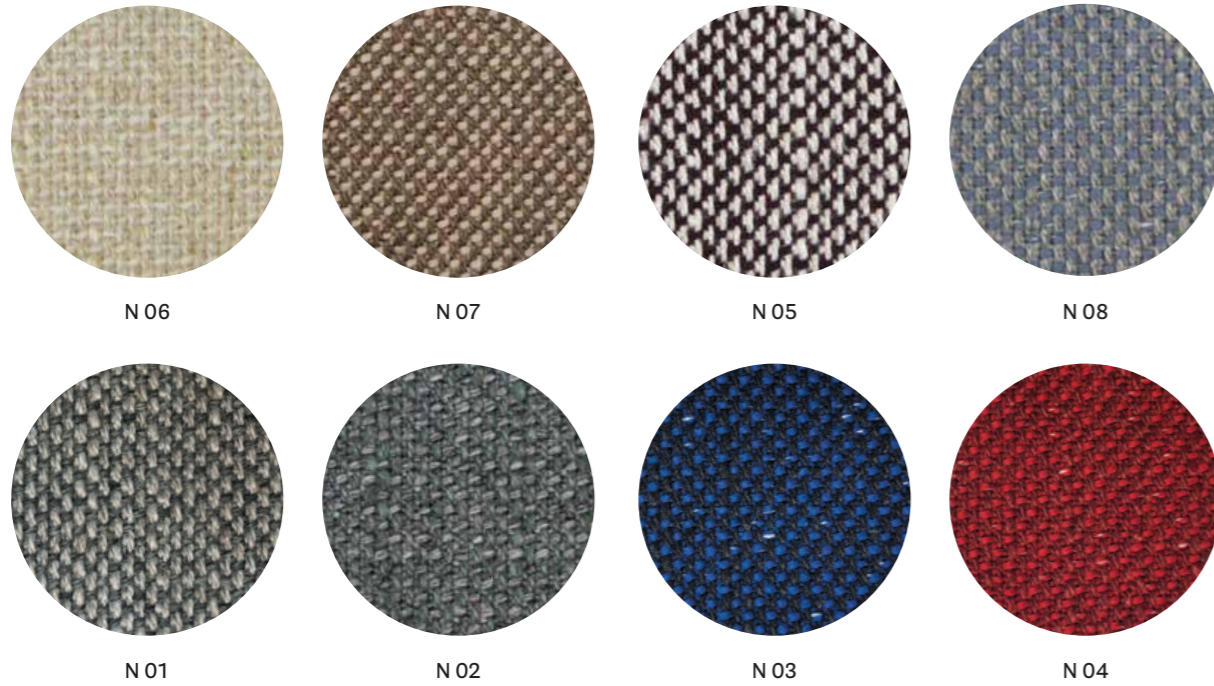
- COMPOSITION / COMPOSIZIONE
92% New Zealand Wool
8% Polyamide
- ABRASION / ABRASIONE
200.000 cycles, Martindale
(EN ISO 12947-2)

- RUBBING FASTNESS / SOLIDITÀ ALLO SFREGAMENTO
Dry and Wet 4-5, scale 1-5
(EN ISO 105-X12)
- PILLING
4, scale 1-5 (EN ISO 12945-2)
- LIGHT FASTNESS / SOLIDITÀ ALLA LUCE
5-7, scale 1-8 (EN ISO 105-B02)

- FLAME RESISTANCE / RESISTENZA AL FUOCO
BS EN 1021 1&2
BS EN 1021-1
BS 5852 Part 1 0, 1
UNI 9175 Classe 1 IM
US CA TB 117-2013

- APPROVED / OMOLOGATO





Fabrics Tessuti

Outdoor

technical specifications / specifiche tecniche



• COLLECTION / COLLEZIONE

kvadrat

SUNNIVA 3: N01, N02, N05 ÷ N08

SUNNIVA 2: N03, N04

DESIGNERS Raf Simons & Fanny Aronsen

• COMPOSITION / COMPOSIZIONE

58% New wool

25% Viscose

8% Linen

5% Nylon

4% Polyester

• ABRASION / ABRASIONE

50.000 cycles, Martindale
(EN ISO 12947)

• RUBBING FASTNESS / SOLIDITÀ ALLO SFREGAMENTO

only for SUNNIVA 3:

Dry 4-5 and Wet 3-5, scale 1-5
(ISO 105-X12)

• PILLING

3, scale 1-5 (EN ISO 12945)

• LIGHT FASTNESS / SOLIDITÀ ALLA LUCE

for SUNNIVA 3: 4-7, scale 1-8

for SUNNIVA 2: 5-7, scale 1-8
(ISO 105-B02)

• FLAME RESISTANCE / RESISTENZA AL FUOCO

AS/NZS 3837, class 2

BS 5852 Part 1 with treatment

BS 5852 Crib 5 with treatment

EN 1021 – 1/2

NFPA 260

US CA TB 117-2013

for SUNNIVA 3:

IMO FTP Code 2010: Part 8 with

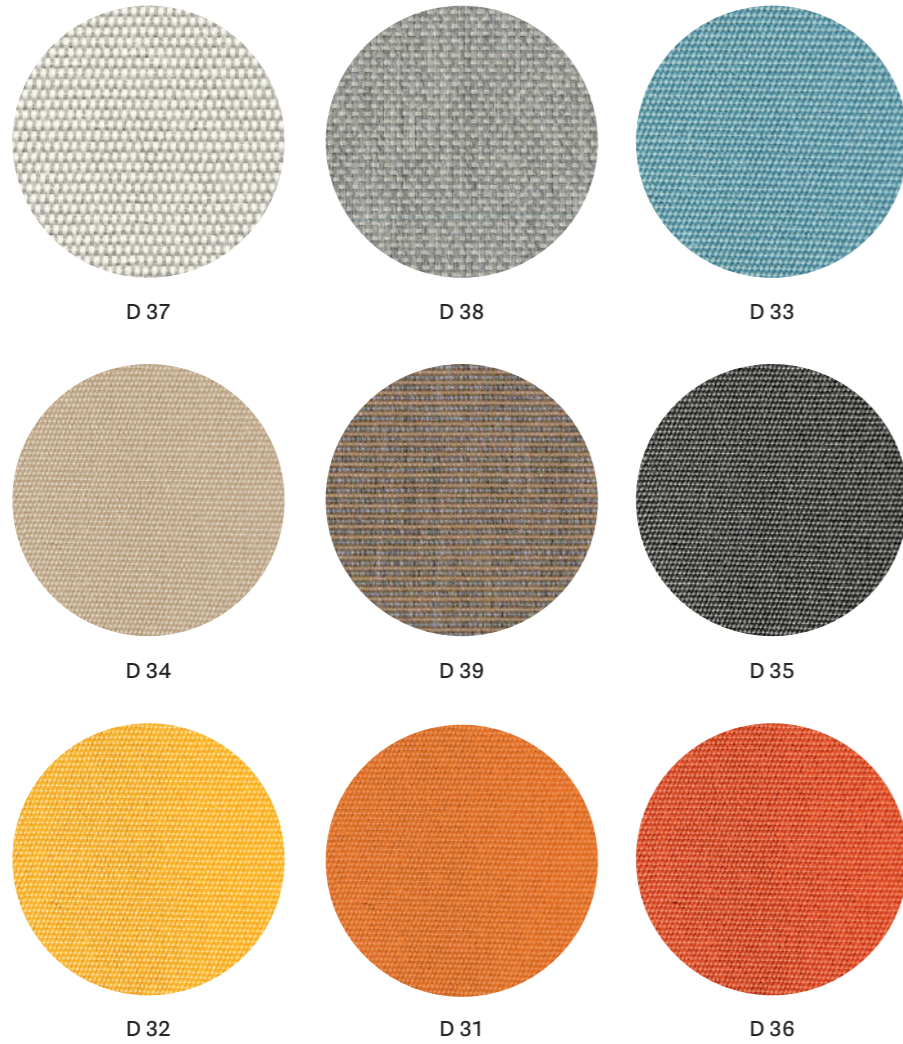
treatment

for SUNNIVA 2:

DIN 4102 B2

• APPROVED / OMOLOGATO



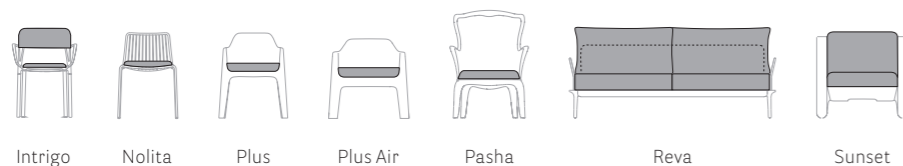


technical specifications / specifiche tecniche

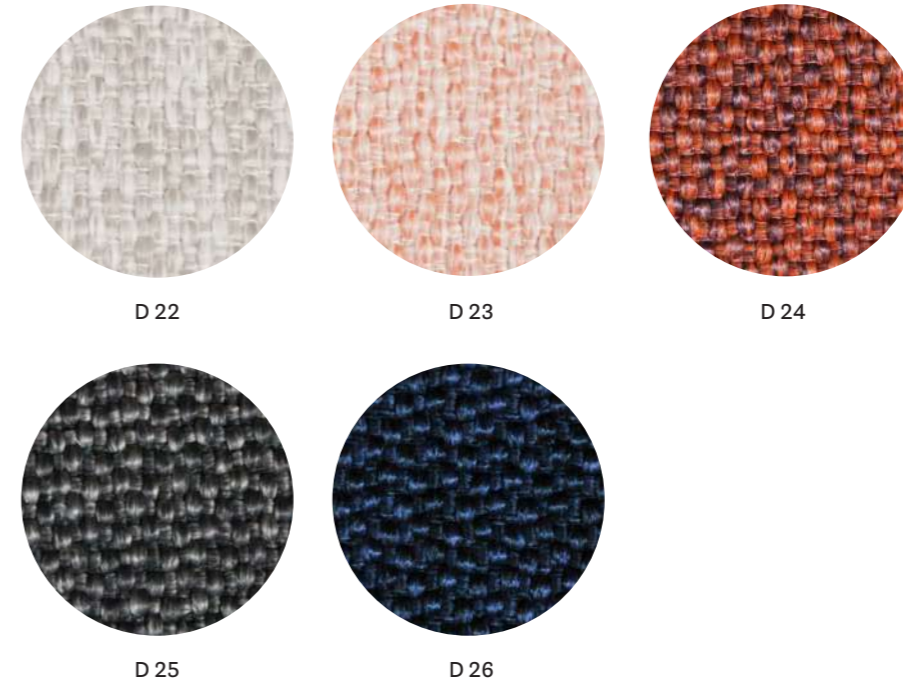


- COMPOSITION / COMPOSIZIONE
100% Acrylic teflon
- ABRASION / ABRASIONE
10.000 cycles, Martindale (EN ISO 12947)
- LIGHT FASTNESS / SOLIDITÀ ALLA LUCE
7-8, scale 1-8 (EN ISO 105-B02)

for cushions only for collections / solo per cuscino delle collezioni



Only for Nolita cushions: rim available in colours D34, D35 and D36 / Solo per cuscino Nolita: disponibile con bordino in diversi colori D34, D35 e D36

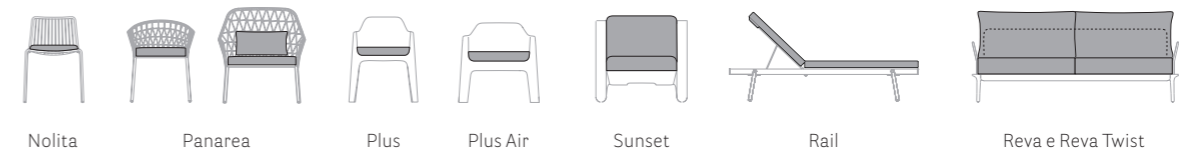


technical specifications / specifiche tecniche



- COMPOSITION / COMPOSIZIONE
100% Polypropylene
- ABRASION / ABRASIONE
> 30.000 cycles, Martindale (EN ISO 12947-2)
- RUBBING FASTNESS / SOLIDITÀ ALLO SFREGAMENTO
Dry and Wet 4-5, scale 1-5 (EN ISO 105-X12)
- PILLING
5, scale 1-5 (EN ISO 12945-2)
- LIGHT FASTNESS / SOLIDITÀ ALLA LUCE
7, scale 1-8 (EN ISO 105-B02)
- WATER FASTNESS / SOLIDITÀ ALL'ACQUA
5, scale 1-5 (EN ISO 105-E01)
- FLAME RESISTANCE / RESISTENZA AL FUOCO
US CA TB 117-2013

for cushions only for collections / solo per cuscino delle collezioni



Simil Leather

Finta Pelle

CATEGORY A / CATEGORIA A

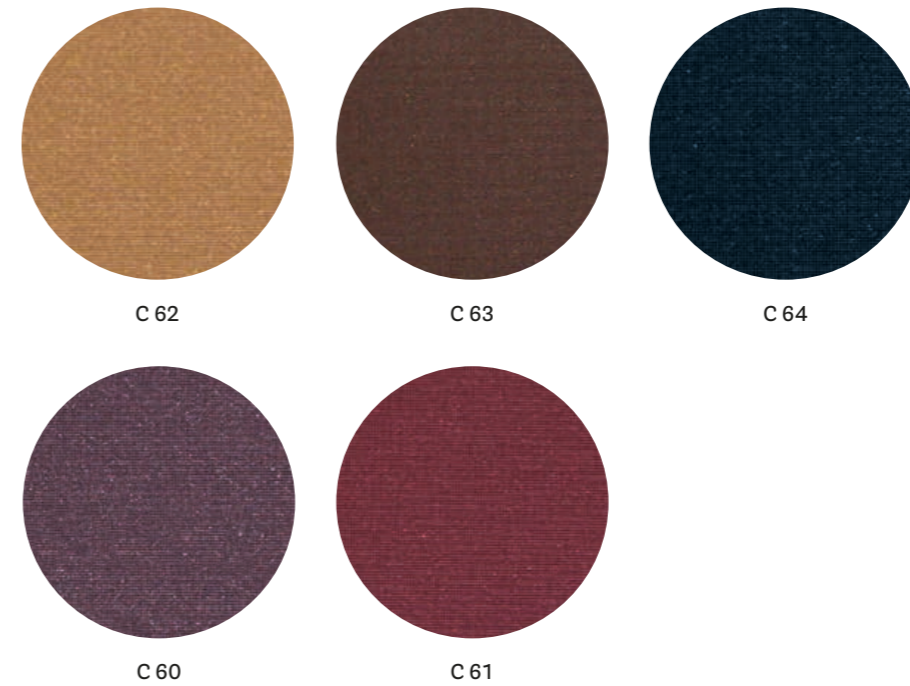


technical specifications / specifiche tecniche



- **COMPOSITION / COMPOSIZIONE**
85% PVC
15% Polyurethane
- **ABRASION / ABRASIONE**
50.000 cycles, Martindale
(UNI EN ISO 12947-2)
- **RUBBING FASTNESS / SOLIDITÀ ALLO SFREGAMENTO**
Dry and Wet 4-5, scale 1-5
(UNI EN ISO 105-X12)
- **LIGHT FASTNESS / SOLIDITÀ ALLA LUCE**
6, scale 1-8
(UNI EN ISO 105-B02)

CATEGORY C / CATEGORIA C

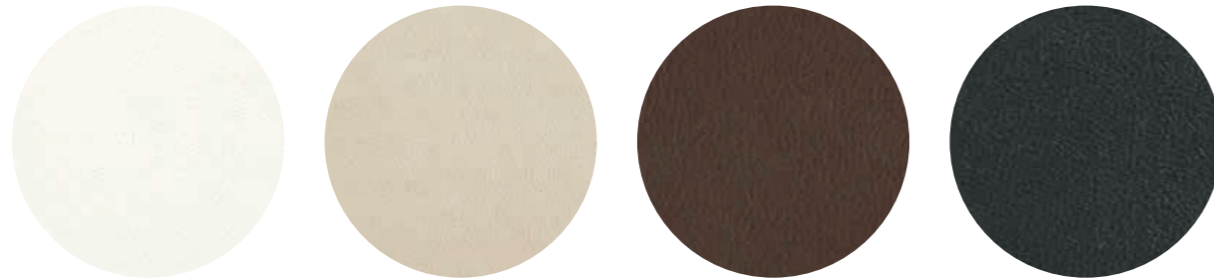


technical specifications / specifiche tecniche



- **COMPOSITION / COMPOSIZIONE**
72% PVC
25% Cotton
3% Polyurethane
- **ABRASION / ABRASIONE**
50.000 cycles, Martindale
(EN ISO 5470-2)
- **RUBBING FASTNESS / SOLIDITÀ ALLO SFREGAMENTO**
Dry and Wet 4-5, scale 1-5
(UNI EN ISO 105-X12)
- **LIGHT FASTNESS / SOLIDITÀ ALLA LUCE**
6, scale 1-8 (UNI EN ISO 105-B02)
- **FLAME RESISTANCE / RESISTENZA AL FUOCO**
BS 5852-1 Part 1
EN 1021-2
IMO RESOLUTION A.652 (16): 1989
UNI 9175 Classe 1 IM
US CA TB 117-2013

CATEGORY C / CATEGORIA C

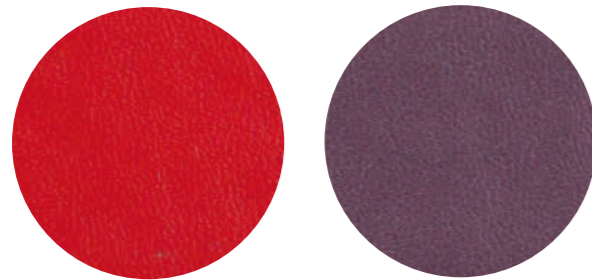


C 90

C 94

C 95

C 93



C 92

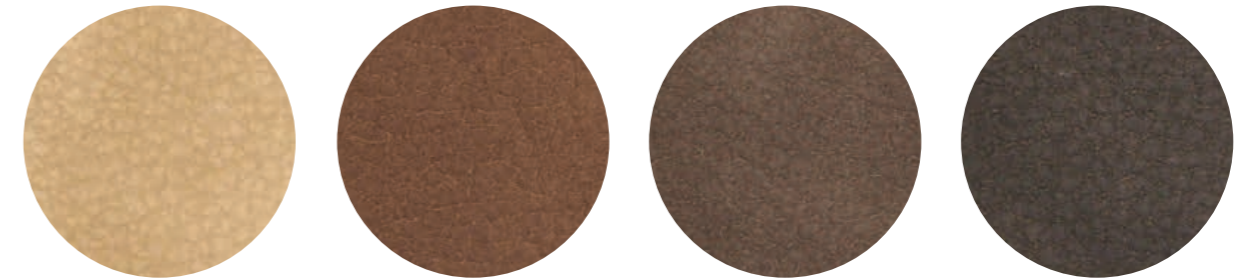
C 91

technical specifications / specifiche tecniche



- **COMPOSITION / COMPOSIZIONE**
72% PVC
25% Cotton
3% Polyurethane
- **ABRASION / ABRASIONE**
50.000 cycles, Martindale (EN ISO 5470-2)
- **RUBBING FASTNESS / SOLIDITÀ ALLO SFREGAMENTO**
Dry and Wet 4-5, scale 1-5 (UNI EN ISO 105-X12)
- **LIGHT FASTNESS / SOLIDITÀ ALLA LUCE**
6, scale 1-8 (UNI EN ISO 105-B02)
- **FLAME RESISTANCE / RESISTENZA AL FUOCO**
BS 5852-1 Part 1
EN 1021-2
IMO RESOLUTION A.652 (16): 1989
UNI 9175 Classe 1 IM
US CA TB 117-2013

CATEGORY C / CATEGORIA C



C 45

C 46

C 47

C 48

technical specifications / specifiche tecniche



- **COMPOSITION / COMPOSIZIONE**
80% PVC
18% PES
2% Polyurethane
- **ABRASION / ABRASIONE**
50.000 cycles, Martindale (EN ISO 5470-2)
- **RUBBING FASTNESS / SOLIDITÀ ALLO SFREGAMENTO**
Dry and Wet 4-5, scale 1-5 (UNI EN ISO 105-X12)
- **FLAME RESISTANCE / RESISTENZA AL FUOCO**
BS 5852 Part 1 0,1
EN 1021-1&2
UNI 9175 Classe 1 IM



C 139

C 140

C 141

C 134

C 130

C 131

C 132

C 133

C 135

C 136

C 137

C 138

technical specifications / specifiche tecniche



- COMPOSITION / COMPOSIZIONE
76% PVC
22% PES
2% Polyurethane
- ABRASION / ABRASIONE
60.000 cycles, Martindale
(ISO 5470-2)

- RUBBING FASTNESS / SOLIDITÀ ALLO SFREGAMENTO
Dry and Wet 4-5, scale 1-5
(ISO 105-X12)
- LIGHT FASTNESS / SOLIDITÀ ALLA LUCE
6, scale 1-8 (ISO 105-B02)

- FLAME RESISTANCE / RESISTENZA AL FUOCO
BS 5852-1 match test
EN 1021 Part 1-2
UNI 9175 Classe 1 IM
US CA TB 117-2013



C 14

C 21

C 15

C 17

C 13

C 12

C 20

C 11

C 18

C 22

C 10

technical specifications / specifiche tecniche



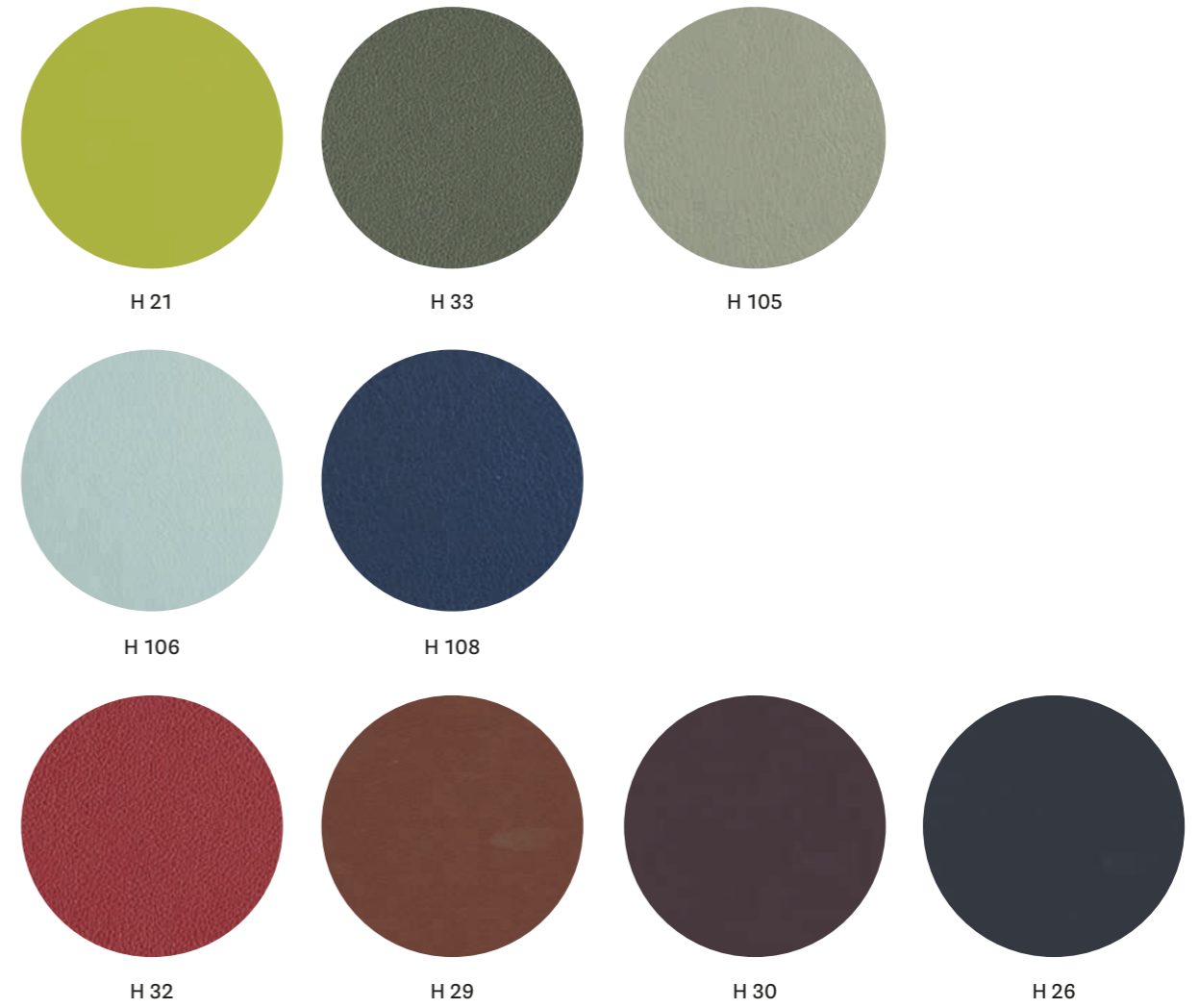
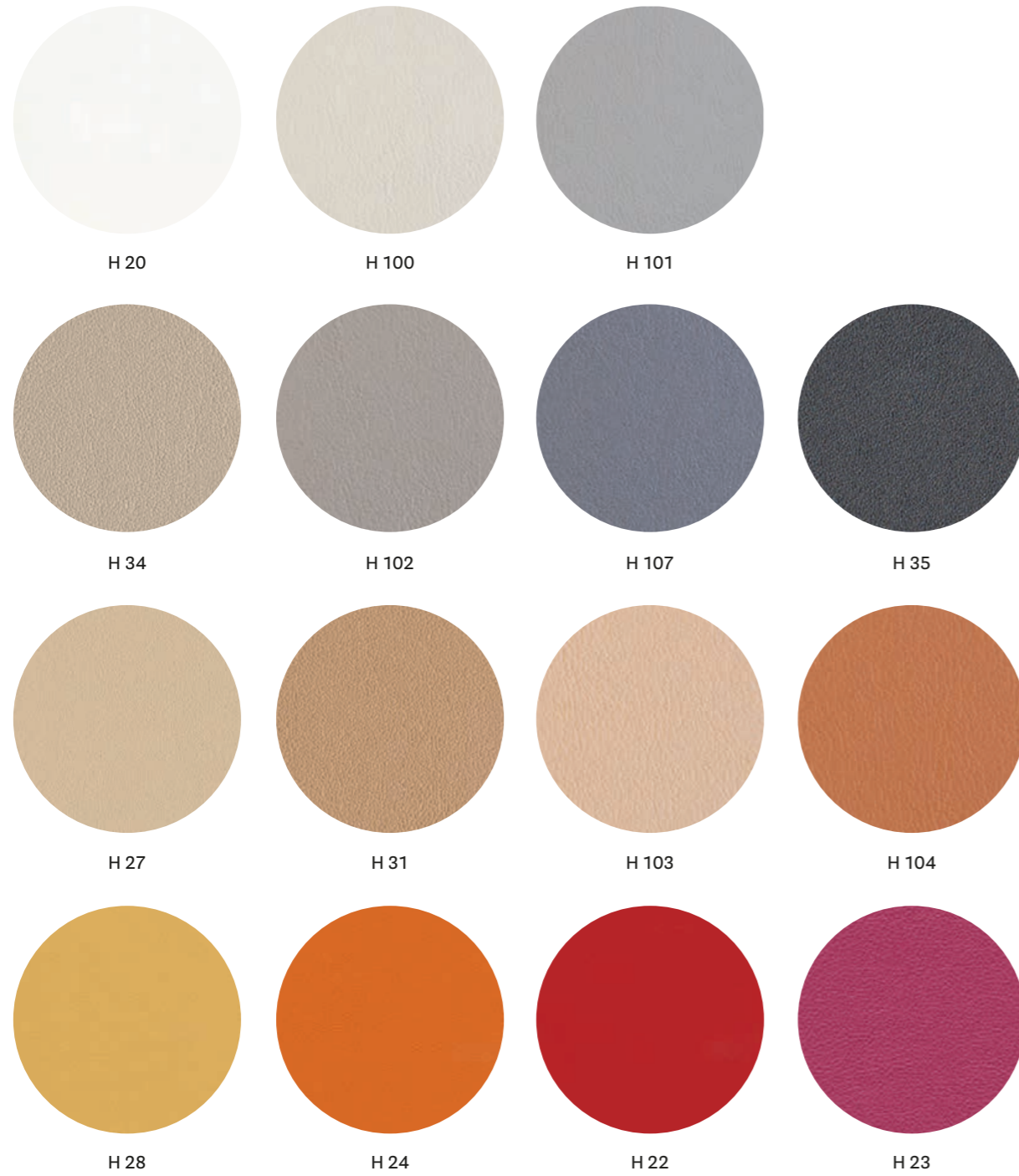
- COMPOSITION / COMPOSIZIONE
85% PVC
15% Cotton
- ABRASION / ABRASIONE
150.000 cycles, Martindale
(ISO 5470-2)

- LIGHT FASTNESS / SOLIDITÀ ALLA LUCE
≥6, scale 1-8 (EN ISO 105-B02)
- FLAME RESISTANCE / RESISTENZA AL FUOCO
B2 (DIN 4102)
BS 5852 Crib 5
EN 1021.1-2
EN 13501-1 - Cs3do
FAR 25853 App F Part 1

- IMO RESOLUTION A.652
NF D60-013 - AM 18
NFP 92503 M1
NY/NJ - Port Authority
UFAC Fabric Class 1
German fire standard B1 (except C12 and C22)
US CATB 117
US CATB 133

- APPROVED / OMOLOGATO





technical specifications / specifiche tecniche



- COMPOSITION / COMPOSIZIONE
63% Polyurethane
29% Cotton
8% PES
- ABRASION / ABRASIONE
150.000 cycles, Martindale
(UNI EN ISO 12947-2)

- LIGHT FASTNESS / SOLIDITÀ ALLA LUCE
5-6, scale 1-8 (UNI EN ISO 105-B02)
- FLAME RESISTANCE / RESISTENZA AL FUOCO
BS 5852 Crib 5
BS 5852 Part 1-2
EN 1021 Part 1-2
IMO resolution FTP Code 2010

IMO resolution A.652 (16):1989
UNI 9175 Classe 1 IM
US CA TB 117-2013

Leather Pelle

CATEGORY P / CATEGORIA P



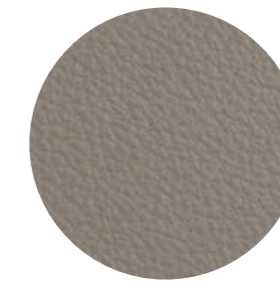
PBI



PGC



PSA



PGA



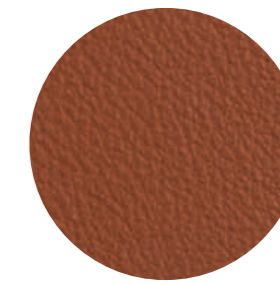
PBE



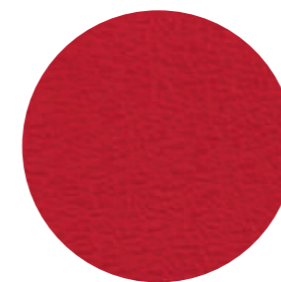
PGN



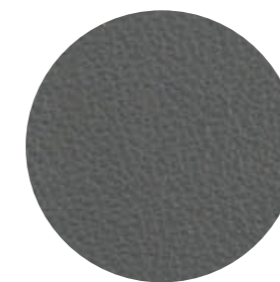
PTA



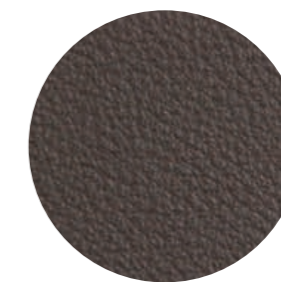
PTE



PRO



PGR



PMA



PNE

technical specifications / specifiche tecniche

• COLLECTION / COLLEZIONE



• COMPOSITION / COMPOSIZIONE

Mid grain leather
Pelle mezzo fiore

• RUBBING FASTNESS / SOLIDITÀ ALLO SFREGAMENTO Dry (500 Cycles) and Wet (250 Cycles) ≥ 4 (UNI EN ISO 11640:1998)

- LIGHT FASTNESS / SOLIDITÀ ALLA LUCE ≥ 5 (UNI EN ISO 105 B02) (MET.5)
- FLAME RESISTANCE / RESISTENZA AL FUOCO
BS 5852:1979
BS EN 1021-1-2:2006
IMO RES A652 (16)

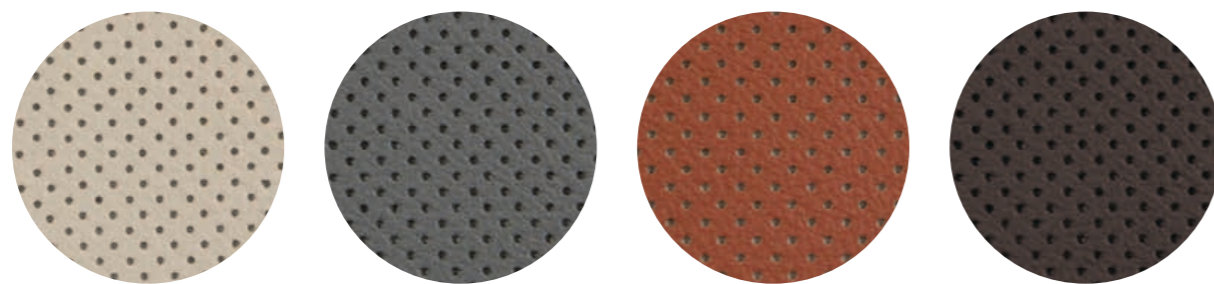
cleaning / lavaggio

Clean with a damp cloth using water. Do not use detergents, solvents, bleached, abrasives. Pulire con un panno umido d'acqua. Non usare detersivi, solventi, candeggianti, abrasivi.

• APPROVED / OMOLOGATO



CATEGORY P / CATEGORIA P



PGCF

PGRF

PTEF

PMAF

technical specifications / specifiche tecniche

• COLLECTION / COLLEZIONE



• COMPOSITION / COMPOSIZIONE

Perforated mid grain leather
Pelle mezzo fiore traforata

- RUBBING FASTNESS / SOLIDITÀ ALLO SFREGAMENTO
Dry (500 Cycles) and Wet (250 Cycles) ≥ 4
(UNI EN ISO 11640:1998)

- LIGHT FASTNESS / SOLIDITÀ ALLA LUCE
 ≥ 5 (UNI EN ISO 105 B02) (MET.5)
- FLAME RESISTANCE / RESISTENZA AL FUOCO
BS 5852:1979
BS EN 1021-1-2:2006
IMO RES A652 (16)

cleaning / lavaggio

Clean with a damp cloth using water. Do not use detergents, solvents, bleached, abrasives.
Pulire con un panno umido d'acqua. Non usare detersivi, solventi, candeggianti, abrasivi.

• APPROVED / OMOLOGATO



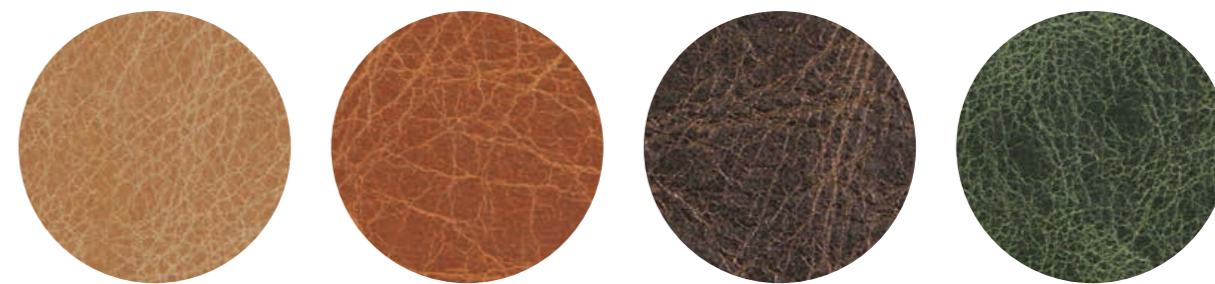
only for collections / solo per collezioni



Inner part of the back, upper part of the seat.
Lato interno dello schienale e parte superiore del sedile.

Vic / Vic Metal

CATEGORY P / CATEGORIA P



PBS

PCO

PMS

PVE

technical specifications / specifiche tecniche

• COLLECTION / COLLEZIONE



• COMPOSITION / COMPOSIZIONE

Vintage mid grain leather
Pelle mezzo fiore anticata

- RUBBING FASTNESS / SOLIDITÀ ALLO SFREGAMENTO
Dry (50 Cycles) and Wet (20 Cycles) ≥ 3
(EN ISO 11640:1998)
- LIGHT FASTNESS / SOLIDITÀ ALLA LUCE
 $\geq 2/3$ (UNI EN ISO 105-B02) (MET.5)
- FLAME RESISTANCE / RESISTENZA AL FUOCO
BS 5852:1979
BS EN 1021-1-2:2006

cleaning / lavaggio

Clean with warm and damp cloth. Do not use detergents, solvents, bleached, abrasives.
Pulire con acqua calda e un panno umido. Non usare detersivi, solventi, candeggianti, abrasivi.

only for collections / solo per collezioni

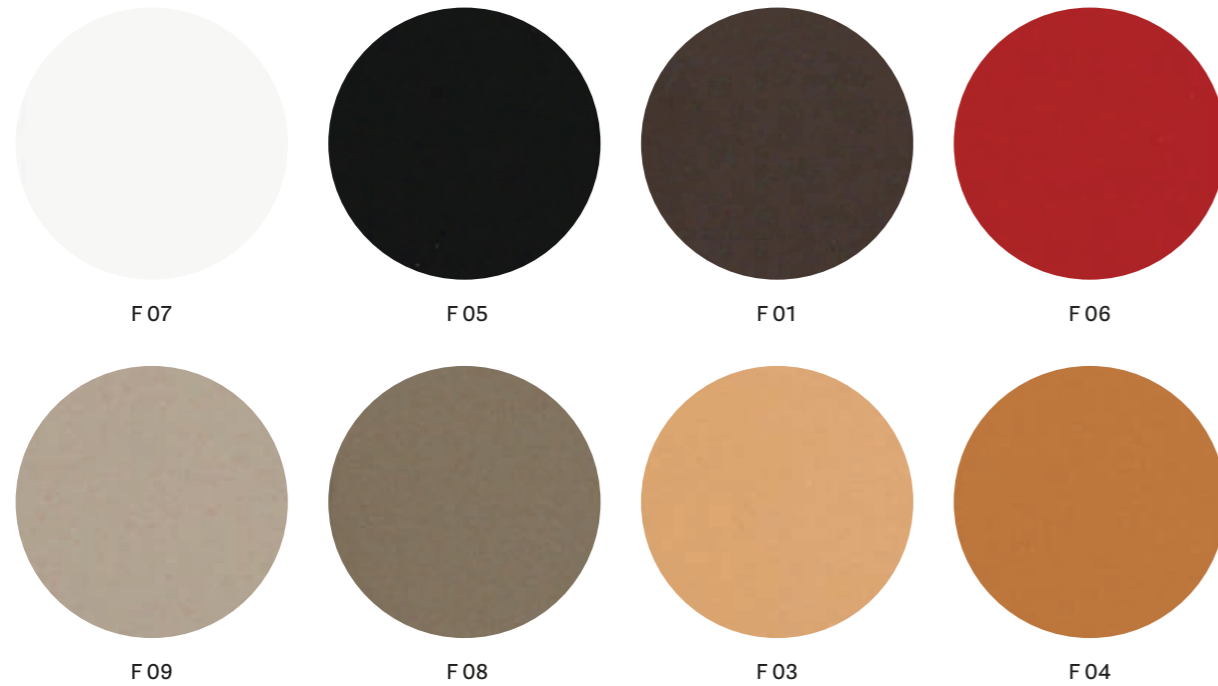


Malmö

Inga

Hard leather
Cuoio

CATEGORY F / CATEGORIA F



technical specifications / specifiche tecniche

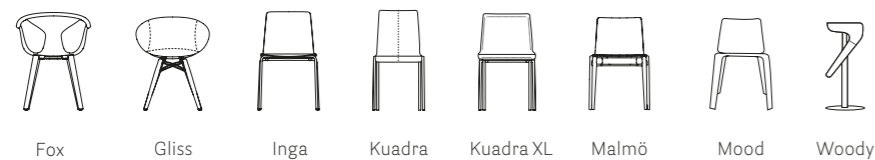
• **COMPOSITION / COMPOSIZIONE**
Genuine hard leather, tanned with vegetable substances.
 Cuoio naturale, conciato con sostanze vegetali.

• **RUBBING FASTNESS / SOLIDITÀ ALLO SFREGAMENTO**
Satisfactory up to maximum 700 abrasions in humid environment and 1000 abrasions in dry environment.
 Soddisfacente sino a max 700 abrasioni all'umido e 1000 abrasioni al secco.

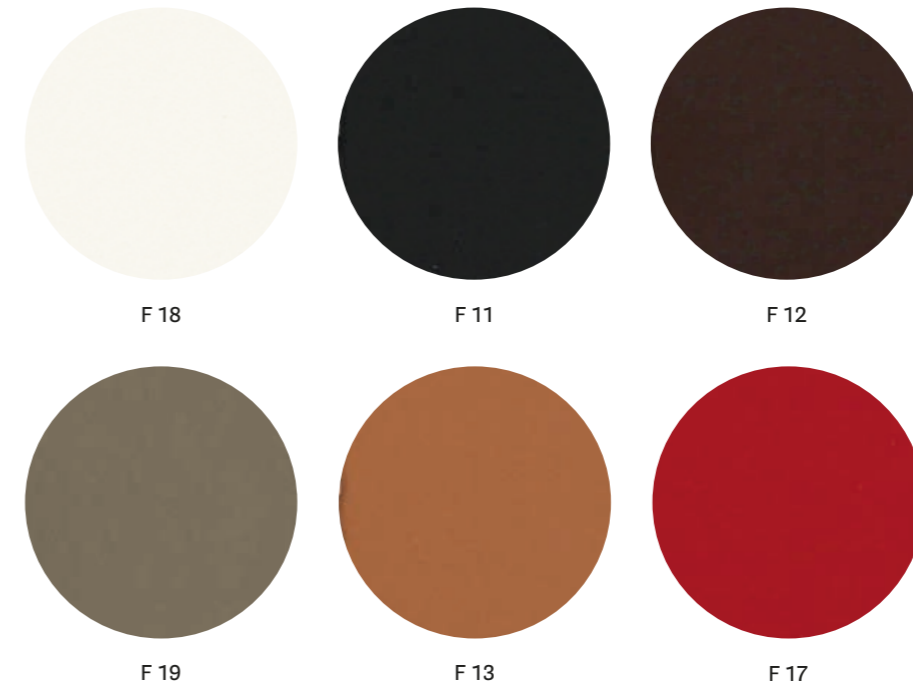
cleaning / lavaggio

Clean with a damp cloth using water.
 Pulire con un panno umido d'acqua.

only for collections / solo per collezioni



CATEGORY F / CATEGORIA F



technical specifications / specifiche tecniche

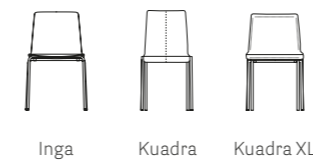
• **COMPOSITION / COMPOSIZIONE**
Regenerated hard leather. Tanned leather cuttings and shavings linked with natural rubber latex.
 Cuoio rigenerato. Ritagli e rasatura di cuoio conciato legati con lattice di gomma naturale.

• **RUBBING FASTNESS / SOLIDITÀ ALLO SFREGAMENTO**
Dry and wet >1000 (UNI EN ISO 11640)
 • **LIGHT FASTNESS / SOLIDITÀ ALLA LUCE**
4-5 Xenotest Method
 • **FLAME RESISTANCE / RESISTENZA AL FUOCO**
BS EN 1021 1&2
BS 5852 Part 1
US CA TB 117 E Part 1

cleaning / lavaggio

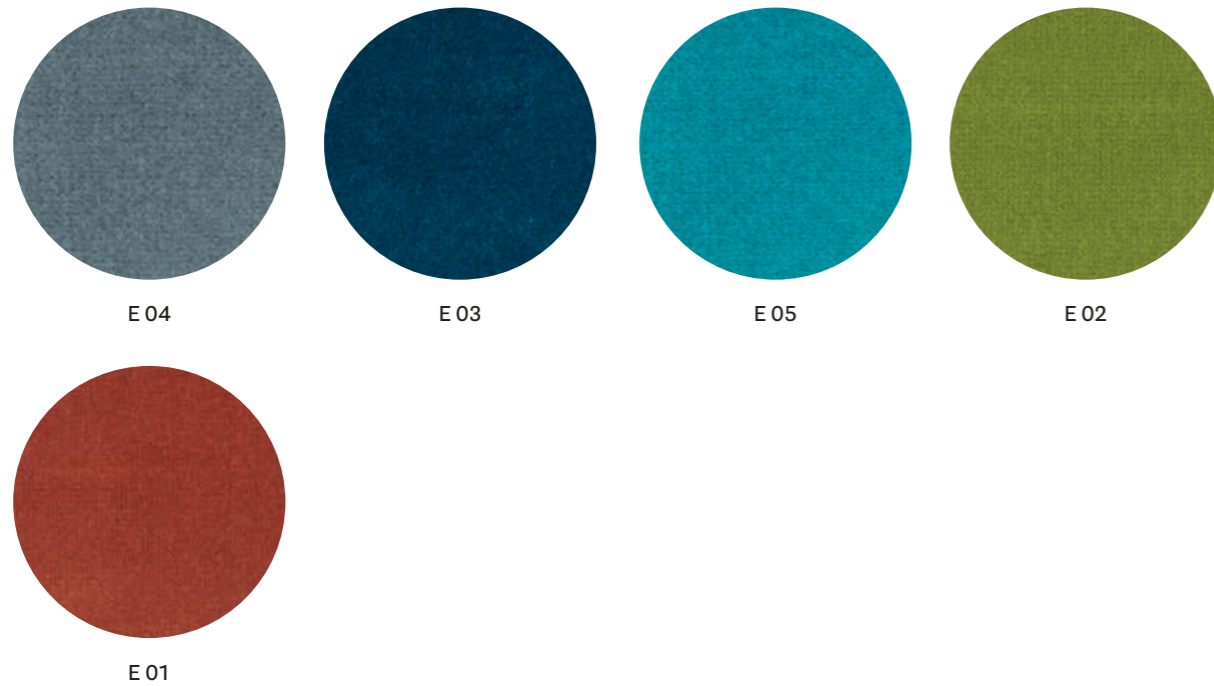
Clean with a damp cloth using water.
 Pulire con un panno umido d'acqua.

only for collections / solo per collezioni



Velvet
Velluto

CATEGORY E / CATEGORIA E

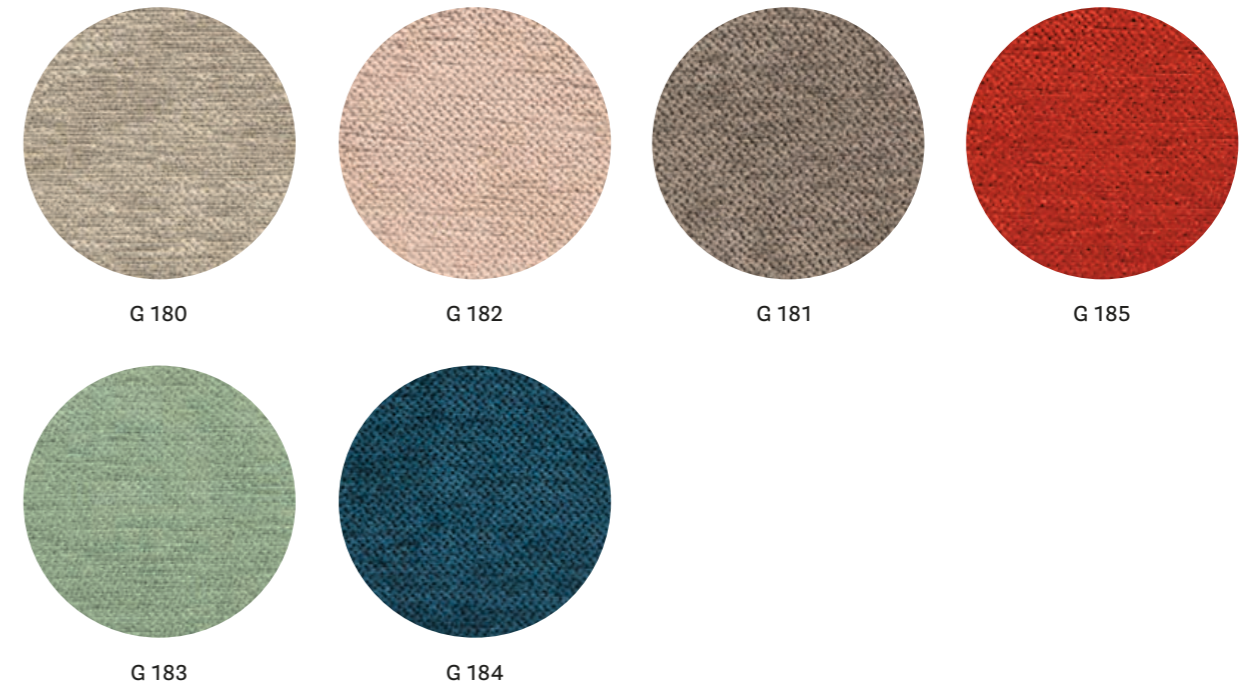


technical specifications / specifiche tecniche



- COLLECTION / COLLEZIONE
DEDAR
ADAMO & EVA
- COMPOSITION / COMPOSIZIONE
100% Cotton
- ABRASION / ABRASIONE
50.000 cycles, Martindale (ISO 12947-2)
- RUBBING FASTNESS / SOLIDITÀ ALLO SFREGAMENTO
Dry 4-5 and Wet 3-5, scale 1-5 (ISO 105-X12)
- LIGHT FASTNESS / SOLIDITÀ ALLA LUCE
4-6, scale 1-8 (ISO 105-B02)

CATEGORY G / CATEGORIA G



technical specifications / specifiche tecniche

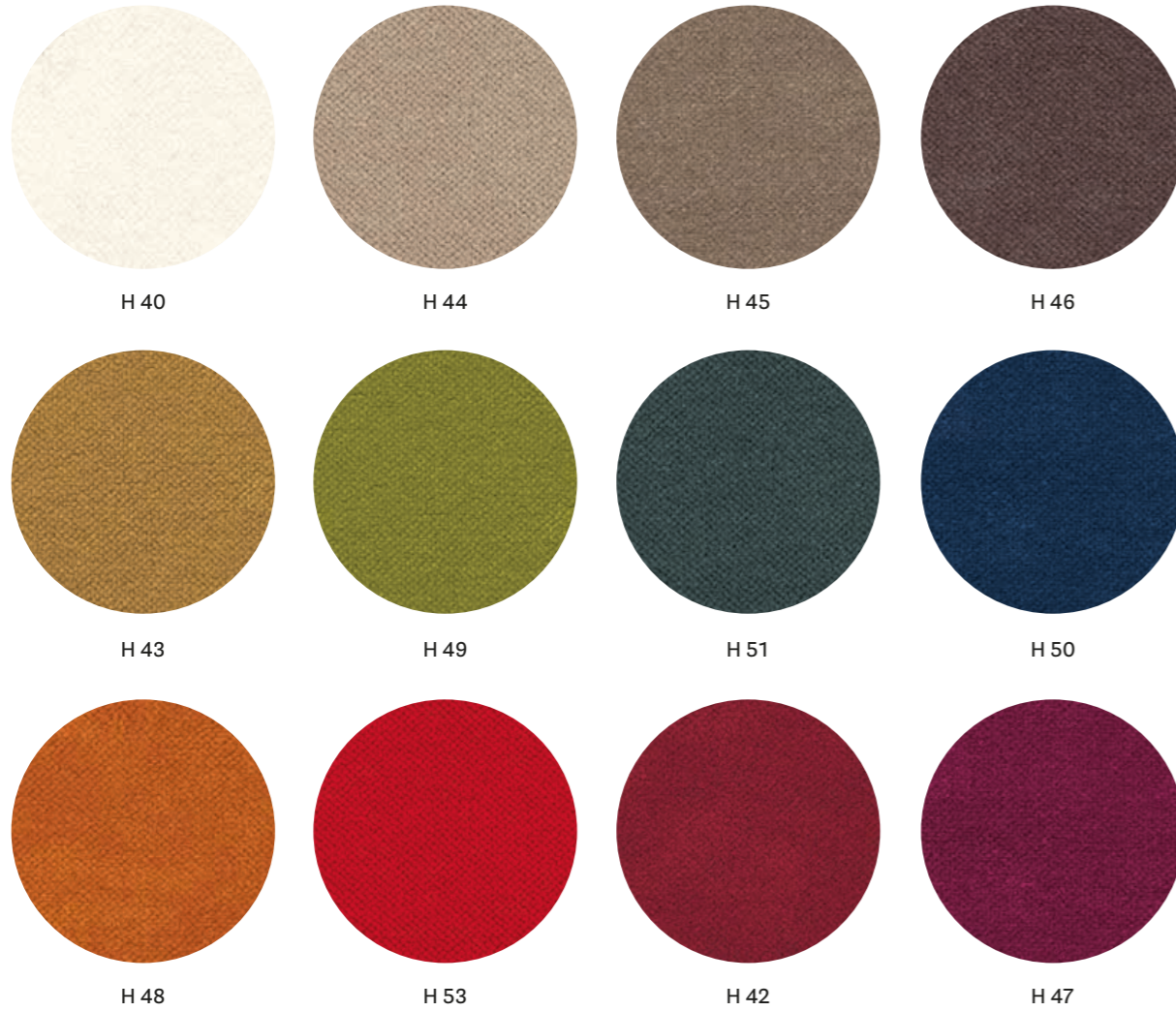


- COLLECTION / COLLEZIONE
kvadrat - STILL
DESIGNER Georgina Wright
- COMPOSITION / COMPOSIZIONE
100% TREVIRA CS®
- ABRASION / ABRASIONE
50.000 cycles, Martindale (EN ISO 12947)
- RUBBING FASTNESS / SOLIDITÀ ALLO SFREGAMENTO
Dry and Wet 4-5, scale 1-5 (EN ISO 105-X12)
- PILLING
4-5, scale 1-5 (EN ISO 12945)
- LIGHT FASTNESS / SOLIDITÀ ALLA LUCE
5-7, scale 1-8 (ISO 105-B02:2014)
- SOUND ABSORPTION / ASSORBIMENTO ACUSTICO
folded: $\alpha_w = 0.85$ Class B (ISO 11654)
- FLAME RESISTANCE / RESISTENZA AL FUOCO
BS 5852 Crib 5
BS 5852 Part 1
BS 5867 Part 2 type B
DIN 4102 B1
- EN 1021-1/2
IMO FTP Code 2010:Part 8
NF D60-013
NF P92 57 M1
ÖNORM B1/Q1
SN 198 898 5.2
UNI 9175 Classe 1 IM
US CA TB 117-2013

- APPROVED / OMOLOGATO



CATEGORY H / CATEGORIA H



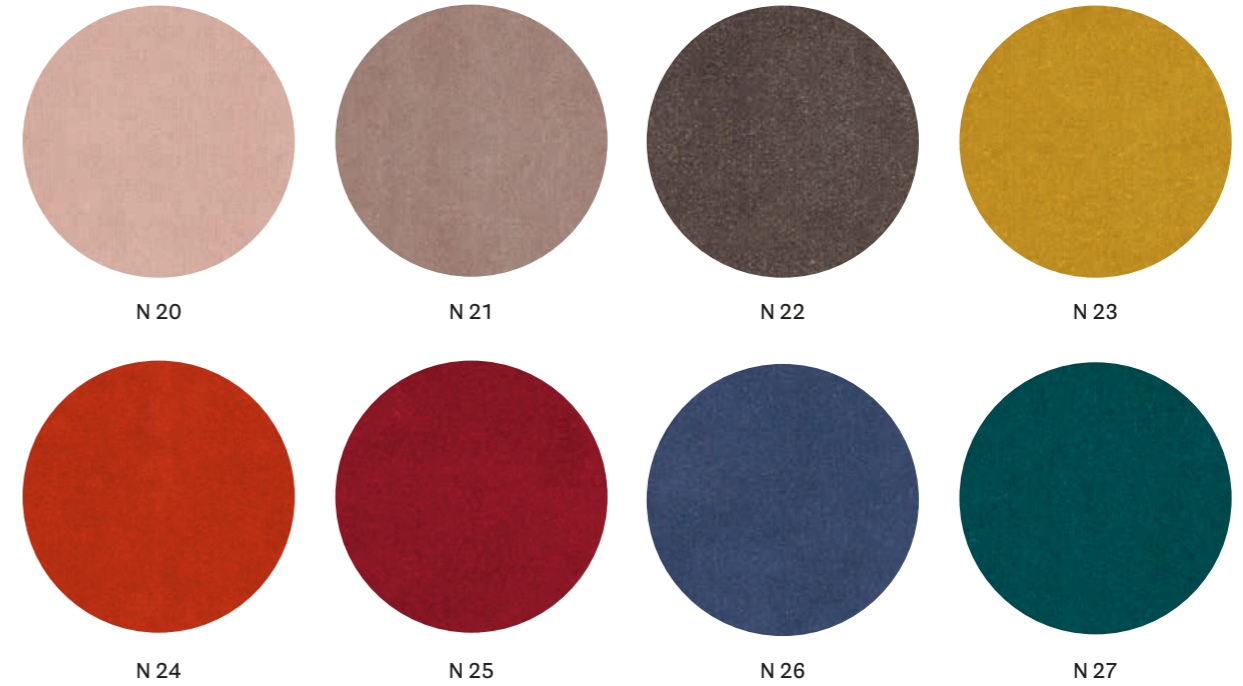
technical specifications / specifiche tecniche



H 41

- COMPOSITION / COMPOSIZIONE
100% TREVIRA CS®
- ABRASION / ABRASIONE
190.000 cycles, Martindale
(EN ISO 12947-2)
- RUBBING FASTNESS / SOLIDITÀ ALLO SFREGAMENTO
Dry and Wet 4-5, scale 1-5
(EN ISO 105-X12)
- PILLING
5, scale 1-5 (EN ISO 12945-2)
- LIGHT FASTNESS / SOLIDITÀ ALLA LUCE
5, scale 1-8 (EN ISO 105-B02)
- SOUND ABSORPTION / ASSORBIMENTO ACUSTICO
folded: $\alpha_w = 0.70$ (EN ISO 354:2003)
- FLAME RESISTANCE / RESISTENZA AL FUOCO
BS 5852 Part 0,1
DIN 4102 B1
EN 1021-1&2
IMO MSC 307(88) Annex 1 Part 7-8
NF P 92-503-507 M1
NFPA 260:2019
UNI 9177 Classe 1
UNI 9175 Classe 1 IM
US CA TB 117-2013

CATEGORY N / CATEGORIA N



technical specifications / specifiche tecniche



- COLLECTION / COLLEZIONE
kvadrat-SAHCO
BALBOA
DESIGNER Najberg
- COMPOSITION / COMPOSIZIONE
100% Polyester FR
- ABRASION / ABRASIONE
100.000 cycles, Martindale
(EN ISO 12947)
- PILLING
4, scale 1-5
(EN ISO 12945-2)
- LIGHT FASTNESS / SOLIDITÀ ALLA LUCE
4-6, scale 1-8
(EN ISO 105-B02)
- SOUND ABSORPTION / ASSORBIMENTO ACUSTICO
folded: $\alpha_w = 0.80$ Class B
(ISO 11654)
- FLAME RESISTANCE / RESISTENZA AL FUOCO
BS 5852 Crib 5
BS 5867 Part 2 Type B
EN 1021-1/2
EN 13501, B-s1, d0
IMO FTP Code 2010: Part 8
ÖNORM B1/Q1
SN 198 898 5.2
UNI 9175 Classe 1 IM
US CA TB 117-2013

APPROVED / OMOLOGATO

