

Etch™

● Etch™ Barley  
in Emerald

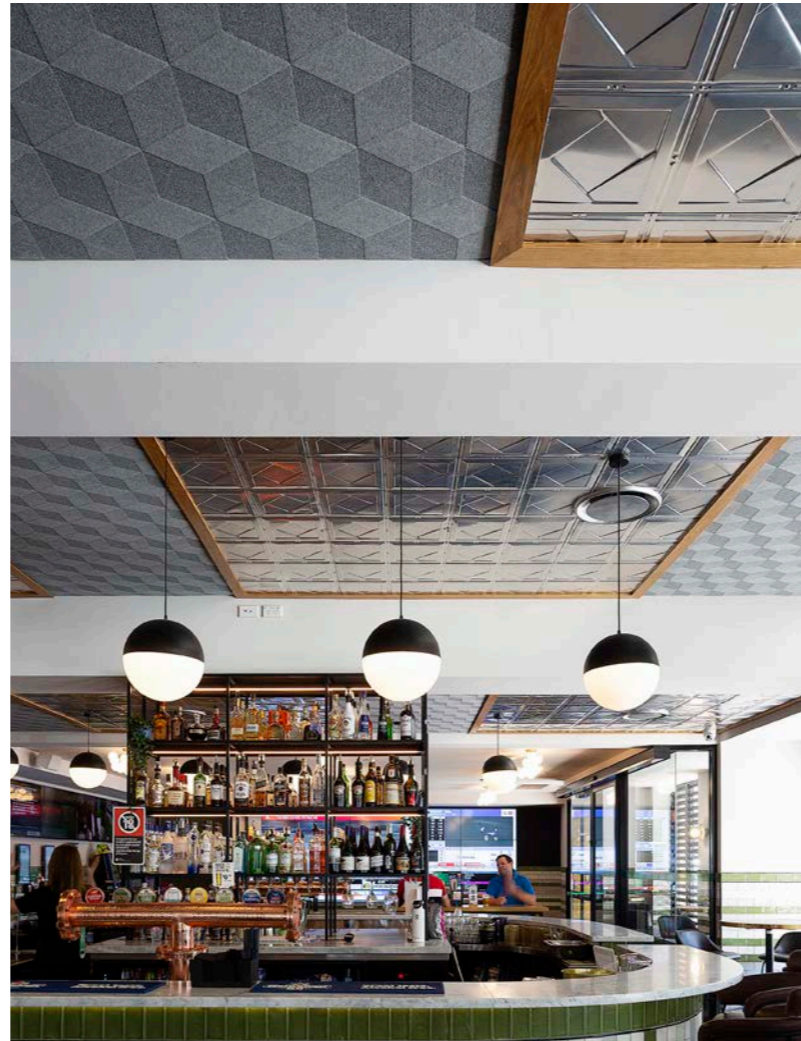
● Parliamentary Library,  
New Zealand



## Go ahead, embellish it

Etch™ is a customisation tool used to create both simple, understated patterns and intricate, eye-catching motifs. Laser etched, the embossed and debossed patterns give the fabric a tactile quality—a lick of luxury for decorative wallcoverings, acoustic panel overlays, and furnishings.

To find out more about Etch  
visit [www.autexglobal.com](http://www.autexglobal.com)



#### Features and benefits

- Can be used as a furnishing fabric, wallcovering, and acoustic panel overlay
- Endless customisation options
- Choose from a palette of 30 colours

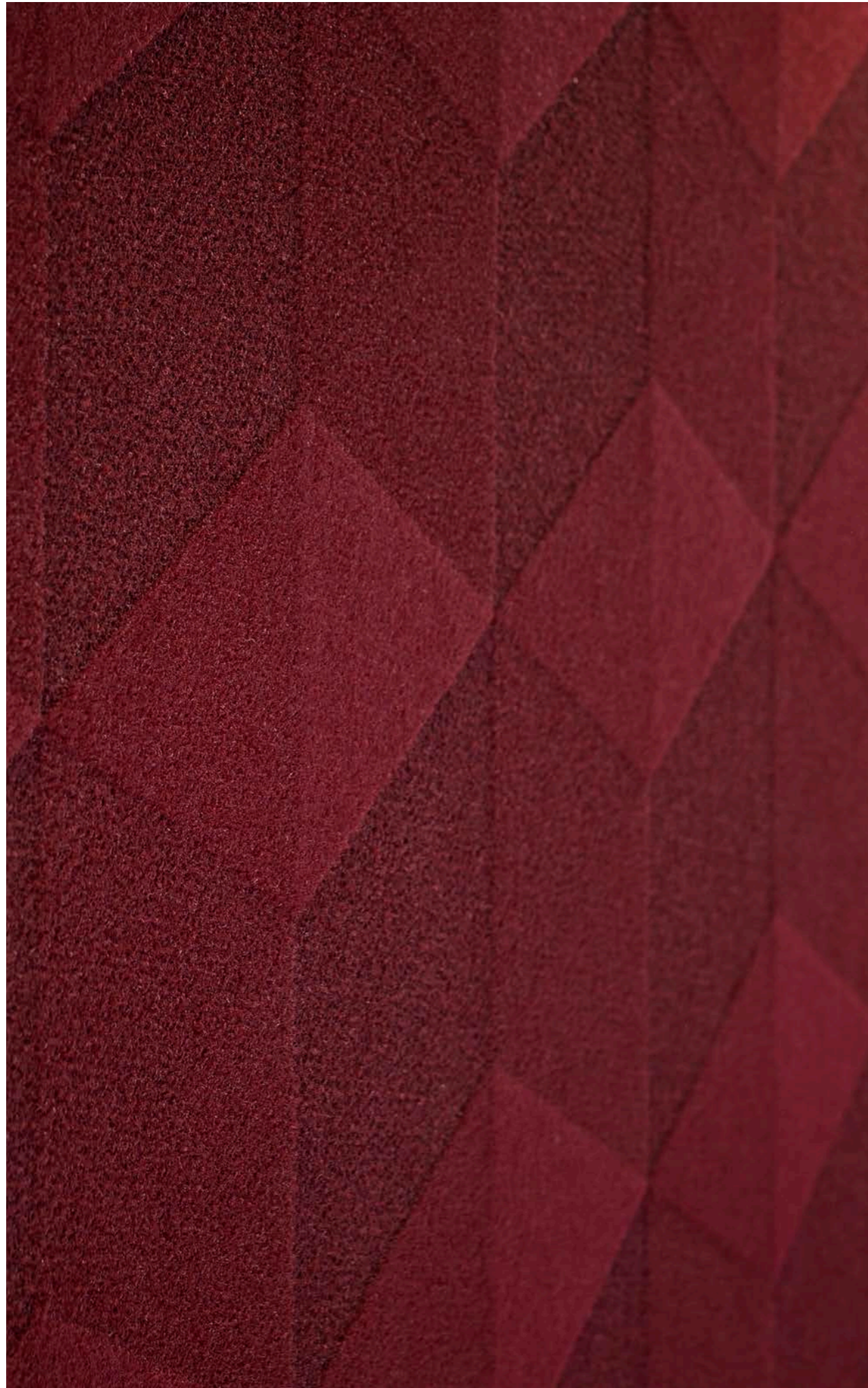
#### Applications

- Decorative customisation for a variety of applications in interior spaces
- Overlay on an acoustic backing for a decorative acoustic treatment
- 6 mm, 12 mm, 25 mm, and 50 mm thick acoustic backing options available

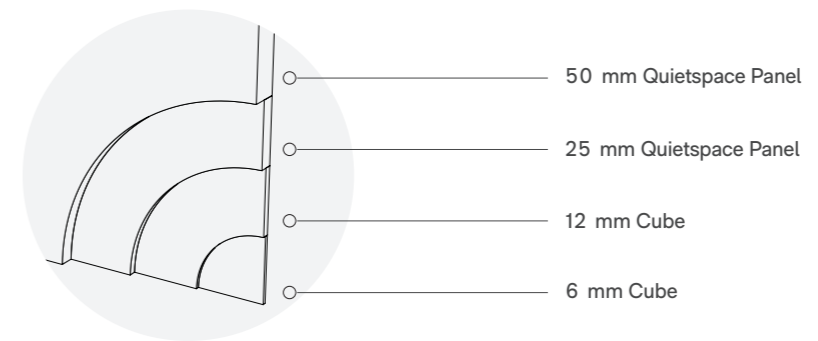
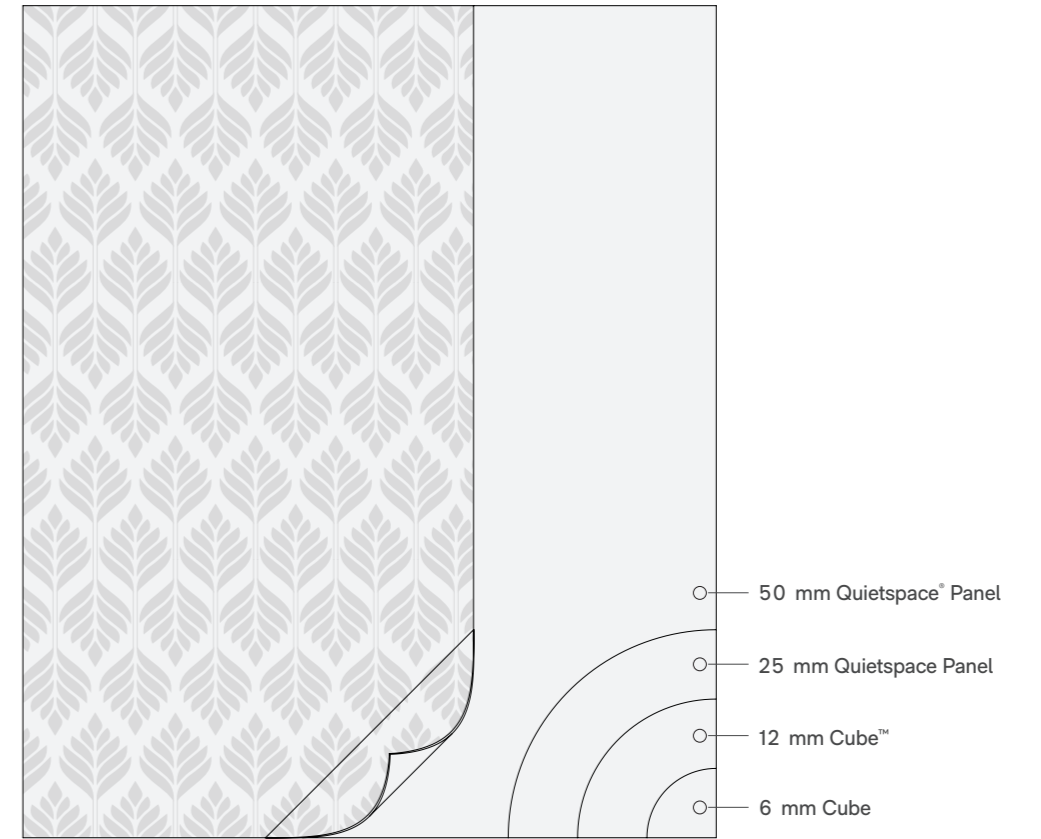
● Kotahi Logistics,  
New Zealand

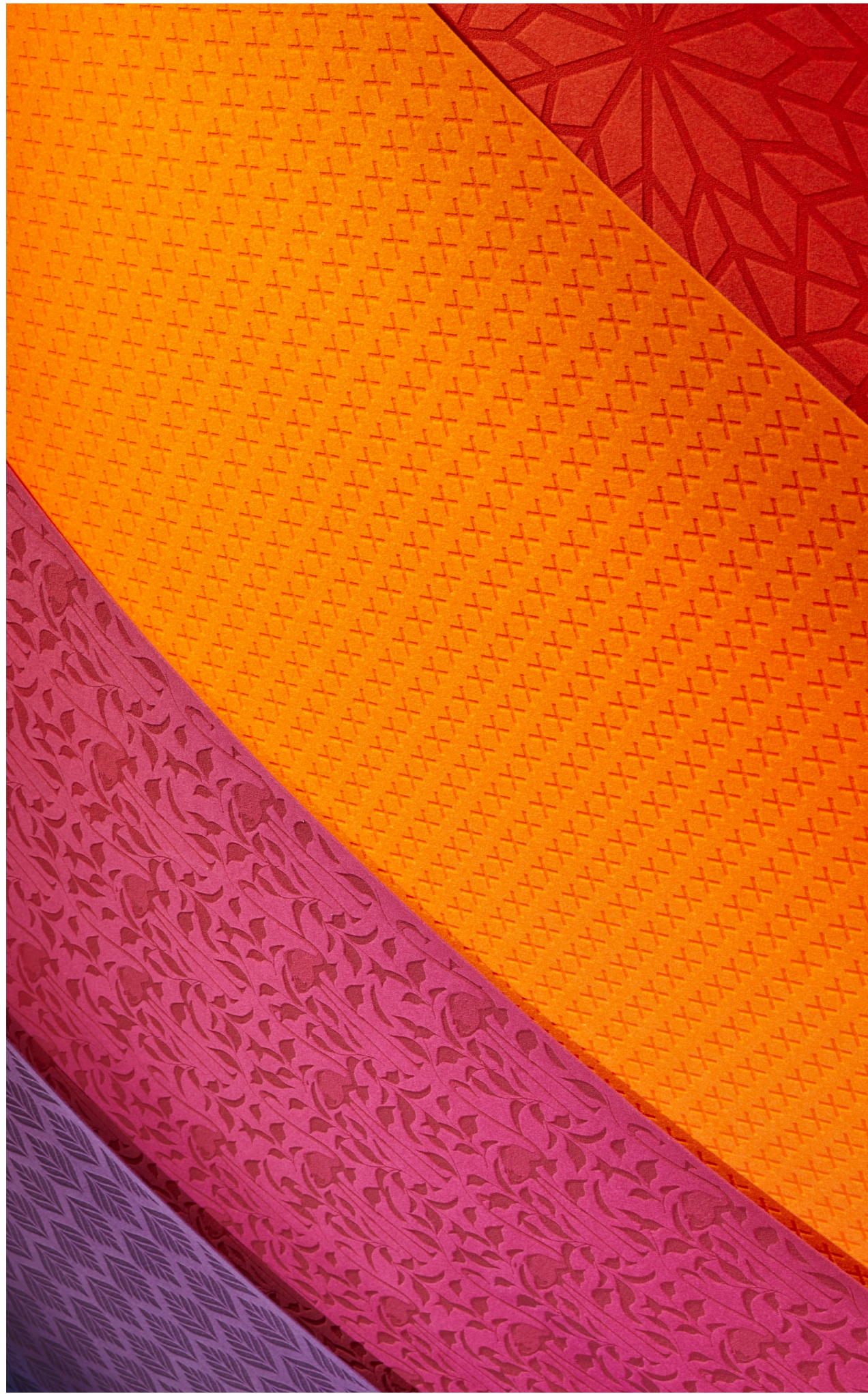
● Custom Etch in Atlantis,  
Brilliant Orange, Civic and Silver





## Pick your backing





## Pick your pattern

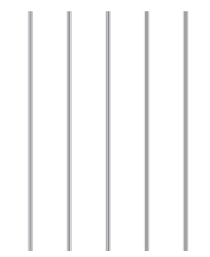
Choose from our range of pattern suggestions, or create your own bespoke design.



Stitch



Dots



Pinstripe



Harlequin



Zoo



Jaws



Cosmic



School Days



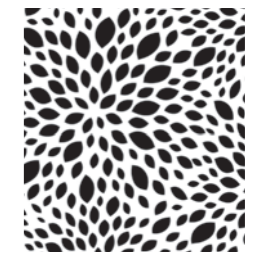
Mosaic



Tropics



Baroque



Burst



Alphabet Soup



Flamingo



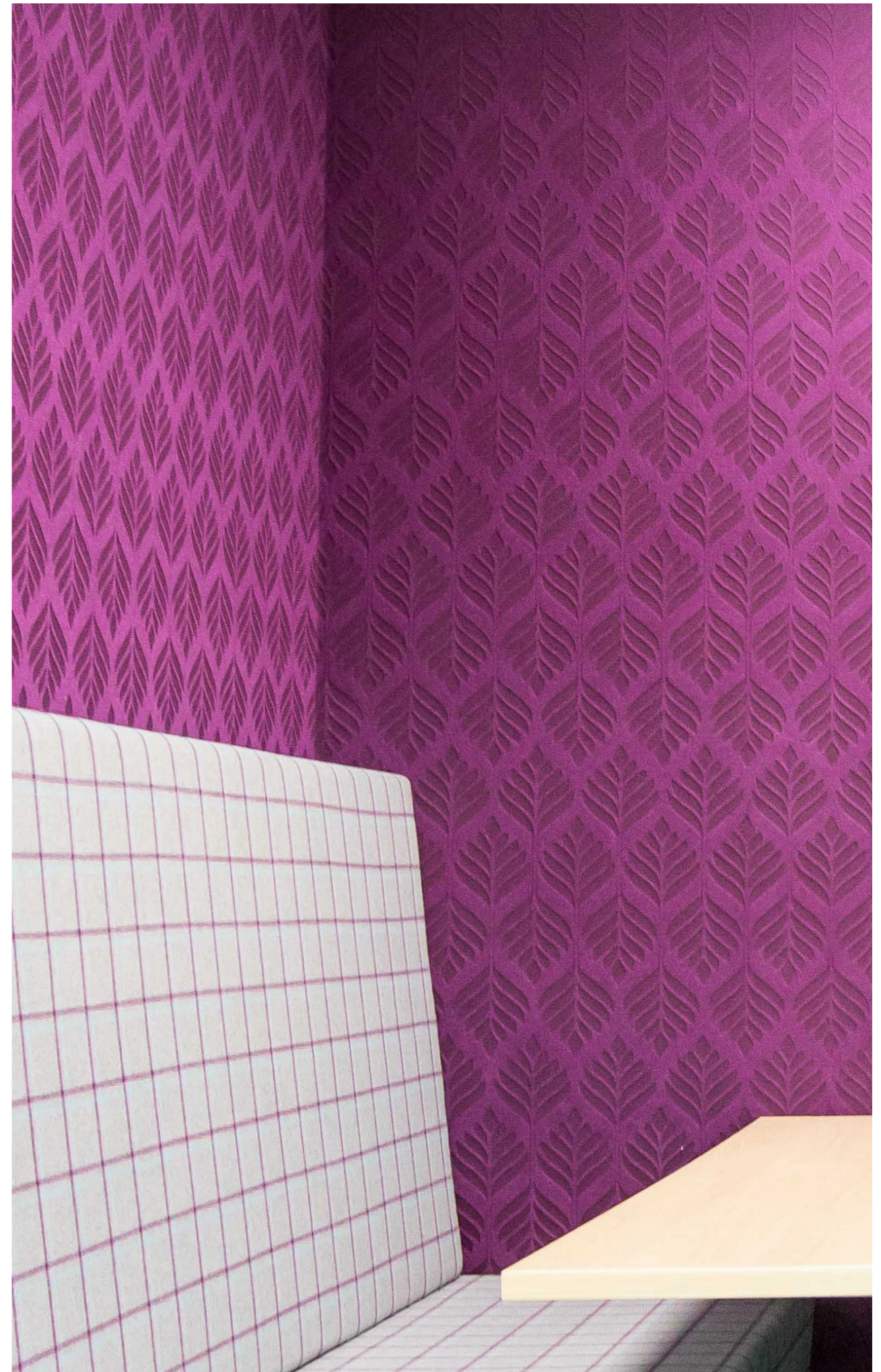
Barley

● Massey University,  
New Zealand

● Etch Pinstripe  
in Civic

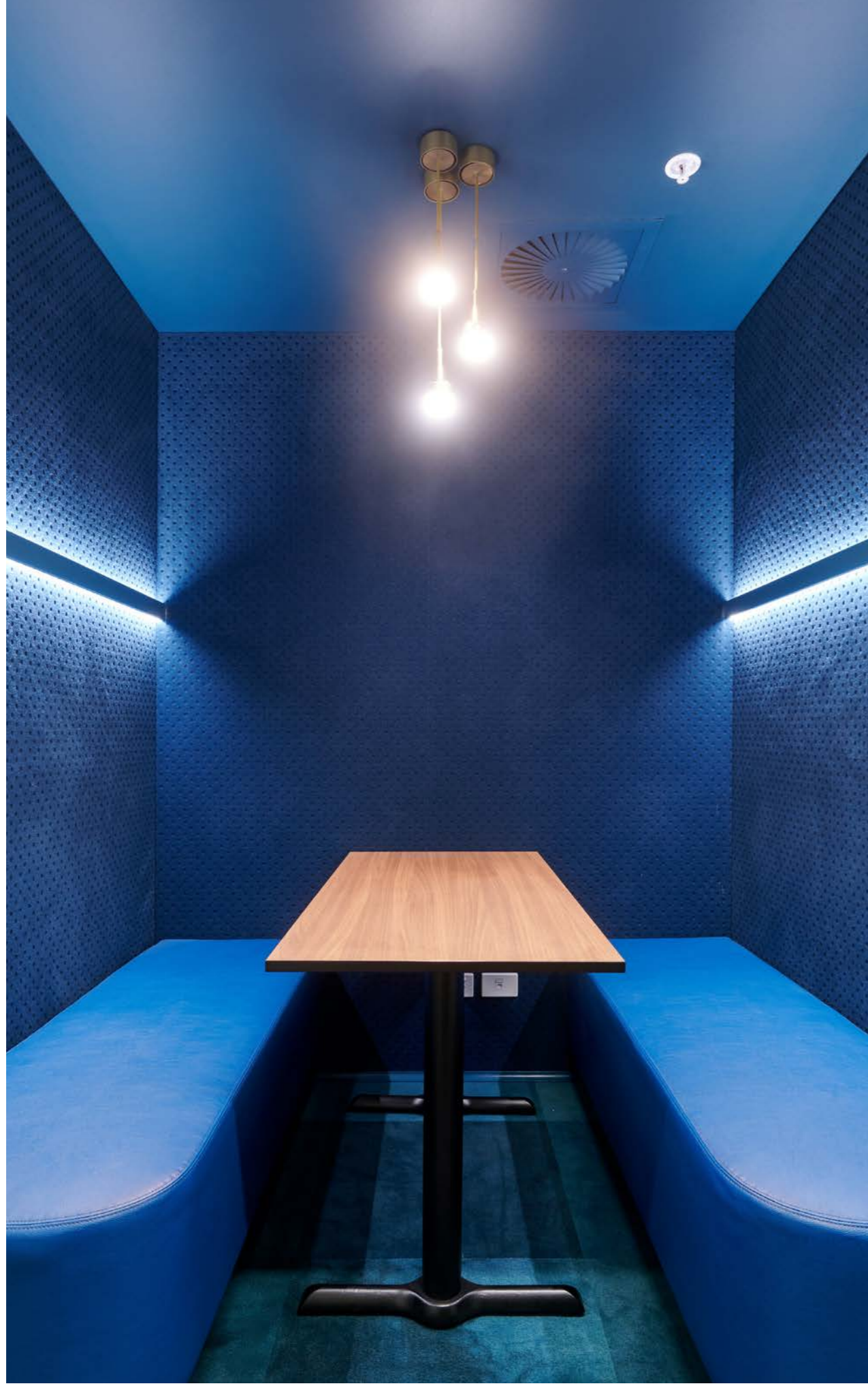


# Colour options





● Etch Dots  
in Octane



● St Georges Terrace,  
Australia



● Etch Burst  
in Atlantis and Stately

● Emmanuel Anglican College,  
Australia



## Caring for the environment

Etch is manufactured using 100% polyester fibre and contains a minimum of 80% recycled fibre (from PET plastics). Our products are designed to be recycled at the end of their life too.

We have continual improvement programmes in which we implement a range of initiatives to mitigate the environmental 'hotspots' that we have identified. Our products are GreenRate Level A, Health Product Declaration (HPD), and CDHP Standard certified.

Etch is DeclareSM certified to be Red List free and can be used in Living Building Challenge projects. Autex has a high functioning Environmental Management System (ISO 14001) to enhance our environmental performance and contribute to sustainable development.



Declare.



● **Autex Industries Ltd**

702-718 Rosebank Rd  
Private Bag 19988  
Avondale 1746, Auckland  
New Zealand  
Freephone 0800 428 839  
Phone +64 9 828 9179  
Fax +64 9 828 5810

● **Autex Australia Pty Ltd**

166 Bamfield Road  
PO Box 5099  
West Heidelberg, Melbourne  
VIC 3081, Australia  
Freephone 1800 678 160  
Phone +61 3 9457 6700  
Fax +61 3 9457 1020

● **Autex Acoustics Ltd**

Unit J4, Lowfields Way,  
Lowfields Business Park,  
Elland, West Yorkshire  
Hx5 9Da  
United Kingdom  
Phone +44 0 1422418899

● **Autex Acoustics LLC**

1630 Dan Kipper Dr,  
Riverside, CA 92507  
United States of America  
Phone +1 424 203 1813

An ISO 9001, ISO 14001 and ISO 45001 certified company. The brand names and logos mentioned herein are registered or unregistered trademarks either owned or used under license by Autex Industries Limited or other members of the Autex Group. The contents of this document are protected by Copyright 2021 Autex Industries Ltd. All Rights Reserved. It is the user's responsibility to determine if the product and information presented in this document is suitable for the intended application by engaging a suitably qualified consultant. The information contained in this document is correct to the best of our knowledge at the date of its publication. To verify that this document is the most current publication please check our website or contact your Autex account manager.