



$$\frac{d}{dx} \left(\frac{1}{x^2} \right) = \frac{d}{dx} x^{-2} = -2x^{-3} = -\frac{2}{x^3}$$
$$= \frac{d}{dx} \left(\frac{1}{x^2} \right) = -\frac{2}{x^3}$$



$$\frac{d}{dx} \left(\frac{1}{x^2} \right) = -\frac{2}{x^3}$$
$$= \frac{d}{dx} \left(x^{-2} \right) = -2x^{-3} = -\frac{2}{x^3}$$



$$= \frac{d}{dx} \left(\frac{1}{x^2} \right) = -\frac{2}{x^3}$$



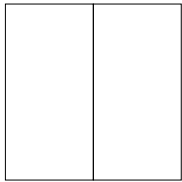
SILK SPACES

By connecting multiple boards made of Silk glass, you can create a large continuous writing surfaces with minimal reflections. The unique surface gives our 24 selected colours a deep appearance and a rich, silky hue that responds to changing light throughout the day. A revolutionary matte writing surface.

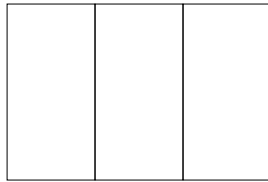
Concealed fittings
 Depth from wall 12 mm
 Matte Silk-glass surface
 24 standard colours
 Magnetic
 4 mm optic glass

Article number	Name	Size w x h mm	Weight kg
41537MZ-2-colour code	Silk Spaces, 2 boards	2000 x 2000	83,3
41537MZ-3-colour code	Silk Spaces, 3 boards	3000 x 2000	83,3
41537MZ-4-colour code	Silk Spaces, 4 boards	4000 x 2000	111
41537MZ-5-colour code	Silk Spaces, 5 boards	5000 x 2000	140

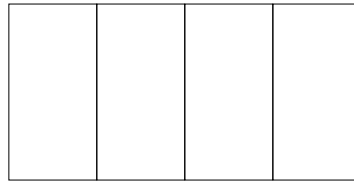
Custom colours available on request



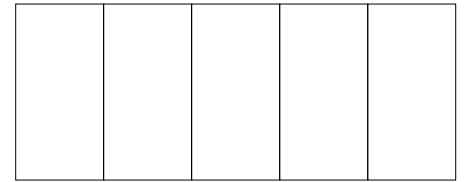
2000x 2000
41537Z-2



3000 x 2000
41537Z-3



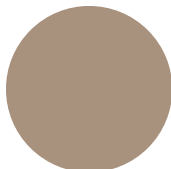
4000 x 2000
41537Z-4



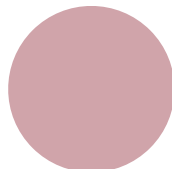
5000 x 2000
41537Z-5



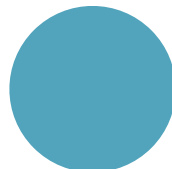
Shy - 120



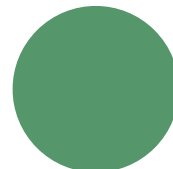
Cozy - 450



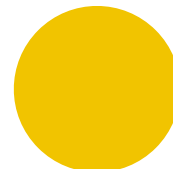
Desirable - 620



Cool - 310



Hopeful - 510



Happy - 700



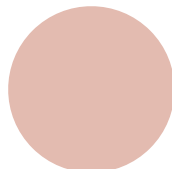
Wild - 660



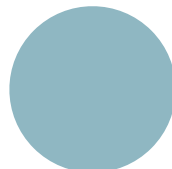
Soft - 150



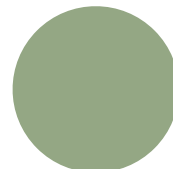
Warm - 160



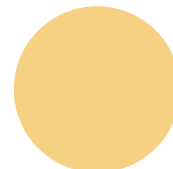
Naive - 640



Calm - 320



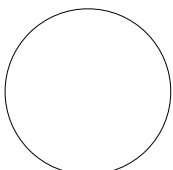
Gentle - 560



Lively - 460



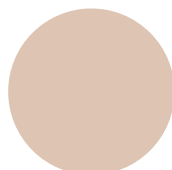
Excited - 420



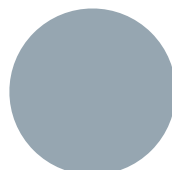
Pure - 130



Lazy - 140



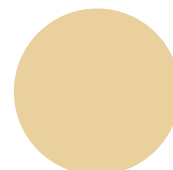
Neat - 650



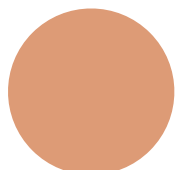
Smooth - 340



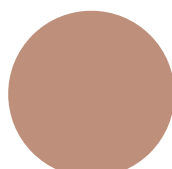
Fair - 550



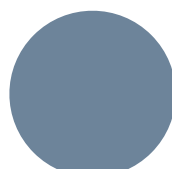
Mellow - 730



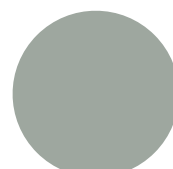
Lush - 470



Innocent - 670



Bold - 330



Frank - 540