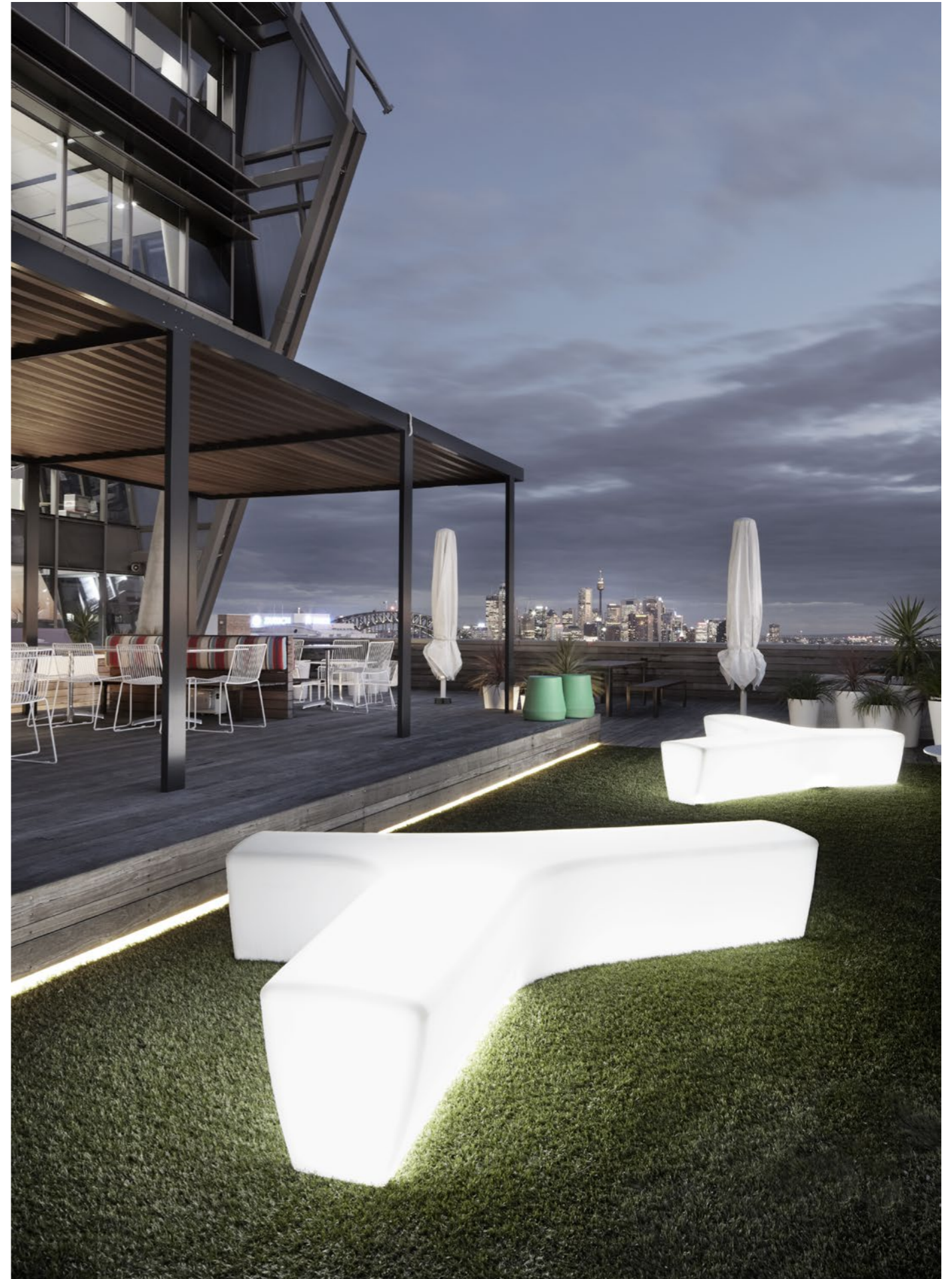




TWIG









## TWIG

### Designer

Alexander Lotersztain  
2008

### Material

seat & light seat: LDPE plastic  
upholstered seat: plywood substrate &  
enviro-foam

### Finish

seat: LDPE colours  
light seat: translucent  
upholstered seat: upholstered fabric/  
leather

see page 129 for finish options

### Optional add-ons

floor fixable  
water fillable  
fire retardant<sup>(1)</sup>

### Warranty

5 year structural

### Electrical

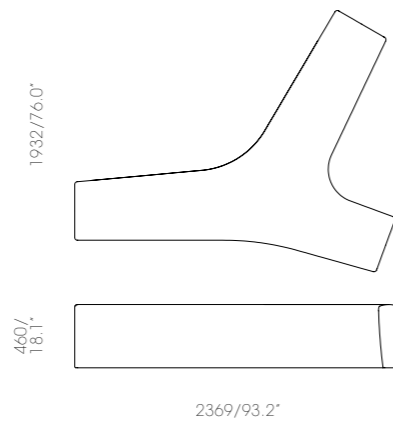
UL listed components  
4000K colour temperature

### Note

indoor & outdoor product  
(1) not available for upholstered or  
light variant.

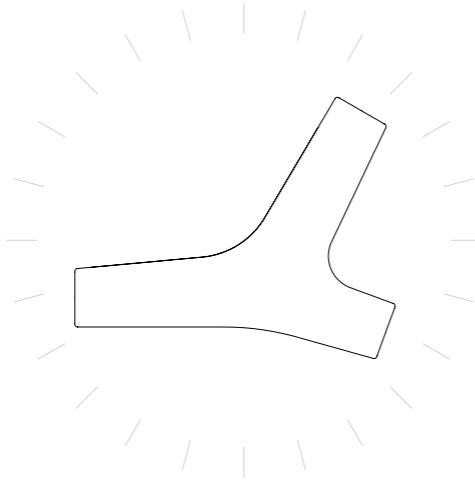
#### SEAT

##### TWG-01



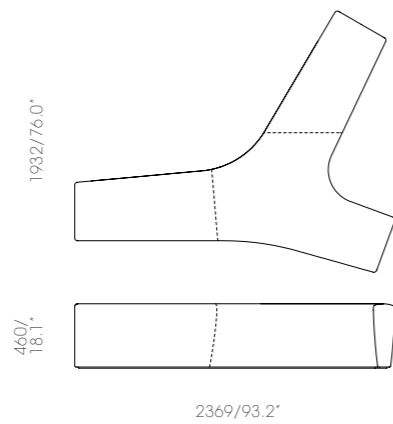
#### LIGHT SEAT

##### TWG-02



#### UPHOLSTERED SEAT

##### TWG-03



#### SIDE TABLE

##### TWG-04

