

2022

FINISHES

PEDRALI

FINISHES

Pedrali SpA

Sp 122 Mornico Al Serio

24050 Bergamo - Italy

Export Dept. Tel: +39 035 8358840

Ufficio Commerciale Italia Tel: +39 035 8358810

info@pedrali.it

www.pedrali.it

FINISHES_22_01

2022

PEDRALI®

Material for upholstery and cushions

Rivestimenti per imbottiture e cuscini

	FABRIC	FIRE RETARDANT FABRIC	OUTDOOR FABRIC	GENUINE HARD LEATHER	REGENERATED HARD LEATHER	SIMIL LEATHER	FIRE RETARDANT SIMIL LEATHER	VELVET	FIRE RETARDANT VELVET
Category A	●	●	●	●	●	●	●	●	●
Category B	●	●	●	●	●	●	●	●	●
Category C	●	●	●	●	●	●	●	●	●
Category D	●	●	●	●	●	●	●	●	●
Category E	●	●	●	●	●	●	●	●	●
Category F	●	●	●	●	●	●	●	●	●
Category G	●	●	●	●	●	●	●	●	●
Category H	●	●	●	●	●	●	●	●	●
Category N	●	●	●	●	●	●	●	●	●
Category P	●	●	●	●	●	●	●	●	●

Legend

Legenda

 Fire-retardant Ignifugo	 Outdoor use Adatto per uso esterno	
washing / lavaggio		
 Do not wash Lavaggio a secco	 Do not tumble dry Non asciugare in asciugatrice	
 Hand wash Lavaggio a mano	 Dry flat Asciugare disteso	
 Wash at max 30°C normal Lavaggio normale, max 30°C	 Do not wring Non strizzare	
 Wash at max 30°C mild Lavaggio delicato, max 30°C	ironing / stiratura	
 Wash at max 40°C normal Lavaggio normale, max 40°C	 Do not iron Non stirare	
 Wash at max 60°C mild Lavaggio delicato, max 60°C	 Iron at low temperature Stirare a bassa temperatura	
dry cleaning / lavaggio a secco		
 Do not dry clean Lavaggio a secco non consentito	 Iron at medium temperature Stirare a media temperatura	
 Dry clean, perchloroethylene (PCE) Lavaggio a secco con percloroetilene (PCE)	bleaching / candeggiio	
 Gentle dry cleaning with PCE Lavaggio a secco delicato con PCE	 Do not bleach Non candeggiare	
	 Any bleaching agent allowed Candeggiio consentito	



Compliant to Ecolabel UE environmental requirements
Conforme ai requisiti ambientali Ecolabel UE



Product certified for low chemical emissions:
Prodotto certificato per basse emissioni chimiche:
UL.COM/GG
UL 2818



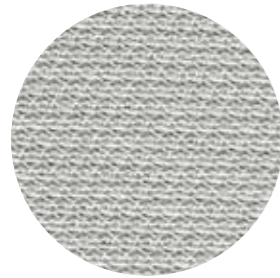
96/98/CE - 2010/68/UE EU marine equipment rules compliant
Conforme ai requisiti europei per equipaggiamenti marittimi

Upholstery Collections

Collezioni imbottiti

Fabrics Tessuti

CATEGORY B / CATEGORIA B

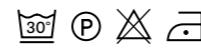


B 01



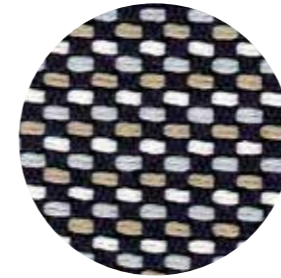
B 02

technical specifications / specifiche tecniche

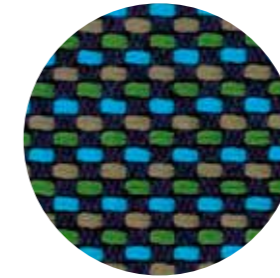


- **COMPOSITION / COMPOSIZIONE**
100% Nylon (Support film PVC)
- **ABRASION / ABRASIONE**
>50.000 cycles, Martindale (UNI EN ISO 12947:00)
- **RUBBING FASTNESS / SOLIDITÀ ALLO SFREGAMENTO**
5, scale 1-5 (UNI EN ISO 105 X12:97)
- **PILLING**
5, scale 1-5 (UNI EN ISO 12945-2:00)
- **LIGHT FASTNESS / SOLIDITÀ ALLA LUCE**
5, scale 1-8 (UNI EN ISO 105-B02:01)

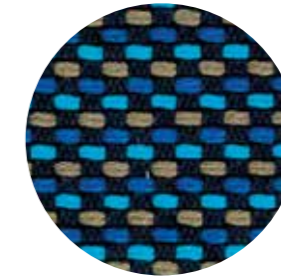
CATEGORY C / CATEGORIA C



C 37



C 38

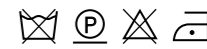


C 39



C 36

technical specifications / specifiche tecniche

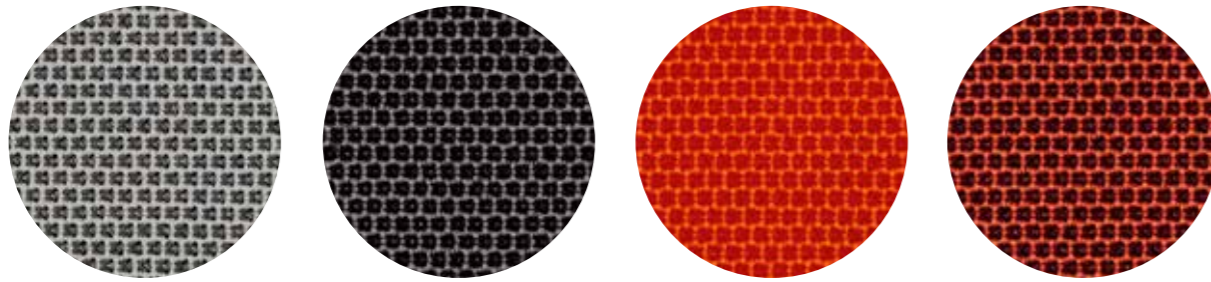


- **COMPOSITION / COMPOSIZIONE**
94% Cotton
6% Polyamide
- **ABRASION / ABRASIONE**
40.000 cycles, Martindale (BS EN ISO 12947-2 1999)
- **RUBBING FASTNESS / SOLIDITÀ ALLO SFREGAMENTO**
Dry 4-5 and Wet 2-3, scale 1-5 (BS EN ISO 105-X12:1995)
- **PILLING**
4, scale 1-5 (BS EN ISO 12945-2:2001 to 5.000 cycles)
- **LIGHT FASTNESS / SOLIDITÀ ALLA LUCE**
4-5 (light colours)
5 (medium-dark colours) (BS EN ISO 105-B02:2001)

only for collection / solo per collezione



Island

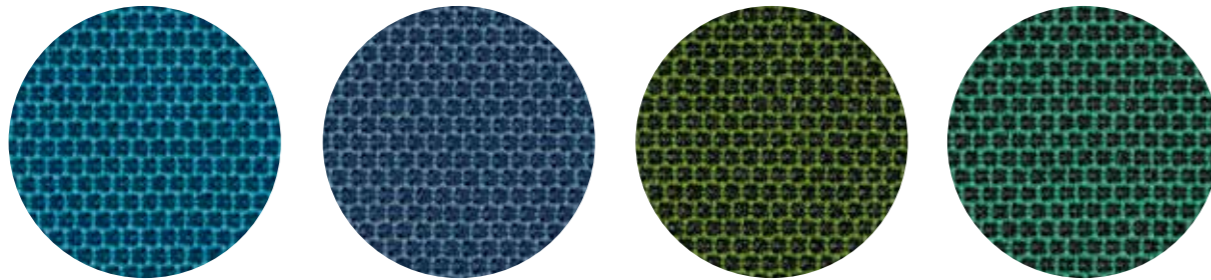


C 101

C 86

C 85

C 89

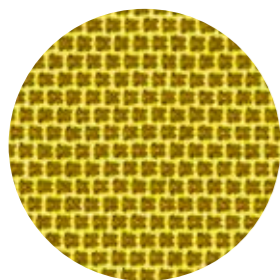


C 83

C 100

C 84

C 88



C 87

technical specifications / specifiche tecniche

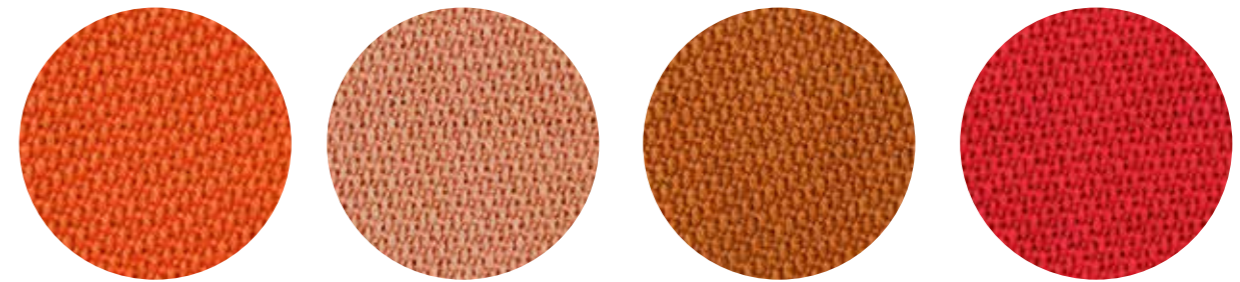


- COMPOSITION / COMPOSIZIONE
54% New Zealand Wool
44% Post-consumer recycled, polyester
2% Polyamide
- ABRASION / ABRASIONE
100.000 cycles, Martindale
(EN ISO 12947-2)

- RUBBING FASTNESS / SOLIDITÀ ALLO SFREGAMENTO
Dry and Wet 4-5, scale 1-5
(EN ISO 105-X12:1995)
- PILLING
4-5, scale 1-5 (EN ISO 12945-2)
- LIGHT FASTNESS / SOLIDITÀ ALLA LUCE
5-7, scale 1-8 (EN ISO 105-B02)

- FLAME RESISTANCE
RESISTENZA AL FUOCO
BS EN 1021 1&2
BS EN 1021-1
ÖNORM A3800-1
US CA TB 117-2013

- APPROVED / OMOLOGATO

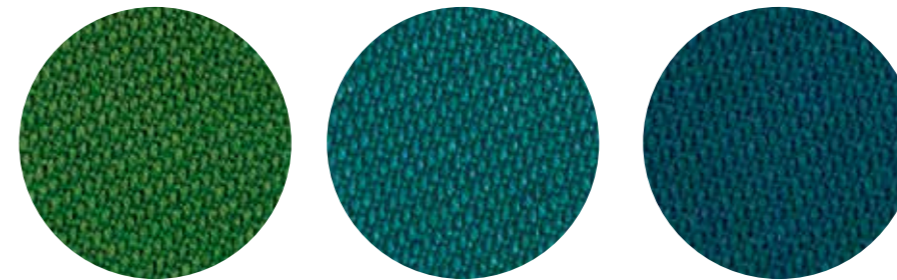


C 110

C 111

C 112

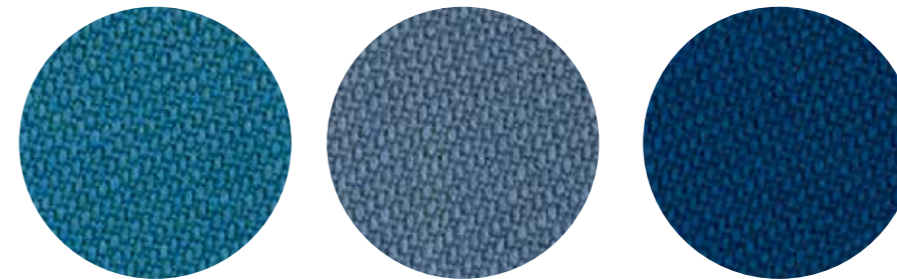
C 113



C 117

C 118

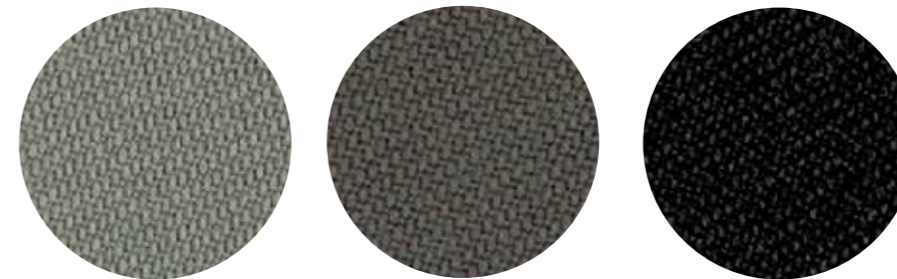
C 119



C 120

C 121

C 122



C 114

C 115

C 116

technical specifications / specifiche tecniche

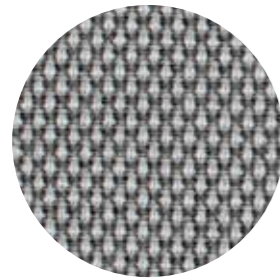
- APPROVED / OMOLOGATO



- COLLECTION / COLLEZIONE
svensson - SEMI
- COMPOSITION / COMPOSIZIONE
85% Wool, 15% Polyamide
- ABRASION / ABRASIONE
100.000 cycles,
Martindale
(EN ISO 12947-2)
- RUBBING FASTNESS
SOLIDITÀ ALLO SFREGAMENTO
Dry 4 and Wet 3-4, scale 1-5
(EN ISO 105-X12)
- LIGHT FASTNESS
SOLIDITÀ ALLA LUCE
5-7, scale 1-8
(EN ISO 105-B02)
- FLAME RESISTANCE / RESISTENZA AL FUOCO
BS 5852 Crib 5
EN ISO 1021 Part 1&2
IMO FTP Code 2010: Part 8
UNI 9175 Classe 1 IM



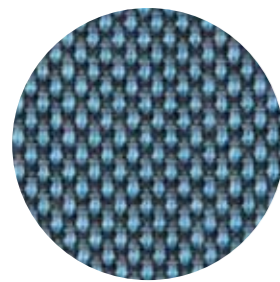
CATEGORY D / CATEGORIA D



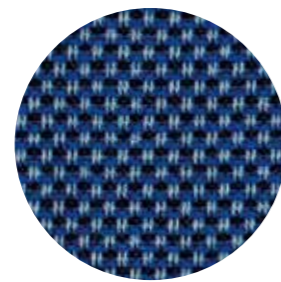
D 40



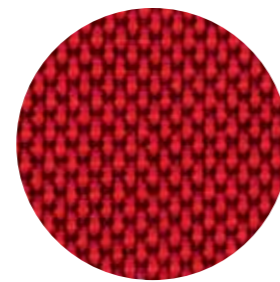
D 41



D 43



D 44



D 42

technical specifications / specifiche tecniche

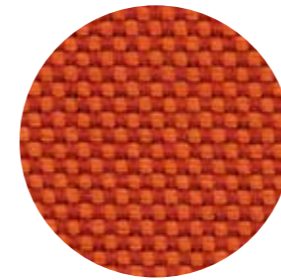


- **COMPOSITION / COMPOSIZIONE**
88% New Zealand Wool
12% Polyamide
- **ABRASION / ABRASIONE**
100.000 cycles, Martindale
(EN ISO 12947-2)
- **RUBBING FASTNESS / SOLIDITÀ ALLO SFREGAMENTO**
Dry and Wet 4-5, scale 1-5
(EN ISO 105-X12)
- **PILLING**
4-5, scale 1-5 (EN ISO 12945-2)
- **LIGHT FASTNESS / SOLIDITÀ ALLA LUCE**
5-7, scale 1-8 (EN ISO 105-B02)
- **FLAME RESISTANCE / RESISTENZA AL FUOCO**
BS EN 1021 1&2
BS 5852 Part 1 0, 1
UNI 9175 Classe 1 IM
US CA TB 117-2013

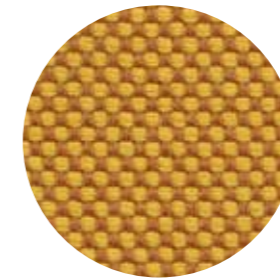
- APPROVED / OMOLOGATO



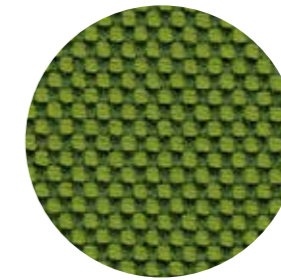
CATEGORY G / CATEGORIA G



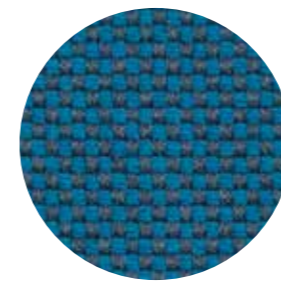
G 170



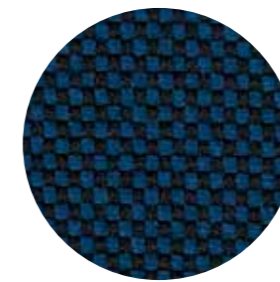
G 171



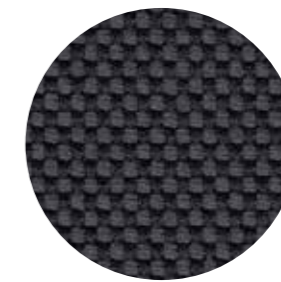
G 172



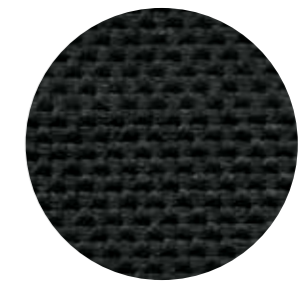
G 173



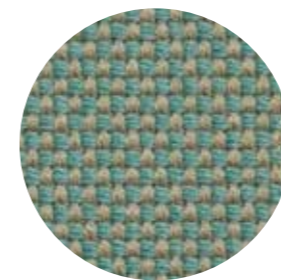
G 174



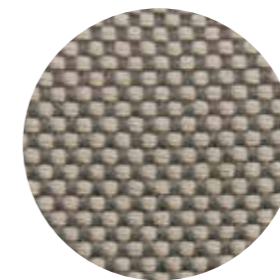
G 175



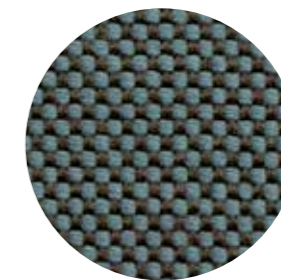
G 176



G 210



G 211



G 212



G 213

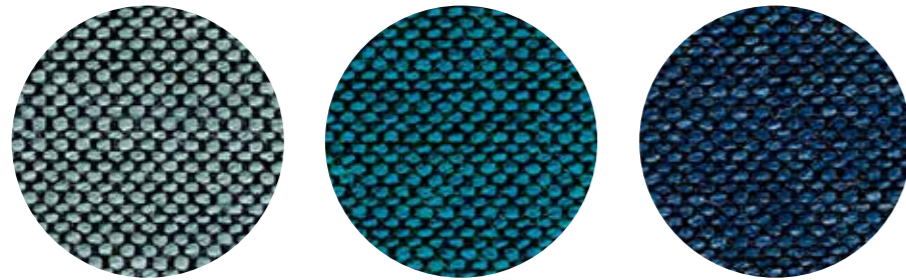
technical specifications / specifiche tecniche



- **COMPOSITION / COMPOSIZIONE**
96% Virgin Wool
4% Polyamide
- **ABRASION / ABRASIONE**
90.000 cycles, Martindale
(DIN EN ISO 12947-2)
- **PILLING**
4-5, scale 1-5 (EN ISO 12945-2)
- **LIGHT FASTNESS / SOLIDITÀ ALLA LUCE**
5-8, scale 1-8 (EN ISO 105-B02)
- **SOUND ABSORPTION / ASSORBIMENTO ACUSTICO**
folded: $\alpha_w = 0.95$ Class A (ISO 11654)
- **FLAME RESISTANCE / RESISTENZA AL FUOCO**
BS 5852:1979 (Part 1)
BS 5852:2006 (Part 2) Crib 5
DIN 4102-1 B2
EN 13501-1
EN 1021 -1 and -2
FAR 25.853 (12 sec. vertical)
IMO: 2014/90/EU (MED)
US CA TB 117-2013

- APPROVED / OMOLOGATO

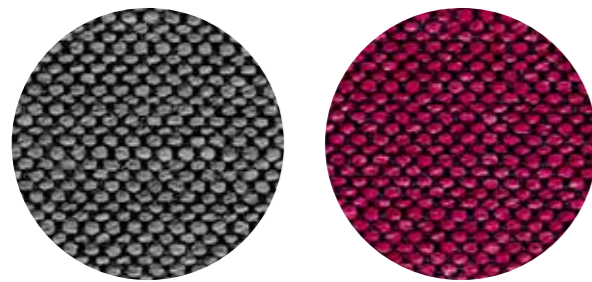




G 154

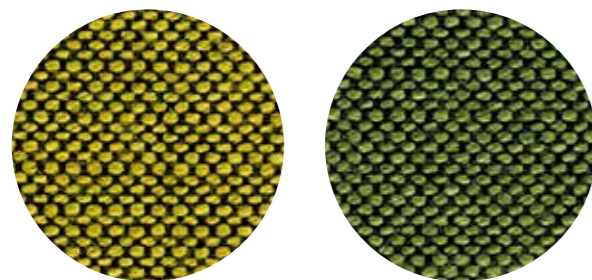
G 155

G 156



G 151

G 150



G 152

G 153

technical specifications / specifiche tecniche

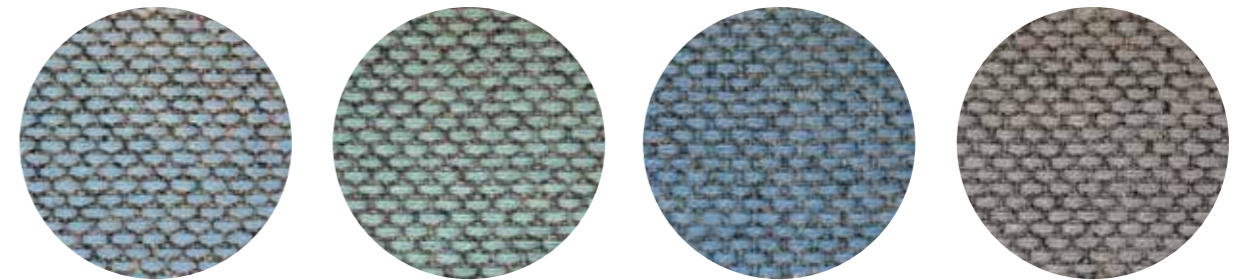


- COLLECTION / COLLEZIONE
svensson - BALANCE
- COMPOSITION / COMPOSIZIONE
82% Wool
12% Rami
6% Polyamide

- ABRASION / ABRASIONE
100.000 cycles, Martindale (EN ISO 12947-2)
- RUBBING FASTNESS / SOLIDITÀ ALLO SFREGAMENTO
Dry 4 and Wet 3-4, scale 1-5 (EN ISO 105-X12)
- LIGHT FASTNESS / SOLIDITÀ ALLA LUCE
5-7, scale 1-8 (EN ISO 105-B02)

- FLAME RESISTANCE / RESISTENZA AL FUOCO
BS 5852 Crib 5
EN ISO 1021 Part 1&2
IMO FTP Code 2010: Part 8
UNI 9175 Classe 1 IM
US CA TB 117-2013

- APPROVED / OMOLOGATO

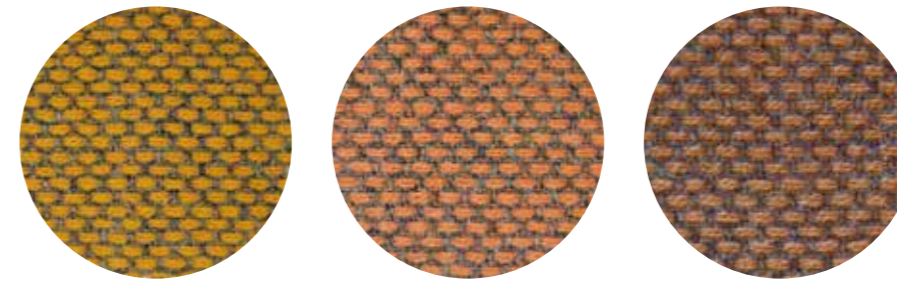


G 143

G 145

G 144

G 146



G 140

G 141

G 142

technical specifications / specifiche tecniche



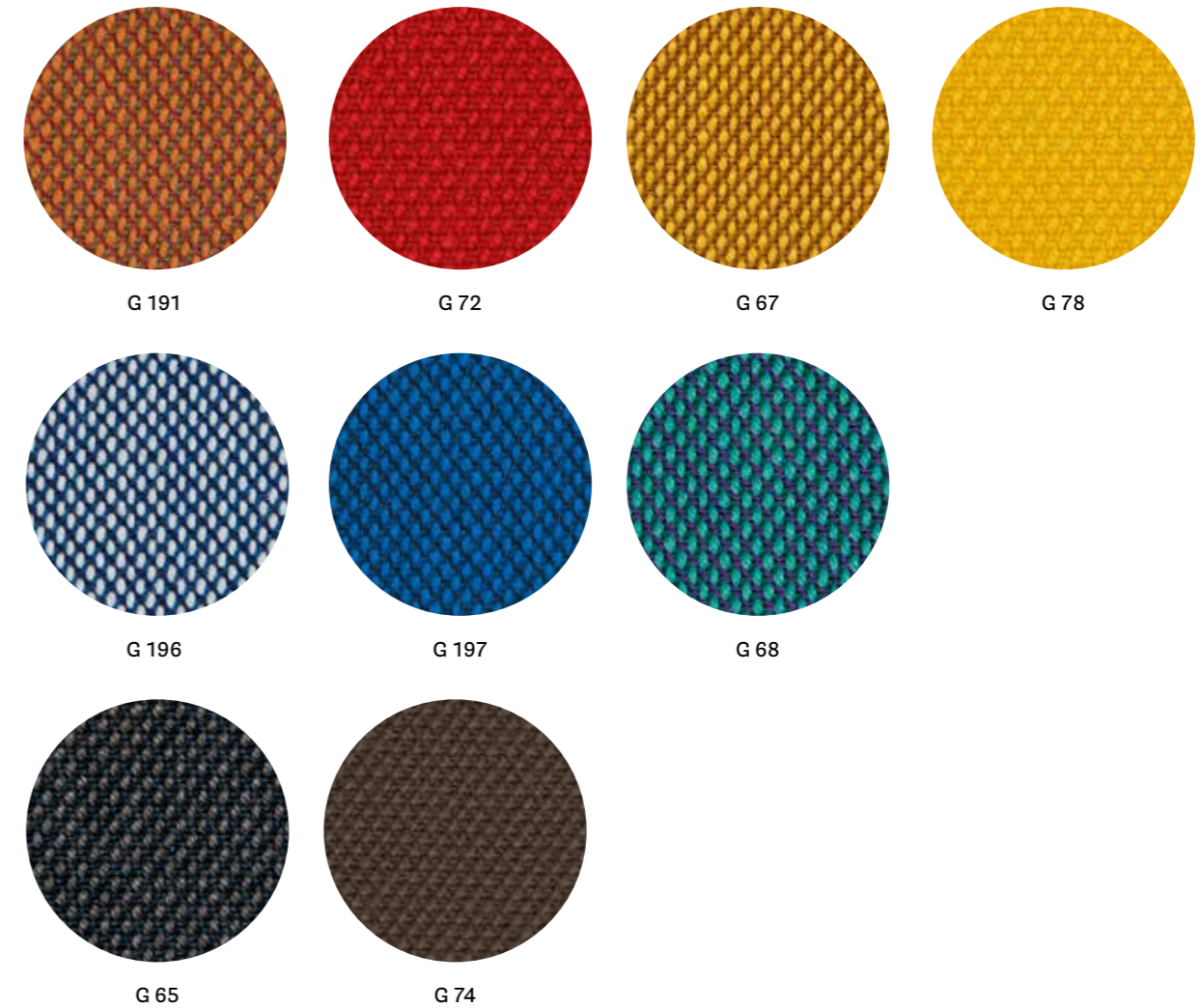
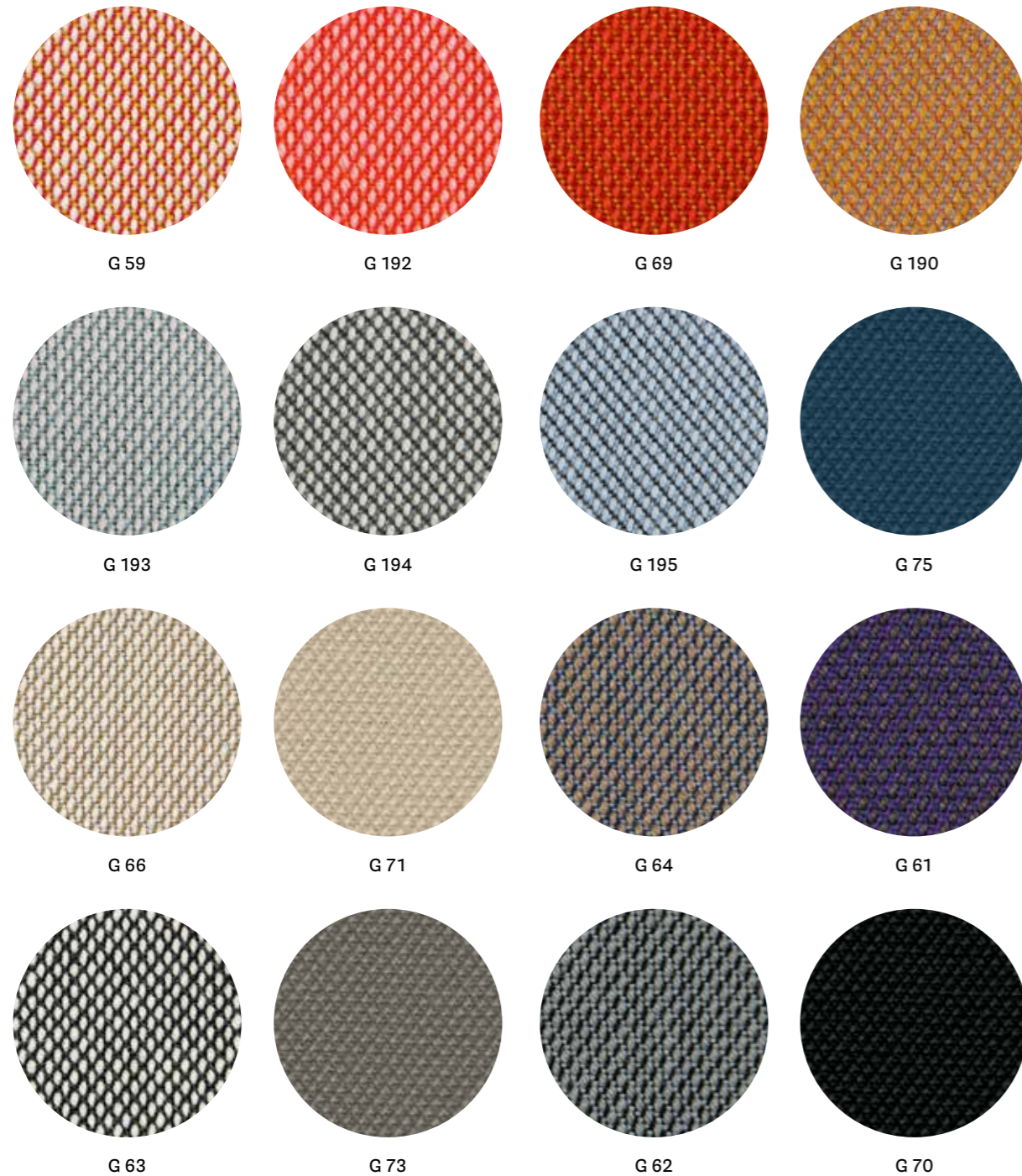
- COLLECTION / COLLEZIONE
kvadrat - RE-WOOL
DESIGNER Margrethe Odgaard
- COMPOSITION / COMPOSIZIONE
45% Recycled wool
45% New wool
10% Nylon
- ABRASION / ABRASIONE
50.000 cycles, Martindale (DS/EN ISO 12947-2:2016)

- RUBBING FASTNESS / SOLIDITÀ ALLO SFREGAMENTO
Dry and Wet 4-5, scale 1-5 (ISO 105-X12)
- PILLING
4, scale 1-5 (EN ISO 12945)
- LIGHT FASTNESS / SOLIDITÀ ALLA LUCE
5-7, scale 1-8 (ISO 105-B02:2014)
- SOUND ABSORPTION / ASSORBIMENTO ACUSTICO
folded: $\alpha_w = 0.75$ Class C (ISO 11654)

- FLAME RESISTANCE / RESISTENZA AL FUOCO
AS/NZS 1530.3
AS/NZS 3837 Class 2
BS 5852 Part 1
BS 5852 Crib 5 with treatment
BS 5852 IGNITION SOURCE 3
EN 1021 - 1/2
IMO FTP Code 2010: Part 8
NF D60-013
ÖNORM B1/Q1
UNI 9175 Classe 1IM
US CA TB 117-2013

- APPROVED / OMOLOGATO





technical specifications / specifiche tecniche



• COLLECTION / COLLEZIONE

kvadrat

G59+G69; G190+G197: STEELCUT TRIO
G70+G78: STEELCUT
DESIGNERS Dijkmeijer & Ridolfo

• COMPOSITION / COMPOSIZIONE

90% New wool
10% Nylon

• ABRASION / ABRASIONE

100.000 cycles; for G70+G78: 80.000 cycles
Martindale (DS/EN ISO 12947-2:2016)

• PILLING

4, scale 1-5; for G70+G78: 3-4, scale 1-5
(EN ISO 12945)

• LIGHT FASTNESS / SOLIDITÀ ALLA LUCE

5-7, scale 1-8 (EN ISO 105-B02)

• SOUND ABSORPTION / ASSORBIMENTO ACUSTICO

folded: $\alpha_w = 0.95$ Class A
for G70+G78: folded: $\alpha_w = 0.80$ Class B
(ISO 11654)

• FLAME RESISTANCE / RESISTENZA AL FUOCO

AS/NZS 1530.3
AS/NZS 3837 Class 2
BS 5852 Part 1
BS 5852 Crib 5 with treatment
BS 5852 IGNITION SOURCE 3
EN 1021 - 1/2
GB 50222 B1 with treatment
IMO FTP Code 2010: Part 8

NF D60-013
NFPA 260
ÖNORM B1/Q1
SN 198 898 5.3 with treatment
UNI 9175 Classe 1 IM
US CA TB 117-2013

• APPROVED / OMOLOGATO

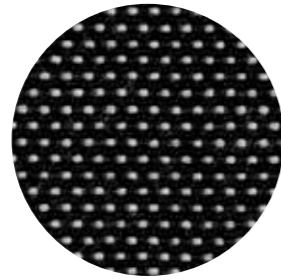


PRODUCT CERTIFIED
FOR LOW CHEMICAL
EMISSIONS:
UL COMF03
UL 2818
170166-420

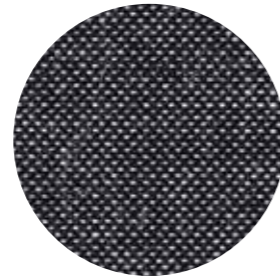
CATEGORY G / CATEGORIA G



G 101



G 100



G 102

technical specifications / specifiche tecniche



- COLLECTION / COLLEZIONE
kvadrat - BASEL
DESIGNERS Herzog & de Meuron
- COMPOSITION / COMPOSIZIONE
90% New wool
10% Nylon
- ABRASION / ABRASIONE
50.000 cycles,
Martindale (EN ISO 12947-2:1998)

- PILLING
4, scale 1-5 (EN ISO 12945)
- LIGHT FASTNESS / SOLIDITÀ ALLA LUCE
6-7, scale 1-8 (ISO 105-B02)
- FLAME RESISTANCE / RESISTENZA AL FUOCO
AS/NZS 3837 Class 2
BS 5852 Part 1
BS 5852 Crib 5 with treatment

EN 1021 – 1/2
GB 50222 B1 with treatment
IMO FTP Code 2010: Part 8
NFPA 260
NF D60-013
ÖNORM B1/Q1
SN 198 898 5.3 with treatment
UNI 9175 Classe 1 IM
US CA TB 117-2013

APPROVED / OMOLOGATO



PRODUCT CERTIFIED FOR LOW CHEMICAL EMISSIONS:
UL COM/CGG
UL 2818
170166-420

CATEGORY G / CATEGORIA G



G 120



G 121



G 122

technical specifications / specifiche tecniche



- COLLECTION / COLLEZIONE
kvadrat - MOLLY
DESIGNER Åsa Pärson
- COMPOSITION / COMPOSIZIONE
100% New wool
- ABRASION / ABRASIONE
75-100.000 cycles,
Martindale (EN ISO 12947-2:1998)

- PILLING
3-4, scale 1-5 (EN ISO 12945)
- LIGHT FASTNESS / SOLIDITÀ ALLA LUCE
6-7, scale 1-8 (ISO 105-B02)
- FLAME RESISTANCE / RESISTENZA AL FUOCO
BS 5852 Part 1
BS 5852 Crib 5 with treatment
EN 1021 – 1/2

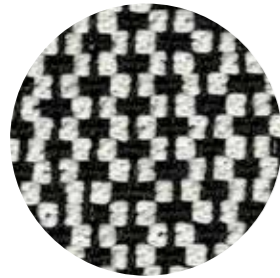
IMO FTP Code 2010: Part 8
NFPA 260
NF D60-013
ÖNORM B1/Q1
UNI 9175 Classe 1IM
US CA TB 117-2013

APPROVED / OMOLOGATO

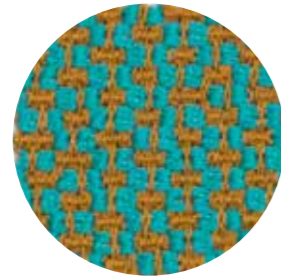


PRODUCT CERTIFIED FOR LOW CHEMICAL EMISSIONS:
UL COM/CGG
UL 2818
170166-420

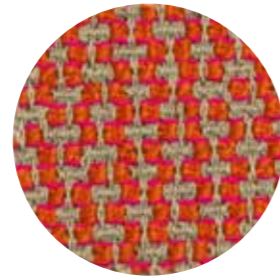
CATEGORY G / CATEGORIA G



G 130



G 131

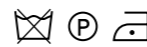


G 132



G 133

technical specifications / specifiche tecniche



- COMPOSITION / COMPOSIZIONE
95% Virgin Wool
5% Polyamide
- ABRASION / ABRASIONE
52.000 cycles, Martindale
(DIN EN ISO 12947-2)
- PILLING
4-5, scale 1-5 (EN ISO 12945-2)

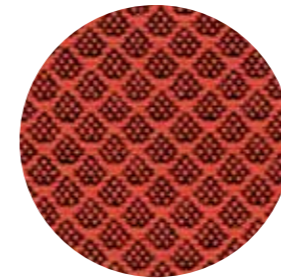
- LIGHT FASTNESS / SOLIDITÀ ALLA LUCE
5-8, scale 1-8 (EN ISO 105-B02)
- SOUND ABSORPTION / ASSORBIMENTO ACUSTICO
folded: $\alpha_w = 0.85$ Class B (ISO 11654)
- FLAME RESISTANCE / RESISTENZA AL FUOCO
BS 5852:1979 (Part 1)
BS 5852:2006 (Part 2) Crib 5
DIN 4102-1 B2

EN 1021 -1 and -2
EN 13501-1
FAR 25.853 (12 sec. vertical)
IMO: 2014/90/EU (MED)
UNI 9175 Classe 1 IM
US CA TB 117-2013

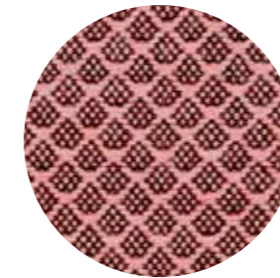
- APPROVED / OMOLOGATO



CATEGORY G / CATEGORIA G



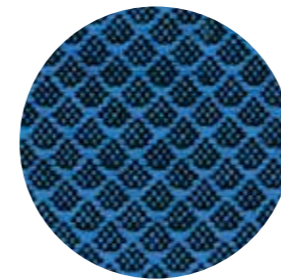
G 200



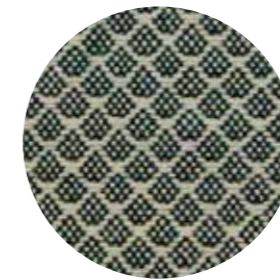
G 201



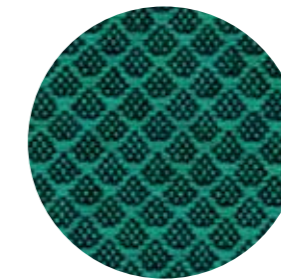
G 202



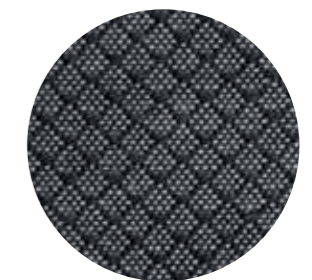
G 203



G 204



G 205



G 206

technical specifications / specifiche tecniche



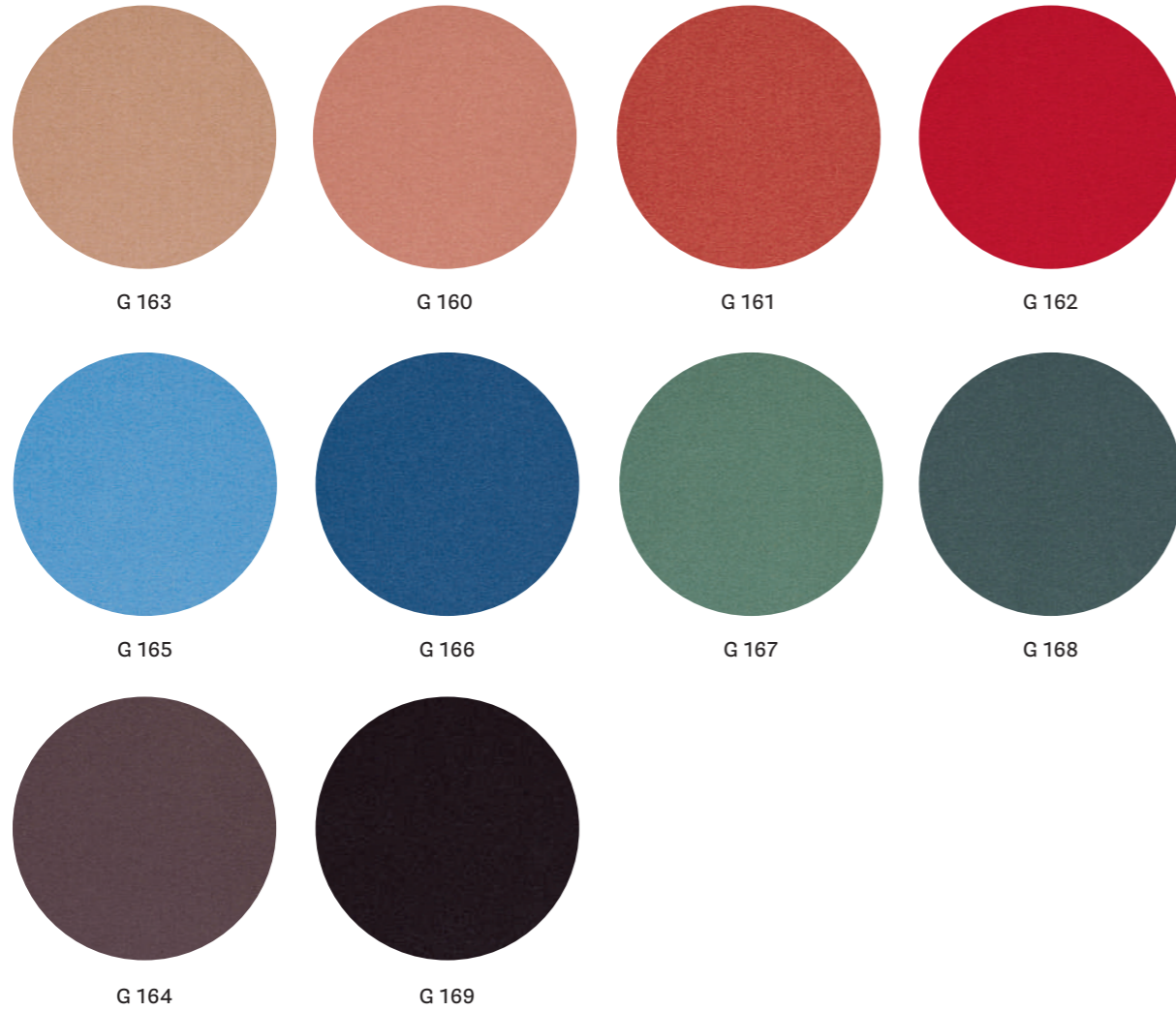
- COLLECTION / COLLEZIONE
kvadrat - JAALI
DESIGNER Doshi Levien
- COMPOSITION / COMPOSIZIONE
92% New wool
8% Nylon
- ABRASION / ABRASIONE
80.000 cycles, Martindale
(EN ISO 12947)

- RUBBING FASTNESS / SOLIDITÀ ALLO SFREGAMENTO
Dry 4-5 and Wet 3-5, scale 1-5
(EN ISO 105-X12)
- PILLING
4, scale 1-5 (EN ISO 12945)
- LIGHT FASTNESS / SOLIDITÀ ALLA LUCE
6-7, scale 1-8 (EN ISO 105-B02)

- FLAME RESISTANCE / RESISTENZA AL FUOCO
AS/NZS 1530.3
BS 5852 Part 1
BS 5852 Crib 5 with treatment
BS 5852 ignition source 3
EN 1021-1/2
IMO FTP Code 2010: Part 8
NF D60-013
SN 198 898 5.3 with treatment
UNI 9175 Classe 1IM
US CA TB 117-2013

- APPROVED / OMOLOGATO





technical specifications / specifiche tecniche



- COLLECTION / COLLEZIONE
kvadrat - HERO
DESIGNER Patricia Urquiola
- COMPOSITION / COMPOSIZIONE
96% New wool
4% Nylon
- ABRASION / ABRASIONE
45.000 cycles, Martindale
(EN ISO 12947)
- PILLING
3-4, scale 1-5 (EN ISO 12945)

- LIGHT FASTNESS / SOLIDITÀ ALLA LUCE
5-7, scale 1-8 (ISO 105-B02)
- SOUND ABSORPTION / ASSORBIMENTO ACUSTICO
folded: $\alpha_w = 0.75$ Class C (ISO 11654)
- FLAME RESISTANCE / RESISTENZA AL FUOCO
AS/NZS 3837 Class 2
BS 5852 Crib 5 with treatment
BS 5852 Part 1
EN 1021 - 1/2
IMO FTP Code 2010: Part 8
IMO FTP Code 2010: Part 7 with treatment

NF D60-013
SN 198 898 5.3 with treatment
UNI 9175 Classe 1 IM
US CA TB 117-2013



technical specifications / specifiche tecniche



- COMPOSITION / COMPOSIZIONE
88% Polyester
12% Polyurethane incl.
antistatic fibers and fire
retardant fibers in the backside
- ABRASION / ABRASIONE
150.000 cycles, Martindale
(EN ISO 12947)
- PILLING
5, scale 1-5 (EN ISO 12945)
- LIGHT FASTNESS / SOLIDITÀ ALLA LUCE
5-6, scale 1-8 (ISO 105-B02)
- RUBBING FASTNESS / SOLIDITÀ ALLO SFREGAMENTO
Dry and Wet 4/4, scale 1-5
(EN ISO 105-X12)
- FLAME RESISTANCE / RESISTENZA AL FUOCO
BS EN 1021 1&2 Cigarette and Match
BS EN 1021-1 Cigarette
ÖNORM A3800-B2-B3825-Q1 UK
NF P 92-503 M3
US CA TB 117-2013



technical specifications / specifiche tecniche

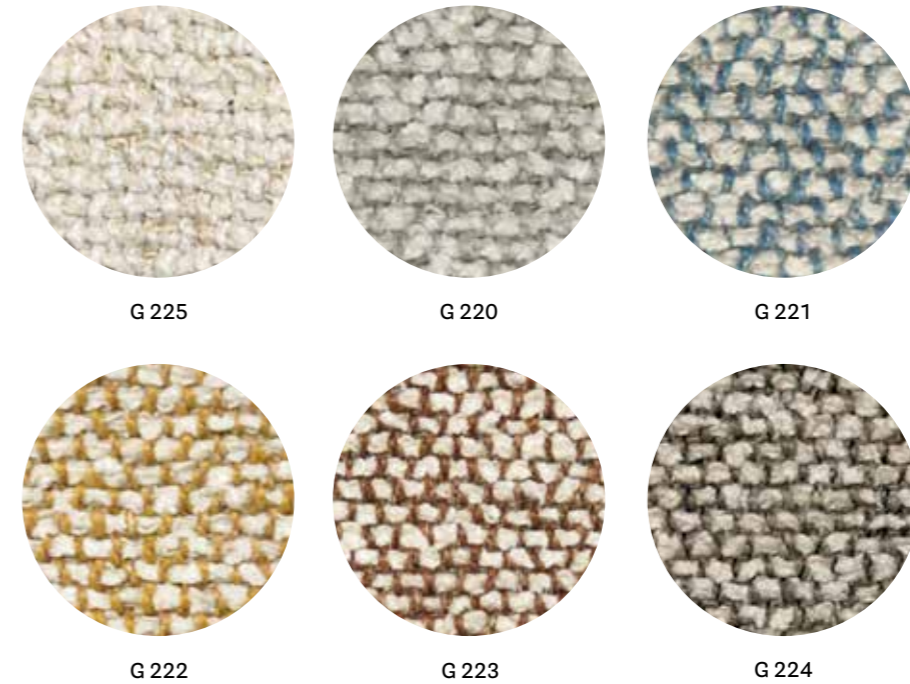


- COLLECTION / COLLEZIONE
kvadrat
G110÷G116: DIVINA MD
G21÷G25: DIVINA MELANGE
DESIGNER Finn Skødt
- COMPOSITION / COMPOSIZIONE
100% New Wool
- ABRASION / ABRASIONE
45.000 cycles, Martindale
(EN ISO 12947)
- PILLING
3, scale 1-5 (EN ISO 12945)

- LIGHT FASTNESS / SOLIDITÀ ALLA LUCE
5-7, scale 1-8 (ISO 105-B02)
- SOUND ABSORPTION / ASSORBIMENTO ACUSTICO
folded: $\alpha_w = 0.70$ Class C (ISO 11654)
- FLAME RESISTANCE / RESISTENZA AL FUOCO
AS/NZS 1530.3
BS 5852 Crib 5
BS 5852 Part 1
BS 5867 part 2 type B
EN 1021-1/2
EN 13501, C-s1, d0, glued
GB 50222 B1 with treatment
IMO FTP Code 2010: Part 8

NF D60-013
NFPA 260
ÖNORM B1/ Q1
SN 198 898 5.3 with treatment
UNI 9175 Classe 1 IM
US CA TB 117-2013

- APPROVED / OMOLOGATO



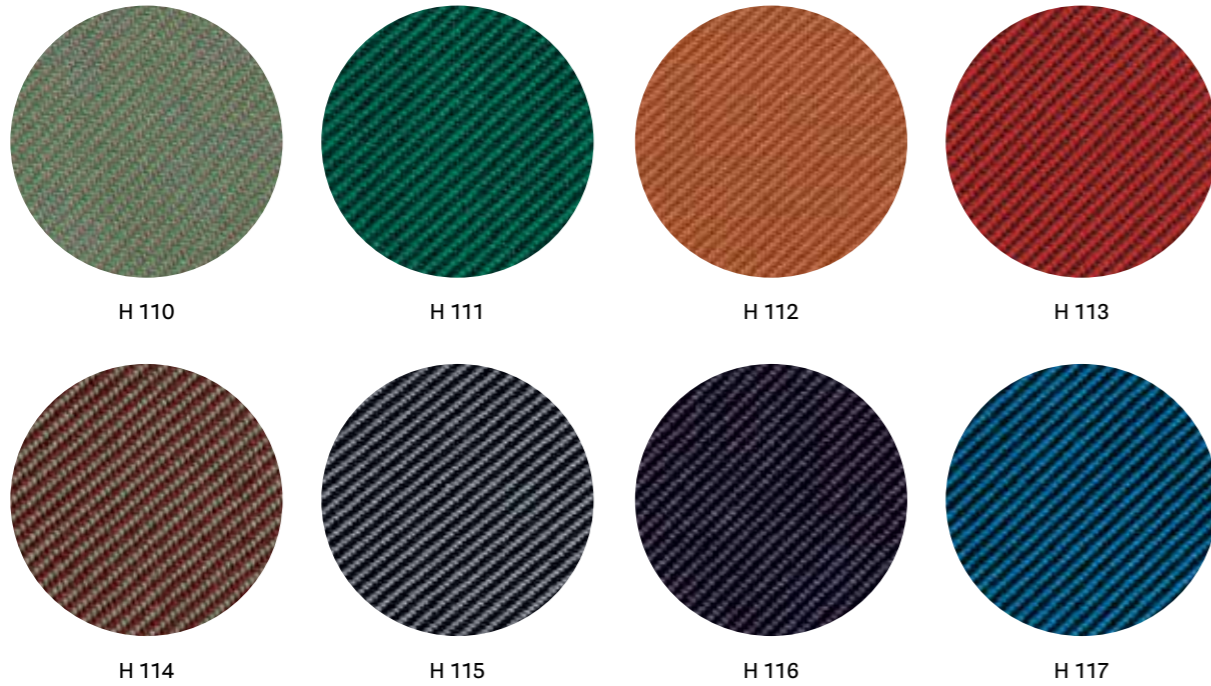
technical specifications / specifiche tecniche



- COLLECTION / COLLEZIONE
kvadrat-SAHCO
MOSS
DESIGNER Vincent Van Duysen

- COMPOSITION / COMPOSIZIONE
52% Cotton
22% Viscose
14% Polyacrylic
6% Linen
3% Nylon
3% Polyester
- ABRASION / ABRASIONE
50.000 cycles, Martindale
(EN ISO 12947)

- PILLING
4-5, scale 1-5 (EN ISO 12945)
- LIGHT FASTNESS / SOLIDITÀ ALLA LUCE
5-7, scale 1-8 (ISO 105-B02)
- FLAME RESISTANCE / RESISTENZA AL FUOCO
BS 5852 crib 5 with treatment
BS 5852 part 1
EN 1021-1/2

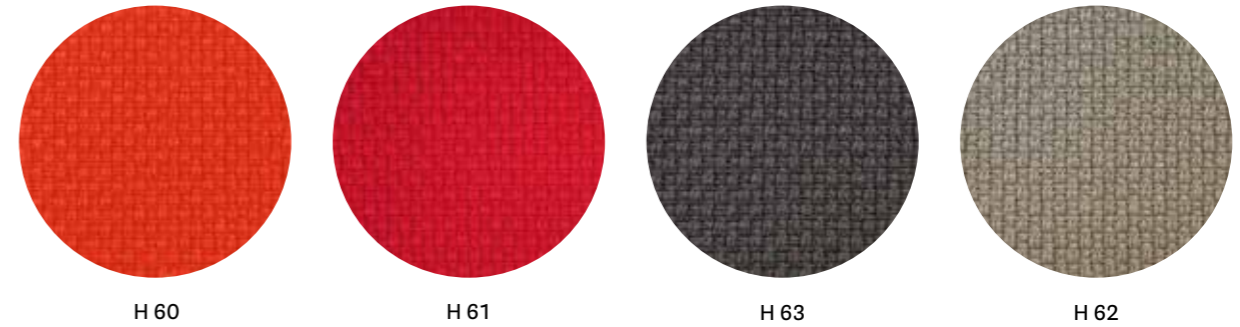


technical specifications / specifiche tecniche



- COLLECTION / COLLEZIONE
kvadrat - RELATE
DESIGNER Patricia Urquiola
- COMPOSITION / COMPOSIZIONE
100% TREVIRA CS®
- ABRASION / ABRASIONE
80.000 cycles, Martindale
(EN ISO 12947)
- RUBBING FASTNESS / SOLIDITÀ ALLO SFREGAMENTO
Dry and Wet 4-5, scale 1-5
(EN ISO 105-X12)
- PILLING
4-5, scale 1-5 (EN ISO 12945)
- LIGHT FASTNESS / SOLIDITÀ ALLA LUCE
5-7, scale 1-8 (EN ISO 105-B02)
- SOUND ABSORPTION / ASSORBIMENTO ACUSTICO
folded: $\alpha_w = 0.50$ Class D (EN ISO 354)
- FLAME RESISTANCE / RESISTENZA AL FUOCO
AS/NZS 3837, class 2
BS 5852 Crib 5
BS 5852 Part 1 with treatment
DIN 4102 B1
EN 1021-1/2
IMO FTP Code 2010: Part 8
NF D60-013
NF P92 507 M1
NFPA 701
ÖNORM B1/Q1
SN 198 898 5.2
UNI 9177 Classe 1
US CA TB 117-2013

- APPROVED / OMOLOGATO



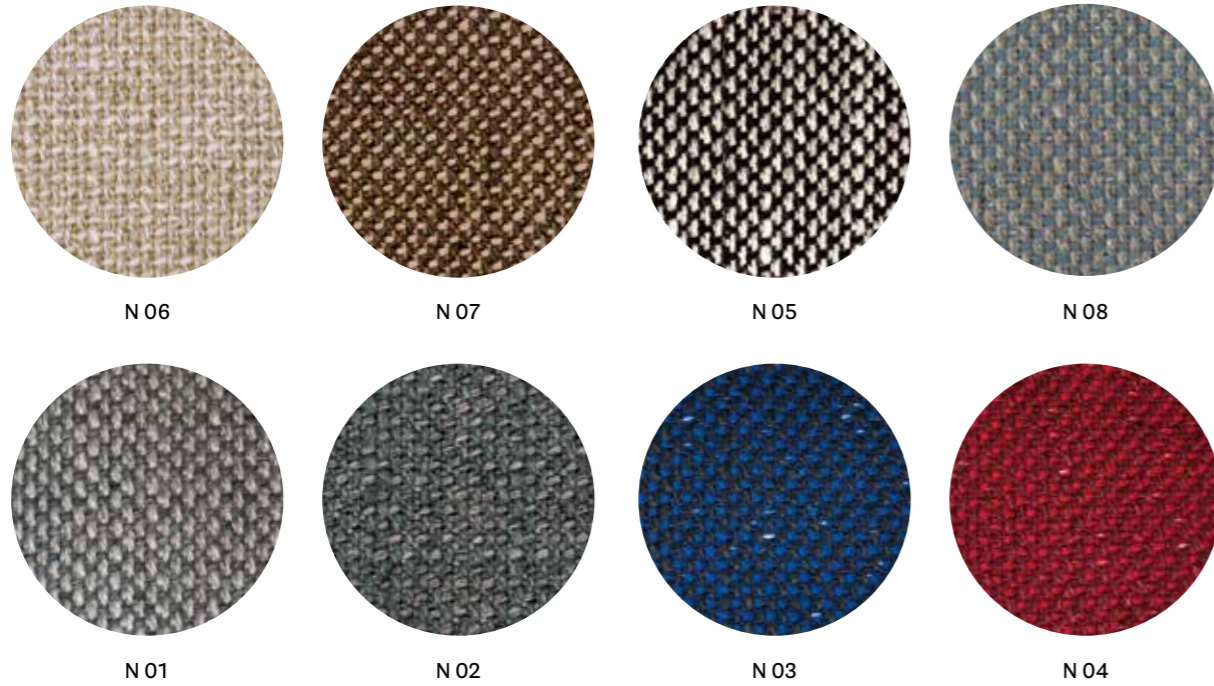
technical specifications / specifiche tecniche



- COMPOSITION / COMPOSIZIONE
92% New Zealand Wool
8% Polyamide
- ABRASION / ABRASIONE
200.000 cycles, Martindale
(EN ISO 12947-2)
- RUBBING FASTNESS / SOLIDITÀ ALLO SFREGAMENTO
Dry and Wet 4-5, scale 1-5
(EN ISO 105-X12)
- PILLING
4, scale 1-5 (EN ISO 12945-2)
- LIGHT FASTNESS / SOLIDITÀ ALLA LUCE
5-7, scale 1-8 (EN ISO 105-B02)
- FLAME RESISTANCE / RESISTENZA AL FUOCO
BS EN 1021 1&2
BS EN 1021-1
BS 5852 Part 1 0, 1
UNI 9175 Classe 1 IM
US CA TB 117-2013

- APPROVED / OMOLOGATO





Fabrics Tessuti

Outdoor

technical specifications / specifiche tecniche



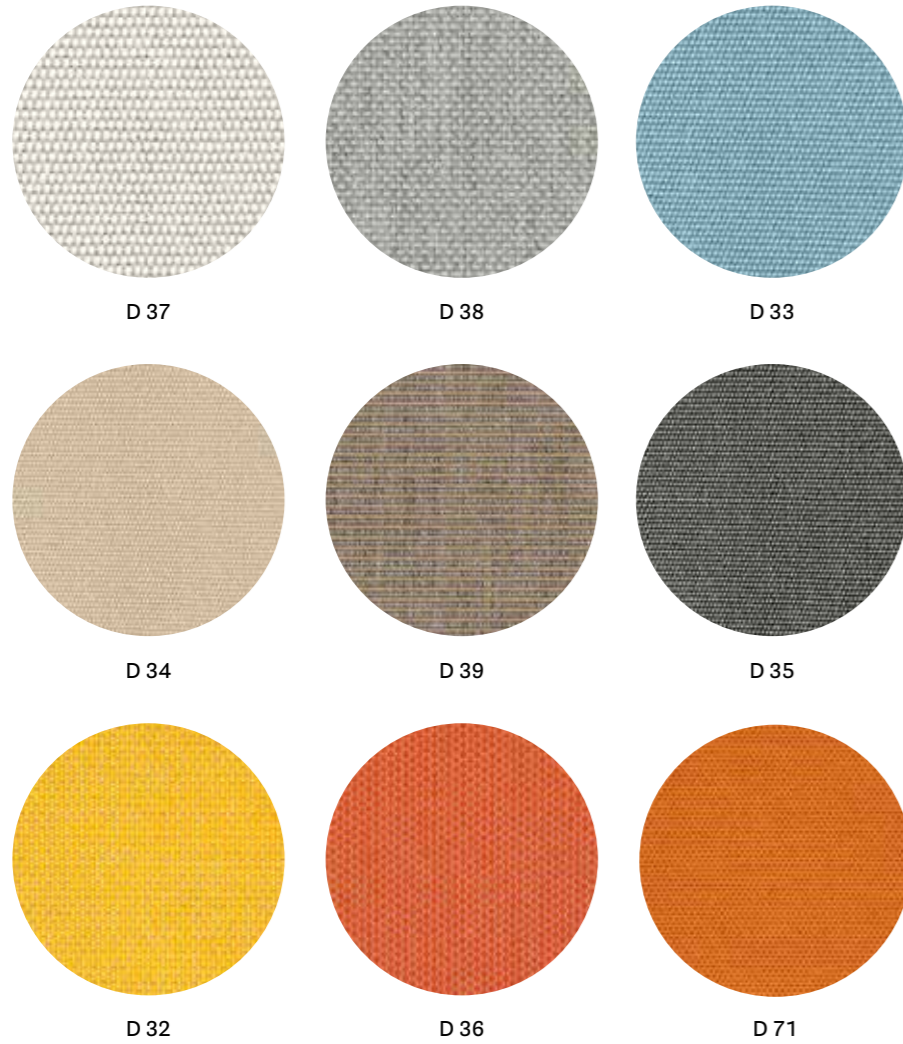
- **COLLECTION / COLLEZIONE**
kvadrat - SUNNIVA
DESIGNERS Raf Simons & Fanny Aronsen
- **COMPOSITION / COMPOSIZIONE**
58% New wool
25% Viscose
8% Linen
5% Nylon
4% Polyester
- **ABRASION / ABRASIONE**
50.000 cycles, Martindale
(EN ISO 12947)

- **RUBBING FASTNESS / SOLIDITÀ ALLO SFREGAMENTO**
N01, N02; N05÷N08:
Dry 4-5 and Wet 3-5, scale 1-5
(ISO 105-X12)
- **PILLING**
3, scale 1-5 (EN ISO 12945)
- **LIGHT FASTNESS / SOLIDITÀ ALLA LUCE**
N01, N04: 4-7, scale 1-8
N01, N02; N05÷N08: 5-7, scale 1-8
(ISO 105-B02)

- **FLAME RESISTANCE / RESISTENZA AL FUOCO**
AS/NZS 3837, class 2
BS 5852 Part 1
BS 5852 Crib 5 with treatment
EN 1021 - 1/2
NFPA 260
US CA TB 117-2013
for N01, N02; N05÷N08:
IMO FTP Code 2010:
Part 8 with treatment
for N01, N04:
DIN 4102 B2

- **APPROVED / OMOLOGATO**





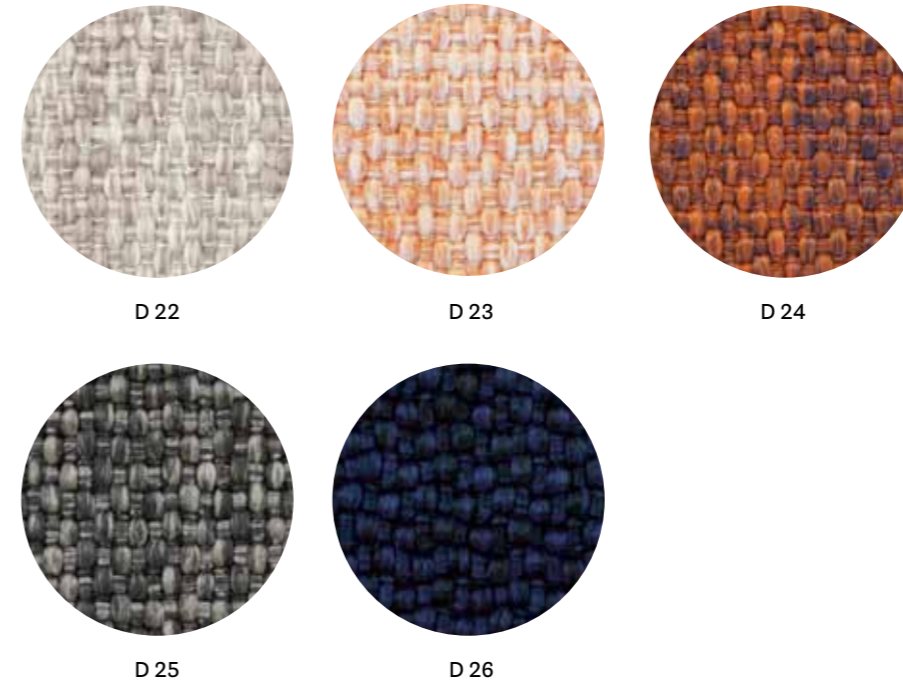
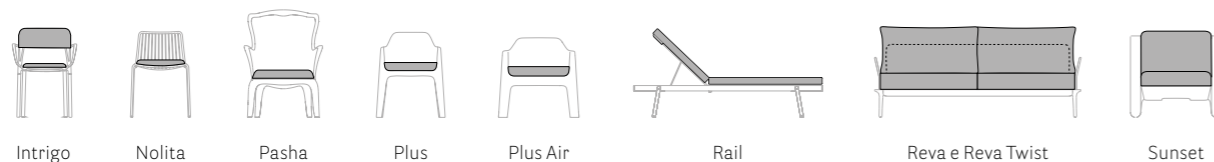
technical specifications / specifiche tecniche



- COMPOSITION / COMPOSIZIONE
100% Acrylic teflon
- ABRASION / ABRASIONE
10.000 cycles, Martindale (EN ISO 12947)
- LIGHT FASTNESS / SOLIDITÀ ALLA LUCE
7-8, scale 1-8 (EN ISO 105-B02)

for cushions only for collections / solo per cuscino delle collezioni

Only for Nolita cushions: rim available in colours D34, D35 and D36 / Solo per cuscino Nolita: disponibile con bordino in diversi colori D34, D35 e D36

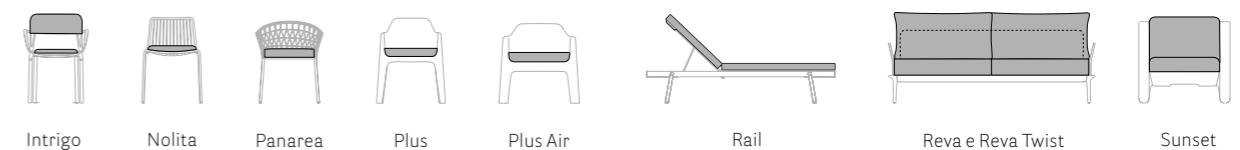


technical specifications / specifiche tecniche



- COLLECTION / COLLEZIONE
BREZZA
- COMPOSITION / COMPOSIZIONE
100% Polypropylene
- ABRASION / ABRASIONE
> 30.000 cycles, Martindale (EN ISO 12947-2)
- RUBBING FASTNESS / SOLIDITÀ ALLO SFREGAMENTO
Dry and Wet 4-5, scale 1-5 (UNI EN ISO 105-X12)
- PILLING
5, scale 1-5 (ISO 12945-2 to 5.000 cycles)
- LIGHT FASTNESS / SOLIDITÀ ALLA LUCE
7, scale 1-8 (EN ISO 105-B02)
- WATER FASTNESS / SOLIDITÀ ALL'ACQUA
5, scale 1-5 (EN ISO 105-E01)
- FLAME RESISTANCE / RESISTENZA AL FUOCO
US CA TB 117-2013

for cushions only for collections / solo per cuscino delle collezioni



Simil Leather

Finta Pelle

CATEGORY A / CATEGORIA A

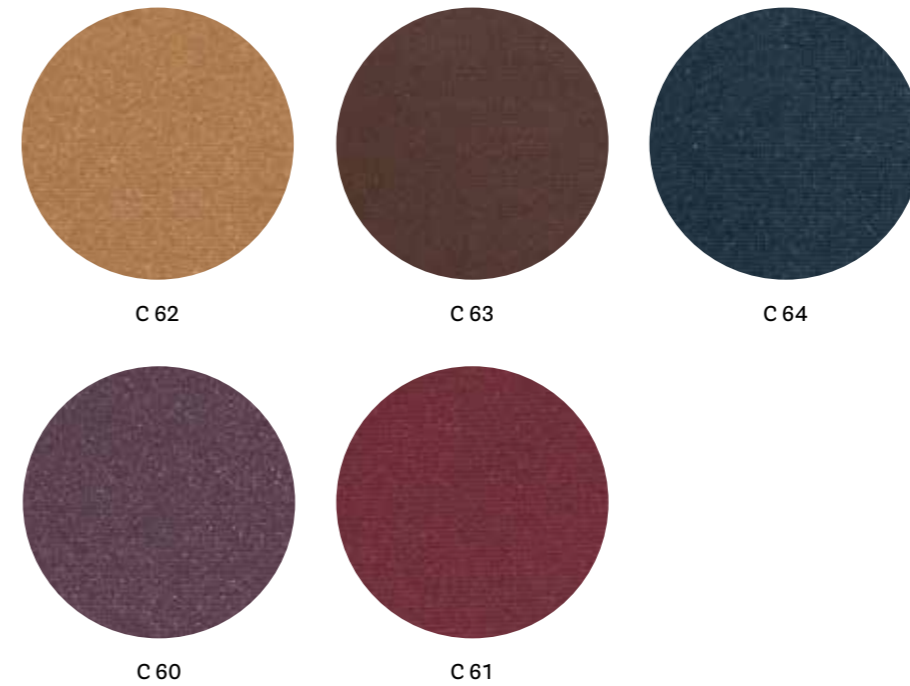


technical specifications / specifiche tecniche



- **COMPOSITION / COMPOSIZIONE**
85% PVC
15% Polyurethane
- **ABRASION / ABRASIONE**
50.000 cycles, Martindale
(UNI EN ISO 12947-2)
- **RUBBING FASTNESS**
SOLIDITÀ ALLO SFREGAMENTO
Dry and Wet 4-5, scale 1-5
(UNI EN ISO 105-X12)
- **LIGHT FASTNESS**
SOLIDITÀ ALLA LUCE
6, scale 1-8
(UNI EN ISO 105-B02)

CATEGORY C / CATEGORIA C

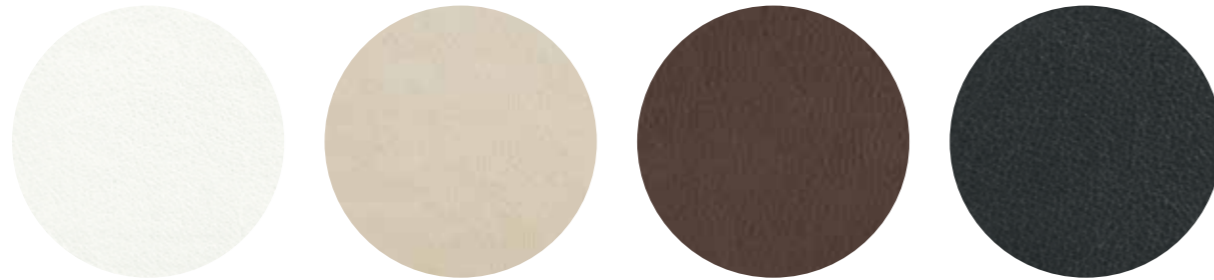


technical specifications / specifiche tecniche



- **Metallic effect simil-leather**
Finta pelle effetto metallizzato
- **COMPOSITION / COMPOSIZIONE**
72% PVC
25% Cotton
3% Polyurethane
- **ABRASION / ABRASIONE**
50.000 cycles, Martindale
(EN ISO 5470-2)
- **RUBBING FASTNESS / SOLIDITÀ ALLO SFREGAMENTO**
Dry and Wet 4-5, scale 1-5
(UNI EN ISO 105-X12)
- **LIGHT FASTNESS / SOLIDITÀ ALLA LUCE**
6, scale 1-8 (UNI EN ISO 105-B02)
- **FLAME RESISTANCE / RESISTENZA AL FUOCO**
BS 5852-1 Part 1
EN 1021-2
IMO RESOLUTION A.652 (16): 1989
UNI 9175 Classe 1 IM
US CA TB 117-2013

CATEGORY C / CATEGORIA C

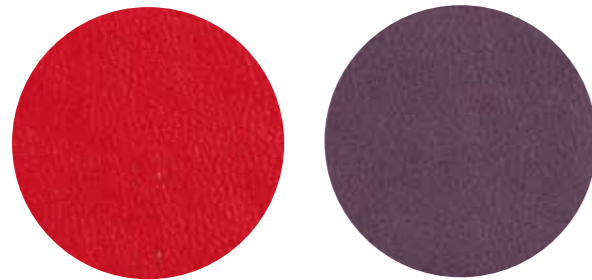


C 90

C 94

C 95

C 93



C 92

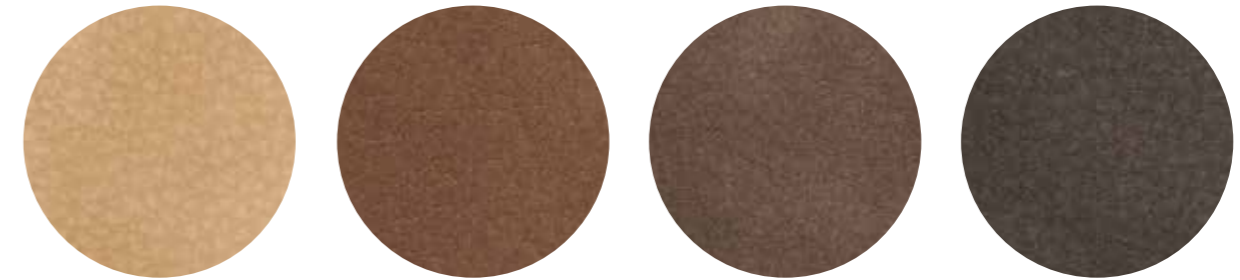
C 91

technical specifications / specifiche tecniche



- **COMPOSITION / COMPOSIZIONE**
72% PVC
25% Cotton
3% Polyurethane
- **ABRASION / ABRASIONE**
50.000 cycles, Martindale
(EN ISO 5470-2)
- **RUBBING FASTNESS / SOLIDITÀ ALLO SFREGAMENTO**
Dry and Wet 4-5, scale 1-5
(UNI EN ISO 105-X12)
- **LIGHT FASTNESS / SOLIDITÀ ALLA LUCE**
6, scale 1-8 (UNI EN ISO 105-B02)
- **FLAME RESISTANCE / RESISTENZA AL FUOCO**
BS 5852-1 Part 1
EN 1021-2
IMO RESOLUTION A.652 (16): 1989
UNI 9175 Classe 1 IM
US CA TB 117-2013

CATEGORY C / CATEGORIA C



C 45

C 46

C 47

C 48

technical specifications / specifiche tecniche



- **COMPOSITION / COMPOSIZIONE**
80% PVC
18% PES
2% Polyurethane
- **Simil-leather non-homogenous shade (vintage effect) / Finta pelle in tonalità non omogenea (effetto vintage)**
- **ABRASION / ABRASIONE**
50.000 cycles, Martindale
(EN ISO 5470-2)
- **RUBBING FASTNESS / SOLIDITÀ ALLO SFREGAMENTO**
Dry and Wet 4-5, scale 1-5
(UNI EN ISO 105-X12)
- **FLAME RESISTANCE / RESISTENZA AL FUOCO**
BS 5852 Part 1 0,1
EN 1021-1&2
UNI 9175 Classe 1 IM



technical specifications / specifiche tecniche



- **COMPOSITION / COMPOSIZIONE**
76% PVC
22% PES
2% Polyurethane
- **ABRASION / ABRASIONE**
60.000 cycles, Martindale
(ISO 5470-2)
- **RUBBING FASTNESS / SOLIDITÀ ALLO SFREGAMENTO**
Dry and Wet 4-5, scale 1-5
(ISO 105-X12)
- **LIGHT FASTNESS / SOLIDITÀ ALLA LUCE**
6, scale 1-8 (ISO 105-B02)
- **FLAME RESISTANCE / RESISTENZA AL FUOCO**
BS 5852-1 match test
EN 1021 Part 1-2
UNI 9175 Classe 1 IM
US CA TB 117-2013



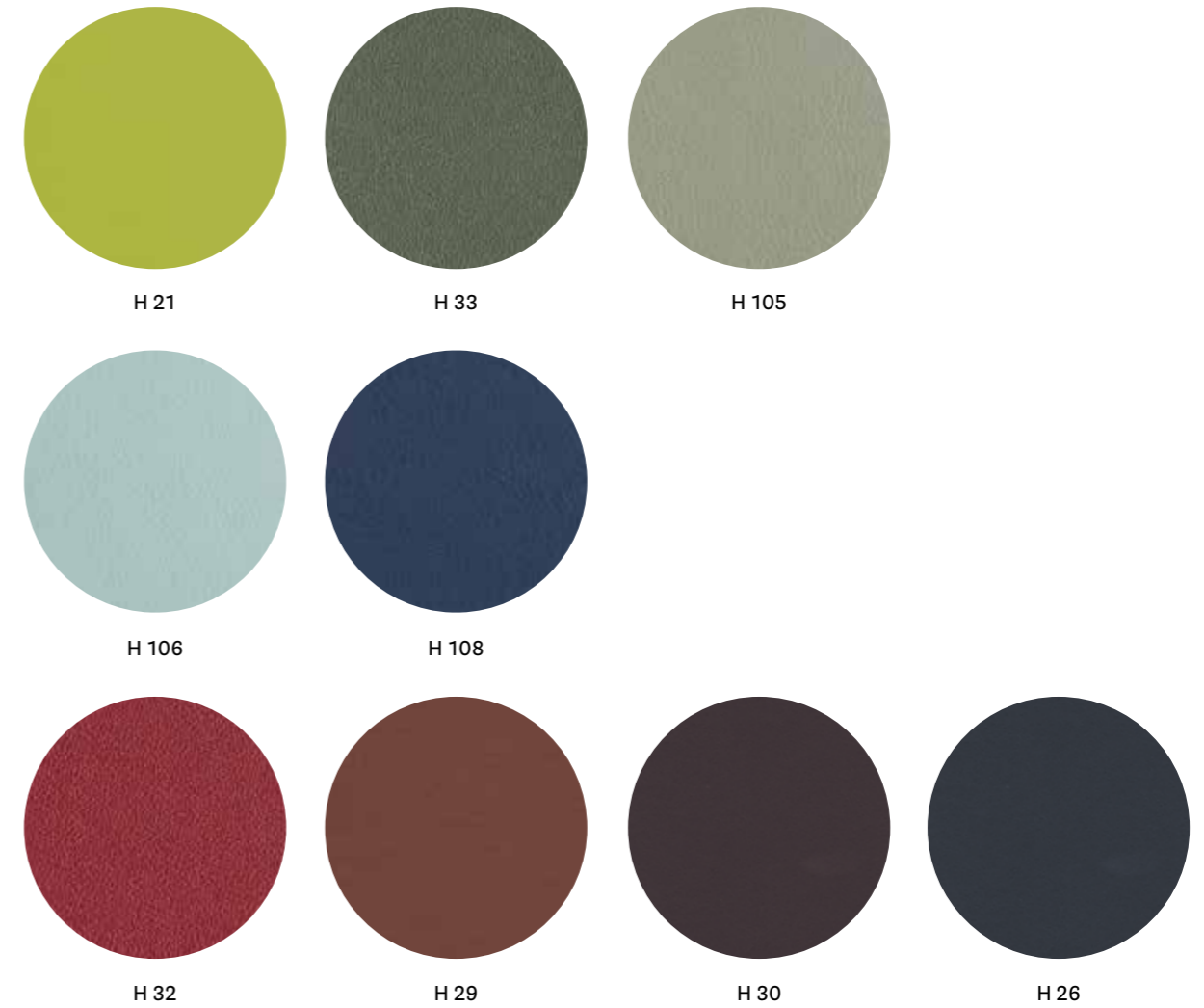
technical specifications / specifiche tecniche



- **COMPOSITION / COMPOSIZIONE**
85% PVC
15% Cotton
- **ABRASION / ABRASIONE**
150.000 cycles, Martindale
(ISO 5470-2)
- **LIGHT FASTNESS / SOLIDITÀ ALLA LUCE**
≥6, scale 1-8 (EN ISO 105-B02)
- **FLAME RESISTANCE / RESISTENZA AL FUOCO**
B2 (DIN 4102)
BS 5852 Crib 5
EN 1021.1-2
EN 13501-1 - Cs3do
FAR 25853 App F Part 1
- **IMO RESOLUTION A.652**
NF D60-013 - AM 18
NFP 92503 M1
NY/NJ - Port Authority
UFAC Fabric Class 1
German fire standard B1 (except C12 and C22)
US CATB 117
US CATB 133

- **APPROVED / OMOLOGATO**





technical specifications / specifiche tecniche



- COMPOSITION / COMPOSIZIONE
63% Polyurethane
29% Cotton
8% PES
- ABRASION / ABRASIONE
150.000 cycles, Martindale
(UNI EN ISO 12947-2)

- LIGHT FASTNESS / SOLIDITÀ ALLA LUCE
5-6, scale 1-8 (UNI EN ISO 105-B02)
- FLAME RESISTANCE / RESISTENZA AL FUOCO
BS 5852 Crib 5
BS 5852 Part 1-2
EN 1021 Part 1-2
IMO resolution FTP Code 2010

IMO resolution A.652 (16):1989
UNI 9175 Classe 1 IM
US CA TB 117-2013



H 80



H 82



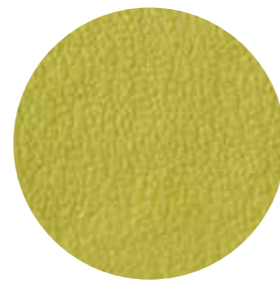
H 88



H 85



H 87



H 89

technical specifications / specifiche tecniche



- **Metallic effect simil-leather**
Finta pelle effetto metallizzato
- **COMPOSITION / COMPOSIZIONE**
63% Polyurethane
29% Cotton
8% PES

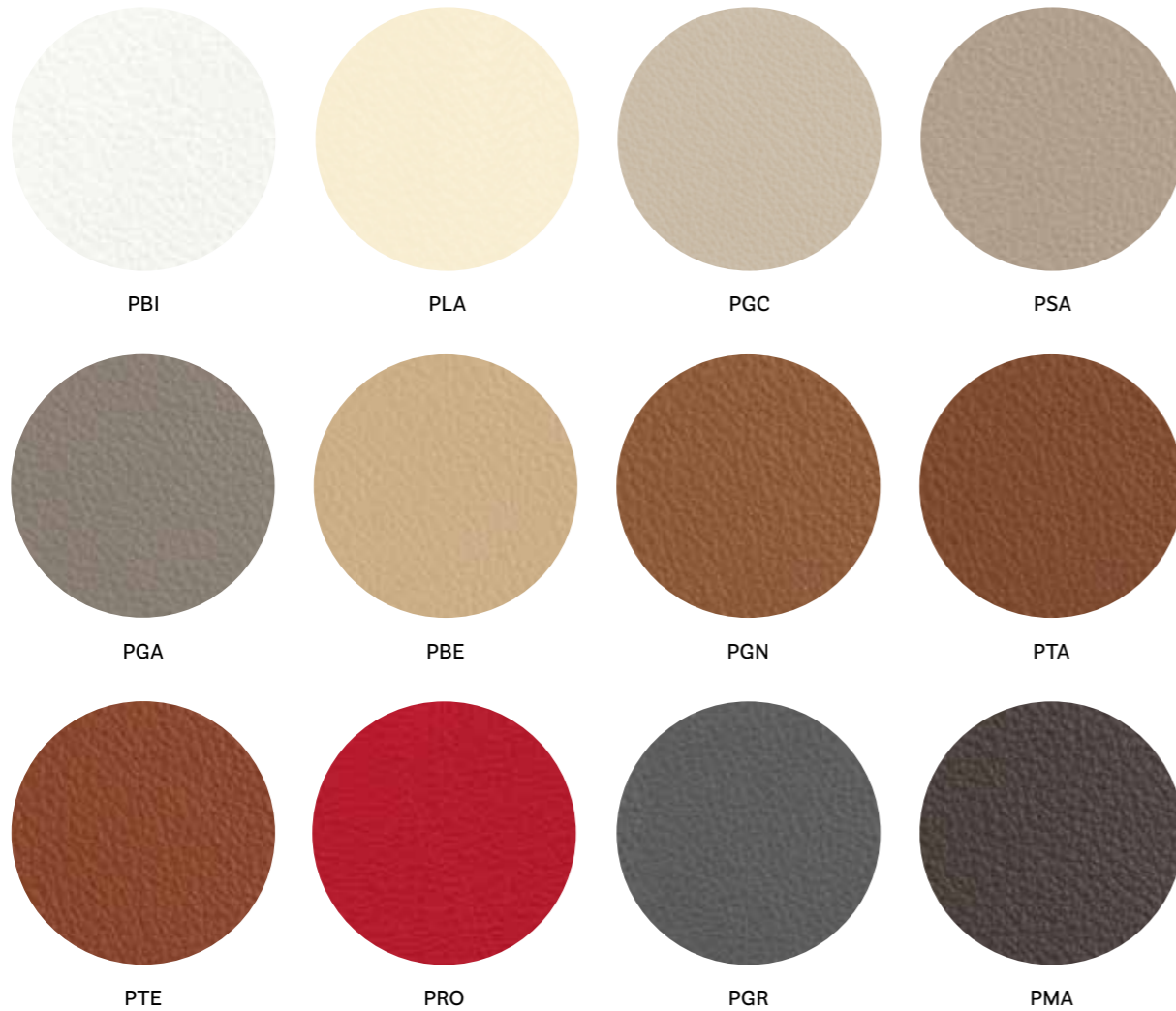
- **ABRASION / ABRASIONE**
50.000 cycles, Martindale
(EN ISO 5470-2)
- **LIGHT FASTNESS / SOLIDITÀ ALLA LUCE**
5-6, scale 1-6 (EN ISO 105-B02)
- **FLAME RESISTANCE / RESISTENZA AL FUOCO**
BS 5852-1 cigarette test

- **BS 5852-1 match test**
BS 5852 crib 5
EN 1021-1
EN 1021-2
IMO FTP CODE 2010
TB 117:2013
UNI 9175 classe 1IM

Leather

Pelle

CATEGORY P / CATEGORIA P



technical specifications / specifiche tecniche

- COLLECTION / COLLEZIONE

LINEA
- COMPOSITION / COMPOSIZIONE
Mid grain leather
 Pelle mezzo fiore
- RUBBING FASTNESS / SOLIDITÀ ALLO SFREGAMENTO
Dry (500 Cycles) and Wet (250 Cycles) ≥4
 (UNI EN ISO 11640:1998)

- LIGHT FASTNESS / SOLIDITÀ ALLA LUCE
≥5 (UNI EN ISO 105 B02) (MET.5)
- FLAME RESISTANCE / RESISTENZA AL FUOCO
BS 5852:1979
BS EN 1021-1-2:2006
IMO RES A652 (16)

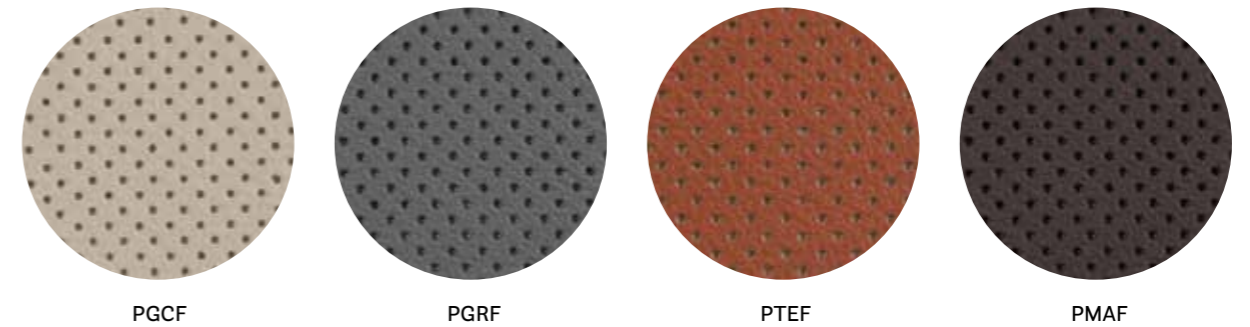
cleaning / lavaggio

Clean with a damp cloth using water. Do not use detergents, solvents, bleached, abrasives.
 Pulire con un panno umido d'acqua. Non usare detersivi, solventi, candeggianti, abrasivi.

- APPROVED / OMOLOGATO



CATEGORY P / CATEGORIA P



technical specifications / specifiche tecniche

- COLLECTION / COLLEZIONE

LINEA
- COMPOSITION / COMPOSIZIONE
Perforated mid grain leather
 Pelle mezzo fiore traforata
- RUBBING FASTNESS / SOLIDITÀ ALLO SFREGAMENTO
Dry (500 Cycles) and Wet (250 Cycles) ≥4
 (UNI EN ISO 11640:1998)

- LIGHT FASTNESS / SOLIDITÀ ALLA LUCE
≥5 (UNI EN ISO 105 B02) (MET.5)
- FLAME RESISTANCE / RESISTENZA AL FUOCO
BS 5852:1979
BS EN 1021-1-2:2006
IMO RES A652 (16)

cleaning / lavaggio

Clean with a damp cloth using water. Do not use detergents, solvents, bleached, abrasives.
 Pulire con un panno umido d'acqua. Non usare detersivi, solventi, candeggianti, abrasivi.

- APPROVED / OMOLOGATO



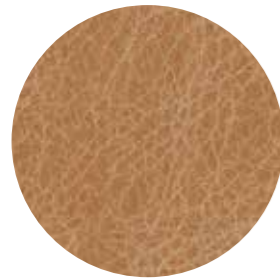
only for collections / solo per collezioni



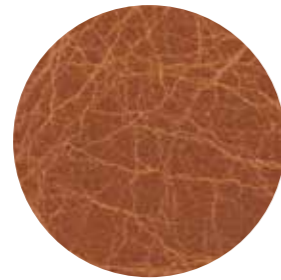
Inner part of the back, upper part of the seat.
 Lato interno dello schienale e parte superiore del sedile.

Vic / Vic Metal

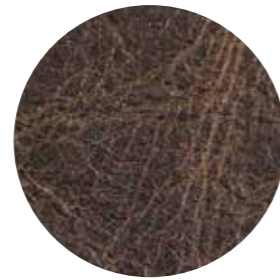
CATEGORY P / CATEGORIA P



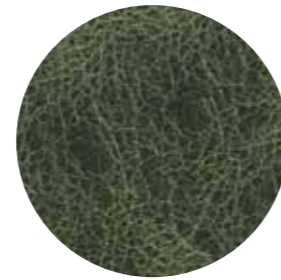
PBS



PCO



PMS



PVE

technical specifications / specifiche tecniche

• COLLECTION / COLLEZIONE



TUSCANIA

• COMPOSITION / COMPOSIZIONE

Vintage mid grain leather

Pelle mezzo fiore anticata

• **Leather non-homogenous shade (vintage effect)**

Pelle in tonalità non omogenea (effetto vintage)

• RUBBING FASTNESS / SOLIDITÀ ALLO SFREGAMENTO

Dry (50 Cycles) and Wet (20 Cycles) ≥ 3
(EN ISO 11640:1998)

• LIGHT FASTNESS / SOLIDITÀ ALLA LUCE

$\geq 2/3$ (UNI EN ISO 105-B02) (MET.5)

• FLAME RESISTANCE / RESISTENZA AL FUOCO

BS 5852:1979
BS EN 1021-1-2:2006

cleaning / lavaggio

Clean with warm and damp cloth. Do not use detergents, solvents, bleached, abrasives.

Pulire con acqua calda e un panno umido. Non usare detersivi, solventi, candeggianti, abrasivi.

only for collections / solo per collezioni



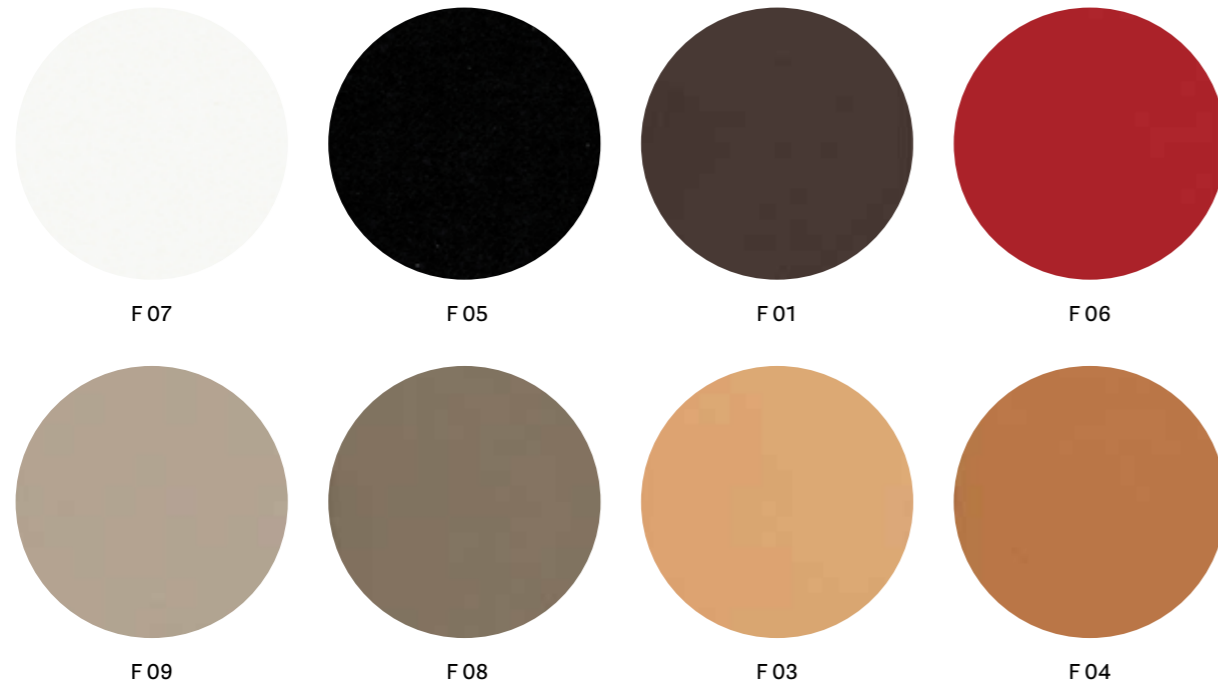
Malmö

Inga

Hard leather

Cuoio

CATEGORY F / CATEGORIA F



technical specifications / specifiche tecniche

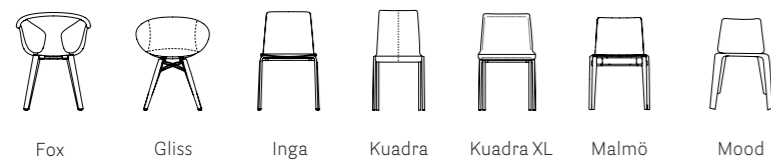
• **COMPOSITION / COMPOSIZIONE**
Genuine hard leather, tanned with vegetable substances.
 Cuoio naturale, conciato con sostanze vegetali.

• **RUBBING FASTNESS / SOLIDITÀ ALLO SFREGAMENTO**
Satisfactory up to maximum 700 abrasions in humid environment and 1000 abrasions in dry environment.
 Soddisfacente sino a max 700 abrasioni all'umido e 1000 abrasioni al secco.

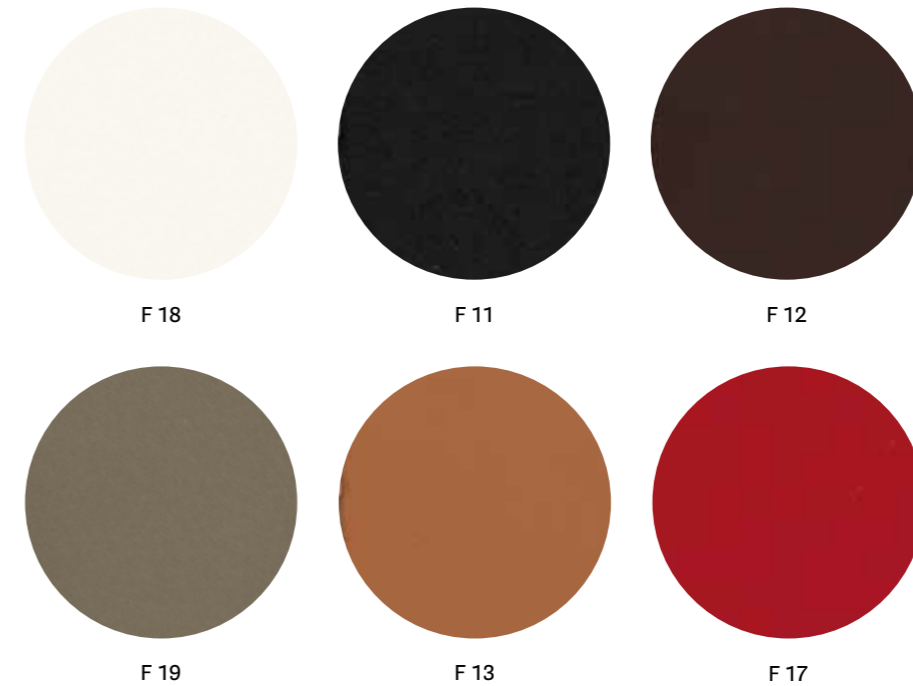
cleaning / lavaggio

Clean with a damp cloth using water.
 Pulire con un panno umido d'acqua.

only for collections / solo per collezioni



CATEGORY F / CATEGORIA F



technical specifications / specifiche tecniche

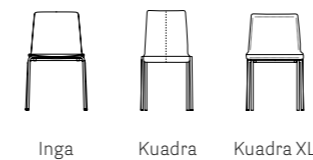
• **COMPOSITION / COMPOSIZIONE**
Regenerated hard leather. Tanned leather cuttings and shavings linked with natural rubber latex.
 Cuoio rigenerato. Ritagli e rasatura di cuoio conciato legati con lattice di gomma naturale.

• **RUBBING FASTNESS / SOLIDITÀ ALLO SFREGAMENTO**
Dry and wet >1000 (UNI EN ISO 11640)
 • **LIGHT FASTNESS / SOLIDITÀ ALLA LUCE**
4-5 Xenotest Method
 • **FLAME RESISTANCE / RESISTENZA AL FUOCO**
BS EN 1021 1&2
BS 5852 Part 1
US CA TB 117 E Part 1

cleaning / lavaggio

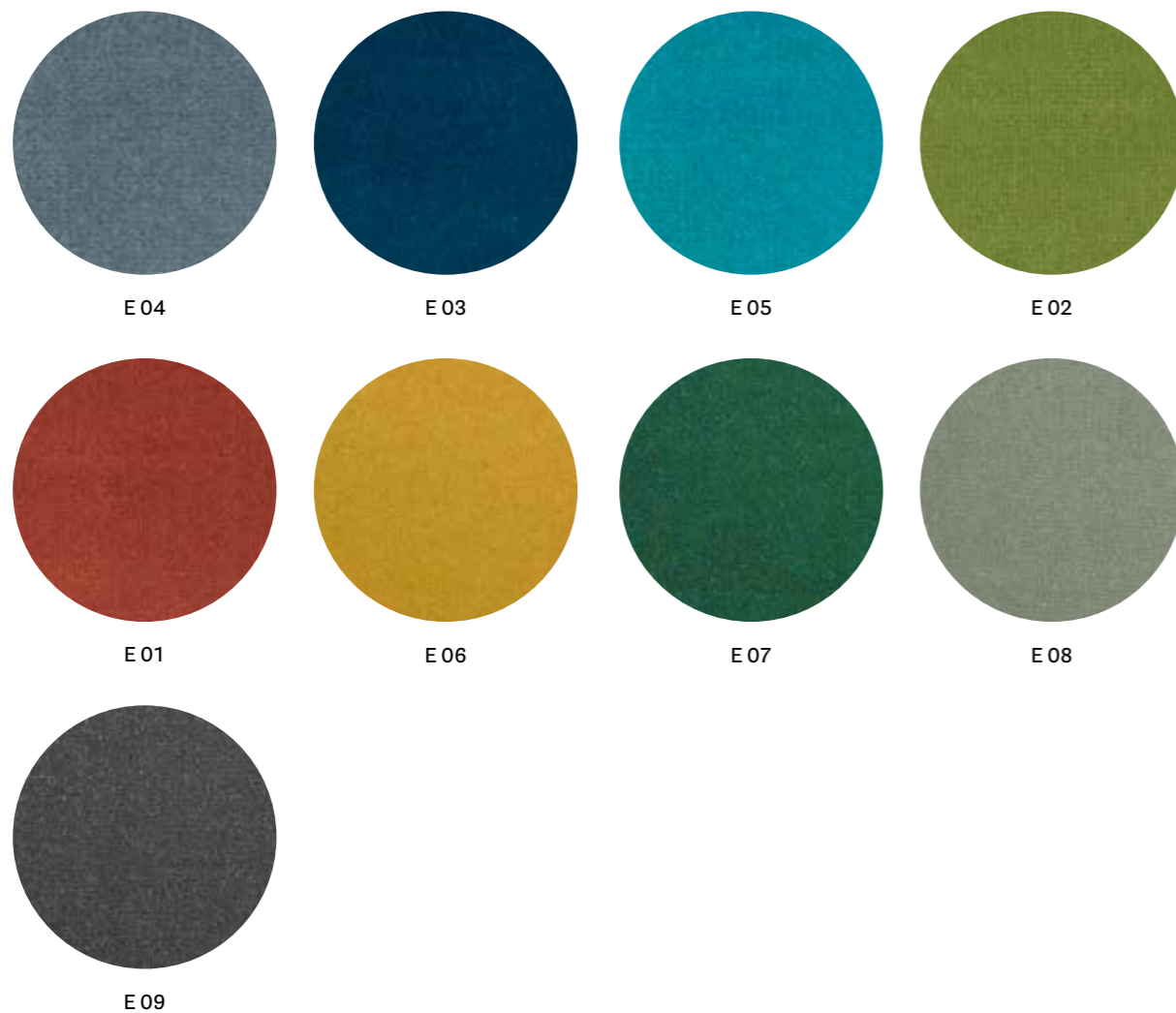
Clean with a damp cloth using water.
 Pulire con un panno umido d'acqua.

only for collections / solo per collezioni

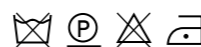


Velvet
Velluto

CATEGORY E / CATEGORIA E



technical specifications / specifiche tecniche

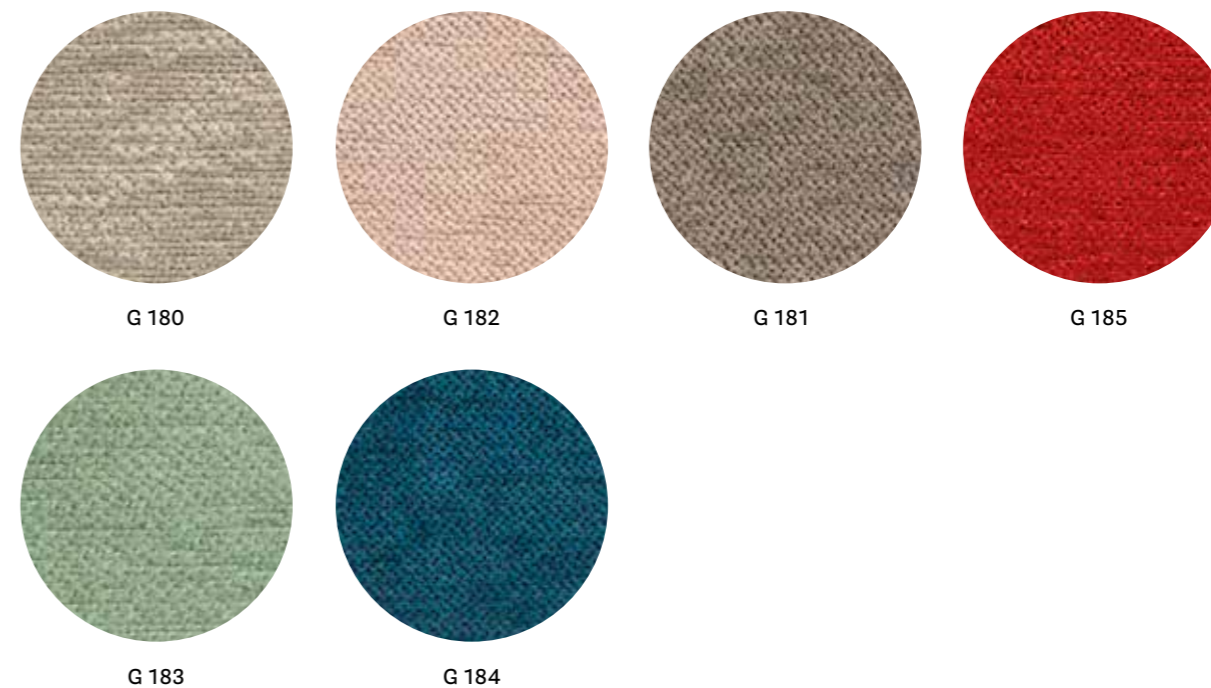


- COLLECTION / COLLEZIONE
DEDAR
by
ADAMO & EVA
- COMPOSITION / COMPOSIZIONE
100% Cotton

- ABRASION / ABRASIONE
50.000 cycles, Martindale (ISO 12947-2)
- RUBBING FASTNESS / SOLIDITÀ ALLO SFREGAMENTO
Dry 4-5 and Wet 3-5, scale 1-5
(ISO 105-X12)

- LIGHT FASTNESS / SOLIDITÀ ALLA LUCE
4-6, scale 1-8 (ISO 105-B02)

CATEGORY G / CATEGORIA G



technical specifications / specifiche tecniche



- COLLECTION / COLLEZIONE
kvadrat - STILL
DESIGNER Georgina Wright
- COMPOSITION / COMPOSIZIONE
100% TREVIRA CS®
- ABRASION / ABRASIONE
50.000 cycles, Martindale
(EN ISO 12947)
- RUBBING FASTNESS / SOLIDITÀ ALLO SFREGAMENTO
Dry and Wet 4-5, scale 1-5
(EN ISO 105-X12)

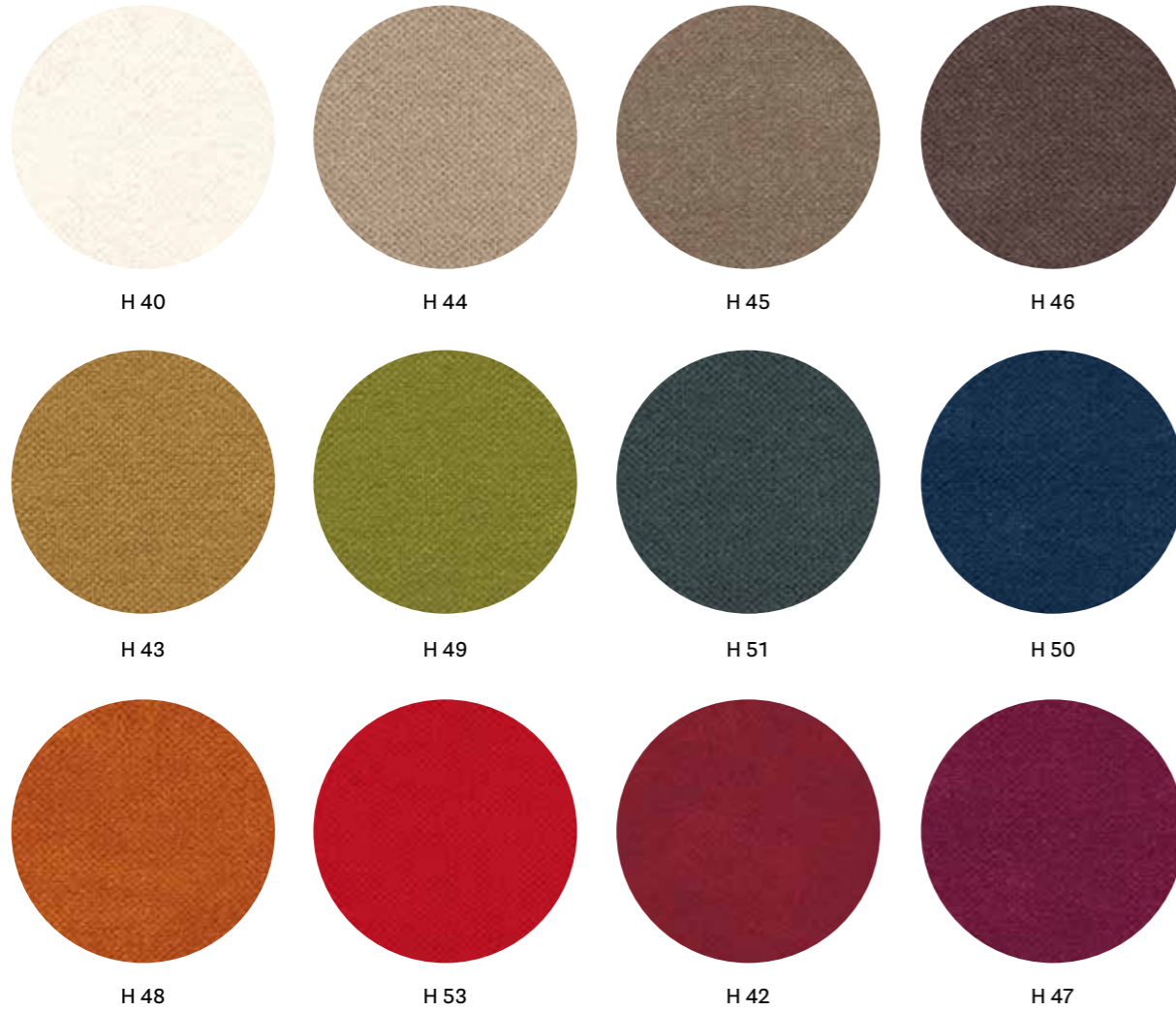
- PILLING
4-5, scale 1-5 (EN ISO 12945)
- LIGHT FASTNESS / SOLIDITÀ ALLA LUCE
5-7, scale 1-8 (ISO 105-B02:2014)
- SOUND ABSORPTION / ASSORBIMENTO ACUSTICO
folded: $\alpha_w = 0.85$ Class B (ISO 11654)
- FLAME RESISTANCE / RESISTENZA AL FUOCO
ASTM E84 class A
BS 5852 Crib 5
BS 5852 Part 1
BS 5867 Part 2 type B

- DIN 4102 B1
EN 1021-1/2
EN 13501-1, B-S1, d0
IMO FTP Code 2010:Part 8
NF D60-013
NF P92 57 M1
NFPA 701
ÖNORM B1/Q1
SN 198 898 5.2
UNI 9175 Classe 1 IM
UNI 9177 Classe 1
US CA TB 117-2013

- APPROVED / OMOLOGATO



CATEGORY H / CATEGORIA H



H 40 H 44 H 45 H 46
H 43 H 49 H 51 H 50
H 48 H 53 H 42 H 47

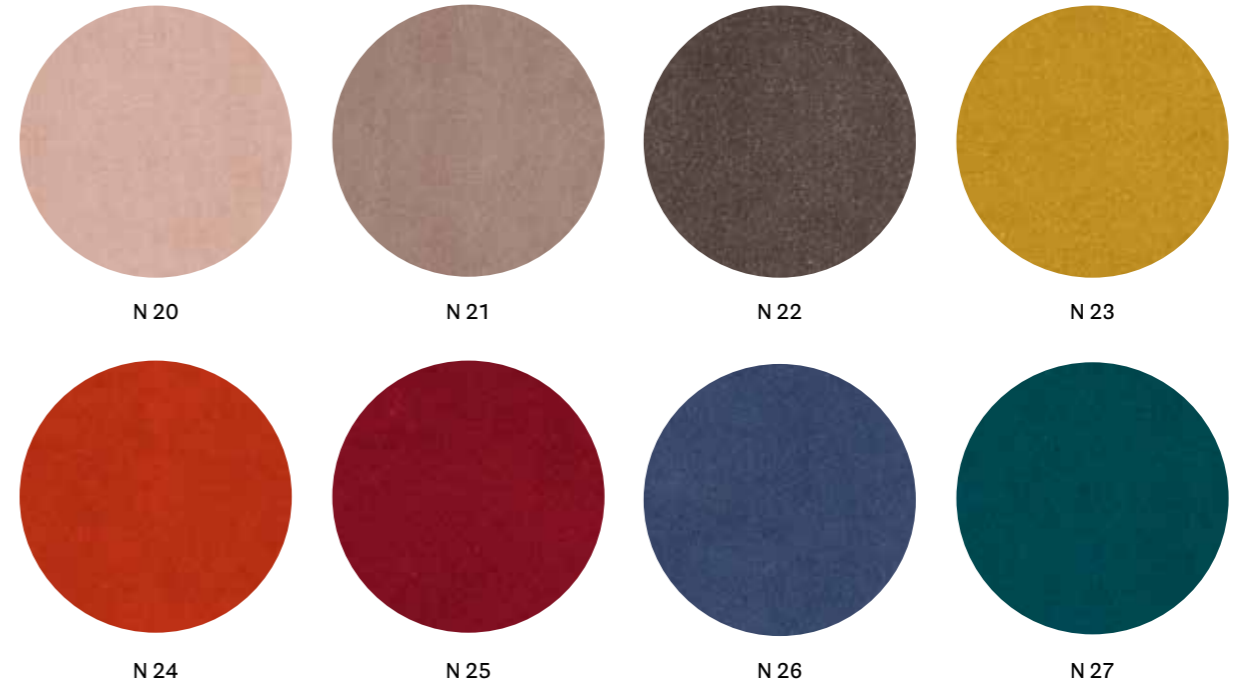
technical specifications / specifiche tecniche



H 41

- COMPOSITION / COMPOSIZIONE
100% TREVIRA CS®
- ABRASION / ABRASIONE
190.000 cycles, Martindale
(EN ISO 12947-2)
- RUBBING FASTNESS / SOLIDITÀ ALLO SFREGAMENTO
Dry and Wet 4-5, scale 1-5
(EN ISO 105-X12)
- PILLING
5, scale 1-5 (EN ISO 12945-2)
- LIGHT FASTNESS / SOLIDITÀ ALLA LUCE
5, scale 1-8 (EN ISO 105-B02)
- SOUND ABSORPTION / ASSORBIMENTO ACUSTICO
folded: $\alpha_w = 0.70$ (EN ISO 354:2003)
- FLAME RESISTANCE / RESISTENZA AL FUOCO
BS 5852 Part 0,1
DIN 4102 B1
EN 1021-1&2
IMO MSC 307(88) Annex 1 Part 7-8
NF P 92-503-507 M1
NFPA 260:2019
UNI 9177 Classe 1
UNI 9175 Classe 1 IM
US CA TB 117-2013

CATEGORY N / CATEGORIA N



N 20 N 21 N 22 N 23
N 24 N 25 N 26 N 27

technical specifications / specifiche tecniche



- COLLECTION / COLLEZIONE
kvadrat-SAHCO
BALBOA
DESIGNER Najberg
- COMPOSITION / COMPOSIZIONE
100% Polyester FR
- ABRASION / ABRASIONE
100.000 cycles, Martindale
(EN ISO 12947)
- RUBBING FASTNESS / SOLIDITÀ ALLO SFREGAMENTO
Dry 5 and Wet 4-5, scale 1-5
(EN ISO 105-X12)
- PILLING
4, scale 1-5
(EN ISO 12945-2)
- LIGHT FASTNESS / SOLIDITÀ ALLA LUCE
4-6, scale 1-8
(EN ISO 105-B02)
- SOUND ABSORPTION / ASSORBIMENTO ACUSTICO
folded: $\alpha_w = 0.80$ Class B
(ISO 11654)
- FLAME RESISTANCE / RESISTENZA AL FUOCO
BS 5852 Crib 5
BS 5867 Part 2 Type B
DIN 4102 B1
EN 1021-1/2
IMO FTP Code 2010: Part 8
NFPA 701
ÖNORM B1/Q1
SN 198 898 5.2
UNI 9175 1IM
US Cal. Bull. 117-2013

APPROVED / OMOLOGATO

