

# Bonsenkitchen

## Coffee Maker Operation Instructions

Model: CM8006



[www.bonsenkitchen.com](http://www.bonsenkitchen.com)



# Contents

IMPORTANT SAFEGUARDS .....	1-2
KNOW YOUR COFFEE MAKER .....	3
CONTROL PANEL .....	3
USING YOUR COFFEE MAKER .....	4
COFFEE-MAKING FUNCTION .....	5-6
CLEANING YOUR COFFEE MAKER .....	6
WARRANTY CLAIM PROCEDURE .....	7
ENVIRONMENT FRIENDLY DISPOSAL .....	7

# IMPORTANT SAFEGUARDS

This appliance is for **HOUSEHOLD USE ONLY**.

**WARNING:** When using electrical appliances especially when children are present, basic safety precautions should always be followed to reduce the risk of fire, electric shock, and/or injury to persons, including the following:

1. Read all instructions before use.
2. Do not touch hot surfaces. Use handles or knobs.
3. To protect against fire, electrical shock, and injury to persons do not immerse cord, plugs, or the appliance in water or other liquids.
4. Close supervision is necessary when any appliance is used by or near children.
5. Unplug from outlet when not in use and before cleaning. Allow to cool before putting on or taking off parts and before cleaning the appliance.
6. Do not operate the appliance with a damaged cord or plug, or after the appliance malfunctions or has been dropped or damaged in any manner. Call our toll-free customer assistance number for information on examination, repair, or adjustment.
7. The use of accessory attachments are not recommended by the appliance manufacturer which may result in fire, electric shock, or injuries to persons.
8. Do not use outdoors or in a damp area.
9. Do not let the cord hang over the edge of table or counter or touch hot surfaces.
10. Do not place on or near hot gas, an electric burner, or in a heated oven.
11. To disconnect the appliance, turn control to off, then remove the plug from the wall outlet.
12. Do not use this appliance for anything other than its intended use.
13. Scalding may occur if the lid is removed during the brewing cycles.
14. To reduce the risk of fire or electric shock, do not remove the bottom cover on the appliance.
15. **Warning:** The Single Serve Coffee Maker is never to be used on a range top.

**Warning:** Hot steam.

**Caution:** To reduce the risk of scalding, do not open the lid when coffee is brewing.

**Warning:** To reduce the risk of fire or electric shock, do not remove the bottom cover. No user-serviceable parts inside. Repair should be done by authorized service representative.

**Warning:** After brewing is finished turn off the appliance.

## **SAVE THESE INSTRUCTIONS**

This appliance is for HOUSEHOLD USE ONLY. It may be plugged into an AC electrical outlet (ordinary household current). Do not use any other electrical outlet.

## **SHORT CORD INSTRUCTIONS**

A short power supply cord is provided to reduce the hazards resulting from entanglement or tripping over a longer cord. Longer detachable power-supply cords or extension cords are available and may be used if care is exercised in their use. If a longer detachable power-supply extension cord is used:

1. The marked electrical rating of the cord set or extension cord should be at least as great as the electrical rating of the appliance, and:
2. The cord should be arranged so that it will not drape over the counter top or tabletop where it can be pulled on by children or tripped over unintentionally.

## **LINE CORD SAFETY TIPS**

1. Never pull or yank on the cord or the appliance.
2. To insert the plug, grasp it firmly and guide it into outlet.
3. To disconnect the appliance, grasp the plug and remove it from the outlet.
4. Before each use, inspect the line cord for cuts and/or abrasion marks. If any are found, this indicates that the appliance should be serviced, and the line cord replaced. Please return it to an authorized service representative.
5. Never wrap the cord tightly around the appliance, as this could place undue stress on the cord where it enters the appliance and cause it to fray and break.

## **DO NOT OPERATE THE APPLIANCE IF THE LINE CORD SHOWS ANY DAMAGE, OR IF THE APPLIANCE WORKS INTERMITTENTLY, OR STOPS WORKING ENTIRELY.**

This appliance must be grounded while in use.

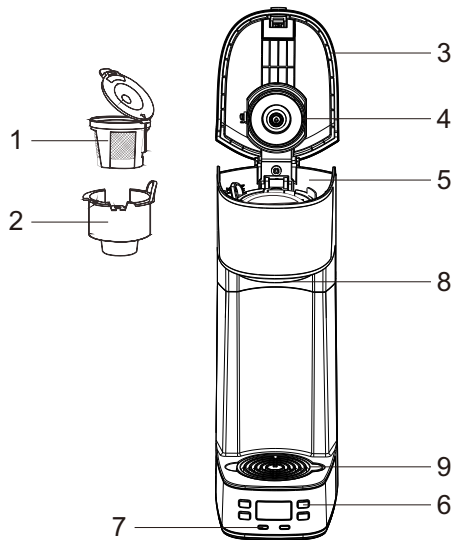
**CAUTION:** To ensure continued protection against risk of electric shock, connect to properly grounded outlets only.

**IMPORTANT:** During the first few minutes of initial use, you may notice smoke and/or a slight odor. This is normal and should quickly disappear. It will not recur after the appliance has been used a few more times.

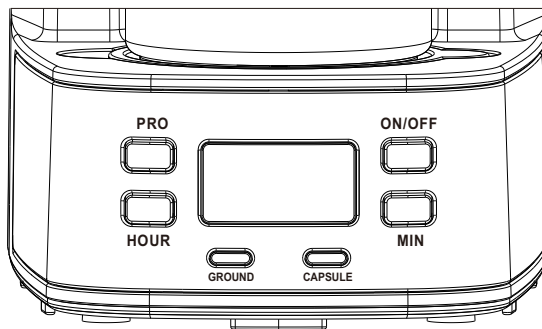
This appliance is not intended for use by persons (including children) with reduced physical, sensory or mental capabilities, or lack of experience and knowledge, unless they have been given supervision or instruction concerning use of the appliance by a person responsible for their safety.

# KNOW YOUR COFFEE MAKER

1. Coffee grounds filter
2. Capsule receptacle for both K-Cups and coffee ground filter
3. Lid
4. Water shower head
5. Water tank
6. Brew buttons
7. Indicator light
8. Spout
9. Rubber drip tray

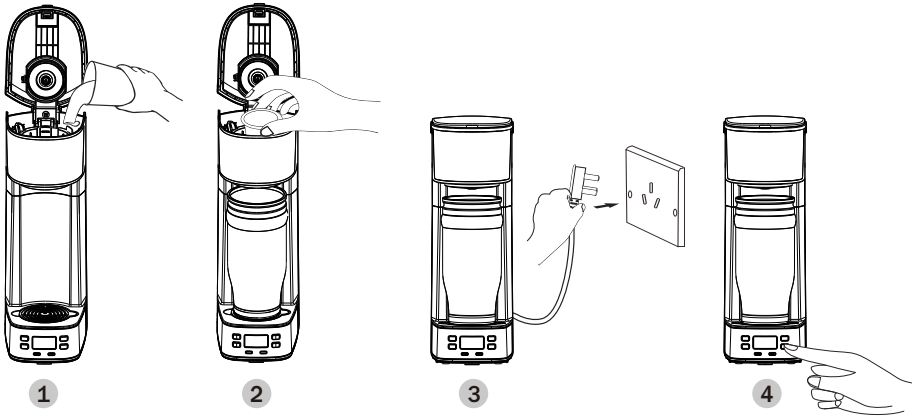


## CONTROL PANEL



# USING YOUR COFFEE MAKER

Remove packing materials and read all instructions carefully before use. Before first use, run the machine with water and no coffee to ensure the unit is clean. Do not immerse the unit in water.



**STEP 1:** Place K-Cup or provided permanent coffee ground filter\* into receptacle.

**STEP 2:** Add water to tank located behind capsule receptacle and the underwater shower head, and close lid until you hear a clicking sound.

**STEP 3:** Connect the unit to a power supply.

**IMPORTANT:** Do not plug in this unit before water is added to the tank.

**STEP 4:** Firmly press the “BREW” button and enjoy!

\*Fill provided coffee ground filter with ground coffee and close until it clicks. Place filter into the receptacle by aligning the "front" of the filter and the receptacle facing the user. No filters may be used other than the one provided because they may cause injury to persons and damage to the unit.

**Note:** The Indicator light will turn on when the coffee maker is plugged in. The indicator light will blink when brewing.

**CAUTION:** To avoid potential scalding, do not open the lid while unit is in operation. We recommend not keeping your unit plugged in overnight or for long periods of time.

# COFFEE-MAKING FUNCTION

## 1. Time Setting

- A. Plug in the machine you could see the default time figure is 12:00 AM. The “12:00 AM” will flash for 5 times then stop, and the clock begins to run.
- B. You could press “HOUR” or “MIN” to set the clock time according to your time zone. If you press the “HOUR” or “MIN” once a time, the time will change correspondingly. If you keep pressing “HOUR” or “MIN” for more than 0.6 seconds, the time figure will speed up changing.
- C. If no operation in 5 seconds, the figure of time will stop flashing and the clock begins to run.
- D. If you want to change the time you set before, please feel assured that it is feasible to reset it whenever the time figure is flashing or is already set.

## 2. Normal Brew Mode

- A. Plug in the machine.
- B. Press “PRO” once a time to choose the GROUND or CAPSULE functions (The default function is GROUND)
- C. Press “ON/OFF” to start to brew coffee.

**Note:** Whenever you have set coffee-brewing appointment or not, it is also feasible to press ON/OFF to brew coffee directly.

## 3. Delay Brew Mode

- A. Press the “PRO” button once a time to choose the GROUND or CAPSULE functions (The default function is GROUND)
- B. Keep pressing the “PRO” button for nearly 2 seconds, the machine enters the Delay Brew Mode as the LCD “PRO” indicator will light up and the figure of time will flash. At this time, it is feasible to press “HOUR” or “MIN” to set the time and press “PRO” again to confirm the time you want to brew coffee. And the machine will enter the Delay Brew Mode.
- C. If the LCD “PRO” indicator keeps light on and the time figure returns to the current time, the appointment of brewing coffee is pre-set successfully. To keep pressing the “PRO” for 2 seconds, you could check or reset the appointment time.
- D. If you want to cancel the appointment, please press the “PRO” twice, then the “PRO” light will turn off.



**Note:** When you are setting the appointment time, if no operation for 5 seconds when the “PRO” lights on and the time figure flashing, the machine will exit the Delay Brew Mode automatically and the time figure will return to the current time and the LCD “PRO” indicator will turn off.

Please note that the time should be reset again if you plug out the machine.

## CLEANING YOUR COFFEE MAKER

Proper maintenance will ensure years of service from your appliance. Clean the appliance after every use. This appliance contains no user serviceable parts and requires little maintenance.

**Warning:** Unplug the appliance and let it cool down completely before cleaning.

**Caution:** Do not immerse the coffee maker, or the power cord with the plug into water or any liquids. Do not use abrasive pads or alcohol.

- Take out the permanent filter and receptacle from the coffee machine.
- Clean the housing with a clean, damp cloth.
- Use baking soda or a mild cleaning agent to remove stains in the receptacle. If stains are hard to remove, soak the receptacle overnight with a water/detergent mixture and clean afterwards.
- Make sure all parts are completely dry after washing and before use.
- After cleaning, reassemble the coffee maker.

**Note:** Do not dry the inside of the water tank with a cloth, as lint may remain.

## WARRANTY CLAIM PROCEDURE

To ensure quick processing of your case, please observe the following instructions: Please have the till receipt and the item number (S/N: 12345) available as proof of purchase.

You will find the item number as a sticker on the rear or bottom of the appliance. If malfunctions or other defects occur, please contact our customer service listed either by telephone or by email.

If you request any further assistance, please contact us:

Customer service: **1-888-965-8032**

[support@bonsenkitchen.com](mailto:support@bonsenkitchen.com)

## ENVIRONMENT FRIENDLY DISPOSAL

This product must not be disposed together with the domestic waste. This product has to be disposed at an authorized place for recycling of electrical and electronic appliances. By collecting and recycling waste, you help save natural resources, and make sure the product is disposed in an environmental friendly and health way.



Register your product at **[www.bonsenkitchen.com](http://www.bonsenkitchen.com)**  
to get more perks!



Follow us @bonsenkitchen

**Bonsen Electronics Inc.**

📍 : 5805C Peachtree Corners East  
Norcross, GA, 30092

☎ : 1-888-965-8032

✉ : [support@bonsenkitchen.com](mailto:support@bonsenkitchen.com)