

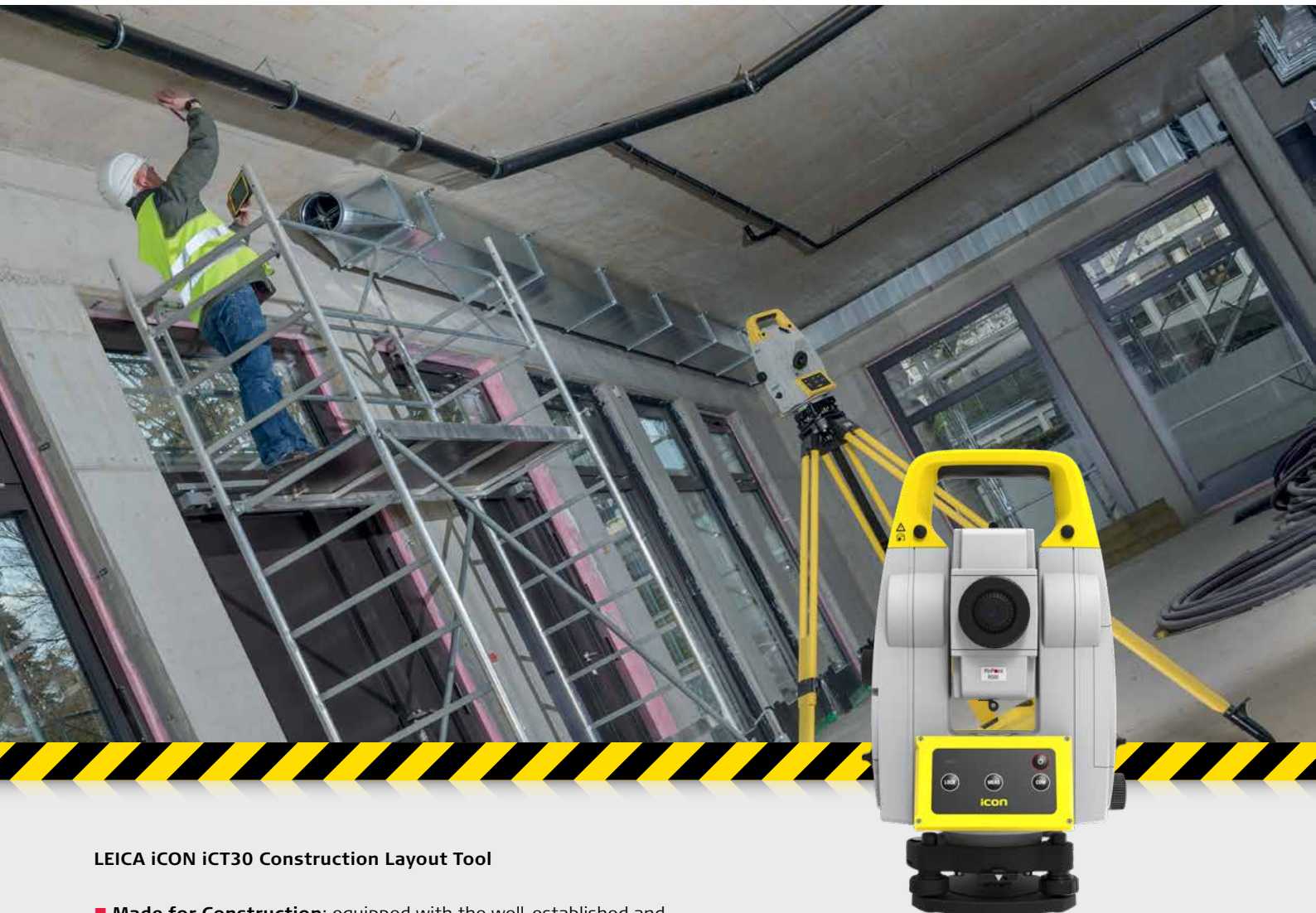
LES



Levelling
Equipment
Services

Leica iCON iCT30

Easy-to-use and durable layout tool for one-person operation



LEICA iCON iCT30 Construction Layout Tool

- **Made for Construction:** equipped with the well-established and construction tailored field software Leica iCON build, the iCT30 meets most requirements for layout applications and as-built checks
- **Go digital:** the easy-to-use combination of iCT30 and iCON build field software facilitate the move from traditional analogue to modern digital layout methods
- **Maximise uptime:** layout more points per day with the most stable prism lock for construction layout tools
- **One-person-operation:** with the robotic construction layout tool iCT30, only one person is required to fulfil the layout tasks. Easy-to-use hardware and software enables the whole workforce on your site to layout

With the Leica iCON iCT30, Leica Geosystems introduces a construction layout tool that is tailored to any layout task in the building construction industry. The iCT30 in combination with Leica iCON build field software is an easy to use solution that facilitates the move from traditional analogue layout methods to modern digital techniques. Even though the iCT30 is highly accurate it is durable to withstand tough and challenging building construction environments.

leica-geosystems.com



- when it has to be **right**

Leica
Geosystems

PART OF
HEXAGON

Leica iCON iCT30 Construction Layout Tool



Leica iCON iCT30

ANGULAR MEASUREMENT

Accuracy ¹ Hz and V	Absolute, continuous, diametrical	9" (2.7 mgon)
--------------------------------	-----------------------------------	---------------

DISTANCE MEASUREMENT

Range ²	Prism Non-Prism / Any surface ³	1.5 m to 80 m 1.5 m to 80 m
Accuracy / Measurement time	Single (prism) ^{2,4} Single (any surface) ^{3,4}	1mm / typically 2.4 s 2mm / typically 3 s
Laser dot size	At 50 m	8 mm x 20 mm Coaxial, visible red laser

AUTOMATIC AIMING

Target aiming type		ATR
Target aiming & Target locking range ²	Prism	80 m / 80 m
Accuracy ^{1,2} / Measurement time	ATR angle accuracy Hz, V	9" (2.7 mgon) typically 3-4 s

PRISM SEARCH

Prism search type		AutoSearch
Range / Search time	Prism	80 m / typically 15 s

GUIDE LIGHT (EGL)

Working range / Accuracy		5-80 m / typically 2 cm @ 40 m
--------------------------	--	--------------------------------

GENERAL

Field software	Leica iCON field software	iCON build software running on field tablet connected via BT or LR-BT (optional)
Display & keyboard		4 button keyboard with status LEDs
Laser Plummet		Yes
Power management	Exchangeable Lithium-Ion battery	Operating time 8-10 h
Interfaces	RS232, USB, Bluetooth®	
Weight	Layout tool including battery	5.0 kg
Environmental specifications	Working temperature range Dust / Water (IEC 60529) / Humidity	-20 °C to +50 °C IP55 / 95 %, non-condensing

¹ Standard deviation ISO 17123-3

² Overcast, no haze, visibility about 40 km, no heat shimmer

³ Object in shade, sky overcast, Kodak Gray Card (18% reflective)

⁴ Standard deviation ISO 17123-4

The Bluetooth® trademarks are owned by Bluetooth SIG, Inc.

Laser radiation, avoid direct eye exposure. Class 3R laser product in accordance with IEC 60825-1:2014.

Copyright Leica Geosystems AG, 9435 Heerbrugg, Switzerland. All rights reserved. Printed in Switzerland - 2019.
Leica Geosystems AG is part of Hexagon AB. 881190en - 04.19

Leica Geosystems AG
Heinrich-Wild-Strasse
9435 Heerbrugg, Switzerland
+41 71 727 31 31

- when it has to be **right**

Leica
Geosystems