

## LANGY SOLAR STREET LIGHT FT Series User Manual

Web: [www.langy-energy.com](http://www.langy-energy.com)  
Email: [support@langysolar.net](mailto:support@langysolar.net)

💡 Thank you for purchasing our products! This manual is suitable for FT series split solar street light, please read and comply with this manual before using the products.

**FOR FIRST TIME USE:** The solar light needs to charge in full sunlight for 6-8 hours.

### ⚠️ WARNING!

The light is super bright, please don't directly look or stare at the light.  
The light is not a toy, please keep away from kids.

## REMOTE CONTROL FUNCTION



- Radar mode ( Dim when no motion is detects, Bright when motion is detects)
- ON** Turn ON
- OFF** Turn OFF
- Full brightness
- Half brightness
- +** Brightness +
- Brightness -
- 4H** Stay on 4 hours then go to radar mode
- AUTO** Stay on whole night
- 3H** Stay on 3hours
- 5H** Stay on 5hours
- 8H** Stay on 8hours

## PACKING INCLUDE



Before installing the solar lamp, please check the package contents to ensure all parts are free of visible damage.

## INSTALLATION

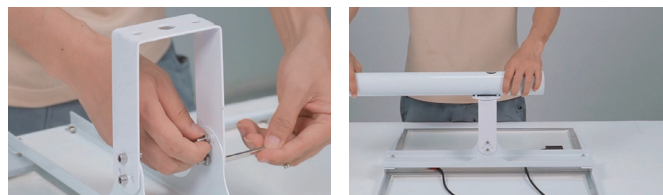
Test the height and the spacing in between before installing. Recommended installation height:

< 16ft-24ft

## SOLAR LAMP ASSEMBLE STEPS



1. Use the connecting pieces to fix two solar panels (8×M5 screws).
2. Fix the rectangle bracket on the solar panel (4×M5 screws).



3. Fix U-shaped bracket on the rectangle brackets (4×M5 screws).
4. Connect the light arm on the U-shaped bracket (2×M8 screws).



5. Pull out the cable & connect the light arm to lamp

## WALL INSTALLATION STEPS



1. Mark the hole location where you want to mount.
2. Drill 4 holes as per the location



3. Knock the wall bolts into the wall and loosen the screws nuts.
4. Fix the bracket on the wall with screw nuts.

## ⚠ IMPORTANT SAFETY INFORMATION

### LITHIUM BATTERY SAFETY WARNINGS

Lithium batteries store a large amount of energy and will vent fire or explode if mistreated

- **Keep the Battery compartment and battery dry.**
- **DO NOT DO ANY OF THE FOLLOWING TO THE BATTERY:**
  - a) Open
  - b) Drop
  - c) Short-Circuit
  - d) Puncture
  - e) Incinerate
  - f) Expose to temperatures greater than 60 ° C.
  - g) Do not use or charge the battery if damaged.

### IMPORTANT SAFETY INFORMATION

- Carefully read all instructions in this manual before installation of the product.
- Keep installation area clean. (Cluttered areas invite accidents)
- Observe installation area conditions. Keep work area well lit during installation.
- Check hardware and assembled parts after assembling. All connections should be tight and hardware tightened.
- Replacement parts and accessories. When servicing , use only identical replacement parts . Use of any other parts will void the warranty.
- The light source of this luminaire is non replaceable; when the light source reaches its end of life the whole luminaire shall be replaced.
- The battery is nonreplaceable. When the battery reaches the end of life, the user must discard the entire light fixture and replace with a new light fixture.
- Verify that the installation surface has not hidden utility lines before drilling or driving screws.
- Keep children away. Mount the Light, Solar Panel and Cord out of children's reach.
- Dress properly. Protective, electrically non-conductive clothes and non-skid footwear are recommended when working with the Solar Batten Light.
- Do not overreach. Keep proper footing and balance at all times. If a ladder is to be used during this installation, it should be supported by an assistant.
- The warnings , precautions, and instructions discussed in this instruction manual cannot cover all possible conditions and situations that may occur. It must be understood by the operator that common sense and caution are factors that cannot be built into this product but must be supplied by the operator.

### TROUBLE SHOOTING

The light can't turn on:

1. Please make sure the solar panel don't close to any light sources.
2. Please charge in full sunlight for 5-6 hours before use.

### WARRANTY INFORMATION

From the date of purchase	Return	Refund	Repair
Within 30days	Free	YES	Free
After 30days within 356days	NO	NO	Free

Please send order number to [support@langysolar.net](mailto:support@langysolar.net)



Please scan the QR code for the installation video.



Light assembly steps



Pole installation



Wall installation