

CONGRATULATIONS!

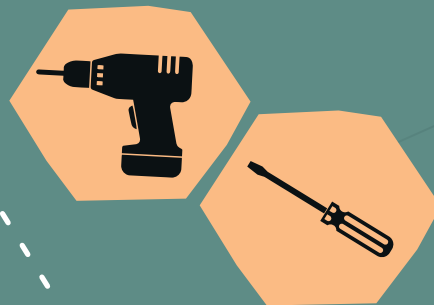
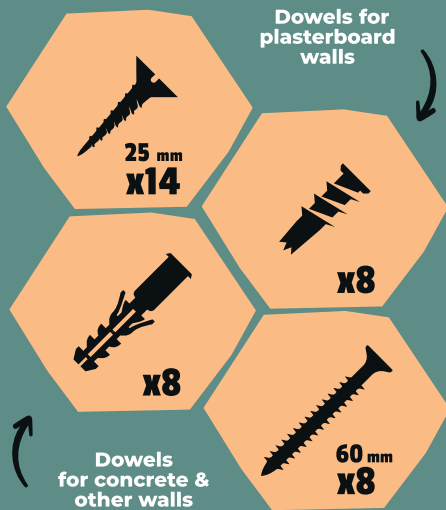
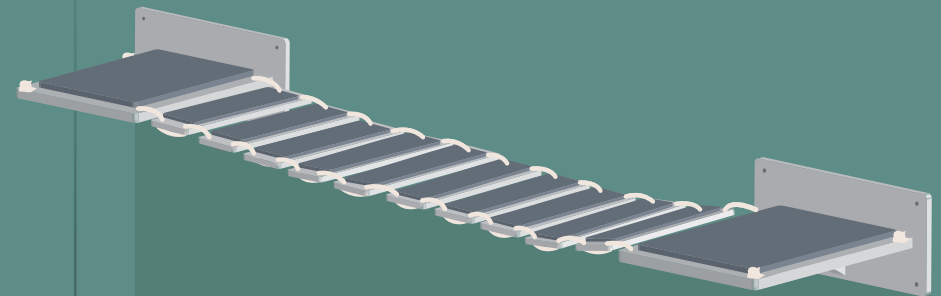
you`ve received the cat bridge

**FOR
ASSEMBLY
YOU WILL
NEED:**



CATSMODE NASTRUCTIONS

CAT BRIDGE ASSEMBLY



**SCREWS
AND DOWELS** Included to
the package

**SCREWDRIVER
OR HAMMER DRILL**

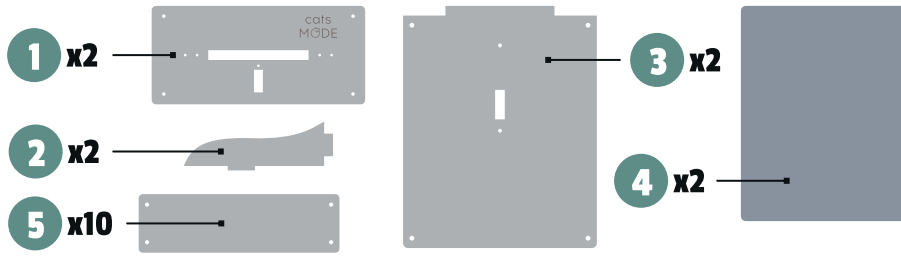


WWW.CATS-MODE.COM

CAT'S BRIDGE

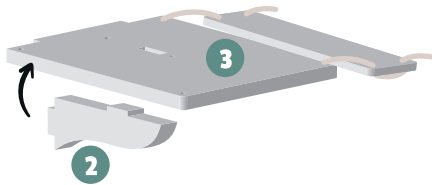
1 Sit comfortably and use a flat surface for assembly. Lay all the parts in front of You.

19
DESIGN PARTS IN THE



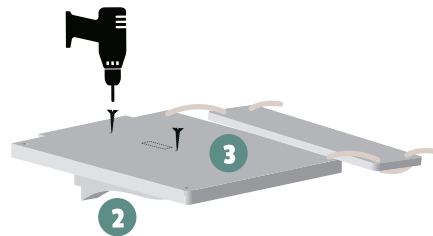
2

Take the parts **2** and **3** and connect them on both sides, as shown.

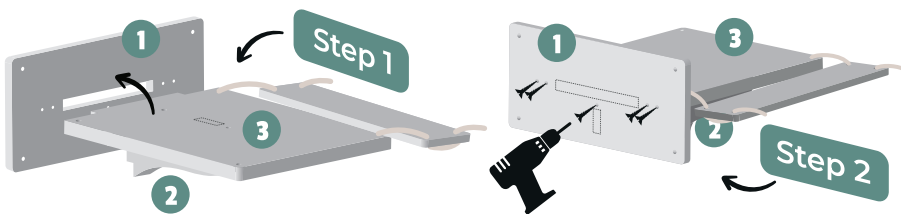


3

Fix the construction **2** + **3** with the Screws

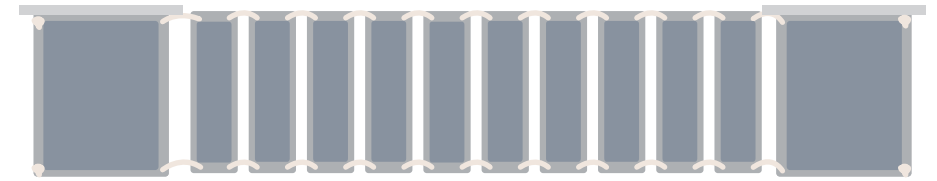
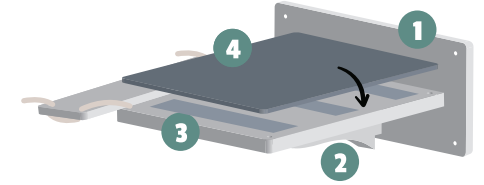


4 Insert in the panel **1** the panel **3**. Fix that with the screws from the back.



5

Put the felt carpets **4** on both sides of the bridge, as shown.



7 Place the sides on the wall and mark the spots for the dowels. Drill them into the wall. Fix the bridge on the wall with the screws. Make sure the Construction is firm.

