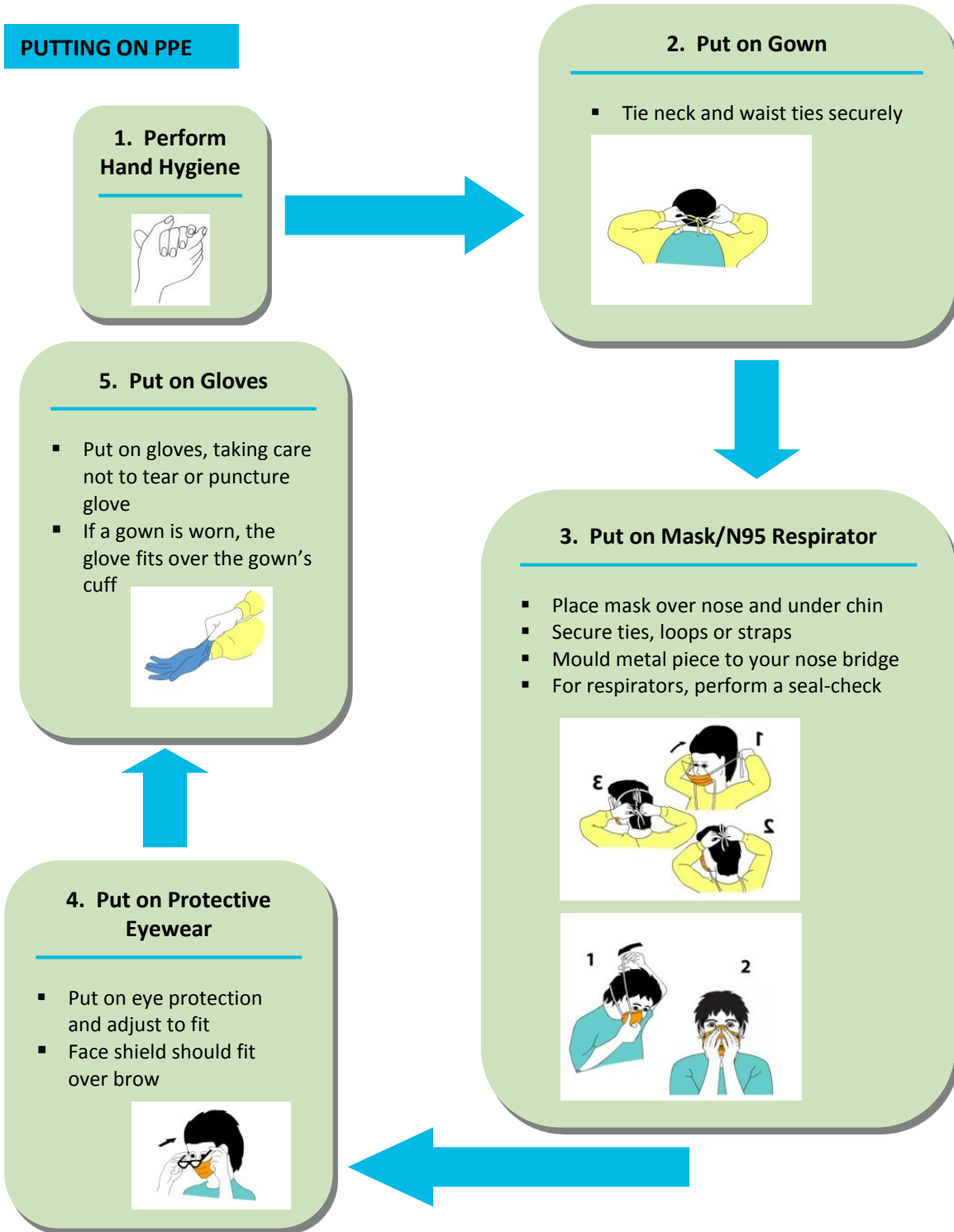


APPENDIX L: RECOMMENDED STEPS FOR PUTTING ON AND TAKING OFF PERSONAL PROTECTIVE EQUIPMENT (PPE)

[Images developed by Kevin Rostant.

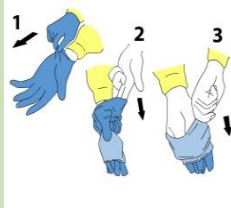
Some images adapted from Northwestern Ontario Infection Control Network – NWOICN]



TAKING OFF PPE

1. Remove Gloves

- Remove gloves using a glove-to-glove/skin-to-skin technique
- Grasp outside edge near the wrist and peel away, rolling the glove inside-out
- Reach under the second glove and peel away
- Discard immediately into waste receptacle



2. Remove Gown

- Remove gown in a manner that prevents contamination of clothing or skin
- Starting at the neck ties, the outer, 'contaminated', side of the gown is pulled forward and turned inward, rolled off the arms into a bundle, then discarded immediately in a manner that minimizes air disturbance



6. Perform Hand Hygiene

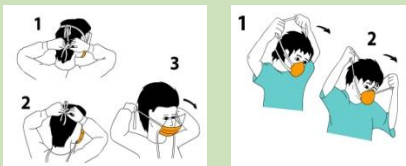


3. Perform Hand Hygiene



5. Remove Mask/N95 Respirator

- Ties/ear loops/straps are considered 'clean' and may be touched with hands
- The front of the mask/respirator is considered to be contaminated
- Untie bottom tie then top tie, or grasp straps or ear loops
- Pull forward off the head, bending forward to allow mask/respirator to fall away from the face
- Discard immediately into waste receptacle



4. Remove Eye Protection

- Arms of goggles and headband of face shields are considered to be 'clean' and may be touched with the hands
- The front of goggles/face shield is considered to be contaminated
- Remove eye protection by handling ear loops, sides or back only
- Discard into waste receptacle or into appropriate container to be sent for reprocessing
- Personally-owned eyewear may be cleaned by the individual after each use

