

**COMMERCIAL AND DOMESTIC DRAINAGE
PRODUCT RANGE**





When Grates 2 Go Australia was founded our goal was to create a company that understands the needs of the Australian building industry. We offer bespoke, custom made drainage solutions with an emphasis on efficient delivery timeframes.

Get tailored, made to measure stainless drainage for your building or renovation project. With Grates 2 Go Australia you'll enjoy access to an entire team of experienced experts to ensure the perfect fit.

We've built a reputation as Sydney's most reliable and efficient grate and channel manufacturers. Over many years working with bespoke drainage, we've seen and managed it all – from the most basic through to very complex projects.

INDEX

2	Stainless Steel
3	The Premium Collection
6	Point Drain Floor Waste
8	Aluminium Drainage
10	UPVC Modular Drainage
13	Outdoor Drainage
17	Stainless Steel Modular Grate & Channel
19	Polymer Channel Kits
20	Custom Manufacturing
21	Trade



STAINLESS STEEL DRAINAGE

Bespoke stainless steel grates and channels, made to your specifications. We understand that no two jobs are the same, so ordering directly from the manufacturer enables you to get the exact widths, depths and lengths required for your specific project.

Our made to measure stainless steel drains are offered in standard widths of 100mm and 75mm, plus the option to customise the width to your specification. Being the most common sizes, we have these channels pre-folded in stock to get them to you faster and at the most affordable price. This gives you the freedom of a custom length, outlet size and position without a custom order lead time.



PRODUCT CODE: G2GWW75 | G2GWW100

WEDGE WIRE GRATE & CHANNEL

Width: 75mm, 100mm
Depth: 25mm
Length: Custom made to your requirements
Outlet Sizes: 38mm, 44mm, 51mm, 63mm, 76mm, 85mm
Outlet Position: Custom made to your requirements
Material: 316 grade stainless steel



PRODUCT CODE: G2GTI75 | G2GTI100

TILE INSERT CHANNEL

Width: 75mm, 100mm
Depth: 25mm (35mm available in 100mm width)
Length: Custom made to your requirements
Outlet Sizes: 38mm, 44mm, 51mm, 63mm, 76mm, 85mm
Outlet Position: Custom made to your requirements
Material: 316 grade stainless steel



PRODUCT CODE: G2GFP75 | G2GFP100

FLOW PATTERN GRATE & CHANNEL

Width: 75mm, 100mm
Depth: 25mm
Length: Custom made to your requirements
Outlet Sizes: 38mm, 44mm, 51mm, 63mm, 76mm, 85mm
Outlet Position: Custom made to your requirements
Material: 316 grade stainless steel



PRODUCT CODE: G2GBP75 | G2GBP100

BRICK PATTERN GRATE & CHANNEL

Width: 75mm, 100mm
Depth: 25mm
Length: Custom made to your requirements
Outlet Sizes: 38mm, 44mm, 51mm, 63mm, 76mm, 85mm
Outlet Position: Custom made to your requirements
Material: 316 grade stainless steel



PRODUCT CODE:

TILE INSERT DRAIN & ADJUSTABLE SPIGOT

Width: 100mm
Depth: 25mm
Length: 900mm, 1000mm, 1200mm
Outlet Sizes: 44mm, 51mm, 63mm, 76mm, 85mm
Material: 316 grade stainless steel



PRODUCT CODE:

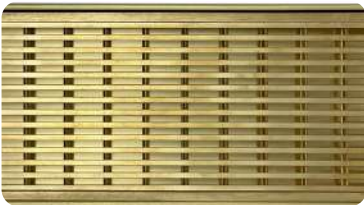
CHANNEL DRAIN SPIGOTS

Width: 100mm
Depth: 25mm
Outlet Sizes: 44mm, 51mm, 63mm, 76mm, 85mm
Material: 316 grade stainless steel



Introducing the Premium Collection. The gold standard in luxury linear drainage that's custom made to be the perfect fit for your project. Clean, modern lines with a selection of deluxe finishes, to coordinate with your fixtures and fittings for a truly impressive result.

The natural brass grate and channel drains are strong, durable and beautiful. The ultimate in luxury. If an ultra modern look is more your style, you can't go past the matte black drainage collection. A subtle and timeless statement piece. Or for a stunning shine, our polished bathroom drainage. The look or chrome with the strength and durability of stainless steel.



PRODUCT CODE: G2GWW100NB

BRASS WEDGE WIRE GRATE & CHANNEL

Width: 100mm
 Depth: 25mm
 Length: Custom made to your requirements
 Outlet Sizes: 38mm, 44mm, 51mm, 63mm, 76mm, 85mm
 Outlet Position: Custom made to your requirements
 Material: Stainless steel electroplated in natural brass



PRODUCT CODE: G2GTI100NB

BRASS TILE INSERT CHANNEL

Width: 100mm
 Depth: 25mm (extra deep 35mm also available)
 Length: Custom made to your requirements
 Outlet Sizes: 38mm, 44mm, 51mm, 63mm, 76mm, 85mm
 Outlet Position: Custom made to your requirements
 Material: Natural brass



PRODUCT CODE: G2GBP100NB

BRASS BRICK PATTERN GRATE & CHANNEL

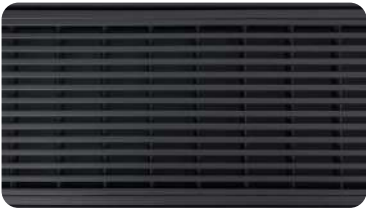
Width: 100mm
 Depth: 25mm
 Length: Custom made to your requirements
 Outlet Sizes: 38mm, 44mm, 51mm, 63mm, 76mm, 85mm
 Outlet Position: Custom made to your requirements
 Material: Natural brass



PRODUCT CODE: G2GFP100NB

BRASS FLOW PATTERN GRATE & CHANNEL

Width: 100mm
 Depth: 25mm
 Length: Custom made to your requirements
 Outlet Sizes: 38mm, 44mm, 51mm, 63mm, 76mm, 85mm
 Outlet Position: Custom made to your requirements
 Material: Natural brass



PRODUCT CODE: G2GWW75MB | G2GWW100MB

MATTE BLACK WEDGE WIRE GRATE & CHANNEL

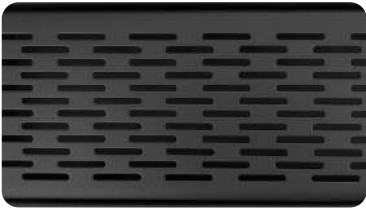
Width: 75mm, 100mm
 Depth: 25mm
 Length: Custom made to your requirements
 Outlet Sizes: 38mm, 44mm, 51mm, 63mm, 76mm, 85mm
 Outlet Position: Custom made to your requirements
 Material: Stainless steel with black electrostatic coating



PRODUCT CODE: G2GTI75MB | G2GTI100MB

MATTE BLACK TILE INSERT CHANNEL

Width: 75mm, 100mm
 Depth: 25mm
 Length: Custom made to your requirements
 Outlet Sizes: 38mm, 44mm, 51mm, 63mm, 76mm, 85mm
 Outlet Position: Custom made to your requirements
 Material: Stainless steel with black electrostatic coating



PRODUCT CODE: G2GBP100MB

MATTE BLACK BRICK PATTERN GRATE & CHANNEL

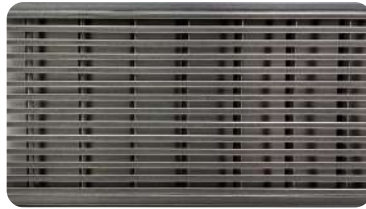
Width: 100mm
 Depth: 25mm
 Length: Custom made to your requirements
 Outlet Sizes: 38mm, 44mm, 51mm, 63mm, 76mm, 85mm
 Outlet Position: Custom made to your requirements
 Material: Stainless steel with black electrostatic coating



PRODUCT CODE: G2GFP100MB

MATTE BLACK FLOW PATTERN GRATE & CHANNEL

Width: 100mm
 Depth: 25mm
 Length: Custom made to your requirements
 Outlet Sizes: 38mm, 44mm, 51mm, 63mm, 76mm, 85mm
 Outlet Position: Custom made to your requirements
 Material: Stainless steel with black electrostatic coating



PRODUCT CODE: G2GWW75GM | G2GWW100GM

GUNMETAL WEDGE WIRE GRATE & CHANNEL

Width: 75mm, 100mm
 Depth: 25mm
 Length: Custom made to your requirements
 Outlet Sizes: 38mm, 44mm, 51mm, 63mm, 76mm, 85mm
 Outlet Position: Custom made to your requirements
 Material: Stainless steel with grey electrostatic coating



PRODUCT CODE: G2GTI75GM | G2GTI100GM

GUNMETAL TILE INSERT CHANNEL

Width: 75mm, 100mm
 Depth: 25mm
 Length: Custom made to your requirements
 Outlet Sizes: 38mm, 44mm, 51mm, 63mm, 76mm, 85mm
 Outlet Position: Custom made to your requirements
 Material: Stainless steel with grey electrostatic coating



PRODUCT CODE: G2GFP75GM | G2GFP100GM

GUNMETAL FLOW PATTERN GRATE & CHANNEL

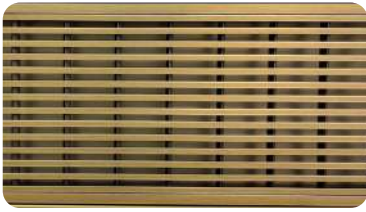
Width: 75mm, 100mm
 Depth: 25mm
 Length: Custom made to your requirements
 Outlet Sizes: 38mm, 44mm, 51mm, 63mm, 76mm, 85mm
 Outlet Position: Custom made to your requirements
 Material: Stainless steel with grey electrostatic coating



PRODUCT CODE: G2GBP75GM | G2GBP100GM

GUNMETAL BRICK PATTERN GRATE & CHANNEL

Width: 75mm, 100mm
 Depth: 25mm
 Length: Custom made to your requirements
 Outlet Sizes: 38mm, 44mm, 51mm, 63mm, 76mm, 85mm
 Outlet Position: Custom made to your requirements
 Material: Stainless steel with grey electrostatic coating



PRODUCT CODE: G2GWW75BG | G2GWW100BG

GOLD WEDGE WIRE GRATE & CHANNEL

Width: 75mm, 100mm
 Depth: 25mm
 Length: Custom made to your requirements
 Outlet Sizes: 38mm, 44mm, 51mm, 63mm, 76mm, 85mm
 Outlet Position: Custom made to your requirements
 Material: Stainless steel with gold electrostatic coating



PRODUCT CODE: G2GTI75BG | G2GTI100BG

GOLD TILE INSERT CHANNEL

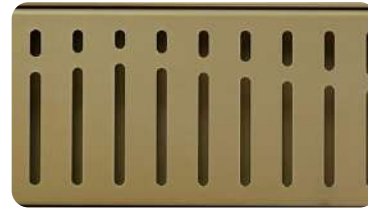
Width: 75mm, 100mm
 Depth: 25mm
 Length: Custom made to your requirements
 Outlet Sizes: 44mm, 51mm, 63mm, 76mm, 85mm
 Outlet Position: Custom made to your requirements
 Material: Stainless steel with gold electrostatic coating



PRODUCT CODE: G2GBP75BG | G2GBP100BG

GOLD BRICK PATTERN GRATE & CHANNEL

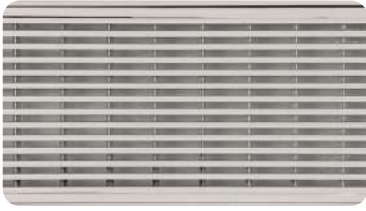
Width: 75mm, 100mm
 Depth: 25mm
 Length: Custom made to your requirements
 Outlet Sizes: 38mm, 44mm, 51mm, 63mm, 76mm, 85mm
 Outlet Position: Custom made to your requirements
 Material: Stainless steel with gold electrostatic coating



PRODUCT CODE: G2GBP75BG | G2GBP100BG

GOLD FLOW PATTERN GRATE & CHANNEL

Width: 75mm, 100mm
 Depth: 25mm
 Length: Custom made to your requirements
 Outlet Sizes: 38mm, 44mm, 51mm, 63mm, 76mm, 85mm
 Outlet Position: Custom made to your requirements
 Material: Stainless steel with gold electrostatic coating



PRODUCT CODE: G2GWW75W | G2GWW100W

WHITE WEDGE WIRE GRATE & CHANNEL

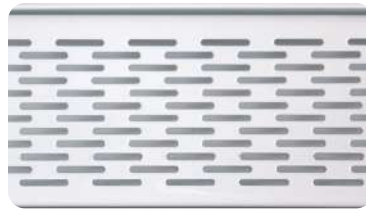
Width: 75mm, 100mm
 Depth: 25mm
 Length: Custom made to your requirements
 Outlet Sizes: 38mm, 44mm, 51mm, 63mm, 76mm, 85mm
 Outlet Position: Custom made to your requirements
 Material: Stainless steel with white electrostatic coating



PRODUCT CODE: G2GTI75W | G2GTI100W

WHITE TILE INSERT CHANNEL

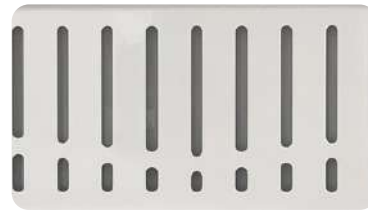
Width: 75mm, 100mm
 Depth: 25mm
 Length: Custom made to your requirements
 Outlet Sizes: 38mm, 44mm, 51mm, 63mm, 76mm, 85mm
 Outlet Position: Custom made to your requirements
 Material: Stainless steel with white electrostatic coating



PRODUCT CODE: G2GBP75W | G2GBP100W

WHITE BRICK PATTERN GRATE & CHANNEL

Width: 75mm, 100mm
 Depth: 25mm
 Length: Custom made to your requirements
 Outlet Sizes: 38mm, 44mm, 51mm, 63mm, 76mm, 85mm
 Outlet Position: Custom made to your requirements
 Material: Stainless steel with white electrostatic coating



PRODUCT CODE: G2GFP75W | G2GFP100W

WHITE FLOW PATTERN GRATE & CHANNEL

Width: 75mm, 100mm
 Depth: 25mm
 Length: Custom made to your requirements
 Outlet Sizes: 38mm, 44mm, 51mm, 63mm, 76mm, 85mm
 Outlet Position: Custom made to your requirements
 Material: Stainless steel with white electrostatic coating

POINT DRAIN FLOOR WASTE



PRODUCT CODE: DIANA-110

DIANA SMART TILE POINT DRAIN

Size: 110mm
Depth: 25mm
Outlet Size: 80mm
Material: 316 grade stainless steel
Brand: Sedek



PRODUCT CODE: MILA-110

MILA POINT DRAIN

Size: 110mm
Depth: 8mm
Outlet Size: 90mm
Material: 316 grade stainless steel (colours electroplated)
Colours: Stainless Steel, Matte Black, Brushed Gold
Brand: Sedek



PRODUCT CODE: KANO-120-316-90

KANO SMART TILE POINT DRAIN

Size: 120mm
Depth: 20mm
Outlet Size: 90mm
Material: 316 grade stainless steel (colours electroplated)
Colours: Stainless Steel, Matte Black, Brushed Gold
Brand: Sedek



PRODUCT CODE: G2G-NB | G2G-AB | G2G-BOB | G2G-COB

SMART TILE POINT DRAIN

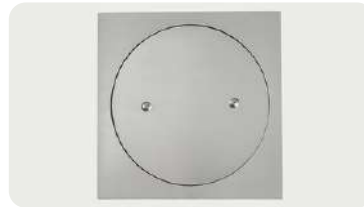
Size: 115mm
Depth: 23mm (25mm in chrome)
Outlet Size: 90mm
Material: Solid brass with electrostatic coating.
Colours: Natural Brass, Black, Antique Brass, Chrome



PRODUCT CODE: G2G-BS | G2G-ANCIENTS | G2G-CS | G2G-SNS | G2G-RG

SLIMLINE BRASS POINT DRAIN

Size: 100mm
Depth: 9mm
Outlet Size: 80mm
Material: Brass base with electroplated finish
Colours: Black, Antique Brass, Chrome, Satin Nickel, Rose Gold



PRODUCT CODE: G2G-COC | G2G-COB | G2G-COGS | G2G-CON

SLIMLINE CLEAR OUT POINT DRAIN

Size: 110mm
Depth: 17mm
Outlet Size: 95mm
Material: Solid brass with electrostatic coating
Colours: Chrome, Black, Gold, Nickel



PRODUCT CODE: G2GPV-1G | G2GPV-1B | G2GPV-1W

UPVC SMART TILE POINT DRAIN

Size: 117mm
Depth: 21mm
Outlet Size: 70mm, 90mm
Material: UPVC
Colours: Grey, Black, White



PRODUCT CODE: G2G5B | GG2-7G

UPVC SLIMLINE WEDGE WIRE POINT DRAIN

Size: 117mm
Depth: 11mm
Outlet Size: 90mm
Material: UPVC Base with Stainless Steel Grate
Colours: Grey or Black Base. Stainless Steel Grate.

POINT DRAIN FLOOR WASTE



PRODUCT CODE: G2G-6B

UPVC BLACK SLIMLINE WEDGE WIRE POINT DRAIN

Size: 117mm
Depth: 11mm
Outlet Size: 90mm
Material: UPVC Base with Stainless Steel Grate
(grate has black electrostatic coating)
Colours: Black



PRODUCT CODE: G2G-11W

UPVC WHITE SLIMLINE WEDGE WIRE POINT DRAIN

Size: 117mm
Depth: 11mm
Outlet Size: 90mm
Material: UPVC Base with Stainless Steel Grate
(grate has white electrostatic coating)
Colours: (grate has white electrostatic coating)
Brand: White



ALUMINIUM DRAINAGE



If you're looking for a drain that is both stylish and functional, then look no further than our Innovation Series. Made from high quality aluminium, our drains are built to last and will look great in any bathroom. Available in a choice of slotted grate or tile insert strip drain. With a choice of three anodised colours - brushed silver, brushed black and brushed gold. Each strip drain comes with an outlet and a pair of end caps for you to complete installation.



PRODUCT CODE: MS-14GRT-S | MS-21GRT-S | MS-26GRT-S

BRUSHED SILVER SLOTTED GRATE DRAIN

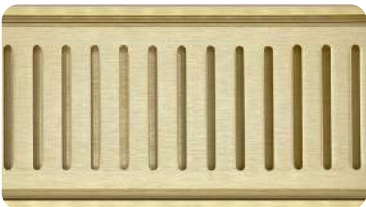
Width: 100mm
Depth: 14mm, 21mm, 26mm
Length: Custom made to your requirements
Outlet Sizes: 50mm, 80mm
Material: Anodised aluminium
Contents: Grate, channel, outlet, end caps



PRODUCT CODE: MS-14GRTS-B | MS-21GRT-B | MS-26GRT-B

BRUSHED BLACK SLOTTED GRATE DRAIN

Width: 100mm
Depth: 14mm, 21mm, 26mm
Length: Custom made to your requirements
Outlet Sizes: 50mm, 80mm
Material: Anodised aluminium
Contents: Grate, channel, outlet, end caps



PRODUCT CODE: MS-14GTR-G | MS-21GRT-G | MS-26GRT-G

BRUSHED GOLD SLOTTED GRATE DRAIN

Width: 100mm
Depth: 14mm, 21mm, 26mm
Length: Custom made to your requirements
Outlet Sizes: 50mm, 80mm
Material: Anodised aluminium
Contents: Grate, channel, outlet, end caps



PRODUCT CODE: MS-21TIG-S | MS-26TIG-S

BRUSHED SILVER TILE INSERT DRAIN

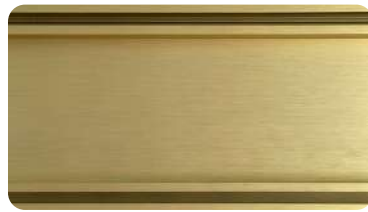
Width: 100mm
Depth: 21mm, 26mm
Length: Custom made to your requirements
Outlet Sizes: 50mm, 80mm
Material: Anodised aluminium
Contents: Grate, channel, outlet, end caps



PRODUCT CODE: MS-21TIG-B | MS-26TIG-B

BRUSHED BLACK TILE INSERT DRAIN

Width: 100mm
 Depth: 21mm, 26mm
 Length: Custom made to your requirements
 Outlet Sizes: 50mm, 80mm
 Material: Anodised aluminium
 Contents: Grate, channel, outlet, end caps



PRODUCT CODE: MS-26TIG-G | MS-26TIG-G

BRUSHED GOLD TILE INSERT DRAIN

Width: 100mm
 Depth: 14mm, 21mm, 26mm
 Length: Custom made to your requirements
 Outlet Sizes: 50mm, 80mm
 Material: Anodised aluminium
 Contents: Grate, channel, outlet, end caps



PRODUCT CODE: MS-PW50-SILVER | MS-PW80-SILVER

BRUSHED SILVER OUTLET

Width: 50mm, 80mm
 Material: Anodised aluminium



PRODUCT CODE: MS-PW50-BLACK | MS-PW80-BLACK

BRUSHED BLACK OUTLET

Width: 50mm, 80mm
 Material: Anodised aluminium



PRODUCT CODE: MS-PW50-GOLD | MS-PW80-GOLD

BRUSHED GOLD OUTLET

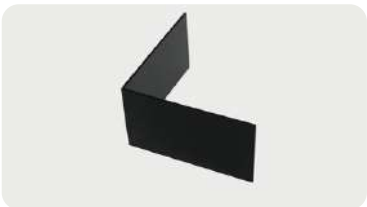
Width: 50mm, 80mm
 Material: Anodised aluminium



PRODUCT CODE: MS-26JOINER-S | MS-26JOINER-B | MS-26JOINER-G
 MS-14JOINER-S | MS-14JOINER-B | MS-14JOINER-G

DRAIN JOINERS

Length: 80mm
 22mm
 Width: Brushed silver, brushed black, brushed gold
 Colours: Anodised aluminium
 Material:



PRODUCT CODE: MS-26CORNER-S | MS-26CORNER-B | MS-26CORNER-G
 MS-14CORNER-S | MS-14CORNER-B | MS-14CORNER-G

DRAIN CORNERS

Length: 40mm
 Width: 22mm
 Colours: Brushed silver, brushed black, brushed gold
 Material: Anodised aluminium



PRODUCT CODE: MS-TCT80MM

HOLE SAW KIT

Width: 80mm

UPVC MODULAR DRAINAGE



Our UPVC modular kits are an easy do-it-yourself bathroom drainage system, pre-packaged in kit form. The kits contain everything you need to make up a shower grate and channel for your bathroom project.

Our Grates 2 Go Modular system has been fully tested and achieved the WaterMark standard for the Plumbing code of Australia.

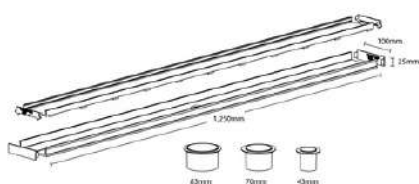


PRODUCT CODE: G2GAM1250-TI-B | G2GAM1250-TI-G

UPVC TILE INSERT MODULAR KIT

Width: 100mm
 Depth: 25mm
 Length: 1250mm
 Outlet Sizes: 43mm, 70mm, 83mm
 Material: UPVC
 Colours: Grey, Black

Kit Contains: UPVC Tile Insert Channel
 UPVC Base Channel
 UPVC Insert Channel End Caps
 UPVC Base Channel End Caps
 UPVC Outlets (43mm, 70mm, & 83mm)
 3 x Holesaws
 Silicone

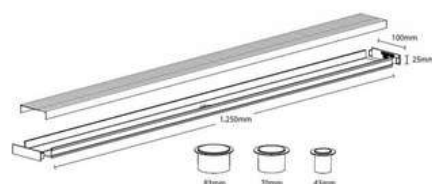


PRODUCT CODE: G2GAM1250-WW-B | G2GAM1250-WW-G

UPVC WEDGE WIRE MODULAR KIT

Width: 100mm
 Depth: 25mm
 Length: 1250mm
 Outlet Sizes: 43mm, 70mm, 83mm
 Material: 316 grade stainless steel grate with UPVC channel, outlet and end caps
 Colours: Grey, Black

Kit Contains: Stainless Steel Wedge Wire Grate
 UPVC Base Channel
 UPVC Base Channel End Caps
 UPVC Outlets (43mm, 70mm, & 83mm)
 3 x Holesaws
 Silicone



UPVC MODULAR DRAINAGE

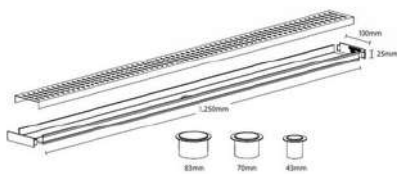


PRODUCT CODE: G2GAM1250-SFP-B | G2GAM1250-SFP-G

UPVC FLOW PATTERN MODULAR KIT

Width: 100mm
 Depth: 25mm
 Length: 1250mm
 Outlet Sizes: 43mm, 70mm, 83mm
 Material: 316 grade stainless steel grate with UPVC channel, outlet and end caps
 Colours: Grey, Black

Kit Contains: Stainless Steel Flow Pattern Grate
 UPVC Base Channel
 UPVC Base Channel End Caps
 UPVC Outlets (43mm, 70mm, & 83mm)
 3 x Holesaws
 Silicone



PRODUCT CODE: G2GABC

UPVC MODULAR BASE CHANNEL

Width: 100mm
 Depth: 25mm
 Lengths: 1000mm, 1250mm, 1500mm, 2000mm, 3000mm
 Material: UPVC
 Colours: Grey, Black



PRODUCT CODE: G2GAIC

UPVC TILE INSERT TRAY

Width: 100mm
 Depth: 25mm
 Lengths: 1000mm, 1250mm, 1500mm
 Material: UPVC
 Colours: Grey, Black

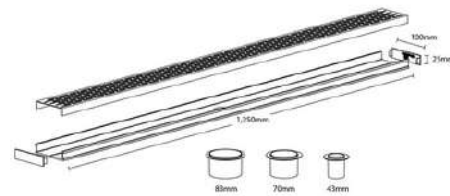


PRODUCT CODE: G2GAM1250-BP-B | G2GAM1250-BP-G

UPVC BRICK PATTERN MODULAR KIT

Width: 100mm
 Depth: 25mm
 Length: 1250mm
 Outlet Sizes: 43mm, 70mm, 83mm
 Material: 316 grade stainless steel grate with UPVC channel, outlet and end caps
 Colours: Grey, Black

Kit Contains: Stainless Steel Brick Pattern Grate
 UPVC Base Channel
 UPVC Base Channel End Caps
 UPVC Outlets (43mm, 70mm, & 83mm)
 3 x Holesaws
 Silicone



PRODUCT CODE: G2GAJSG | G2GAJSB

UPVC JOINING SECTION

Width: 115mm
 Depth: 30mm
 Length: 210mm
 Material: UPVC
 Colours: Grey, Black



PRODUCT CODE: G2GA90CG | G2GA90CB

UPVC 90 DEGREE CORNER

Width: 204mm
 Depth: 25mm
 Length: 204mm
 Material: UPVC
 Colours: Grey, Black



PRODUCT CODE: G2GABCECB | G2GABCECG

UPVC BASE CHANNEL END CAP

Width: 13mm
Depth: 25mm
Length: 100mm
Material: UPVC
Colours: Grey, Black



PRODUCT CODE: G2GATIECB | G2GATIECG

UPVC TILE INSERT TRAY END CAP

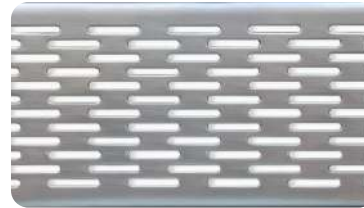
Width: 16mm
Depth: 20mm
Length: 94mm
Material: UPVC
Colours: Grey, Black



PRODUCT CODE: G2GA43S | G2GA70S | G2GA83S

UPVC SPIGOTS

Width: 43mm, 70mm, 83mm
Material: UPVC
Colours: Grey, Black



PRODUCT CODE: G2GASBPG1000 | G2GASBPG1250 | G2GASBPG1500

BRICK PATTERN GRATE

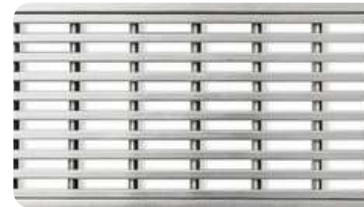
Width: 94mm
Depth: 20mm
Length: 1000mm, 1250mm, 1500mm
Material: 316 grade stainless steel



PRODUCT CODE: G2GASFPG1000 | G2GASFPG1250 | G2GASFPG1500

FLOW PATTERN GRATE

Width: 94mm
Depth: 20mm
Length: 1000mm, 1250mm, 1500mm
Material: 316 grade stainless steel



PRODUCT CODE: G2GASWWG1000, G2GASWWG1250, G2GASWWG1500

WEDGE WIRE GRATE

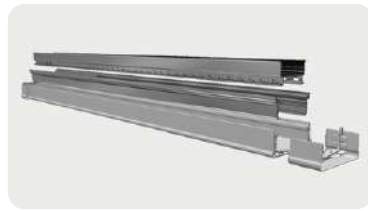
Width: 94mm
Depth: 20mm
Length: 1000mm, 1250mm, 1500mm
Material: 316 grade stainless steel



Outdoor drainage is a collection of products and solutions designed to efficiently manage water flow and prevent flooding in outdoor areas.

This collection includes a wide range of drainage systems, such as strip drains, as well as accessories like grates, corners, and connectors.

These products are made from durable materials, ensuring long-lasting performance and resistance to weather and environmental factors.



ULTRA EDGE TILE INSERT DRAIN

Width: I.D: 61mm, O.D.: 73mm, Overall O.D.: 106mm
 Height: 47mm
 Length: 2000mm
 Pipe Sizes: Spigot O.D.: 69mm
 Pack Options: 1-piece pack (1 x 2000mm length)



PRODUCT CODE: G2G-UDP45

ULTRA DRAIN PLUS 45 OUTDOOR DRAIN

Width: I.D: 85mm, O.D.: 101mm, Overall O.D.: 106mm
 Height: 45mm
 Length: 2000mm
 Pipe Sizes: Spigot O.D.: 68.4mm, Bottom Outlet O.D.: 68mm
 Pack Options: 1-piece pack (1 x 2000mm length)
 2-piece pack (2 x 2000mm lengths)



PRODUCT CODE: G2G-UDP75

ULTRA DRAIN PLUS 75 OUTDOOR DRAIN

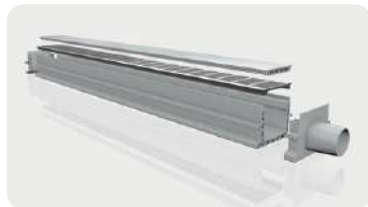
Width: I.D: 55mm, O.D.: 75mm, Overall O.D.: 80mm
 Height: 105mm
 Length: 2000mm
 Pipe Sizes: Spigot O.D.: 53mm, Bottom Outlet O.D.: 79mm
 Pack Options: 1-piece pack (1 x 2000mm length)
 2-piece pack (2 x 2000mm lengths)



PRODUCT CODE: G2G-UDP100

ULTRA DRAIN PLUS 100 OUTDOOR DRAIN

Width: I.D: 89mm, O.D.: 120mm, Overall O.D.: 120mm
 Height: 102.5mm
 Length: 2000mm
 Pipe Sizes: Spigot O.D.: 68mm, Bottom Outlet O.D.: 68mm
 Pack Options: 1-piece pack (1 x 2000mm length)
 2-piece pack (2 x 2000mm lengths)



PRODUCT CODE: G2G-UDP130

ULTRA DRAIN PLUS 130 OUTDOOR DRAIN

Width: I.D: 100mm, O.D.: 130mm, Overall O.D.: 160mm
 Height: 115mm
 Length: 2000mm
 Pipe Sizes: Spigot O.D.: 69mm, Bottom Outlet O.D.: 82mm
 Pack Options: 1-piece pack (1 x 2000mm length)



PRODUCT CODE: G2G-UDP45BO

ULTRA DRAIN PLUS 45 BOTTOM OUTLET

Compatibility: Ultra Drain Plus 45 Outdoor Drain
Brand: Ultra Drain



PRODUCT CODE: G2G-UDP75BO

ULTRA DRAIN PLUS 75 BOTTOM OUTLET

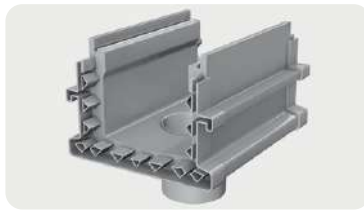
Compatibility: Ultra Drain Plus 75 Outdoor Drain
Brand: Ultra Drain



PRODUCT CODE: G2G-UDP100BO

ULTRA DRAIN PLUS 100 BOTTOM OUTLET

Compatibility: Ultra Drain Plus 100 Outdoor Drain
Brand: Ultra Drain



PRODUCT CODE: G2G-UDP130BO

ULTRA DRAIN PLUS 130 BOTTOM OUTLET

Compatibility: Ultra Drain Plus 130 Outdoor Drain
Brand: Ultra Drain



PRODUCT CODE: G2G-UDP75EO

ULTRA DRAIN PLUS 75 END OUTLET

Compatibility: Ultra Drain Plus 75 Outdoor Drain
Brand: Ultra Drain



PRODUCT CODE: G2G-UDP100EO

ULTRA DRAIN PLUS 100 END OUTLET

Compatibility: Ultra Drain Plus 100 Outdoor Drain
Brand: Ultra Drain



PRODUCT CODE: G2G-UDP130EO

ULTRA DRAIN PLUS 130 END OUTLET

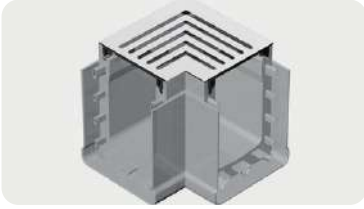
Compatibility: Ultra Drain Plus 130 Outdoor Drain
Brand: Ultra Drain



PRODUCT CODE: G2G-UDP45RA

ULTRA DRAIN PLUS 45 RIGHT ANGLE CORNER

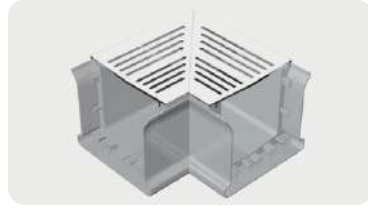
Compatibility: Ultra Drain Plus 45 Outdoor Drain
Brand: Ultra Drain



PRODUCT CODE: G2G-UDP75RA

ULTRA DRAIN PLUS 75 RIGHT ANGLE CORNER

Compatibility: Ultra Drain Plus 75 Outdoor Drain
Brand: Ultra Drain



PRODUCT CODE: G2G-UDP100RA

ULTRA DRAIN PLUS 100 RIGHT ANGLE CORNER

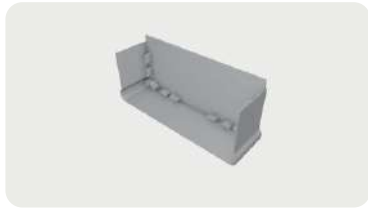
Compatibility: Ultra Drain Plus 100 Outdoor Drain
Brand: Ultra Drain



PRODUCT CODE: G2G-UDP130RA

ULTRA DRAIN PLUS 130 RIGHT ANGLE CORNER

Compatibility: Ultra Drain Plus 130 Outdoor Drain
Brand: Ultra Drain



PRODUCT CODE: G2G-UDP45EC

ULTRA DRAIN PLUS 45 END CAP

Compatibility: Ultra Drain Plus 45 Outdoor Drain
Brand: Ultra Drain



PRODUCT CODE: G2G-UDP75EC

ULTRA DRAIN PLUS 75 END CAP

Compatibility: Ultra Drain Plus 75 Outdoor Drain
Brand: Ultra Drain



PRODUCT CODE: G2G-UDP100EC

ULTRA DRAIN PLUS 100 END CAP

Compatibility: Ultra Drain Plus 100 Outdoor Drain
Brand: Ultra Drain



PRODUCT CODE: G2G-UDP130EC

ULTRA DRAIN PLUS 130 END CAP

Compatibility: Ultra Drain Plus 130 Outdoor Drain
Brand: Ultra Drain



PRODUCT CODE: G2G-UDP45S

ULTRA DRAIN PLUS 45 SPIGOT

Compatibility: Ultra Drain Plus 45 Outdoor Drain
Brand: Ultra Drain



PRODUCT CODE: G2G-UDP45J

ULTRA DRAIN PLUS 45 JOINER

Compatibility: Ultra Drain Plus 45 Outdoor Drain
Brand: Ultra Drain



PRODUCT CODE: G2G-UDP75J

ULTRA DRAIN PLUS 75 JOINER

Compatibility: Ultra Drain Plus 75 Outdoor Drain
Brand: Ultra Drain



PRODUCT CODE: G2G-UDP100J

ULTRA DRAIN PLUS 100 JOINER

Compatibility: Ultra Drain Plus 100 Outdoor Drain
Brand: Ultra Drain



PRODUCT CODE: G2G-UDP130J

ULTRA DRAIN PLUS 130 JOINER

Compatibility: Ultra Drain Plus 130 Outdoor Drain
Brand: Ultra Drain



PRODUCT CODE: G2G-UDP75SO

ULTRA DRAIN PLUS 75 SIDE OUTLET

Compatibility: Ultra Drain Plus 75 Outdoor Drain
Brand: Ultra Drain



PRODUCT CODE: G2G-UDP100SO

ULTRA DRAIN PLUS 100 SIDE OUTLET

Compatibility: Ultra Drain Plus 100 Outdoor Drain
Brand: Ultra Drain



PRODUCT CODE: G2G-UDP130SO

ULTRA DRAIN PLUS 130 SIDE OUTLET

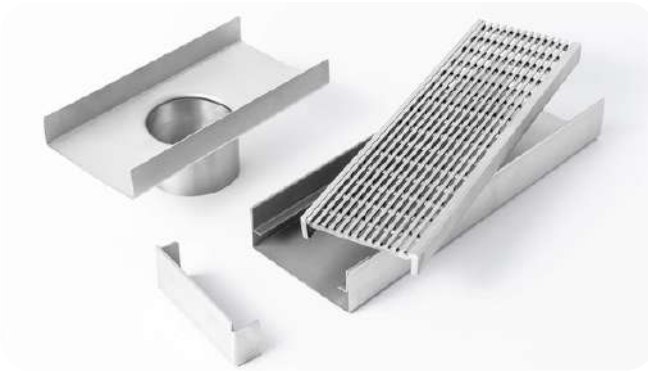
Compatibility: Ultra Drain Plus 130 Outdoor Drain
Brand: Ultra Drain



SKIMMER LID

Width: 306mm, 342mm
Depth: 33mm, 43mm
Material: 316 grade stainless steel
Brand: HIDE

STAINLESS STEEL MODULAR GRATE & CHANNEL



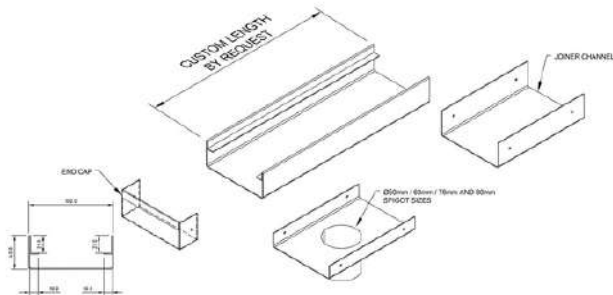
STAINLESS STEEL MODULAR KIT 100MM X 40MM

PRODUCT CODE: G2GS10040

Width: 100mm
 Depth: 40mm
 Length: Custom made to your requirements
 Outlet Sizes: 51mm, 63mm, 76mm, 85mm
 Material: 316 grade Stainless Steel
 Anti-slip option available.

Kit Contains: Wedge Wire Grate - G2GSWW10040
 Channel - G2GSC10040
 End Cap (2) - G2GSEC10040
 Joiner - G2GSJ10040

Choice of: 51mm Outlet Adaptor - G2GS10040O51
 63mm Outlet Adaptor - G2GS10040O63
 76mm Outlet Adaptor - G2GS10040O76
 85mm Outlet Adaptor - G2GS10040O85



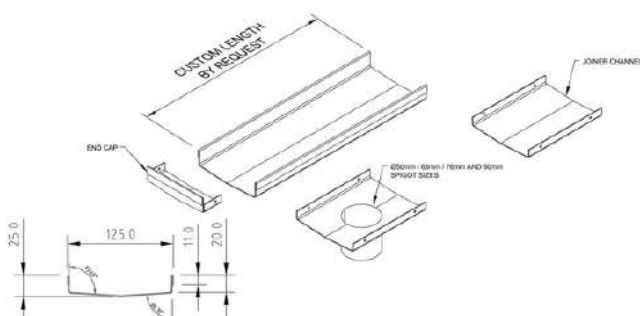
STAINLESS STEEL MODULAR KIT 125MM X 25MM

PRODUCT CODE: G2GS12525

Width: 125mm
 Depth: 25mm
 Length: Custom made to your requirements
 Outlet Sizes: 51mm, 63mm, 76mm, 85mm
 Material: 316 grade Stainless Steel
 Anti-slip option available.

Kit Contains: Wedge Wire Grate - G2GSWW125
 Channel - G2GSC125
 End Cap (2) - G2GSEC125
 Joiner - G2GSJ125

Choice Of: 51mm Outlet Adaptor - G2GS125O51
 63mm Outlet Adaptor - G2GS125O63
 76mm Outlet Adaptor - G2GS125O76
 85mm Outlet Adaptor - G2GS125O85



STAINLESS STEEL MODULAR GRATE & CHANNEL



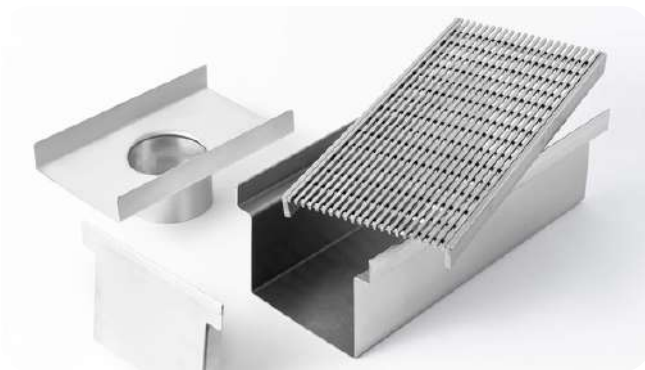
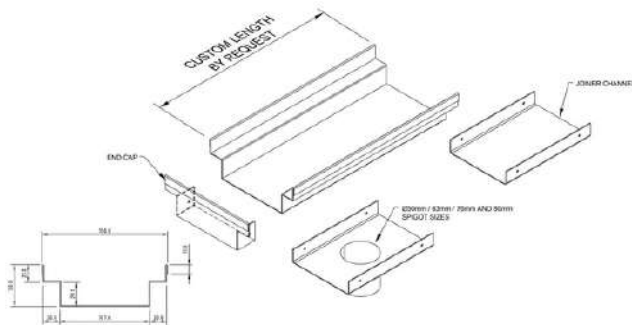
STAINLESS STEEL MODULAR KIT 150MM X 50MM

PRODUCT CODE: G2GSI5050

Width: 150mm
 Depth: 50mm
 Length: Custom made to your requirements
 Outlet Sizes: 51mm, 63mm, 76mm, 85mm
 Material: 316 grade Stainless Steel
 Anti-slip option available.

Kit Contains: Wedge Wire Grate - G2GSWW15050
 Channel - G2GSC15050
 End Cap (2) - G2GSEC15050
 Joiner - G2GSJ15050

Choice of:
 51mm Outlet Adaptor - G2GS15050O51
 63mm Outlet Adaptor - G2GS15050O63
 76mm Outlet Adaptor - G2GS15050O76
 85mm Outlet Adaptor - G2GS15050O85



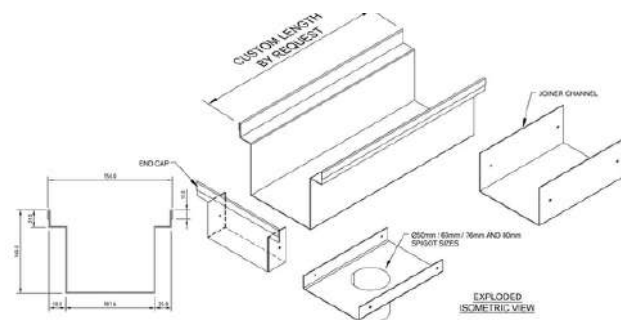
STAINLESS STEEL MODULAR KIT 150MM X 100MM

PRODUCT CODE: G2GSI50100

Width: 150mm
 Depth: 100mm
 Length: Custom made to your requirements
 Outlet Sizes: 51mm, 63mm, 76mm, 85mm
 Material: 316 grade Stainless Steel
 Anti-slip & heavy-duty options available.

Kit Contains: Wedge Wire Grate - G2GSWW150100
 Channel - G2GSC150100
 End Cap (2) - G2GSEC150100
 Joiner - G2GSJ150100

Choice of:
 51mm Outlet Adaptor - G2GS150100O51
 63mm Outlet Adaptor - G2GS150100O63
 76mm Outlet Adaptor - G2GS150100O76
 85mm Outlet Adaptor - G2GS150100O85



POLYMER CHANNEL KITS



PRODUCT CODE: PCHG-1120SS-B

POLYMER TRENCH DRAIN CHANNEL KIT 100MM X 120MM + CLASS B GRATE

Width: 100mm
Depth: 120mm
Length: 1m
Material: SS edge, 304 Stainless steel GripTech HG
Class B grate with locking mechanism



PRODUCT CODE: PCHG-1170GV-D

POLYMER TRENCH DRAIN CHANNEL KIT 100MM X 170MM + CLASS D GRATE

Width: 100mm
Depth: 170mm
Length: 1m
Material: Gal edge, Galvanised ductile iron HG
Class D grate with locking mechanism



PRODUCT CODE: PCHG-2130DI-E

POLYMER TRENCH DRAIN CHANNEL KIT 200MM X 130MM + CLASS E GRATE

Width: 200mm
Depth: 130mm
Length: 1m
Material: Ductile iron edge and HG anti slip Class E
grate with locking mechanism





At Grates 2 Go, we take pride in our expertise as custom manufacturers of top-quality stainless steel drainage channels for both domestic and commercial installations. With a dedication to precision and craftsmanship, we cut, fold, weld, and polish each drainage channel to meet our customers' specific requirements.

In the domestic realm, we specialise in creating stainless steel drainage solutions for various areas, including home bathrooms, showers, outdoor spaces like patios and pool areas, as well as driveways. Our products are not only functional but also aesthetically pleasing, enhancing the overall appeal of any residential space.

In the commercial arena, we step up to the challenge by providing wider, deeper, and heavier drains designed for public spaces and commercial buildings. Whether it's for schools, hotels, or food preparation areas, we can supply anti-slip gratings tailored to suit any drainage channel configuration, ensuring safety and durability.

Our state-of-the-art 200-ton programmable hydraulic press allows us to precisely fold the stainless steel channels into custom widths, depths, and lengths, meeting even the most complex design specifications. Our skilled team members hand-cut and weld these grates, ensuring they perfectly fit the customer's measurements and include appropriate load ratings for heavy traffic scenarios.

We understand the importance of water flow efficiency. That's why we offer various outlet sizes and install them anywhere along the drainage channel, allowing for maximum water flow and drainage performance. Our innovative custom hole punch machine ensures a flawless finish, eliminating welding and providing a visually superior appearance.

While we excel in creating standard rectangular drainage channels, we also embrace challenges, delivering round drainage channels with impeccable precision. From laser-cutting to rolling, folding, and welding, our team ensures each round drainage channel meets the required specifications for strength and durability.

Besides stainless steel, we offer drainage channels custom-made from raw brass, a popular choice for high-end premium installations. The brass patinas and ages beautifully, adding a touch of elegance to any setting. To complement various design preferences, we offer powder coating services in an array of popular colours such as Matte Black, Gunmetal, and Gold. Moreover, our extensive range of other colours allows customers to find the perfect match for their specific project.

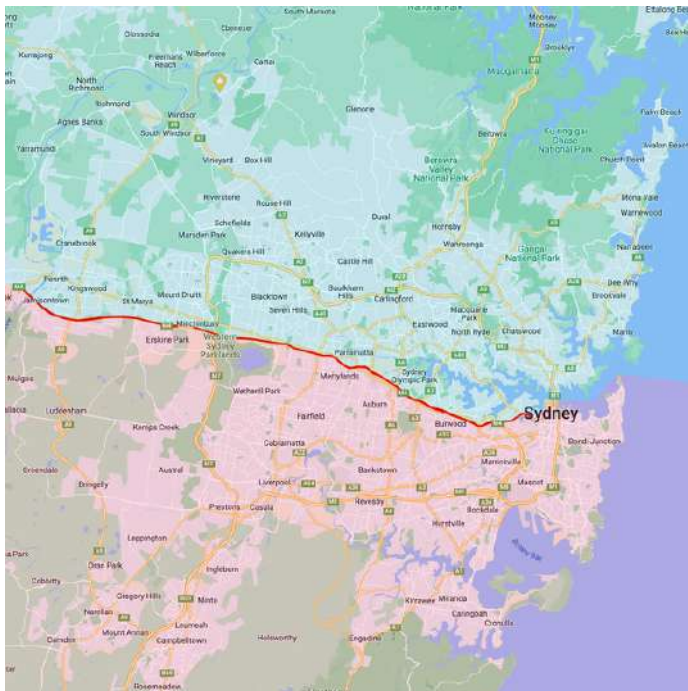
At Grates 2 Go, we take pride in our craftsmanship, attention to detail, and dedication to customer satisfaction. Our team is committed to delivering the finest stainless steel drainage solutions for every project, big or small. Partner with us for your drainage needs, and let us create a seamless flow of excellence for your spaces.



Introducing a consultation service to help you get your drainage job measured quickly and accurately. An experienced trade team member will come to your site with grate and channel samples, and all of the information you need to choose the right product for your job. Take the guesswork out of your drainage decisions.

We will assist with your drainage site measurements to ensure you always get the perfect fit. As well as on-site product presentations and measurements, our team are happy to discuss special deals on project pricing.

Brett and Barry are your specialists in Sydney and are available for free on-site consultations.



If you're north of the M4:

Brett Heather

Phone: 0400 700 778

Email: brett@grates2go.com.au

If you're south of the M4:

Barry Nakhoul

Phone: 0498 014 611

Email: barry@grates2go.com.au

Please contact Brett Heather for any interstate enquiries.

GRATES 2 GO AUSTRALIA
"THE PERFECT FIT"

Head Office & Retail Sales

Phone: (02) 4571 1530

Sales: 0400 700 778

Retail Enquiries: sales@grates2go.com.au

Account Enquiries: admin@grates2go.com.au



ABN: 40 901 425 790

www.grates2go.com.au