



QUICK USER GUIDE

En

!!! Please refer to our website: www.geemarc.com for an up to date user guide, as there may be important updates and changes you need to be aware of !!!

TABLE OF CONTENTS

IMPORTANT SAFETY INSTRUCTIONS..... 1
GETTING STARTED 2
 Package Contents 2
 Install Batteries to the Doorbell 2
REGISTRATION 2
 Registration 2
 Easy Registration for Audio Doorbell 2
USING 3
TROUBLESHOOTING..... 3
TECHNICAL SPECIFICATIONS 3
CARE AND MAINTENANCE..... 3
WARRANTY 4
DECLARATIONS1. **IMPORTANT SAFETY** 4

IMPORTANT SAFETY INSTRUCTIONS

When using your doorbell equipment, basic safety precautions should always be followed to reduce the risk of fire, electric shock and injury, including the following.

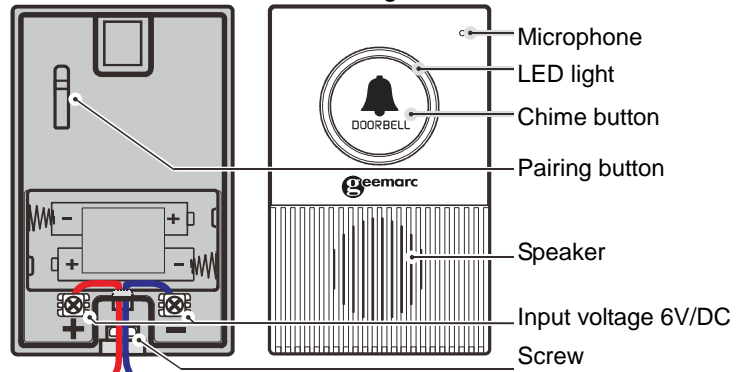
1. Read and understand all the instructions.
2. Follow all warnings and instructions marked on the product.
3. Do not use liquid cleaners or aerosol cleaners. Use a damp cloth for cleaning.
4. Do not use this product near water (for example, near a bath tub, kitchen sink, swimming pool).
5. Do not expose the product to direct sunlight or extreme cold environment. Do not put the product close to heating sources such as radiators, cookers, etc.

6. Unplug this product from the wall outlet and refer servicing to the distributor under the following conditions:
 - l If the product does not operate normally by following the operating instructions.
 - l If the product has been dropped and the cabinet has been damaged.
 - l If the product exhibits a distinct change in performance.
7. Avoid using the doorbell during an electrical storm. There may be a remote risk of electric shock from lightning.
8. Do not use the doorbell to report a gas leak in the vicinity of the leak. This does not make sense ?
9. Please note the correct polarity while inserting the batteries.
10. Do not immerse batteries in water, do not place in fire. Do you normally put this on a user guide?

GETTING STARTED

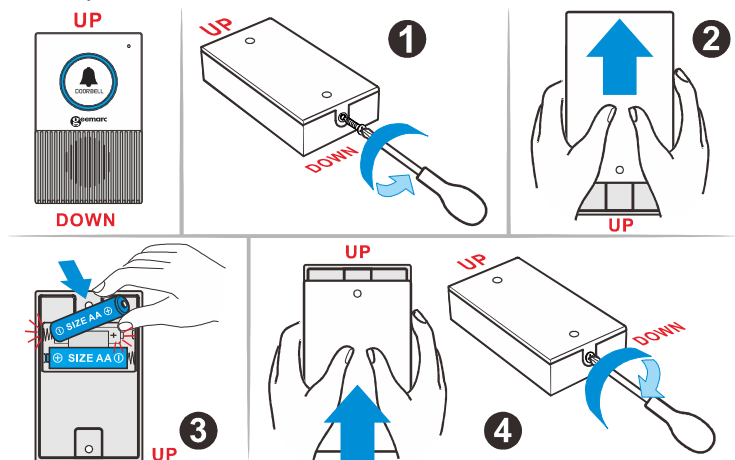
Package contents

The package contains the following items:
 Doorbell, AA batteries x 2, User guide, Screws and Anchors



Install batteries to the Doorbell

1. Remove the screw in the bottom.
2. Push to remove the wall mount cover at the back.
3. Install two AA batteries into the battery compartment, matching the polarity markings (+ and -) inside the battery compartment.
4. Push to attach the wall mount cover back to the battery compartment and insert the screw.



REGISTRATION

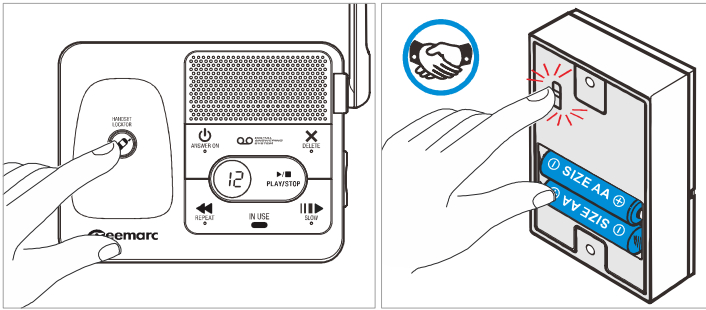
Registration

If you are buying an additional doorbell, follow the procedure in next chapter.
 If your doorbell is sold with the AMPLIDECT595 U.L.E in pack format, you do not need to register.

Easy Registration for Audio Doorbell

1. Make sure the doorbell is powered on with batteries before registering it to the telephone base.

- Press and hold**  / **Handset locator** key on the telephone AD595 ULE base until you hear a beep.
- Press and hold** the pairing button of the Audio Doorbell until the blue LED light flashes. The Audio Doorbell is now registering to the AMPLIDEDT595 U.L.E.



When the Audio Doorbell is successfully registered to the base, you will hear confirmation beeps.

Please note : The maximum number of doorbells you can have connected to the AMPLIDEDT595 U.L.E is **2**.

USING

Install the doorbell, press and check that the doorbell remote is properly connected and is within the correct range to ring the AMPLIDEDT595 U.L.E.

During the doorbell alert, press the Green button of the handset to start the communication between the handset and the remote.

TROUBLESHOOTING

If you have difficulty with your phone, please try the suggestion listed below.

Problem	Solutions
There is no LED light flashing on the doorbell when it is pressed	<ul style="list-style-type: none"> • Make sure you install two AA batteries and connect AC power supply to the doorbell. • The doorbell may have run out of battery. You may need to replace new batteries.
The doorbell doesn't work with the telephone system equipment	<ul style="list-style-type: none"> • Make sure the doorbell is registered to the telephone system. • If the previous suggestions do not work, deregister all devices and register them to the telephone base again.

TECHNICAL SPECIFICATIONS

Frequency control	Crystal controlled PLL synthesizer
Transmit frequency	1.88 GHz-1.9 GHz
Channels	10
Nominal effective range	Indoor: 50m Outdoor: 300m
RF power	< 250mW
Power requirements	AA Alkaline batteries (2)

CARE AND MAINTENANCE

Take care of your Audio Doorbell

- Your Audio Doorbell contains sophisticated electronic parts, so you must treat it with care.
- Avoid rough treatment.
- Place the Audio Doorbell down gently.
- Save the original packing materials to protect your Audio Doorbell if you ever need to ship it.

Avoid water

- You can damage your Audio Doorbell if it gets wet. Do not use the Audio Doorbell in the rain, or handle it with the wet hands. Do not install the telephone base near a sink, bathtub or shower.

Electrical storms

- Electrical storms can sometimes cause power surges harmful to electronic equipment. For your own safety, take caution when using electric appliances during storms.

Cleaning your Doorbell

- Your Audio Doorbell has a durable plastic casing that should remain in good condition for many years. Clean it only with a soft cloth slightly dampened with water or a mild soap.
- Do not use excess water or cleaning solvents of any kind.

GUARANTEE

From the moment your Geemarc Doorbell595 U.L.E is purchased, Geemarc guarantee is for the period of two years. During this time, all repairs or replacements (at our discretion) are free of charge. Should you experience a problem then contact our help line or visit our website at www.geemarc.com. The guarantee does not cover accidents, negligence or breakages to any parts. The product must not be tampered with or taken apart by anyone who is not an authorized Geemarc representative.

The Geemarc guarantee in no way limits your legal rights.

IMPORTANT: YOUR RECEIPT IS PART OF YOUR GUARANTEE AND MUST BE RETAINED AND PRODUCED IN THE EVENT OF A WARRANTY CLAIM.

Please note: The guarantee applies to the United Kingdom only.

DECLARATIONS:

CE Directives

Geemarc Telecom SA hereby declares that this Doorbell595 U.L.E is in compliance with the essential requirements and other relevant provisions of the RED 2014/53/UE.

The CE declaration of conformity may be consulted at www.geemarc.com

Recycling Directives

The WEEE (Waste Electrical and Electronic Equipment) has been put in place for the products at the end of their useful life are recycled in the best way.

When this product is finished with, please do not put it in your domestic waste bin. Please use one of the following disposal options:

- Remove the batteries and deposit them in an appropriate WEEE skip.

Deposit the product in an appropriate WEEE skip.

- Or, hand the old product to the retailer. If you purchase a new one, they should accept it.

If you respect these instructions you ensure human health and environmental protection.



For product support and help visit our website at

www.geemarc.com

2 rue Galilée, 59791 GRANDE-SYNTHÉ CEDEX, FRANCE

E-mail : help@geemarc.com

telephone **01707 387602**

lines are open 09h00 to 16h00 Mon to Fri

This product is made in China To Geemarc Telecom