

USER MANUAL

Cordless Wet Dry Vacuum Cleaner

Model: AC1 Elite

Contents

EN

Important Safety Instructions	01
Instructions For Use	03
Product Use	04
Maintenance and Cleaning	11
Troubleshooting	13
Product Specification	14

DE

Vorsichtsmaßnahmen	15
Übersicht	16
Montage	17
Wartung	24
Störungsbehebung	26
Produktspezifikationen	28

FR

Précautions d'usage	29
Informations sur votre produit	30
Utilisation de votre produit	31
Entretien de votre produit	38
Dépannage	40
Spécifications du produit	42

IT

Misure di precauzione	43
Informazioni sul prodotto	44
Utilizzo del prodotto	45
Manutenzione del prodotto	52
Risoluzione dei problemi	54
Specifiche del prodotto	56

ES

Precauciones	57
Descripción general del Producto	58
Uso del Producto	59
Mantenimiento del Producto	66
Resolución de Problemas	68
Especificaciones del Producto	70

IMPORTANT SAFETY INSTRUCTIONS

Please read the following precautions carefully before using this appliance:

- Use only indoors on non-carpeted floor surfaces such as vinyl, tile, sealed wood, etc. Be careful not to run over loose objects or carpet edges.
- Use only the battery pack and charger specified by the Ultenic. Using any other battery pack may cause personal injury and fire risk.
- Do not use your product to clean flammable or chemical products such as gasoline, strong acids, or strong alkalis; do not use WashVac AC1 Elite to pick up sharp objects such as metal nails, glass fragments, and needles.
- Do not touch the charger and the plug with wet hands.
- Do not use WashVac AC1 Elite without the filter.
- Do not use with a damaged power cable or plug. If WashVac AC1 Elite has been dropped, damaged, left outdoors, dropped into water, or failed to work properly, please contact our service center.
- Be extra careful when cleaning on the stairs.
- Keep your hair, clothing, fingers, and all parts of your body away from openings and moving parts.
- Do not use WashVac AC1 Elite when the water depth exceeds 5 mm.
- Turn off this appliance before making any adjustments, replacing accessories, or storing this appliance.
- WashVac AC1 Elite can only be used, charged, and stored in a dry room where the temperature is higher than 4°C but lower than 35°C.
- If you accidentally drop the battery, liquid may run out of the battery. Avoid touching it. If touched accidentally, rinse with water. If liquid gets into your eyes, seek medical help.
- If this appliance overheats, makes abnormal noise, produces abnormal smell or leaks, stop using it immediately.
- For long-term storage, please turn off WashVac AC1 Elite and disconnect the power from the socket.
- Be sure to clean the dirty water tank after each use to avoid clogging, which will result in poor suction, motor overheating or shortened service life of this appliance.
- All data and technical descriptions in this manual are based on test results from Ultenic laboratory tests and Ultenic reserves the right of final interpretation.

FCC Statement

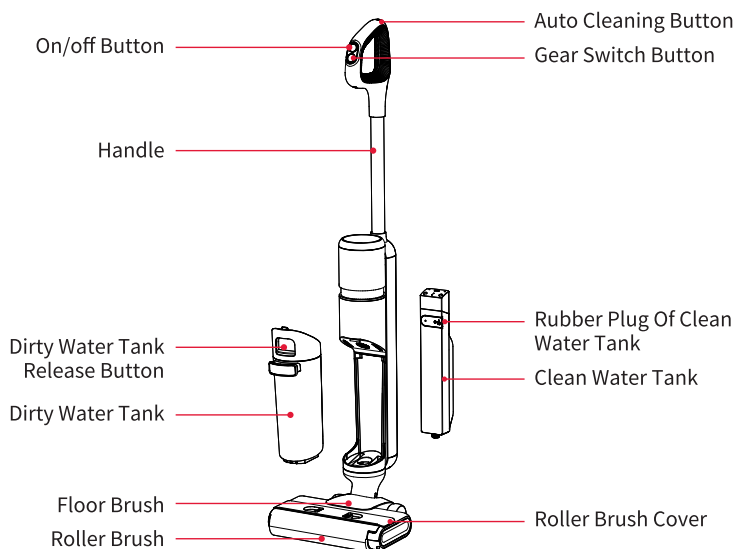
This device complies with Part 15 of the FCC Rules. Operation is subject to the following two conditions: (1) This device may not cause harmful interference, and (2) this device must accept any interference received, including interference that may cause undesired operation.

Warning: Changes or modifications not expressly approved by the party responsible for compliance could void the user's authority to operate the equipment.

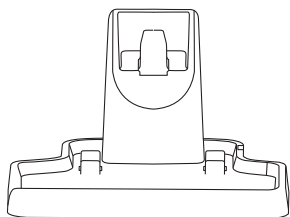
Note: This equipment has been tested and found to comply with the limits for a Class B digital device, pursuant to Part 15 of the FCC Rules. These limits are designed to provide reasonable protection against harmful interference in a residential installation. This equipment generates, uses, and can radiate radio frequency energy and, if not installed and used in accordance with the instructions, may cause harmful interference to radio communications. However, there is no guarantee that interference will not occur in a particular installation. If this equipment does cause harmful interference to radio or television reception, which can be determined by turning the equipment off and on, the user is encouraged to try to correct the interference by one or more of the following measures: (1) Reorient or relocate the receiving antenna. (2) Increase the separation between the equipment and receiver. (3) Connect the equipment into an outlet on a circuit different from that to which the receiver is connected. (4) Consult the dealer or an experienced radio/ TV technician for help.

INSTRUCTIONS FOR USE

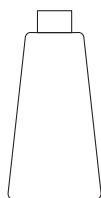
Product Structure



Accessories



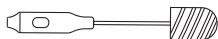
Charging Dock



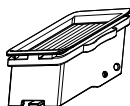
Cleaning Solution



Adapter



Cleaning Brush

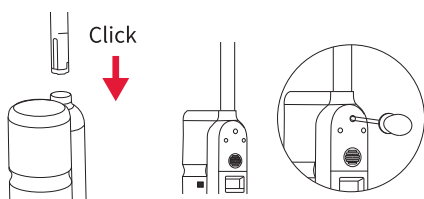


HEPA Filter

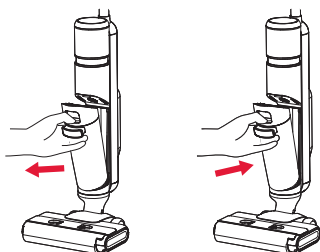
PRODUCT USE

Disassembly and Assembly Instructions of the Main Unit

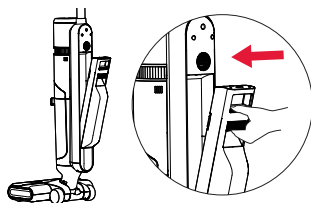
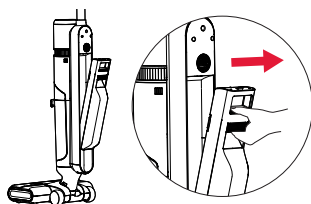
1. Insert the end of the handle into the main unit port along the direction shown in the figure, and a clicking sound is heard when the end reaches the bottom of the main unit. Moreover, keep the port flush with the schematic line of the handle to ensure that the handle is tight and not loose. At the moment, the handle is installed.
2. To disassemble the main unit, use a hard object to stretch into the hole on the back of the cleaner body and press the spring, and pull out the handle upwards.



3. Hold the handle of the dirty water tank, press the dirty water tank release button, and pull the dirty water tank outward to remove it.
4. First put the bottom of the dirty water tank into the opening support position in front of the cleaner body, gently push the dirty water tank, and the dirty water tank is installed when you hear a clicking sound.



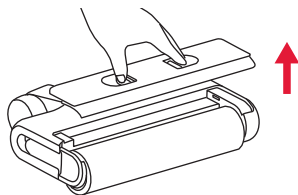
5. Hold the cleaner body with one hand and push the clean water tank button with the other hand, and then pull the clean water tank outward to take out it.
6. First put the bottom of the clean water tank into the opening position on the back of the cleaner body, gently push the clean water tank, and the clean water tank is installed when you hear a clicking sound.



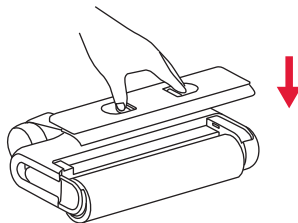
PRODUCT USE

Disassembly and Assembly Instructions of the Roller Brush Cover

1. Press the button, and pull the roller brush cover upwards to remove it.

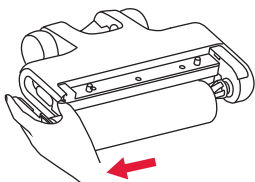


2. Align the roller brush cover with the floor brush, press it down, and the roller brush cover is installed when a clicking sound is heard.

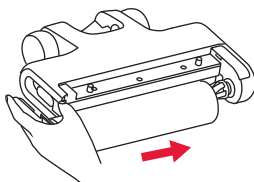


Disassembly and Assembly Instructions of the Roller Brush

1. Grasp the side handle of the roller brush, pull it outward and remove the roller brush.



2. Align the right end of the roller brush with the right end of the floor brush, push it to the right, and insert the left handle into the corresponding position. At the moment, the roller brush is installed.



PRODUCT USE

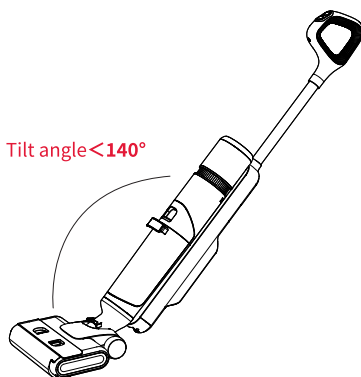
Operating Instructions

Preparation

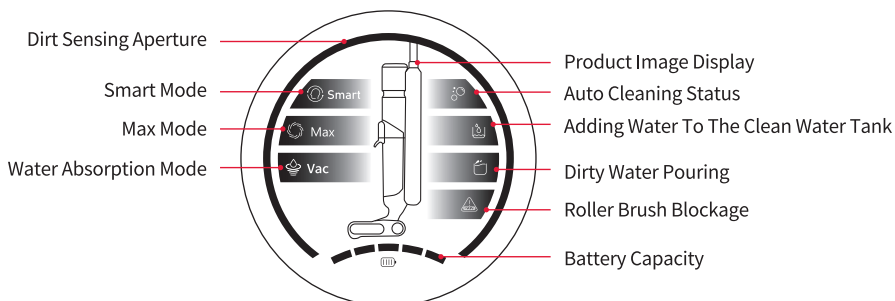
1. Before use, please check whether the cleaner is powered. If the power is insufficient, please charge it in time and use it after fully charging.
2. The Power On defaults to the smart mode, and the appropriate mode and function may be selected and switched according to the actual situation.
3. Add water to the clean water tank
 - (1) Remove the clean water tank.
 - (2) Open the rubber plug of the clean water tank and inject clean water (below 30 °C) to the water level.
 - (3) Close the clean water tank cover to ensure it is tight without looseness.
 - (4) Reinstall the clean water tank onto the cleaner body till you hear a clicking sound.

Start To Work

1. The cleaner is equipped with a vertical ON button. Please tilt the cleaner for use after startup. Do not tilt it more than 140° to avoid leakage of the wastewater tank.
2. Tilt the main unit and start the cleaner.



Main Interface Function Display



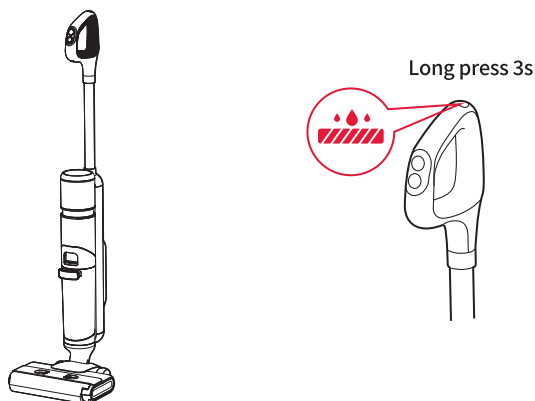
PRODUCT USE

Description	Operating Instructions
On/off Button	Press the ON/OFF button to turn the cleaner on/off.
Smart Mode	After startup, the cleaner is in the smart mode, and automatically senses the dirt on the ground and automatically adjusts the suction according to the dirt degree. The mode is suitable for daily cleaning in the home.
Max Mode	Press the gear switch button, and switch the mode to the MAX mode. The mode is suitable for removing stubborn stains and water accumulation.
Water Absorption Mode	This mode only absorbs water and is suitable for bathrooms to absorb excess water.
Auto Cleaning	In the charging state, press the Auto Cleaning button, and the cleaner will automatically clean the roller brush and pipeline.
Low Battery Reminder	If the battery capacity is less than 20%, the red aperture light above the "battery capacity" of the battery pack will flash. It is recommended to put the cleaner back into the charging dock for charging.
Dirty Water Pouring Reminder	If the dirty water tank is full of dirty water, the dirty water tank indicator light of the cleaner will flash, and the cleaner will automatically shut down. Please pour the dirty water, reinstall the dirty water tank onto the cleaner, and then start the cleaner.
Water Adding Reminder	If the water in the clear water tank is used up, the clean water tank indicator light of the cleaner will flash. Please shut down the cleaner and take down the clear water tank to add clear water. Reinstall the clear water tank onto the cleaner before starting the cleaner.
Roller Brush Cleaning Reminder	If the roller brush is wound by hair and other objects, the floor brush indicator light of the cleaner will flash, and the cleaner will automatically shut down. Please remove the roller brush and clean it. Then reinstall the roller brush and the roller brush cover before starting the cleaner.

PRODUCT USE

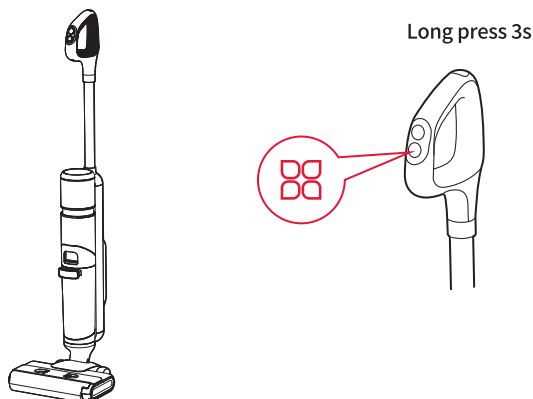
Voice off & on

Requirement: The machine has to be in upright standby before the voice can be turned off or on.
Machine power on default is the voice on state, long press the self-cleaning button 3s, you can turn off or on the voice.



Language Switch

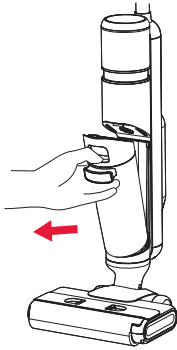
Requirement: The machine has to be in upright standby before the language can be switched.
Long press the gear switching button for 3s to trigger the voice switching function, then the voice announces the current language name, such as "English", all lights on the display breathe, then short press the function switching button to switch the language (switching order: English, German, French, Italian, Spanish)



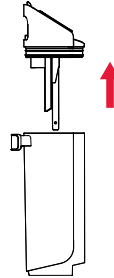
PRODUCT USE

Dirty Water Pouring

1. Gently press the dirty water tank release button to remove dirty water tank.

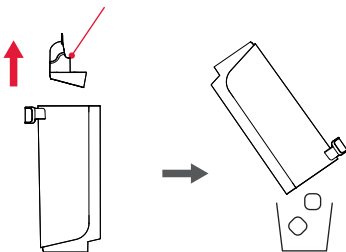


2. Hold the tank body with one hand and pull out the dirty water tank upwards with the other hand.

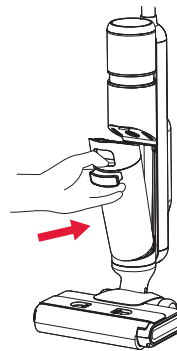


3. Take out the solid-liquid separator, pour the solid waste into the trash can and pour out the dirty water.

Solid-liquid separator



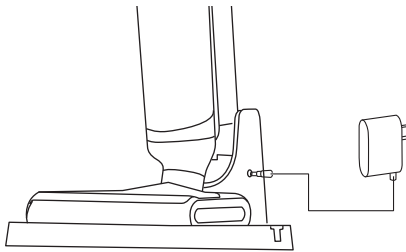
4. Reinstall the dirty water tank onto the cleaner in place after hearing a clicking sound.



PRODUCT USE

Product Charging

1. After use, place the cleaner vertically on the charging station, insert one end of the adapter into the charging dock, and connect the other end to a socket in the home. During charging, keep the cleaner upright and close to the toe of the wall to avoid tripping and other injuries.
2. The power indicator flashes during charging.
3. After the charging is completed, the power indicator is always on and will go out after 5 minutes.



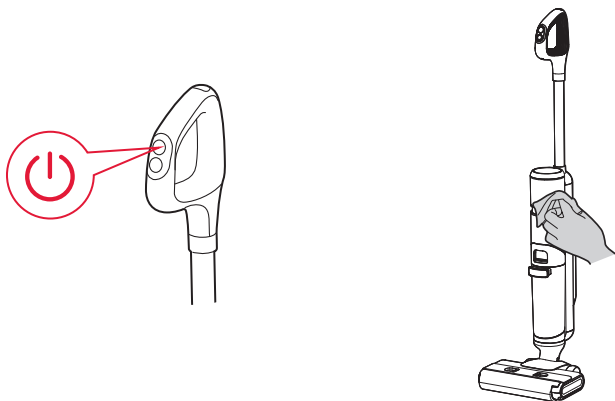
Reminders:

1. Generally, 10-50% of the battery capacity is reserved when the product leaves the factory. It is recommended to fully charge the product when using it for the first time to ensure the effect and duration of use.
2. Please fully charge the battery before use if it has not been fully charged for a long time.
3. It takes 4 hours for the battery to be fully charged at room temperature. The actual charging time varies depending on the ambient temperature and voltage.
4. After fully charged, if there is no other operation, the cleaner will automatically shut down and all indicator lights will be off.
5. If the product is not used for a long time after purchase, please use the special charging dock provided by us to charge the battery for 3 hours every 3 months (without full charging).

MAINTENANCE AND CLEANING

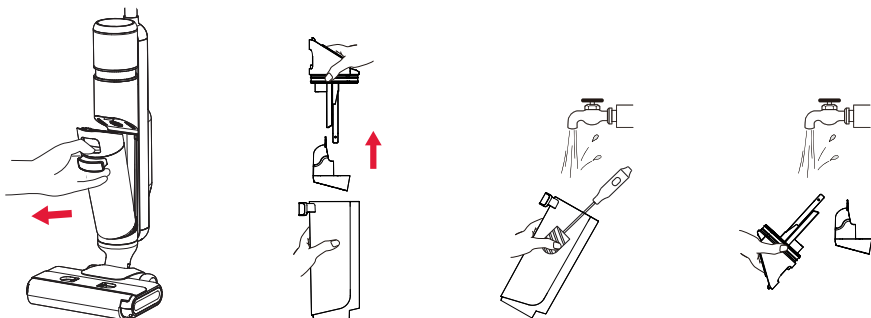
Clean the Body

1. Before cleaning, make sure that the machine is powered off.
2. Wipe the body with water or neutral detergent. Before wiping, be sure to wring the cleaning cloth dry, and do not let water flow into the machine.



Clean the Dirty Water Tank

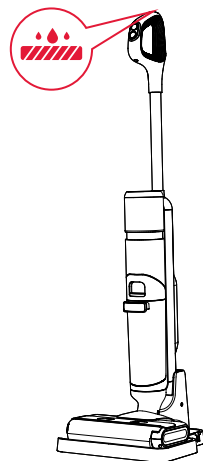
1. When the dirty water tank is full or the machine is shut down, remove the dirty water tank.
2. Remove the dirty water from the dirty water tank and wash the dirty water tank with clean water.
3. Wash the dirty water tank cover, HEPA and solid-liquid separator.
4. After the dirty water tank cover and the HEPA are dried, assemble them and put them back into the machine.



MAINTENANCE AND CLEANING

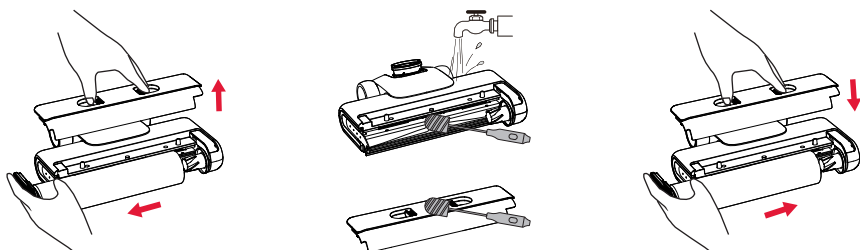
Auto Cleaning

1. Please put the machine back to the base in time after use.
2. Make sure that the water volume of the clean water tank exceeds the auto cleaning minimum water level, and the dirty water tank has no dirty water. Then press the auto cleaning button, and the machine will start auto cleaning.
3. After auto cleaning, please clean the dirty water tank and dry the roller brush and HEPA in the air.



Clean the suction port of the floor brush and the roller brush cover

1. Clean the suction port of the floor brush with a cleaning brush.
2. Clean the roller brush cover with a cleaning brush.
3. After cleaning, reinstall the roller brush and its cover onto the machine.



Tips for Use

1. It is recommended to clean the roller brush, roller brush cover, suction port and pipeline regularly.
2. After the heavy oil stains are removed by the roller brush, it is recommended to start the auto cleaning function many times to clean the roller brush and pipeline. You can also take down the roller brush after auto cleaning and soak or wash the roller brush with warm water.

TROUBLESHOOTING

Problem	Possible Cause	Solution
Poor running of roller brush	The roller brush is blocked	Please clean the roller brush
	The roller brush is worn	Please contact the authorized after-sales service center to replace the roller brush
	The drive belt is worn	Please contact the authorized after-sales service center to replace the drive belt
Abnormal operation of the vacuum cleaner	The roller brush, roller brush cover and dirty water tank are not installed in place	Please reinstall them
	The suction port or pipe is blocked	Please clean the suction port or pipe
	The dirty water tank has the specified capacity	Please take out the dirty water tank to pour out wastewater
	The filter port above the dirty water sensor is dirty	Please clean the filter port
	The HEPA is dirty or missing	Please clean or install the HEPA
	The roller brush is entangled by objects such as hair	Please clean the roller brush
Abnormal noise when the machine is running	The dirty water tank has the specified capacity	Please take out the dirty water tank to pour out wastewater
	The suction port is blocked	Please clean the suction port
	The floor brush is not installed in place	Please reinstall the floor brush
No water comes out when the machine is working	Water shortage in the clean water tank	Add water to the clean water tank
	The clean water tank is not installed in place	Please reinstall it

TROUBLESHOOTING

The roller brush automatically stops working	The floor brush protection device is running	Please check whether there is any foreign matter hindering the operation of the roller brush. Remove the foreign matter and reinstall it before use
Air outlet leakage	The HEPA is not dried after cleaning	Please dry the HEPA
	The HEPA is not installed	Please install the HEPA
Water leakage at the bottom of the roller brush	The dirty water tank or HEPA is not installed	Please install the dirty water tank or HEPA
	The water pump is damaged	Please contact the authorized after-sales service center to replace the water pump
Auto cleaning fails to start	The machine is not correctly placed in the charging dock	Please correctly place the machine to the charging dock and correctly connect the adapter
Clean water tank leakage	The clean water tank is damaged	Please contact the authorized after-sales service center to replace the clean water tank
No voice function	The voice function is turned off	Press and hold the gear switch key for 3 seconds in the Power On state
	The horn is damaged	Please contact the authorized after-sales service center to repair the horn
The display is not lit and there is no display	The display is damaged	Please contact the authorized after-sales service center to repair the display

PRODUCT SPECIFICATION

Product Model	AC1 Elite
Charging Input	100-240V~50/60Hz
Voltage and Electric Quantity	28.8V, 2500mAh

Rated Power	230W
CWT	0.65L
DWT	0.5L