



SONANCE®

Sonance Landscape Series

The standard for outdoor audio

Immersive sound that disappears into its surroundings

Entertaining and relaxing to music in the great outdoors has been redefined.

Introducing Sonance Landscape Series; a totally scalable outdoor speaker system that delivers perfectly-even coverage and unbelievable audio performance throughout any sized space.

Sonance Landscape Series fully immerses yards in perfectly balanced sound by strategically placing satellite speakers and buried subwoofers around the perimeter while being hidden amongst the landscape. The result is breathtaking performance and a perfect blanket of audio that does not disturb the neighbors.

Sonance DSP amplifiers complete the Sonance Landscape Series system by refining the audio performance to adapt to any space's hardscape, landscape, topography, and scale. This ensures the Sonance Landscape Series system delivers unrivaled audiophile clarity.

From courtyards and patios to entire residential estates or resort gardens, Sonance Landscape Series is the undisputed leader in high fidelity sound for the great outdoors.



A traditional approach

Traditional Speaker Placement

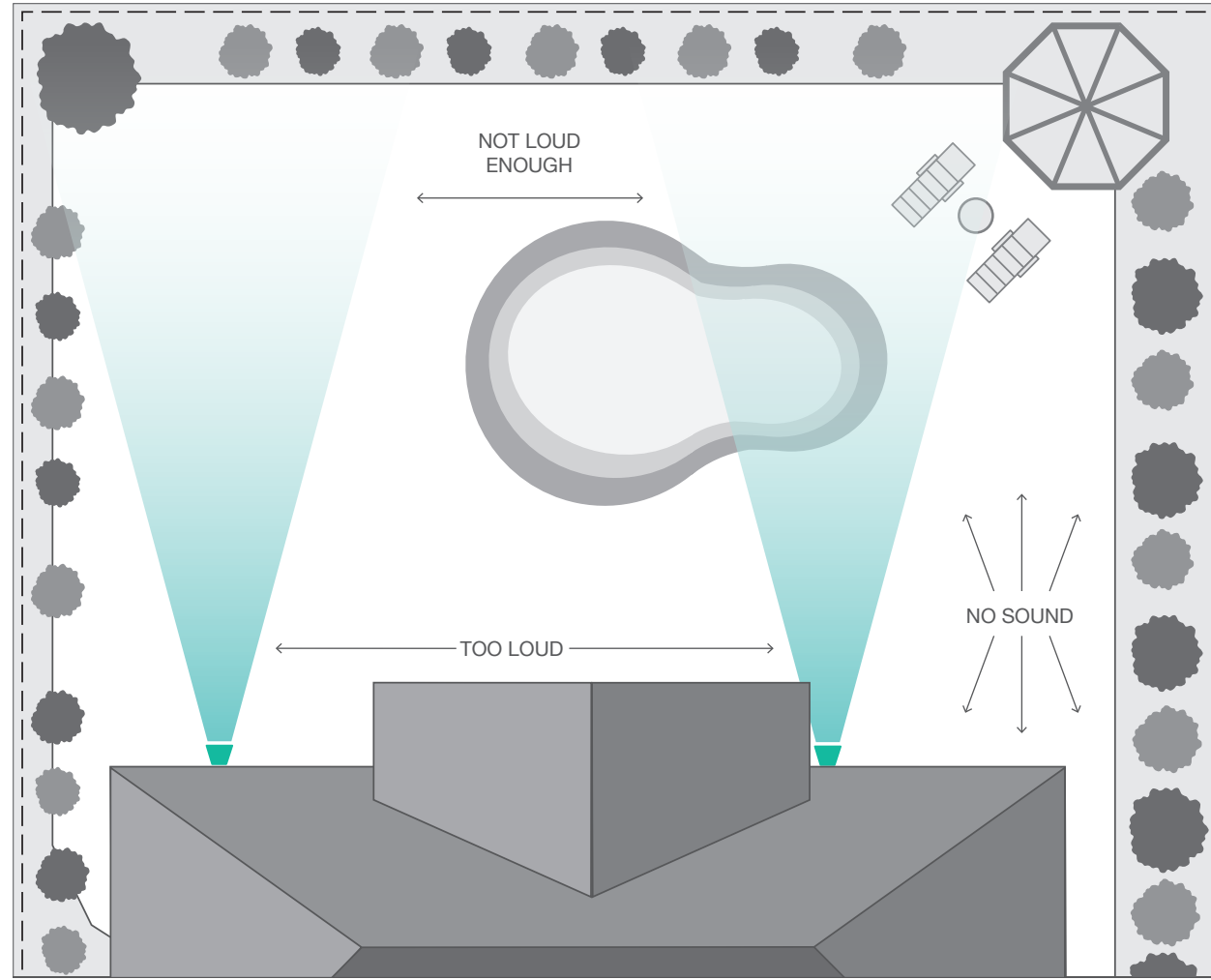
The basics

In typical outdoor audio installations a pair of speakers are placed in one location and usually on the same plane. The result can produce various undesirable effects:

Uneven volume

Speaker placement in one location creates very loud areas near those speakers and little to no sound further away. This can impact furniture arrangements and natural gathering areas.

 Traditional Speaker



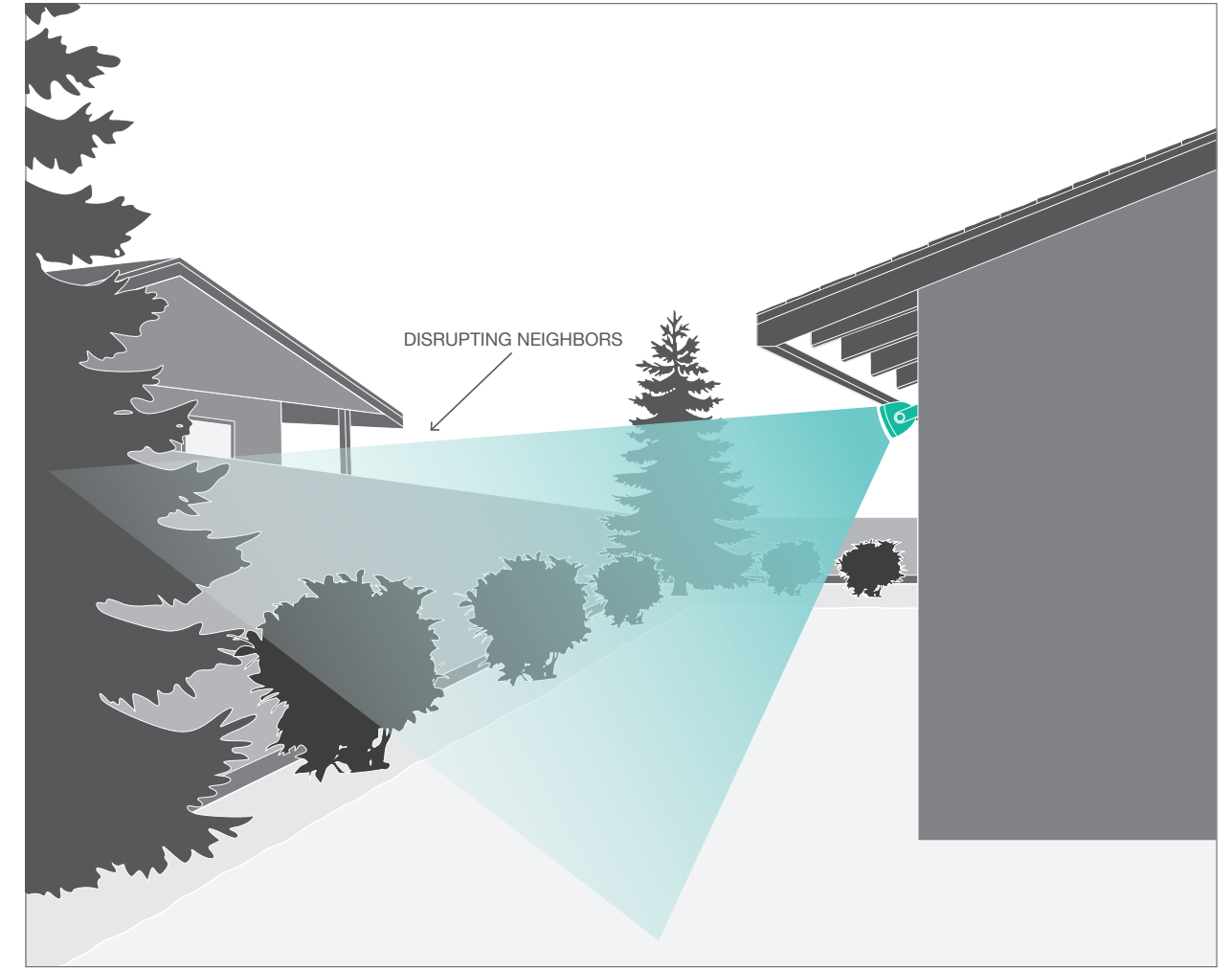
Unbalanced coverage

It is easy to move in and out of the left and right channels and miss discrete information in the audio.

Unwanted noise

Audio can spill over to neighboring properties creating unwanted disturbances.

 Traditional Speaker



A systems approach

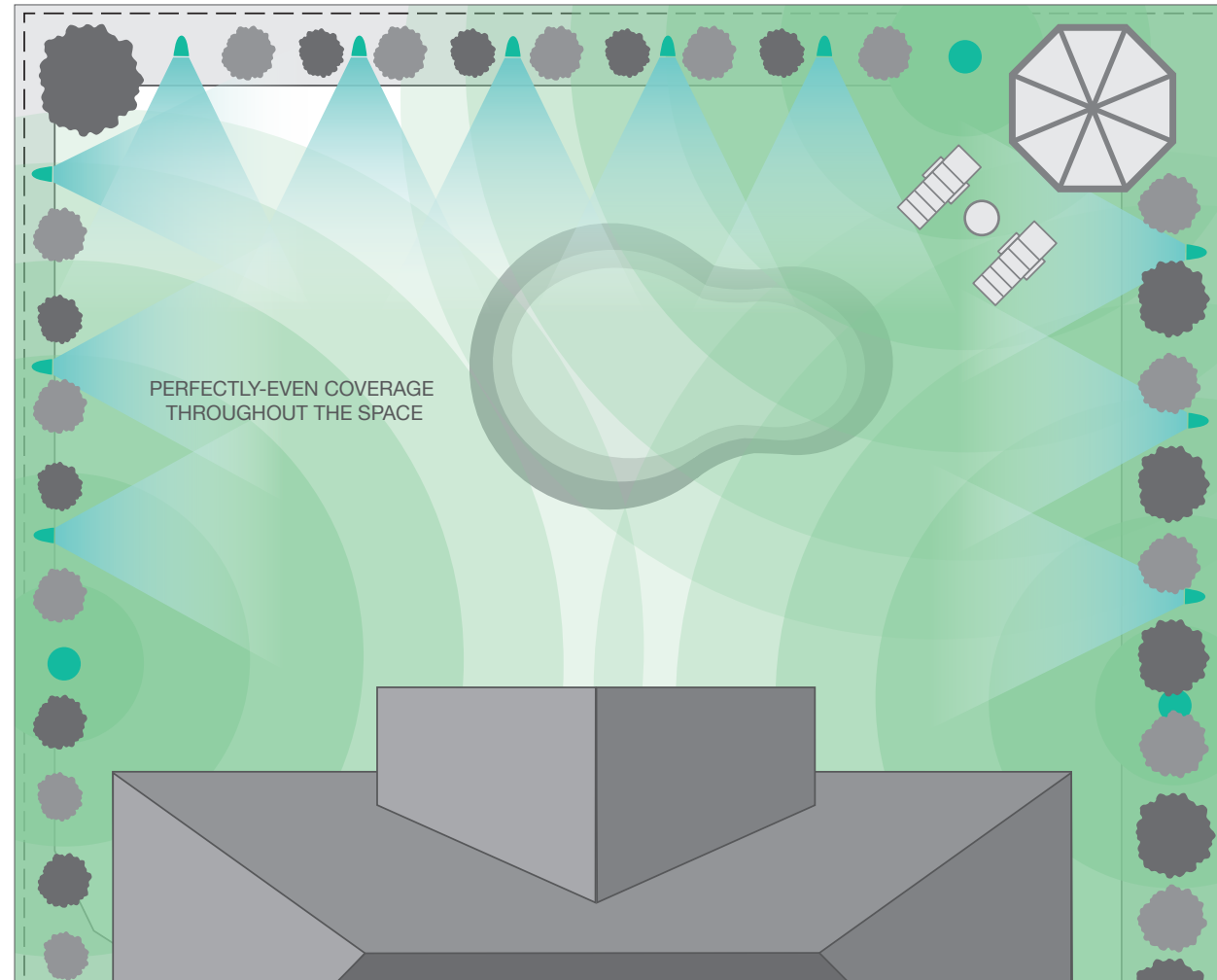
Sonance Speaker Placement

A case for systems

Creating a system composed of satellite speakers, subwoofers, amplifiers, and DSP envelops a space fully in clear and balanced audio.

Even volume

This approach is similar to a well layered lighting design that has no hot spots or dark spots, but rather provides smooth even coverage throughout the area.



 Satellite Speaker

 Subwoofer

Sound from everywhere

The Sonance Landscape Series system uses small satellite speakers and subwoofers perfectly arranged around the perimeter of the property. The outcome is positioned audio that comes from below, above, front, and behind.

No disturbances

SLS system is positioned not to spill into surrounding properties. Paired with Sonance DSP amplifiers, preloaded with over 40 DSP presets, SLS system sounds perfect in any terrain.

 Satellite Speaker

 Subwoofer



The new landscape of outdoor audio

All around you

The Sonance Landscape Series system provides a superior landscape aesthetic enabling camouflaged speakers to evenly immerse a space with extraordinary sonic stereo performance.



Satellites can be positioned in trees, hidden in planting beds, or along walkways to direct sound wherever needed.



Below-ground subwoofers provide superior bass while seamlessly blending into the landscape environment. Subwoofers feature a tuned port for deep, powerful, tight bass.

Bringing it all together

The last piece of the Sonance Landscape Series system is the DSP 2-750 amplifier featuring SONARC (Sonance Advanced Room Correction) software. With hundreds of presets designed for Sonance Landscape Series, and tested for any environment, the DSP 2-750 perfectly tunes and balances the Sonance Landscape Series system.



 +  +  + **DSP = SYSTEM**



LS47SAT

Two-way
loud speaker



LS48SAT

Two-way
loud speaker



LS68SAT

Two-way
loud speaker



LS48SAT8

8 Ohm Two-way
loud speaker



HS10SUB

Above ground subwoofer
for hardscape applications



LS10SUB

In-ground subwoofer



LSV10SUB

In-ground subwoofer



LS12ESUB

In-ground subwoofer



SR1SUB

8 Ohm In-ground
subwoofer

A new perennial for your landscape

Sonance Landscape Series speakers are constructed from a dark brown composite that won't corrode or flake over time. The all-weather design ensures years of reliable service, while the color-molded construction resists chipping and scratches, even if accidentally hit with garden tools. Sonance Landscape Series components are designed to operate under the most extreme

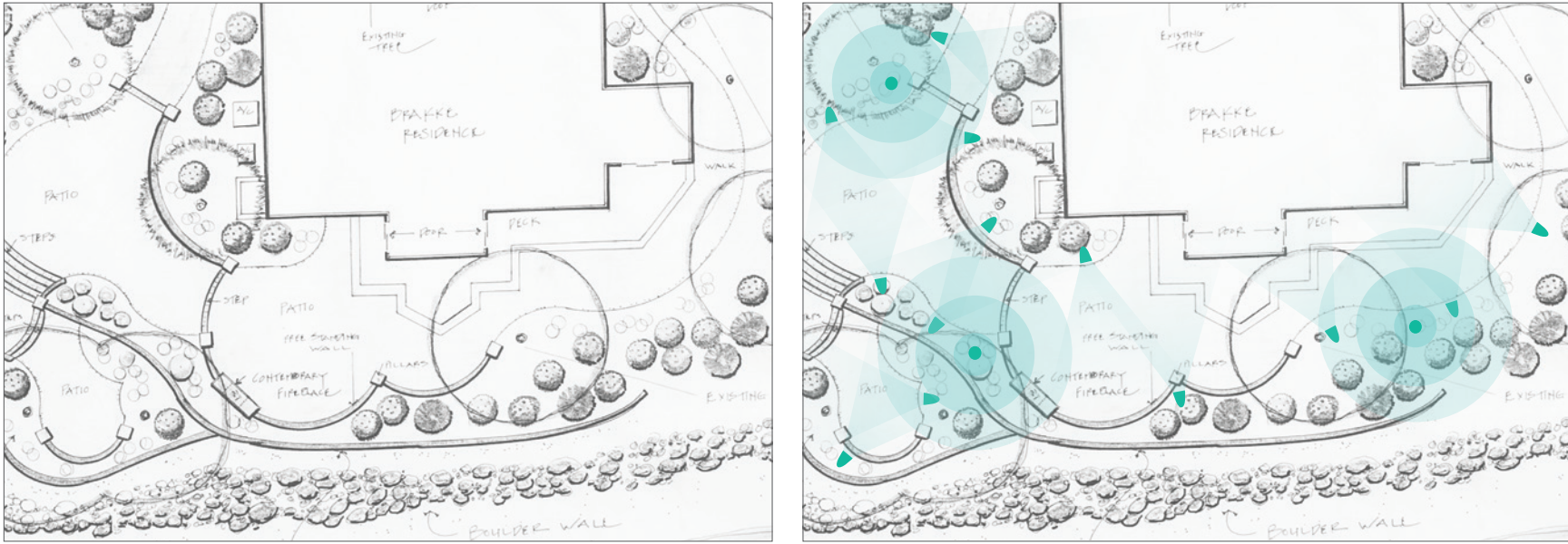
weather conditions, from -20° to 190° F (-29° to 88° C). Triple sealed enclosures, waterproof connectors and marine grade components ensure Sonance Landscape Series will stand up to the harshest elements Mother Nature dishes up, including surf, sun, sand and snow. It is this quality and durability that will guarantee years of reliable entertainment.



Design services

Customized layouts

Design Services from Sonance provide a custom layout program for Landscape Series speaker systems. This complimentary service will convert any project's Landscape Plan into a discrete layout for each zone showing the best possible placement for all of the Satellites and Subwoofers.



The details



LS47SAT

Tweeter Diameter: 3/4" (19mm) PEI dome
 Woofer Diameter: 3 1/2" (89mm)
 Frequency Response: 80Hz - 20kHz ±3dB
 Transformer: 70V / 25 Watts
 Listening Area: 60° coverage,
 10' - 50' distance
 Shipping Weight: 2.9 lbs (1.32kg)



LS48SAT

Tweeter Diameter: 1/2" (13mm) PEI dome
 Woofer Diameter: 3 1/2" (89mm)
 Frequency Response: 80Hz - 20kHz ±3dB
 Transformer: 70V / 40 Watts
 Listening Area: 60° coverage,
 10' - 60' distance
 Shipping Weight: 3.85 lbs (1.75kg)



LS68SAT

Tweeter Diameter: 1/2" (13mm) PEI dome
 Woofer Diameter: 6" (152mm)
 Frequency Response: 60Hz - 20kHz ±3dB
 Transformer: 70V / 50 Watts
 Listening Area: 60° coverage,
 10' - 60' distance
 Shipping Weight: 7 lbs (3.17kg)



HS10SUB

Woofer Diameter: 10" (254mm)
 Frequency Response: 35Hz - 100Hz
 ±3dB
 Transformer: 70V / 100 Watts
 Shipping Weight: 42 lbs (19kg)



LS10SUB

Woofer Diameter: 10" (254mm)
 Frequency Response: 35Hz - 100Hz
 ±3dB
 Transformer: 70V / 100 Watts
 Shipping Weight: 54 lbs (24.5kg)



LSV10SUB

Woofer Diameter: 10" (254mm)
 Frequency Response: 35Hz - 100Hz
 ±3dB
 Transformer: 70V / 300 Watts
 Shipping Weight: 46.3 lbs (21kg)



LS12ESUB

Woofer Diameter: 12" (305mm)
 Frequency Response: 25Hz - 100Hz
 ±3dB
 Transformer: 70V / 300 Watts
 Shipping Weight: 19 lbs (8.6kg)



19" Ground Stake for LS68SAT

Dimensions: 19" (482mm)



9" Ground Stake for LS47SAT & LS48SAT

Dimensions: 9" (228mm)



Surface Mount for LS47SAT, LS48SAT & LS68SAT

Dimensions: 2 7/8" Dia. (73mm)



Tree Mount for LS47SAT, LS48SAT & LS68SAT

8 Ohm



LS48SAT8

Tweeter Diameter: 1/2" (13mm) PEI dome
 Woofer Diameter: 3 1/2" (89mm)
 Frequency Response: 80Hz - 20kHz ±3dB
 Power Handling: 40 Watts
 Listening Area: 60° coverage,
 10' - 60' distance
 Shipping Weight: 2.43 lbs (1.10kg)



SR1SUB

Woofer Diameter: 8" (203mm)
 Frequency Response: 40Hz - 100Hz
 ±3dB
 Power Handling: 150 Watts
 Shipping Weight: 30 lbs (14kg)



DSP 2-150 (8 Ohm)

Output Power: 70V / 150 Watts RMS per channel (all channels driven)
 Frequency Response: 5Hz - 50kHz
 Dimensions with Feet: 8 5/8" x 2 1/8" x 16 13/16"
 (219mm x 54mm x 427mm)
 Dimensions No Feet: 19" x 1 3/4" x 16 13/16"
 (482mm x 44mm x 427mm)
 Shipping Weight: 11 lbs (5kg)



DSP 2-750

Output Power: 70V / 750 Watts RMS per channel (all channels driven)
 Frequency Response: 5Hz - 50kHz
 Dimensions with Feet: 17 1/4" x 3 7/8" x 17 7/32"
 (438mm x 98mm x 437mm)
 Dimensions No Feet: 19" x 3 1/2" x 17 7/32"
 (482mm x 88mm x 437mm)
 Shipping Weight: 23.3 lbs (10.6kg)

Amplifiers