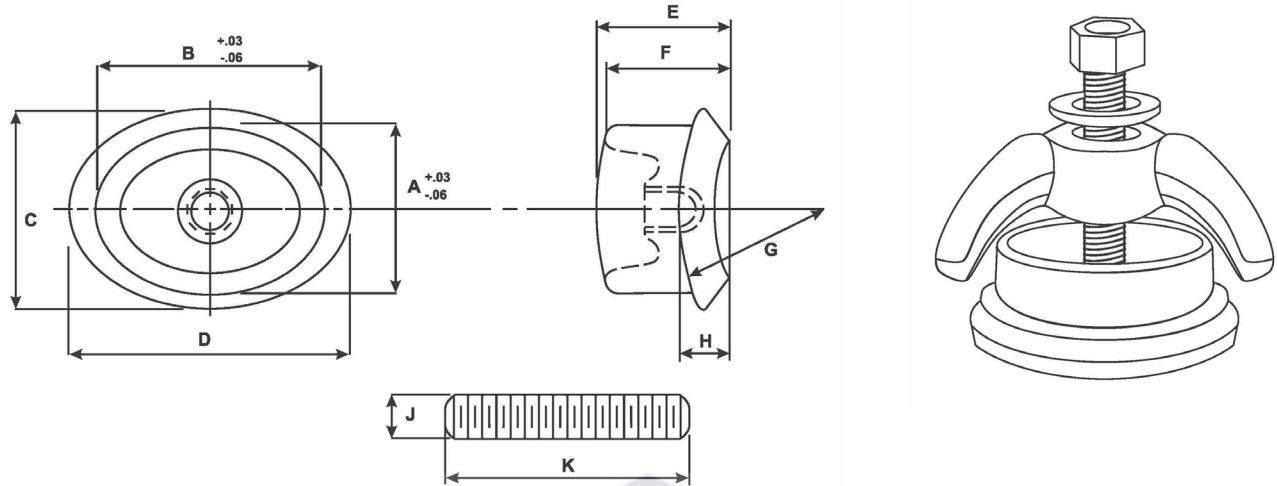




Seal Weld Handhole Cover PHHD4300C, PHHD4301C



DIMENSION CHART

| SIZE | SKU | A | B | C | D | E | F | G | H | J | K |
|-----------------------|-----------|----------|----------|--------|--------|----------|---------|----|--------|------|--------|
| 3" x 4" Plate Only | PHHD4300C | 3" | 4" | 3-1/2" | 5" | 2-11/32" | 2-5/32" | 5" | 7/8" | 3/4" | 4" |
| 3 1/2" x 4 1/2" | PHHD4301C | 3-15/32" | 4-15/32" | 4-1/8" | 5-1/2" | 2-11/2" | 2-5/32" | 8" | 31/32" | 7/8" | 4-1/2" |

KEY FEATURES:

PHHD4300

- 5" Radius Minor Access
- Carbon Steel ASME SA-105
- Design eliminates the need for back-face machining. Handhold cover seats in the headers.

PHHD4301

- 8" Radius Minor Access
- Carbon Steel ASME SA-105
- Design eliminates the need for back-face machining. Handhold cover seats in the headers.

Seal Weld Cover Design Standards

| COVER NO. | SIZE | RADIUS MINOR AXIS | HEADER | WALL THICKNESS | PIPE SCHEDULE |
|-----------|-----------------|-------------------|------------|----------------|---------------|
| D-4300 | 3" X 4" | 5" | 8" I.P.S. | .718 | 120 |
| D-4300 | 3" X 4" | 5" | 10" I.P.S. | .843 | 120 |
| D-4300 | 3" X 4" | 5" | 10" I.P.S. | 1.125 | 160 |
| D-4300 | 3" X 4" | 5" | 12" I.P.S. | 1.00 | 120 |
| D-4301 | 3-1/2" X 4-1/2" | 8" | 14" O.D. | .937 | 100 |
| D-4301 | 3-1/2" X 4-1/2" | 8" | 18" O.D. | .750 | 60 |
| D-4301 | 3-1/2" X 4-1/2" | 8" | 18" O.D. | 1.156 | 100 |



718-620-1400



info@oswaldsupply.com



725 Whitier St.
Bronx, NY 10474
www.oswaldsupply.com