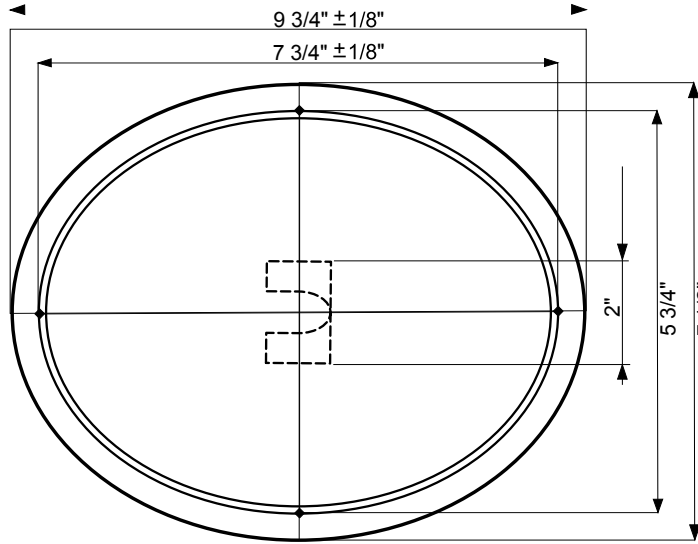
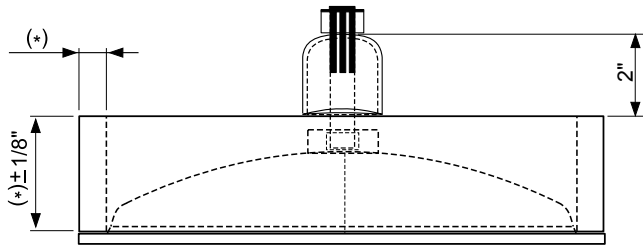


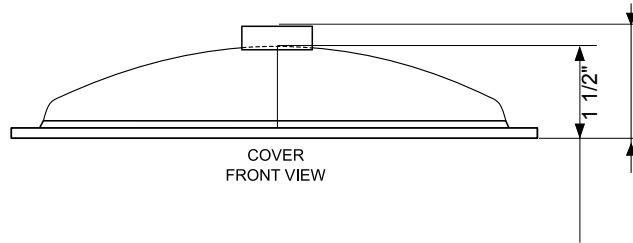
MANHOLE ASSM
TOP VIEW



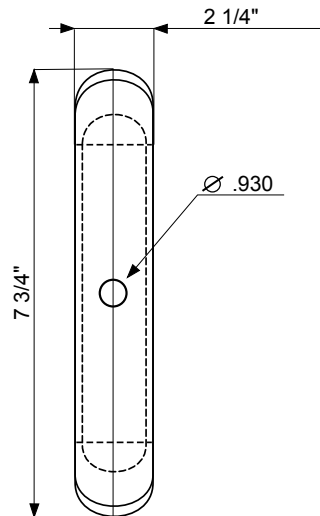
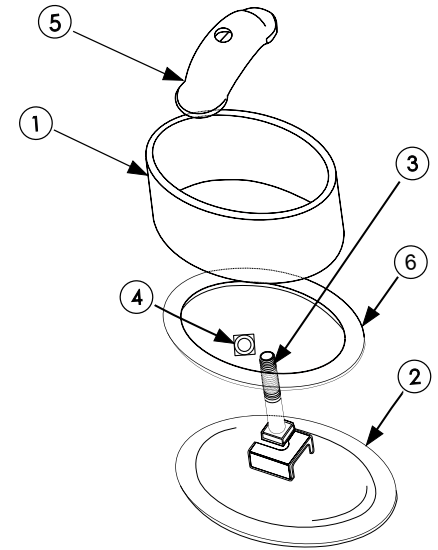
COVER
TOP VIEW



MANHOLE ASSM
FRONT VIEW



COVER
FRONT VIEW



#	DESCRIPTION		STEEL	QTY.
1	RING	(*)	SA 106 B/C	1
2	COVER 700psi	(*)	.3125 SA-516-70	1
3	SQ BOLT 7/8-9X	(*)	ASTM307	1
4	HSQ NUT		ASTM A563	1
5	CRAB 6X8 (CRAB/YOKE)		.188" HRC	1
6	NEOPRENE GASKET 6X8 x0.1875	(*)		1

6X8 RING OPTIONS

THICKNESS	HEIGHT
(*) 1/2"X	(*) 2"~3"~4"~6"~
(*) 3/4"X	(*) 2"~3"~4"~6"~

(*) OTHER GASKETS AVAILABLE

(*) OTHER RINGS AVAILABLE - SA312T-304/304L, SA312T-316/316L

(*) 1" LONGER THAN RING DEPTH

THESE ARE NOT PRECISION FORMED PARTS.
PLEASE ALLOW FOR NORMAL FORMING TOLERANCES.