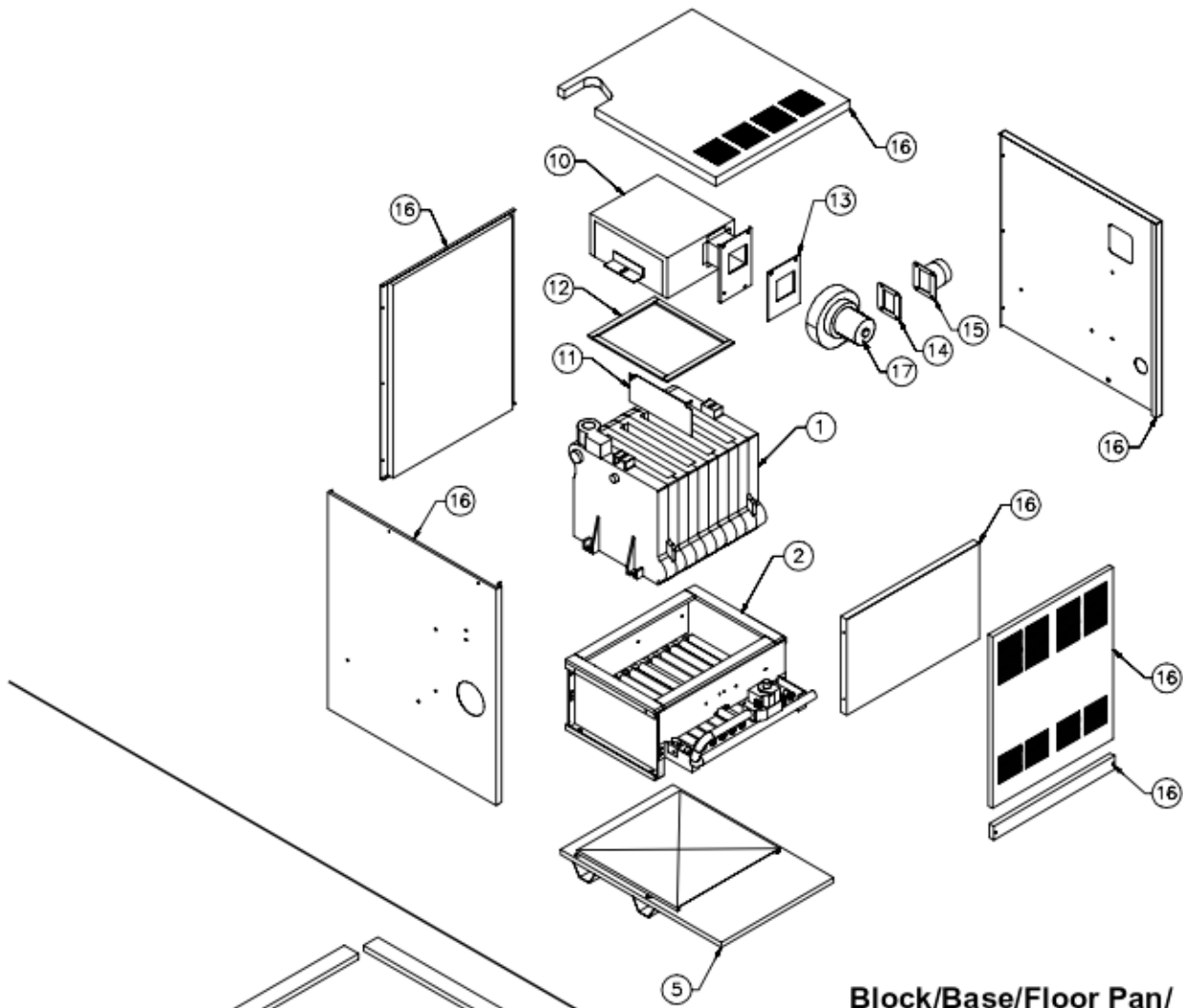
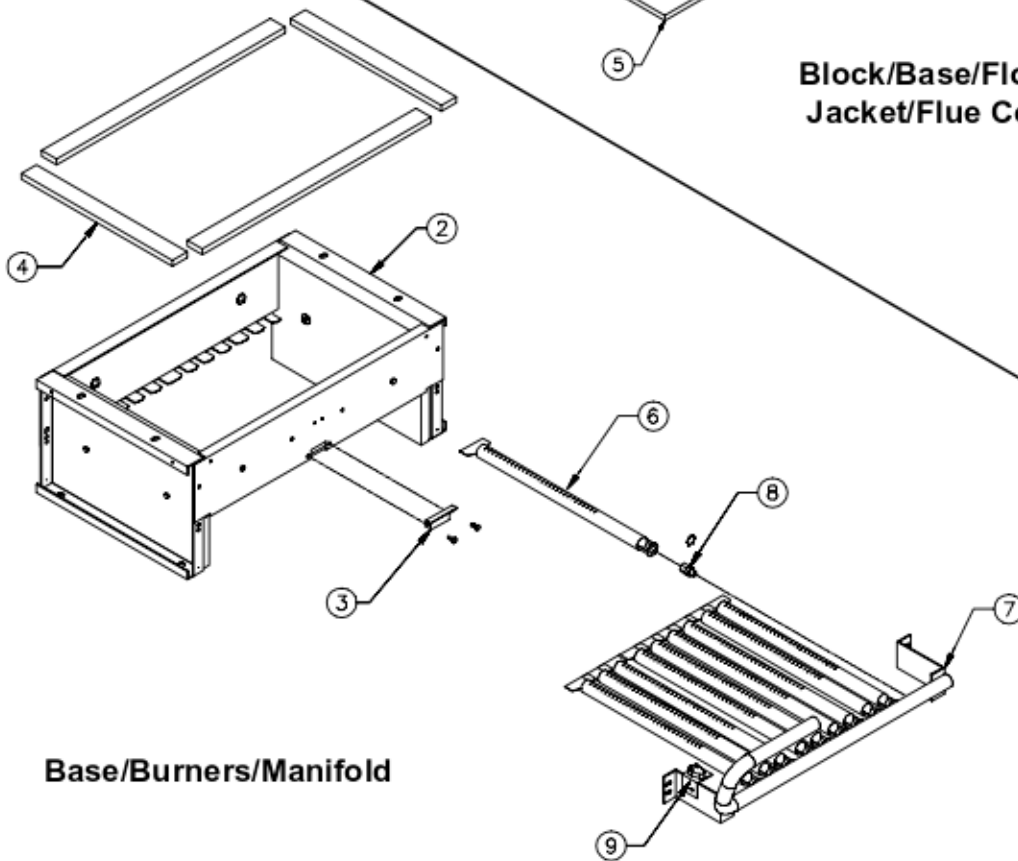


# GVX Series

## GVX SERIES REPLACEMENT PARTS



**Block/Base/Floor Pan/  
Jacket/Flue Collector**



**Base/Burners/Manifold**

# GVX Series

## GVX SERIES REPLACEMENT PARTS

Ref #	Name of Part	Part No.	Boiler Size			
			70	105	140	165
1	Block Assembly	90419	1			
		90420		1		
		90421			1	
		90422				1
2	Base Assembly	7800	1			
		7801		1		
		7802			1	
		7803				1
3	Observation Cover Door	51771	1	1	1	1
4	Base Blanket Seal (Specify Length)	50867	4'	5'	6'	6'
5	Non-Combustible Floor Pan Assembly	90700	1			
		90701		1		
		90702			1	
		90703				1
6	Steel Burner	51537				
	Steel Burner w/Pilot Clip	51539	1	1	1	1
7	Gas Manifold	50978PB	1			
	Gas Manifold	50979PB		1		
	Gas Manifold	50980			1	
	Gas Manifold	50981				1
8	Orifice #48 Natural Gas	50894	1	1	1	1
	Orifice #49 Natural Gas	50895	1	1	1	1
	Orifice #56 LP Gas	50899	1	1	1	1
9	Flame Roll-Out Safety Shut-Off Switch	51587	1	1	1	1
10	Flue Collector/Fan Mount	90195	1			
		90196		1		
		90197			1	
		90198				1
12	Flue Collector Blanket Seal	50866	3'	4'	5'	6'
13	Fan Gasket	50204PB	1	1	1	1
14	Fan Adapter Gasket	50203PB	1	1	1	1
15	Fan Adapter	90199	1	1	1	1
17	Fan Fasco	50212PB	1	1	1	1
—	Jacket Assembly	6126	1			
		6127		1		
		6128			1	
		6129				1
—	Honeywell VR8204A-2001 Gas Valve (NG)	50583	1	1	1	
	Honeywell VR8304M-4002 Gas Valve (NG)	50589				1
	Honeywell VR8204A-2013 Gas Valve (LP)	50584	1	1	1	
	Honeywell VR8304M-4010 Gas Valve (LP)	50590				1
—	Honeywell Q348A-1002 Pilot (NG)	50558	1	1	1	1
	Honeywell Q348A-1358 Pilot (LP)	51814	1	1	1	1
	Hydrolevel 3200 Limit	50334				
—	Hydrolevel Well 48-201	50723	1	1	1	1
—	Cleveland N52 1104-03	50038PB	1			
	Cleveland N52 1104-02	50037PB		1	1	
—	Cleveland N52 1104-01	50036PB				1
	Safety Relief Valve 30 psi	50501PB	1	1	1	1
	Temperature Pressure Gauge	51774	1	1	1	1
	Ignition Module S8610	50672	1	1	1	1
	Ignition Cable HW394800-30	50640	1	1	1	1
	Relay 24 VAC Coil, DPST	50726	1	1	1	1
	Zettler XC90113-117 Relay Center (Old Style)	50786	1	1	1	1
	Zettler ZC90341 Relay (Old Style)	50790	1	1	1	1
<b>CONVERSION KITS</b>						
—	Natural Gas to LP	90776	1	1	1	1
—	LP to Natural Gas	91147	1	1	1	
		91148				1