



720 SERIES



TECHNICAL SPECIFICATIONS

Operating Voltage:	12 or 24 VDC nominal
Output Force Load:	50 lbf (222N)
Motor Current (no load):	1 amp
Motor Current Stalled:	7 amps
Stroke (max):	3 inches (76.2 mm)
Stroke Speed:	.06 to 2.0 inches/second (1.5-50.8 mm/s)
Weight:	2.4 lbs (1kg)
Operating Temp Range:	-40°F (-40°C) to 158°F (70°C)

CONSTRUCTION

- All aluminum housing
- Stainless steel screw drive
- Sealed
- Dust proof and splash proof

OPTIONS

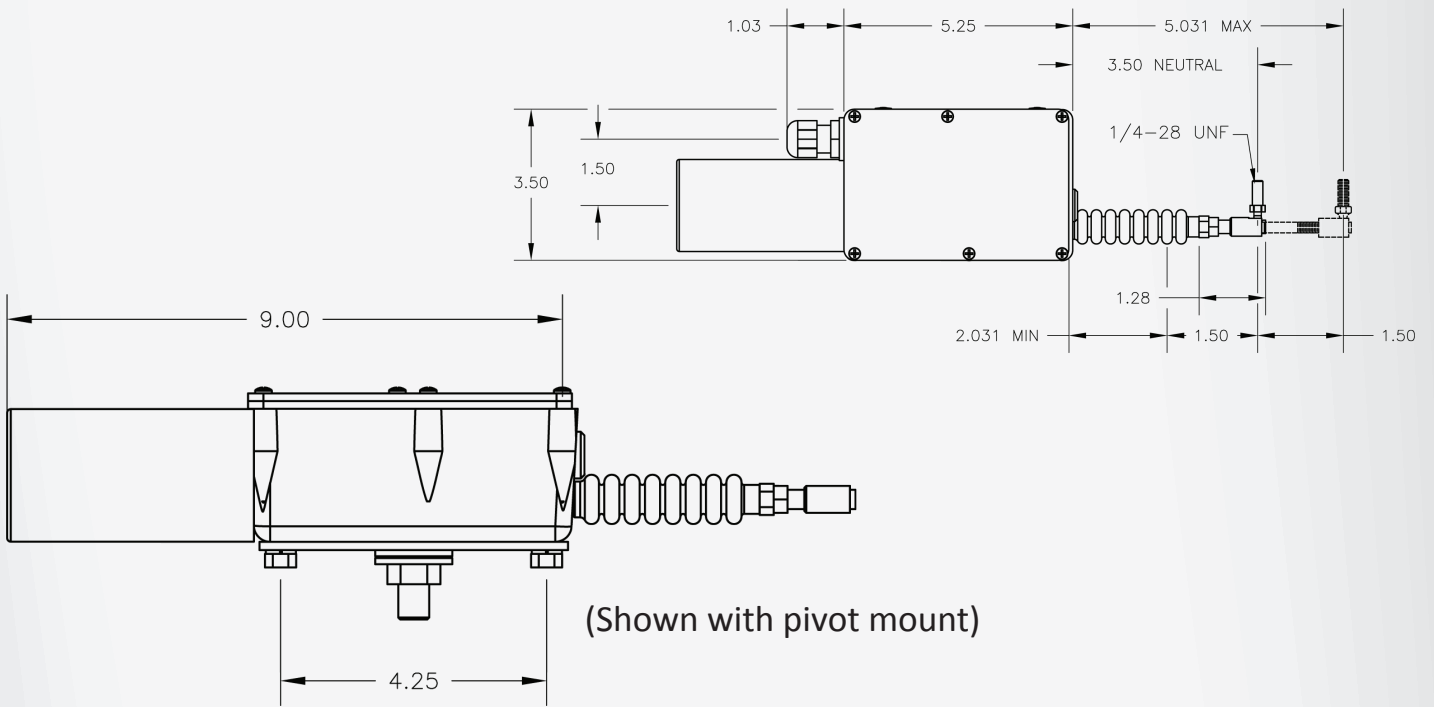
- Adjustable limit switches
- 2 position
- 3 position
- Position Feedback
 - None
 - 2k
 - 10K
- End of stroke indication outputs

MOUNTS

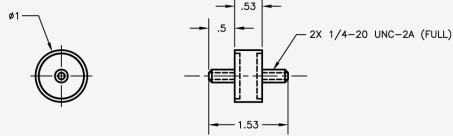
- None
- Shock
- Pivot
- Plate
- Custom

OUTPUT

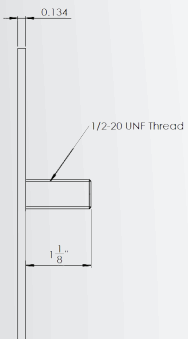
- Rod
- Push pull cable (variable lengths)
- Dual outputs
- None



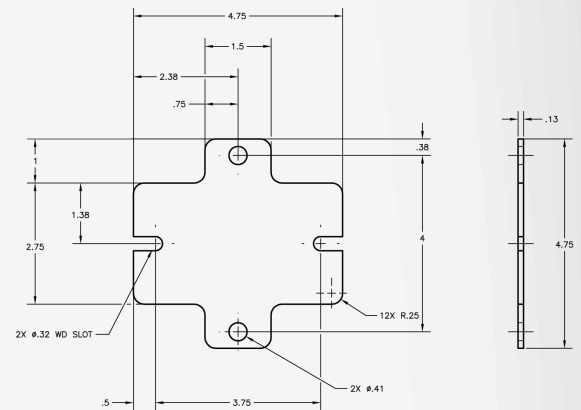
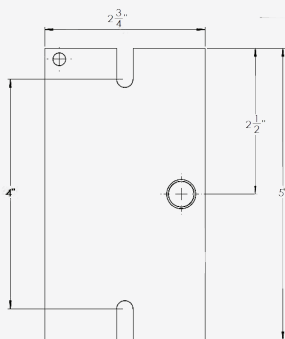
MOUNTS



Shock Mount



Pivot Mount



Adapter Plate

INNOVATING, EFFECTIVE MOTION CONTROL SOLUTIONS