



**ESFC – DEFENDER – PLANT PROTECTOR & SOIL CONDITIONER FOR LAWN, TURF, TREES,  
FLOWERS, ORNAMENTALS & MORE**

**FIELD TRIAL**

**PURPOSE:** To determine the effectiveness of ESFC on Potato Scab

**PRODUCT:** ESFC

**TEST PERIOD:** 04.07.08 - 19.09.08

**METHOD:**

**Control area:** ESFC not applied.

**Test Area 1:** ESFC applied at seeding.

**Test Area 2:** ESFC applied at seeding & 69 days later

**POTATO SPECIES**

Hokkaikogane seed tuber

**TILLAGE AREA**

**Control Area:** (Species) Hokkaikogane - 10,000m<sup>3</sup> - No preceding crop.

**Test Area 1:** (Species) Hokkaikogane - 13,000m<sup>3</sup> - Preceding crop: Beans

**Test Area 2:** (Species) Hokkaikogane - 13,000m<sup>3</sup> - Preceding crop: Beans

**SEEDING DATES**

**Control Area:** April 23, 2008

**Test Area 1:** April 24, 2008

**Test Area 2:** April 23, 2008

**APPLICATION DATES**

**Test Area 1:** June 6, 2008

**Test Area 2:** June 6, 2008

**First application:** April 23, 2008

**Second application:** June 30, 2008

**OBSERVATIONS 90 DAYS AFTER SEEDING (July 20/08)**

**Control Area:** Scab was confirmed in the whole field

**Test Area 1:** Scab was confirmed in part of the field

**Test Area 2:** No scab observed

**OBSERVATIONS AT HARVEST**

**Control Area:** Harvest Date: August 25 thru August 27

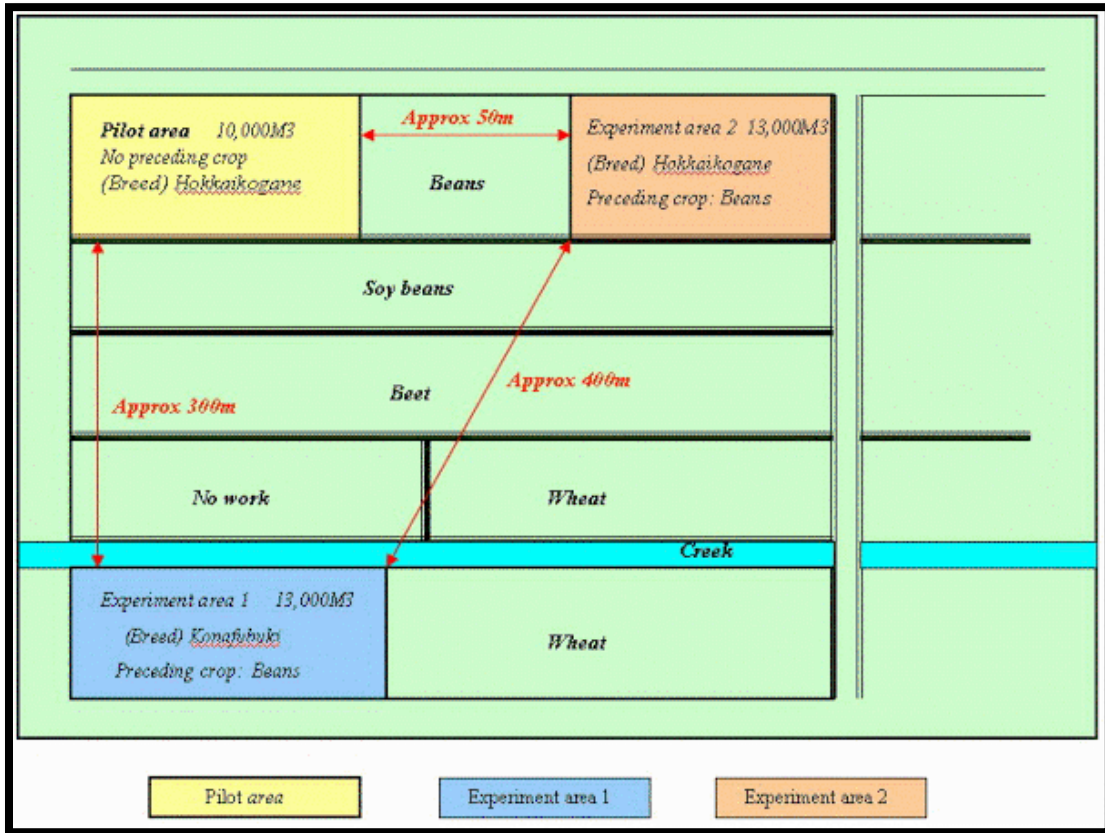
**Scab Infection Rate:** 90%

**Test Area 1:** Harvest Date: August 30 thru August 31

**Scab Infection Rate:** 30%

**Test Area 2:** Harvest Date: August 25 thru August 27

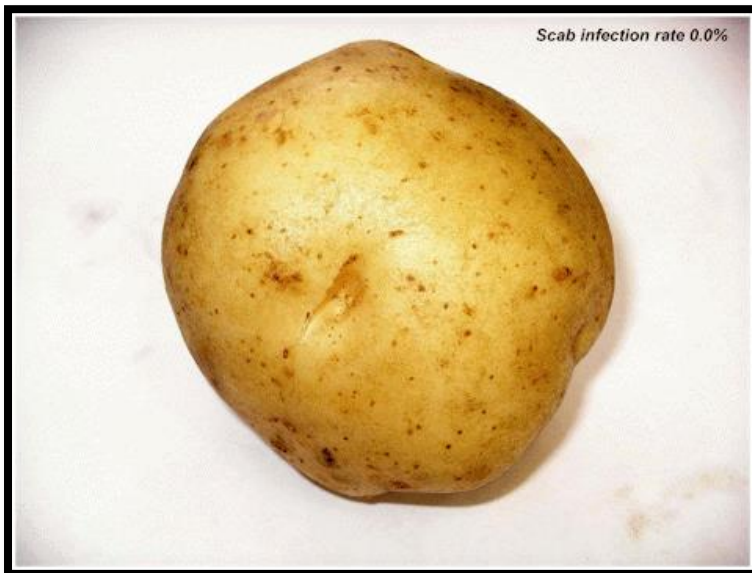
**Scab Infection Rate:** 0.0%



**CONTROL AREA  
NO ESFC APPLIED  
SCAB INFECTION RATE: 90%**



TEST AREA 1  
ESFC APPLIED ONCE AT SEEDING  
**SCAB INFECTION RATE 30%**



TEST AREA 2  
ESFC APPLIED AT SEEDING & 69 DAYS LATER  
**SCAB INFECTION RATE 0.0%**