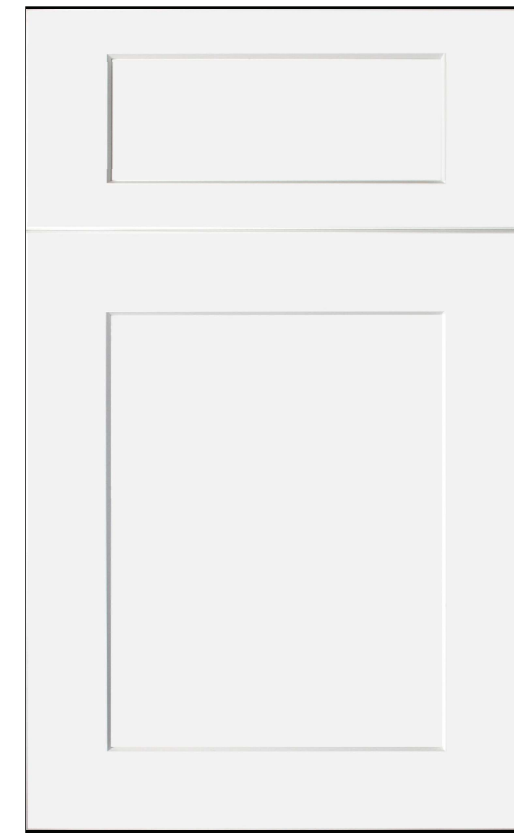




GALAXY FROST

DOOR STYLE



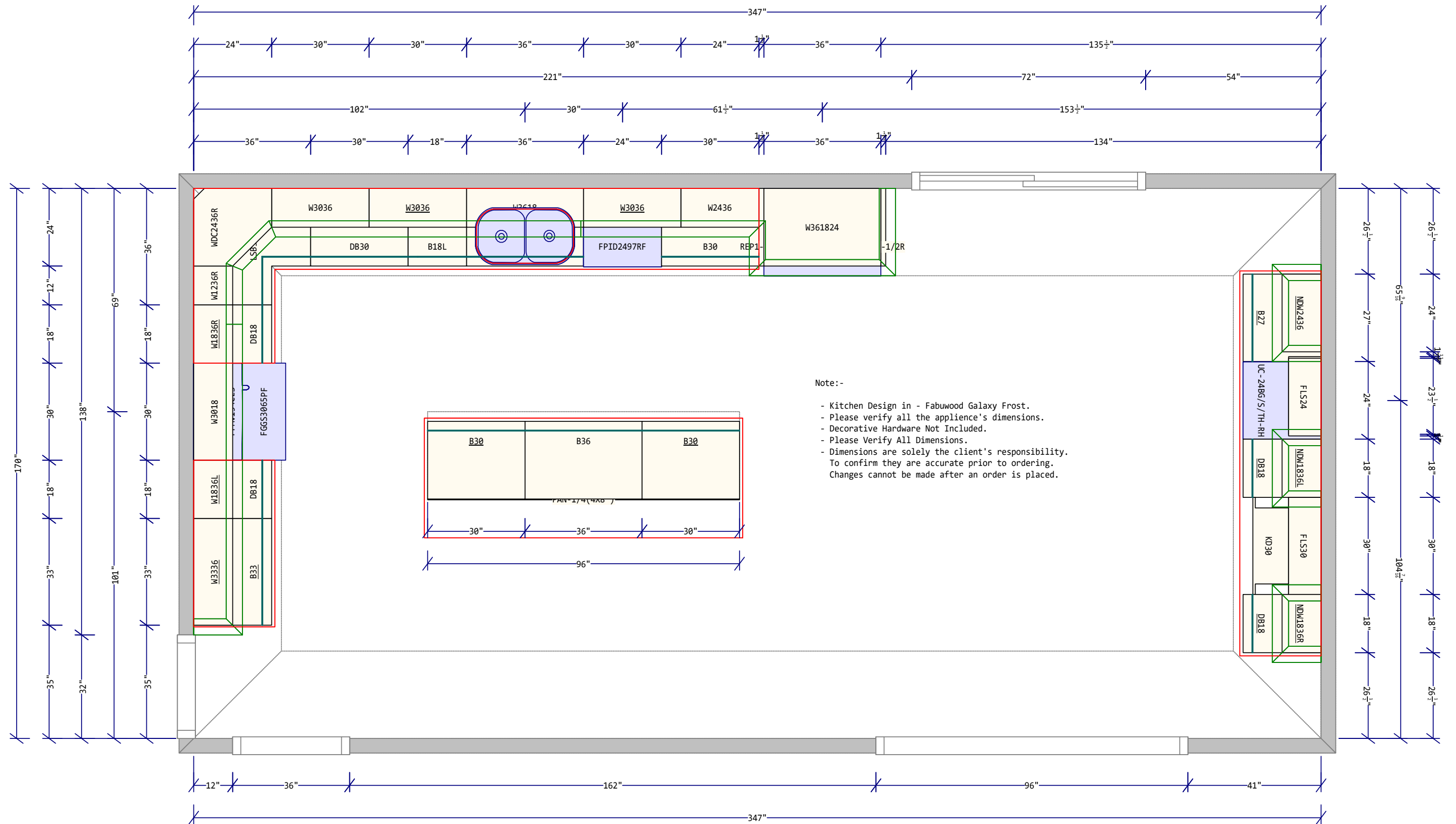
CLIENT
Sample

SALES REP
Dan Strauss

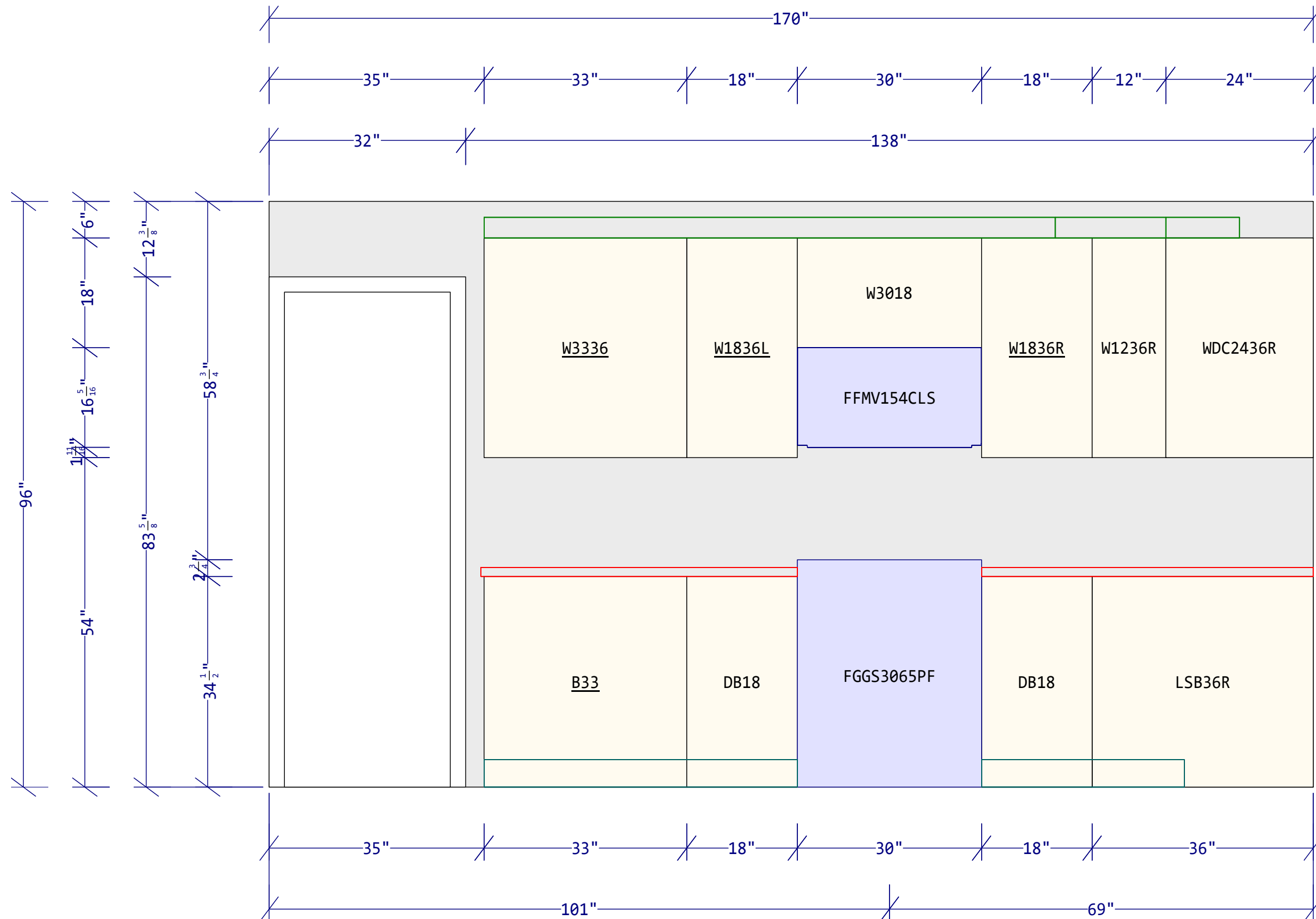


☎ 215-867-5200
✉ orders@usadistributor.com
🌐 www.usadistributor.app

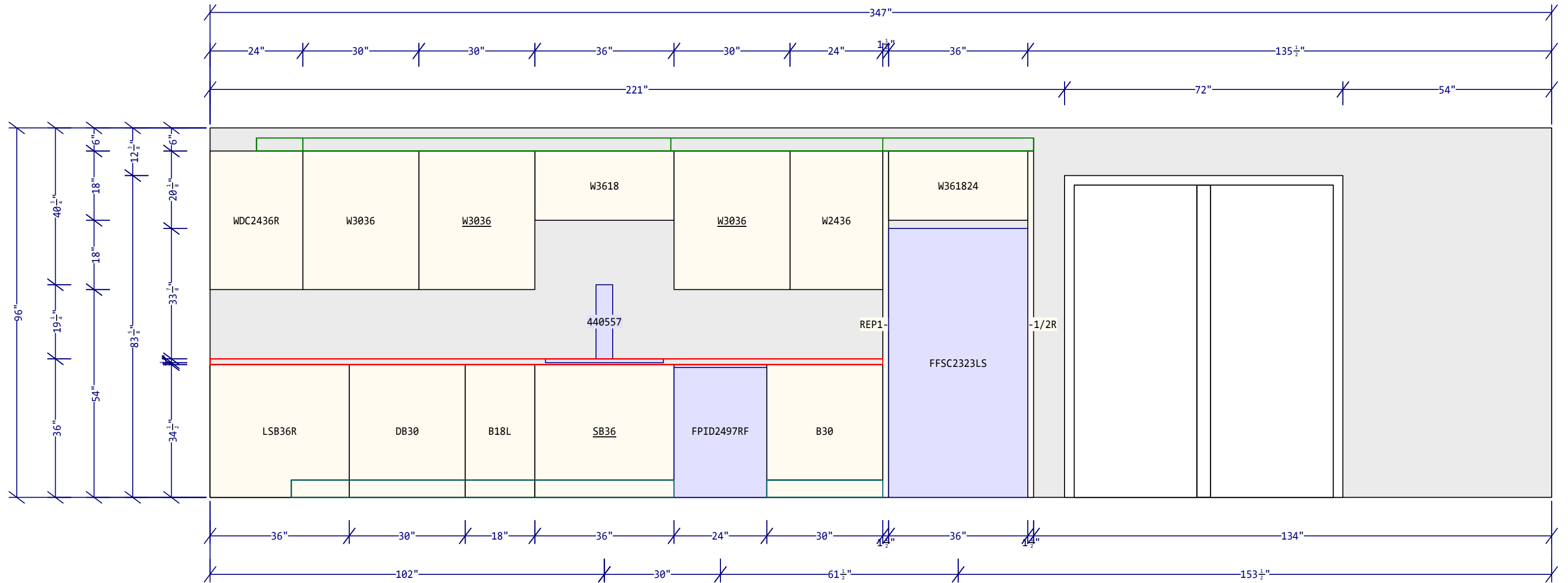
FLOOR PLAN



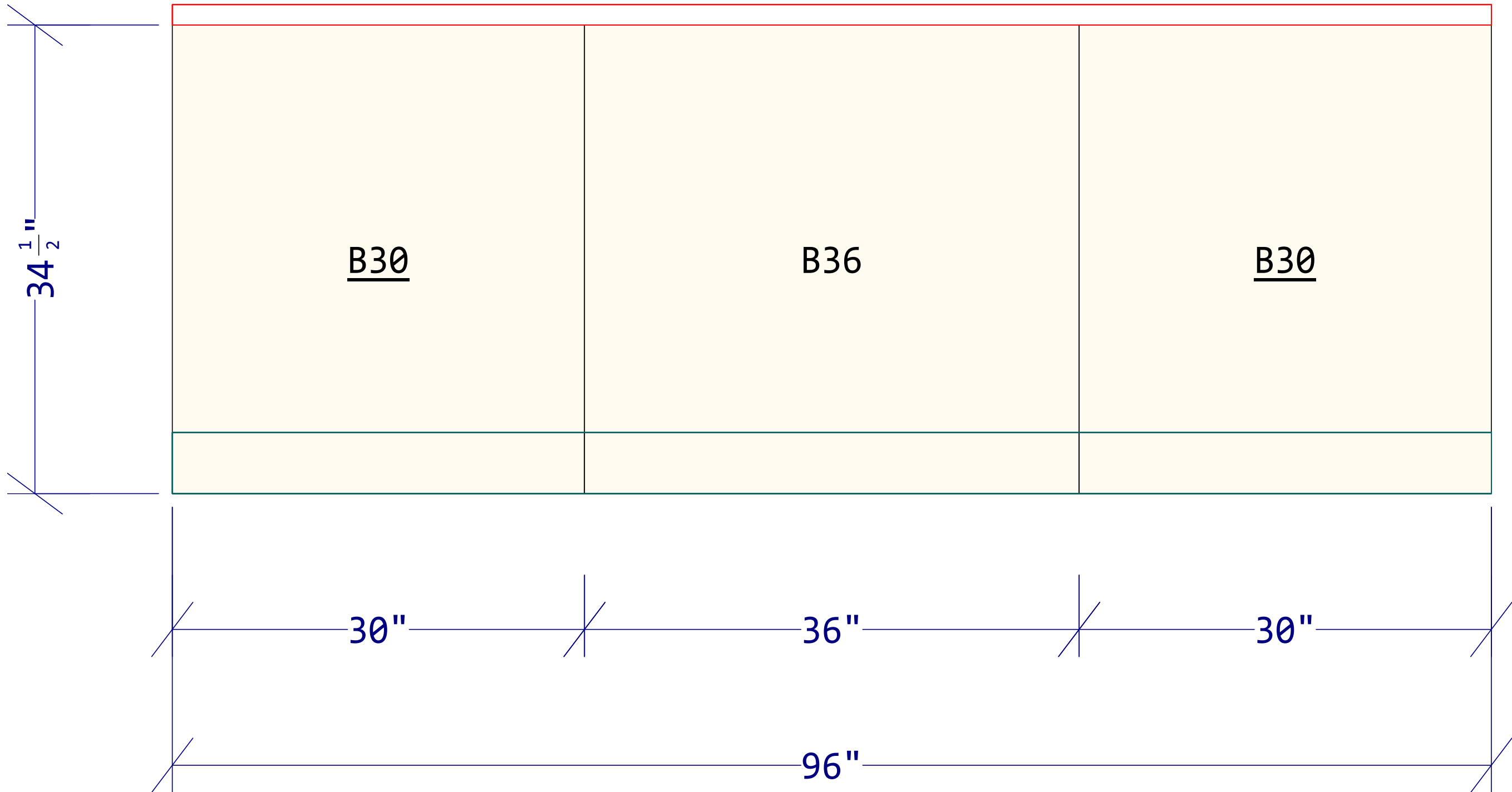
ELEVATION



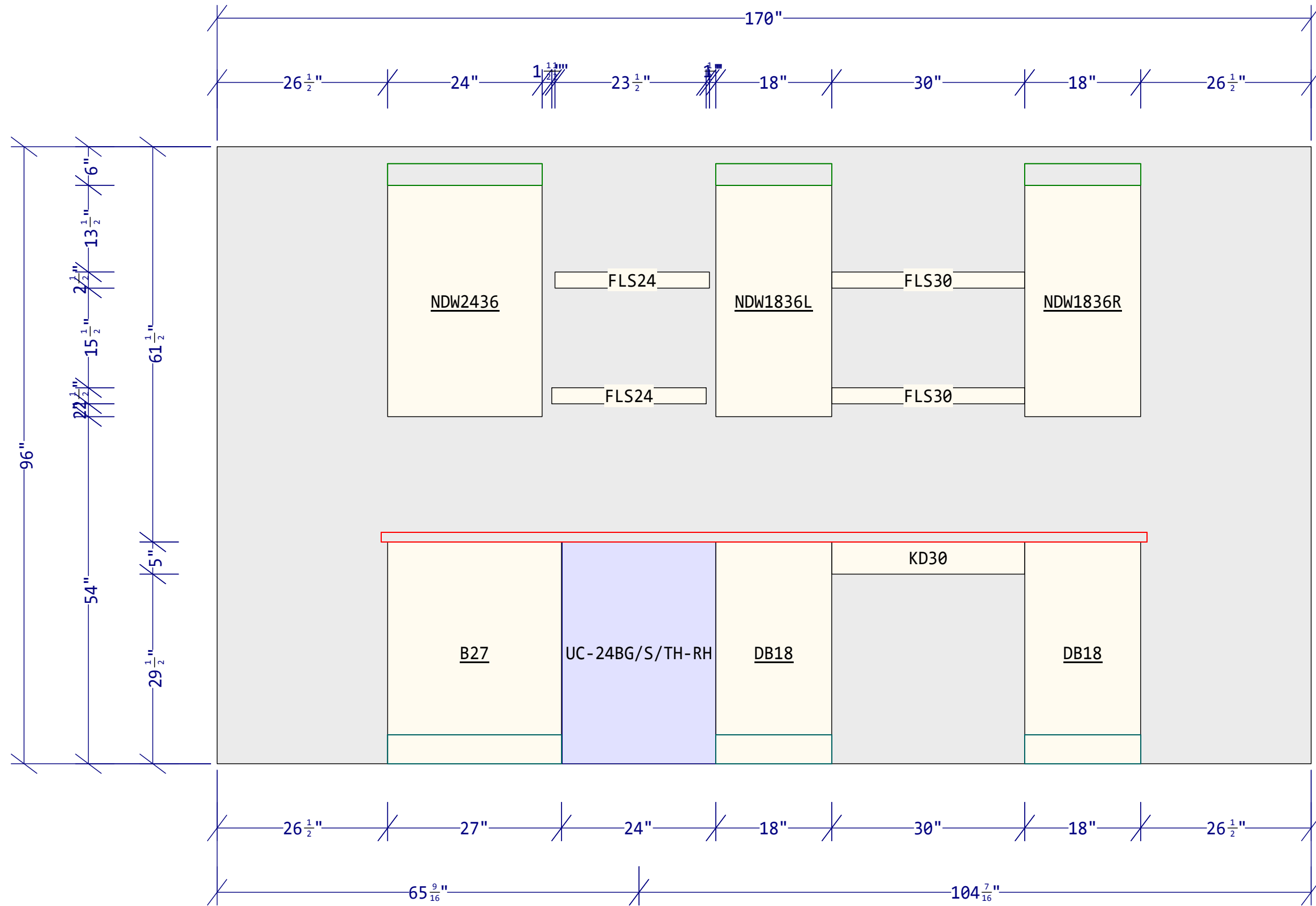
ELEVATION



ELEVATION



ELEVATION



FLOOR PLAN



PERSPECTIVE



PERSPECTIVE



PERSPECTIVE



PERSPECTIVE



PERSPECTIVE



QUOTE

Wall Door
Tall Door
Base Door
Door style

Galaxy Frost (I)
 Galaxy Frost (I)

Drawer Front
Drawer Pull
Door Pull

#	Qty	User code	Manuf. code	Description	Galaxy Frost (I)
Cabinets					
1	1	NDW2436	NDW2436	36" H Wall No Door	
1.1	2	GDW2436	GDW2436	36" H Glass Door {Allure}	
1.2	1	EXSIDE BOTH	EXSIDE	Exposed Sides - Wall Both	
1.2.1	1	EXSIDE L	EXSIDE	Exposed Sides - Wall (Left)	
1.2.2	1	EXSIDE R	EXSIDE	Exposed Sides - Wall (Right)	
2	1	FLS24	FLS24	24" Floating Shelf	
3	1	FLS24	FLS24	24" Floating Shelf	
4	1	NDW1836L	NDW1836	36" H Wall No Door	
4.1	1	GDW1836	GDW1836	36" H Glass Door {Allure}	
4.2	1	EXSIDE BOTH	EXSIDE	Exposed Sides - Wall Both	
4.2.1	1	EXSIDE L	EXSIDE	Exposed Sides - Wall (Left)	
4.2.2	1	EXSIDE R	EXSIDE	Exposed Sides - Wall (Right)	
5	1	FLS30	FLS30	30" Floating Shelf	
6	1	FLS30	FLS30	30" Floating Shelf	
7	1	NDW1836R	NDW1836	36" H Wall No Door	
7.1	1	GDW1836	GDW1836	36" H Glass Door {Allure}	
7.2	1	EXSIDE BOTH	EXSIDE	Exposed Sides - Wall Both	
7.2.1	1	EXSIDE L	EXSIDE	Exposed Sides - Wall (Left)	
7.2.2	1	EXSIDE R	EXSIDE	Exposed Sides - Wall (Right)	
8	1	W3336	W3336	36"H Wall	
8.1	1	EXSIDE L	EXSIDE	Exposed Sides - Wall (Left)	
9	1	W1836L	W1836	36"H Wall	
9.1	1	EXSIDE R	EXSIDE	Exposed Sides - Wall (Right)	
10	1	W3018	W3018	18"H Wall	
11	1	W1836R	W1836	36"H Wall	



QUOTE

#	Qty	User code	Manuf. code	Description	Galaxy Frost (I)
11.1	1	EXSIDE L	EXSIDE	Exposed Sides - Wall (Left)	
12	1	W1236R	W1236	36"H Wall	
13	1	W3036	W3036	36"H Wall	
14	1	WDC2436R	WDC2436	36"H Diagonal Corner Wall	
15	1	W3036	W3036	36"H Wall	
15.1	1	EXSIDE R	EXSIDE	Exposed Sides - Wall (Right)	
16	1	W3618	W3618	18"H Wall	
17	1	W3036	W3036	36"H Wall	
17.1	1	EXSIDE L	EXSIDE	Exposed Sides - Wall (Left)	
18	1	W2436	W2436	36"H Wall	
19	1	W361824	W361824	18"H Wall 24"Deep	
20	1	PAN-1/4(4X8')	PAN-1/4	MDF PANEL 4X8 1/4"	
21	1	B27	B27	Base Double Door/Drawer	
21.1	1	EXSIDE L	EXSIDE	Exposed Sides - Base (Left)	
22	1	DB18	DB18	Base 3 Drawers	
22.1	1	EXSIDE R	EXSIDE	Exposed Sides - Base (Right)	
23	1	KD30	KD30	Knee Drawer	
24	1	DB18	DB18	Base 3 Drawers	
24.1	1	EXSIDE BOTH	EXSIDE	Exposed Side- Base Both	
24.1.1	1	EXSIDE R	EXSIDE	Exposed Sides - Base (Right)	
24.1.2	1	EXSIDE L	EXSIDE	Exposed Sides - Base (Left)	
25	1	B33	B33	Base Double Doors/Double Drawers	
25.1	1	EXSIDE L	EXSIDE	Exposed Sides - Base (Left)	
26	1	DB18	DB18	Base 3 Drawers	
27	1	DB18	DB18	Base 3 Drawers	
28	1	LSB36R	LSB36	Lazy Susan	
29	1	DB30	DB30	Base 3 Drawers	
30	1	B18L	B18	Base Single Door/Drawer	
31	1	SB36	SB36	Sink Base	



QUOTE

#	Qty	User code	Manuf. code	Description	Galaxy Frost (I)
32	1	B30	B30	Base Double Door/Drawer	
33	1	B30	B30	Base Double Door/Drawer	
33.1	1	EXSIDE L	EXSIDE	Exposed Sides - Base (Left)	
34	1	B36	B36	Base Double Doors/Double Drawers	
35	1	B30	B30	Base Double Door/Drawer	
35.1	1	EXSIDE R	EXSIDE	Exposed Sides - Base (Right)	
36	1	REP1-1/2L	REP1-1/2	96"H Refrigerator End Panel	
37	1	REP1-1/2R	REP1-1/2	96"H Refrigerator End Panel	
38	5	TK8	TK8	Toe Kick {All Lines}	
39	7	CM-6	CM-6	Large Crown Molding {N/A w/Value line}	
Accessories					
*40	1	OCM8-1 1/4-LI	OCM8-1 1/4	Outside Molding 1 1/4"	
*41	5	SM8-S-LI	SM8-S	Simple Scribe Molding {N/A w/Value line}	
*42	1	TOUCH UP KIT	TOUCH UP KIT	Touch Up Kit	

Total	26,976.00
<i>Discount (40%) :</i>	10,790.40
Net Total	16,185.60

*: non-plan item