

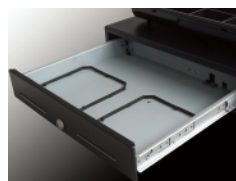


Heavy Duty Large Cash Drawer


INNOVATION QUALITY SERVICE

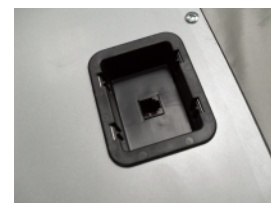
SLD46-AW

Made of heavy gauge steel, suitable for heavy duty use and prolonged operational life, the ideal choice for reliability and perfect platform for any EPoS terminal. Adjustable and removable 4/5-note and 8-coin Cash tray with metal wire grippers, making it worldwide compatible.



 Second Floor Space for storing big notes and medias

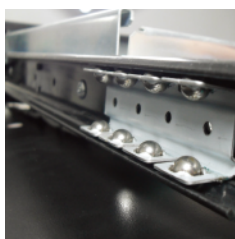
Easy access
interface location 




Durable Metal Wire Gripper
Bill Holder Tested over one
million operations

Easy and comfortable
operation. Human
Engineering Design

Removable and adjustable
cash tray



 Industrial grade steel
ball-bearing slides

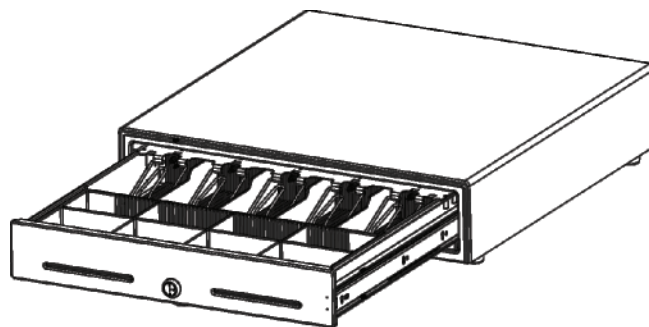


SLD46-AW Specifications

MODEL NUMBER	SLD46-AW
PHYSICAL	
Dimension	460(W)x460(D)x100(H)mm
Construction	Thick gauge cold rolled steel & SECC
Finish	Textured hybrid powder coat
Color	Black, Beige and Custom type
Slide	Ball bearing slide for smooth & stable operation
CASH TRAY (INSERT)	
Construction	Shatter-resistant plastic
Currency Layout	4/5-Bill with Metal Metal wire grips, 8 Adjustable Coin Slots
Media Slots	2
OPERATION	
Drawer Lock	3-Position lock / 4-Functions: locked open/closed, manual open, electronically driven
Interface	RJ11, RJ12, USB, RS232, DC Φ 2.5 / 3.5 Jack, custom type
Lifecycle	MTBF 2,000,000 times +
Micro Switch	Cash Drawer Status Micro Switch

OPTION	ACCESSORIES	
Micro-switch	Part Number	Description
Stainless Steel Front	Tray-4658/4648	Cash Tray
Cash tray with different currency layout	Bracket-41268	Under Mounting brackets
Different color	DT-100U	USB Trigger
Different interfaces	DT-100RS	Serial Interface Trigger

Packing Details			
Models	Net Weight(kg)	Gross Weight(kg)	Carton Size(cm)
SLD46-AW	10.10	11.10	52.5 × 51.1 × 17.0



Specifications are subjected to change without notice.