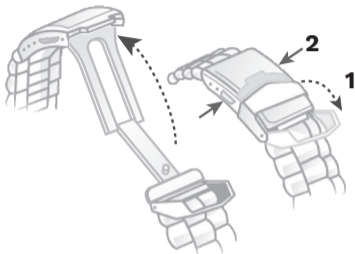


HOW TO USE A DEPLOYANT CLASP

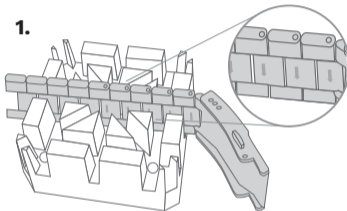


1. Flip the cover.
2. Press the buttons on the clasp sides.

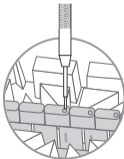
HOW TO RESIZE METAL BRACELET

On the inside of the bracelet, you will see some small arrows engraved on removeable links.

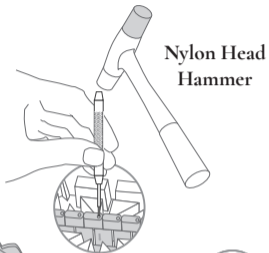
1.



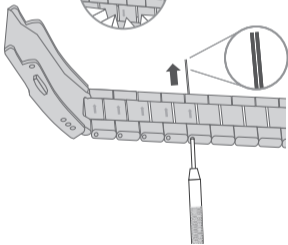
2.



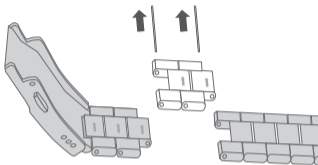
3.



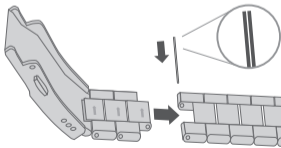
4.



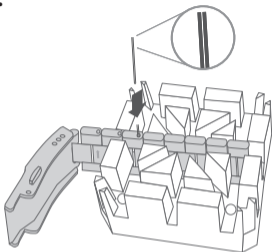
5.



6.

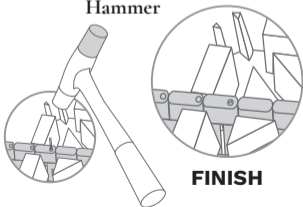


7.



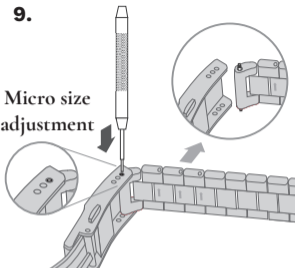
8.

Nylon Head Hammer

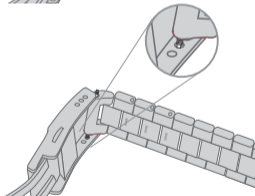


9.

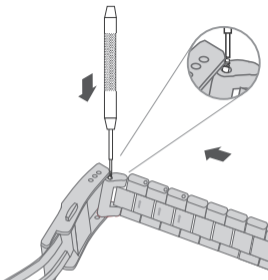
**Micro size
adjustment**



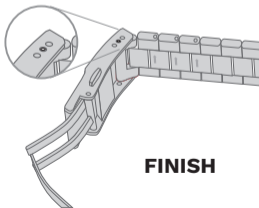
10.



11.

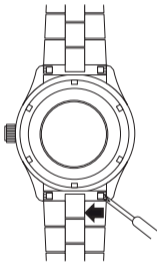


12.

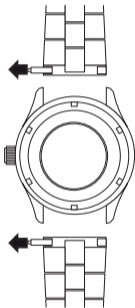


HOW TO CHANGE THE BRACE- LET TO NATO STRAP

1.



2.



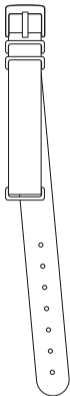
3.



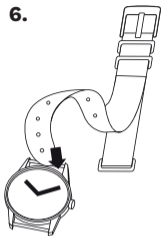
4.



5.



6.



7.



8.

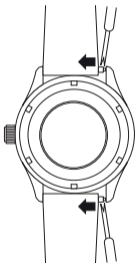


9.



HOW TO CHANGE THE STRAPS TO NATO STRAP

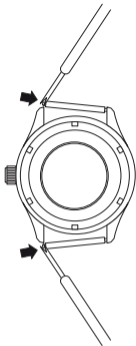
1.



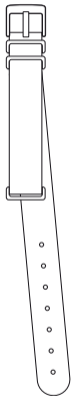
2.



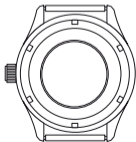
3.



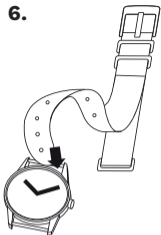
5.



4.



6.



8.



7.

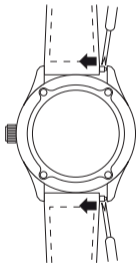


9.

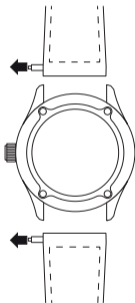


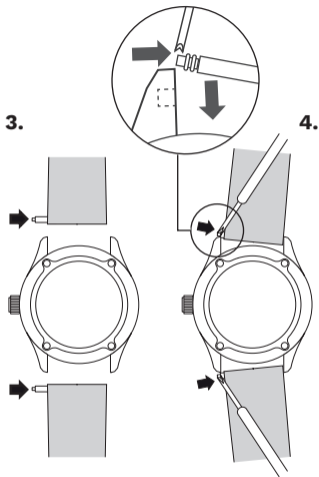
HOW TO CHANGE THE LEATHER STRAP TO RUBBER STRAP

1.

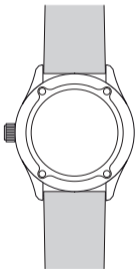


2.



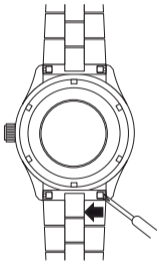


5.



HOW TO CHANGE THE BRACELET TO LEATHER STRAP

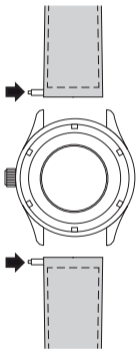
1.



2.



3.



4.



5.

