

 *AVI_8*

For more details on operating this timepiece please refer to the enclosed booklet or visit:

AVI-8.COM



AVI-8

FLYBOY

**TUSKEGEE AIRMEN
MECA-QUARTZ
LIMITED EDITION**

For more information
Pour plus d'informations
Para más información
Per maggiori informazioni
Für mehr Informationen
想要查询更多资讯
詳細については



Instruction Manual

Vol. 1.103 EN

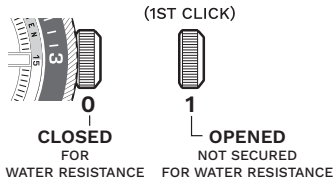
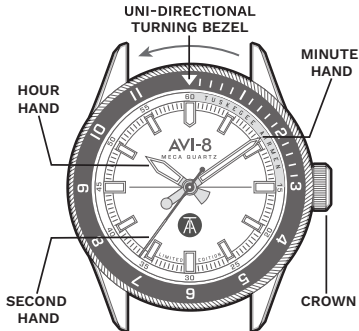
AV-4103

MECA-QUARTZ WATCH

This watch is powered by a Japanese made “Meca-Quartz” movement. It combines a battery regulated engine with a mechanical module. The result is a watch that delivers the meticulous pinpoint precision of a quartz movement along with the smooth sweep seconds hand and visual charm of mechanical watches.

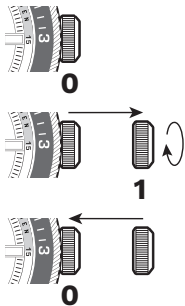
For more details on operating this timepiece please refer to the enclosed booklet or visit:

AVI-8.COM



HOW TO SET THE TIME

1. Pull the crown to position [1]-(1st click).
2. Turn the crown clockwise to set the correct time.
3. Push the crown in.



HOW TO READ A SECOND TIME ZONE

Using the bezel of this watch, you can read the time of a second timezone giving you at a glance view of the time in two different places with ease.

For example you live in London and the current time is 2.00 PM.

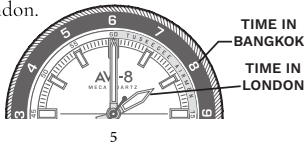
Knowing that the time in Bangkok is +6 Hours ahead.



You can simply move the bezel so that the number 6 is aligned to the 12 o'clock position on the dial.



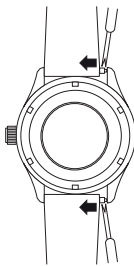
By doing so this gives you the time at a glance in London and in Bangkok with the bezel referencing the time in Bangkok and the hour hand on the main dial positioned at the time London.



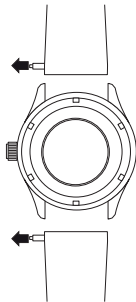
5

HOW TO CHANGE THE STRAPS TO NATO STRAP

1.

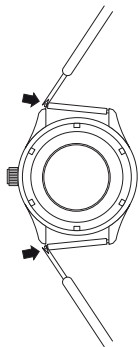


2.

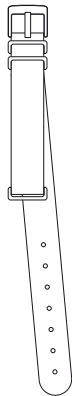


6

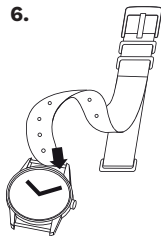
3.



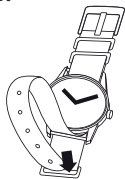
5.



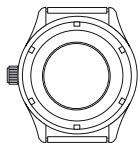
6.



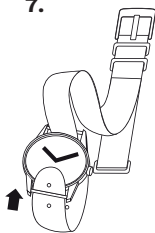
8.



4.



7.



9.



WATER RESISTANCE

Note that the water resistance chart serves only as a guide (please refer to the water resistance chart on the next page). Actual water resistance may vary depending on a number of factors including water temperature, water salinity and use under water. The water resistance of your timepiece may eventually be compromised over time with general wear and tear and use of your timepiece under adverse conditions.

Note that you should **NEVER** wear your watch in a jacuzzi, hot shower or steam room where steam may enter the case despite the watertight seals used to protect your watch. This may cause condensation inside your watch, which may affect and damage the inner workings of your watch.

WATER RESISTANCE CHART	50M/ 5ATM
SPLASH/ SHOWERING	
SWIMMING/ BATHING	
BRIEF SWIMMING/ WATER SPORTS	
PROLONGED SWIMMING/ FREE DIVING	
SCUBA DIVING	
PROFESSIONAL DEEP SEA DIVING	

Represented By:
Authorised Rep Compliance Ltd.,
Ground Floor, 71 Lower Baggot Street,
Dublin, D02 P593, Ireland.

WARNING

- **INGESTION HAZARD:** This product contains a button cell or coin battery.
- **DEATH** or serious injury can occur if ingested.
- A swallowed button cell or coin battery can cause **Internal Chemical Burns** in as little as 2 hours.
- **KEEP** new and used batteries **OUT OF REACH** of CHILDREN.
- **Seek immediate medical attention** if a battery is suspected to be swallowed or inserted inside any part of the body.



**CE UK
CA**