

 *AVI_8*

For more details on operating this timepiece please refer to the enclosed booklet or visit:

AVI-8.COM



AVI-8

**HAWKER
HURRICANE**

MCKELLAR DUAL TIME

For more information
Pour plus d'informations
Para más información
Per maggiori informazioni
Für mehr Informationen
想要查询更多资讯
詳細については



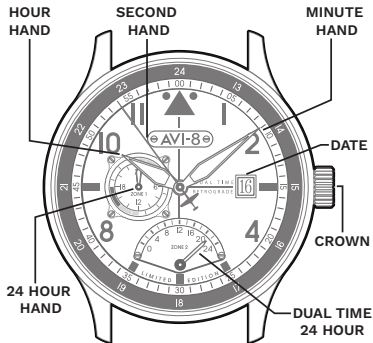
Instruction Manual

Vol. 1.101 EN

AV-4101

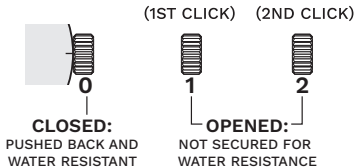
MULTI-FUNCTION WATCH

This watch is equipped with a unique multifunction feature with a second time zone read out and a 24 hour display feature.



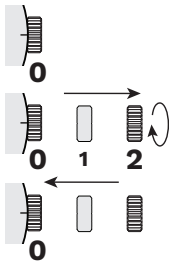
For more details on operating this timepiece please refer to the enclosed booklet or visit:

AVI-8.COM



HOW TO SET THE TIME

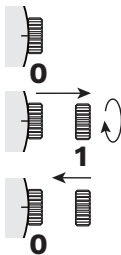
1. Pull the crown to position [2]-(2nd click).
2. Turn the crown clockwise to set the correct time.
3. Push the crown in.



* Take A.M./P.M. into consideration when setting the hour and minute hands to the desired time.

HOW TO SET THE DATE

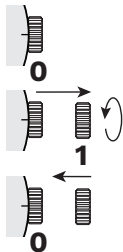
1. Pull the crown to position [1]-(1st click).
2. Turn the crown clockwise to set the correct date.
3. Push the crown in.



* Do not set the date between 9:00 P.M. and 2:00 A.M.

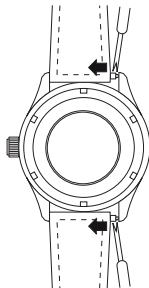
HOW TO SET THE SECOND TIME ZONE

1. Pull the crown to position [1]-(1st click).
2. Turn the crown anti-clockwise to set the Dual Time. (The dual time hand at 6 o'clock position.)
3. Push the crown in, after the 2nd time (24H) has been set.

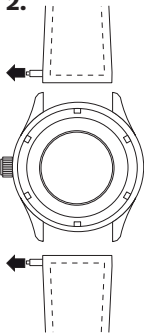


HOW TO CHANGE THE LEATHER STRAP TO NATO STRAP

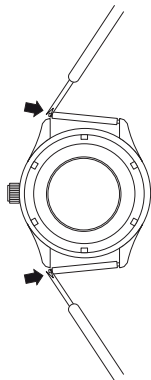
1.



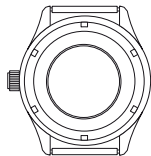
2.



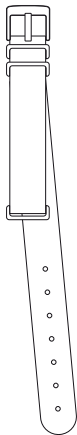
3.



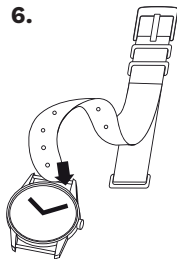
4.



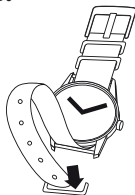
5.



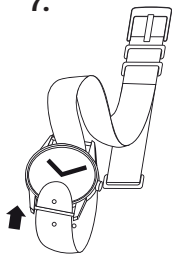
6.



8.



7.




9.



WATER RESISTANCE

Note that the water resistance chart serves only as a guide (please refer to the water resistance chart on the next page). Actual water resistance may vary depending on a number of factors including water temperature, water salinity and use under water. The water resistance of your timepiece may eventually be compromised over time with general wear and tear and use of your timepiece under adverse conditions.

Note that you should **NEVER** wear your watch in a jacuzzi, hot shower or steam room where steam may enter the case despite the watertight seals used to protect your watch. This may cause condensation inside your watch, which may affect and damage the inner workings of your watch.

WATER RESISTANCE CHART	50M/ 5ATM
SPLASH/ SHOWERING	
SWIMMING/ BATHING	
BRIEF SWIMMING/ WATER SPORTS	
PROLONGED SWIMMING/ FREE DIVING	
SCUBA DIVING	
PROFESSIONAL DEEP SEA DIVING	

Represented By:
Authorised Rep Compliance Ltd.,
Ground Floor, 71 Lower Baggot Street,
Dublin, D02 P593, Ireland.

WARNING

- **INGESTION HAZARD:** This product contains a button cell or coin battery.
- **DEATH** or serious injury can occur if ingested.
- A swallowed button cell or coin battery can cause **Internal Chemical Burns** in as little as 2 hours.
- **KEEP** new and used batteries **OUT OF REACH** of CHILDREN.
- **Seek immediate medical attention** if a battery is suspected to be swallowed or inserted inside any part of the body.



**CE UK
CA**