

📷 AVI\_8

For more details on operating this timepiece  
please refer to the enclosed booklet or visit:

**AVI-8.COM**



AVI-8

**HAWKER  
HUNTER**

**ATLAS DUAL TIME CHRONOGRAPH  
SINGAPORE AIR FORCE  
LIMITED EDITION**

For more information  
Pour plus d'informations  
Para más información  
Per maggiori informazioni  
Für mehr Informationen  
想要查询更多资讯  
詳細については



**Instruction Manual**

Vol. 1.100A EN

**AV-4100**

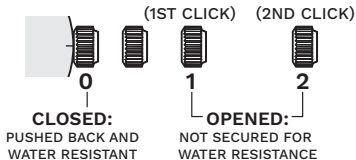
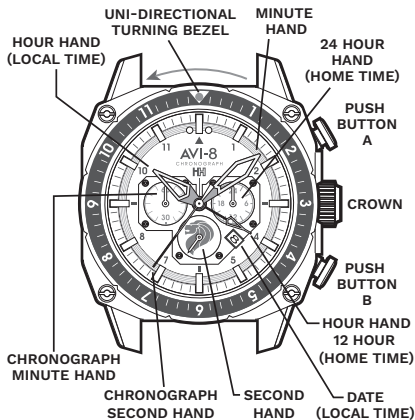
# DUAL TIME CHRONOGRAPH WATCH

This watch is powered by a quartz Chronograph movement capable of micro measurements of time.

With pinpoint accuracy you may use this watch to measure separate periods of elapsed time while simultaneously reading the current time.

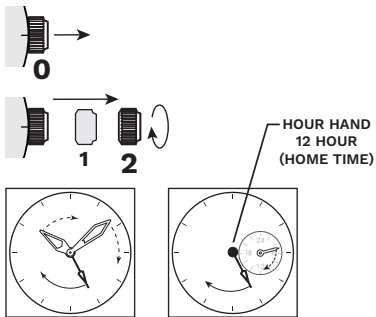
For more details on operating this timepiece please refer to the enclosed booklet or visit:

**AVI-8.COM**



## HOW TO SET THE HOME TIME

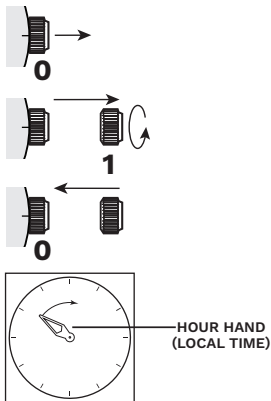
1. Put the crown to position [2]-(2nd click).
2. Turn the crown to set the current time, paying attention to the motion of 12 hour hand and 24 hour hand and minute hand.
3. 24 hour hand correspondingly with Hour hand (Home Time).



3

## HOW TO SET THE LOCAL TIME

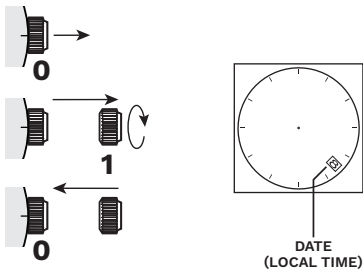
1. Put the crown to position [1]-(1st click).
2. Turn the crown anti-clockwise to set the correct time.
3. Push the crown back to position [0].



4

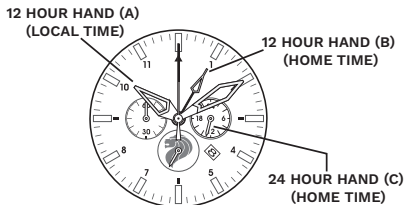
## HOW TO SET THE DATE

1. Put the crown to position [1]-(1st click).
2. Turn the crown clockwise to set the correct date.
3. Push the crown back to position [0].



\* Do not set the date between 9:00 P.M. and 1:00 A.M.

## HOW TO READ THE WATCH



When the watch hands appear in the diagram;

- Home time is 13:10:35 (12 hour hand (B) and 24 hour hand (C) display)
- Local time in Tokyo is 10:10:35 (12 hour hand (A) display).

Note:

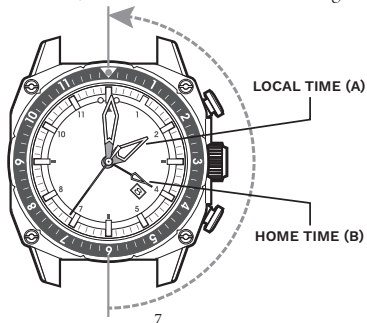
- The minute and second hands are the same under home and local time.
- The 24 hour hand (C) is synchronized with 12 hour hand (B)
- The date is synchronized with 12 hour hand (A) (local time)

## THIRD TIME ZONE READOUT

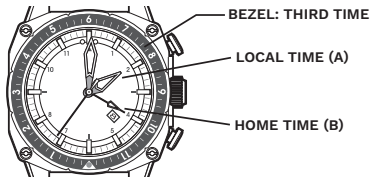
Using the bezel of this watch, you can read the time of a third time zone giving you at a glance a view of the time in three different places with ease.

For example, you have travelled to London and the current time is 2:00 PM (LOCAL TIME).

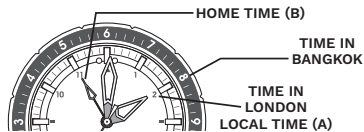
If you know that the time in Bangkok is +6 hours ahead, then we can do the following.



You can simply move the bezel so that the number 6 is aligned to the 12 o'clock position on the dial.



By doing so this gives you the time at a glance in London and in Bangkok with the bezel referencing the time in Bangkok and the hour hand on the main dial positioned at the time London.

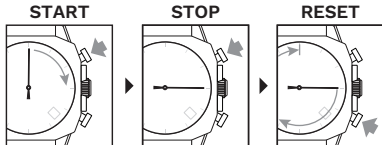


You can also continue to adjust the HOME TIME hour hand (B), for a total of three time zone readouts.

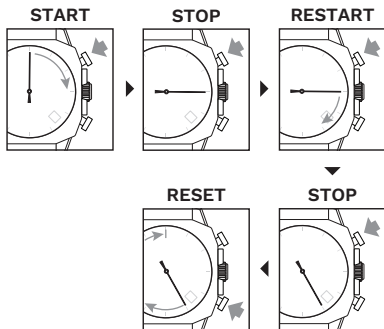
## STOPWATCH FUNCTION

- The stopwatch can measure up to 60 minutes.

### STANDARD MEASUREMENT



### ACCUMULATED ELAPSED TIME MEASUREMENT



Restart and stop of the stopwatch can be repeated by pressing the button A.

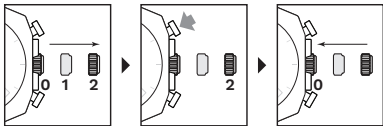
## ADJUSTING THE STOPWATCH SECOND HAND POSITION

This procedure should be performed when the chronograph second hand does not return to the Zero position after the chronograph has been reset, and including after the battery has been replaced.

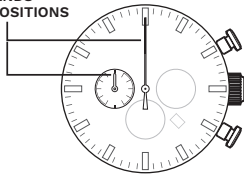
1. Pull the crown out to the [2]-(2nd click).
2. Press the button “A” once to set the chronograph second hand to the Zero position.

- \* The chronograph hands can be advanced rapidly by continuously pressing button “A”.
3. Once the chronograph hands been set at Zero position, readjust the normal hour and minute hands to the correct time and return the crown to its normal position.

\* Do not return crown to normal position while chronograph second hand returns to 12:00 (ZERO) position. Hand stops on the way when position is returned to normal position and these positions are recognized as 12:00 (ZERO) position.

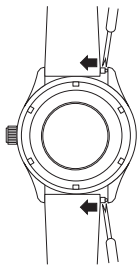


STOPWATCH  
HANDS  
ZERO POSITIONS

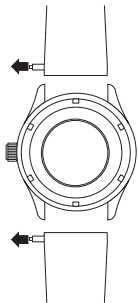


## HOW TO CHANGE THE STRAPS TO NATO STRAP

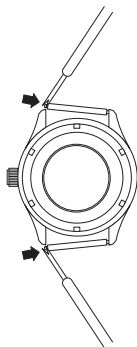
1.



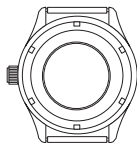
2.



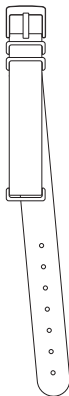
3.



4.

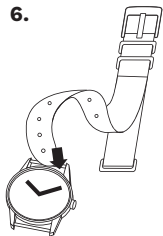


5.

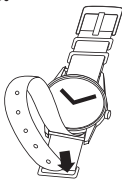




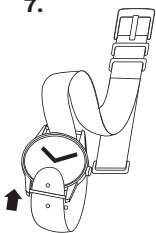
6.



8.



7.



9.



## WATER RESISTANCE

Note that the water resistance chart serves only as a guide (please refer to the water resistance chart on the next page). Actual water resistance may vary depending on a number of factors including water temperature, water salinity and use under water. The water resistance of your timepiece may eventually be compromised over time with general wear and tear and use of your timepiece under adverse conditions.

Note that you should **NEVER** wear your watch in a jacuzzi, hot shower or steam room where steam may enter the case despite the watertight seals used to protect your watch. This may cause condensation inside your watch, which may affect and damage the inner workings of your watch.

## WATER RESISTANCE CHART

50M/  
5ATM

SPLASH/  
SHOWERING



SWIMMING/  
BATHING



BRIEF SWIMMING/  
WATER SPORTS



PROLONGED  
SWIMMING/  
FREE DIVING



SCUBA  
DIVING



PROFESSIONAL  
DEEP SEA DIVING



Represented By:

Authorised Rep Compliance Ltd.,  
Ground Floor, 71 Lower Baggot Street,  
Dublin, D02 P593, Ireland.

## ⚠ WARNING

- **INGESTION HAZARD:** This product contains a button cell or coin battery.
- **DEATH** or serious injury can occur if ingested.
- A swallowed button cell or coin battery can cause **Internal Chemical Burns** in as little as 2 hours.
- **KEEP** new and used batteries **OUT OF REACH** of CHILDREN.
- **Seek immediate medical attention** if a battery is suspected to be swallowed or inserted inside any part of the body.



CE UK  
CA