

 AVI_8

For more details on operating this timepiece please refer to the enclosed booklet or visit:

AVI-8.COM



AVI-8

**HAWKER
HUNTER**

**DUKE CHRONOGRAPH
ROYAL BRITISH LEGION LIMITED EDITION**

For more information
Pour plus d'informations
Para más información
Per maggiori informazioni
Für mehr Informationen
想要查询更多资讯
詳細については



Instruction Manual

Vol. 1.80_RBL EN

AV-4080

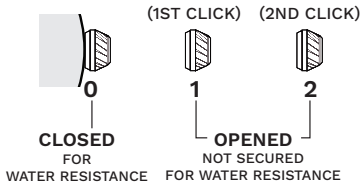
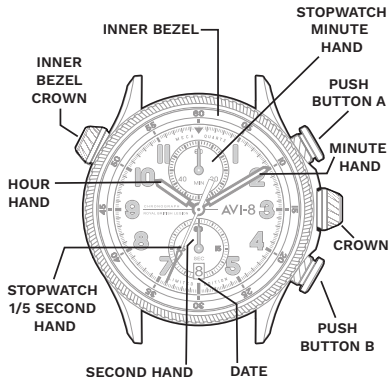
CHRONOGRAPH WATCH

Meca-Quartz Chronograph

This watch is powered by a Japanese made “Meca-Quartz” movement. It combines a battery regulated engine with a mechanical chronograph module. The result is a watch which delivers the meticulous pinpoint precision of a quartz movement along with the crisp, flyback handfeel and visual charm of mechanical watches.

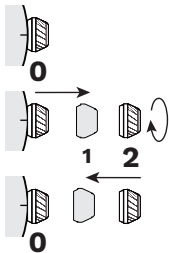
For more details on operating this timepiece please refer to the enclosed booklet or visit:

AVI-8.COM



HOW TO SET THE TIME

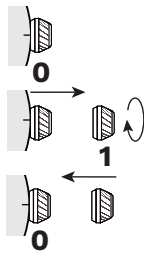
1. Pull the crown to position [2]-(2nd click).
2. Turn the crown clockwise to set the correct time.
3. Push the crown in.



- * Take A.M./P.M. into consideration when setting the hour and minute hands to the desired time.
- * When the crown is at the position [2], do not press any button, otherwise the chronograph hands will move.

HOW TO SET THE DATE

1. Pull the crown to position [1]-(1st click).
2. Turn the crown clockwise to set the correct date.
3. Push the crown in.

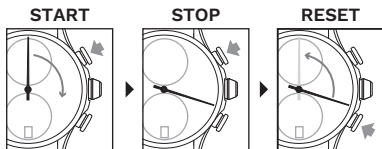


- * Do not set the date between 9:00 P.M. and 3:00 A.M., otherwise the day may not change properly. If it is necessary to set the date during the time period, first change the time to any time outside it, set the date and then reset the correct time.

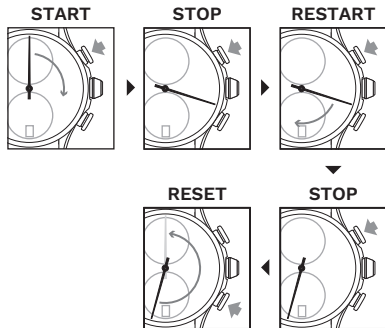
STOPWATCH FUNCTION

- This chronograph is able to measure and display time in 1/5 second united up to maximum of 59min 59sec.

STANDARD MEASUREMENT



ACCUMULATED ELAPSED TIME MEASUREMENT



Restart and stop of the stopwatch can be repeated by pressing the button A.

STOPWATCH HANDS POSITION ADJUSTMENT

If the stopwatch hands are not in the [0] position (12 o' clock position), follow the procedure below to set them to the [0] position.

If the stopwatch is in use, press the buttons in the following order to reset, and then, check if the hands return to [0] position.

- If the stopwatch is counting: A -> B
- If the stopwatch is stopped: B

If either of the stopwatch hands are not in the [0] position, reset them following the procedure below.

1. Pull the crown to position [2]-(2nd click).
2. Press button B for two seconds and release the button to reset all stopwatch hands to [0] position.

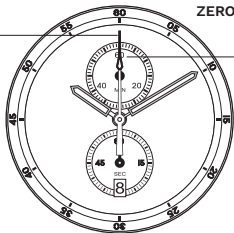
* The stopwatch minute hand moves correspondingly with the stopwatch second hand.

Tips: The hands move quickly if the respective buttons are kept pressed.

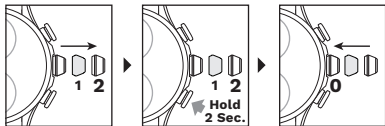
3. Push the crown in.

STOPWATCH
SECOND HAND
ZERO POSITION

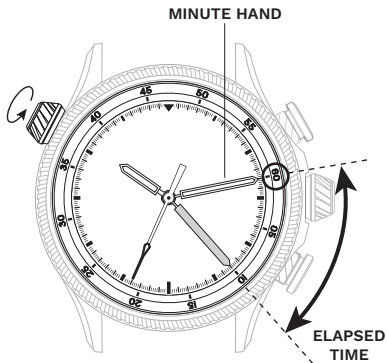
STOPWATCH
MINUTE HAND
ZERO POSITION



RESET STOPWATCH
SECOND HAND
& MINUTE HAND
TO ZERO



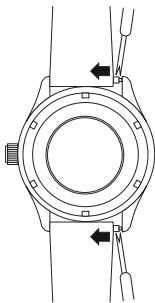
HOW TO USE INNER BEZEL TO CHECK ELAPSED TIME



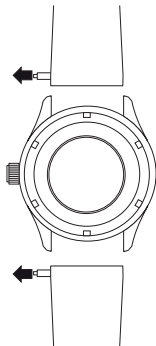
HOW TO CHANGE THE STRAPS TO NATO STRAP

1. Turn the upper crown anti-clockwise, the inner bezel turns clockwise.
2. Align the mark “60” of the inner bezel with the position of minute hand (white minute hand).
3. Then read the scale above the inner bezel, to which the minute hand points so as to figure out the elapsed time (gray minute hand).

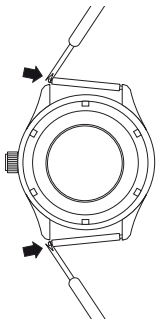
1.



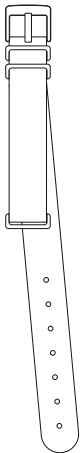
2.



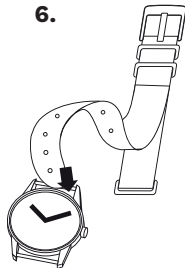
3.



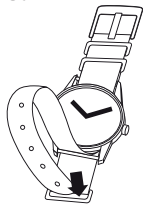
5.



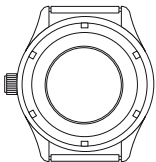
6.



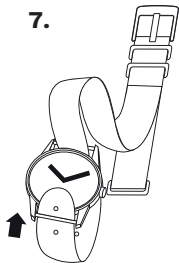
8.



4.



7.




9.



WATER RESISTANCE

Note that the water resistance chart serves only as a guide (please refer to the water resistance chart on the next page). Actual water resistance may vary depending on a number of factors including water temperature, water salinity and use under water. The water resistance of your timepiece may eventually be compromised over time with general wear and tear and use of your timepiece under adverse conditions.

Note that you should **NEVER** wear your watch in a jacuzzi, hot shower or steam room where steam may enter the case despite the watertight seals used to protect your watch. This may cause condensation inside your watch, which may affect and damage the inner workings of your watch.

WATER RESISTANCE CHART	50M/ 5ATM
SPLASH/ SHOWERING	
SWIMMING/ BATHING	
BRIEF SWIMMING/ WATER SPORTS	
PROLONGED SWIMMING/ FREE DIVING	
SCUBA DIVING	
PROFESSIONAL DEEP SEA DIVING	

Represented By:
Authorised Rep Compliance Ltd.,
Ground Floor, 71 Lower Baggot Street,
Dublin, D02 P593, Ireland.

WARNING

- **INGESTION HAZARD:** This product contains a button cell or coin battery.
- **DEATH** or serious injury can occur if ingested.
- A swallowed button cell or coin battery can cause **Internal Chemical Burns** in as little as **2 hours**.
- **KEEP** new and used batteries **OUT OF REACH** of **CHILDREN**.
- **Seek immediate medical attention** if a battery is suspected to be swallowed or inserted inside any part of the body.



**CE UK
CA**