

 AVI_8

For more details on operating this timepiece please refer to the enclosed booklet or visit:

AVI-8.COM



AVI-8

**HAWKER
HUNTER**

RETROGRADE CHRONOGRAPH

For more information
Pour plus d'informations
Para más información
Per maggiori informazioni
Für mehr Informationen
想要查询更多资讯
詳細については



Instruction Manual

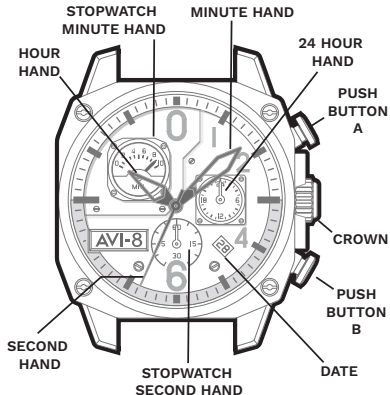
Vol. 1.52 EN

AV-4052

CHRONOGRAPH WATCH

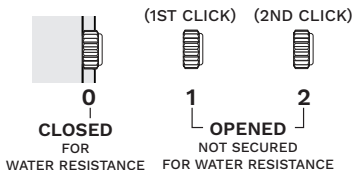
This watch is powered by a quartz Chronograph movement capable of split micro measurements of time.

With pinpoint accuracy you may use this watch to measure separate periods of elapsed time while simultaneously reading the current time.



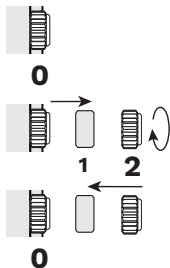
For more details on operating this timepiece please refer to the enclosed booklet or visit:

AVI-8.COM



HOW TO SET THE TIME

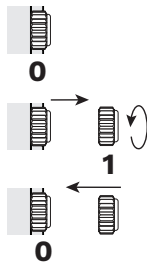
1. Pull the crown to position [3]-(2nd click).
2. Turn the crown clockwise to set the correct time.
3. Push the crown in.



- * Take A.M./P.M. into consideration when setting the hour and minute hands to the desired time.
- * When the crown is at the position [2], do not press any button, otherwise the chronograph hands will move.

HOW TO SET THE DATE

1. Pull the crown to position [2] -(1st click).
2. Turn the crown counter-clockwise to set the correct date.
3. Push the crown in.

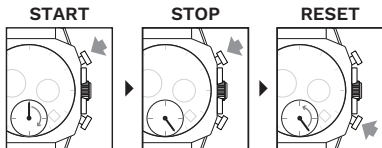


- * Do not set the date between 9:00 P.M. and 1:00 A.M., otherwise the day may not change properly. If it is necessary to set the date during the time period, first change the time to any time outside it, set the date and then reset the correct time.

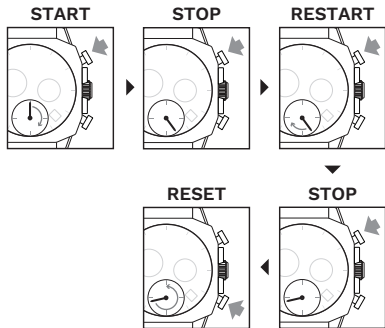
STOPWATCH FUNCTION

- The measurement of time is indicated by the stopwatch hands that move independently of the center hands and 24-hour hand.
- The stopwatch can measure up to 10 minutes.

STANDARD MEASUREMENT

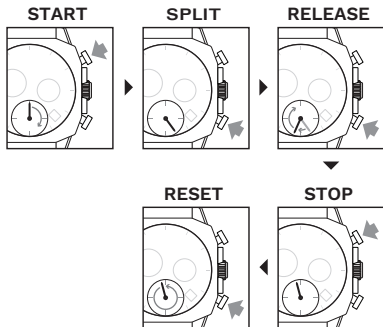


ACCUMULATED ELAPSED TIME MEASUREMENT



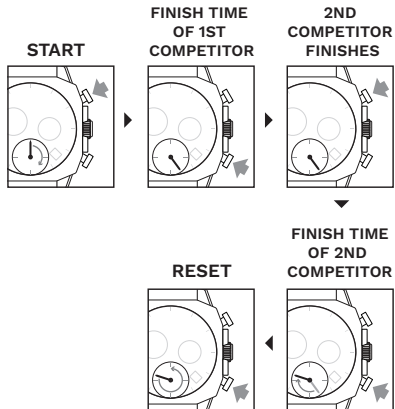
Restart and stop of the stopwatch can be repeated by pressing the button A.

SPLIT TIME MEASUREMENT

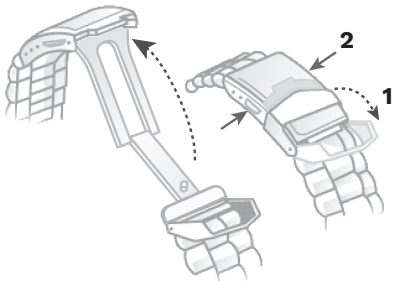


Measurement and release of split time can be repeated as many times as necessary by pressing the button B.

MEASUREMENT OF TWO COMPETITORS



HOW TO USE A DEPLOYANT CLASP

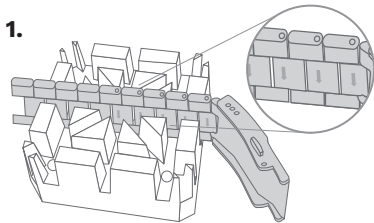


1. Flip the cover.

2. Press the buttons on the clasp sides.

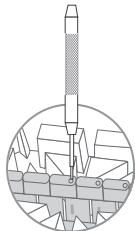
HOW TO RESIZE METAL BRACELET

On the inside of the bracelet, you will see some small arrows engraved on removeable links.

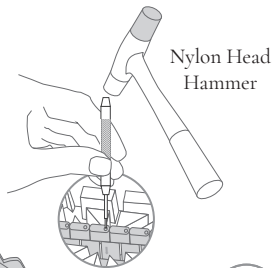


1.

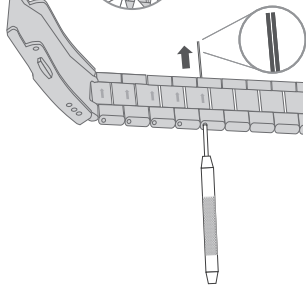
2.



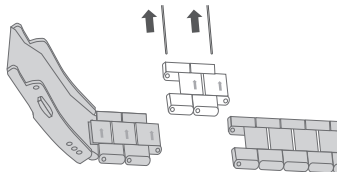
3.



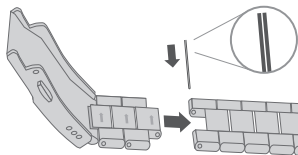
4.



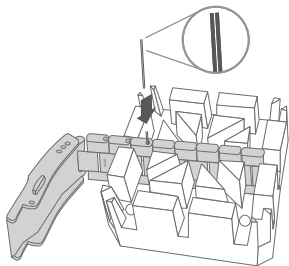
5.



6.

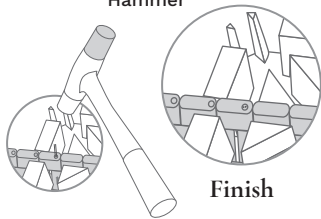


7.



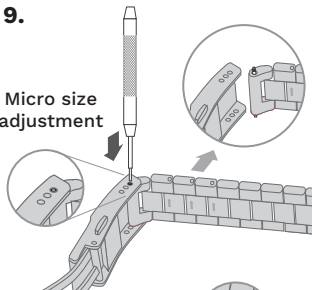
8.

Nylon Head
Hammer

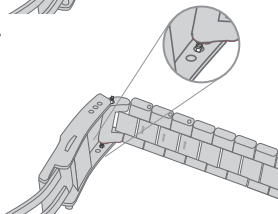


9.

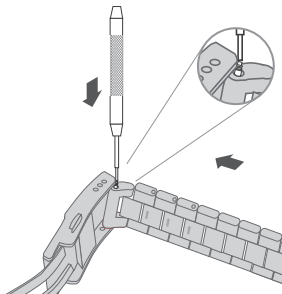
Micro size
adjustment



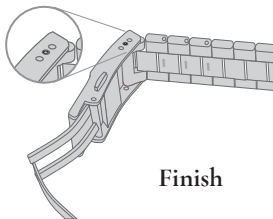
10.



11.



12.







Finish

WATER RESISTANCE

Note that the water resistance chart serves only as a guide (please refer to the water resistance chart on the next page). Actual water resistance may vary depending on a number of factors including water temperature, water salinity and use under water. The water resistance of your timepiece may eventually be compromised over time with general wear and tear and use of your timepiece under adverse conditions.

Note that you should **NEVER** wear your watch in a jacuzzi, hot shower or steam room where steam may enter the case despite the watertight seals used to protect your watch. This may cause condensation inside your watch, which may affect and damage the inner workings of your watch.

WATER RESISTANCE CHART	50M/ 5ATM
SPLASH/ SHOWERING	
SWIMMING/ BATHING	
BRIEF SWIMMING/ WATER SPORTS	
PROLONGED SWIMMING/ FREE DIVING	
SCUBA DIVING	
PROFESSIONAL DEEP SEA DIVING	

Represented By:
Authorised Rep Compliance Ltd.,
Ground Floor, 71 Lower Baggot Street,
Dublin, D02 P593, Ireland.

WARNING

- **INGESTION HAZARD:** This product contains a button cell or coin battery.
- **DEATH** or serious injury can occur if ingested.
- A swallowed button cell or coin battery can cause **Internal Chemical Burns** in as little as **2 hours**.
- **KEEP** new and used batteries **OUT OF REACH** of **CHILDREN**.
- **Seek immediate medical attention** if a battery is suspected to be swallowed or inserted inside any part of the body.



**CE UK
CA**