

 AVI\_8

For more details on operating this timepiece please refer to the enclosed booklet or visit:

**AVI-8.COM**



AVI-8

**HAWKER  
HUNTER**

**RETROGRADE CHRONOGRAPH**

For more information  
Pour plus d'informations  
Para más información  
Per maggiori informazioni  
Für mehr Informationen  
想要查询更多资讯  
詳細については



**Instruction Manual**

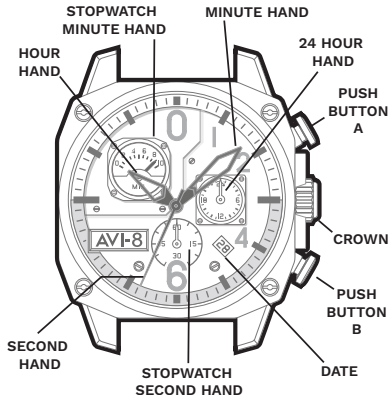
Vol. 1.52 EN

**AV-4052**

# CHRONOGRAPH WATCH

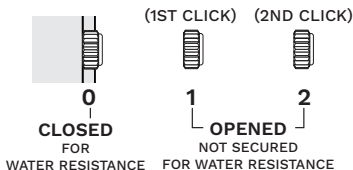
This watch is powered by a quartz Chronograph movement capable of split micro measurements of time.

With pinpoint accuracy you may use this watch to measure separate periods of elapsed time while simultaneously reading the current time.



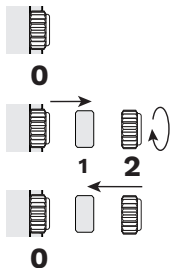
For more details on operating this timepiece please refer to the enclosed booklet or visit:

**AVI-8.COM**



## HOW TO SET THE TIME

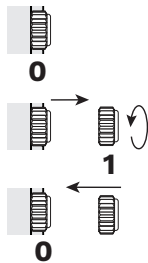
1. Pull the crown to position [2]-(2nd click).
2. Turn the crown clockwise to set the correct time.
3. Push the crown in.



- \* Take A.M./P.M. into consideration when setting the hour and minute hands to the desired time.
- \* When the crown is at the position [2], do not press any button, otherwise the chronograph hands will move.

## HOW TO SET THE DATE

1. Pull the crown to position [1] -(1st click).
2. Turn the crown counter-clockwise to set the correct date.
3. Push the crown in.

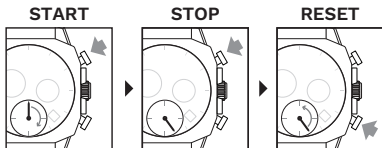


- \* Do not set the date between 9:00 P.M. and 1:00 A.M., otherwise the day may not change properly. If it is necessary to set the date during the time period, first change the time to any time outside it, set the date and then reset the correct time.

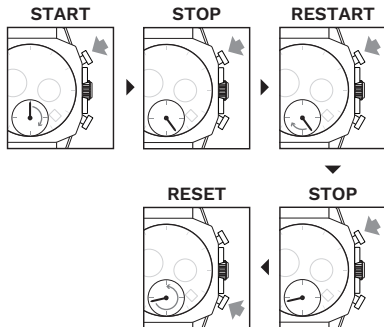
## STOPWATCH FUNCTION

- The measurement of time is indicated by the stopwatch hands that move independently of the center hands and 24-hour hand.
- The stopwatch can measure up to 10 minutes.

### STANDARD MEASUREMENT

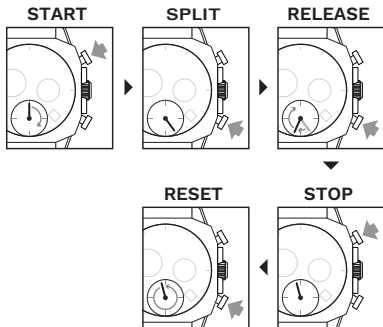


### ACCUMULATED ELAPSED TIME MEASUREMENT



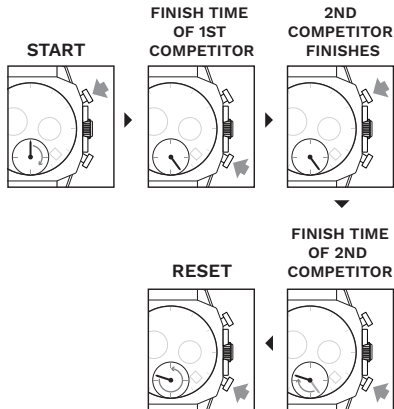
Restart and stop of the stopwatch can be repeated by pressing the button A.

## SPLIT TIME MEASUREMENT

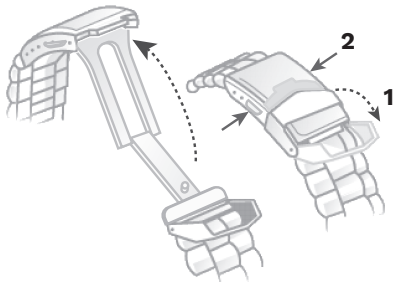


Measurement and release of split time can be repeated as many times as necessary by pressing the button B.

## MEASUREMENT OF TWO COMPETITORS



## HOW TO USE A DEPLOYANT CLASP

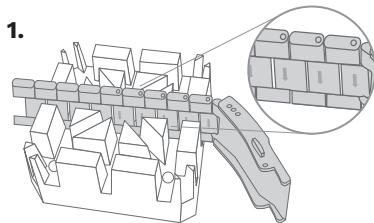


1. Flip the cover.

2. Press the buttons on the clasp sides.

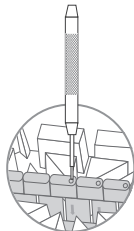
## HOW TO RESIZE METAL BRACELET

On the inside of the bracelet, you will see some small arrows engraved on removeable links.

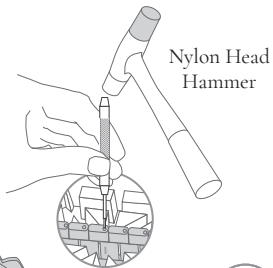


1.

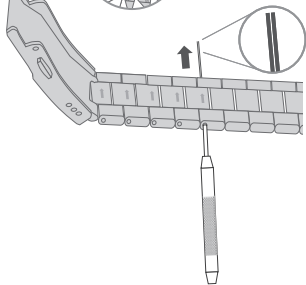
2.



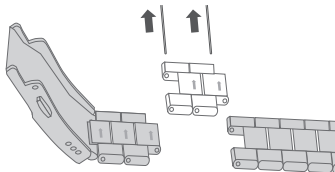
3.



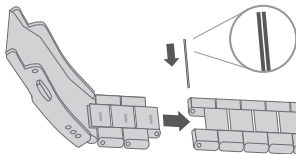
4.



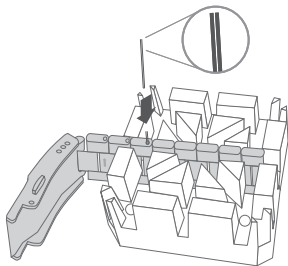
5.



6.

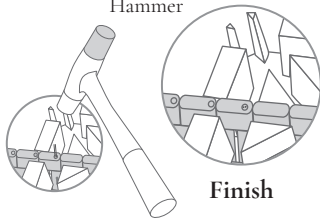


7.

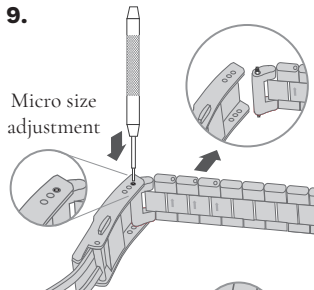


8.

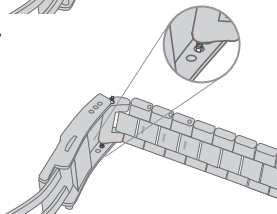
Nylon Head  
Hammer



9.

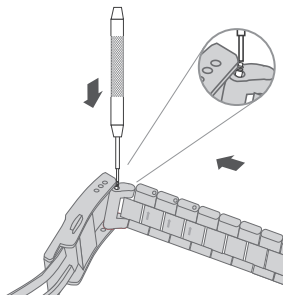


10.

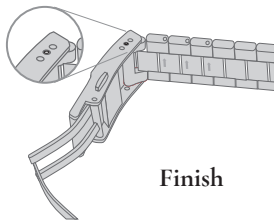




11.



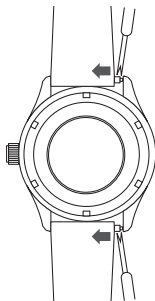
12.



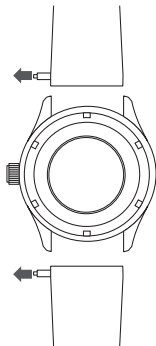
Finish

## HOW TO CHANGE THE STRAPS TO NATO STRAP

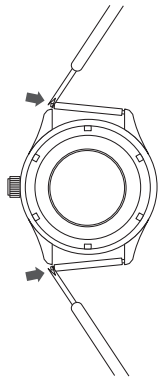
1.



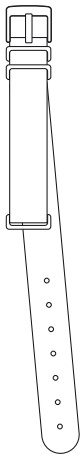
2.



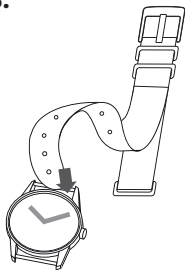
3.



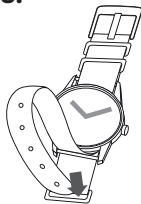
5.



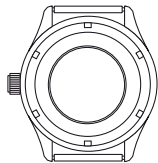
6.



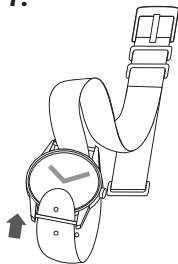
8.



4.



7.





9.



## WATER RESISTANCE

Note that the water resistance chart serves only as a guide (please refer to the water resistance chart on the next page). Actual water resistance may vary depending on a number of factors including water temperature, water salinity and use under water. The water resistance of your timepiece may eventually be compromised over time with general wear and tear and use of your timepiece under adverse conditions.

Note that you should **NEVER** wear your watch in a jacuzzi, hot shower or steam room where steam may enter the case despite the watertight seals used to protect your watch. This may cause condensation inside your watch, which may affect and damage the inner workings of your watch.

| <b>WATER RESISTANCE CHART</b>                  | <b>50M/<br/>5ATM</b>  |
|--|---|
| <b>SPLASH/<br/>SHOWERING</b>                   |  |
| <b>SWIMMING/<br/>BATHING</b>                   |  |
| <b>BRIEF SWIMMING/<br/>WATER SPORTS</b>        |  |
| <b>PROLONGED<br/>SWIMMING/<br/>FREE DIVING</b> |  |
| <b>SCUBA<br/>DIVING</b>                        |  |
| <b>PROFESSIONAL<br/>DEEP SEA DIVING</b>        |  |