

# ALURA

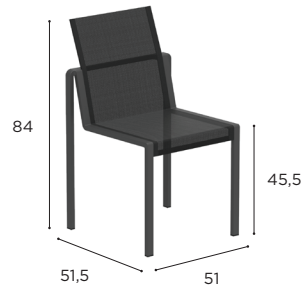
Design by Kris Van Puyvelde



# ALURA SPECIFICATIONS

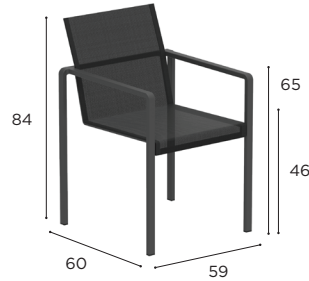
STANDARD / ON REQUEST

DINING CHAIR	
REF:	ALR 47 T...
WEIGHT:	6,4 kg (1)
INFO:	STACKABLE



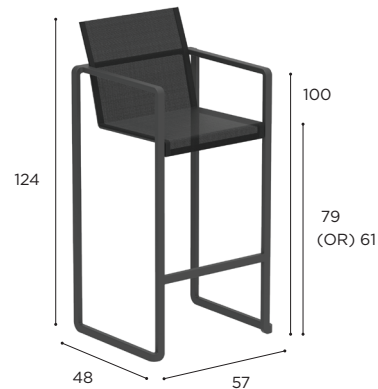
COATED ALUMINIUM					
		W	PB	S	A
BATYLINE	WU	ALR 47 TWWU CHF 569			
	PG		ALR 47 TPBPG CHF 569	ALR 47 TSPG CHF 569	
	ZU				ALR 47 TAZU CHF 569
CUSHIONS					
PIL ALR 47 T ... (SEAT + BACK)					
CAT. A					CHF 130
CAT. B					CHF 156
CAT. C					CHF 182

ARM CHAIR	
REF:	ALR 55 T...
WEIGHT:	9,9 kg (1)
INFO:	STACKABLE OPTIONAL TEAK ARMRESTS



COATED ALUMINIUM					
		W	PB	S	A
BATYLINE	WU	ALR 55 TWWU CHF 629			
	PG		ALR 55 TPBPG CHF 629	ALR 55 TSPG CHF 629	
	ZU				ALR 55 TAZU CHF 629
ALR 55 T ARWSET (TEAK ARMRESTS) CHF 30					
CUSHIONS					
PIL ALR 55 T ... (SEAT + BACK)					
CAT. A					CHF 140
CAT. B					CHF 168
CAT. C					CHF 196

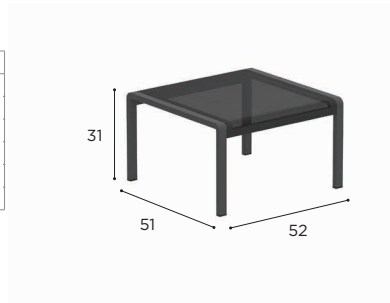
BAR CHAIR	
REF:	ALR 43 T...
WEIGHT:	9,8 kg (1)
INFO:	STACKABLE OPTIONAL TEAK ARMRESTS LOWERED FRAME ON REQUEST



COATED ALUMINIUM					
		W	PB	S	A
BATYLINE	WU	ALR 43 TWWU CHF 799			
	PG		ALR 43 TPBPG CHF 799	ALR 43 TSPG CHF 799	
	ZU				ALR 43 TAZU CHF 799
ALR 43 T ARWSET (TEAK ARMRESTS) CHF 30					
CUSHIONS					
PIL ALR 43 T ... (SEAT + BACK)					
CAT. A					CHF 120
CAT. B					CHF 144
CAT. C					CHF 168
LOWERED FRAME (SURCHARGE) CHF 100					

# ALURA SPECIFICATIONS

FOOTREST	
REF:	ALR F T...
WEIGHT:	3,1 kg (1)
INFO:	STACKABLE



		COATED ALUMINIUM			
		W	PB	S	A
BATYLINE	WU	ALR F TWWU CHF 479			
	PG		ALR F TPBPG CHF 479	ALR F TSPG CHF 479	
	ZU				ALR F TAZU CHF 479

LOW CHAIR	
REF:	ALR 77 T...
WEIGHT:	9,5 kg (1)
INFO:	STACKABLE OPTIONAL TEAK ARMRESTS



		COATED ALUMINIUM			
		W	PB	S	A
BATYLINE	WU	ALR 77 TWWU CHF 749			
	PG		ALR 77 TPBPG CHF 749	ALR 77 TSPG CHF 749	
	ZU				ALR 77 TAZU CHF 749
		ALR 77 T ARWSET CHF 40			
		CUSHIONS			
		PIL ALR 77 T ... (SEAT + BACK)			
CAT. A		CHF 150			
CAT. B		CHF 180			
CAT. C		CHF 210			

LOUNGER	
REF:	ALR 195 T...
WEIGHT:	22,7 kg (1)
INFO:	STACKABLE WHEELS RECLINER PNEUMATIC HEADCUSHION INCLUDED OPTIONAL TEAK ARMRESTS

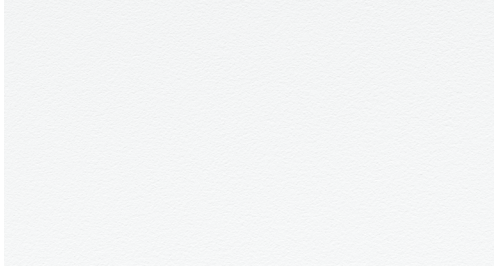


		COATED ALUMINIUM			
		W	PB	S	A
BATYLINE	WU	ALR 195 TWWU CHF 2.299			
	PG		ALR 195 TPBPG CHF 2.299	ALR 195 TSPG CHF 2.299	
	ZU				ALR 195 TAZU CHF 2.299
		ALR 195 T ARWSET CHF 90			
		CUSHIONS			
		PIL ALR 195 T ...			
CAT. A		CHF 390			
CAT. B		CHF 468			
CAT. C		CHF 546			

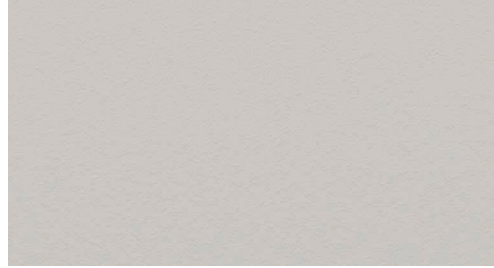


## POWDER COATING COLOURS

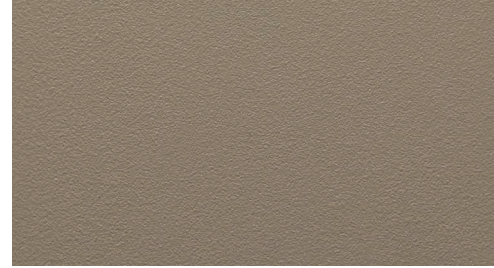
WHITE  
REF: WR



PEBBLE  
REF: PB



SAND  
REF: S



BRONZE  
REF: BR



ANTHRACITE  
REF: A



OLIVE  
REF: OL



## FIBER

OLEFIN FIBER IS A SYNTHETIC FIBER MADE FROM POLYPROPYLENE. THE ADVANTAGE OF THIS FIBER IS ITS STRENGTH, COLOUR FASTNESS AND COMFORT. ALSO IT IS VERY RESISTANT TO STAINING AND DIFFERENT WEATHER CONDITIONS.

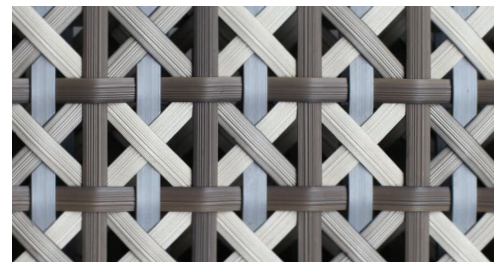
JIVE COLLECTION (OLEFIN FIBER)



SAMBA COLLECTION (OLEFIN FIBER)



CALYPSO COLLECTION (POLYTHYLENE FIBER)



FENSI COLLECTION



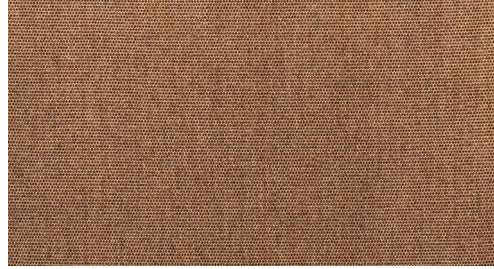


## CATEGORY A FABRICS ACRYLIC

WHITE  
REF: ...WU - CAT.: A - ACRYLIC



COCONUT  
REF: ...CC - CAT.: A - ACRYLIC



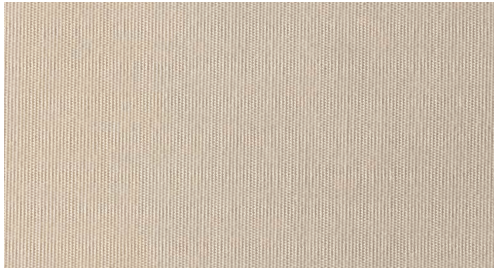
CAPPUCCINO  
REF: ...CAU - CAT.: A - ACRYLIC



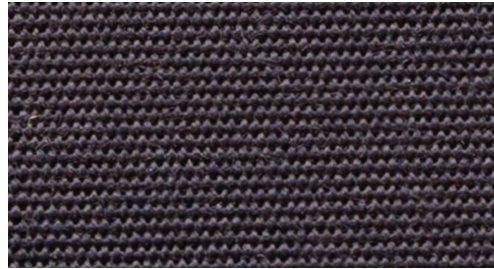
ROCK  
REF: ...ROU - CAT.: A - ACRYLIC



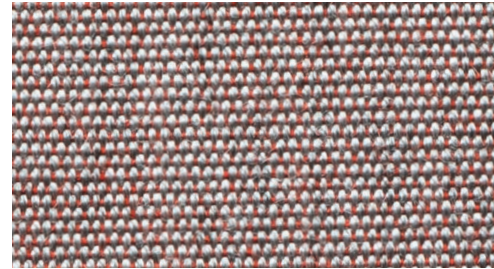
ECRU  
REF: ...EU - CAT.: A - ACRYLIC



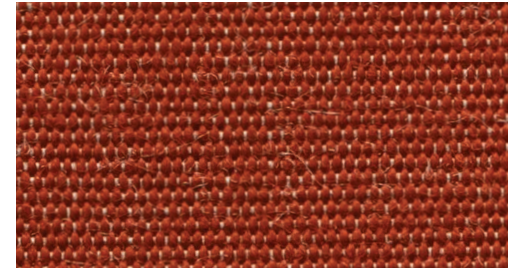
NAVY BLUE  
REF: ...NBU - CAT.: A - ACRYLIC



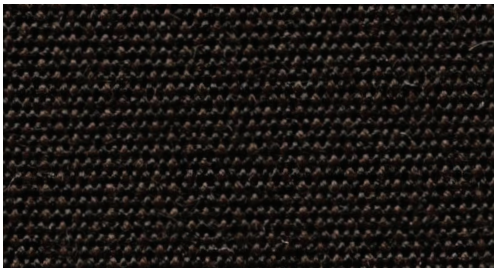
ROSE  
REF: ...RO - CAT.: A - ACRYLIC



TERRA  
REF: ...TER - CAT.: A - ACRYLIC



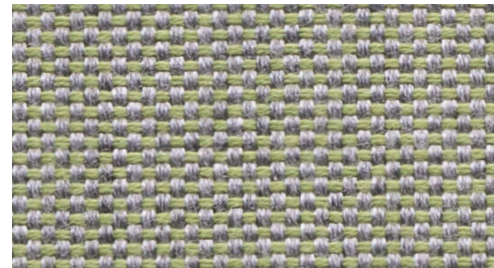
BLACK  
REF: ...ZU - CAT.: A - ACRYLIC



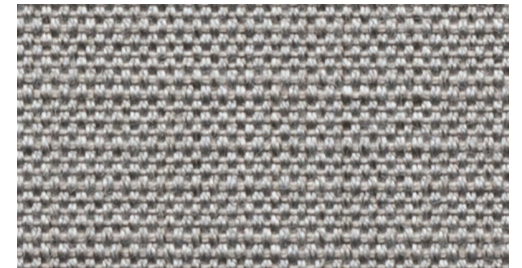
CHOCOLAT LINEN  
REF: ...CHL - CAT.: A - ACRYLIC



SAGE LINEN  
REF: ...SL - CAT.: A - ACRYLIC



FROST LINEN  
REF: ...FL - CAT.: A - ACRYLIC





## CATEGORY B FABRICS ACRYLIC & POLYPROPYLENE

WHITE HEAVY  
REF: ...WAH - CAT.: B - POLYPROPYLENE



LIGHT BLUE HEAVY  
REF: ...LBH - CAT.: B - POLYPROPYLENE



AZURE BLUE HEAVY  
REF: ...AZH - CAT.: B - POLYPROPYLENE



ROCK HEAVY  
REF: ...ROH - CAT.: B - POLYPROPYLENE



SAND HEAVY  
REF: ...SAH - CAT.: B - POLYPROPYLENE



SAFFRON HEAVY  
REF: ...SFH - CAT.: B - POLYPROPYLENE



RED WINE HEAVY  
REF: ...RWH - CAT.: B - POLYPROPYLENE



CARMINE HEAVY  
REF: ...CH - CAT.: B - POLYPROPYLENE



MOSS HEAVY  
REF: ...MH - CAT.: B - POLYPROPYLENE



CARAMEL HEAVY  
REF: ...CAH - CAT.: B - POLYPROPYLENE



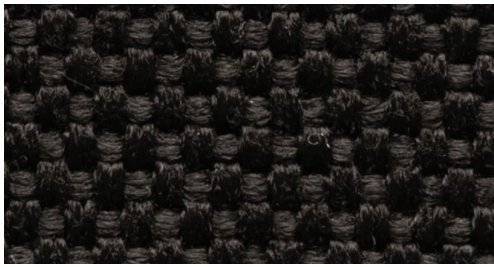
AUBERGINE HEAVY  
REF: ...AUH - CAT.: B - POLYPROPYLENE



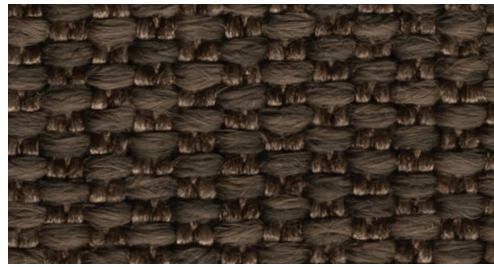
GRANITE HEAVY  
REF: ...GRH - CAT.: B - POLYPROPYLENE



PITCH BLACK HEAVY  
REF: ...ZUPH - CAT.: B - POLYPROPYLENE



DARK BROWN TWIN  
REF: ...DBT - CAT.: B - POLYPROPYLENE



WHITE TWIN  
REF: ...WUT - CAT.: B - POLYPROPYLENE





## CATEGORY B FABRICS ACRYLIC & POLYPROPYLENE

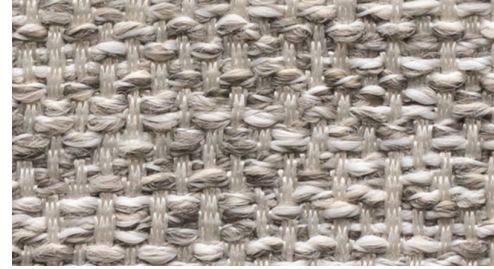
NATURAL WHITE DOT  
REF: ...NWD - CAT.: B - POLYPROPYLENE



NATURAL GREY DOT  
REF: ...NGD - CAT.: B - POLYPROPYLENE



NATURAL SILVER DOT  
REF: ...NSD CAT.: B - POLYPROPYLENE



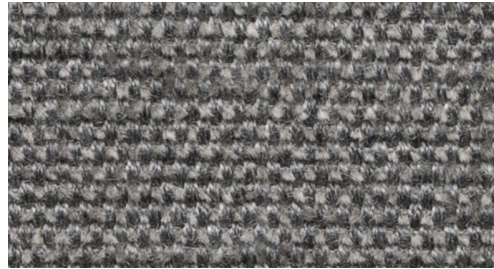
NATURAL ECRU DOT  
REF: ...NED - CAT.: B - POLYPROPYLENE



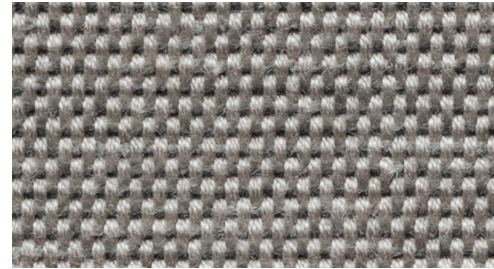
NATURAL LINEN DOT  
REF: ...NLD - CAT.: B - POLYPROPYLENE



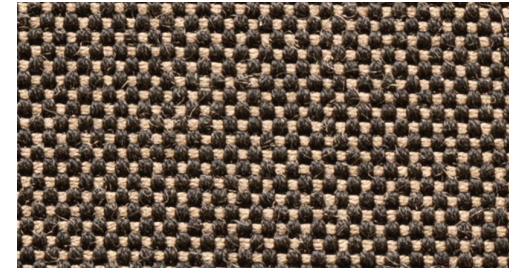
STONE FLAX  
REF: ...SF - CAT.: B - ACRYLIC



DESERT STONE FLAX  
REF: ...DSF - CAT.: B - ACRYLIC

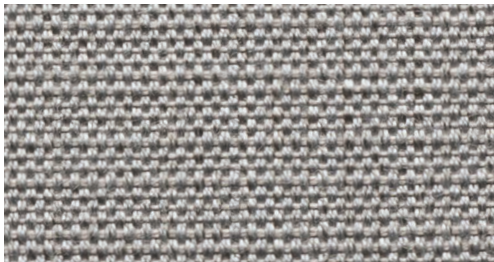


MARBLE FLAX  
REF: ...MAF - CAT.: B - ACRYLIC



## CATEGORY B/C LAMINATED FABRICS ACRYLIC

FROST LINEN LAMINATED  
REF: ...FLL - CAT.: B - ACRYLIC



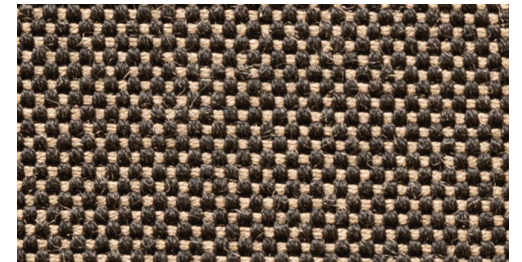
TUXEDO LINEN LAMINATED  
REF: ...TULL - CAT.: B - ACRYLIC



DESERT STONE FLAX LAMINATED  
REF: ...DSFL CAT.: C - ACRYLIC



MARBLE FLAX LAMINATED  
REF: ...MAFL CAT.: C - ACRYLIC



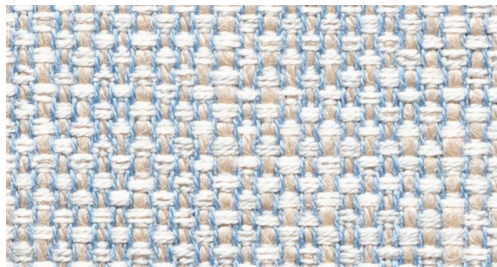


## CATEGORY C FABRICS ACRYLIC & POLYPROPYLENE

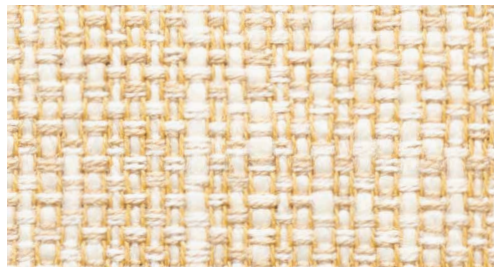
PASTEL SAND  
REF: ...PAS - CAT.: C - ACRYLIC



PASTEL BLUE  
REF: ...PAB - CAT.: C - ACRYLIC



PASTEL YELLOW  
REF: ...PAY - CAT.: C - ACRYLIC



PASTEL COCONUT  
REF: ...PAC - CAT.: C - ACRYLIC



PASTEL GREEN  
REF: ...PAG - CAT.: C - ACRYLIC



PASTEL ORANGE  
REF: ...PAO - CAT.: C - ACRYLIC



PASTEL RED  
REF: ...PAR - CAT.: C - ACRYLIC



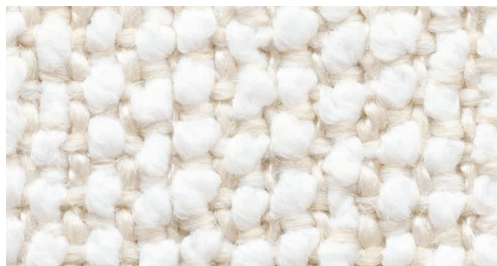
MOSS  
REF: ...MOS - CAT.: C - POLYPROPYLENE



BOUCLE SAND  
REF: ...BOS - CAT.: C - POLYPROPYLENE



BOUCLE WHITE  
REF: ...BOW - CAT.: C - POLYPROPYLENE



BOUCLE GREY  
REF: ...BOG - CAT.: C - POLYPROPYLENE



BOUCLE BLUE  
REF: ...BOB - CAT.: C - POLYPROPYLENE



ECRU LINEN  
REF: ...EUL - CAT.: C - ACRYLIC



JUNIPER GREEN  
REF: ...JG - CAT.: C - ACRYLIC



AUBERGINE MESH  
REF: ...AUM - CAT.: C - ACRYLIC



NIGHT BLUE  
REF: ...NB - CAT.: C - ACRYLIC





## CATEGORY C FABRICS ACRYLIC & POLYPROPYLENE

VANILLE VELVET  
REF: ...VAV - CAT.: C - ACRYLIC



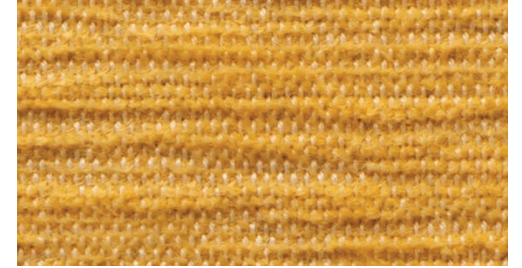
ECRU VELVET  
REF: ...EUV - CAT.: C - ACRYLIC



SALMON VELVET  
REF: ...SAV - CAT.: C - ACRYLIC



SAFFRON VELVET  
REF: ...SFV - CAT.: C - ACRYLIC



DARK BROWN VELVET  
REF: ...DBV - CAT.: C - ACRYLIC



TERRA VELVET  
REF: ...TEV - CAT.: C - ACRYLIC



AUBERGINE VELVET  
REF: ...AUV - CAT.: C - ACRYLIC



ICE BLUE VELVET  
REF: ...IBV - CAT.: C - ACRYLIC



SILVER VELVET  
REF: ...SIV - CAT.: C - ACRYLIC



IRON GREY VELVET  
REF: ...IGV - CAT.: C - ACRYLIC



ORANGE CHEVRON  
REF: ...ORC - CAT.: C - POLYPROPYLENE



OLD ROSE  
REF: ...OLR - CAT.: C - POLYPROPYLENE



LIGHT BOUCLE WHITE  
REF: ...LBW - CAT.: C - POLYPROPYLENE



LIGHT BOUCLE SAND  
REF: ...LBS - CAT.: C - ACRYLIC



LIGHT BOUCLE GREY  
REF: ...LBG - CAT.: C - POLYPROPYLENE



GREY MESH  
REF: ...GM - CAT.: C - ACRYLIC



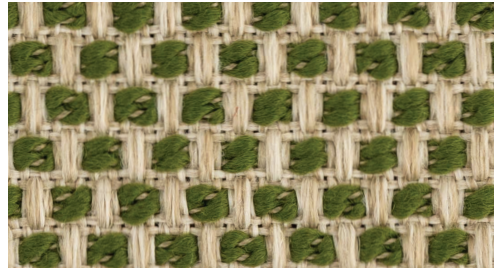


## CATEGORY C FABRICS ACRYLIC & POLYPROPYLENE

CAMEL MESH  
REF: ...CM - CAT.: C - POLYPROPYLENE



MOSS MESH  
REF: ...MM - CAT.: C - POLYPROPYLENE



SAND MESH  
REF: ...SM - CAT.: C - POLYPROPYLENE



## CATEGORY C FABRICS POLYSKIN

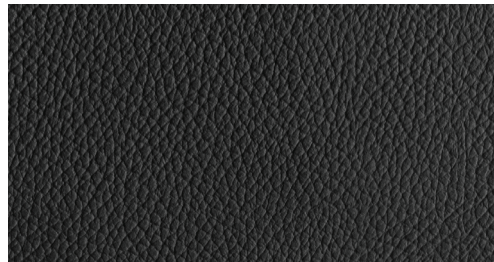
ONLY AVAILABLE FOR STRAPPY, STYLETTO & OSTREA COLLECTION!

POLYSKIN IS A SYNTHETIC ALL WEATHER LEATHER IMITATION THAT IS EXTREMELY UV AND WATER RESISTANT.

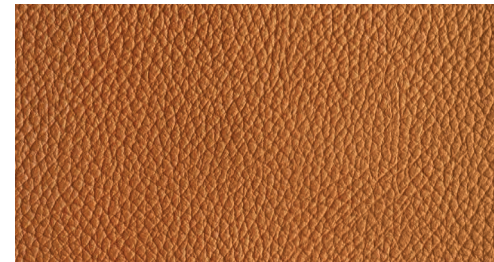
CAPPUCCINO  
REF: ...SCA - CAT.: C - POLYSKIN



BLACK  
REF: ...SBL - CAT.: C - POLYSKIN



COGNAC  
REF: ...SCO - CAT.: C - POLYSKIN





## BATYLINE

THE SLINGS ON METAL FRAMED CHAIRS AND LOUNGERS ARE MADE OF BATYLINE® FABRICS, A WOVEN POLYESTER FIBER PROTECTED BY A PVC COATING. THIS COATING GUARANTEES EXCEPTIONAL RESISTANCE TO CLIMATIC CONDITIONS AND UV EXPOSURE. THE FACT THAT THERE IS NO MOISTURE ABSORPTION RESULTS IN QUICK-DRYING, LITTLE SENSITIVITY TO STAINING AND EASY CLEANING.

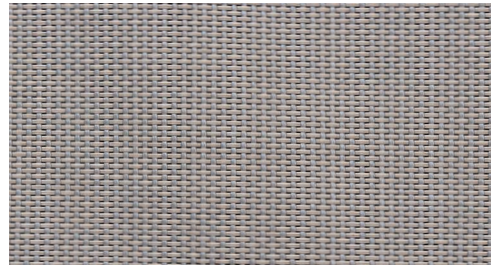
WHITE  
REF: ...WU



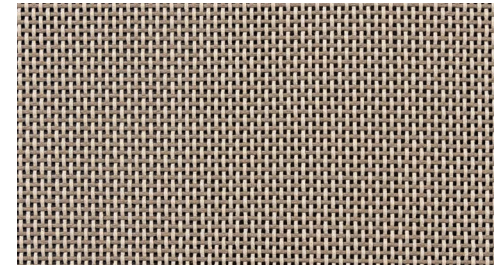
WHITE (FOR NNX(L) - OZN - WV)  
REF: ...WUC



PEARL GREY  
REF: ...PG



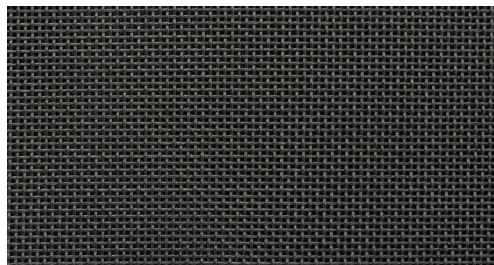
CAPPUCCINO  
REF: ...CAU



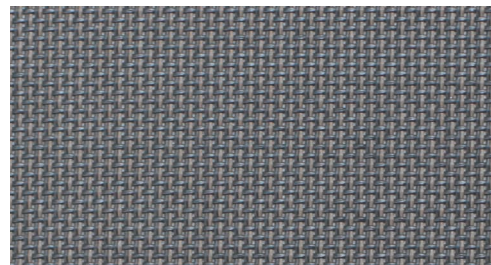
BLACK  
REF: ...ZU



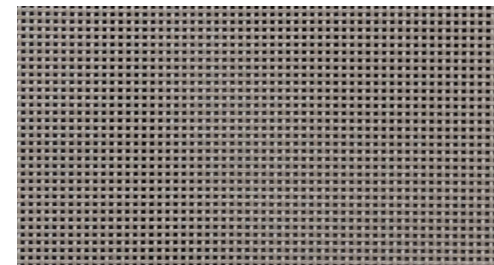
BLACK (FOR NNX(L) - OZN - WV)  
REF: ...ZUC



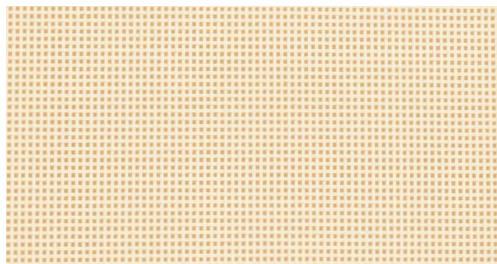
GRAPHITE  
REF: ...GRP



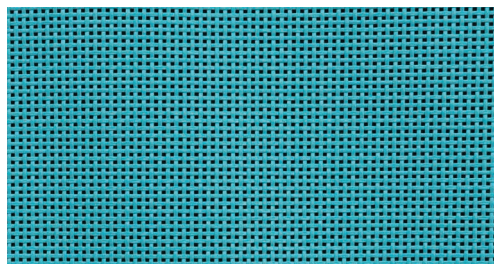
BROWN  
REF: ...BRU



ECRU  
REF: ...EU



TURQUOISE  
REF: ...TQF



ORANGE  
REF: ...ORU

