

**NINIX**

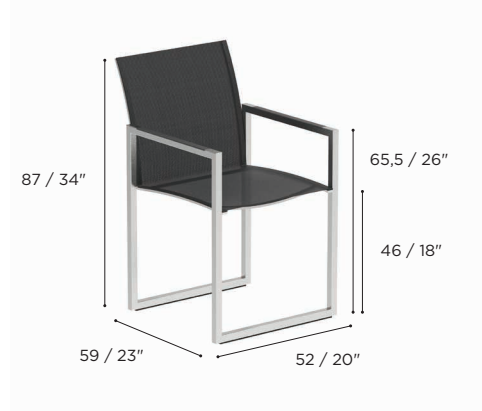
Design by Kris Van Puyvelde



# NINIX SPECIFICATIONS

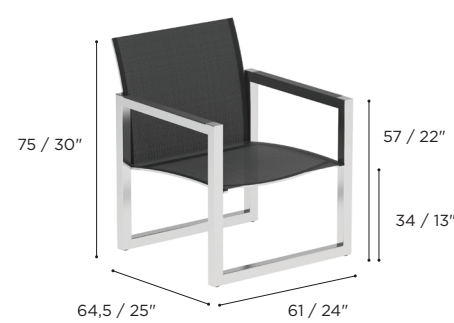
STANDARD / ON REQUEST

| DINING CHAIR |  |
|--------------|--|
| REF:         | NNX 55T...   |
| WEIGHT:      | 10 kg / 22 Lbs   |
| INFO:        | OPTIONAL TEAK ARMRESTS<br>BRONZE FRAME INCLUDES<br>OILED TEAK ARMRESTS |



|                                |     | BRUSHED STAINLESS STEEL | ELECTROPOLISHED STAINLESS STEEL | COATED STAINLESS STEEL |              |             |               |             |
|--------------------------------|-----|-------------------------|---------------------------------|------------------------|--------------|-------------|---------------|-------------|
|                                |     | SS                      | EP                              | W                      | PB           | S           | BR            | A           |
| BATYLINE                       | WU  | NNX 55 TWU              | NNX 55 TEPWU                    | NNX 55 TWWU            |              |             |               |             |
|                                | CAU | NNX 55 TCAU             | NNX 55 TEPCAU                   |                        |              |             |               |             |
|                                | PG  |                         |                                 |                        | NNX 55 TPBPG | NNX 55 TSPG |               |             |
|                                | ZU  | NNX 55 TZU              | NNX 55 TEPZU                    |                        |              |             |               | NNX 55 TAZU |
|                                | GRP |                         |                                 |                        |              |             | NNX 55 TBRGRP |             |
| NNX 55T ARWSET (TEAK ARMRESTS) |     |                         |                                 |                        |              |             |               |             |
| CUSHIONS                       |     |                         |                                 |                        |              |             |               |             |
| PIL NNX55T ... (SEAT + BACK)   |     |                         |                                 |                        |              |             |               |             |
| CAT. A                         |     |                         |                                 |                        |              |             |               |             |
| CAT. B                         |     |                         |                                 |                        |              |             |               |             |
| CAT. C                         |     |                         |                                 |                        |              |             |               |             |

| LOW CHAIR |  |
|-----------|--|
| REF:      | NNX 77T...   |
| WEIGHT:   | 12 kg / 26,4 Lbs   |
| INFO:     | OPTIONAL TEAK ARMRESTS<br>BRONZE FRAME INCLUDES<br>OILED TEAK ARMRESTS |



|                                |     | BRUSHED STAINLESS STEEL | ELECTROPOLISHED STAINLESS STEEL | COATED STAINLESS STEEL |              |             |               |             |
|--------------------------------|-----|-------------------------|---------------------------------|------------------------|--------------|-------------|---------------|-------------|
|                                |     | SS                      | EP                              | W                      | PB           | S           | BR            | A           |
| BATYLINE                       | WU  | NNX 77 TWU              | NNX 77 TEPWU                    | NNX 77 TWWU            |              |             |               |             |
|                                | CAU | NNX 77 TCAU             | NNX 77 TEPCAU                   |                        |              |             |               |             |
|                                | PG  |                         |                                 |                        | NNX 77 TPBPG | NNX 77 TSPG |               |             |
|                                | ZU  | NNX 77 TZU              | NNX 77 TEPZU                    |                        |              |             |               | NNX 77 TAZU |
|                                | GRP |                         |                                 |                        |              |             | NNX 77 TBRGRP |             |
| NNX 77T ARWSET (TEAK ARMRESTS) |     |                         |                                 |                        |              |             |               |             |
| CUSHIONS                       |     |                         |                                 |                        |              |             |               |             |
| PIL NNX77T ... (SEAT + BACK)   |     |                         |                                 |                        |              |             |               |             |
| CAT. A                         |     |                         |                                 |                        |              |             |               |             |
| CAT. B                         |     |                         |                                 |                        |              |             |               |             |
| CAT. C                         |     |                         |                                 |                        |              |             |               |             |

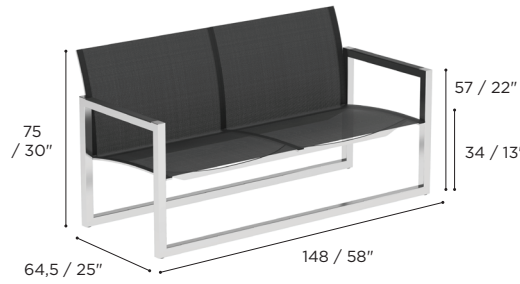
| FOOTREST |                 |
|----------|-----------------|
| REF:     | NNX FT...       |
| WEIGHT:  | 9 kg / 19,8 Lbs |



|          |     | BRUSHED STAINLESS STEEL | ELECTROPOLISHED STAINLESS STEEL | COATED STAINLESS STEEL |             |            |              |            |
|----------|-----|-------------------------|---------------------------------|------------------------|-------------|------------|--------------|------------|
|          |     | SS                      | EP                              | W                      | PB          | S          | BR           | A          |
| BATYLINE | WU  | NNX F TWU               | NNX F TEPWU                     | NNX F TWWU             |             |            |              |            |
|          | CAU | NNX F TCAU              | NNX F TEPCAU                    |                        |             |            |              |            |
|          | PG  |                         |                                 |                        | NNX F TPBPG | NNX F TSPG |              |            |
|          | ZU  | NNX F TZU               | NNX F TEPZU                     |                        |             |            |              | NNX F TAZU |
|          | GRP |                         |                                 |                        |             |            | NNX F TBRGRP |            |

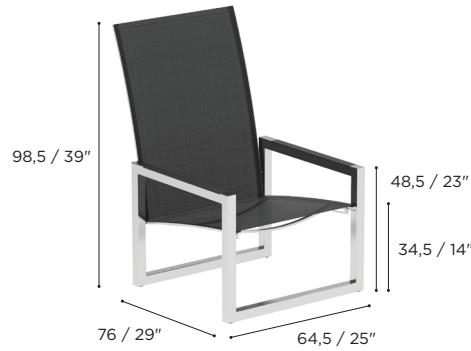
# NINIX SPECIFICATIONS

| LOW BENCH |  |
|-----------|--|
| REF:      | NNX 154T...  |
| WEIGHT:   | 27 kg / 59,52 Lbs  |
| INFO:     | OPTIONAL TEAK ARMRESTS<br>BRONZE FRAME INCLUDES<br>OILED TEAK ARMRESTS |



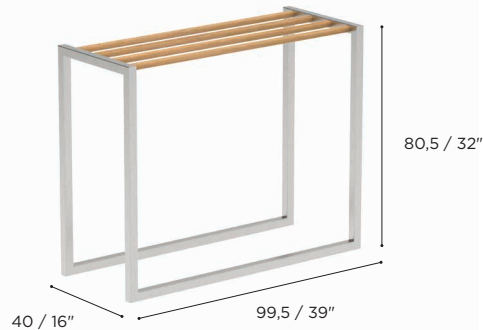
|                                 |     | BRUSHED STAINLESS STEEL | ELECTROPOLISHED STAINLESS STEEL | COATED STAINLESS STEEL |               |              |                |              |
|---------------------------------|-----|-------------------------|---------------------------------|------------------------|---------------|--------------|----------------|--------------|
|                                 |     | SS                      | EP                              | W                      | PB            | S            | BR             | A            |
| BATYLINE                        | WU  | NNX 154 TWU             | NNX 154 TEPWU                   | NNX 154 TWWU           |               |              |                |              |
|                                 | CAU | NNX 154 TCAU            | NNX 154 TEPCAU                  |                        |               |              |                |              |
|                                 | PG  |                         |                                 |                        | NNX 154 TPBPG | NNX 154 TSPG |                |              |
|                                 | ZU  | NNX 154 TZU             | NNX 154 TEPZU                   |                        |               |              |                | NNX 154 TAZU |
|                                 | GRP |                         |                                 |                        |               |              | NNX 154 TBRGRP |              |
| NNX 154T ARWSET (TEAK ARMRESTS) |     |                         |                                 |                        |               |              |                |              |
| CUSHIONS                        |     |                         |                                 |                        |               |              |                |              |
| PIL NNX154T ... (SEAT + BACK)   |     |                         |                                 |                        |               |              |                |              |
| CAT. A                          |     |                         |                                 |                        |               |              |                |              |
| CAT. B                          |     |                         |                                 |                        |               |              |                |              |
| CAT. C                          |     |                         |                                 |                        |               |              |                |              |

| RELAX CHAIR |  |
|-------------|--|
| REF:        | NNX 60T...   |
| WEIGHT:     | 12,5 kg / 33,4 Lbs   |
| INFO:       | HEADCUSHION INCLUDED<br>OPTIONAL TEAK ARMRESTS<br>BRONZE FRAME INCLUDES<br>OILED TEAK ARMRESTS<br>RECLINER<br>WHEELS |



|                                |     | BRUSHED STAINLESS STEEL | ELECTROPOLISHED STAINLESS STEEL | COATED STAINLESS STEEL |              |             |               |             |
|--------------------------------|-----|-------------------------|---------------------------------|------------------------|--------------|-------------|---------------|-------------|
|                                |     | SS                      | EP                              | W                      | PB           | S           | BR            | A           |
| BATYLINE                       | WU  | NNX 60 TWU              | NNX 60 TEPWU                    | NNX 60 TWWU            |              |             |               |             |
|                                | CAU | NNX 60 TCAU             | NNX 60 TEPCAU                   |                        |              |             |               |             |
|                                | PG  |                         |                                 |                        | NNX 60 TPBPG | NNX 60 TSPG |               |             |
|                                | ZU  | NNX 60 TZU              | NNX 60 TEPZU                    |                        |              |             |               | NNX 60 TAZU |
|                                | GRP |                         |                                 |                        |              |             | NNX 60 TBRGRP |             |
| NNX 60T ARWSET (TEAK ARMRESTS) |     |                         |                                 |                        |              |             |               |             |
| CUSHIONS                       |     |                         |                                 |                        |              |             |               |             |
| PIL NNX60T ... (SEAT + BACK)   |     |                         |                                 |                        |              |             |               |             |
| CAT. A                         |     |                         |                                 |                        |              |             |               |             |
| CAT. B                         |     |                         |                                 |                        |              |             |               |             |
| CAT. C                         |     |                         |                                 |                        |              |             |               |             |

| TOWEL RACK |               |
|------------|---------------|
| REF:       | NNX TR...     |
| WEIGHT:    | 9 kg / 20 Lbs |

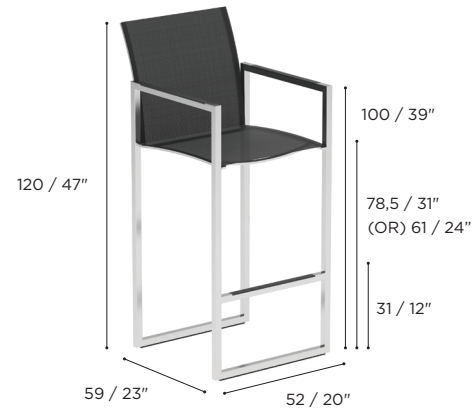


|      |   | BRUSHED STAINLESS STEEL | ELECTROPOLISHED STAINLESS STEEL | COATED STAINLESS STEEL |           |          |           |          |
|------|---|-------------------------|---------------------------------|------------------------|-----------|----------|-----------|----------|
|      |   | SS                      | EP                              | W                      | PB        | S        | BR        | A        |
| TEAK | W | NNX TR                  | NNX TR EP                       | NNX TR W               | NNX TR PB | NNX TR S | NNX TR BR | NNX TR A |

# NINIX SPECIFICATIONS

STANDARD / ON REQUEST

| BAR CHAIR |   |
|-----------|---|
| REF:      | NNX 43T...  |
| WEIGHT:   | 11,8 kg / 26 Lbs  |
| INFO:     | OPTIONAL TEAK ARMRESTS<br>BRONZE FRAME INCLUDES<br>OILED TEAK ARMRESTS<br>LOWERED FRAME<br>ON REQUEST |



|                                |     | BRUSHED STAINLESS STEEL | ELECTROPOLISHED STAINLESS STEEL | COATED STAINLESS STEEL |              |             |               |             |
|--------------------------------|-----|-------------------------|---------------------------------|------------------------|--------------|-------------|---------------|-------------|
|                                |     | SS                      | EP                              | W                      | PB           | S           | BR            | A           |
| BATYLINE                       | WU  | NNX 43 TWU              | NNX 43 TEPWU                    | NNX 43 TWWU            |              |             |               |             |
|                                | CAU | NNX 43 TCAU             | NNX 43 TEPCAU                   |                        |              |             |               |             |
|                                | PG  |                         |                                 |                        | NNX 43 TPBPG | NNX 43 TSPG |               |             |
|                                | ZU  | NNX 43 TZU              | NNX 43 TEPZU                    |                        |              |             |               | NNX 43 TAZU |
|                                | GRP |                         |                                 |                        |              |             | NNX 43 TBRGRP |             |
| NNX 43T ARWSET (TEAK ARMRESTS) |     |                         |                                 |                        |              |             |               |             |
| CUSHIONS                       |     |                         |                                 |                        |              |             |               |             |
| PIL NNX55T ... (SEAT + BACK)   |     |                         |                                 |                        |              |             |               |             |
| CAT. A                         |     |                         |                                 |                        |              |             |               |             |
| CAT. B                         |     |                         |                                 |                        |              |             |               |             |
| CAT. C                         |     |                         |                                 |                        |              |             |               |             |
| LOWERED FRAME (SURCHARGE)      |     |                         |                                 |                        |              |             |               |             |

| LOUNGER |  |
|---------|--|
| REF:    | NNX 195T...  |
| WEIGHT: | 25 kg / 55,1 Lbs   |
| INFO:   | HEADCUSHION INCLUDED<br>OPTIONAL TEAK ARMRESTS<br>BRONZE FRAME INCLUDES<br>OILED TEAK ARMRESTS<br>PNEUMATIC RECLINER<br>WHEELS |

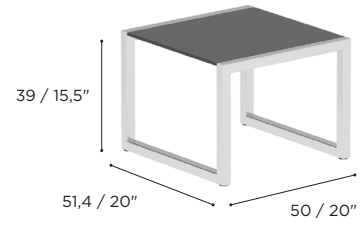


|                                 |     | BRUSHED STAINLESS STEEL | ELECTROPOLISHED STAINLESS STEEL | COATED STAINLESS STEEL |               |              |                |              |
|---------------------------------|-----|-------------------------|---------------------------------|------------------------|---------------|--------------|----------------|--------------|
|                                 |     | SS                      | EP                              | W                      | PB            | S            | BR             | A            |
| BATYLINE                        | WU  | NNX 195 TWU             | NNX 195 TEPWU                   | NNX 195 TWWU           |               |              |                |              |
|                                 | CAU | NNX 195 TCAU            | NNX 195 TEPCAU                  |                        |               |              |                |              |
|                                 | PG  |                         |                                 |                        | NNX 195 TPBPG | NNX 195 TSPG |                |              |
|                                 | ZU  | NNX 195 TZU             | NNX 195 TEPZU                   |                        |               |              |                | NNX 195 TAZU |
|                                 | GRP |                         |                                 |                        |               |              | NNX 195 TBRGRP |              |
| NNX 195T ARWSET (TEAK ARMRESTS) |     |                         |                                 |                        |               |              |                |              |
| CUSHIONS                        |     |                         |                                 |                        |               |              |                |              |
| PIL NNX195T ...                 |     |                         |                                 |                        |               |              |                |              |
| CAT. A                          |     |                         |                                 |                        |               |              |                |              |
| CAT. B                          |     |                         |                                 |                        |               |              |                |              |
| CAT. C                          |     |                         |                                 |                        |               |              |                |              |



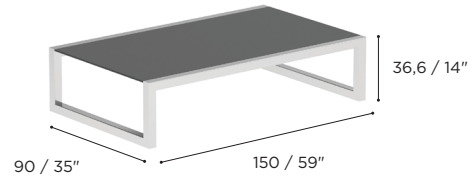
# NINIX SPECIFICATIONS

| SIDE TABLE |  |
|------------|--|
| REF:       | NNX 50...                                |
| WEIGHT:    | C: 10 kg / 22 Lbs<br>W: 7,5 kg / 7,5 Lbs |



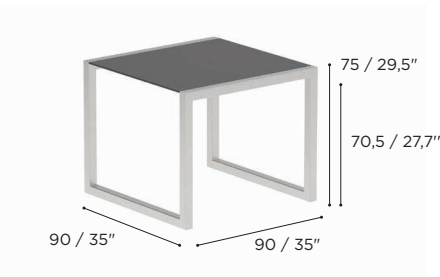
|         |      | BRUSHED STAINLESS STEEL | ELECTROPOLISHED STAINLESS STEEL | COATED STAINLESS STEEL |              |             |              |             |           |
|---------|------|-------------------------|---------------------------------|------------------------|--------------|-------------|--------------|-------------|-----------|
|         |      | SS                      | EP                              | W                      | PB           | S           | BR           | A           |           |
| CERAMIC | WU   | NNX 50 CWU              | NNX 50 CEPWU                    | NNX 50 CWWU            |              |             |              |             |           |
|         | CD   | NNX 50 CCD              | NNX 50 CEPCD                    | NNX 50 CWCD            | NNX 50 CPBCD | NNX 50 CSCD | NNX 50 CBRCD | NNX 50 CACD |           |
|         | CL   | NNX 50 CCL              | NNX 50 CEPCL                    | NNX 50 CWCL            | NNX 50 CPBCL | NNX 50 CSCL | NNX 50 CBRCL | NNX 50 CACL |           |
|         | TR   | NNX 50 CTR              | NNX 50 CEPTR                    |                        |              |             |              |             |           |
|         | TG   | NNX 50 CTG              | NNX 50 CEPTG                    |                        |              |             |              |             |           |
|         | PG   |                         | NNX 50 CEPPG                    |                        | NNX 50 CPBPG | NNX 50 CSPG |              |             |           |
|         | TS   | NNX 50 CTS              | NNX 50 CEPTS                    | NNX 50 CWTS            | NNX 50 CPBTS | NNX 50 CSTS | NNX 50 CBRTS | NNX 50 CATS |           |
|         | TM   | NNX 50 CTM              | NNX 50 CEPTM                    | NNX 50 CWTM            | NNX 50 CPBTM | NNX 50 CSTM | NNX 50 CBRTM | NNX 50 CATM |           |
|         | NM   | NNX 50 CNM              | NNX 50 CEPNM                    |                        |              |             | NNX 50 CBRNM | NNX 50 CANM |           |
|         | ZU   | NNX 50 CZU              | NNX 50 CEPZU                    |                        |              |             |              | NNX 50 CAZU |           |
|         | TEAK | W                       | NNX 50                          | NNX 50 EP              | NNX 50 WW    | NNX 50 WPB  | NNX 50 WS    | NNX 50 WBR  | NNX 50 WA |

| LOW SIDE TABLE |   |
|----------------|---|
| REF:           | NNX 150T...                               |
| VOLUME:        | 0,55 m <sup>3</sup> / 19,4 Cbft           |
| WEIGHT:        | C: 48 kg / 106 Lbs<br>W: 33 kg / 72,6 Lbs |



|         |      | BRUSHED STAINLESS STEEL | ELECTROPOLISHED STAINLESS STEEL | COATED ALUMINIUM |                |               |                |               |             |
|---------|------|-------------------------|---------------------------------|------------------|----------------|---------------|----------------|---------------|-------------|
|         |      | SS                      | EP                              | W                | PB             | S             | BR             | A             |             |
| CERAMIC | WU   | NNX 150T CWU            | NNX 150T CEPWU                  | NNX 150T CWWU    |                |               |                |               |             |
|         | CD   | NNX 150T CCD            | NNX 150T CEPCD                  | NNX 150T CWCD    | NNX 150T CPBCD | NNX 150T CSCD | NNX 150T CBRCD | NNX 150T CACD |             |
|         | CL   | NNX 150T CCL            | NNX 150T CEPCL                  | NNX 150T CWCL    | NNX 150T CPBCL | NNX 150T CSCL | NNX 150T CBRCL | NNX 150T CACL |             |
|         | TR   | NNX 150T CTR            | NNX 150T CEPTR                  |                  |                |               |                |               |             |
|         | TG   | NNX 150T CTG            | NNX 150T CEPTG                  |                  |                |               |                |               |             |
|         | PG   |                         |                                 |                  | NNX 150T CPBPG | NNX 150T CSPG |                |               |             |
|         | TS   | NNX 150T CTS            | NNX 150T CEPTS                  | NNX 150T CWTS    | NNX 150T CPBTS | NNX 150T CSTS | NNX 150T CBRTS | NNX 150T CATS |             |
|         | TM   | NNX 150T CTM            | NNX 150T CEPTM                  | NNX 150T CWTM    | NNX 150T CPBTM | NNX 150T CSTM | NNX 150T CBRTM | NNX 150T CATM |             |
|         | NM   | NNX 150T CNM            | NNX 150T CEPNM                  |                  |                |               | NNX 150T CBRNM | NNX 150T CANM |             |
|         | ZU   | NNX 150T CZU            | NNX 150T CEPZU                  |                  |                |               |                | NNX 150T CAZU |             |
|         | TEAK | W                       | NNX 150T                        | NNX 150T EP      | NNX 150T WW    | NNX 150T WPB  | NNX 150T WS    | NNX 150T WBR  | NNX 150T WA |

| TABLE   |  |
|---------|--|
| REF:    | NNX 90...                                  |
| WEIGHT: | C: 37 kg / 81,4 Lbs<br>W: 29 kg / 63,8 Lbs |

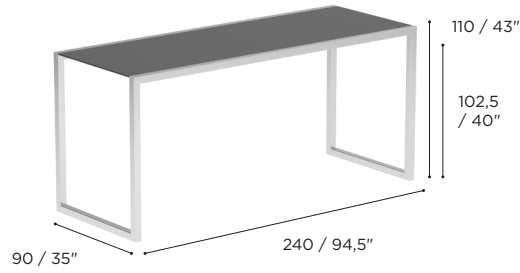


|         |    | BRUSHED STAINLESS STEEL | ELECTROPOLISHED STAINLESS STEEL |
|---------|----|-------------------------|---------------------------------|
|         |    | SS                      | EP                              |
| CERAMIC | WU | NNX 90 CWU              | NNX 90 CEPWU                    |
|         | TG | NNX 90 CTG              | NNX 90 CEPTG                    |
|         | ZU | NNX 90 CZU              | NNX 90 CEPZU                    |
| TEAK    | W  | NNX 90                  | NNX 90 EP                       |

# NINIX SPECIFICATIONS

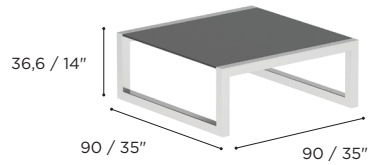
STANDARD / ON REQUEST

| BAR TABLE |                        |
|-----------|------------------------|
| REF:      | NNX 240H...            |
| WEIGHT:   | C: 52,8 kg / 116,4 Lbs |



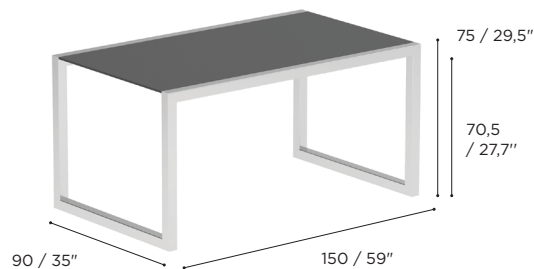
|         |      | BRUSHED STAINLESS STEEL | ELECTROPOLISHED STAINLESS STEEL | COATED STAINLESS STEEL |                |               |                |               |             |
|---------|------|-------------------------|---------------------------------|------------------------|----------------|---------------|----------------|---------------|-------------|
|         |      | SS                      | EP                              | W                      | PB             | S             | BR             | A             |             |
| CERAMIC | WU   | NNX 240H CWU            | NNX 240H CEPWU                  | NNX 240H CWWU          |                |               |                |               |             |
|         | CD   | NNX 240H CCD            | NNX 240H CEPCD                  | NNX 240H CWCD          | NNX 240H CPBCD | NNX 240H CSCD | NNX 240H CBRCD | NNX 240H CACD |             |
|         | CL   | NNX 240H CCL            | NNX 240H CEPCL                  | NNX 240H CWCL          | NNX 240H CPBCL | NNX 240H CSCL | NNX 240H CBRCL | NNX 240H CACL |             |
|         | TR   | NNX 240H CTR            | NNX 240H CEPTR                  |                        |                |               |                |               |             |
|         | TG   | NNX 240H CTG            | NNX 240H CEPTG                  |                        |                |               |                |               |             |
|         | PG   |                         |                                 |                        | NNX 240H CPBPG | NNX 240H CSPG |                |               |             |
|         | TS   | NNX 240H CTS            | NNX 240H CEPTS                  | NNX 240H CWTS          | NNX 240H CPBTS | NNX 240H CSTS | NNX 240H CBRTS | NNX 240H CATS |             |
|         | TM   | NNX 240H CTM            | NNX 240H CEP TM                 | NNX 240H CWTM          | NNX 240H CPBTM | NNX 240H CSTM | NNX 240H CBRTM | NNX 240H CATM |             |
|         | NM   | NNX 240H CNM            | NNX 240H CEPNM                  |                        |                |               | NNX 240H CBRNM | NNX 240H CANM |             |
|         | ZU   | NNX 240H CZU            | NNX 240H CEPZU                  |                        |                |               | NNX 240H CBRZU | NNX 240H CAZU |             |
|         | TEAK | W                       | NNX 240H W                      | NNX 240H WEP           | NNX 240H WW    | NNX 240H WPB  | NNX 240H WS    | NNX 240H WBR  | NNX 240H WA |

| LOW SIDE TABLE |  |
|----------------|--|
| REF:           | NNX 90T...                                   |
| WEIGHT:        | C: 32 kg / 70,54 Lbs<br>W: 24 kg / 59,91 Lbs |



|         |      | BRUSHED STAINLESS STEEL | ELECTROPOLISHED STAINLESS STEEL | COATED ALUMINIUM |               |              |               |              |            |
|---------|------|-------------------------|---------------------------------|------------------|---------------|--------------|---------------|--------------|------------|
|         |      | SS                      | EP                              | W                | PB            | S            | BR            | A            |            |
| CERAMIC | WU   | NNX 90T CWU             | NNX 90T CEPWU                   | NNX 90T CWWU     |               |              |               |              |            |
|         | CD   | NNX 90T CCD             | NNX 90T CEPCD                   | NNX 90T CWCD     | NNX 90T CPBCD | NNX 90T CSCD | NNX 90T CBRCD | NNX 90T CACD |            |
|         | CL   | NNX 90T CCL             | NNX 90T CEPCL                   | NNX 90T CWCL     | NNX 90T CPBCL | NNX 90T CSCL | NNX 90T CBRCL | NNX 90T CACL |            |
|         | TR   | NNX 90T CTR             | NNX 90T CEPTR                   |                  |               |              |               |              |            |
|         | TG   | NNX 90T CTG             | NNX 90T CEPTG                   |                  |               |              |               |              |            |
|         | PG   |                         |                                 |                  | NNX 90T CPBPG | NNX 90T CSPG |               |              |            |
|         | TS   | NNX 90T CTS             | NNX 90T CEPTS                   | NNX 90T CWTS     | NNX 90T CPBTS | NNX 90T CSTS | NNX 90T CBRTS | NNX 90T CATS |            |
|         | TM   | NNX 90T CTM             | NNX 90T CEP TM                  | NNX 90T CWTM     | NNX 90T CPBTM | NNX 90T CSTM | NNX 90T CBRTM | NNX 90T CATM |            |
|         | NM   | NNX 90T CNM             | NNX 90T CEPNM                   |                  |               |              | NNX 90T CBRNM | NNX 90T CANM |            |
|         | ZU   | NNX 90T CZU             | NNX 90T CEPZU                   |                  |               |              | NNX 90T CBRZU | NNX 90T CAZU |            |
|         | TEAK | W                       | NNX 90T                         | NNX 90T EP       | NNX 90T WW    | NNX 90T WPB  | NNX 90T WS    | NNX 90T WBR  | NNX 90T WA |

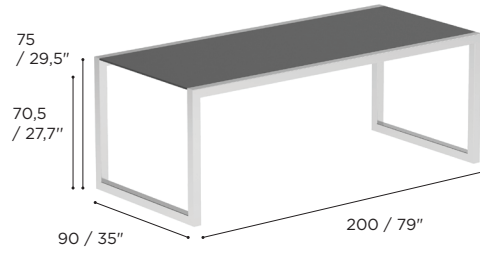
| TABLE   |   |
|---------|---|
| REF:    | NNX 150...                                  |
| WEIGHT: | C: 53 kg / 116,6 Lbs<br>W: 38 kg / 83,6 Lbs |



|         |    | BRUSHED STAINLESS STEEL | ELECTROPOLISHED STAINLESS STEEL |
|---------|----|-------------------------|---------------------------------|
|         |    | SS                      | EP                              |
| CERAMIC | WU | NNX 150 CWU             | NNX 150 CEPWU                   |
|         | TG | NNX 150 CTG             | NNX 150 CEPTG                   |
|         | ZU | NNX 150 CZU             | NNX 150 CEPZU                   |
| TEAK    | W  | NNX 150                 | NNX 150 EP                      |

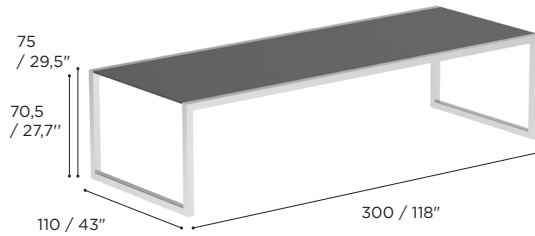
# NINIX SPECIFICATIONS

| TABLE   |  |
|---------|--|
| REF:    | NNX 200...                                   |
| WEIGHT: | C: 66 kg / 145,2 Lbs<br>W: 52 kg / 114,6 Lbs |



|         |      | BRUSHED STAINLESS STEEL | ELECTROPOLISHED STAINLESS STEEL | COATED STAINLESS STEEL |               |              |               |              |            |
|---------|------|-------------------------|---------------------------------|------------------------|---------------|--------------|---------------|--------------|------------|
|         |      | SS                      | EP                              | W                      | PB            | S            | BR            | A            |            |
| CERAMIC | WU   | NNX 200 CWU             | NNX 200 CEPWU                   | NNX 200 CWWU           |               |              |               |              |            |
|         | CD   | NNX 200 CCD             | NNX 200 CEPCD                   | NNX 200 CWCD           | NNX 200 CPBCD | NNX 200 CSCD | NNX 200 CBRCD | NNX 200 CACD |            |
|         | CL   | NNX 200 CCL             | NNX 200 CEPCL                   | NNX 200 CWCL           | NNX 200 CPBCL | NNX 200 CSCL | NNX 200 CBRCL | NNX 200 CACL |            |
|         | TR   | NNX 200 CTR             | NNX 200 CEPTR                   |                        |               |              |               |              |            |
|         | TG   | NNX 200 CTG             | NNX 200 CEPTG                   |                        |               |              |               |              |            |
|         | PG   |                         |                                 |                        | NNX 200 CPBPG | NNX 200 CSPG |               |              |            |
|         | TS   | NNX 200 CTS             | NNX 200 CEPTS                   | NNX 200 CWTS           | NNX 200 CPBTS | NNX 200 CSTS | NNX 200 CBRTS | NNX 200 CATS |            |
|         | TM   | NNX 200 CTM             | NNX 200 CEPTM                   | NNX 200 CWTM           | NNX 200 CPBTM | NNX 200 CSTM | NNX 200 CBRTM | NNX 200 CATM |            |
|         | NM   | NNX 200 CNM             | NNX 200 CEPNM                   |                        |               |              | NNX 200 CBRNM | NNX 200 CANM |            |
|         | ZU   | NNX 200 CZU             | NNX 200 CEPZU                   |                        |               |              | NNX 200 CBRZU | NNX 200 CAZU |            |
|         | TEAK | W                       | NNX 200 W                       | NNX 200 WEP            | NNX 200 WW    | NNX 200 WPB  | NNX 200 WS    | NNX 200 WBR  | NNX 200 WA |

| TABLE   |                     |
|---------|---------------------|
| REF:    | NNX 300...          |
| WEIGHT: | C: 143 kg / 315 Lbs |

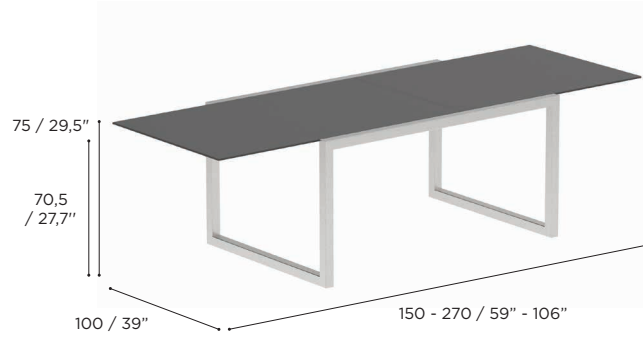


|         |      | BRUSHED STAINLESS STEEL | ELECTROPOLISHED STAINLESS STEEL | COATED STAINLESS STEEL |               |              |               |              |            |
|---------|------|-------------------------|---------------------------------|------------------------|---------------|--------------|---------------|--------------|------------|
|         |      | SS                      | EP                              | W                      | PB            | S            | BR            | A            |            |
| CERAMIC | WU   | NNX 300 CWU             | NNX 300 CEPWU                   | NNX 300 CWWU           |               |              |               |              |            |
|         | CD   | NNX 300 CCD             | NNX 300 CEPCD                   | NNX 300 CWCD           | NNX 300 CPBCD | NNX 300 CSCD | NNX 300 CBRCD | NNX 300 CACD |            |
|         | CL   | NNX 300 CCL             | NNX 300 CEPCL                   | NNX 300 CWCL           | NNX 300 CPBCL | NNX 300 CSCL | NNX 300 CBRCL | NNX 300 CACL |            |
|         | TR   | NNX 300 CTR             | NNX 300 CEPTR                   |                        |               |              |               |              |            |
|         | TG   | NNX 300 CTG             | NNX 300 CEPTG                   |                        |               |              |               |              |            |
|         | PG   |                         |                                 |                        | NNX 300 CPBPG | NNX 300 CSPG |               |              |            |
|         | TS   | NNX 300 CTS             | NNX 300 CEPTS                   | NNX 300 CWTS           | NNX 300 CPBTS | NNX 300 CSTS | NNX 300 CBRTS | NNX 300 CATS |            |
|         | TM   | NNX 300 CTM             | NNX 300 CEPTM                   | NNX 300 CWTM           | NNX 300 CPBTM | NNX 300 CSTM | NNX 300 CBRTM | NNX 300 CATM |            |
|         | NM   | NNX 300 CNM             | NNX 300 CEPNM                   |                        |               |              | NNX 300 CBRNM | NNX 300 CANM |            |
|         | ZU   | NNX 300 CZU             | NNX 300 CEPZU                   |                        |               |              | NNX 300 CBRZU | NNX 300 CAZU |            |
|         | TEAK | W                       | NNX 300 W                       | NNX 300 WEP            | NNX 300 WW    | NNX 300 WPB  | NNX 300 WS    | NNX 300 WBR  | NNX 300 WA |

# NINIX SPECIFICATIONS

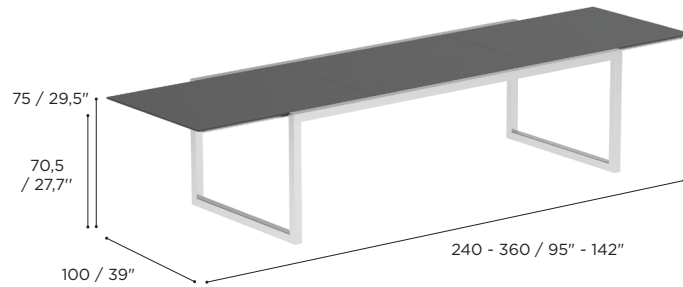
STANDARD / ON REQUEST

| EXTENDABLE TABLE |                   |
|------------------|-------------------|
| REF:             | NNX 270...        |
| WEIGHT:          | 80 kg / 176,4 Lbs |
| INFO:            | EXTENDABLE WHEELS |



|         |    | BRUSHED STAINLESS STEEL | ELECTROPOLISHED STAINLESS STEEL | COATED STAINLESS STEEL |                |                |
|---------|----|-------------------------|---------------------------------|------------------------|----------------|----------------|
|         |    | SS                      | EP                              | W                      | S              | A              |
| CERAMIC | WU | NNX 270 CWU *           | NNX 270 CEPWU *                 | NNX 270 CWWU *         |                |                |
|         | PG |                         |                                 |                        | NNX 270 CSPG * |                |
|         | ZU | NNX 270 CZU *           | NNX 270 CEPZU *                 |                        |                | NNX 270 CAZU * |

| EXTENDABLE TABLE |   |
|------------------|---|
| REF:             | NNX 360...                                |
| WEIGHT:          | C: 132 kg / 291 Lbs<br>W: 83 kg / 193 Lbs |
| INFO:            | EXTENDABLE WHEELS                         |



|         |    | BRUSHED STAINLESS STEEL | ELECTROPOLISHED STAINLESS STEEL | COATED STAINLESS STEEL |               |              |              |
|---------|----|-------------------------|---------------------------------|------------------------|---------------|--------------|--------------|
|         |    | SS                      | EP                              | W                      | PB            | S            | A            |
| CERAMIC | WU | NNX 360 CWU             | NNX 360 CEPWU                   | NNX 360 CWWU           |               |              |              |
|         | PG |                         |                                 |                        | NNX 360 CPBPG | NNX 360 CSPG |              |
|         | ZU | NNX 360 CZU             | NNX 360 CEPZU                   |                        |               |              | NNX 360 CAZU |
| TEAK    | W  | NNX 360                 | NNX 360 EP                      | NNX 360 WW             | NNX 360 WPB   | NNX 360 WS   | NNX 360 WA   |

## CUSHIONS

### OPEN-CELLED:

Open-celled cushion technology

Royal Botania cushions are 100% water and UV resistant.

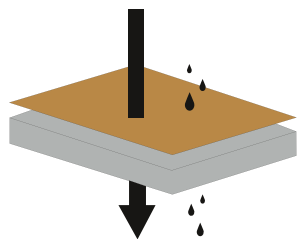
The foam has an open-celled structure, creating a high permeability level.

This means that when water gets in, it is easy for it to evaporate.

Your outdoor furniture cushions will dry very quickly after exposure to water or moisture.

During production of the foam, an anti-bacterial and anti-fungal treatment is applied.

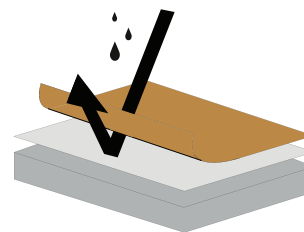
This is done without using CFC's, keeping the process environmentally friendly.



### MEMBRANE:

Royal Botania cushions are created by laminating our membrane to high-performance textiles, then sealing them with an innovative solution for waterproof protection.

The Royal Botania membrane is the heart of all our cushions. The PTFE-layer contains over 9 billion microscopic pores per square inch. These pores are 20.000 times smaller than a water droplet, but 700 times larger than a water vapor molecule, which makes the Royal Botania membrane completely waterproof from the outside, while allowing perspiration to escape from the inside. The membrane consists of a MICRO-fiber, preventing the penetration of body oils, food or insect repellents that could otherwise penetrate the cushion.



## PROTECTIVE COVERS

To protect your Royal Botania furniture from the elements when not used, we provide PU coated polyester covers for every element as well as for modular combinations. The latter are custom made to fit the lay-out of your lounge set.

The seams on those protective covers are sealed by silicone strips to prevent water from entering. Always make sure that the furniture and the cushions are completely dry before putting on the covers to avoid the formation of mould.

## MAINTENANCE

Even the best of materials and components, will get dirty when placed outside. Even though our furniture is well protected against the elements, proper maintenance is a must. For that purpose we offer a wide array of maintenance products, all especially developed to make sure your furniture will stand out, even after many years outside. To select the right product for the right application, check our maintenance manual on [www.royalbotania.com/maintenance](http://www.royalbotania.com/maintenance)

## WARRANTY

Royal Botania products are made from the finest materials, and with the utmost care, so as to give you a lifetime of enjoyment. That is when correctly used and properly maintained. Hidden flaws in materials can never be excluded for 100%. These can eventually cause issues. In the event of quality issues arising from such defects, Royal Botania obviously takes its responsibility. Our warranty clauses can be found on [www.royalbotania.com/warranty](http://www.royalbotania.com/warranty)

## TEAK & MAHOGANY

AS ROYAL BOTANIA NEVER COMPROMISES ON QUALITY, ONLY CAREFULLY SELECTED MATURE TEAKWOOD IS USED IN OUR PRODUCTS. ALL OF IT HARVESTED IN STRICT ACCORDANCE WITH OUR ENVIRONMENTAL POLICIES. TEAK WOOD'S RENOWNED DURABILITY IS DUE TO ITS HIGH CONTENT OF NATURAL OILS. THE LIMITED ABSORPTION OF MOISTURE PROTECTS THE WOOD FROM WARPING AND GIVES IT ENORMOUS STABILITY. IN ADDITION, TEAK IS HIGHLY RESISTANT TO ATTACKS BY PESTS. IT IS BECAUSE OF THESE QUALITIES, AS WELL AS ITS EXCEPTIONALLY ATTRACTIVE HUE AND STRUCTURE, THAT TEAK IS WIDELY CONSIDERED "THE NOBLEST OF ALL WOOD TYPES".

MAHOGANY IS A HARDWOOD WITH A REDDISH COLOUR THAT IS WIDELY USED FOR BOAT BUILDING, AS WELL AS FURNITURE MANUFACTURING.

TEAK  
REF: W



OILED MAHOGANY  
REF: MHOT

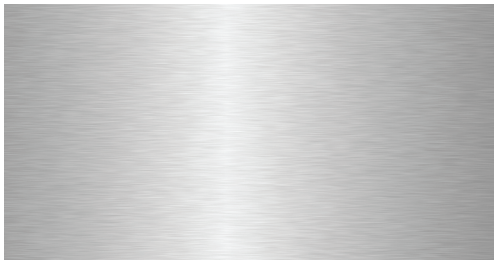


## STAINLESS STEEL

STAINLESS STEEL IS A FERROUS ALLOY WITH INCREASED CORROSION RESISTANCE DUE TO THE ADDITION OF CHROME AND NICKEL. CHLORINE, THE GREATEST ENEMY OF STAINLESS STEEL, CAN CAUSE A TYPE OF CORROSION KNOWN AS "PITTING". FOR THIS REASON, IT IS RECOMMENDED THAT IN COASTAL LOCATIONS THE METAL BE GIVEN AN ELECTROPOLISHING TREATMENT, IN ORDER TO FURTHER INCREASE ITS RESISTANCE TO CORROSION. THE FURNITURE FRAMES OF THE WAVE IS SUPPLIED WITH AN ELECTROPOLISHED FINISH AS STANDARD.

FOR THE NINIX, O-ZON, QT & TABOELA RANGES WE RECOMMEND THE OPTIONAL ELECTROPOLISHING TREATMENT OF THE FRAME IF IT IS TO BE USED IN A CORROSIVE ENVIRONMENT.

BRUSHED STAINLESS STEEL  
REF: SS



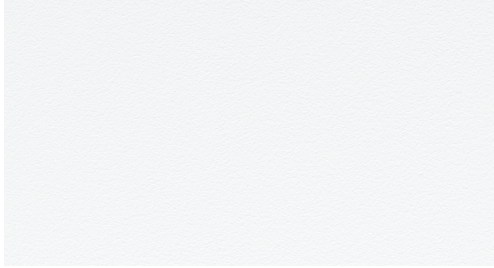
ELECTROPOLISHED STAINLESS STEEL  
REF: EP



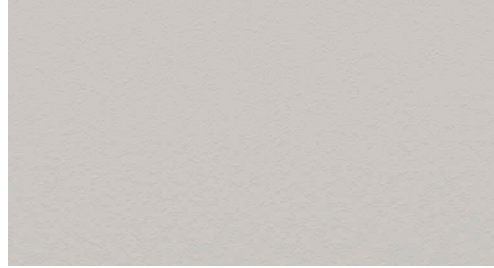


## POWDER COATING COLOURS

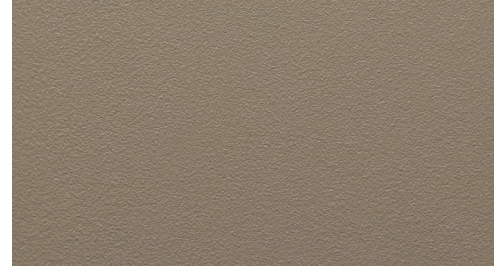
WHITE  
REF: WR



PEBBLE  
REF: PB



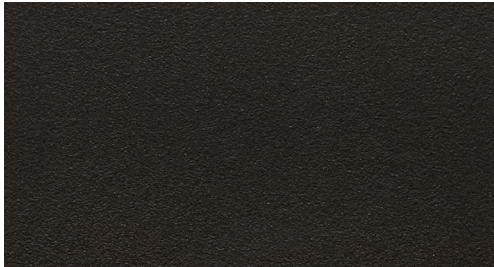
SAND  
REF: S



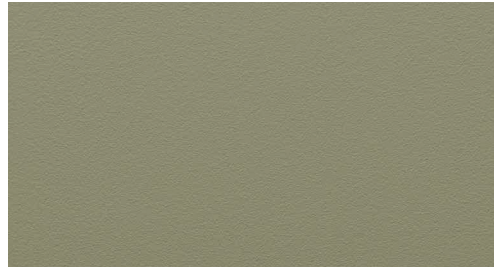
BRONZE  
REF: BR



ANTHRACITE  
REF: A



OLIVE  
REF: OL



## FIBER

OLEFIN FIBER IS A SYNTHETIC FIBER MADE FROM POLYPROPYLENE. THE ADVANTAGE OF THIS FIBER IS ITS STRENGTH, COLOUR FASTNESS AND COMFORT. ALSO IT IS VERY RESISTANT TO STAINING AND DIFFERENT WEATHER CONDITIONS.

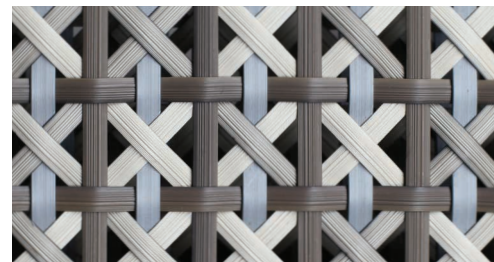
JIVE COLLECTION (OLEFIN FIBER)



SAMBA COLLECTION (OLEFIN FIBER)



CALYPSO COLLECTION (POLYTHYLENE FIBER)



FENSI COLLECTION





# CERAMIC

THE CERAMIC TOPS ARE MADE FROM NATURAL CLAYS, SO SMALL COLOUR GRADATIONS CAN OCCUR. THIS MAKES EACH TABLE UNIQUE.

WHITE  
REF: WUM



CEMENTO LUMINOSO  
REF: CL



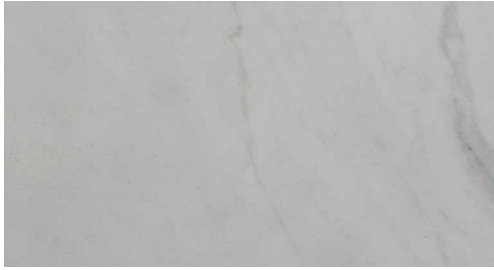
PEARL GREY  
REF: PG



NERO MARQUINA  
REF: NM



BIANCO STATUARIO  
REF: BS



TRAVERTINO  
REF: TR



TAUPE GREY  
REF: TG



BLACK  
REF: ZUM



CEPPO DOLOMITICA  
REF: CD



TERRA SABBIA  
REF: TS



TERRA MARRONE  
REF: TM



## CONCRETE

WE USE AN ULTRA-HIGH PERFORMANCE CONCRETE REINFORCED BY NATURAL MINERAL COMPONENTS AND ORGANIC FIBERS. THANKS TO ITS DISCONTINUOUS PORE STRUCTURE AND CRACK-BRIDGING FIBERS, IT IS VIRTUALLY IMPERVIOUS. PENETRATION OF CHLORIDE IONS IS ALSO SIGNIFICANTLY REDUCED AND THUS PERFORMS EXCEPTIONALLY WELL IN HIGHLY CORROSIVE ENVIRONMENTS SUCH AS NEAR BEACHES.

CEMENT GREY

REF: CG



## ENAMELED LAVA STONES

LAVA STONES WITH A VITREOUS ENAMEL COATING. FUSED AT 850°C THE ENAMEL BECOMES VERY HARD AND EXTREMELY RESISTANT TO ALL WEATHER CONDITIONS.

PEARL

REF: PE



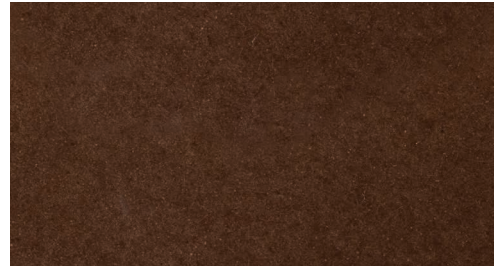
MOON

REF: MO



LAVA

REF: LA



SLATE

REF: SL



JADE

REF: JA



DUSK

REF: DU



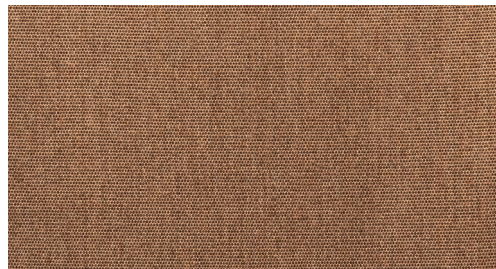


## CATEGORY A FABRICS ACRYLIC

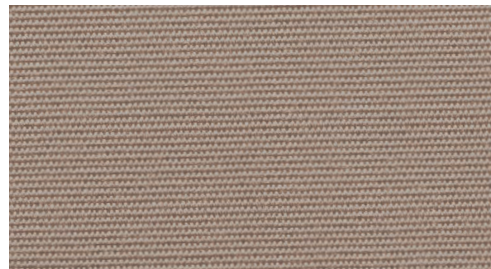
WHITE  
REF: ...WU - CAT.: A - ACRYLIC



COCONUT  
REF: ...CC - CAT.: A - ACRYLIC



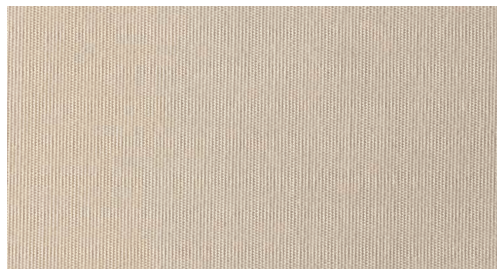
CAPPUCCINO  
REF: ...CAU - CAT.: A - ACRYLIC



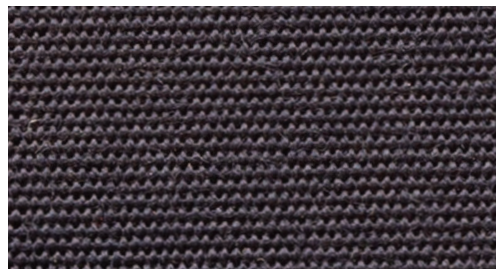
ROCK  
REF: ...ROU - CAT.: A - ACRYLIC



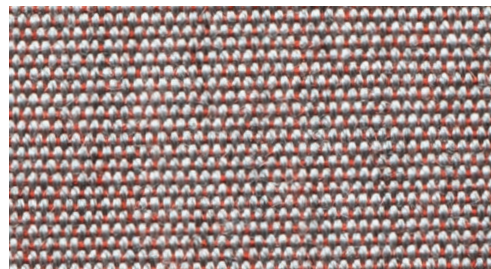
ECRU  
REF: ...EU - CAT.: A - ACRYLIC



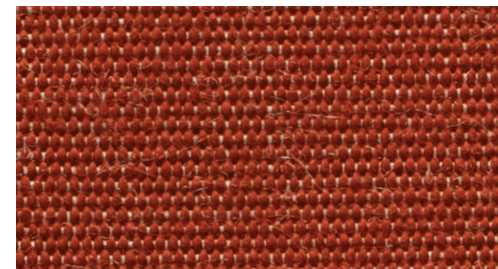
NAVY BLUE  
REF: ...NBU - CAT.: A - ACRYLIC



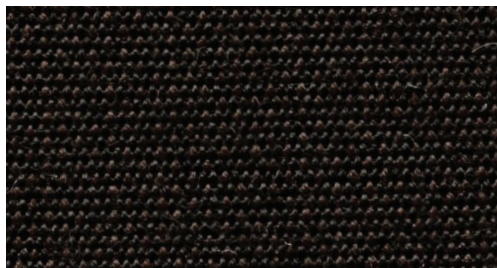
ROSE  
REF: ...RO - CAT.: A - ACRYLIC



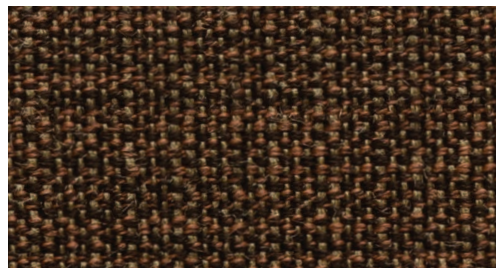
TERRA  
REF: ...TER - CAT.: A - ACRYLIC



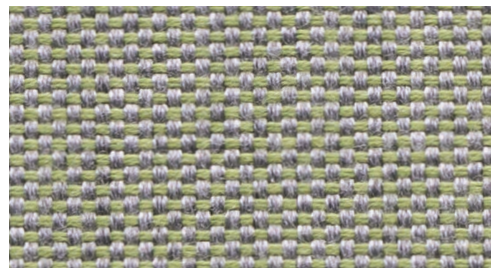
BLACK  
REF: ...ZU - CAT.: A - ACRYLIC



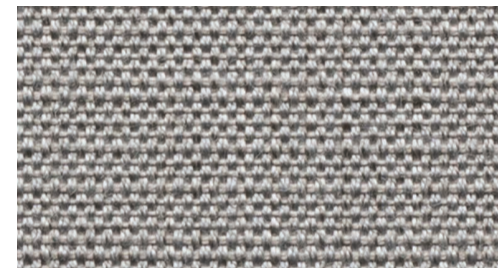
CHOCOLAT LINEN  
REF: ...CHL - CAT.: A - ACRYLIC



SAGE LINEN  
REF: ...SL - CAT.: A - ACRYLIC



FROST LINEN  
REF: ...FL - CAT.: A - ACRYLIC





## CATEGORY B FABRICS ACRYLIC & POLYPROPYLENE

WHITE HEAVY  
REF: ...WAH - CAT.: B - POLYPROPYLENE



LIGHT BLUE HEAVY  
REF: ...LBH - CAT.: B - POLYPROPYLENE



AZURE BLUE HEAVY  
REF: ...AZH - CAT.: B - POLYPROPYLENE



ROCK HEAVY  
REF: ...ROH - CAT.: B - POLYPROPYLENE



SAND HEAVY  
REF: ...SAH - CAT.: B - POLYPROPYLENE



SAFFRON HEAVY  
REF: ...SFH - CAT.: B - POLYPROPYLENE



RED WINE HEAVY  
REF: ...RWH - CAT.: B - POLYPROPYLENE



CARMINE HEAVY  
REF: ...CH - CAT.: B - POLYPROPYLENE



MOSS HEAVY  
REF: ...MH - CAT.: B - POLYPROPYLENE



CARAMEL HEAVY  
REF: ...CAH - CAT.: B - POLYPROPYLENE



AUBERGINE HEAVY  
REF: ...AUH - CAT.: B - POLYPROPYLENE



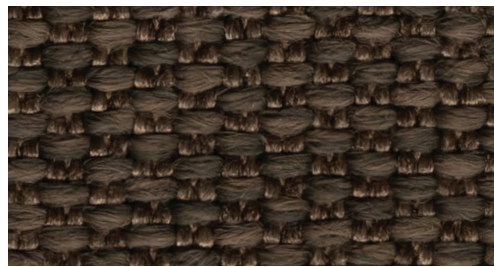
GRANITE HEAVY  
REF: ...GRH - CAT.: B - POLYPROPYLENE



PITCH BLACK HEAVY  
REF: ...ZUPH - CAT.: B - POLYPROPYLENE



DARK BROWN TWIN  
REF: ...DBT - CAT.: B - POLYPROPYLENE



WHITE TWIN  
REF: ...WUT - CAT.: B - POLYPROPYLENE





## CATEGORY B FABRICS ACRYLIC & POLYPROPYLENE

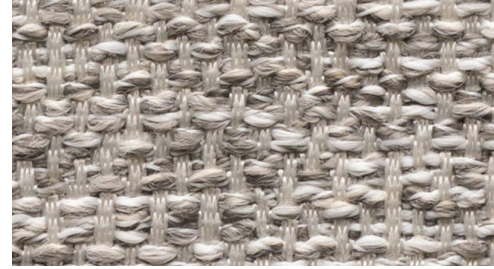
NATURAL WHITE DOT  
REF: ...NWD - CAT.: B - POLYPROPYLENE



NATURAL GREY DOT  
REF: ...NGD - CAT.: B - POLYPROPYLENE



NATURAL SILVER DOT  
REF: ...NSD - CAT.: B - POLYPROPYLENE



NATURAL ECRU DOT  
REF: ...NED - CAT.: B - POLYPROPYLENE



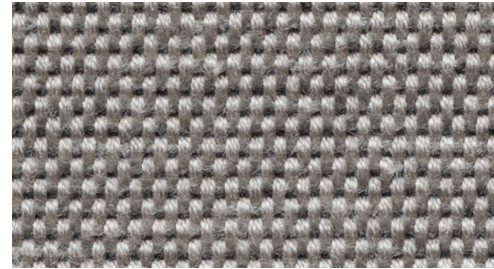
NATURAL LINEN DOT  
REF: ...NLD - CAT.: B - POLYPROPYLENE



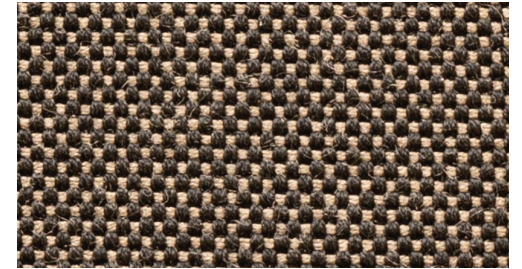
STONE FLAX  
REF: ...SF - CAT.: B - ACRYLIC



DESERT STONE FLAX  
REF: ...DSF - CAT.: B - ACRYLIC

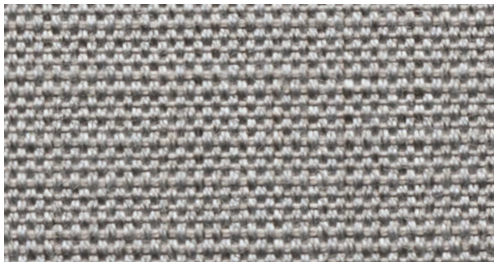


MARBLE FLAX  
REF: ...MAF - CAT.: B - ACRYLIC



## CATEGORY B/C LAMINATED FABRICS ACRYLIC

FROST LINEN LAMINATED  
REF: ...FLL - CAT.: B - ACRYLIC



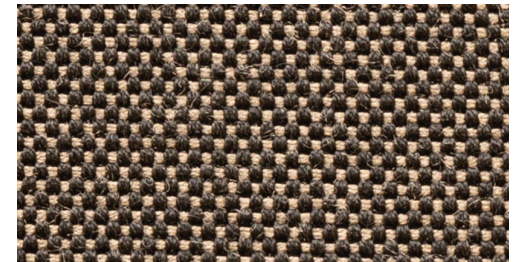
TUXEDO LINEN LAMINATED  
REF: ...TULL - CAT.: B - ACRYLIC



DESERT STONE FLAX LAMINATED  
REF: ...DSFL - CAT.: C - ACRYLIC



MARBLE FLAX LAMINATED  
REF: ...MAFL - CAT.: C - ACRYLIC





## CATEGORY C FABRICS ACRYLIC & POLYPROPYLENE

PASTEL SAND  
REF: ...PAS - CAT.: C - ACRYLIC



PASTEL BLUE  
REF: ...PAB - CAT.: C - ACRYLIC



PASTEL YELLOW  
REF: ...PAY - CAT.: C - ACRYLIC



PASTEL COCONUT  
REF: ...PAC - CAT.: C - ACRYLIC



PASTEL GREEN  
REF: ...PAG - CAT.: C - ACRYLIC



PASTEL ORANGE  
REF: ...PAO - CAT.: C - ACRYLIC



PASTEL RED  
REF: ...PAR - CAT.: C - ACRYLIC



MOSS  
REF: ...MOS - CAT.: C - POLYPROPYLENE



BOUCLE SAND  
REF: ...BOS - CAT.: C - POLYPROPYLENE



BOUCLE WHITE  
REF: ...BOW - CAT.: C - POLYPROPYLENE



BOUCLE GREY  
REF: ...BOG - CAT.: C - POLYPROPYLENE



BOUCLE BLUE  
REF: ...BOB - CAT.: C - POLYPROPYLENE



ECRU LINEN  
REF: ...EUL - CAT.: C - ACRYLIC



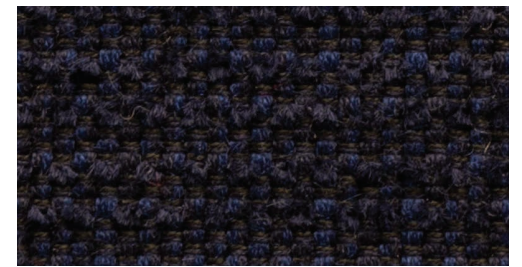
JUNIPER GREEN  
REF: ...JG - CAT.: C - ACRYLIC



AUBERGINE MESH  
REF: ...AUM - CAT.: C - ACRYLIC



NIGHT BLUE  
REF: ...NB - CAT.: C - ACRYLIC





## CATEGORY C FABRICS ACRYLIC & POLYPROPYLENE

VANILLE VELVET  
REF: ...VAV - CAT.: C - ACRYLIC



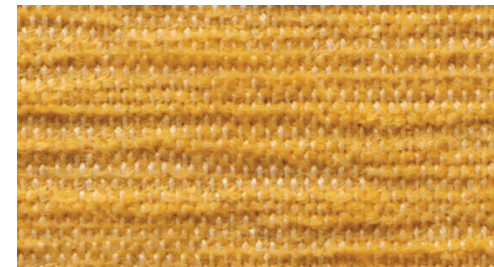
ECRU VELVET  
REF: ...EUV - CAT.: C - ACRYLIC



SALMON VELVET  
REF: ...SAV - CAT.: C - ACRYLIC



SAFFRON VELVET  
REF: ...SFV - CAT.: C - ACRYLIC



DARK BROWN VELVET  
REF: ...DBV - CAT.: C - ACRYLIC



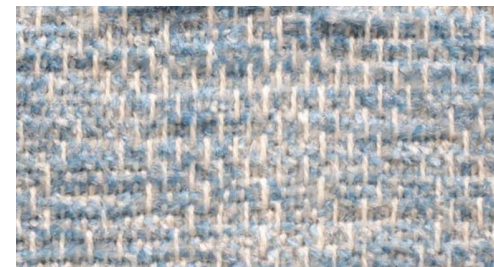
TERRA VELVET  
REF: ...TEV - CAT.: C - ACRYLIC



AUBERGINE VELVET  
REF: ...AUV - CAT.: C - ACRYLIC



ICE BLUE VELVET  
REF: ...IBV - CAT.: C - ACRYLIC



SILVER VELVET  
REF: ...SIV - CAT.: C - ACRYLIC



IRON GREY VELVET  
REF: ...IGV - CAT.: C - ACRYLIC



ORANGE CHEVRON  
REF: ...ORC - CAT.: C - POLYPROPYLENE



OLD ROSE  
REF: ...OLR - CAT.: C - POLYPROPYLENE



LIGHT BOUCLE WHITE  
REF: ...LBW - CAT.: C - POLYPROPYLENE



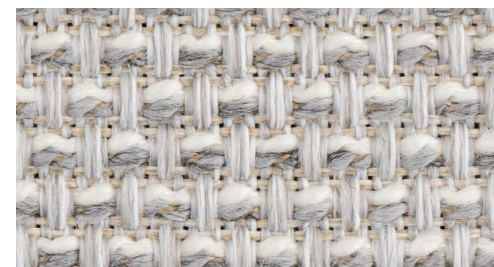
LIGHT BOUCLE SAND  
REF: ...LBS - CAT.: C - ACRYLIC



LIGHT BOUCLE GREY  
REF: ...LBG - CAT.: C - POLYPROPYLENE



GREY MESH  
REF: ...GM - CAT.: C - ACRYLIC



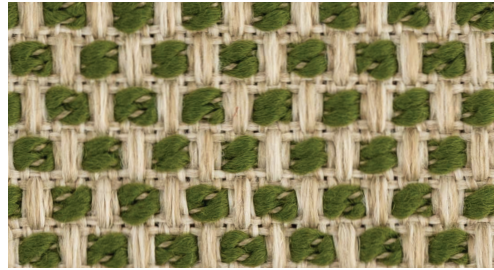


## CATEGORY C FABRICS ACRYLIC & POLYPROPYLENE

CAMEL MESH  
REF: ...CM - CAT.: C - POLYPROPYLENE



MOSS MESH  
REF: ...MM - CAT.: C - POLYPROPYLENE



SAND MESH  
REF: ...SM - CAT.: C - POLYPROPYLENE



## CATEGORY C FABRICS POLYSKIN

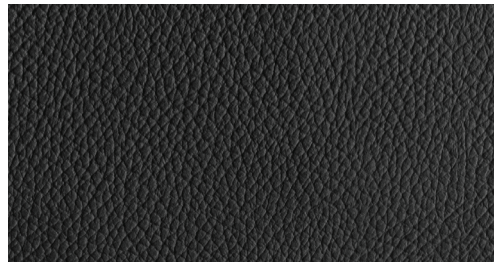
ONLY AVAILABLE FOR STRAPPY, STYLETTO & OSTREA COLLECTION!

POLYSKIN IS A SYNTHETIC ALL WEATHER LEATHER IMITATION THAT IS EXTREMELY UV AND WATER RESISTANT.

CAPPUCCINO  
REF: ...SCA - CAT.: C - POLYSKIN



BLACK  
REF: ...SBL - CAT.: C - POLYSKIN



COGNAC  
REF: ...SCO - CAT.: C - POLYSKIN





## BATYLINE

THE SLINGS ON METAL FRAMED CHAIRS AND LOUNGERS ARE MADE OF BATYLINE® FABRICS, A WOVEN POLYESTER FIBER PROTECTED BY A PVC COATING. THIS COATING GUARANTEES EXCEPTIONAL RESISTANCE TO CLIMATIC CONDITIONS AND UV EXPOSURE. THE FACT THAT THERE IS NO MOISTURE ABSORPTION RESULTS IN QUICK-DRYING, LITTLE SENSITIVITY TO STAINING AND EASY CLEANING.

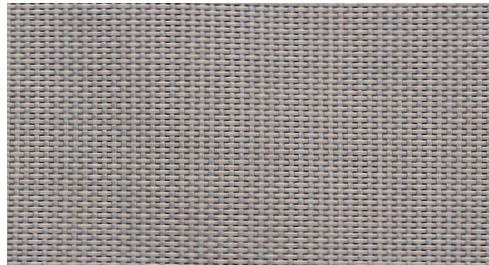
WHITE  
REF: ...WU



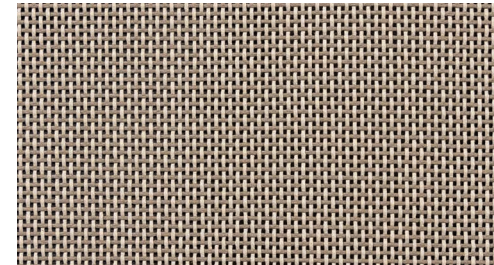
WHITE (FOR NNX(L) - OZN - WV)  
REF: ...WUC



PEARL GREY  
REF: ...PG



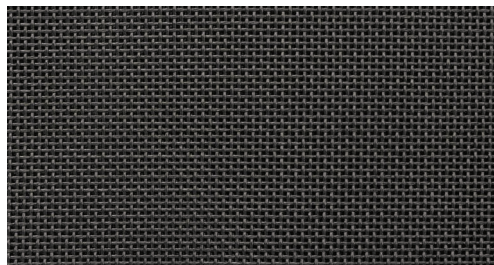
CAPPUCCINO  
REF: ...CAU



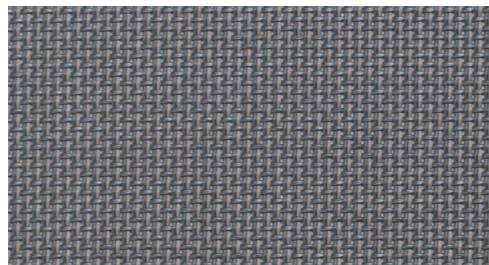
BLACK  
REF: ...ZU



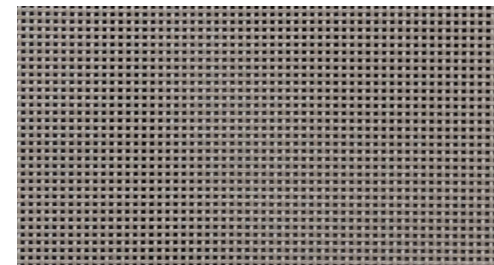
BLACK (FOR NNX(L) - OZN - WV)  
REF: ...ZUC



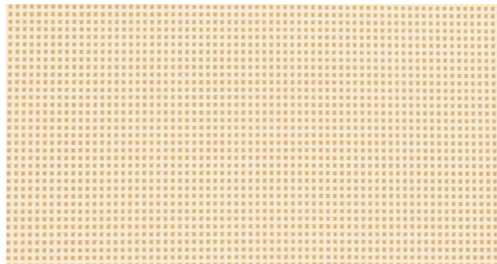
GRAPHITE  
REF: ...GRP



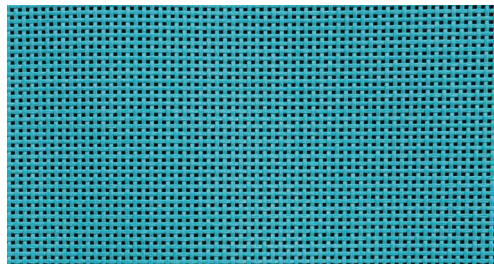
BROWN  
REF: ...BRU



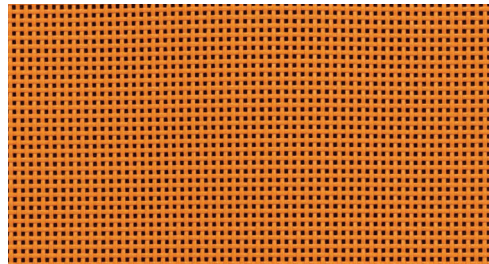
ECRU  
REF: ...EU



TURQUOISE  
REF: ...TQF



ORANGE  
REF: ...ORU





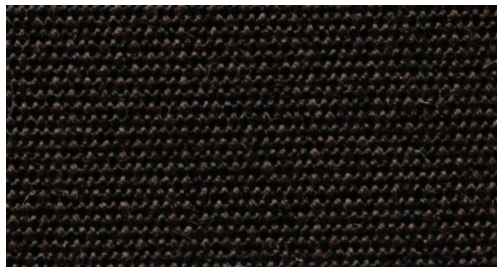
## PARASOL FABRICS

FOR OUR SHADY AND BLOOM PARASOL WE USE A THICKER FABRIC WITH A SPECIAL COATING TO FURTHER PROTECT THEM FROM THE ELEMENTS.

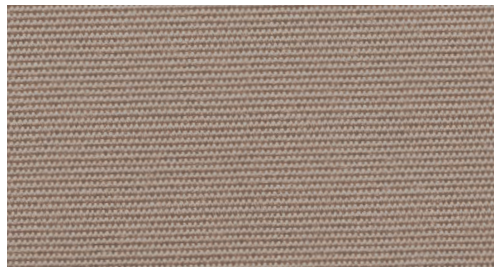
WHITE  
REF: ...WU - CAT.: A - ACRYLIC



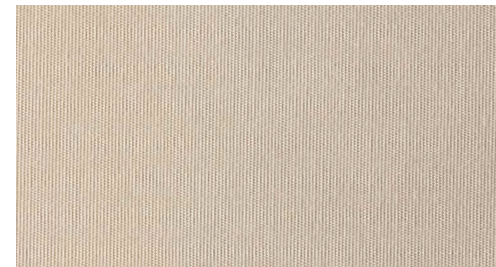
BLACK  
REF: ...ZU - CAT.: A - ACRYLIC



CAPPUCCINO  
REF: ...CAU - CAT.: A - ACRYLIC



ECRU  
REF: ...EU - CAT.: A - ACRYLIC



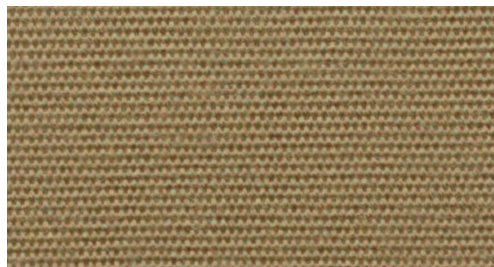
BLUE  
REF: ...BU - CAT.: C - ACRYLIC



FONDANT  
REF: ...FOU - CAT.: A - ACRYLIC



MOKKA  
REF: ...MU - CAT.: A - ACRYLIC



ROCK  
REF: ...ROU - CAT.: A - ACRYLIC



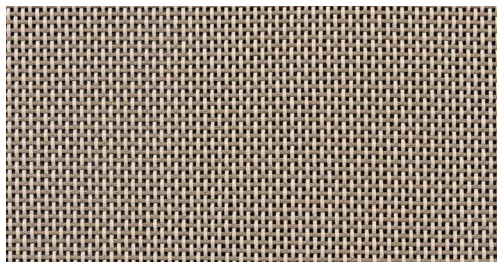
## PARASOL BATYLINE

THE BATYLINE FOR OUR OAZZ IS WOVEN THIGHT AND GIVEN A COATING TO FURTHER PROTECT THEM FROM THE ELEMENTS.

WHITE  
REF: ...WU



CAPPUCCINO  
REF: ...CAU



BLACK  
REF: ...ZU

